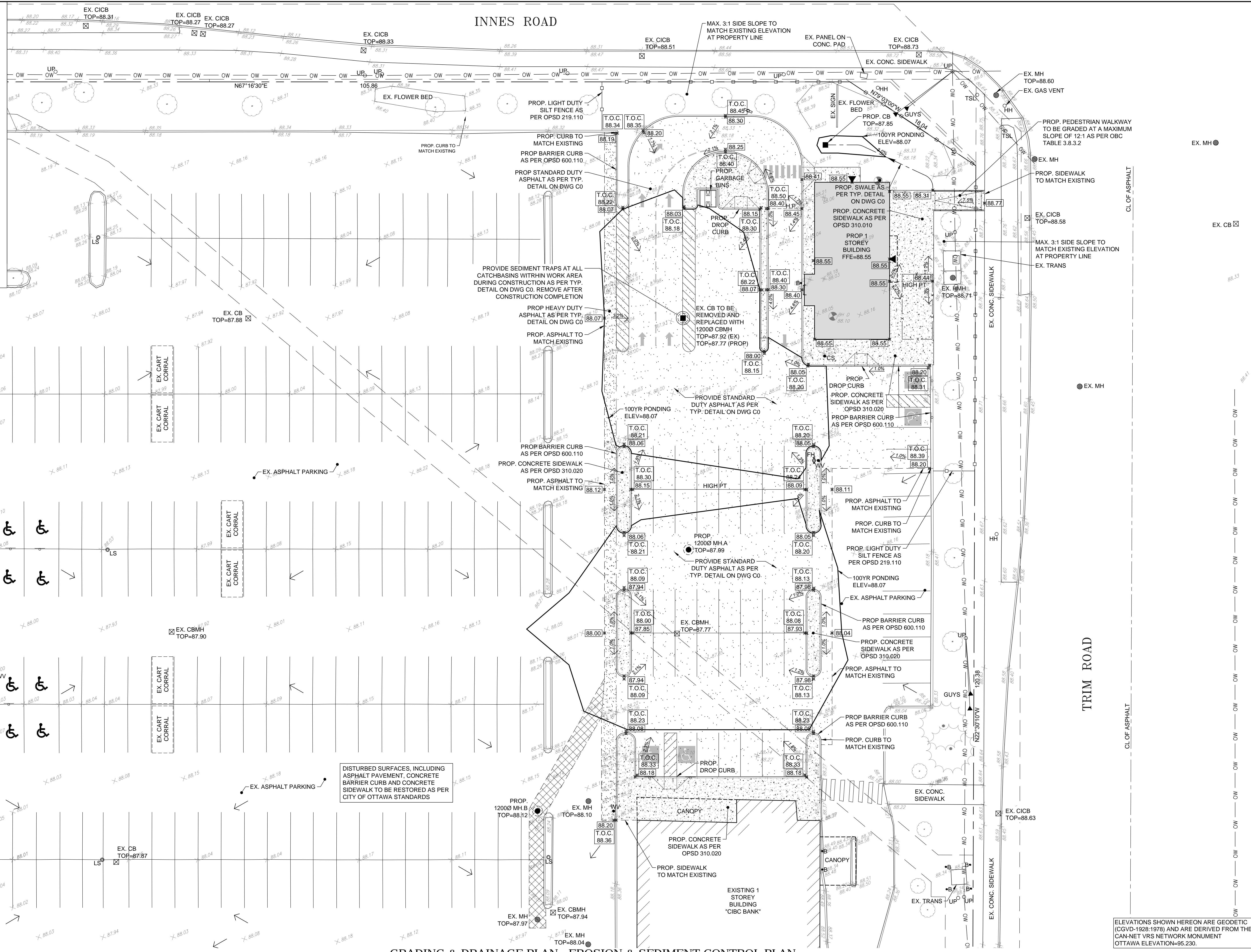


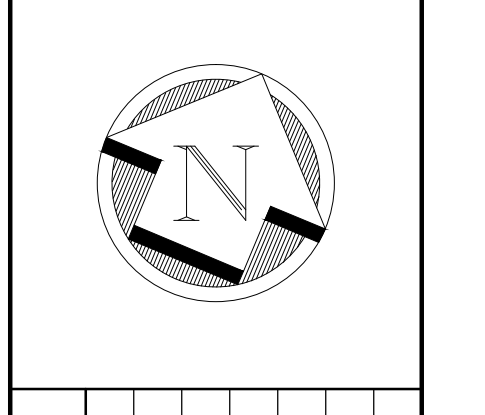
**LEGEND**

- EXISTING ELEVATION
- PROPOSED ELEVATION
- T.O.C. TOP OF CURB
- T.O.S. TOP OF SIDEWALK
- DIRECTION OF FLOW
- SILT FENCE
- PROPERTY LINE
- EXIST. CATCHBASIN
- NEW CATCHBASIN
- EXIST. MANHOLE
- NEW MANHOLE
- EXIST. VALVE
- NEW VALVE
- FIRE HYDRANT
- GUY WIRE ANCHOR
- UTILITY POLE
- LIGHT STANDARD
- GAS METER
- BUILDING ENTRANCE



**HALLEX ENGINEERING LTD.**

4999 Victoria Avenue,  
Mississauga, ON L4V 1V4  
Tel: 905-270-1010 Fax: 905-270-1015



REV.	DRAWING REVISION	DATE
0	ISSUED FOR SITE PLAN APPROVAL	MAR. 13, 2019
1	ISSUED FOR SITE PLAN APPROVAL	AUG. 12, 2019
2	ISSUED FOR SITE PLAN APPROVAL	DEC. 06, 2019

**CLIENT:**  
ACK ARCHITECTS  
443 EASTCHESTER AVENUE  
ST. CATHARINES, ON  
L2M 6S2

**PROJECT:**  
PROPOSED FREESTANDING  
PAD BUILDING  
5150 INNES ROAD,  
ORLEANS, ON

**SHEET TITLE:**  
GRADING & DRAINAGE PLAN  
EROSION & SEDIMENT  
CONTROL PLAN

<b>DATE:</b>	JAN. 2019
<b>SCALE:</b>	AS SHOWN
<b>DR. BY:</b>	LB
<b>CH. BY:</b>	JS/JH
<b>JOB No.:</b>	190105
<b>DWG.</b>	C2
<b>REV.</b>	2

#16789 DWG#C2

D07-12-19-0115