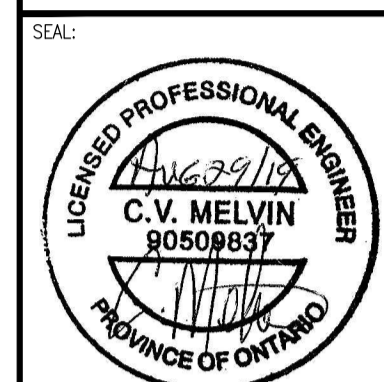




300-2611 QUEENSWAY DRIVE
OTTAWA ONTARIO CANADA K2B 8K2
TEL: 1-613-829-2800 | FAX: 1-613-829-8299 | WWW.WSPGROUP.COM

CONSULTANT:



CLIENT REF. #:
PROJECT:

HIGHLAND PARK
REMEMBRANCE

KEY PLAN:

DISCLAIMER: THIS DRAWING AND DESIGN IS COPYRIGHT PROTECTED WHICH SHALL NOT BE USED, REPRODUCED OR REVISED WITHOUT WRITTEN PERMISSION BY WSP CANADA INC. THE CONTRACTOR SHALL CHECK AND VERIFY ALL DIMENSIONS AND UTILITY LOCATIONS AND REPORT ALL ERRORS AND OMISSIONS PRIOR TO COMMENCING WORK. THIS DRAWING IS NOT TO BE SCALED.

ISSUED FOR - REVISION:

IS	RE	DATE	DESCRIPTION
D	03	2019/12/11	RE-ISSUED FOR SPC
C	02	2019/11/20	RE-ISSUED SITE PLAN CTRL
B	01	2019/06/17	ISSUED FOR SITE PLAN APPROVAL
A	00	2018/09/04	ISSUED FOR BUDGETING

PROJECT NO: 171-15573-00 DATE: 2019/08/29

ORIGINAL SCALE: AS SHOWN

DESIGNED BY: C.MCGUIRE

DRAWN BY: M.A. DUFOUR

CHECKED BY: C.MCGUIRE

DISCIPLINE: ELECTRICAL

TITLE: SITE PLAN LIGHTING AND POWER

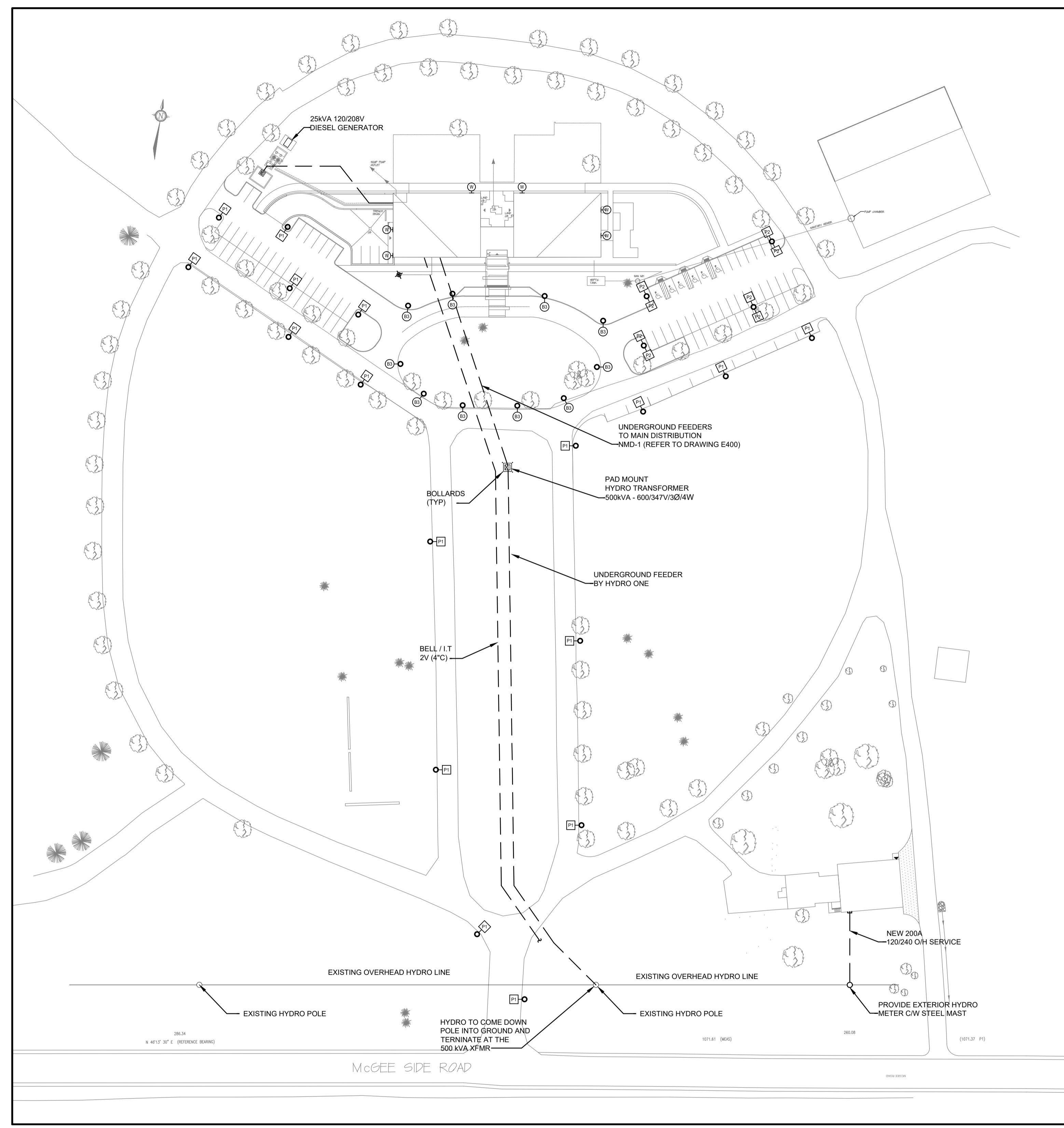
SHEET NUMBER: E100

ISSUE: RE-ISSUED SITE PLAN CTRL

DATE OF: 2019/08/29

FILE No. D07-12-19-0112

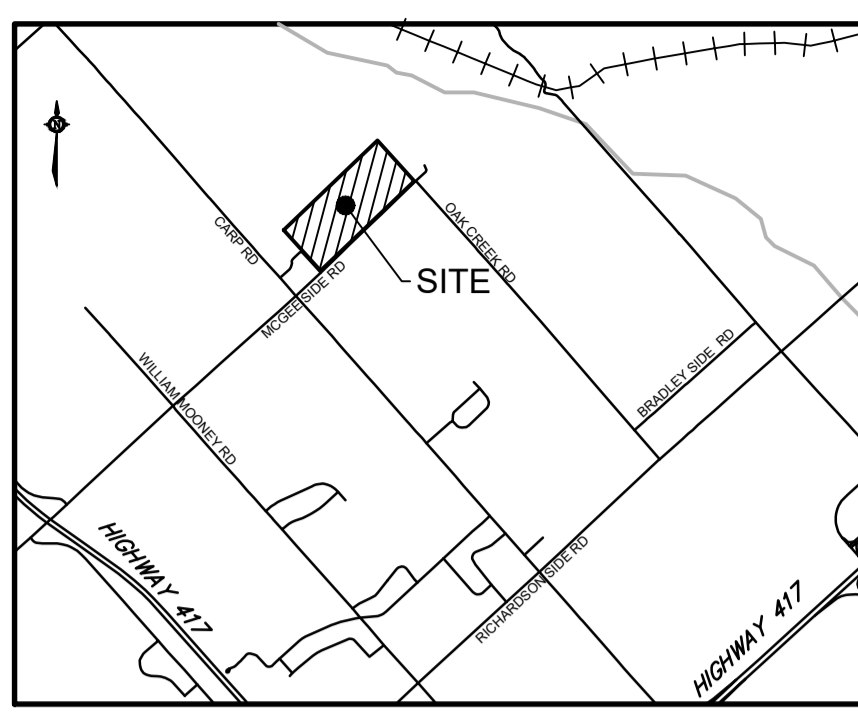
SHEET: A1-S0 841x594mm - PLOTTED ON: December 11, 2019 4:21:18 PM - BY: TABELENA, ANDRE



1 ELECTRICAL SITE - LIGHTING AND POWER LAYOUT.
E100 1:750

APPROVED
By Krishon Walker at 12:26 pm, Dec 29, 2019

Handwritten signature
KRISHON WALKER
PLANNER
PLANNING, INFRASTRUCTURE & ECONOMIC
DEVELOPMENT DEPARTMENT, CITY OF OTTAWA



LEGAL SURVEY INFORMATION TAKEN FROM:
PLAN OF SURVEY OF
PART OF LOT 11
CONCESSION 2
GEOGRAPHIC TOWNSHIP OF HUNTLEY
CITY OF OTTAWA
FARLEY, SMITH & DENIS SURVEYING LTD. 2018

TOPOLOGICAL SURVEY INFORMATION TAKEN FROM:
GRADING AND SERVICING PLAN
2037 MCGEE SIDE ROAD, CITY OF OTTAWA
PINECREST REMEMBRANCE SERVICES
HIGHLAND PARK REMEMBRANCE

NOVATECH ENGINEERING

CITY OF OTTAWA FILE NUMBER:
FILE NO. : D07-12-19-0112

- CONSULTANTS:**
- PROPERTY OWNER:**
PINECREST REMEMBRANCE SERVICES LTD.
2500 BASELINE ROAD
OTTAWA, ON K2C 3H9
(613) 831-7122
 - ARCHITECT:**
HOBIN ARCHITECTURE INCORPORATED
63 PAMILLA STREET
OTTAWA ON K1S 3K7
613-238-7200
 - SITE SERVICING:**
NOVATECH ENGINEERING CONSULTANTS LTD.
SUITE 200 240 MICHAEL COWPLAND DRIVE
OTTAWA, ON K2M 1P6
(613) 254-9843
 - LANDSCAPE:**
CATHERINE H. KIRK LANDSCAPE ARCHITECT
1379 CONCESSION 10 FORMOSA ON K0G 1W0
(519) 623-9324
 - SOILS & ENVIRONMENTAL:**
GEMTEC CONSULTING ENGINEERS & SCIENTISTS
32 STEACIE DRIVE
OTTAWA, ONTARIO, K2K 2A9
(613) 836-1422
 - SURVEY:** FARLEY, SMITH & DENIS SURVEYING LTD
190 COLONNADE ROAD, UNIT #10 OTTAWA, ONTARIO K2E 7J5
(613) 727-8226
 - MECHANICAL:**
BEKOLAY & ASSOCIATES LTD.
SUITE 460 - 505 MARCH ROAD OTTAWA ON K2K 2M5
(613) 254-5566
 - ELECTRICAL:**
WSP
2611 QUEENSWAY DR.
OTTAWA ON K2B 8K2
(613) 690-3752
 - STRUCTURAL:**
DAIDO STRUCTURAL ENGINEERS
#11 - 300 EARL GREY DRIVE SUITE 213
OTTAWA ON K2T 1C1
(613) 302-8972

P:\CADD\PROJECTS\2017 PROJECTS\17-15573-00 HIGHLAND PARK FUNERAL HOME\17-15573-00 ELECTRICAL\100 - SITE PLAN.DWG