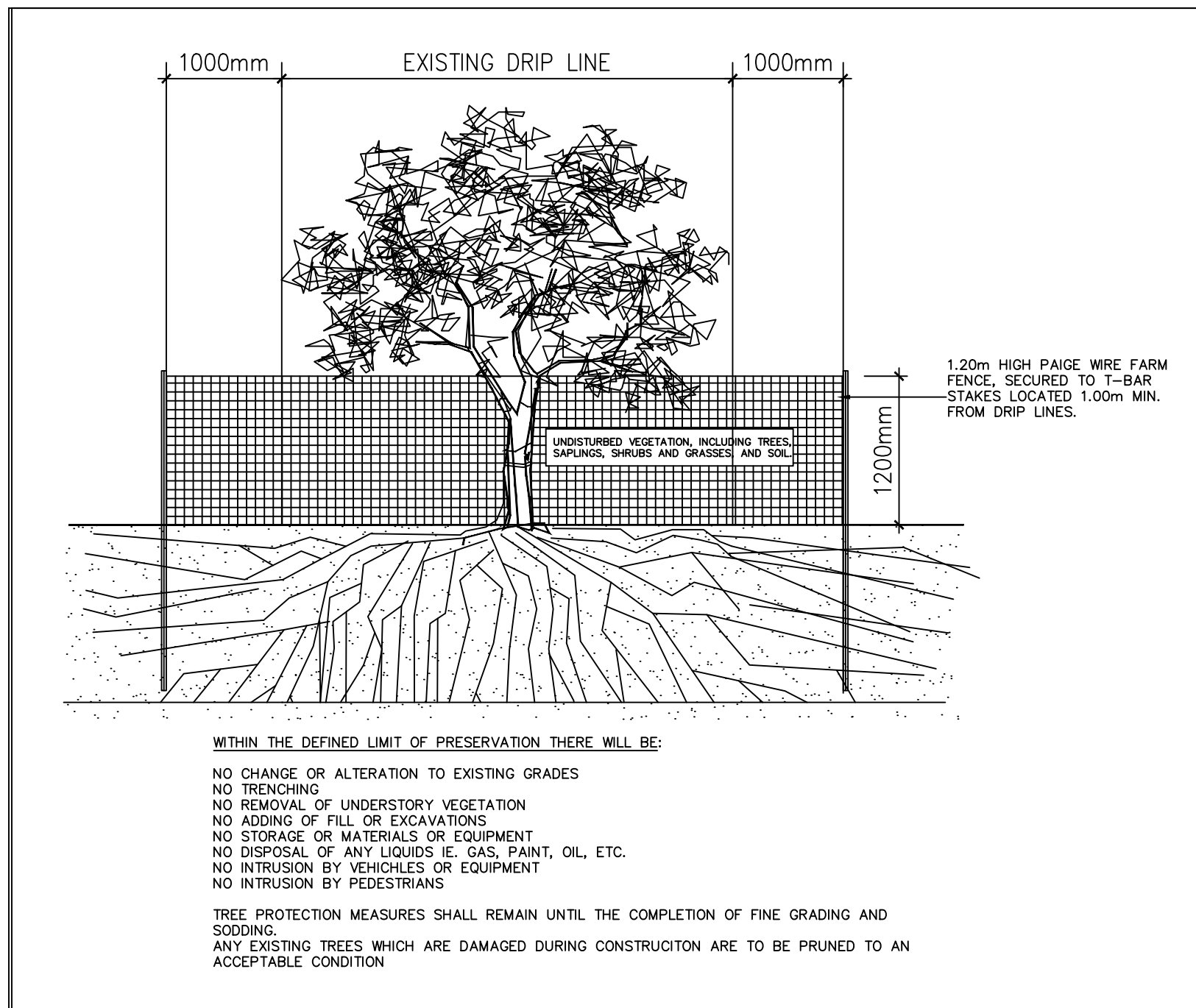
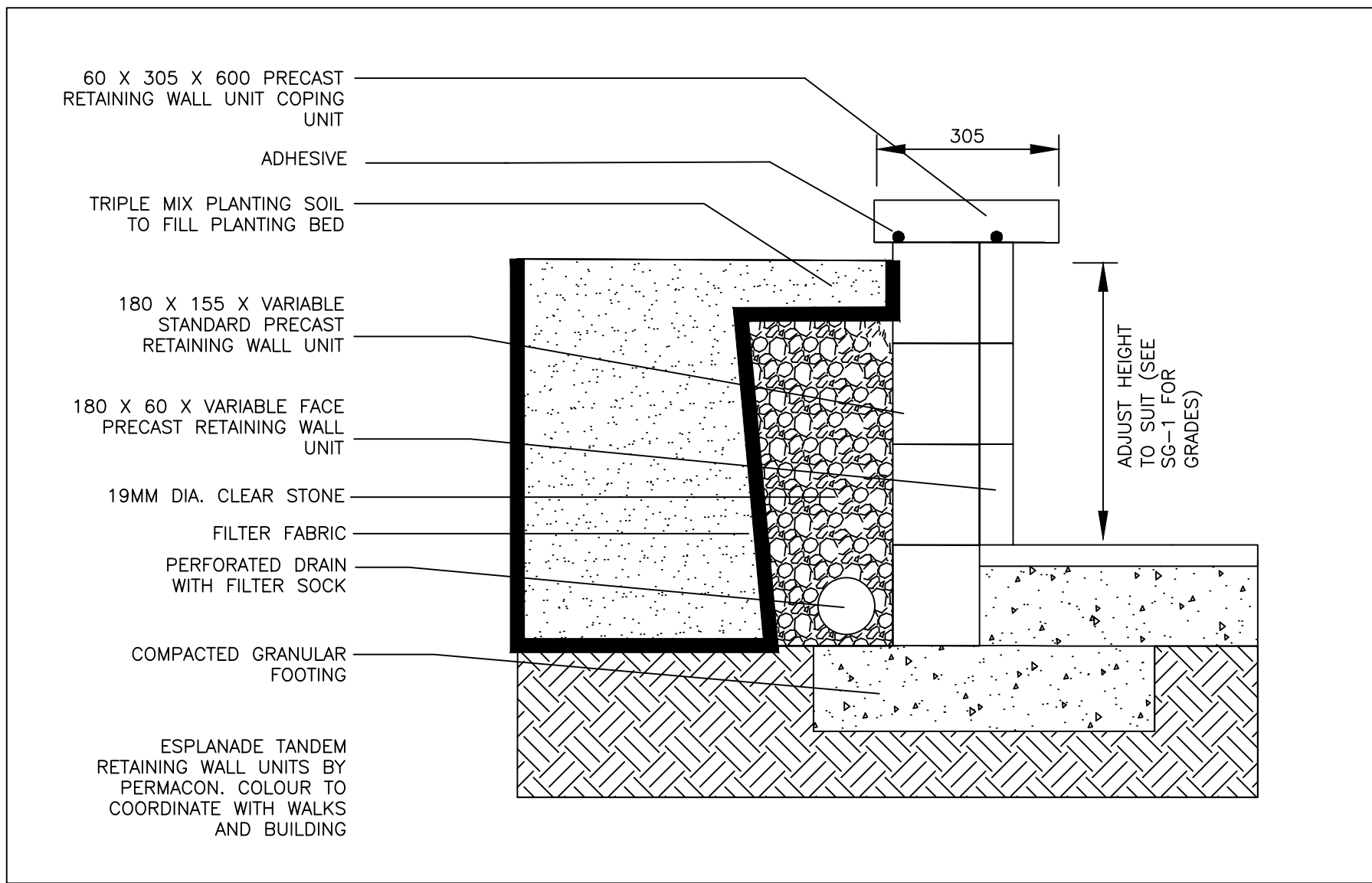


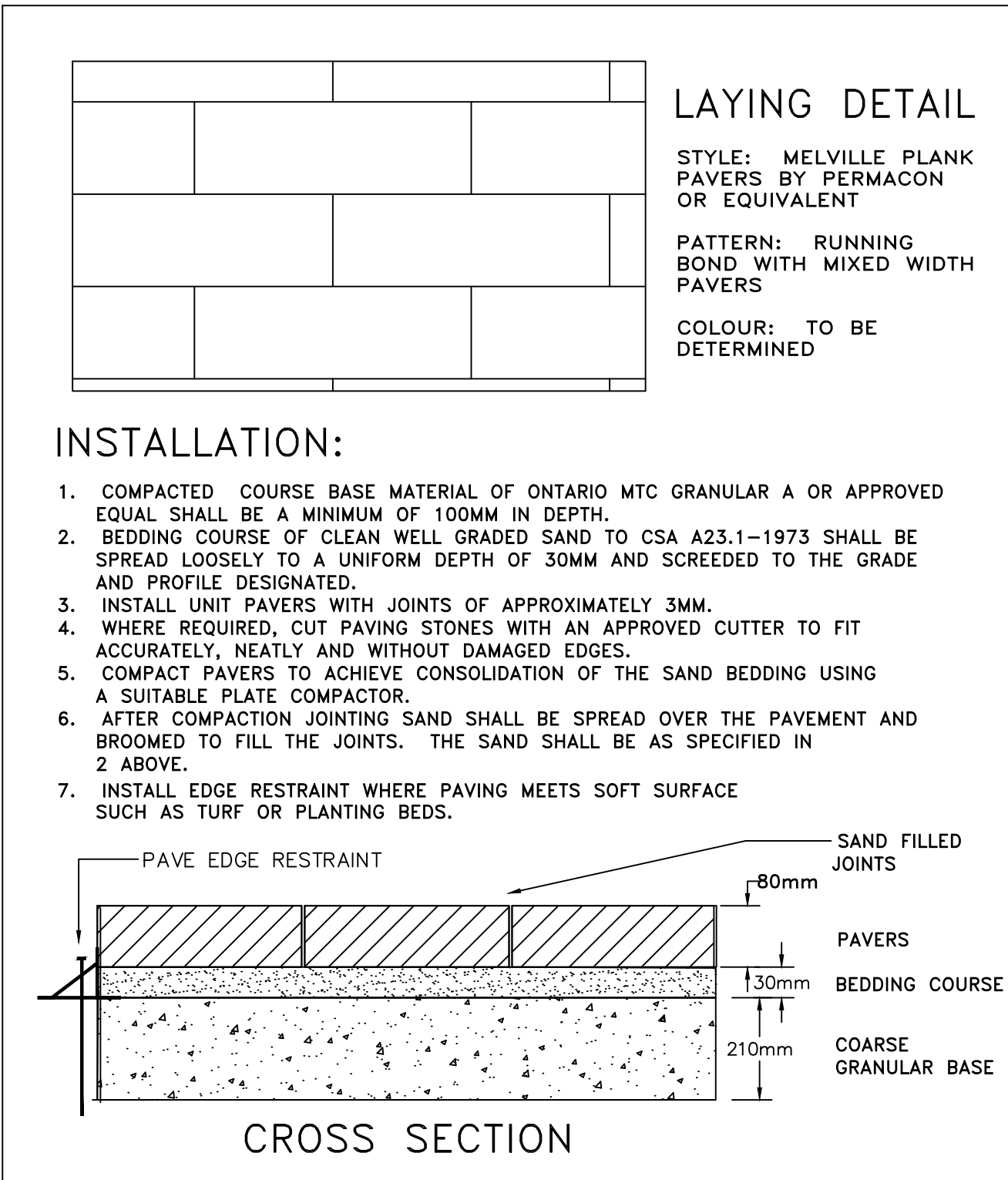
5 RIVERSTONE DETAIL  
L202 SCALE: NTS



7 TREE PRESERVATION FENCING DETAIL  
L202 SCALE: NTS



8 LANDSCAPE RETAINING WALL DETAIL  
L202 SCALE: 1:10



6 UNIT PAVER DETAIL  
L202 SCALE: NTS



**MAGLIN™**

T 800-716-5506  
F 877-260-9393  
WWW.MAGLIN.COM  
SALES@MAGLIN.COM

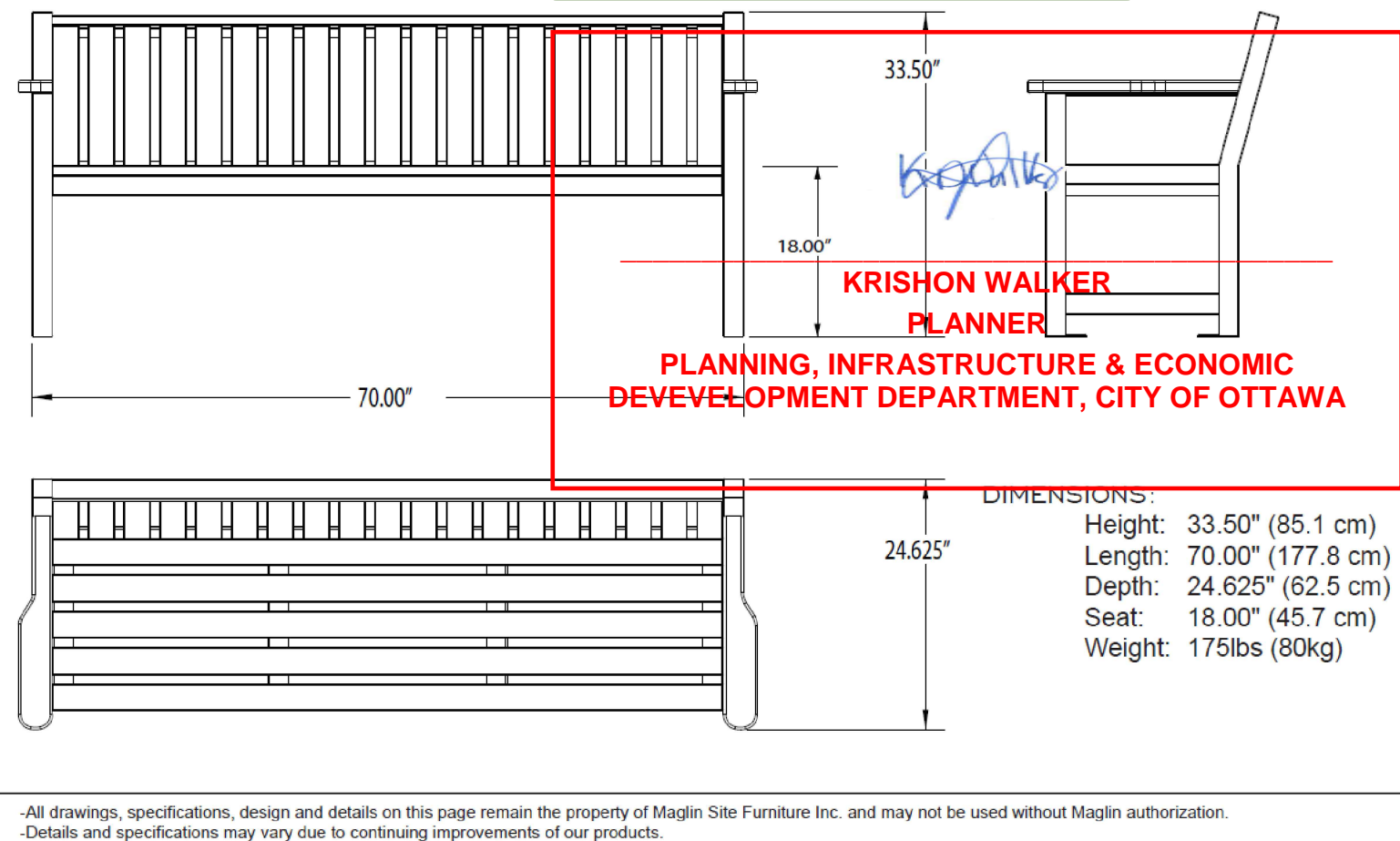
## MLB400 SERIES

**MATERIALS:** Bench frame is made from H.S. steel tube and flat bar. The seat and back employ 1pe wood slats, High Density Paper Composite or recycled plastic slats.

**FINISH:** All steel components are protected with E-Coat rust proofing. The Maglin Powdercoat System provides a durable finish on all metal surfaces. Wood slats are finished with penetrating sealers.

**INSTALLATION:** The bench is delivered pre-assembled. Holes (0.5") are provided in each foot for securing to base.

**TO SPECIFY:** Select MLB400 Series Choose:  
- 1pe - MLB400-W  
- HDPC - MLB400-PCC (Charcoal)  
- MLB400-PCB (Dark Brown)  
- Recycled Plastic - MLB400-RC (Cedar)  
- MLB400-RS (Sage)  
- MLB400-RG (Grey)  
- Powdercoat Color



9 BENCHES  
L202 SCALE: N.T.S.

## LANDSCAPE NOTES

### GENERAL NOTES:

- CONTRACTOR TO VERIFY ALL DIMENSIONS AND CONDITIONS ON SITE PRIOR TO THE COMMENCEMENT OF WORK.
- GRADES WITHIN THE SITE AND AT PROPERTY LINE SHALL NOT EXCEED A 3:1 SLOPE.
- THE CONTRACTOR IS RESPONSIBLE FOR HAVING ALL UNDERGROUND SERVICES AND UTILITIES STAKED OUT PRIOR TO PLANTING.
- TREE PROTECTION:**
  - PROTECTIVE FENCING IS TO BE ERRECTED AROUND ALL EXISTING TREES TO BE PRESERVED WITHIN THE CONSTRUCTION AREA TO 1.0M BEYOND THE "DRIPLINE" AS NOTED ON THE OVERALL LANDSCAPE PLAN.
  - ALL PROTECTIVE FENCING IS TO REMAIN IN PLACE AND IN GOOD REPAIR THROUGHOUT CONSTRUCTION. NO HEAVY EQUIPMENT IS TO BE OPERATED WITHIN THE PROTECTED AREA OF TREES TO BE SAVED.
  - NO EXCAVATION SHOULD BE CARRIED OUT WITHIN THE DRIPLINES OF THE TREES TO BE SAVED.
  - FLOODING WITHIN THE PROTECTED AREA IS TO BE AVOIDED.
  - NO MATERIALS OR EQUIPMENT IS TO BE STORED WITHIN THE PROTECTIVE FENCING.
  - NO CONTAMINANTS ARE TO BE DUMPED WITHIN THE PROTECTIVE FENCING.
  - ANY LIMBS THAT ARE TO BE CUT OR REMOVED TO ACCOMMODATE CONSTRUCTION WORK WILL BE REMOVED CAREFULLY WITH PROPER PRUNING EQUIPMENT.
  - IF ANY ROOT SYSTEMS OF PROTECTED TREES ARE EXPOSED OR DAMAGED BY CONSTRUCTION WORK, THEY SHALL BE TRIMMED NEATLY AND THEN BROOKLIED WITH TOPSOIL TO PREVENT DESICCATION.
  - IF NECESSARY, THE TREES WILL BE GIVEN AN OVERALL PRUNING TO RESTORE THE BALANCE BETWEEN ROOTS AND TOP GROWTH OR TO RESTORE THE APPEARANCE OF THE TREE.
  - ANY PRESERVED TREES THAT HAVE DIED OR HAVE BEEN DAMAGED BEYOND REPAIR, SHALL BE REPLACED BY THE CONTRACTOR AT HIS OWN EXPENSE WITH TREES OF A SIZE AND SPECIES AS APPROVED BY THE OWNER'S REPRESENTATIVE.

### TOPSOIL & FINISH GRADING:

- ALL SOIL SHALL BE TESTED BY A ASTM/CSA ACCREDITED SOIL TESTING LABORATORY AT THE SOURCE BEFORE DELIVERY TO THE SITE.
- THE CONTRACTOR IS RESPONSIBLE FOR AMENDMENTS AS RECOMMENDED BY THE SOIL TESTING LABORATORY.
- TOPSOIL IS TO BE FREE OF SUBSOIL, STONES 50MM IN DIAMETER OF LARGER, ROOTS, WEEDS, DEBRIS AND TOXIC MATERIAL.
- CONTRACTOR TO VERIFY THAT GRADES ARE CORRECT PRIOR TO PLACEMENT OF TOPSOIL.
- CULTIVATE THE ENTIRE AREA TO RECEIVE TOPSOIL TO A MINIMUM DEPTH OF 100mm.
- GRADE SOIL, ELIMINATING UNEVEN AREAS AND LOW SPOTS TO ENSURE POSITIVE DRAINAGE.
- SPREAD TOPSOIL TO THE FOLLOWING MINIMUM DEPTHS AFTER SETTLEMENT:  
150mm FOR SODDED AND SEEDDED AREAS  
150mm FOR SHRUB BEDS  
900mm FOR TREE PLANTING AREAS
- TOPSOIL FOR SODDED AREAS AND PLANTING BEDS TO CONSIST OF:  
60-60% SAND  
6-10% CLAY  
20-40% SILT  
2-5% ORGANIC MATTER  
PH OF 7.5 OR LESS
- THE DEPTH OF TOPSOIL WILL BE INSPECTED PRIOR TO SOD OR SEED APPLICATION.

### PLANTING:

- THE QUANTITIES INDICATED ON THE PLAN SUPERSEDE THE TOTALS ON THE PLANT LIST.
- EXCAVATE AND PROVIDE PLANTING SOILS TO DEPTHS INDICATED BY PLANTING DETAILS.
- ALL PLANT MATERIAL TO CONFORM TO THE CANADIAN NURSERY TRADES ASSOCIATION METRIC SPECIFICATIONS AND STANDARDS.
- THE CONTRACTOR IS TO ENSURE THAT NO OPEN TREE PITS ARE LEFT UNATTENDED ON SITE.
- ALL EVERGREENS ARE TO BE WRAPPED THE FIRST WINTER AT THE EXPENSE OF THE CONTRACTOR.
- ALL TREES & SHRUBS ARE TO BE PLANTED AND STAKED IN ACCORDANCE WITH PLANTING DETAILS.
- OBTAIN APPROVAL FOR SUBSTITUTIONS FROM THE CONSULTANT.
- ALL TREE STAKES ARE TO BE REMOVED AT THE END OF THE WARRANTY PERIOD.
- ALL SHRUBS ARE TO BE INSTALLED IN CONTINUOUS PLANTING BEDS.

### SEEDING:

- LAWN AREAS ARE TO BE SEEDDED WITH A LOW MAINTENANCE SEED MIXTURE CONSISTING OF:  
40% AUDUBON CREEPING RED FESCUE  
20% SOUTHPORT CHEWING FESCUE  
20% CASCADE CHEWING FESCUE  
20% FENWAY CREEPING RED FESCUE  
HYDROSEED AT AT RATE OF 185KG PER HECTARE
- EROSION CONTROL FABRICS TO BE INSTALLED ON ALL SLOPES GREATER THAN OR EQUAL TO 4:1.

### SODDING:

- SOD SHALL BE NO. 1 GRADE NURSERY GROWN CONFORMING TO THE CANADIAN NURSERY TRADES ASSOCIATION SPECIFICATIONS AND STANDARDS.
- ALL SOD IS TO BE PLACED OVER A MINIMUM OF 150mm OF TOPSOIL.
- BOULEVARD IS TO BE RESTORED WITH FINE GRADING AND SODDING BY CONTRACTOR.
- THE BOTTOM OF ALL DRAINAGE SWALES ARE TO BE SODDED A MIN. OF 1.0m WIDE.
- WHERE THERE IS ANY DELAY IN INSTALLATION, THE SOD SHALL BE KEPT MOIST, COOL AND PROTECTED AGAINST ADVERSE WEATHER CONDITIONS AT ALL TIMES UNTIL INSTALLATION.
- MAINTENANCE:**
  - WATER PLANT MATERIAL 3 TIMES A WEEK FOR FIRST 4 WEEKS AND THEN SUFFICIENTLY THEREAFTER TO MAINTAIN OPTIMUM GROWING CONDITIONS UNTIL FINAL ACCEPTANCE (ONE YEAR FROM INSTALLATION).
  - KEEP SOIL WITHIN PLANTING SAUCER AND WITHIN PLANTING BEDS FREE FROM WEEDS UNTIL FINAL ACCEPTANCE.
  - WATER SOD SUFFICIENTLY TO MAINTAIN SOIL UNDER SOD CONTINUALLY MOIST TO DEPTH OF 75mm (MIN OF THREE TIMES PER WEEK FOR FIRST 4 WEEKS).
  - FERTILIZE SODDED AREAS ONE MONTH AFTER SODDING WITH 2:1:1 RATIO FERTILIZER SPREAD EVENLY AT RATE OF 1kg of Nitrogen/100m2 AND WATER IN WELL.
  - MAINTAIN SODDED AND SEEDDED AREAS WEED FREE UNTIL FINAL ACCEPTANCE.
- WARRANTY:**
  - ALL MATERIALS AND WORKMANSHIP TO BE GUARANTEED FOR ONE FULL YEAR FROM SUBSTANTIAL COMPLETION OF WORK.
  - THE CONTRACTOR IS TO REMEDY ANY DEFECTS AND PAY FOR ANY DAMAGE TO OTHER WORK RESULTING THEREFROM WITHIN A PERIOD OF ONE YEAR. ALL PLANT MATERIAL USED AS REPLACEMENTS SHALL BE OF THE SAME QUALITY AND REQUIREMENTS PRESCRIBED FOR ORIGINAL MATERIALS.

## PLANTING NOTES

CONTRACTOR IS RESPONSIBLE FOR OBTAINING WRITTEN CONFIRMATION OF UTILITY LOCATES PRIOR TO COMMENCING DIGGING

### TRUNK PROTECTION:

- TRUNK WRAPPING IN PLACE PRIOR TO PLANTING TO BE TOTALLY REMOVED FOR TRUNK INSPECTION
- WHEN REQUIRED USE ONLY APPROVED TREE WRAP MATERIAL AND INSTALL FROM THE GROUND UP TO ABOVE THE LOWEST BRANCHES
- WRAP WITH PLASTIC RODENT GUARDS TO FIRST BRANCHES

### PLANTING SOIL:

- TO BE 1/3 TOPSOIL, 1/3 MANURE, 1/3 SAND
- HOLE TO BE BACKFILLED AND CONCURRENTLY TAMPED AND WATERED TO ELIMINATE AIR POCKETS

### WATERING:

- ENSURE TREES ARE THOROUGHLY WATERED AT PLANTING AND AFTER AS SPECIFIED IN NOTES

### MULCHING:

- MULCH WITH SHREDDED BARK OR COMPOSTED HARDWOOD CHIPS TO A MAXIMUM DEPTH OF 75mm. OVER AN AREA OF THE ROOTBALL. KEEP MULCH 150MM AWAY FROM TRUNK

### STAKES AND TIES:

- STAKE IMMEDIATELY
- USE BIODEGRADABLE MATERIAL SUCH AS FOLDED BURLAP, ETC.
- STAKES TO BE PLACED TO PREVENT DAMAGE TO ADJACENT BRANCHES
- USE 2 WOODEN STAKES TO BE DRIVEN BESIDE AND BELOW ROOTBALL 300MM
- USE 3 WOODEN STAKES OR APPROVED EQUAL FOR LARGE TREES WHEN SPECIFIED

### ROOTBALL, BURLAP, TWINE:

- CUT AND REMOVE ALL WIRE, ROPE, BURLAP AND TWINE FROM AROUND TRUNK AND THE TOP 1/3 OF ROOTBALL

### FINISHED GRADE

### DECIDUOUS TREE PLANTING DETAIL N.T.S.

### PLANTING AREA:

- ACTUAL HOLE TO BE 300MM WIDER AROUND THE PERIMETER OF THE ROOTBALL
- SOIL PREPARATION AREA TO BE 5X ROOTBALL DIAMETER
- SCARIFY SOIL PREPARATION AREA TO A DEPTH OF 300MM FOR AERATION

### PLANTING DEPTH:

- IN HEAVY CLAY OR POORLY DRAINED SOIL ALL WOODY PLANTS TO BE PLACED SO THAT THE ROOT COLLAR IS POSITIONED 75-100MM HIGHER THAN SURROUNDING GRADE

### CROWN PRUNING:

- PRUNE AT PLANTING TO CAREFULLY REMOVE DEAD, BROKEN, DAMAGED AND DOUBLE LEADERS. NEVER CUT A LEADER

### STAKES AND TIES:

- STAKE IMMEDIATELY
- USE 3 WOOD STAKES FOR TREES UP TO 2M HEIGHT
- STAKES TO BE DRIVEN 300MM INTO SOLID SOIL AT AN ANGLE NO LESS THAN 45d
- SPACES IN 1/2'S OF A CIRCLE
- USE BIODEGRADABLE MATERIAL SUCH AS FOLDED BURLAP STAPLED TO STAKE WITH

### CONIFEROUS TREE PLANTING DETAIL N.T.S.

### PLANTING AREA:

- ACTUAL HOLE TO BE 300MM WIDER AROUND THE PERIMETER OF THE ROOTBALL
- SOIL PREPARATION AREA TO BE 5X ROOTBALL DIAMETER
- SCARIFY SOIL PREPARATION AREA TO A DEPTH OF 300MM FOR AERATION

### PLANTING DEPTH:

- IN HEAVY CLAY OR POORLY DRAINED SOIL ALL WOODY PLANTS TO BE PLACED SO THAT THE ROOT COLLAR IS POSITIONED 75-100MM HIGHER THAN SURROUNDING GRADE

### CROWN PRUNING:

- PRUNE AT PLANTING TO CAREFULLY REMOVE DEAD, BROKEN, DAMAGED AND DOUBLE LEADERS. NEVER CUT A LEADER

### STAKES AND TIES:

- STAKE IMMEDIATELY
- USE 3 WOOD STAKES FOR TREES UP TO 2M HEIGHT
- STAKES TO BE DRIVEN 300MM INTO SOLID SOIL AT AN ANGLE NO LESS THAN 45d
- SPACES IN 1/2'S OF A CIRCLE
- USE BIODEGRADABLE MATERIAL SUCH AS FOLDED BURLAP STAPLED TO STAKE WITH

### CONIFEROUS TREE PLANTING DETAIL N.T.S.

### PLANTING AREA:

- ACTUAL HOLE TO BE 300MM WIDER AROUND THE PERIMETER OF THE ROOTBALL
- SOIL PREPARATION AREA TO BE 5X ROOTBALL DIAMETER
- SCARIFY SOIL PREPARATION AREA TO A DEPTH OF 300MM FOR AERATION

### PLANTING DEPTH:

- IN HEAVY CLAY OR POORLY DRAINED SOIL ALL WOODY PLANTS TO BE PLACED SO THAT THE ROOT COLLAR IS POSITIONED 75-100MM HIGHER THAN SURROUNDING GRADE

### CROWN PRUNING:

- PRUNE AT PLANTING TO CAREFULLY REMOVE DEAD, BROKEN, DAMAGED AND DOUBLE LEADERS. NEVER CUT A LEADER

### STAKES AND TIES:

- STAKE IMMEDIATELY
- USE 3 WOOD STAKES FOR TREES UP TO 2M HEIGHT
- STAKES TO BE DRIVEN 300MM INTO SOLID SOIL AT AN ANGLE NO LESS THAN 45d
- SPACES IN 1/2'S OF A CIRCLE
- USE BIODEGRADABLE MATERIAL SUCH AS FOLDED BURLAP STAPLED TO STAKE WITH

### CONIFEROUS TREE PLANTING DETAIL N.T.S.

### PLANTING AREA:

- ACTUAL HOLE TO BE 300MM WIDER AROUND THE PERIMETER OF THE ROOTBALL
- SOIL PREPARATION AREA TO BE 5X ROOTBALL DIAMETER
- SCARIFY SOIL PREPARATION AREA TO A DEPTH OF 300MM FOR AERATION

### PLANTING DEPTH:

- IN HEAVY CLAY OR POORLY DRAINED SOIL ALL WOODY PLANTS TO BE PLACED SO THAT THE ROOT COLLAR IS POSITIONED 75-100MM HIGHER THAN SURROUNDING GRADE

### CROWN PRUNING:

- PRUNE AT PLANTING TO CAREFULLY REMOVE DEAD, BROKEN, DAMAGED AND DOUBLE LEADERS. NEVER CUT A LEADER

### STAKES AND TIES:

- STAKE IMMEDIATELY
- USE 3 WOOD STAKES FOR TREES UP TO 2M HEIGHT
- STAKES TO BE DRIVEN 300MM INTO SOLID SOIL AT AN ANGLE NO LESS THAN 45d
- SPACES IN 1/2'S OF A CIRCLE
- USE BIODEGRADABLE MATERIAL SUCH AS FOLDED BURLAP STAPLED TO STAKE WITH

### CONIFEROUS TREE PLANTING DETAIL N.T.S.

### PLANTING AREA:

- ACTUAL HOLE TO BE 300MM WIDER AROUND THE PERIMETER OF THE ROOTBALL
- SOIL PREPARATION AREA TO BE 5X ROOTBALL DIAMETER
- SCARIFY SOIL PREPARATION AREA TO A DEPTH OF 300MM FOR AERATION

### PLANTING DEPTH:

- IN HEAVY CLAY OR POORLY DRAINED SOIL ALL WOODY PLANTS TO BE PLACED SO THAT THE ROOT COLLAR IS POSITIONED 75-100MM HIGHER THAN SURROUNDING GRADE

### CROWN PRUNING:

- PRUNE AT PLANTING TO CAREFULLY REMOVE DEAD, BROKEN, DAMAGED AND DOUBLE LEADERS. NEVER CUT A LEADER

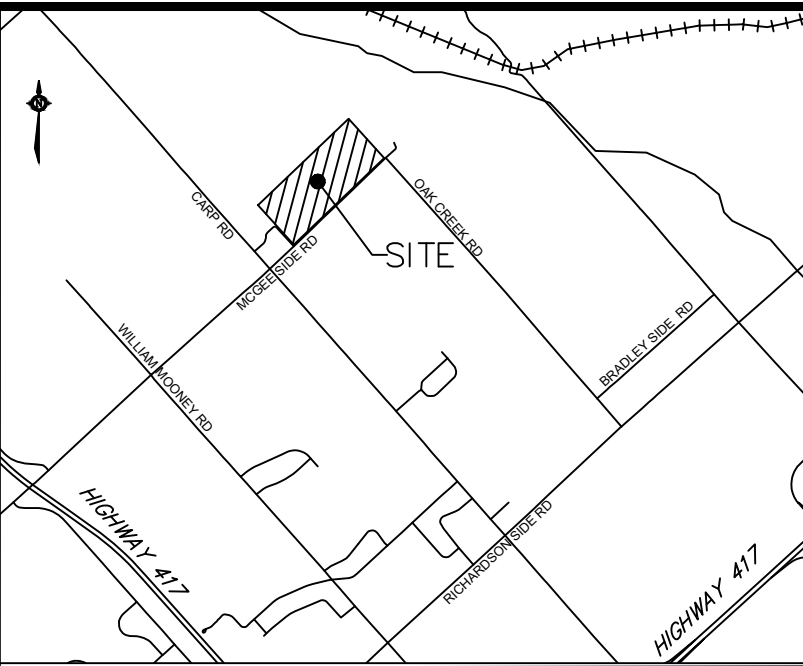
### STAKES AND TIES:

- STAKE IMMEDIATELY
- USE 3 WOOD STAKES FOR TREES UP TO 2M HEIGHT
- STAKES TO BE DRIVEN 300MM INTO SOLID SOIL AT AN ANGLE NO LESS THAN 45d
- SPACES IN 1/2'S OF A CIRCLE
- USE BIODEGRADABLE MATERIAL SUCH AS FOLDED BURLAP STAPLED TO STAKE WITH

### CONIFEROUS TREE PLANTING DETAIL N.T.S.

### SHRUB PLANTING

### BALLED & BURLAPPED & CONTAINER GROWN N.T.S.

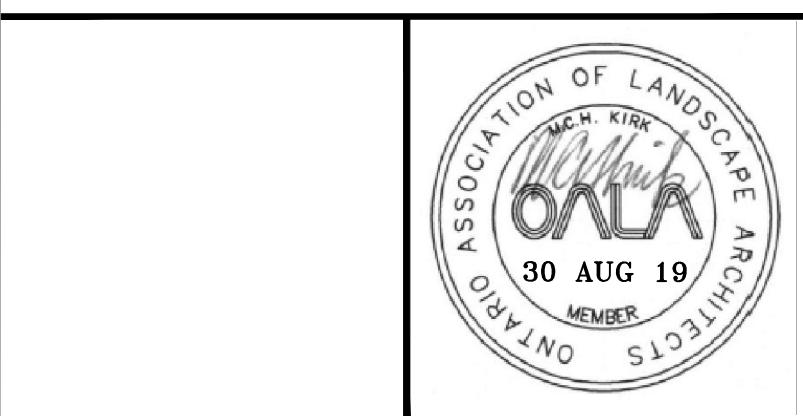


KEY PLAN Scale: n.t.s.

CONSULTANTS:	SOILS & ENVIRONMENTAL:
PROPERTY OWNER: PINECREST REMEMBRANCE SERVICES LTD. 2500 BASELINE ROAD OTTAWA, ONTARIO K2C 3H9 (613) 829-7122	GENETEC CONSULTING ENGINEERS & SURVEYORS 32 STEAKIE DRIVE OTTAWA, ONTARIO K2K 2A9 (613) 829-4444
ARCHITECT: HOBAN ARCHITECTURE INCORPORATED 49 PAULLA STREET OTTAWA ON K1S 9K7 (613) 721-0226	SURVEY: PARLEY, SMITH & PENS SURVEYING LTD. 190 COLLADE ROAD, UNIT #10 OTTAWA, ONTARIO K2E 1L5 (613) 721-0226
SITE SERVICES: NAVATECH ENGINEERING CONSULTANTS LTD. SUITE 100 140 MICHAEL CONLAD DRIVE OTTAWA ON K2M 1P6 (613) 254-2649	MECHANICAL: DEKALAY & ASSOCIATES LTD. SUITE 400 - 905 MARCH ROAD OTTAWA ON K2K 2M5 (613) 254-5566
LANDSCAPE: CATHERINE H. KIRK LANDSCAPE ARCHITECT 1379 CONNEXION 10, FORMOSA ONT. K2C 1W1 (519) 623-9324	ELECTRICAL: WSP 248 GLENSVIEW DR OTTAWA ON K2B 8K3 (613) 430-5792
	STRUCTURAL: DART STRUCTURAL ENGINEERS #1 - 300 EARL GREY DRIVE SUITE 210 OTTAWA ON K1T 1C1 (613) 925-8972

No.	Date	Description
6	16 DEC 19	ISSUED FOR BUILDING PERMIT
5	20 NOV 19	RESUBMIT FOR SITE PLAN APPROVAL
4	30 AUG 19	RESUBMIT FOR SITE PLAN APPROVAL
3	15 JUN 19	SUBMIT FOR SITE PLAN APPROVAL
2	29 MAY 19	COORDINATED WITH GRADING/SERVICING
1	24 AUG 18	ISSUED FOR PRICING

## Revisions:



**CATHERINE H. KIRK**  
Landscape Architect  
1379 CONNEXION 10, FORMOSA, ONT. N0G 1W0  
TEL: (519) 623-9324

**Pinecrest Remembrance Services**  
2500 Baseline Road, Ottawa, Ont. K2C 3H9  
613-829-3600

**HIGHLAND PARK REMEMBRANCE**  
2037 MCGEE SIDE ROAD  
OTTAWA, ONTARIO

**LANDSCAPE NOTES & DETAILS**

Scale: AS NOTED

Date: 13 MARCH 2018

Project No.: 201721

File No.: D07-12-19-0112

Drawing Number: L202