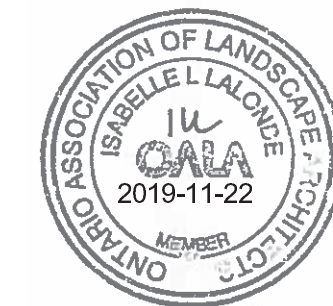


- TOPOGRAPHIC SURVEY AND BENCHMARK COMPLETED BY STANTEC GEOMATICS LTD. DATED JULY 10, 2009.
- SITE PLAN PREPARED BY FIGURR ARCHITECTS DATED NOVEMBER 2019.

4	REVISED SITE PLAN	CTL	ILL	2019.11.22
3	REVISIONS BASED ON NEW SITE PLAN	CTL	CTL	2019.08.21
2	REVISED AS PER CITY COMMENTS	CTL	CTL	2019.08.14
1	ISSUED FOR SITE PLAN APPROVAL	MS	ILL	2018.11.19

Revision	By	Appd.	YYYY.MM.DD
File Name: 160401438_LB	MS	ILL	2018.11.08
	Dwn.	Dgn.	Chkd.



ROBINSON VILLAGE I
LIMITED PARTNERSHIP

5 STOREY APARTMENT
19 ROBINSON AVENUE
OTTAWA, ONTARIO

LANDSCAPE PLAN

Project No.	Scale
160401438	1:100
Drawing No.	Sheet
	Revision

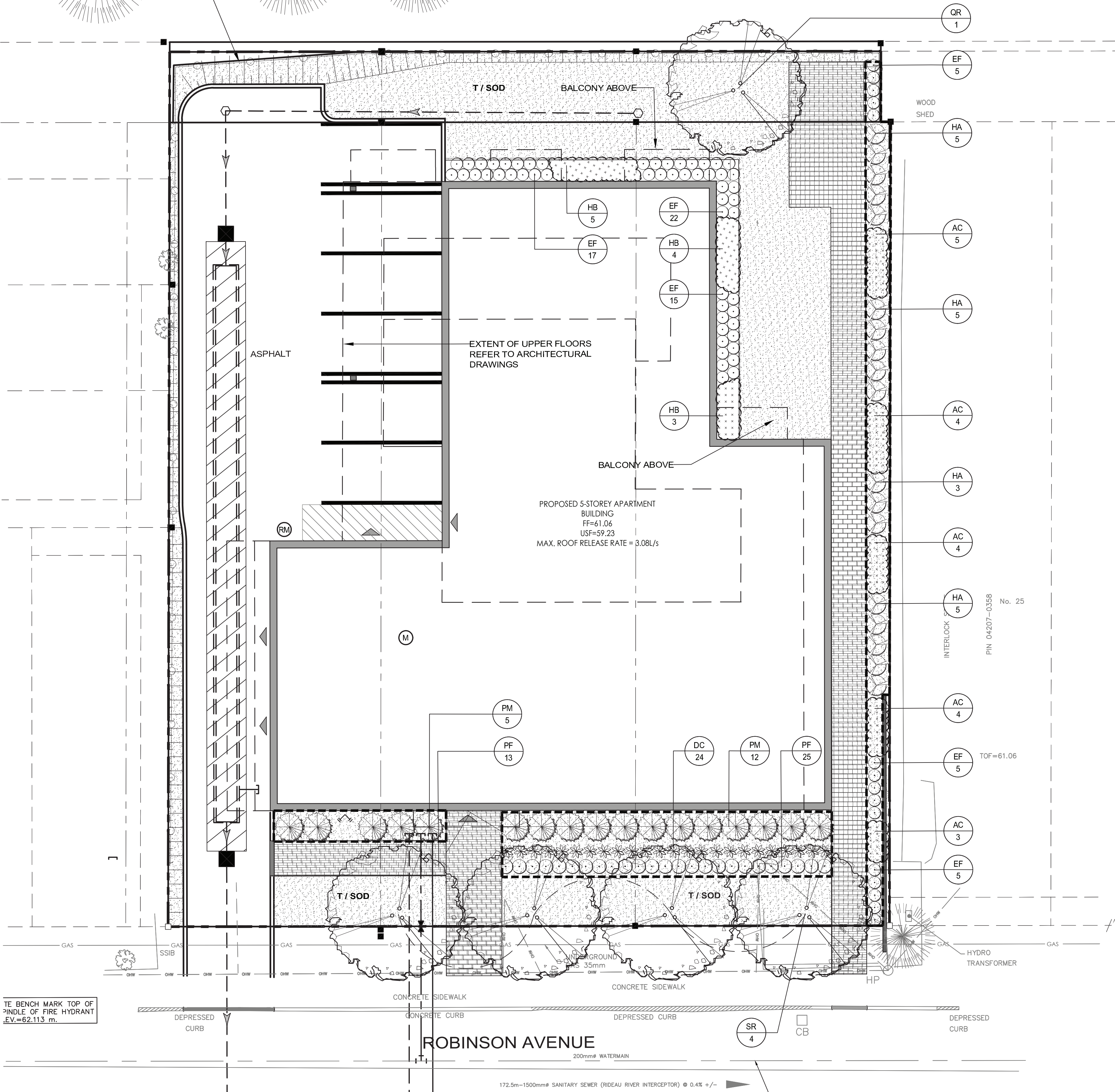
PLANT LIST

QTY	KEY	BOTANICAL NAME	COMMON NAME	SIZE	REMARKS
DECIDUOUS TREES - REFER TO DETAIL 1/ L300					
1	QR	Quercus rubra	Red Oak	60 mm (cal.)	W.B
4	SR	Syringa reticulata 'Ivory Silk'	Ivory Silk Lilac	60 mm (cal.)	W.B
DECIDUOUS SHRUBS - REFER TO DETAIL 2/ L300					
18	HA	Hydrangea arborescens 'Invincibelle Wee White'	Wee White Invincibelle Hydrangea	1 Gallon	Potted; Plant at 800 mm o/c
25	PF	Potentilla fruticosa 'Gold Star'	Gold Star Cinquefoil	3 Gallon	C.G.; Plant at 600 mm o/c
CONIFEROUS SHRUBS - REFER TO DETAIL 2/ L300					
17	PM	Pinus mugo 'Slowmound'	Slowmound Mugo Pine	3 Gallon	Potted; Plant at 1200 mm o/c
BROAD-LEAVED EVERGREEN SHRUBS - REFER TO DETAIL 2/ L300					
69	EF	Euonymus fortunei 'Interbowli'	Blondy Euonymus	3 Gallon	Potted; Plant at 500 mm o/c
PERENNIALS / ORNAMENTAL GRASSES - REFER TO DETAIL 3/ L300					
20	AC	Astilbe chinensis x 'Jaquethi' 'Superba'	Superba Astilbe	1 Gallon	Potted; Plant at 800 mm o/c
24	DC	Deschampsia caespitosa 'Northern Lights'	Northern Lights Tufted Hair Grass	1 Gallon	Potted; Plant at 600 mm o/c
12	HB	Hosta Bressingham Blue	Bressingham Blue Hosta	1 Gallon	Potted; Plant at 900 mm o/c

GENERAL LANDSCAPE PLAN NOTES

- REFER TO TREE PRESERVATION PLAN FOR INFORMATION RELATED TO TREE REMOVAL / TREE PROTECTION DIRECTIONS. UNLESS OTHERWISE NOTED, EXISTING VEGETATED AREAS ON ADJACENT PROPERTIES SHALL REMAIN AND BE PROTECTED BEFORE, DURING, AND AFTER CONSTRUCTION.
- SOD SHALL BE KENTUCKY BLUEGRASS SOD INSTALLED OVER 135mm OF TOPSOIL. SOD SHALL BE INSTALLED THROUGHOUT WITHIN LIMIT OF WORK AND IN ALL DISTURBED AREAS OUTSIDE THE LIMIT OF WORK. SOD SHALL BE INSTALLED AS PER OPSS 803.
- CONTRACTOR TO LOCATE AND STAKE ALL UTILITIES PRIOR TO ANY WORK ON THE SITE. DO NOT PLANT DIRECTLY ABOVE UNDERGROUND UTILITIES. REPORT ANY DISCREPANCIES TO THE LANDSCAPE ARCHITECT FOR DIRECTION.
- MAINTAIN A MINIMUM DISTANCE OF 2.0m FROM ALL UNDERGROUND UTILITIES.
- NO TREES SHALL BE PLANTED UNDER OVERHEAD WIRES.
- THE LANDSCAPE ARCHITECT MAY ADJUST THE LOCATION OF PLANTING PRIOR TO PLANTING TO MINIMIZE CONFLICTS WITH UTILITIES, DRIVEWAYS AND INTERSECTION VISIBILITY.
- CONTRACTOR SHALL SUPPLY ALL MATERIALS IN QUANTITIES SUFFICIENT TO COMPLETE WORK SHOWN ON THESE DRAWINGS. ANY DISCREPANCIES SHALL BE REPORTED TO THE LANDSCAPE ARCHITECT FOR DIRECTION.
- DO NOT MAKE SUBSTITUTIONS OF MATERIALS, PRODUCTS OR QUANTITIES WITHOUT PRIOR WRITTEN PERMISSION OF THE LANDSCAPE ARCHITECT.
- THE CONTRACTOR TO MAKE GOOD TO THE SATISFACTION OF THE LANDSCAPE ARCHITECT ANY AREAS DAMAGED BY THE WORK.
- UPON THE COMPLETION OF WORK EACH DAY, REMOVE ALL DEBRIS, GARBAGE AND SURPLUS MATERIALS FROM THE SITE. KEEP THE SITE CLEAN AND USEABLE AT ALL TIMES.
- ALL WORKMANSHIP AND MATERIALS (INCLUDING PLANTS) TO BE GUARANTEED FOR ONE FULL YEAR FOLLOWING FINAL ACCEPTANCE OF THE PROJECT.
- THE CONTRACTOR SHALL REMOVE ALL T-BAR AND WOODEN TREE STAKES PRIOR TO ASSUMPTION BY THE OWNER.
- AT THE TIME OF INSPECTION FOR ACCEPTANCE ALL TREE PITS, AND BEDS SHALL BE CULTIVATED, FREE OR WEEDS, LEAVES, BROKEN BRANCHES AND DEBRIS.

PROPOSED BOARD ON
BOARD PRIVACY FENCE
REFER TO DETAIL 4/ L300



TE BENCH MARK TOP OF
PINDLE OF FIRE HYDRANT
E.V.=62.113 m.

1 LANDSCAPE PLAN
1:100