

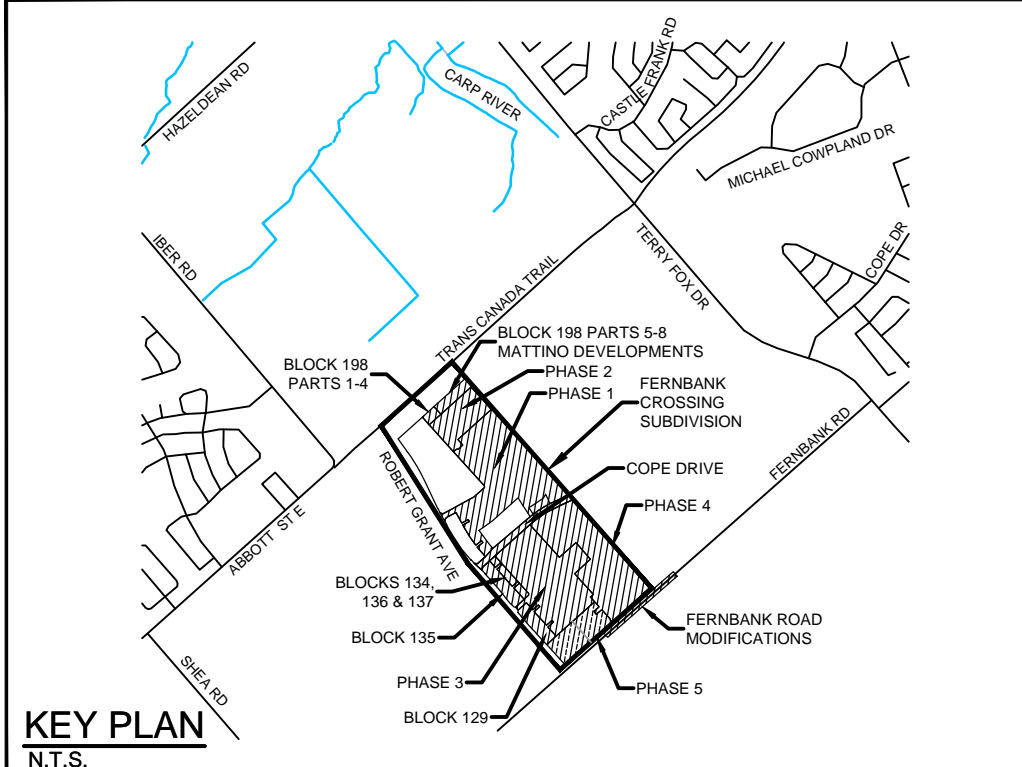
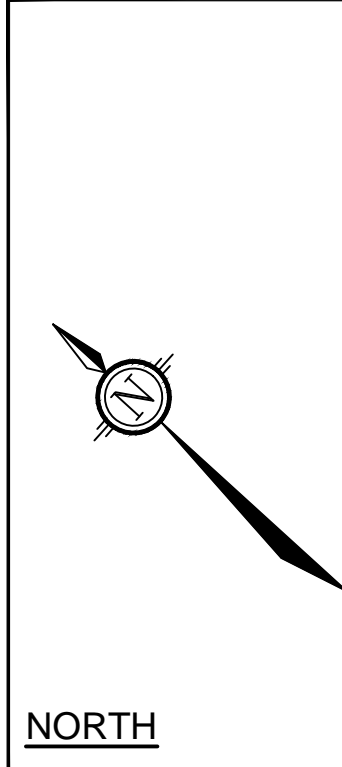
Derrick Moodie

DERRICK MOODIE
MANAGER
PLANNING, INFRASTRUCTURE & ECONOMIC
DEVELOPMENT DEPARTMENT, CITY OF OTTAWA

APPROVED

By Kathy Rygus at 10:34 am, Nov 22, 2019

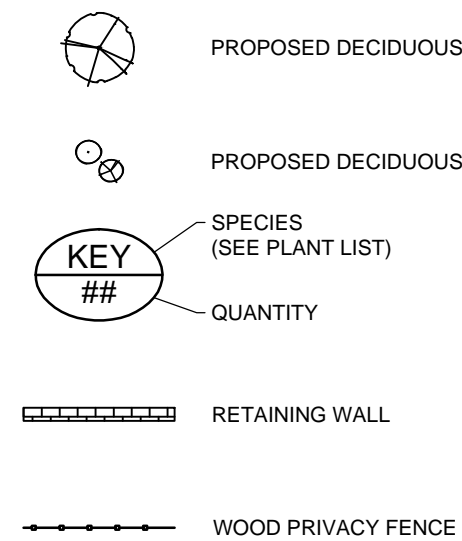
| KEY | QTY | BOTANICAL NAME | COMMON NAME | SIZE | COND | SPACING |
|-------------------------|-----|--|-----------------------------|----------|------|----------|
| Deciduous Trees | | | | | | |
| ARN | 2 | Acer rubrum 'Northwood' | Northwood Red Maple | 60mm Cal | WB | As Shown |
| ASB | 4 | Acer saccharum 'Barrett Cole' | Apollo Sugar Maple | 50mm Cal | WB | As Shown |
| AXB | 4 | Amelanchier x grandiflora 'Ballarina' | Ballarina Serviceberry | 50mm Cal | WB | As Shown |
| AXP | 3 | Amelanchier x grandiflora 'Princess Diana' | Princess Diana Serviceberry | 50mm Cal | WB | As Shown |
| CRC | 8 | Crataegus crus-galli 'nervia' | Thornless Cockspur Hawthorn | 50mm Cal | WB | As Shown |
| GTI | 3 | Gleditsia triacanthos var. inermis 'Impcoke' | Imperial Honeylocust | 60mm Cal | WB | As Shown |
| MSL | 12 | Malus 'Sir Lancelot' | Sir Lancelot Crabapple | 45mm Cal | WB | As Shown |
| MSR | 8 | Malus sargenti 'Rosea' | Pink Sargent Crabapple | 45mm Cal | WB | As Shown |
| SR | 5 | Syringa reticulata | Japanese Tree Lilac | 50mm Cal | WB | As Shown |
| TCH | 3 | Tilia cordata 'Halka' | Summer Sprite Linden | 50mm Cal | WB | As Shown |
| Deciduous Shrubs | | | | | | |
| Cd | 29 | Cornus sericea 'Farrow' | Arctic Fire Dogwood | 50cm HT | PT | As Shown |
| DI | 29 | Diervilla lonicera | Bush Honeysuckle | 50cm HT | PT | As Shown |



PLANTING NOTES

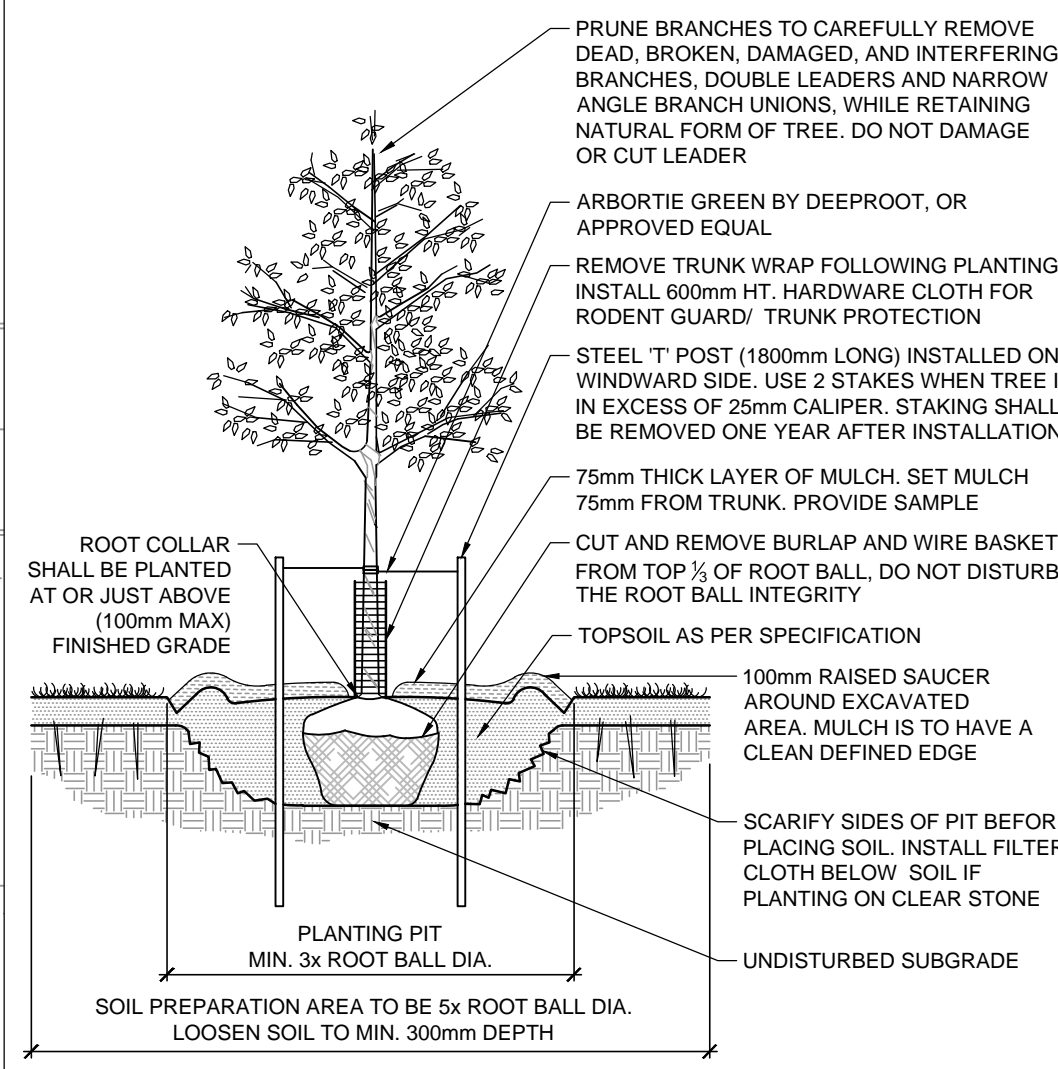
- This drawing shall be read in conjunction with all relevant Architectural, Engineering, and related drawings and documents.
- Refer to Engineering Drawings for Grading. Provide drainage as indicated in grading plan. Round all tops and toes of slopes, smoothly. Compact all areas to 95% Standard Proctor Density unless otherwise noted.
- Refer to Architectural Drawings for site layout.
- Refer to Engineering Drawings for site servicing.
- Contractor must contact utility companies for locates prior to excavation or planting.
- It is essential to use the plans and details in conjunction with the specifications and notes.
- Existing trees to be retained shall be protected according to the contract detail and specifications.
- Plant material shall be No. 1 Grade and shall comply with Canadian Standards for Nursery Stock (latest edition) published by the Canadian Nursery Landscape Association. Use plant material with strong fibrous root system free of disease, defects or injuries, and structurally sound. Use trees with straight trunks, well and characteristically branched for species. Obtain approval from consultant of plant material at source prior to digging. All trees and shrubs shall be container grown, potted, W/B or B/B, as indicated on Plant List. Bare root planting will only be acceptable for certain species and as approved by the Landscape Architect.
- Plant material substitutions shall not be permitted without the written approval from the consultant, with 48 hours notice, prior to shipping plant material.
- Plant locations are schematic / approximate only. Contractor shall stake out locations on site for approval by the Landscape Architect prior to installation. The illustrated number of plants shown in the Planting Plan supersedes the estimated number in the Plant List. Contractor to report any discrepancies to the Landscape Architect prior to installation. Contractor will assume full responsibility if the Landscape Architect is not notified.
- Shrubs, Perennials, Vines, and Groundcovers shall be planted in a continuous planting bed of 450mm depth with approved topsoil covered with 75mm depth shredded bark mulch.
- Ensure trees are thoroughly watered following planting. Monitor material and ensure adequate moisture until acceptance.
- In heavy clay or poorly drained soils, set root ball with root collar 75-100mm higher than finished grade.
- Sod and/or seed areas to receive 100mm depth topsoil as specified. Sod shall be No. 1 Kentucky Bluegrass Sod grown from minimum mixture of 3 Kentucky Bluegrass cultivars. Quality and source shall comply with Canadian Standards for Nursery Stock, Section 17, (latest edition) published by the Canadian Nursery Landscape Association. Unless otherwise specified, turf is to be maintained by the contractor until a second cutting is accepted by the Landscape Architect.
- Apply the following mineral fertilizer unless soil tests show other requirements: Sodded areas - (8-32-16) 8% Nitrogen, 32% Phosphorus, 16% Potash at a rate of 350g/m². Planting Beds - (8-32-16) - 8% Nitrogen, 32% Phosphorus, 16% Potash as per manufacturer specifications.
- Reinstate all areas damaged or disturbed beyond the Limit of Work.

LANDSCAPE LEGEND:



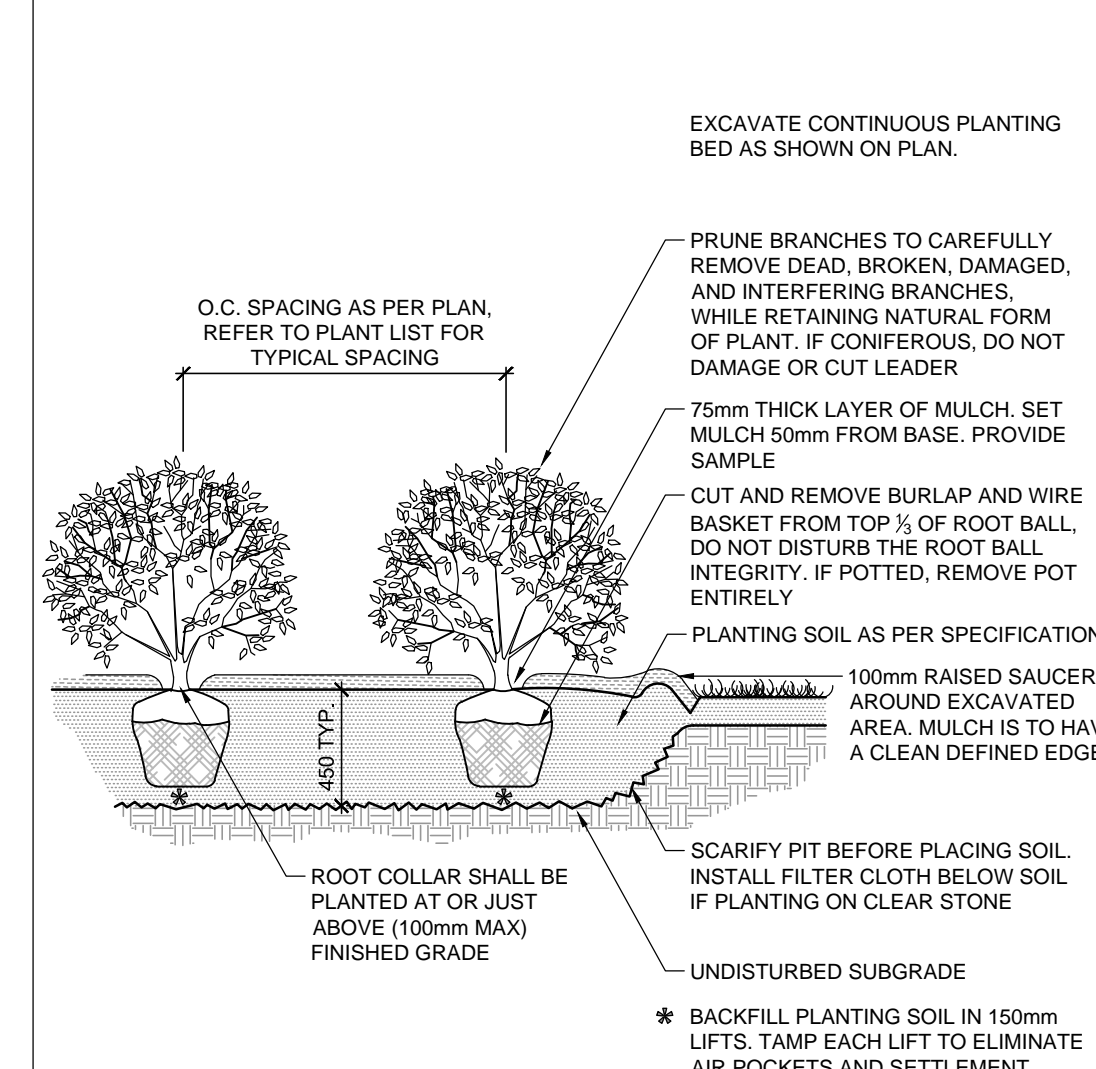
GEOTECHNICAL NOTES

- This planting plan has been developed in accordance with the Geotechnical Investigation FERNBANK CROSSING Residential Subdivision Block 135 Report provided to Novatech by Brett Webster and Brent Wiebe (GEMTEC Project No. 64153.74) on March 20, 2019. Additional input was provided by Luc Bouchard (GEMTEC, Copied Brent Wiebe) in an email to Ryan James on June 3, 2019.
- Building construction is anticipated to be slab on grade, therefore the under side of footings (USF) is not anticipated to be a minimum of 2.1m below finished grade. As such, most trees have been specified with a mature height that is equivalent to the distance between the tree and the structure. Exceptions have been made at the end of Buildings 3, 4 and 5, per discussions with GEMTEC.
- All new trees proposed on the property meet with soil volume requirements. See Figure FIG-VOL which demonstrates the scenario with the least amount of soil volume available to proposed trees.



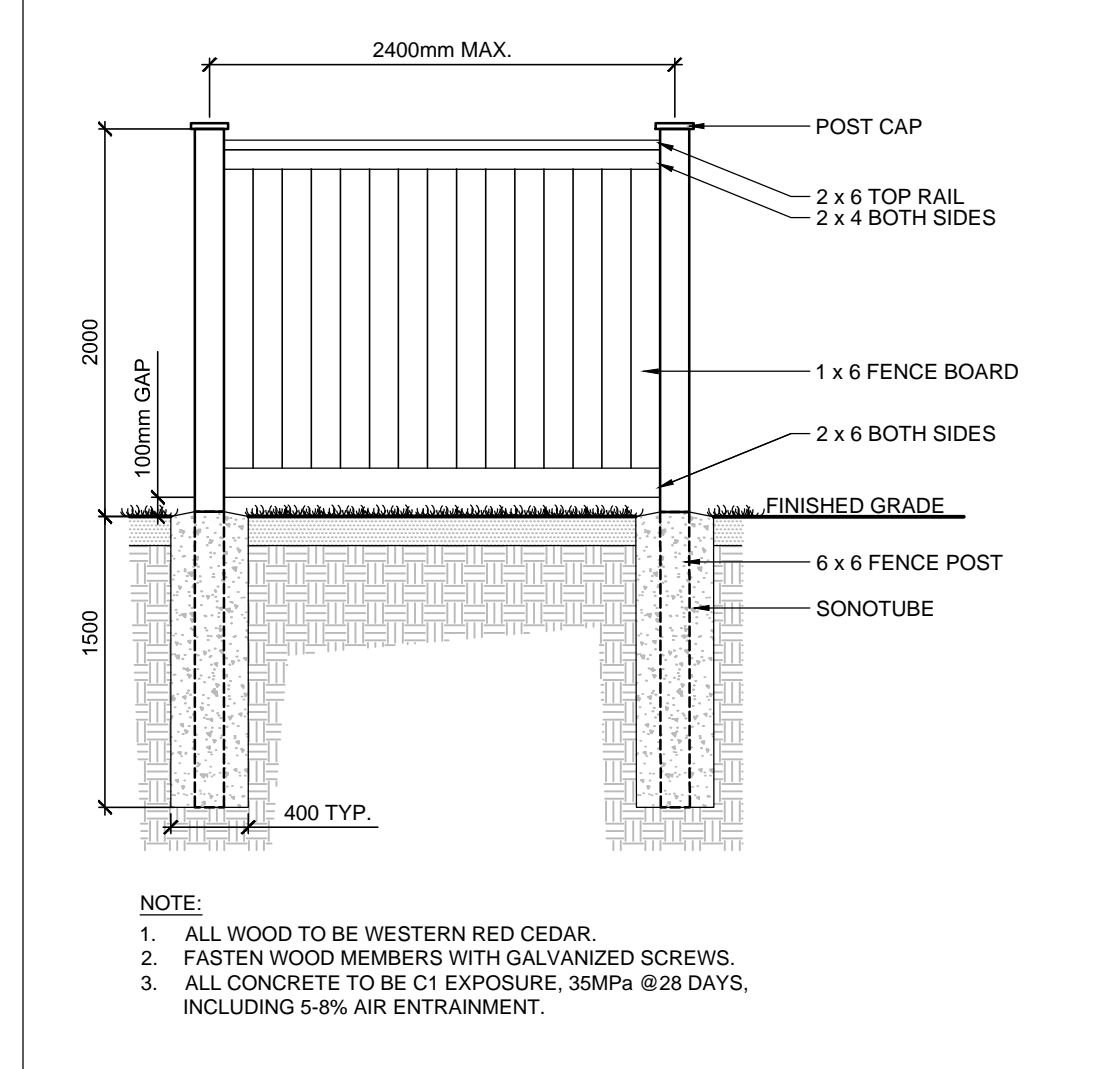
STANDARD DECIDUOUS TREE PLANTING

D1



SHRUB AND PERENNIAL PLANTING

D2




STANDARD WOOD PRIVACY FENCE

D3

NOTE:
THE POSITION OF ALL POLE LINES, CONDUITS,
WATERMANS, SEWERS AND OTHER
UNDERGROUND AND OVERGROUND UTILITIES AND
STRUCTURES IS NOT NECESSARILY SHOWN ON
THE CONTRACT DRAWINGS, AND WHERE SHOWN,
THE ACCURACY OF THE POSITION OF SUCH
UTILITIES AND STRUCTURES IS NOT GUARANTEED.
BEFORE STARTING WORK, DETERMINE THE EXACT
LOCATION OF ALL SUCH UTILITIES AND
STRUCTURES AND ASSUME ALL LIABILITY FOR
DAMAGE TO THEM.

| No. | REVISION | DATE | BY |
|-----|---------------------------------|-----------|-----|
| 5. | ISSUED FOR SITE PLAN APPROVAL | SEP 17/19 | RGJ |
| 4. | ISSUED FOR SITE PLAN APPROVAL | SEP 13/19 | RGJ |
| 3. | AS PER CITY COMMENTS | AUG 22/19 | RGJ |
| 2. | AS PER CITY COMMENTS | JUN 12/19 | RGJ |
| 1. | ISSUED FOR SITE PLAN SUBMISSION | MAR 22/19 | SC |

| SCALE | DESIGN |
|------------|--------|
| 1:300 | KEW |
| 1:300 | SC |
| 0 3 6 9 12 | KEW |
| | SC |
| | RGJ |

| DESIGN | | FOR REVIEW ONLY | |
|----------|-----|-----------------|---|
| CHECKED | KEW | |  |
| | SC | | |
| DRAWN | | | |
| KEW | | | |
| CHECKED | | | |
| | SC | | |
| APPROVED | | | |
| | RGJ | | |



| | |
|--|-----------------------|
| CITY OF OTTAWA FERNBANK CROSSING - 360 HALIBURTON HEIGHTS | PROJECT NO. 117089 |
| LANDSCAPE PLAN | REV # 5 117089-L |