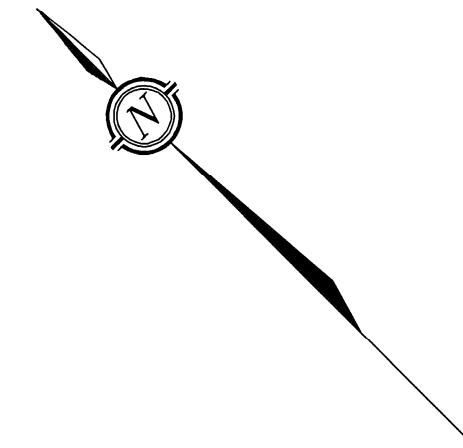


METRIC
DISTANCES AND ELEVATIONS SHOWN ON THIS PLAN ARE IN METRES
AND CAN BE CONVERTED TO FEET BY DIVIDING BY 0.3048



TREE SCHEDULE		
POINT No.	CANOPY (Radius)	BASE (Diameter)
1	2.5	0.25
2	3.5	0.40
3	3.5	0.40
4	3.5	0.40
5	4.0	0.40
6	3.0	0.25
7	3.0	0.25
8	3.0	0.45

**TOPOGRAPHIC SURVEY OF
PART OF LOT 5,
CONCESSION 4
GEOGRAPHIC TOWNSHIP OF MARCH
CITY OF OTTAWA**

SCALE 1 : 300
0 5 10 20 30 metres
FAIRHALL, MOFFATT & WOODLAND LIMITED
ONTARIO LAND SURVEYORS

ELEVATION NOTES

- ELEVATIONS SHOWN HEREON ARE REFERRED TO GEODETIC DATUM.
- IT IS THE RESPONSIBILITY OF THE USER OF THIS INFORMATION TO VERIFY THAT THE JOB BENCHMARK HAS NOT BEEN ALTERED OR DISTURBED AND THAT ITS RELATIVE ELEVATION AND DESCRIPTION AGREE WITH THE INFORMATION SHOWN ON THIS DRAWING.

UTILITY NOTES

- THIS DRAWING CANNOT BE ACCEPTED AS ACKNOWLEDGING ANY UNDERGROUND UTILITIES AND IT WILL BE THE RESPONSIBILITY OF THE USER TO CONTACT THE RESPECTIVE UTILITY AUTHORITIES FOR CONFIRMATION OR LOCATION.
- BEFORE ANY WORK INVOLVING PROBING, EXCAVATING, ETC., A FIELD LOCATION OF UNDERGROUND PLANT BY THE PERTINENT UTILITY AUTHORITY IS MANDATORY.

NOTES

- BEARINGS HEREON ARE GRID BEARINGS AND ARE DERIVED FROM NCC HORIZONTAL CONTROL MONUMENTS 019680013 (N 5022896.543, E 352904.084) AND 01970014 (N 5022197.969, E 352075.573) AND ARE REFERRED TO THE CENTRAL MERIDIAN 76° 30' W LONGITUDE, ZONE 9 OF THE 3' MTM ONTARIO COORDINATE SYSTEM (NAD 83).

SURVEYOR'S CERTIFICATE

- I CERTIFY THAT:
- THIS SURVEY AND PLAN ARE CORRECT AND IN ACCORDANCE WITH THE SURVEYS ACT, THE SURVEYORS ACT, THE LAND TITLES ACT AND THE REGULATIONS MADE UNDER THEM.
 - THE SURVEY REPRESENTED BY THIS PLAN WAS COMPLETED ON JANUARY 4, 2011.
 - PLAN UPDATED JUNE 18TH, 2019.

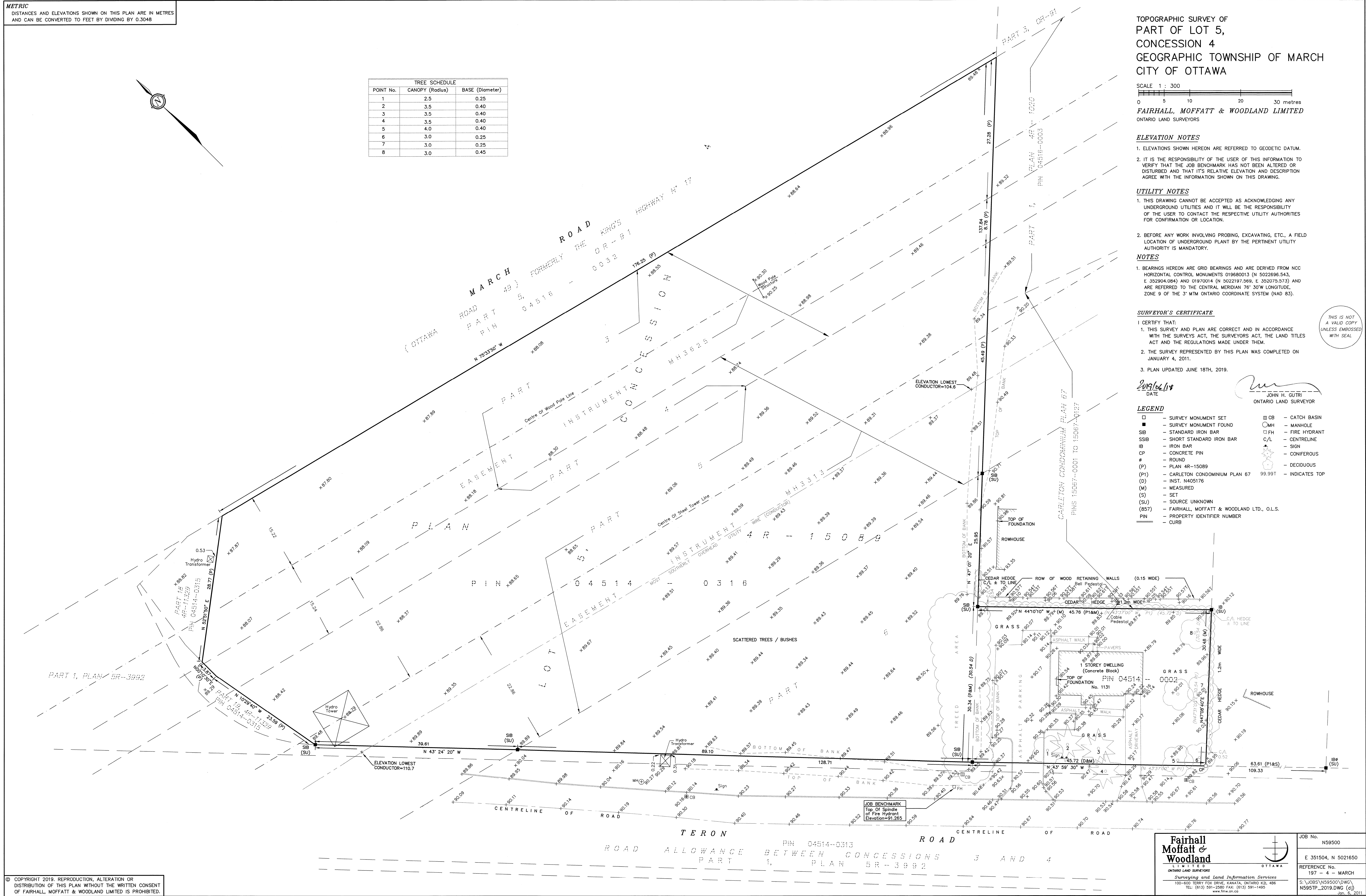
2019/06/18
DATE

John H. Gutri
JOHN H. GUTRI
ONTARIO LAND SURVEYOR

LEGEND

- | | | | | |
|-------|---|-----|-----------------|----------------|
| □ | - SURVEY MONUMENT SET | ▣ | CB | - CATCH BASIN |
| ■ | - SURVEY MONUMENT FOUND | ○ | MH | - MANHOLE |
| SIB | - STANDARD IRON BAR | ⊕ | FH | - FIRE HYDRANT |
| SSIB | - SHORT STANDARD IRON BAR | C/L | - CENTRELINE | |
| IB | - IRON BAR | + | - SIGN | |
| CP | - CONCRETE PIN | ⊙ | - CONFEROUS | |
| ● | - ROUND | ⊙ | - DECIDUOUS | |
| (P) | - PLAN 4R-15089 | ⊙ | - INDICATES TOP | |
| (P1) | - CARLETON CONDOMINIUM PLAN 67 | | | |
| (D) | - INST. N405176 | | | |
| (M) | - MEASURED | | | |
| (S) | - SET | | | |
| (SU) | - SOURCE UNKNOWN | | | |
| (857) | - FAIRHALL, MOFFATT & WOODLAND LTD., O.L.S. | | | |
| PIN | - PROPERTY IDENTIFIER NUMBER | | | |
| - | - CURB | | | |

THIS IS NOT
A VALID COPY
UNLESS EMBOSSED
WITH SEAL



© COPYRIGHT 2019. REPRODUCTION, ALTERATION OR DISTRIBUTION OF THIS PLAN WITHOUT THE WRITTEN CONSENT OF FAIRHALL, MOFFATT & WOODLAND LIMITED IS PROHIBITED.

Fairhall Moffatt & Woodland ONTARIO LAND SURVEYORS Surveying and Land Information Services 100-600 TERRY FOX DRIVE, KANATA, ONTARIO K2L 4B6 TEL: (613) 591-2380 FAX: (613) 591-1495 www.fmw.on.ca	JOB No. N59500
	E 351504, N 5021650
	REFERENCE No. 197 - 4 - MARCH
	S:\JOBS\N59500\DWG\N5951P_2019.DWG (4) 30.6.2019