

METRIC
DISTANCES AND ELEVATIONS SHOWN ON THIS PLAN ARE IN METRES
AND CAN BE CONVERTED TO FEET BY DIVIDING BY 0.3048

**TOPOGRAPHIC SURVEY OF
PART OF LOT 14
REGISTERED PLAN 99
CITY OF OTTAWA**

SCALE 1 : 100
0 1 2 3 4 5 10 metres

FAIRHALL, MOFFATT & WOODLAND LIMITED
ONTARIO LAND SURVEYORS

- NOTES**
- BEARINGS ARE ASTRONOMIC AND ARE REFERRED TO THE NORTHERLY LIMIT OF GRANT STREET, AS SHOWN ON PLAN SR-8927, HAVING A BEARING OF N 66°17'20" E.
 - SURVEY PERFORMED UNDER EXTREME WINTER CONDITIONS AND MAY NOT ILLUSTRATE ALL SITE FEATURES DUE TO ICE AND SNOW COVER

- ELEVATION NOTES**
- ELEVATIONS ARE REFERRED TO GEODETIC DATUM (CGVD28).
 - ELEVATIONS FOR MANHOLE COVERS AND CATCH BASINS HAVE TO BE INDEPENDENTLY CONFIRMED BEFORE THEY CAN BE ACCEPTED FOR FINAL DESIGN OR CONSTRUCTION PURPOSES.
 - IT IS THE RESPONSIBILITY OF THE USER OF THIS INFORMATION TO VERIFY THAT THE JOB BENCHMARK HAS NOT BEEN ALTERED OR DISTURBED AND THAT ITS RELATIVE ELEVATION AND DESCRIPTION AGREE WITH THE INFORMATION SHOWN ON THIS DRAWING.
 - ELEVATIONS SHOWN ALONG FACE OF CURB ARE TOP OF ASPHALT.

- UTILITY NOTES**
- THIS DRAWING CANNOT BE ACCEPTED AS ACKNOWLEDGING ANY UNDERGROUND UTILITIES AND IT WILL BE THE RESPONSIBILITY OF THE USER TO CONTACT THE RESPECTIVE UTILITY AUTHORITIES FOR CONFIRMATION OR LOCATION.
 - UNDERGROUND UTILITIES, AS REPORTED ON THIS DRAWING, ARE NOT BASED ON AN ACTUAL 'FIELD LOCATE' BY THE RESPECTIVE UTILITY AGENCIES BUT HAVE BEEN COMPILED FROM DATA OBTAINED FROM THE FOLLOWING SOURCE:
 - a) CITY OF OTTAWA UTILITY SHEET E-07-15 (REVISION DATE JUNE 2009)
 - b) CITY OF OTTAWA ENGINEERING DRAWINGS, PLAN No. 3333, (SHEETS 2 & 3 OF 7, REVISION DATE JAN. 2003)
 - BEFORE ANY WORK INVOLVING PROBING, EXCAVATING, ETC., A FIELD LOCATION OF UNDERGROUND PLANT BY THE PERTINENT UTILITY AUTHORITY IS MANDATORY.

LEGEND

□	- SURVEY MONUMENT SET	—W—	- WATERMAIN
■	- SURVEY MONUMENT FOUND	—G—	- GASMAIN
SSIB	- SHORT STANDARD IRON BAR	—ST—	- STORM SEWER
IB	- IRON BAR	—S—	- SANITARY SEWER
CP	- CONCRETE PIN		
(P)	- PLAN SR-8927		
(P1)	- PLAN SR-10306		
(P3)	- PLAN SR-21258		
(1236)	- P. A. RIDDELL, O.L.S.		
(1287)	- FARLEY, SMITH & MURRAY SURVEYING LTD., O.L.S.		
(JBD)	- J. D. BARNES, O.L.S.		
(SU)	- SOURCE UNKNOWN		
(WT)	- WITNESS		
(M)	- MEASURED		
(S)	- SET		
PIN	- PROPERTY IDENTIFIER NUMBER		
DIA.	- DIAMETER		
TW	- TOP OF WALL		
○ MH	- MANHOLE		
○ FH	- FIRE HYDRANT		
⊕ UP	- UTILITY POLE		
▣ CB	- CATCH BASIN		
◀ WV	- WATER VALVE		

SURVEYOR'S CERTIFICATE

I CERTIFY THAT:

- THIS SURVEY AND PLAN ARE CORRECT AND IN ACCORDANCE WITH THE SURVEYS ACT, THE SURVEYORS ACT, THE LAND TITLES ACT AND THE REGULATIONS MADE UNDER THEM.
- THE SURVEY WAS COMPLETED ON APRIL 29, 2019.

[Signature]
DATE: *Apr 29/19*
D. S. McMORRAN
ONTARIO LAND SURVEYOR

ASSOCIATION OF ONTARIO
LAND SURVEYORS
PLAN SUBMISSION FORM
2086861

THIS PLAN IS NOT VALID
UNLESS IT IS AN EMBOSSED
ORIGINAL COPY
ISSUED BY THE SURVEYOR
In accordance with
Regulation 1028, Section 29 (3).

**Fairhall
Moffatt &
Woodland**
LIMITED
ONTARIO LAND SURVEYORS
O T T A W A

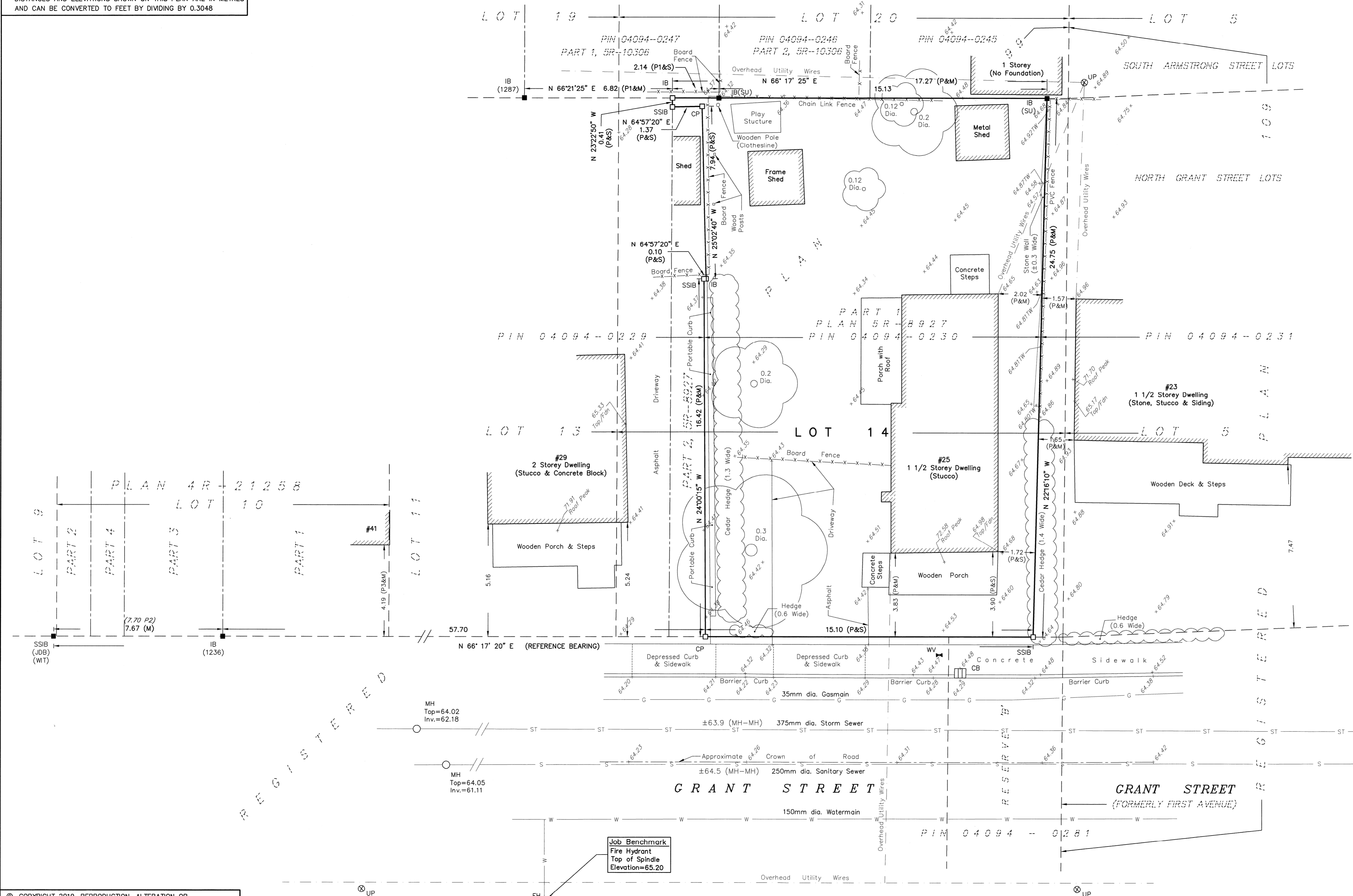
Surveying and Land Information Services
100-600 TERRY FOX DRIVE, KANATA, ONTARIO K2L 4B6
TEL: (613) 591-2580 FAX: (613) 591-1495
www.fmw.on.ca

JOB No.
2 1 3 3 0 0

E365200
N5029400

REFERENCE No.
7 - 99

S:\085\13313300\DWG\
tp133z.dwg (brd)



© COPYRIGHT 2019. REPRODUCTION, ALTERATION OR DISTRIBUTION OF THIS PLAN WITHOUT THE WRITTEN CONSENT OF FAIRHALL, MOFFATT & WOODLAND LIMITED IS PROHIBITED.