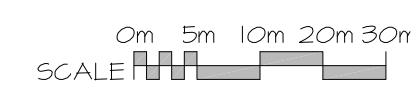


**LOCATION PLAN**

**SITE INFORMATION**

LEGAL DESCRIPTION: PART OF LOT 11 CONCESSION 2 GEOGRAPHIC TOWNSHIP OF HUNTLEY CITY OF OTTAWA R15(19) AND RC(120)

ZONING	Required (R15)	Provided
LOT AREA (min.)	10,000 sq. m.	48,142.7 sq. m.
LOT WIDTH (min.)	75 m.	1,069.1 m.
SETBACKS		
REAR	10.0 m	201.9 m
CORNER SIDE YD	4.0 m	367.6 m
FRONT YARD	4.0 m	490.9 m (RC4)
MAX. BLDG. HT.	12.0 m	4.3 m
LOT COVERAGE	30% Max	0.2%
LANDSCAPE AREA	20% Min	96.0%
GROSS FLOOR AREA (PER ZONING BYLAW)		
BASEMENT	4133 sq. m.	
GROUND FLOOR	66086 sq. m.	
TOTAL	70219 sq. m.	
PARKING REQUIRED	1 space/100 sq. m. of GFA	
TOTAL (T X 102/100)	49 SPACES	
PARKING PROVIDED	84 SPACES	
LOADING SPACES REQUIRED		
0 - Phase One (Less than 1000 sq. m.)		
1 - Phase Two (1000-1999 sq. m.)		
LOADING SPACES PROVIDED		
1 - (To serve Phase One and Phase Two)		
BICYCLE SPACES REQUIRED		
1/500 sq. m. GFA	0 SPACES	
(Site is outside Village of Carp)		
DEVELOPMENT AREA		
BUILDING FOOTPRINT	1/2140 sq. m.	
PARKING FOOTPRINT	314335 sq. m.	
TOTAL	421275 sq. m.	



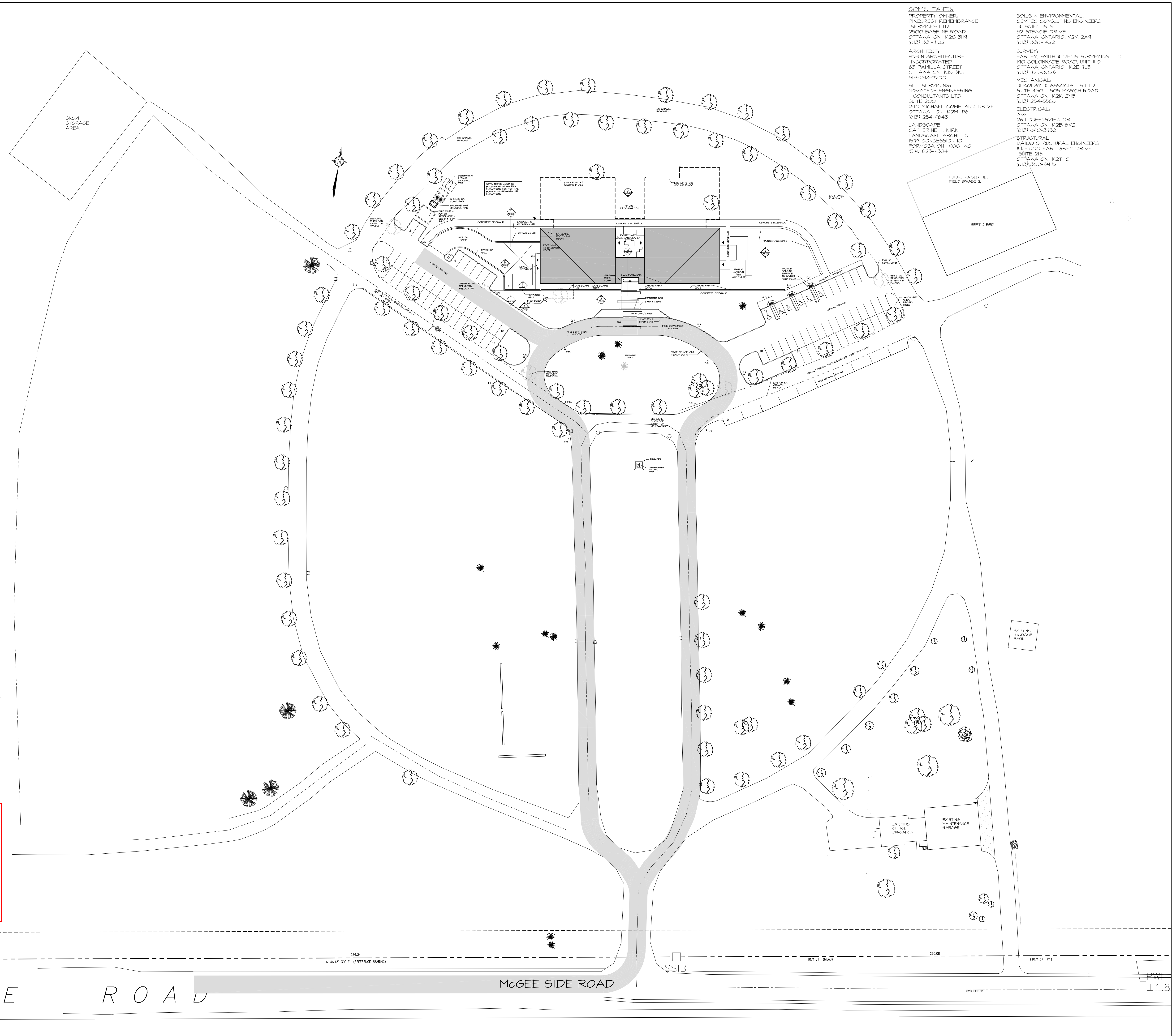
LEGAL SURVEY INFORMATION TAKEN FROM:  
**PLAN OF SURVEY OF PART OF LOT 11 CONCESSION 2 GEOGRAPHIC TOWNSHIP OF HUNTLEY CITY OF OTTAWA FARLEY, SMITH & DENIS SURVEYING LTD. 2018**

TOPOLOGICAL SURVEY INFORMATION TAKEN FROM:  
**GRADING AND SERVICING PLAN 2037 McGEE SIDE ROAD, CITY OF OTTAWA PINECREST REMEMBRANCE SERVICES HIGHLAND PARK REMEMBRANCE**

**NOVATECH ENGINEERING**

**APPROVED**  
 By Krishon Walker at 12:21 pm, Dec 29, 2019

**KRISHON WALKER**  
 PLANNER  
 PLANNING, INFRASTRUCTURE & ECONOMIC DEVELOPMENT DEPARTMENT, CITY OF OTTAWA



**CONSULTANTS:**  
 PROPERTY OWNER:  
 PINECREST REMEMBRANCE SERVICES LTD.  
 2500 BASELINE ROAD  
 OTTAWA, ON K2C 3H1  
 (613) 831-1122

**ARCHITECT:**  
 HOBIN ARCHITECTURE INCORPORATED  
 63 PAMILIA STREET  
 OTTAWA ON K1S 3K7  
 (613) 238-7200

**SITE SERVICING:**  
 NOVATECH ENGINEERING CONSULTANTS LTD.  
 SUITE 200  
 240 MICHAEL COKPLAND DRIVE  
 OTTAWA, ON K2M 1P6  
 (613) 294-9643

**LANDSCAPE:**  
 CATHERINE H. KIRK LANDSCAPE ARCHITECT  
 1374 CONCESSION 10  
 FORMOSA ON K0G 1K0  
 (519) 623-1524

**SOILS & ENVIRONMENTAL:**  
 GEMTEC CONSULTING ENGINEERS & SCIENTISTS  
 32 STEADIE DRIVE  
 OTTAWA, ONTARIO, K2K 2A9  
 (613) 836-1422

**SURVEY:**  
 FARLEY, SMITH & DENIS SURVEYING LTD  
 190 COLONNADE ROAD, UNIT #10  
 OTTAWA, ONTARIO K2E 1J5  
 (613) 121-8226

**MECHANICAL:**  
 BERGLAY & ASSOCIATES LTD.  
 SUITE 460 - 505 MARCH ROAD  
 OTTAWA ON K2K 2M5  
 (613) 254-5566

**ELECTRICAL:**  
 REP  
 2611 QUEENSWAY DR.  
 OTTAWA ON K2B 8K2  
 (613) 640-3752

**STRUCTURAL:**  
 DAIDO STRUCTURAL ENGINEERS  
 SUITE 215  
 300 EARL GREY DRIVE  
 OTTAWA ON K2T 1C1  
 (613) 302-8412



no.	date	revision
6	NOV. 20/19	RE-ISSUED - SITE PLAN CTRL
5	AUG. 29/19	RE-ISSUED - SITE PLAN CTRL
4	JUN. 24/19	ISSUED FOR BUDGETING
3	JUNE 17/19	ISSUED - SITE PLAN CONTROL
2	MAY 1/19	ISSUED FOR INFORMATION
1	AUG. 31/18	ISSUED FOR COSTING

It is the responsibility of the appropriate contractor to check and verify all dimensions on site and report all errors and/or omissions to the architect.

All contractors must comply with all pertinent codes and by-laws.

Do not scale drawings.

This drawing may not be used for construction until signed.

Copyright reserved.



**Hobin Architecture Incorporated**  
 63 Pamilia Street  
 Ottawa, Ontario  
 Canada K1S 3K7  
 T: 613-238-7200  
 F: 613-238-2005  
 E: mail@hobinarc.com  
 hobinarc.com

**PROJECT/LOCATION:**  
 HIGHLAND PARK REMEMBRANCE  
 2037 McGEE SIDE RD

**DRAWING TITLE:**  
 SITE CONTEXT PLAN

<b>DRAWN BY:</b> BB	<b>DATE:</b> 17/12/207	<b>SCALE:</b> 1:600
<b>PROJECT:</b> 1513		<b>DRAWING NO.:</b> A1.01
<b>REVISION NO.:</b>		

FILE No. D07-12-19-0112