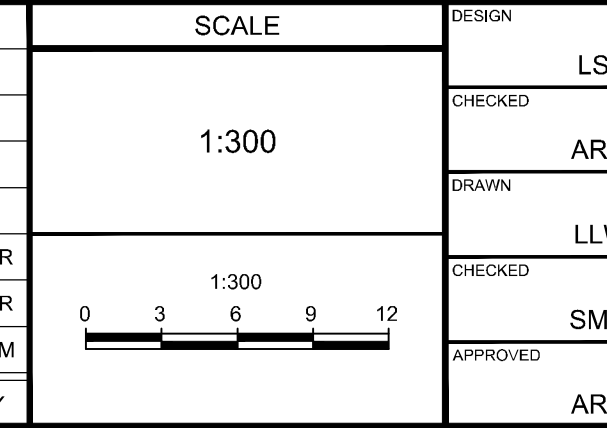


CONSULTANTS	
PROPERTY OWNER: PINCREST REMEMBRANCE SERVICES LTD. 2500 BASELINE ROAD OTTAWA, ON K2C 3H9 613-831-7122	SOILS & ENVIRONMENTAL: GEMTEC CONSULTING ENGINEERING & SCIENTISTS 32 STEACHE DRIVE OTTAWA, ON K2K 2A9 613-836-1422
ARCHITECT: HOBIN ARCHITECTURE INCORPORATED 83 PAMILLA STREET OTTAWA, ON K1S 3K7 613-238-7200	SURVEY: FARLEY, SMITH & DENIS SURVEYING LTD. 190 COLONNADE ROAD, UNIT #10 OTTAWA, ON K2E 7J5 613-727-8228
SITE SERVICES: NOVATECH ENGINEERING CONSULTANTS LTD. SUITE 200 240 MICHAEL COWPLAND DRIVE OTTAWA, ON K2M 1P6 613-254-9543	MECHANICAL: BEKOLAY & ASSOCIATES LTD. SUITE 400 - 505 MARCH ROAD OTTAWA, ON K2K 2M5 613-254-5566
LANDSCAPE: CATHERINE H. KIRK LANDSCAPE ARCHITECT 1378 CONGRESSION 10 FORMOSA, ON K0G 1W0 519-623-8324	ELECTRICAL: WSP 2611 QUEENSVIEW DR. OTTAWA, ON K2K 8K2 613-690-3752
	STRUCTURAL: DARDO STRUCTURAL ENGINEERS #11 - 300 EARL GREY DRIVE SUITE 213 OTTAWA, ON K2T 1C1 613-302-8872

NOTE:
 THE POSITION OF ALL POLE LINES, CONDUITS, WATERMANS, SEWERS AND OTHER UNDERGROUND AND OVERGROUND UTILITIES AND STRUCTURES IS NOT NECESSARILY SHOWN ON THE CONTRACT DRAWINGS, AND WHERE SHOWN, THE ACCURACY OF THE POSITION OF SUCH UTILITIES AND STRUCTURES IS NOT GUARANTEED. BEFORE STARTING WORK, DETERMINE THE EXACT LOCATION OF ALL SUCH UTILITIES AND STRUCTURES AND ASSUME ALL LIABILITY FOR DAMAGE TO THEM.

No.	REVISION	DATE	BY
3	REVISED PER COMMENTS	Nov 18/19	AAR
2	REVISED PER COMMENTS	AUG 28/19	AAR
1	ISSUED FOR SITE PLAN APPLICATION	JUNE 03/19	ARM



FOR REVIEW ONLY	
DESIGN	LSC
CHECKED	ARM
DRAWN	LLW
CHECKED	SMG
APPROVED	ARM



LOCATION	
2037 MCGEE SIDE ROAD, CITY OF OTTAWA HIGHLAND PARK REMEMBRANCE	
DRAWING NAME	
OUTLET PLAN AND PROFILE	
PROJECT No.	101063
REV	REV # 3
DRAWING No.	101063-PP1

D07-12-19-0112