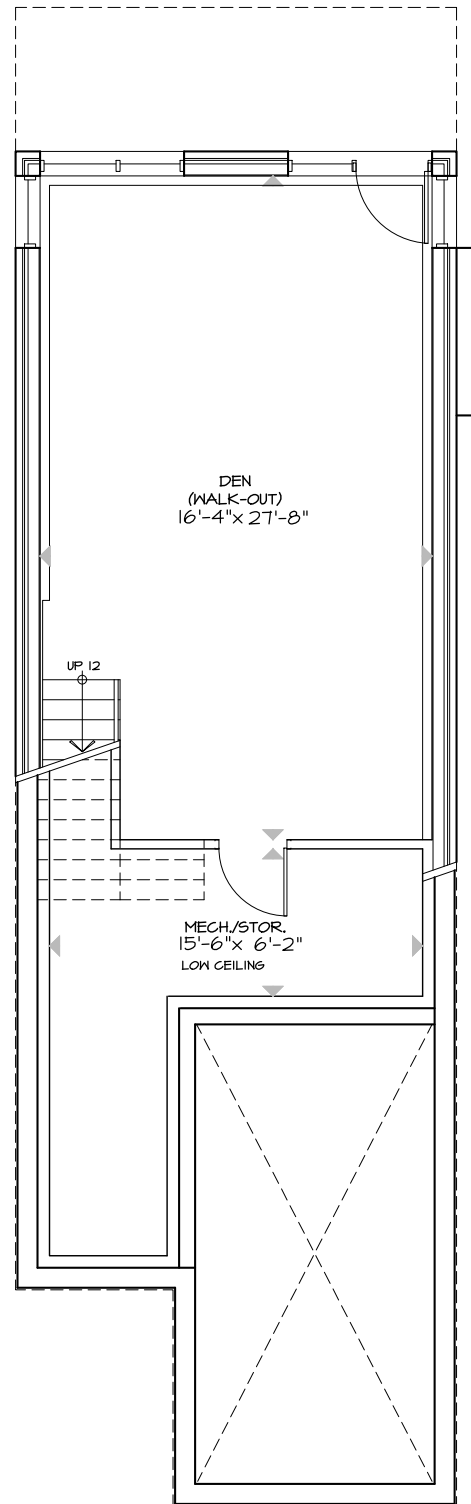
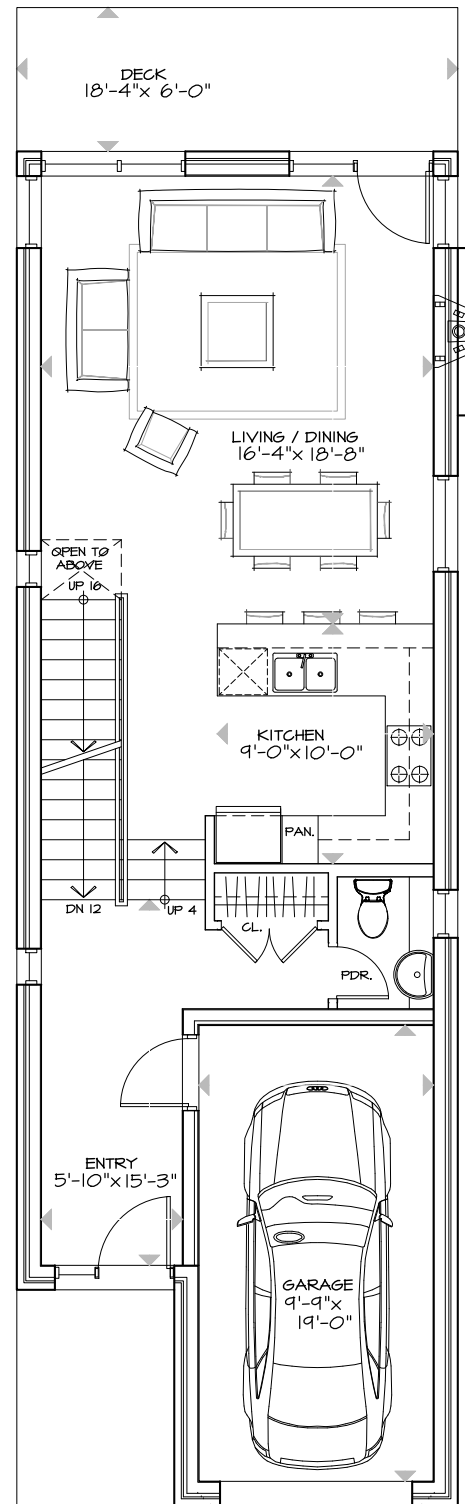


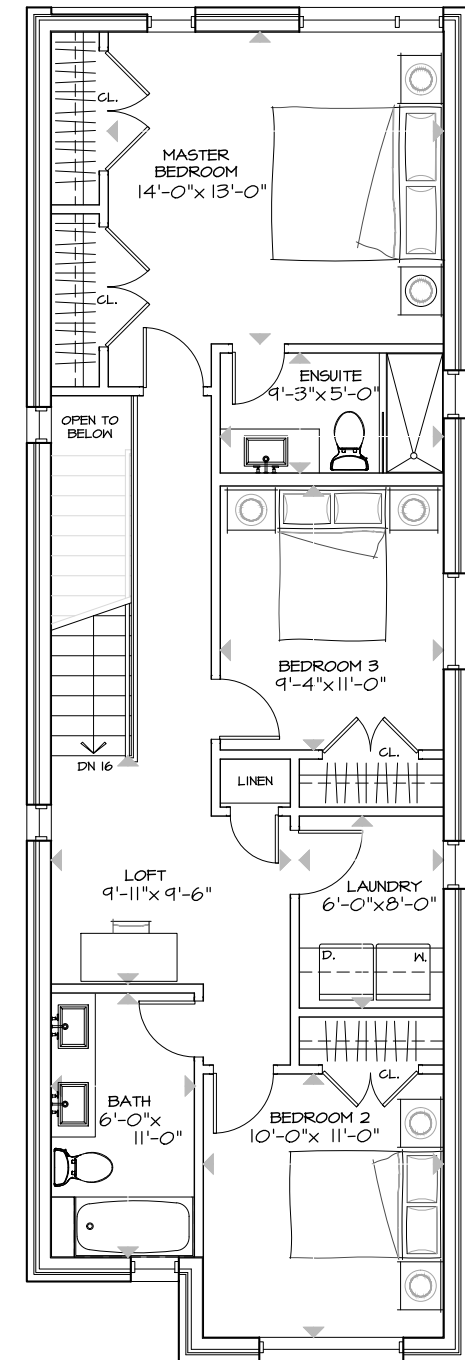
WALK-OUT BASEMENT
534 S.F.



FIRST FLOOR
752 S.F.



SECOND FLOOR
1008 S.F.



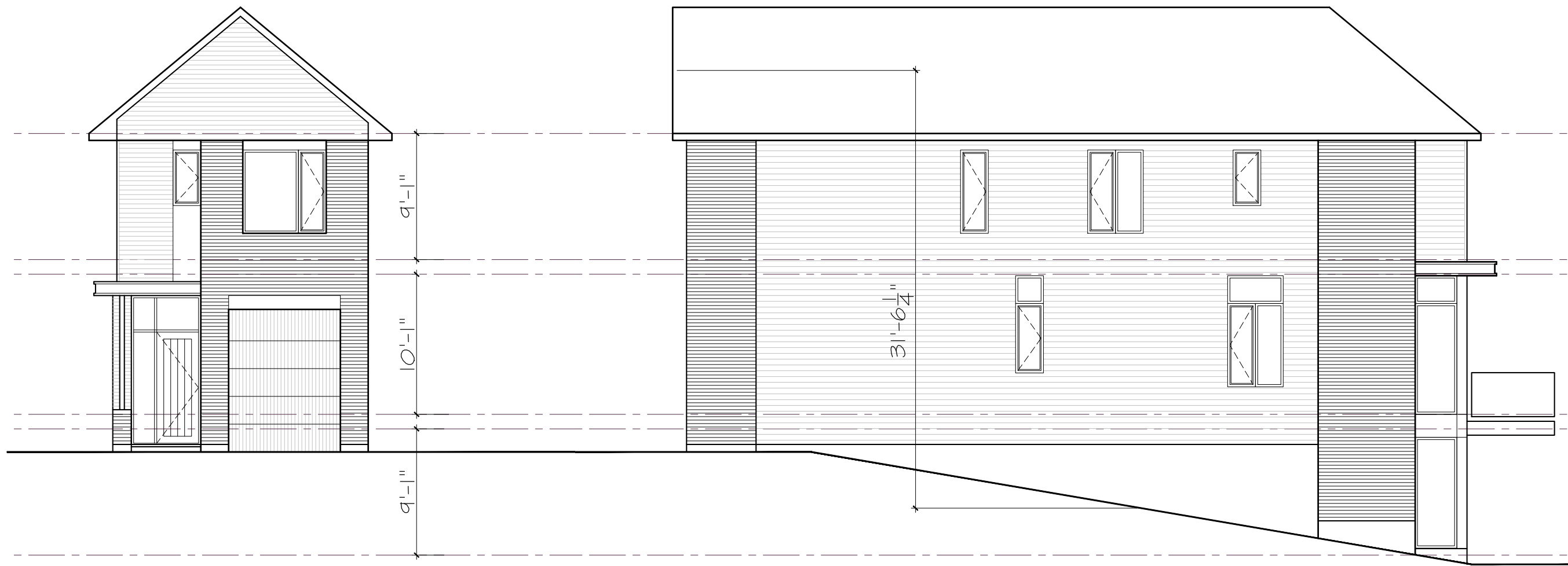
2294 S.F. TOTAL



1164-1166 HIGHCROFT DR. - UNIT 3
MANOTICK

PLANS
TOTAL 1760 S.F. (+ WALK-OUT BASEMENT)

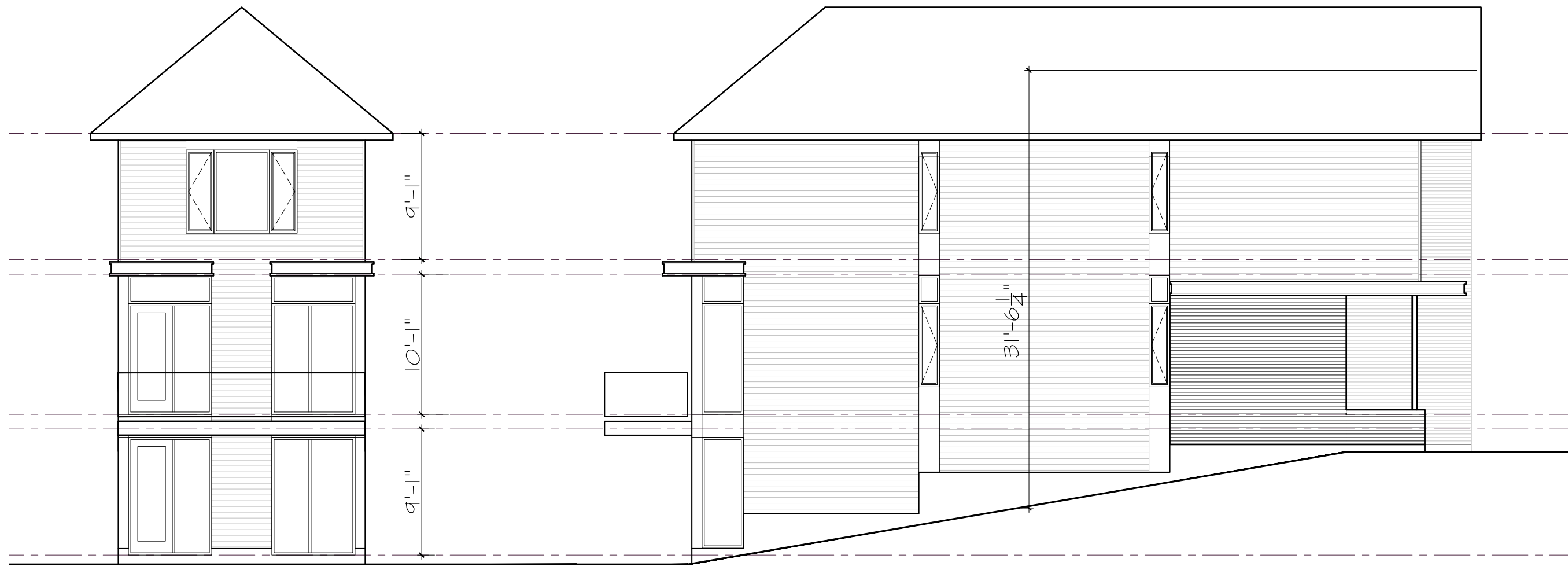
SCALE: 1/8" = 1'-0"
September 27, 2019



1164-1166 HIGHCROFT DR. - UNIT 3a
MANOTICK

FRONT & RIGHT SIDE ELEVATIONS

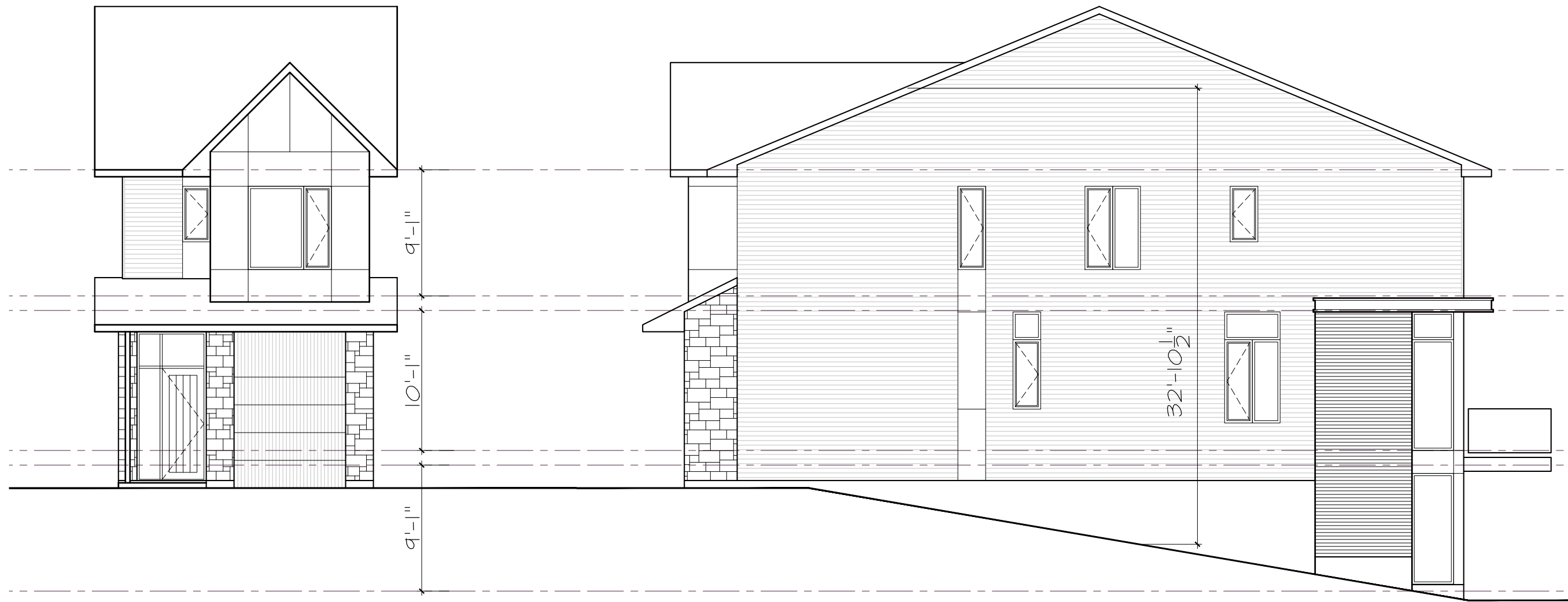
SCALE: 1/8" = 1'-0"
September 27, 2019



1164-1166 HIGHCROFT DR. - UNIT 3a
MANOTICK

REAR & LEFT SIDE ELEVATIONS

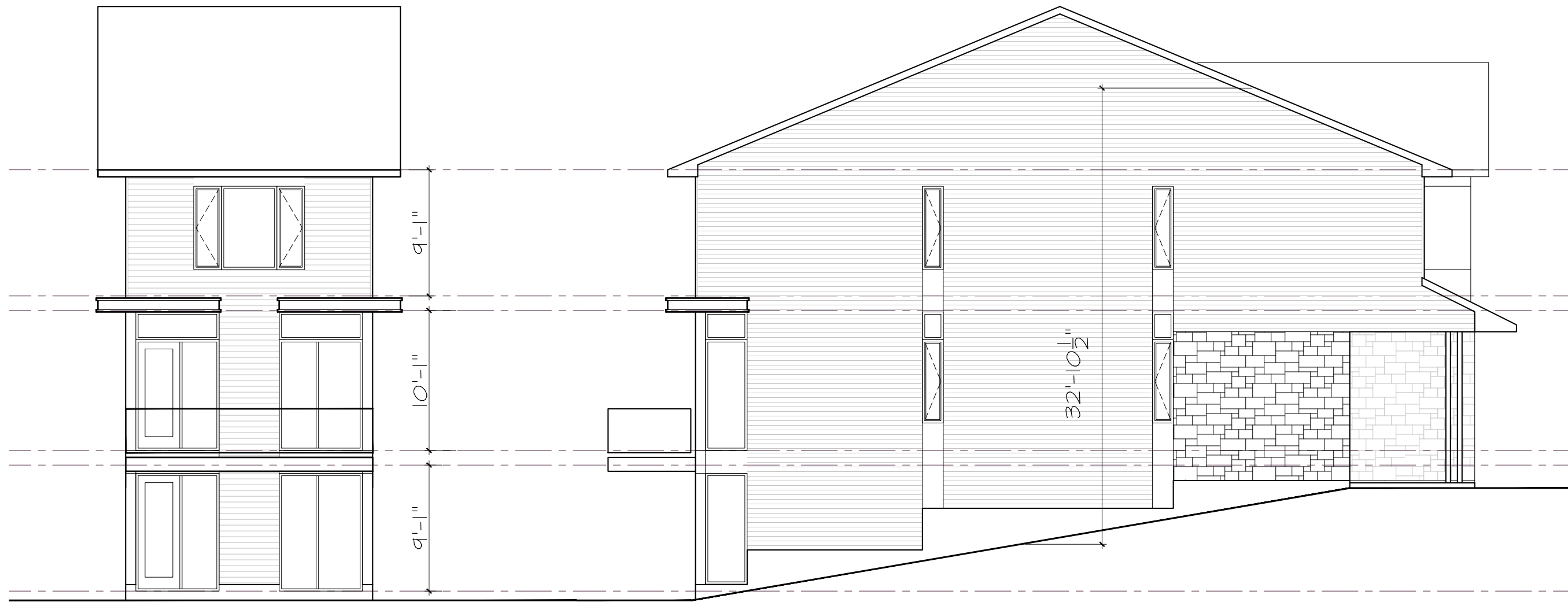
SCALE: 1/8" = 1'-0"
September 27, 2019



1164-1166 HIGHCROFT DR. - UNIT 3b
MANOTICK

FRONT & RIGHT SIDE ELEVATIONS

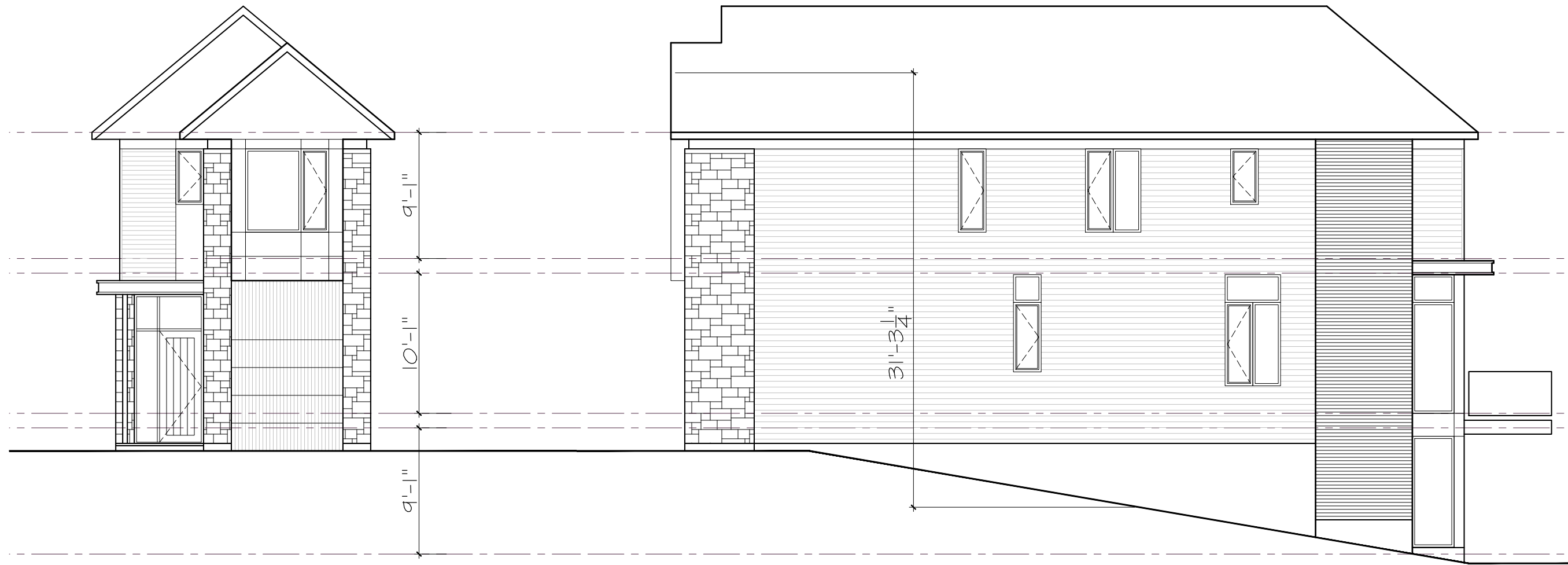
SCALE: 1/8" = 1'-0"
September 27, 2019



1164-1166 HIGHCROFT DR. - UNIT 3b
MANOTICK

REAR & LEFT SIDE ELEVATIONS

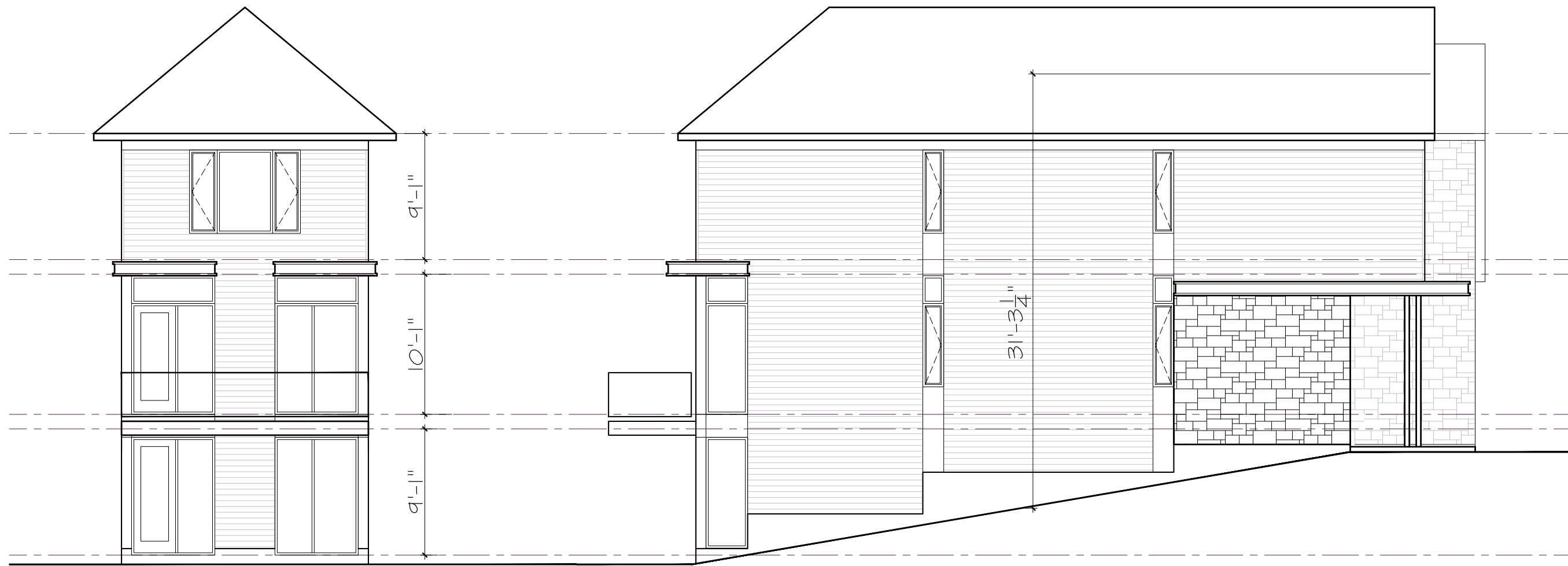
SCALE: 1/8" = 1'-0"
September 27, 2019



1164-1166 HIGHCROFT DR. - UNIT 3C
MANOTICK

FRONT & RIGHT SIDE ELEVATIONS

SCALE: 1/8" = 1'-0"
September 27, 2019



1164-1166 HIGHCROFT DR. - UNIT 3C
MANOTICK

FRONT & RIGHT SIDE ELEVATIONS

SCALE: 1/8" = 1'-0"
September 27, 2019



LOT 6
Unit Type 3

LOT 7
Unit Type 3

LOT 8
Unit Type 3



1164-1166 HIGHCROFT DR.
MANOTICK

STREETScape 3

SCALE: 1/8" = 1'-0"
September 27, 2019