

Copyright Reserved

The Contractor shall verify and be responsible for all dimensions. DO NOT scale the drawing - any errors or omissions shall be reported to Stantec without delay.
The Copyrights to all designs and drawings are the property of Stantec. Reproduction or use for any purpose other than that authorized by Stantec is forbidden.

Legend

- PROPOSED SILT FENCE BOUNDARY AS PER OPSD 219.110
- PROPOSED CATCHBASIN PROTECTION

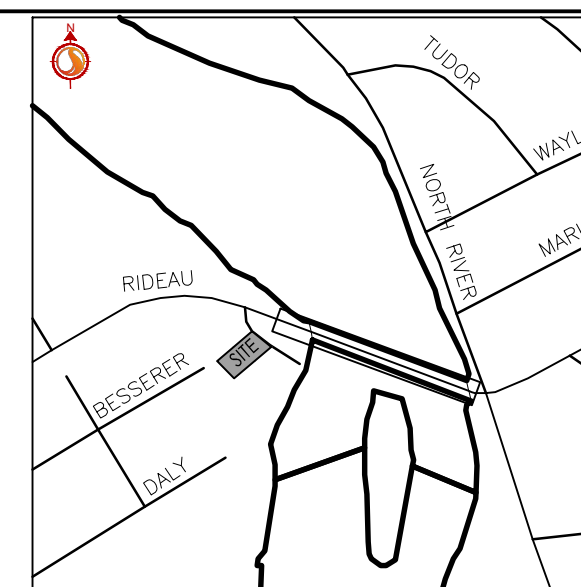
Notes

Best Management Practices

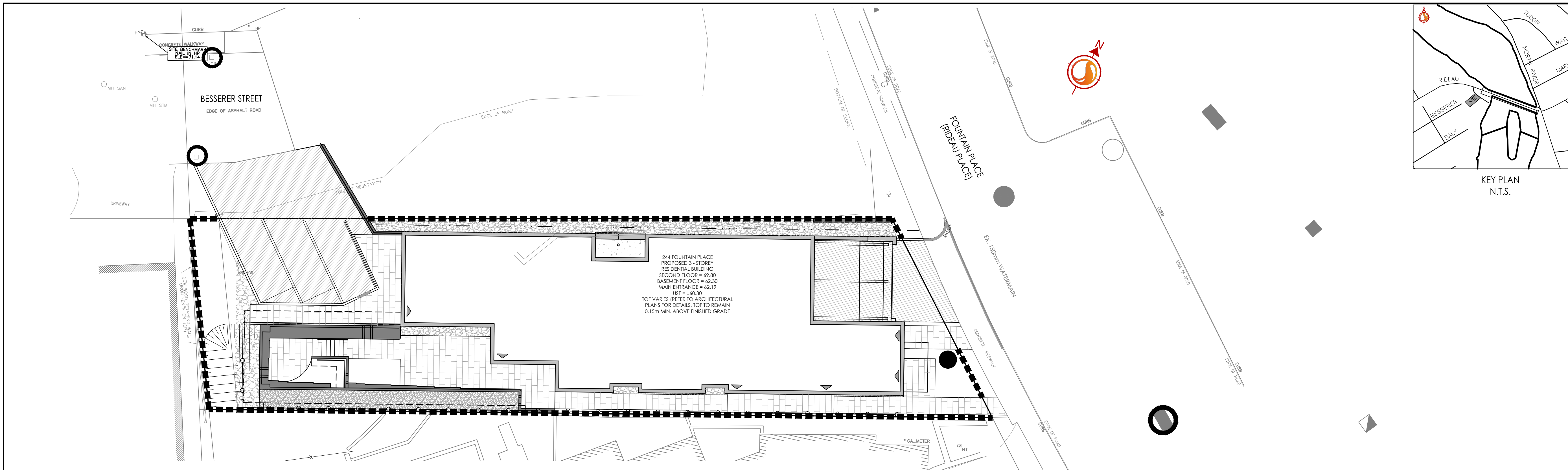
CONTRACTOR TO PROVIDE EROSION AND SEDIMENT CONTROLS (BEST MANAGEMENT PRACTICES) DURING CONSTRUCTION OF THIS PROJECT.

EROSION MUST BE MINIMIZED AND SEDIMENTS MUST BE REMOVED FROM CONSTRUCTION SITE RUN-OFF IN ORDER TO PROTECT DOWNSTREAM AREAS. DURING ALL CONSTRUCTION, EROSION AND SEDIMENTATION SHOULD BE CONTROLLED BY THE FOLLOWING TECHNIQUES:

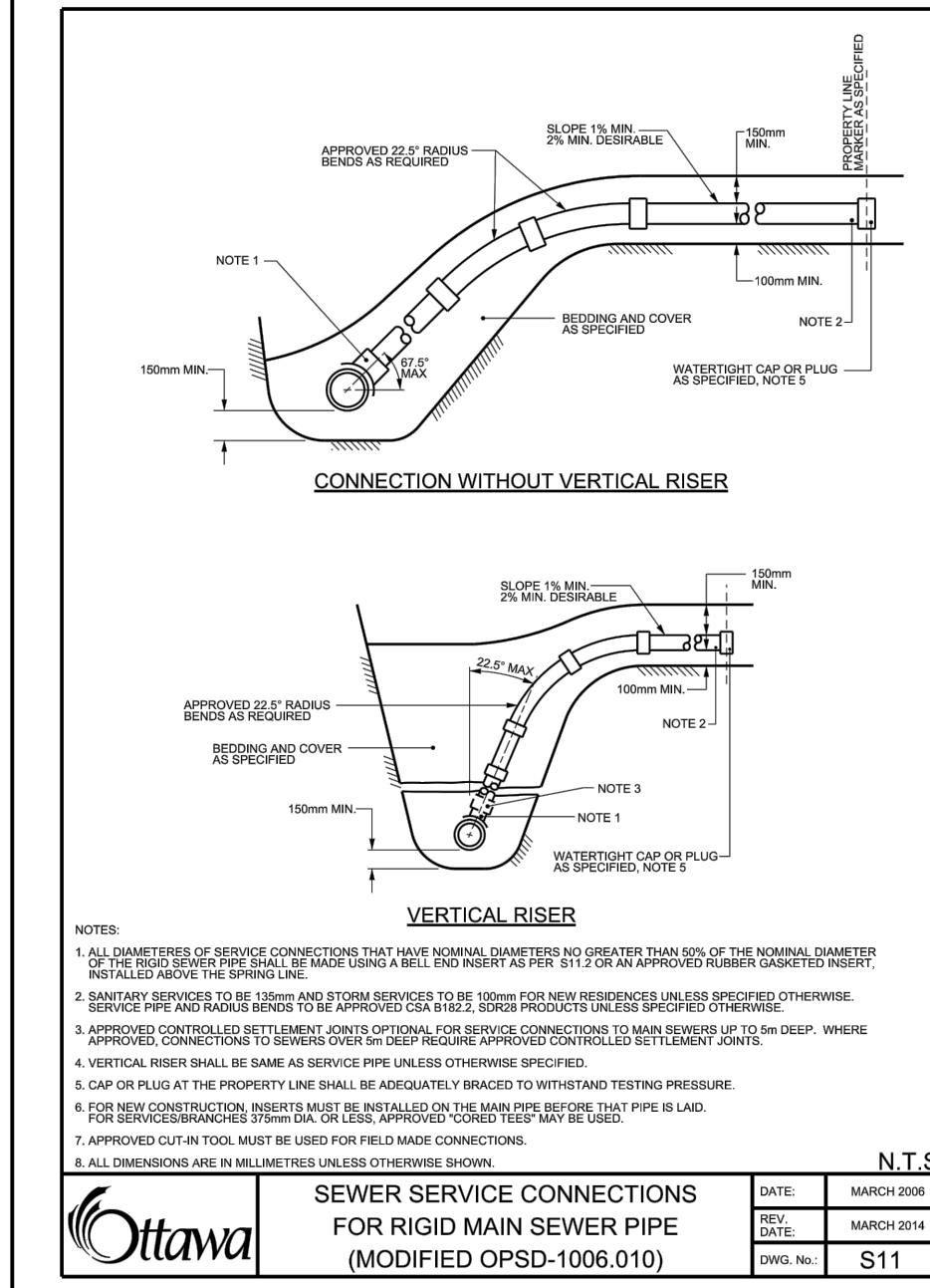
1. LIMIT THE EXTENT OF EXPOSED SOILS AT ANY GIVEN TIME.
2. REVEGETATE EXPOSED AREAS AND SLOPES AS SOON AS POSSIBLE.
3. MINIMIZE AREA TO BE CLEARED AND GRUBBED.
4. PROTECT EXPOSED SLOPES WITH PLASTIC OR SYNTHETIC MULCHES.
5. INSTALL CATCH BASIN INSERTS OR EQUIVALENT IN ALL PROPOSED CATCH BASINS AND CATCH BASIN MANHOLES AND IN ALL EXISTING CATCH BASINS THAT WILL RECEIVE RUN-OFF FROM THE SITE.
6. A SILT FENCE SHALL BE INSTALLED AROUND THE PERIMETER OF ALL AND ANY STOCKPILES OF MATERIAL TO BE USED OR REMOVED FROM SITE. (LOCATION TO BE DETERMINED)
7. A VISUAL INSPECTION SHALL BE DONE DAILY ON SEDIMENT CONTROL MEASURES AND CLEANED OF ANY ACCUMULATED SILT AS REQUIRED. THE DEPOSITS WILL BE DEPOSED OFF SITE AS PER THE REQUIREMENTS OF THE CONTRACT.
8. SEDIMENT CONTROL BARRIERS MAY ONLY BE REMOVED TEMPORARILY WITH APPROVAL OF CONTRACT ADMINISTRATOR TO ACCOMMODATE CONSTRUCTION OPERATIONS. ALL AFFECTED BARRIERS MUST BE REINSTATED AT NIGHT WHEN CONSTRUCTION IS COMPLETED. NO REMOVAL WILL OCCUR IF THERE IS A SIGNIFICANT RAINFALL EVENT ANTICIPATED (≥10mm) UNLESS A NEW DESIGN HAS BEEN INSTALLED TO PROTECT EXISTING STORM AND SANITARY SEWER SYSTEMS, OR DOWNSTREAM WATERCOURSES.
9. NO REFUELING OR CLEANING OF EQUIPMENT IS PERMITTED NEAR ANY EXISTING WATERWAY.
10. CONTRACTOR SHALL REMOVE SEDIMENT CONTROL MEASURES WHEN, IN THE OPINION OF THE CONTRACT ADMINISTRATOR, THE MEASURES IS NO LONGER REQUIRED. NO CONTROL MEASURES SHALL BE PERMANENTLY REMOVED WITHOUT PRIOR WRITTEN AUTHORIZATION FROM THE CONTRACT ADMINISTRATOR.
11. THE CONTRACTOR SHALL PERIODICALLY OR WHEN REQUESTED BY THE CONTRACT ADMINISTRATOR, CLEAN OUT ACCUMULATED SEDIMENTS AS REQUIRED.
12. THE CONTRACTOR SHALL IMMEDIATELY REPORT TO THE ENGINEER ANY ACCIDENTAL DISCHARGES OF SEDIMENT MATERIAL INTO THE WATERCOURSE. APPROPRIATE RESPONSE MEASURES, INCLUDING ANY REPAIRS TO EXISTING CONTROL MEASURES OR THE IMPLEMENTATION OF ADDITIONAL CONTROL MEASURES, SHALL BE CARRIED OUT BY THE CONTRACTOR WITHOUT DELAY.
13. STORMWATER SWALES TO BE COVERED WITH HYDRO-SEED AND MULCH.



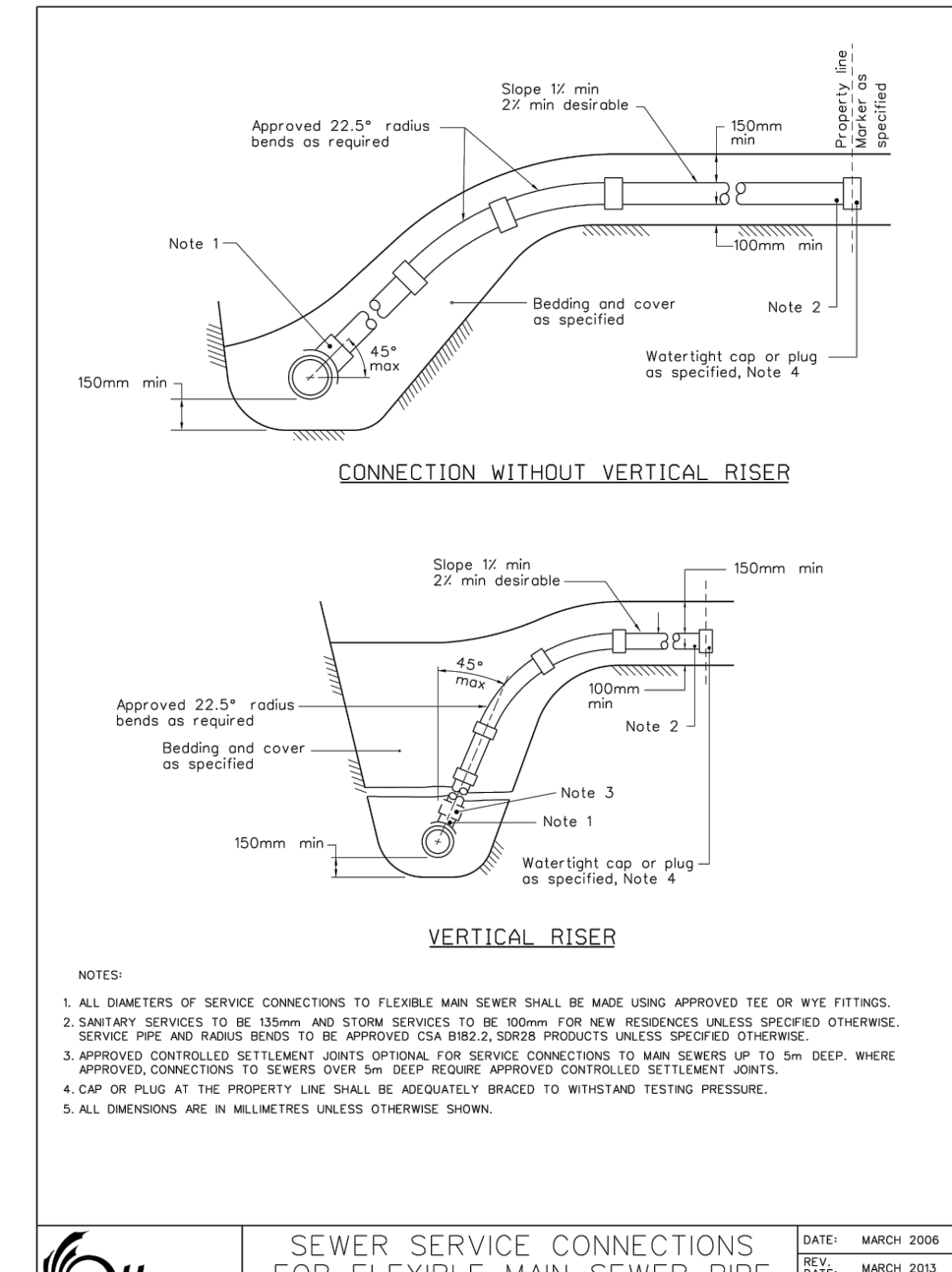
KEY PLAN
N.T.S.



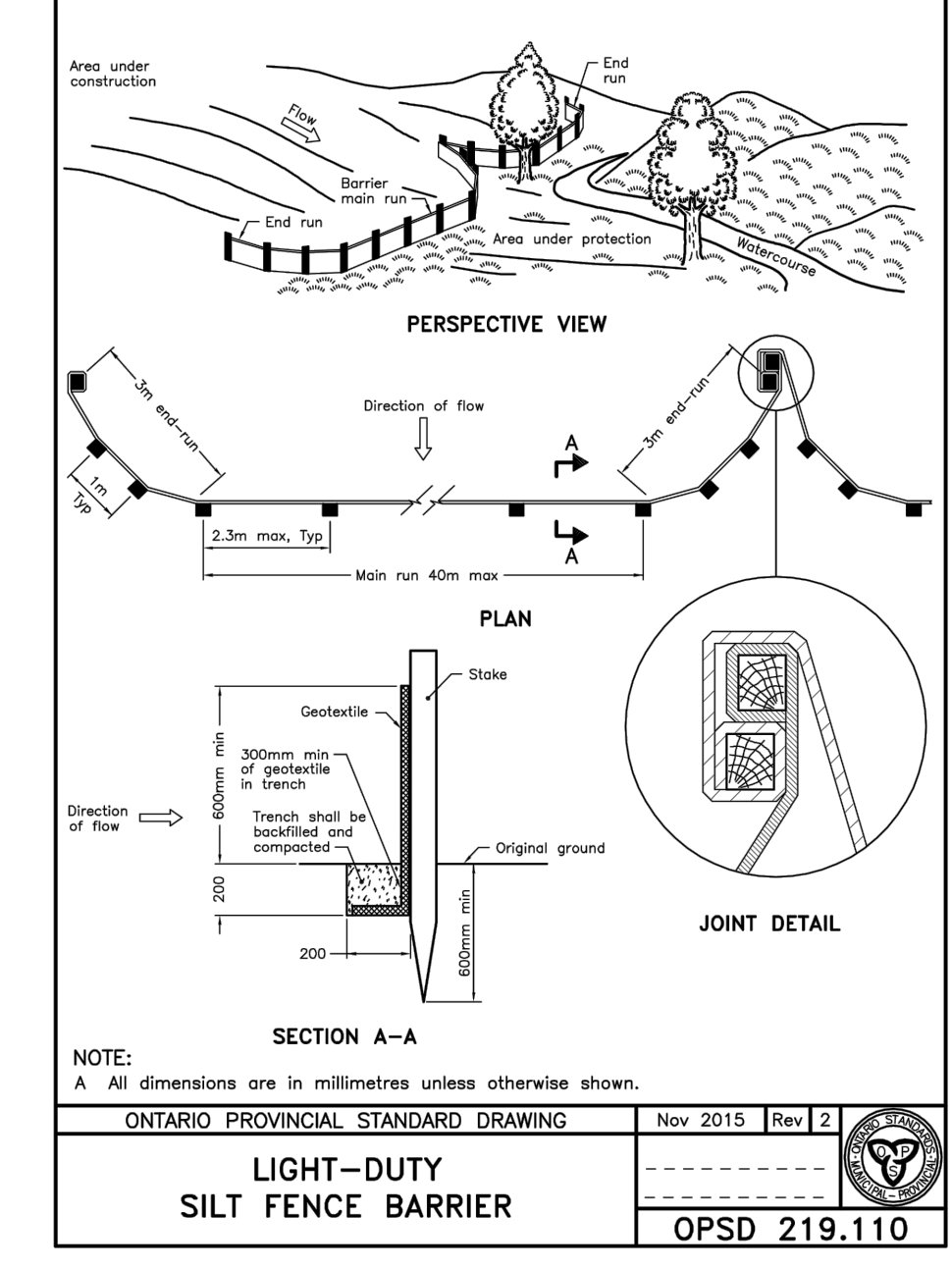
244 FOUNTAIN PLACE
PROPOSED 3-STOREY
RESIDENTIAL BUILDING
SECOND FLOOR = 69.80
BASEMENT FLOOR = 42.30
MAIN ENTRANCE = 62.19
USF = 640.30
TOP VARIES REFER TO ARCHITECTURAL
PLANS FOR DETAILS. TOP TO REMAIN
0.15m MIN. ABOVE FINISHED GRADE



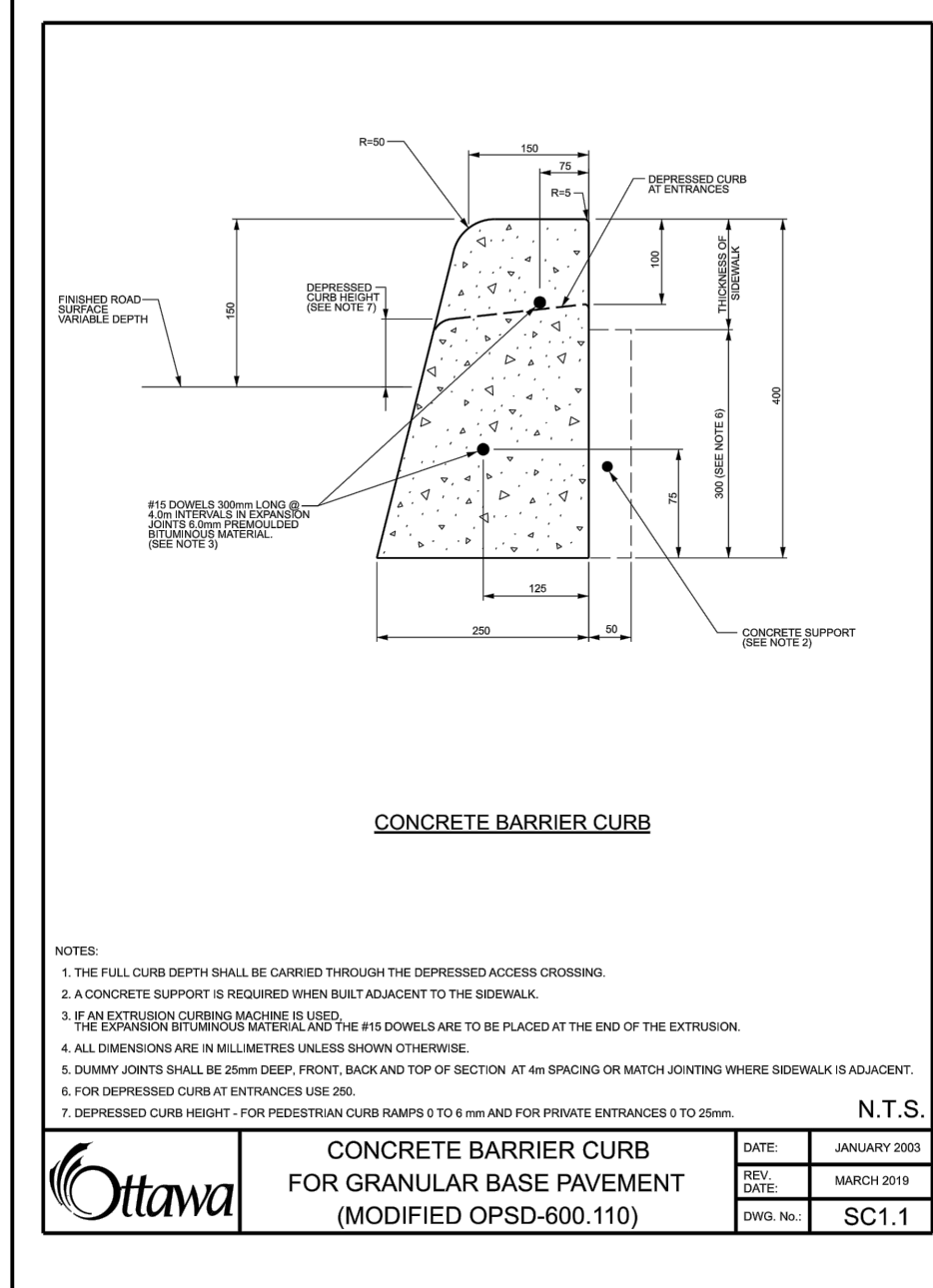
SEWER SERVICE CONNECTIONS
FOR RIGID MAIN SEWER PIPE
(MODIFIED OPSD-1006.010)
DATE: MARCH 2009
REV: MARCH 2014
DWG. NO. S11



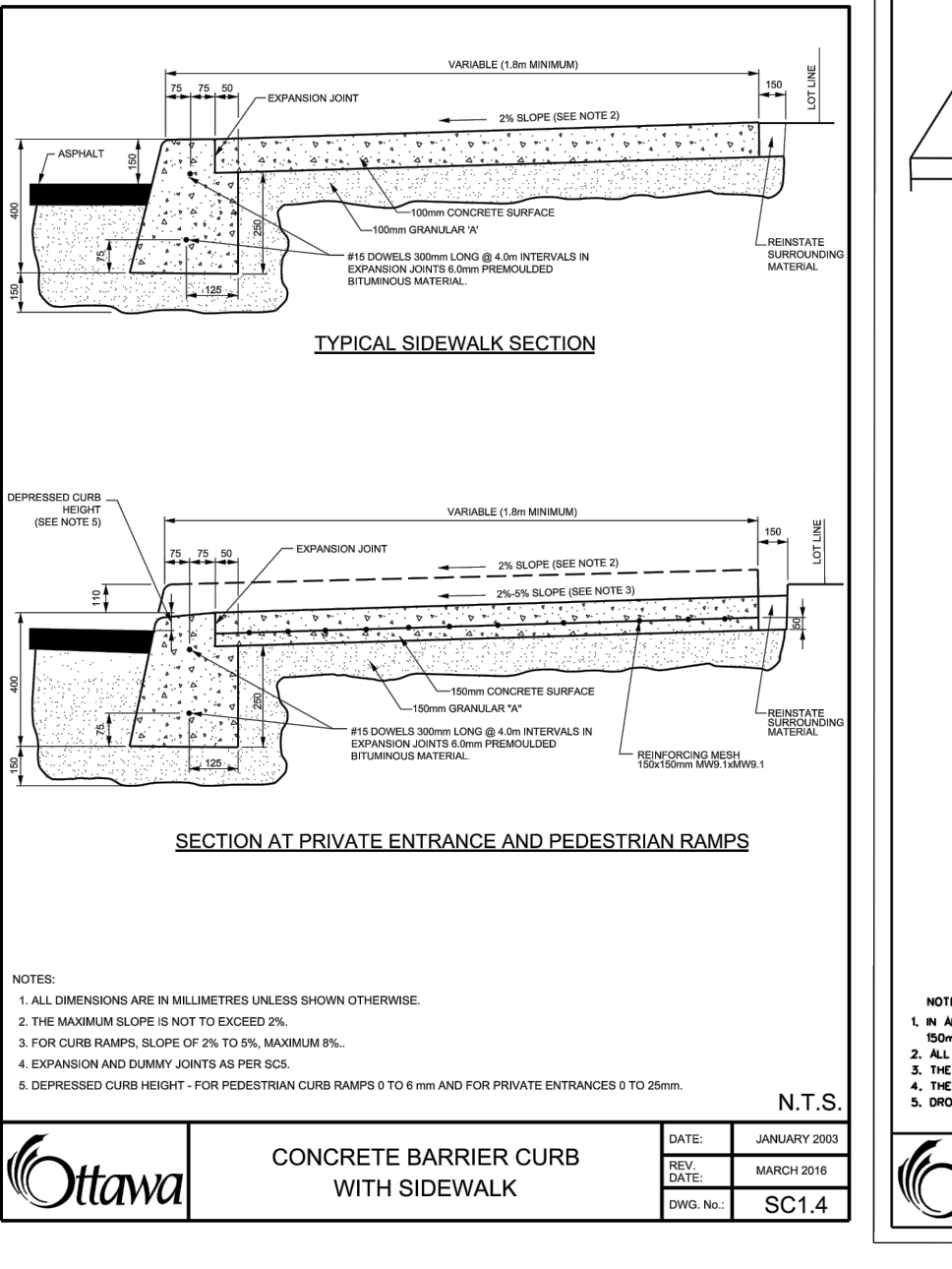
SEWER SERVICE CONNECTIONS
FOR FLEXIBLE MAIN SEWER PIPE
(MODIFIED OPSD-1006.020)
DATE: MARCH 2006
REV: MARCH 2013
DWG. NO. S11.1



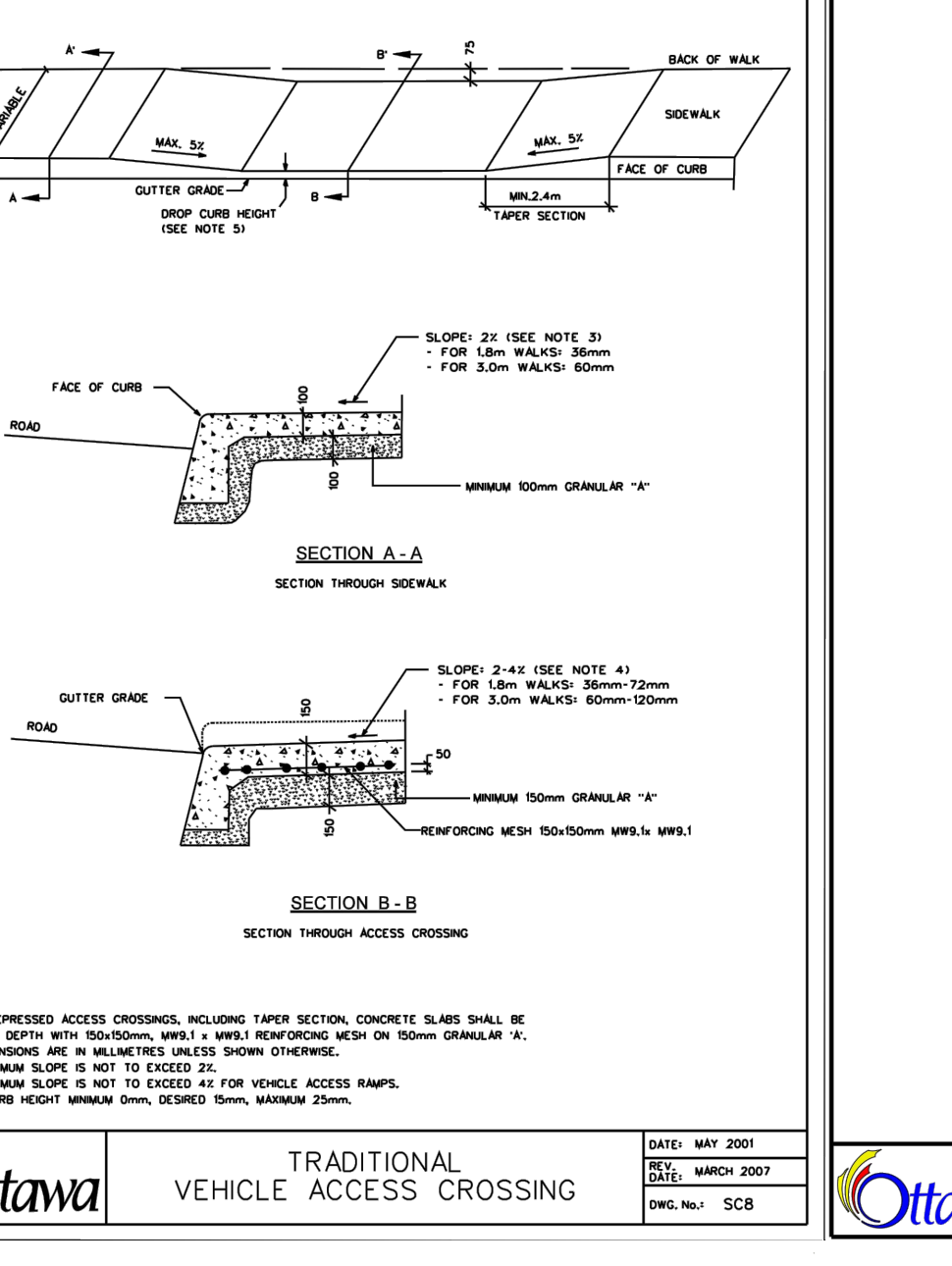
LIGHT-DUTY
SILT FENCE BARRIER
OPSD 219.110
DATE: NOV 2015
REV: 2



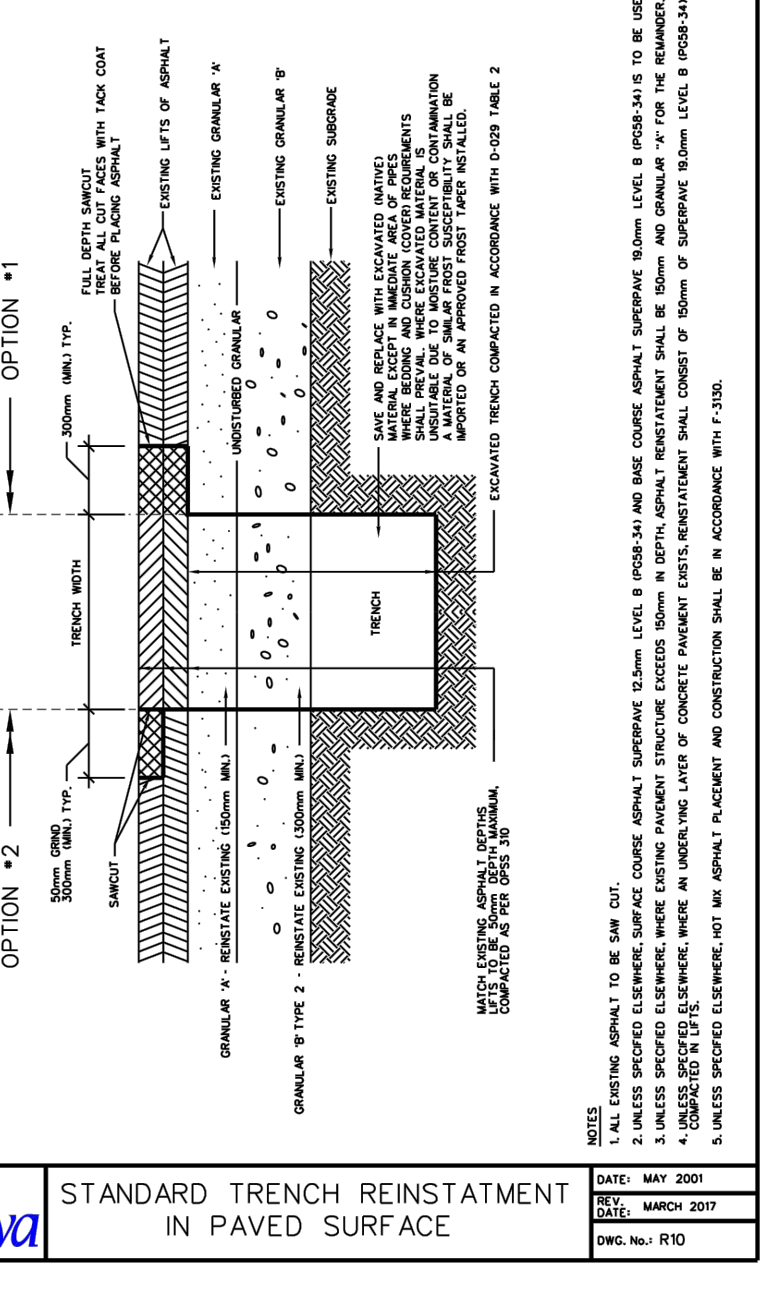
CONCRETE BARRIER CURB
FOR GRANULAR BASE PAVEMENT
(MODIFIED OPSD-600.110)
DATE: JANUARY 2003
REV: MARCH 2019
DWG. NO. SC1.1



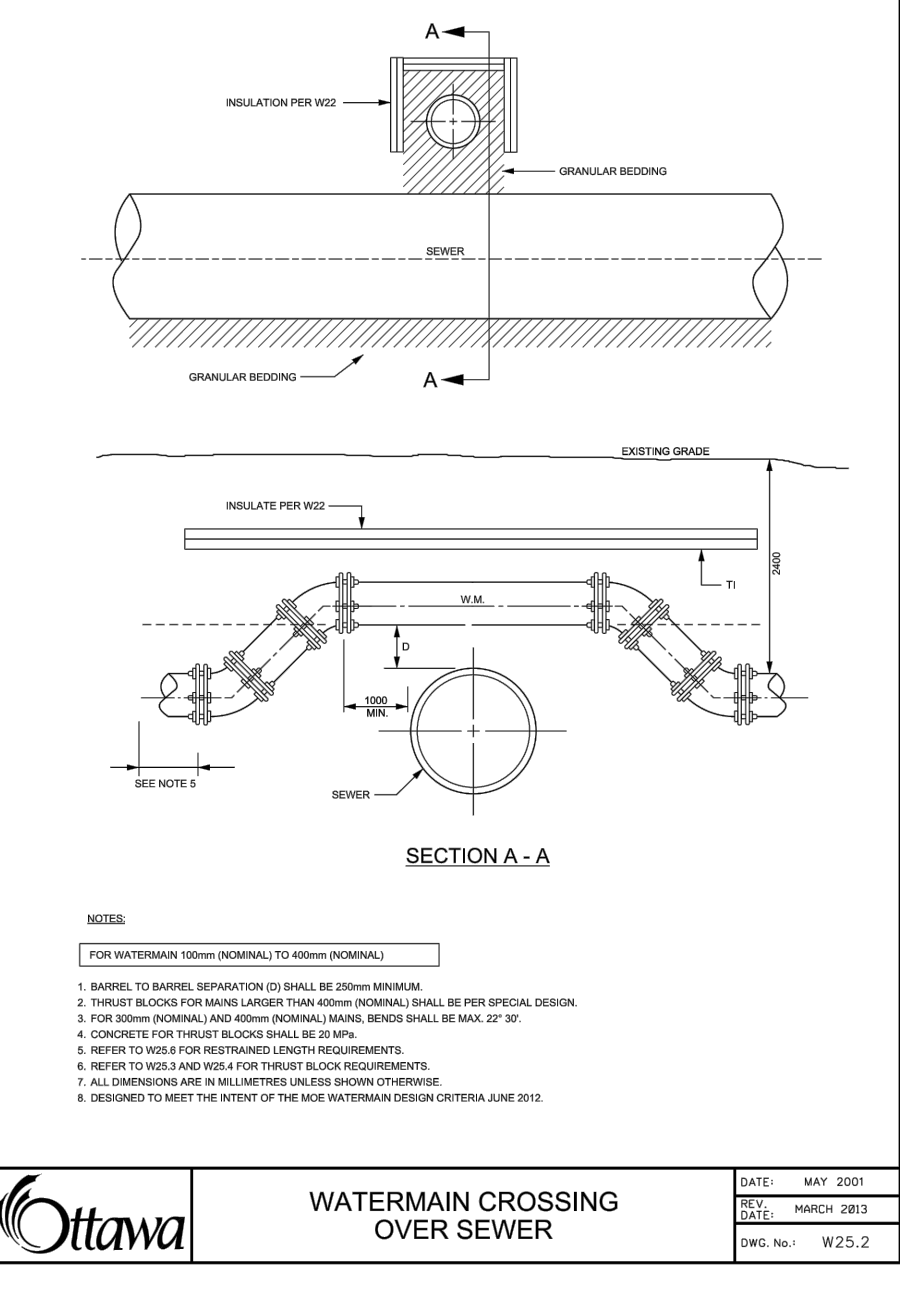
CONCRETE BARRIER CURB
WITH SIDEWALK
DATE: JANUARY 2003
REV: MARCH 2019
DWG. NO. SC1.4



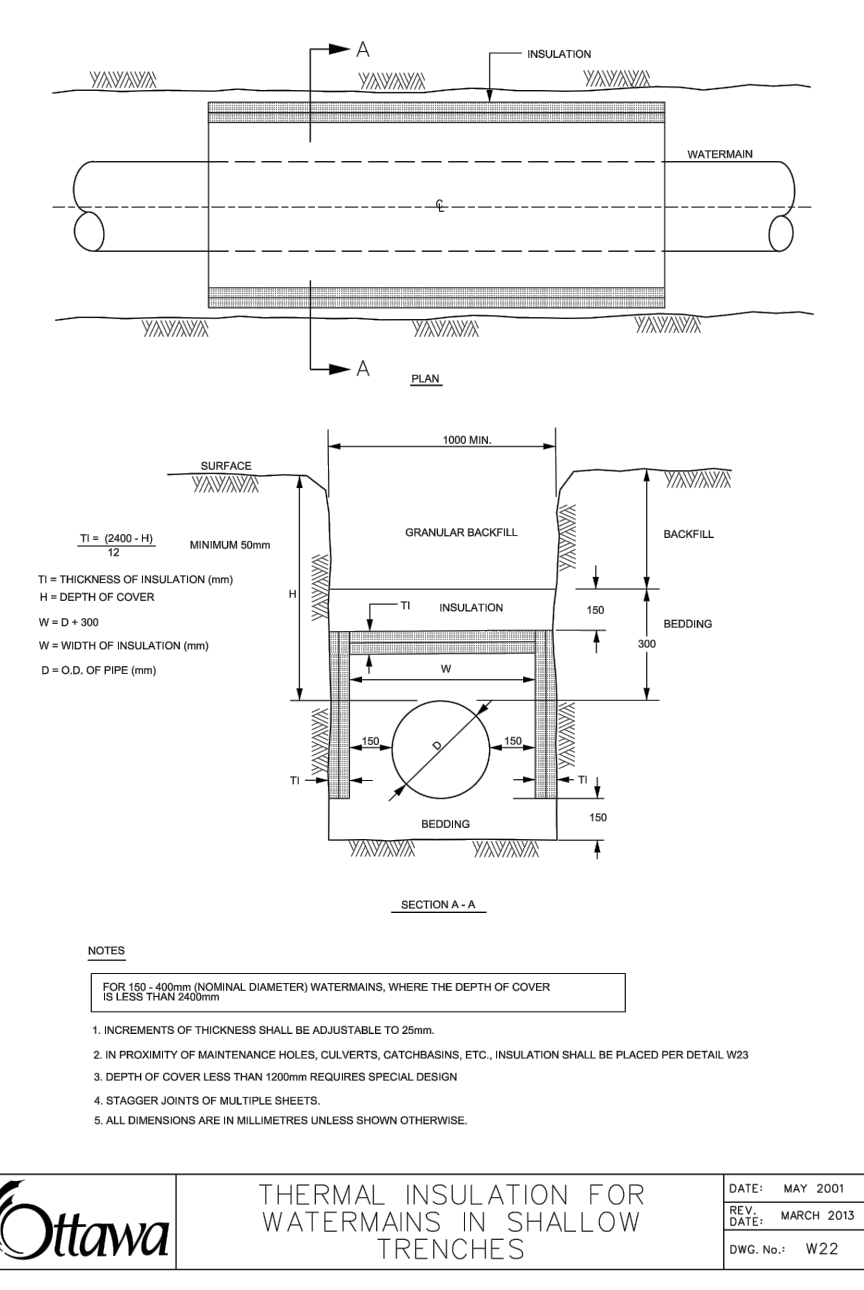
TRADITIONAL
VEHICLE ACCESS CROSSING
DATE: MAY 2007
REV: MARCH 2007
DWG. NO. SC8



STANDARD TRENCH REINSTATEMENT
IN PAVED SURFACE
DATE: MAY 2007
REV: MARCH 2007
DWG. NO. R10



WATERMAIN CROSSING
OVER SEWER
DATE: MAY 2007
REV: MARCH 2003
DWG. NO. W23.2



THERMAL INSULATION FOR
WATERMANS IN SHALLOW
TRENCHES
DATE: MAY 2007
REV: MARCH 2003
DWG. NO. W22

4	REVISED AS PER CITY COMMENTS	WAJ	SGG	19.10.15
3	REVISED PER NEW SITE PLAN	WAJ	SGG	18.10.26
2	ISSUED FOR COORDINATION	SL	SGG	18.08.22
1	ISSUED FOR SITE PLAN CONTROL	WAJ	DCT	16.10.14

Revision	By	Aspd.	YY.MM.DD	
File Name: 160401234.DB	SL	SGG	SL 18.04.20	
	Dwn.	Chkd.	Dgn.	YY.MM.DD

Client/Project
TC UNITED GROUP
800 INDUSTRIAL AVENUE
APARTMENT BUILDING
244 FOUNTAIN PLACE
OTTAWA, ONTARIO

Title
EROSION CONTROL PLAN
AND DETAIL SHEET

Project No.	Scale
160401234	AS SHOWN
Drawing No.	Sheet
	Revision

W:\Active\160401234\Final\Drawings\Drawing\160401234.DWG
2019/10/15 3:58 PM by: Johnson, Warren

D07-12-16-0150