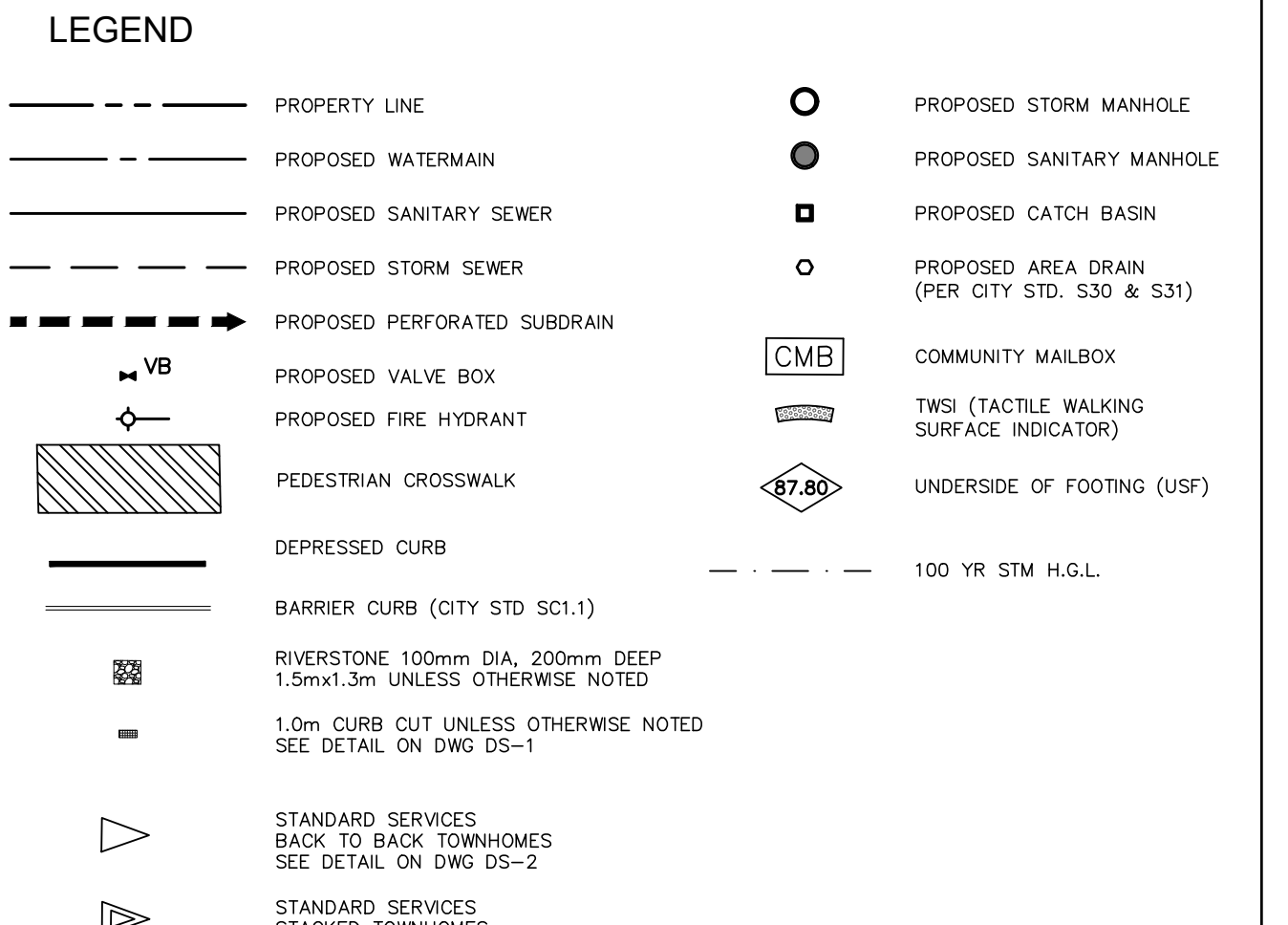
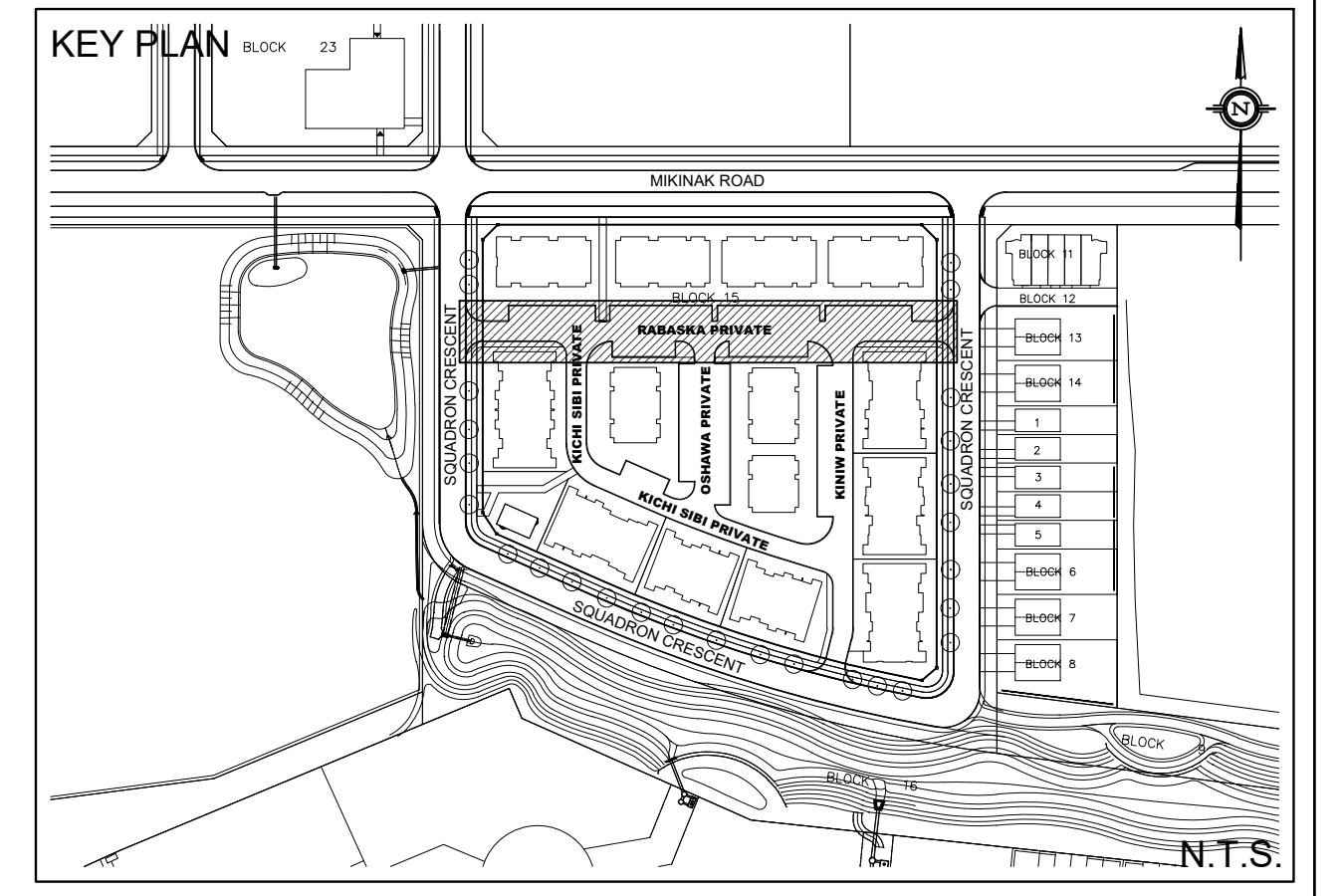


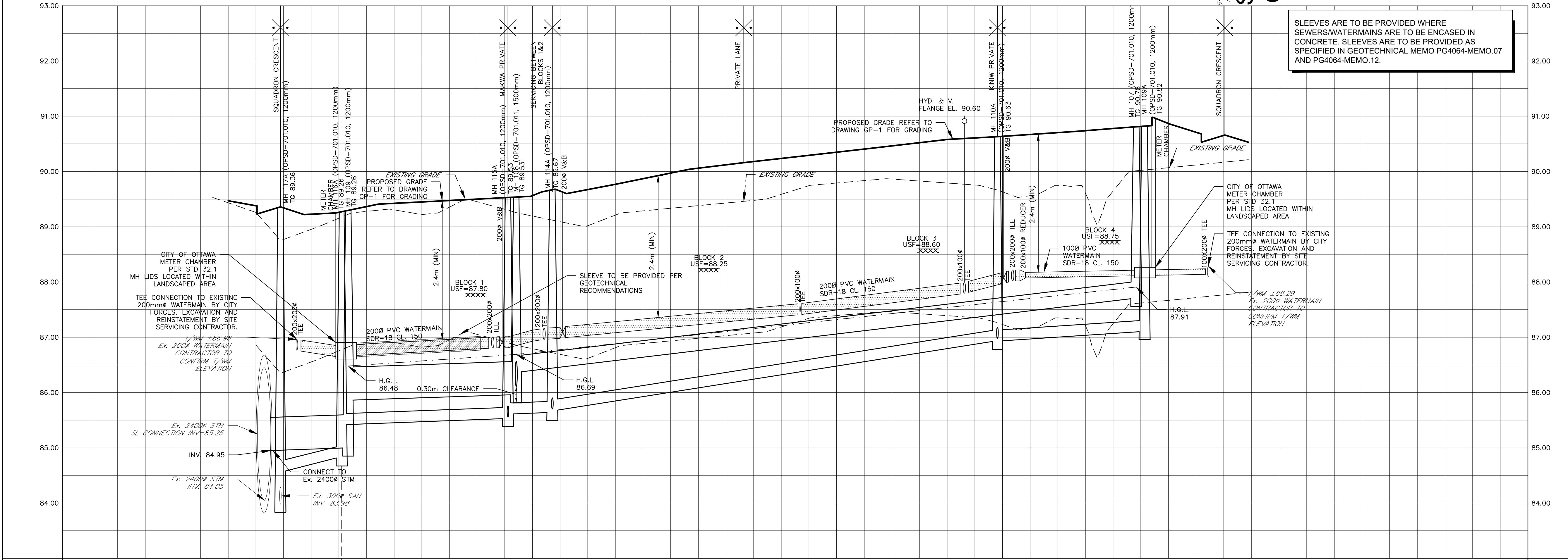
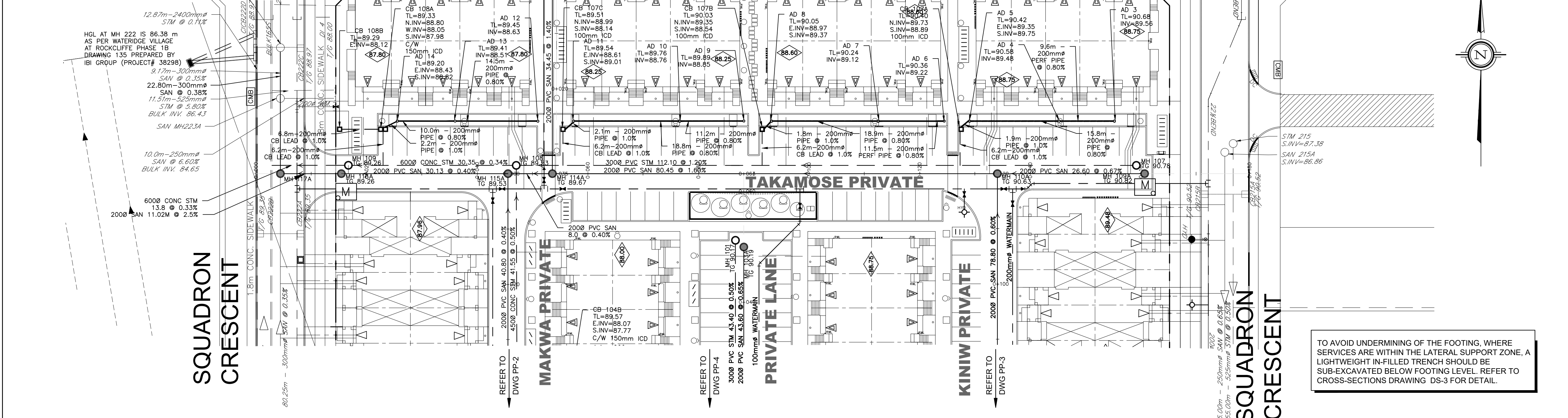
IF SILTY CLAY IS ENCOUNTERED AT THE LOWEST SERVICE INVERT LEVEL, CLAY SEALS ARE TO BE PROVIDED IN SERVICE TRENCHES AT NO MORE THAN 60 m INTERVALS. CLAY SEALS SHOULD BE AT LEAST 1.5 m LONG AND SHOULD EXTEND FROM TRENCH WALL TO TRENCH WALL AND SHOULD EXTEND FROM THE FROST LINE AND FULLY PENETRATE THE BEDDING, SUBBEDDING AND COVER MATERIAL. REFER TO GEOTECHNICAL RECOMMENDATIONS FOR CLAY SEAL REQUIREMENTS.

NOTE: ALL SANITARY SERVICE CONNECTIONS WITHIN SQUADRON CRESCENT SHALL HAVE CONTROLLED SETTLEMENT JOINTS DUE TO THE DEPTH OF THE SANITARY SEWER



TO AVOID UNDERMINING OF THE FOOTING, WHERE SERVICES ARE WITHIN THE LATERAL SUPPORT ZONE, A LIGHTWEIGHT INFILLED TRENCH SHOULD BE SUB-EXCAVATED BELOW FOOTING LEVEL. REFER TO CROSS-SECTIONS DRAWING DS-3 FOR DETAIL.

SLEEVES ARE TO BE PROVIDED WHERE SEWERS/WATERMANS ARE TO BE ENCASED IN CONCRETE. SLEEVES ARE TO BE PROVIDED AS SPECIFIED IN GEOTECHNICAL MEMO PG4064-MEMO.07 AND PG4064-MEMO.12.



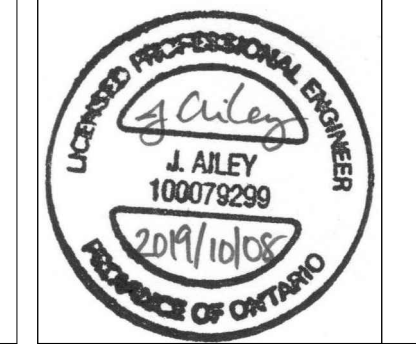
SITE PLAN INFORMATION
 SITE PLAN PROVIDED BY KORSIAK URBAN PLANNING
 DATED OCTOBER 4, 2019

GEOTECHNICAL STUDY
 GEOTECHNICAL RECOMMENDATIONS PROVIDED BY PATERSON GROUP INC.
 PROJ. NO. PG4064-2
 DATED JUNE 25, 2019

SITE SERVICING AND STORMWATER MANAGEMENT STUDY
 SERVICING AND STORMWATER MANAGEMENT RECOMMENDATIONS PROVIDED BY DSEL
 PROJ. NO. 17-946
 DATED OCTOBER 2019

BENCH MARK
 ELEVATIONS ARE GEODETIC, REFERRED TO CITY OF OTTAWA VERTICAL BENCHMARK NO. 396
 ELEV= 95.06 METERS

No.	BY	DATE	DESCRIPTION
3	G.G.G.	19.10.08	ISSUED FOR MUNICIPAL REVIEW
2	G.G.G.	19.06.28	ISSUED FOR MUNICIPAL REVIEW
1	S.L.M.	19.02.01	ISSUED FOR MUNICIPAL REVIEW



PROJECT No. 17-946

TAKAMOSE PRIVATE - PLAN & PROFILE
 (STA 0+000.00 TO STA 0+180.00)
 WATERMANS - BLOCK 15
 245 SQUADRON CRESCENT

MATTAMY HOMES
 50 Hines Road, Suite 100
 Ottawa, Ontario, K2K 2M5
 Tel: (613) 831-5144

DSEL
 david schaeffer engineering ltd
 SMART SUBDIVISIONS™
 120 Iber Road Unit 103
 Stittsville, Ontario, K2S 1E9
 Tel: (613) 836-0856
 Fax: (613) 836-7183
 www.DSEL.ca

DRAWN BY:	CHECKED BY:	S.L.M.	DRAWING NO.	SHEET NO.
G.G.G.	G.G.G.	S.L.M.	PP-1	4 of 13