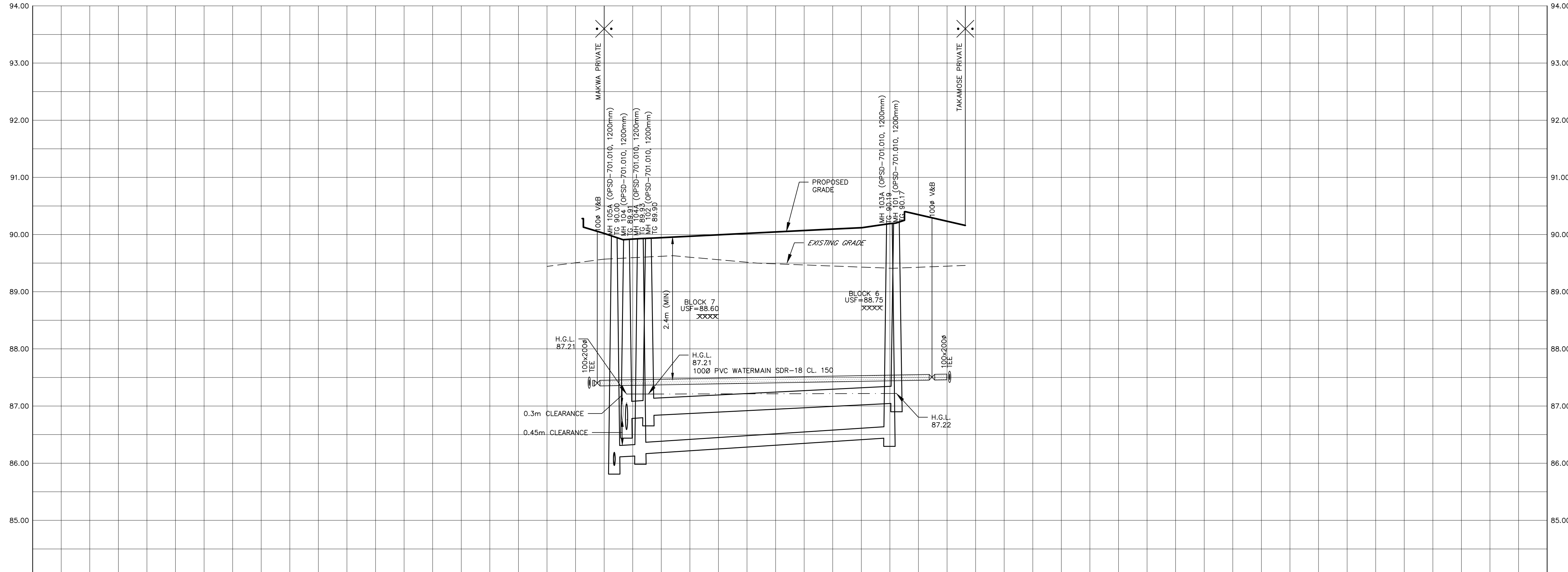
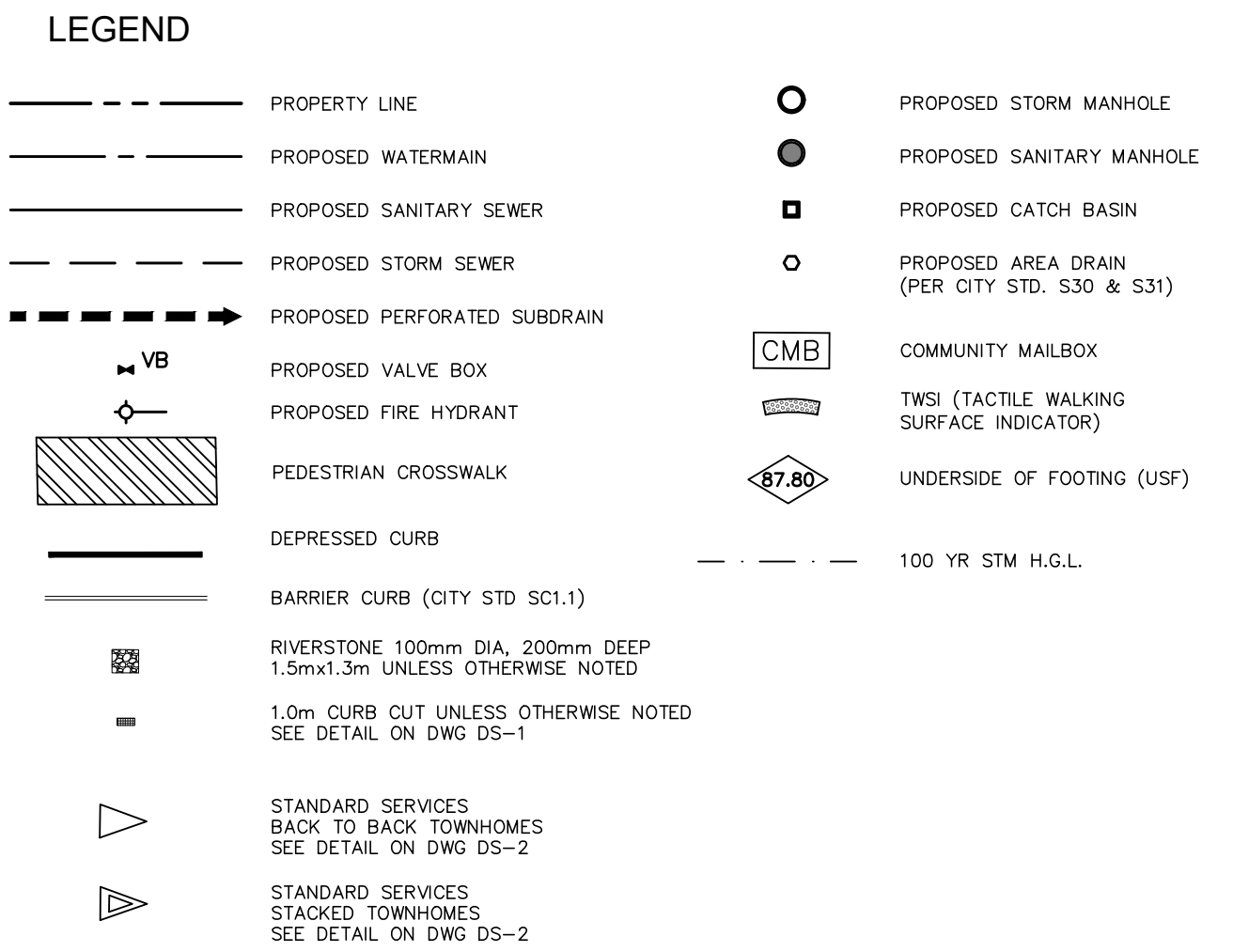
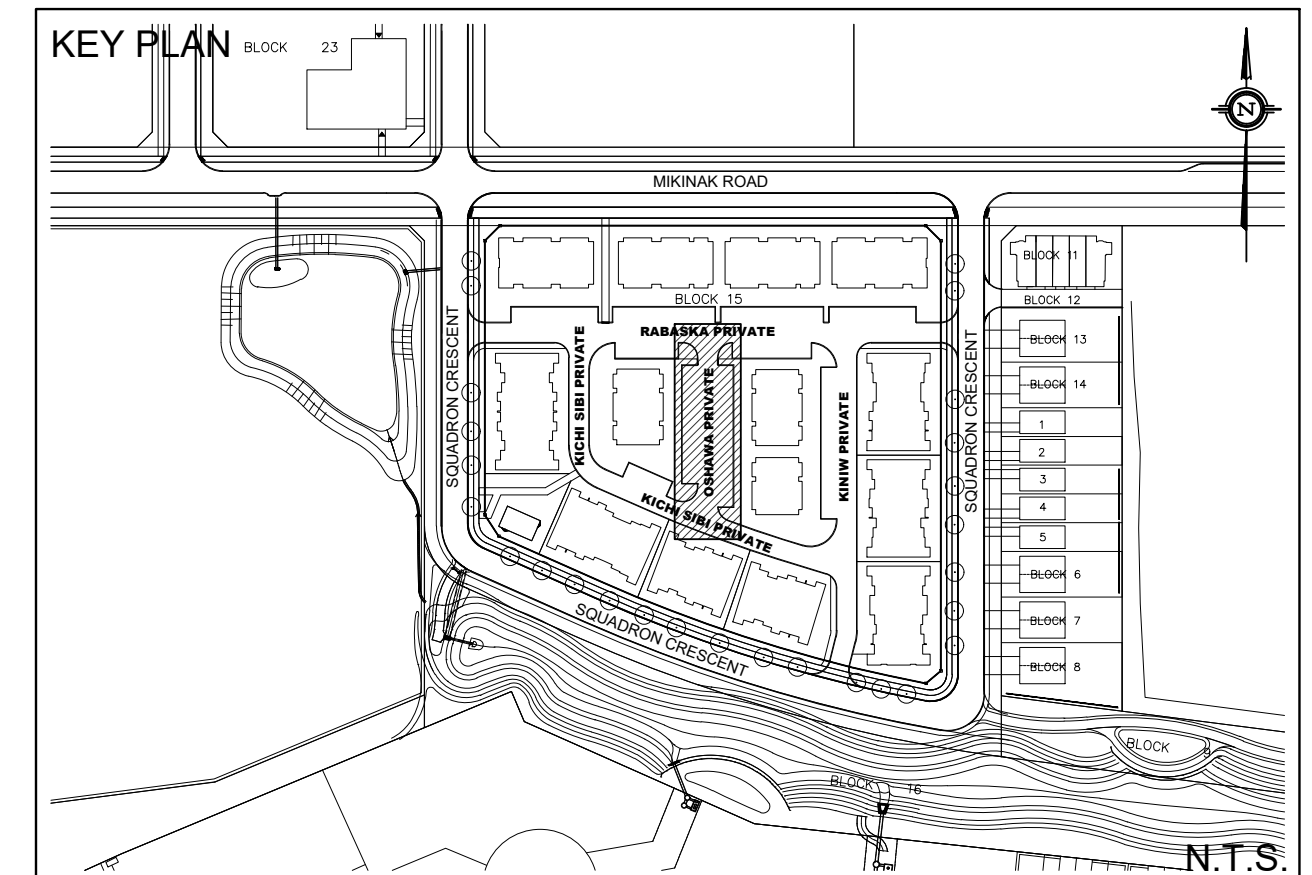
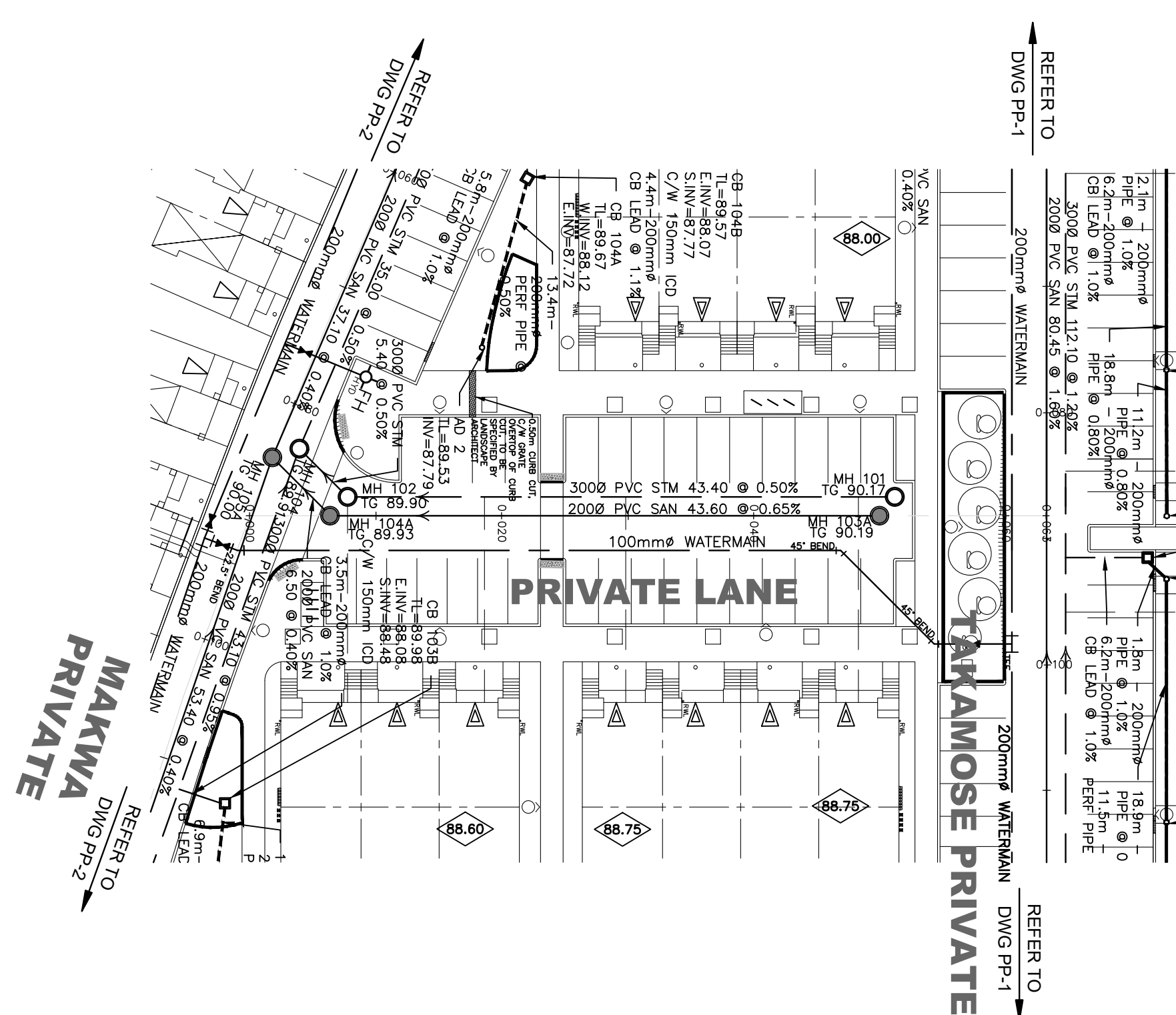


IF SILTY CLAY IS ENCOUNTERED AT THE LOWEST SERVICE INVERT LEVEL, CLAY SEALS ARE TO BE PROVIDED IN SERVICE TRENCHES AT NO MORE THAN 60 m INTERVALS. CLAY SEALS SHOULD BE AT LEAST 1.5 m LONG AND SHOULD EXTEND FROM TRENCH WALL TO TRENCH WALL AND SHOULD EXTEND FROM THE FROST LINE AND FULLY PENETRATE THE BEDDING, SUBBEDDING AND COVER MATERIAL. REFER TO GEOTECHNICAL RECOMMENDATIONS FOR CLAY SEAL REQUIREMENTS.

NOTE : ALL SANITARY SERVICE CONNECTIONS WITHIN SQUADRON CRESCENT SHALL HAVE CONTROLLED SETTLEMENT JOINTS DUE TO THE DEPTH OF THE SANITARY SEWER.

TO AVOID UNDERMINING OF THE FOOTING, WHERE SERVICES ARE WITHIN THE LATERAL SUPPORT ZONE, A LIGHTWEIGHT IN-FILLED TRENCH SHOULD BE SUB-EXCAVATED BELOW FOOTING LEVEL. REFER TO CROSS-SECTIONS DRAWING DS-3 FOR DETAIL.



**SITE PLAN INFORMATION**  
 SITE PLAN PROVIDED BY KORSIAK URBAN PLANNING  
 DATED OCTOBER 4, 2019

**GEOTECHNICAL STUDY**  
 GEOTECHNICAL RECOMMENDATIONS PROVIDED BY PATERSON GROUP INC.  
 PROJ. NO. PG4084-2  
 DATED JUNE 25, 2019

**SITE SERVICING AND STORMWATER MANAGEMENT STUDY**  
 SERVICING AND STORMWATER MANAGEMENT RECOMMENDATIONS PROVIDED BY DSEL  
 PROJ. NO. 17-946  
 DATED OCTOBER 2019

**BENCH MARK**  
 ELEVATIONS ARE GEODETIC, REFERRED TO CITY OF OTTAWA VERTICAL BENCHMARK NO. 396  
 ELEV= 95.06 METERS

No.	BY	DATE	DESCRIPTION
3	G.G.C.	19.10.08	ISSUED FOR MUNICIPAL REVIEW
2	G.G.C.	19.06.28	ISSUED FOR MUNICIPAL REVIEW
1	S.L.M.	19.02.01	ISSUED FOR MUNICIPAL REVIEW

TOP OF WATERMAIN	TOP OF WATERMAIN
45° HORIZONTAL BEND HORIZONT. BEND 87.536 45° HORIZONTAL BEND HORIZONT. BEND 87.549 100% V/S PROPOSED 87.560	45° HORIZONTAL BEND HORIZONT. BEND 87.536 45° HORIZONTAL BEND HORIZONT. BEND 87.549 100% V/S PROPOSED 87.560
2000 PVC SAN 6.50 @ 0.40% SDR-35 SE 85.989 NW 85.959 NE 86.105 SW 86.131 N 86.151	2000 PVC SAN 43.60 @ 0.65% SDR-35 S 86.444
3000 PVC STM 5.40 @ 0.50% SDR-35 E 86.739 W 86.589 NE 86.776 SW 86.803 N 86.833	3000 PVC STM 43.40 @ 0.50% SDR-35 S 87.050
90.130 90.020 89.910 89.830 89.940 89.970 90.020 90.090 90.120 90.190 90.200 90.400 90.400 90.160	90.130 90.020 89.910 89.830 89.940 89.970 90.020 90.090 90.120 90.190 90.200 90.400 90.400 90.160
0+000.000 0+001.774 0+003.908 0+006.340 0+007.739 0+020.000 0+040.000 0+046.853 0+049.915 0+051.148 0+054.273 0+057.360 0+060.447 0+080.000	0+000.000 0+020.000 0+040.000 0+046.853 0+049.915 0+051.148 0+054.273 0+057.360 0+060.447 0+080.000
CENTERLINE CHAINAGE	CENTERLINE CHAINAGE

PROJECT No. 17-946

**PRIVATE LANE - PLAN & PROFILE**  
 (STA 0+000.00 TO STA 0+080.00)  
 WATERIDGE - BLOCK 15  
 245 SQUADRON CRESCENT

MATTAMY HOMES

**DSEL**  
 david schaeffer engineering ltd  
 SMART SUBDIVISIONS™

50 Hines Road, Suite 100  
 Ottawa, Ontario, K2K 2M5  
 Tel. (613) 831-5144

120 Iber Road Unit 103  
 Stittsville, Ontario, K2K 1E9  
 Tel. (613) 836-0856  
 Fax. (613) 836-7183  
 www.DSEL.ca

DRAWN BY: G.G.C.	CHECKED BY: S.L.M.	DRAWING NO. PP-4	SHEET NO. 7 of 13
DESIGNED BY: G.G.C.	CHECKED BY: S.L.M.		
SCALE: H 1:400, V 1:40	DATE: JANUARY 2019		

D07-12-19-0020