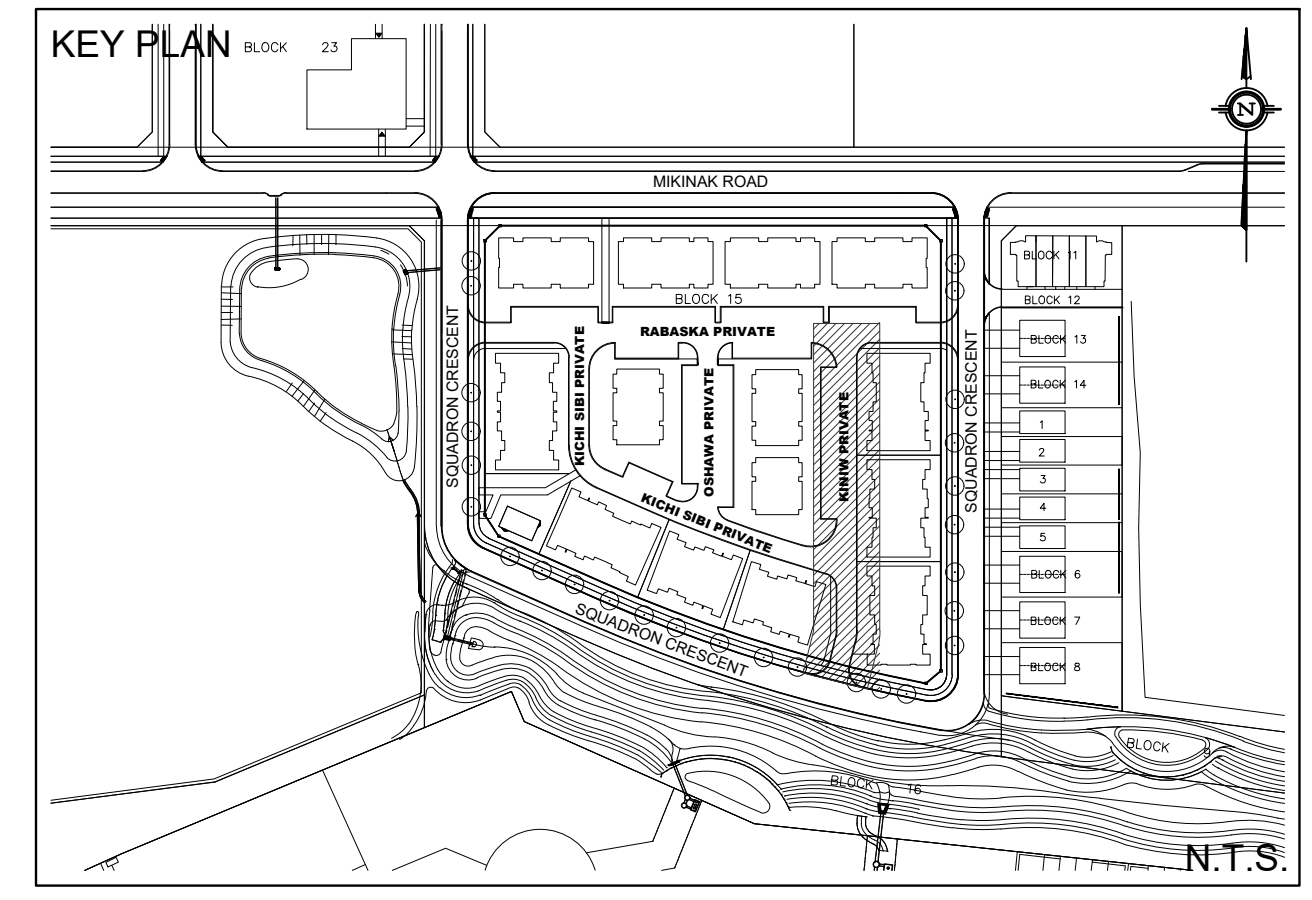
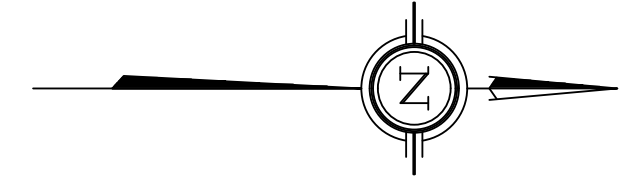


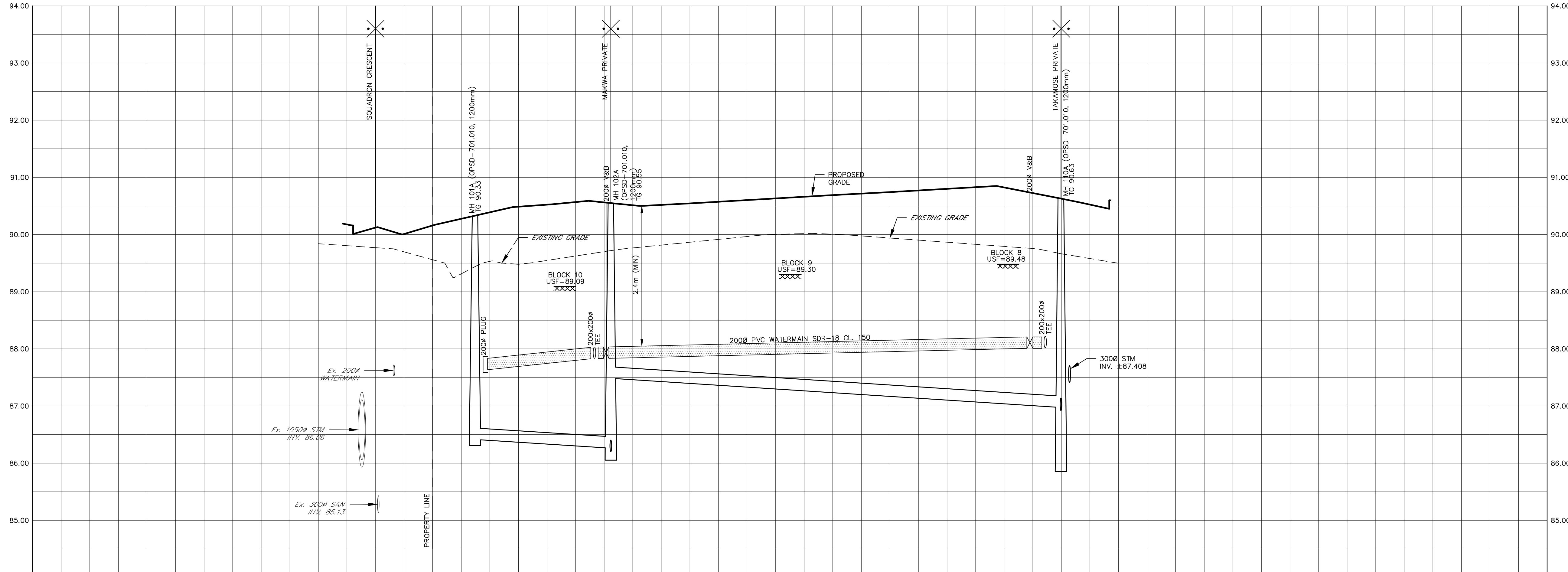
NOTE : ALL SANITARY SERVICE CONNECTIONS WITHIN SQUADRON CRESCENT SHALL HAVE CONTROLLED SETTLEMENT JOINTS DUE TO THE DEPTH OF THE SANITARY SEWER.

TO AVOID UNDERMINING OF THE FOOTING, WHERE SERVICES ARE WITHIN THE LATERAL SUPPORT ZONE, A LIGHTWEIGHT IN-FILLED TRENCH SHOULD BE SUB-EXCAVATED BELOW FOOTING LEVEL. REFER TO CROSS-SECTIONS DRAWING DS-3 FOR DETAIL.



- LEGEND**
- PROPERTY LINE
  - PROPOSED WATERMAIN
  - PROPOSED SANITARY SEWER
  - PROPOSED STORM SEWER
  - - - - PROPOSED PERFORATED SUBDRAIN
  - VB PROPOSED VALVE BOX
  - FD PROPOSED FIRE HYDRANT
  - ▨ PEDESTRIAN CROSSWALK
  - DEPRESSED CURB
  - BARRIER CURB (CITY STD SC1.1)
  - ▨ RIVERSTONE 100mm DIA, 200mm DEEP 1.5m x 1.3m UNLESS OTHERWISE NOTED
  - 1.0m CURB CUT UNLESS OTHERWISE NOTED SEE DETAIL ON DWG DS-1
  - ▽ STANDARD SERVICES BACK TO BACK TOWNHOMES SEE DETAIL ON DWG DS-2
  - ▽ STANDARD SERVICES STACKED TOWNHOMES SEE DETAIL ON DWG DS-2
  - PROPOSED STORM MANHOLE
  - PROPOSED SANITARY MANHOLE
  - PROPOSED CATCH BASIN
  - PROPOSED AREA DRAIN (PER CITY STD. S30 & S31)
  - CMB COMMUNITY MAILBOX
  - TWSI (TACTILE WALKING SURFACE INDICATOR)
  - ▽87.80 UNDERSIDE OF FOOTING (USF)
  - - - - 100 YR STM H.G.L.

IF SILTY CLAY IS ENCOUNTERED AT THE LOWEST SERVICE INVERT LEVEL, CLAY SEALS ARE TO BE PROVIDED IN SERVICE TRENCHES AT NO MORE THAN 60 m INTERVALS. CLAY SEALS SHOULD BE AT LEAST 1.5 m LONG AND SHOULD EXTEND FROM TRENCH WALL TO TRENCH WALL AND SHOULD EXTEND FROM THE FROST LINE AND FULLY PENETRATE THE BEDDING, SUBBEDDING AND COVER MATERIAL. REFER TO GEOTECHNICAL RECOMMENDATIONS FOR CLAY SEAL REQUIREMENTS.



**SITE PLAN INFORMATION**  
 SITE PLAN PROVIDED BY KORSIAK URBAN PLANNING  
 DATED OCTOBER 4, 2019

**GEOTECHNICAL STUDY**  
 GEOTECHNICAL RECOMMENDATIONS PROVIDED BY PATERSON GROUP INC.  
 PROJ. NO. PG4084-2  
 DATED JUNE 25, 2019

**SITE SERVICING AND STORMWATER MANAGEMENT STUDY**  
 SERVICING AND STORMWATER MANAGEMENT RECOMMENDATIONS PROVIDED BY DSEL  
 PROJ. NO. 17-946  
 DATED OCTOBER 2019

**BENCH MARK**  
 ELEVATIONS ARE GEODETIC, REFERRED TO CITY OF OTTAWA VERTICAL BENCHMARK NO. 396  
 ELEV= 95.06 METERS

No.	BY	DATE	DESCRIPTION
3	G.G.G.	19.10.08	ISSUED FOR MUNICIPAL REVIEW
2	G.G.G.	19.06.28	ISSUED FOR MUNICIPAL REVIEW
1	S.L.M.	19.02.01	ISSUED FOR MUNICIPAL REVIEW

PROJECT No. 17-946

**KINIW PRIVATE - PLAN & PROFILE**  
 (STA 0+000.00 TO STA 0+120.00)  
 WATERIDGE - BLOCK 15  
 245 SQUADRON CRESCENT

MATTAMY HOMES  
 50 Hines Road, Suite 100  
 Ottawa, Ontario, K2K 2M5  
 Tel. (613) 831-5144

**DSEL**  
 david schaeffer engineering ltd  
 SMART SUBDIVISIONS™  
 120 Iber Road Unit 103  
 Stittsville, Ontario, K2S 1E9  
 Tel. (613) 836-0856  
 Fax. (613) 836-7183  
 www.DSEL.ca

DRAWN BY:	G.G.G.	CHECKED BY:	S.L.M.	DRAWING NO.	SHEET NO.
DESIGNED BY:	G.G.G.	CHECKED BY:	S.L.M.	PP-3	6 of 13
SCALE:	H 1:400, V 1:40	DATE:	JANUARY 2019		