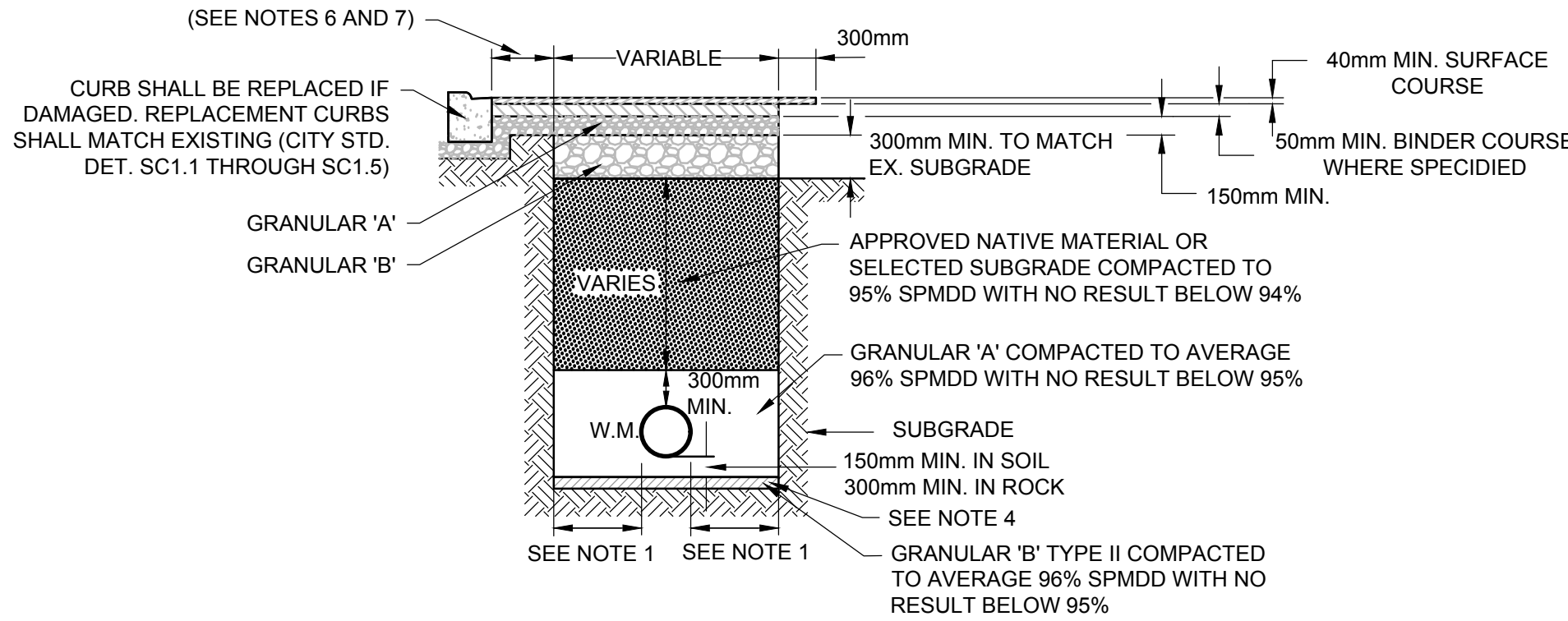


#### NOTES:

- | PIPE INSIDE DIAMETER (mm) | CLEARANCE (mm)      |
|---------------------------|---------------------|
| 900 OR LESS               | CONC 450<br>PVC 450 |
| OVER 900                  | 500                 |
- FINAL BACKFILL - APPROVED NATIVE MATERIAL OR SELECT SUBGRADE
- ALL DIMENSION ARE IN MILLIMETERS UNLESS SHOWN OTHERWISE.
- WHEN NECESSARY POOR SOILS SHALL BE EXCAVATED TO CREATE A FOUNDATION THAT SHALL BE FILLED TO THE BOTTOM OF THE BEDDING WITH GRANULAR 'B'.
- THE USE OF CLEAR CRUSHED STONE AS A BEDDING LAYER IS NOT PERMITTED ANYWHERE ON THIS SITE.
- ALL EXISTING ASPHALT AND CONCRETE REMOVAL LIMITS TO BE SAWCUT.
- 300 MM KEY TO BE SAWCUT AND REMOVED OR MILLED.
- ROAD REINSTATEMENT ON THE CURB SIDE OF THE TRENCH EXCAVATION SHALL EXTEND TO THE CURB FACE.
- TACK COAT SHALL BE APPLIED TO ALL MILLED SURFACES

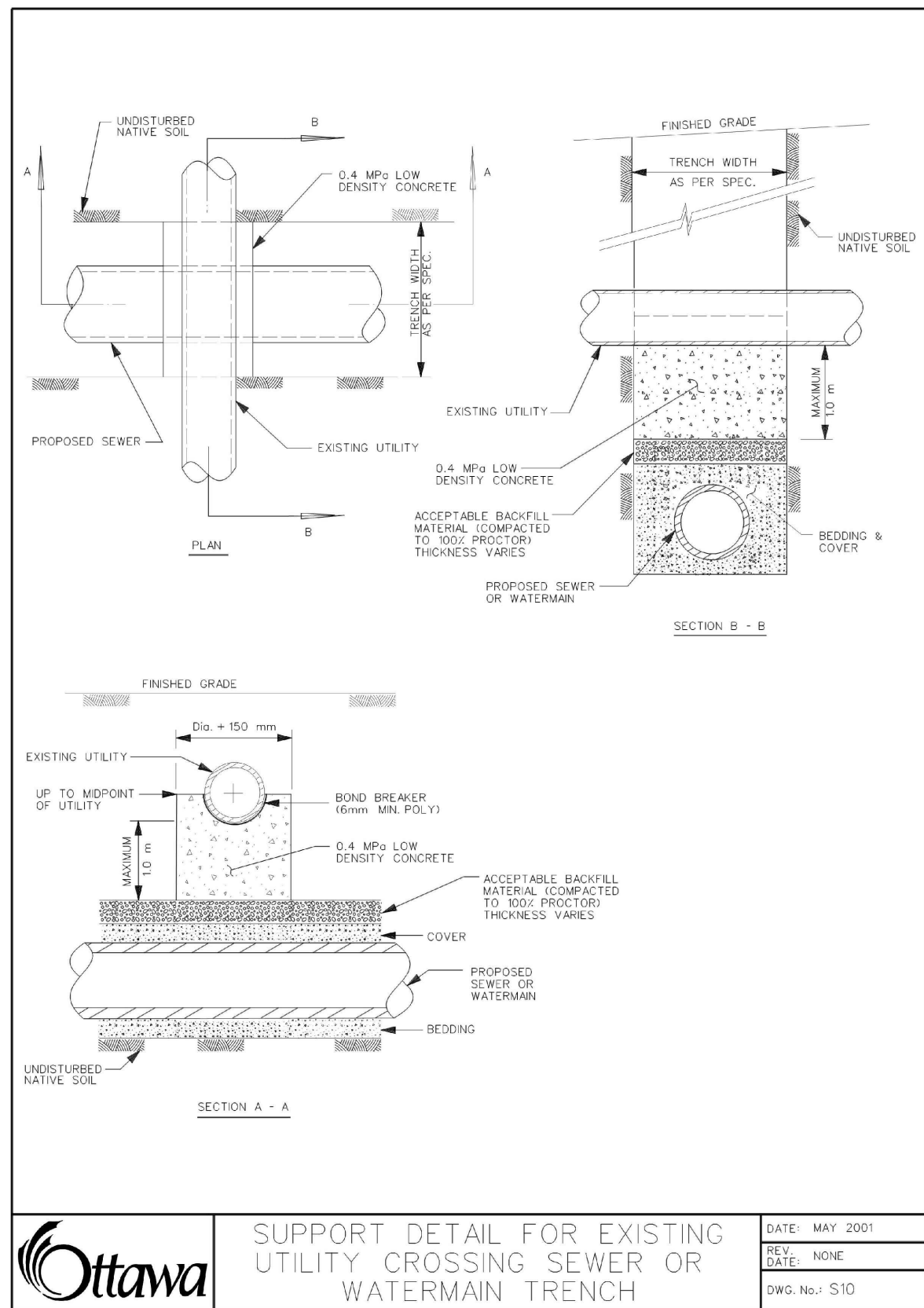
### 1 SEWER INSTALLATION TYPICAL DETAIL N.T.S.



#### NOTES:

- | PIPE INSIDE DIAMETER (mm) | CLEARANCE (mm) |
|---------------------------|----------------|
| 900 OR LESS               | 450            |
| OVER 900                  | 500            |
- ALL EXISTING ASPHALT REMOVAL AND CONCRETE LIMITS TO BE SAWCUT.
- TRENCH SHALL BE IN ACCORDANCE WITH CITY OF OTTAWA STANDARD DETAIL W17.
- WHEN NECESSARY POOR SOILS SHALL BE EXCAVATED TO CREATE A FOUNDATION THAT SHALL BE FILLED TO THE BOTTOM OF THE BEDDING WITH GRANULAR 'B'.
- THE USE OF CLEAR CRUSHED STONE AS A BEDDING LAYER IS NOT PERMITTED ANYWHERE ON THIS SITE.
- 300mm KEY TO BE SAWCUT AND REMOVED OR MILLED.
- ROAD REINSTATEMENT ON THE CURB SIDE OF THE TRENCH EXCAVATION SHALL EXTEND TO THE CURB FACE.
- TACK COAT SHALL BE APPLIED TO ALL MILLED SURFACES.

### 2 WATERMAIN INSTALLATION TYPICAL DETAIL N.T.S.



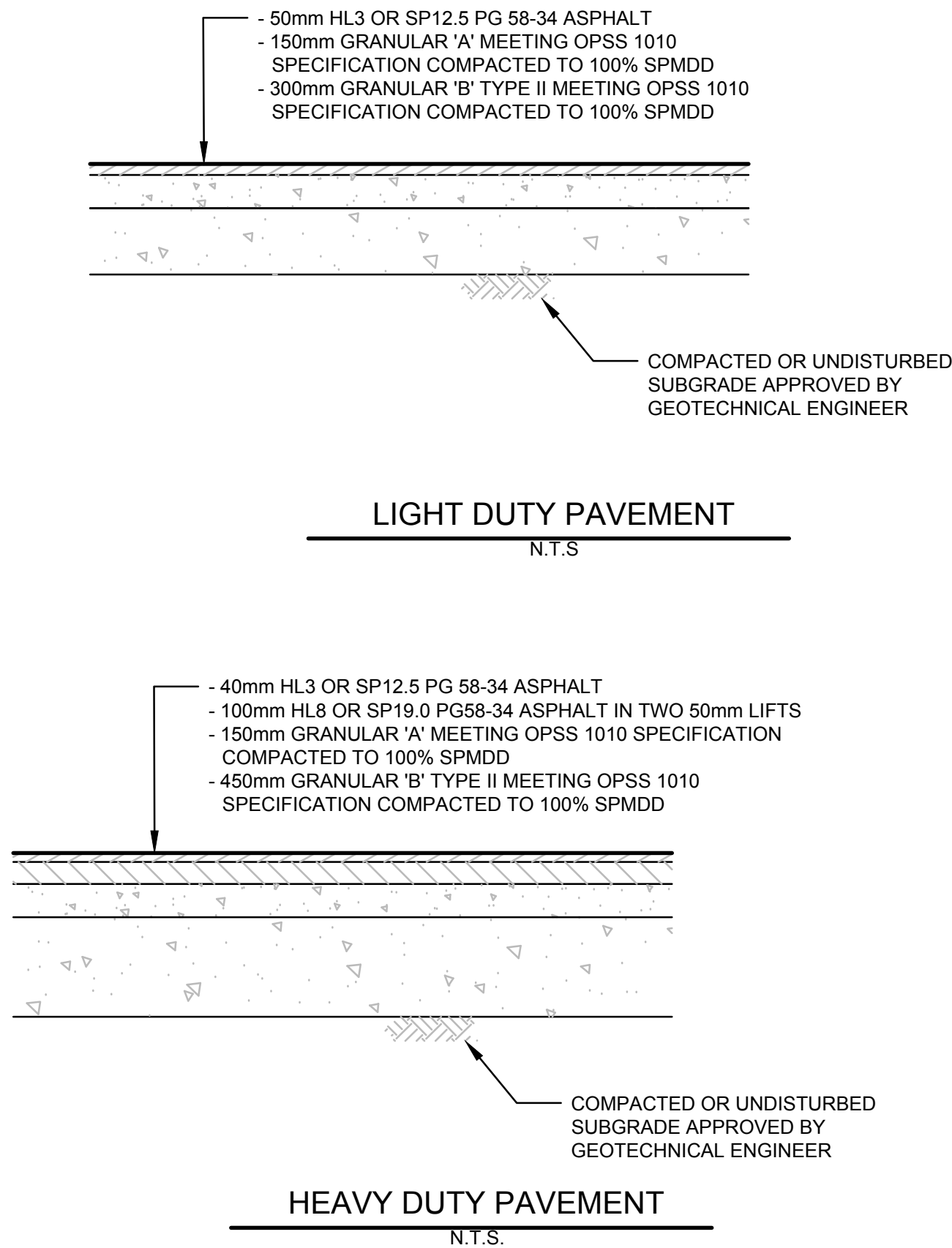
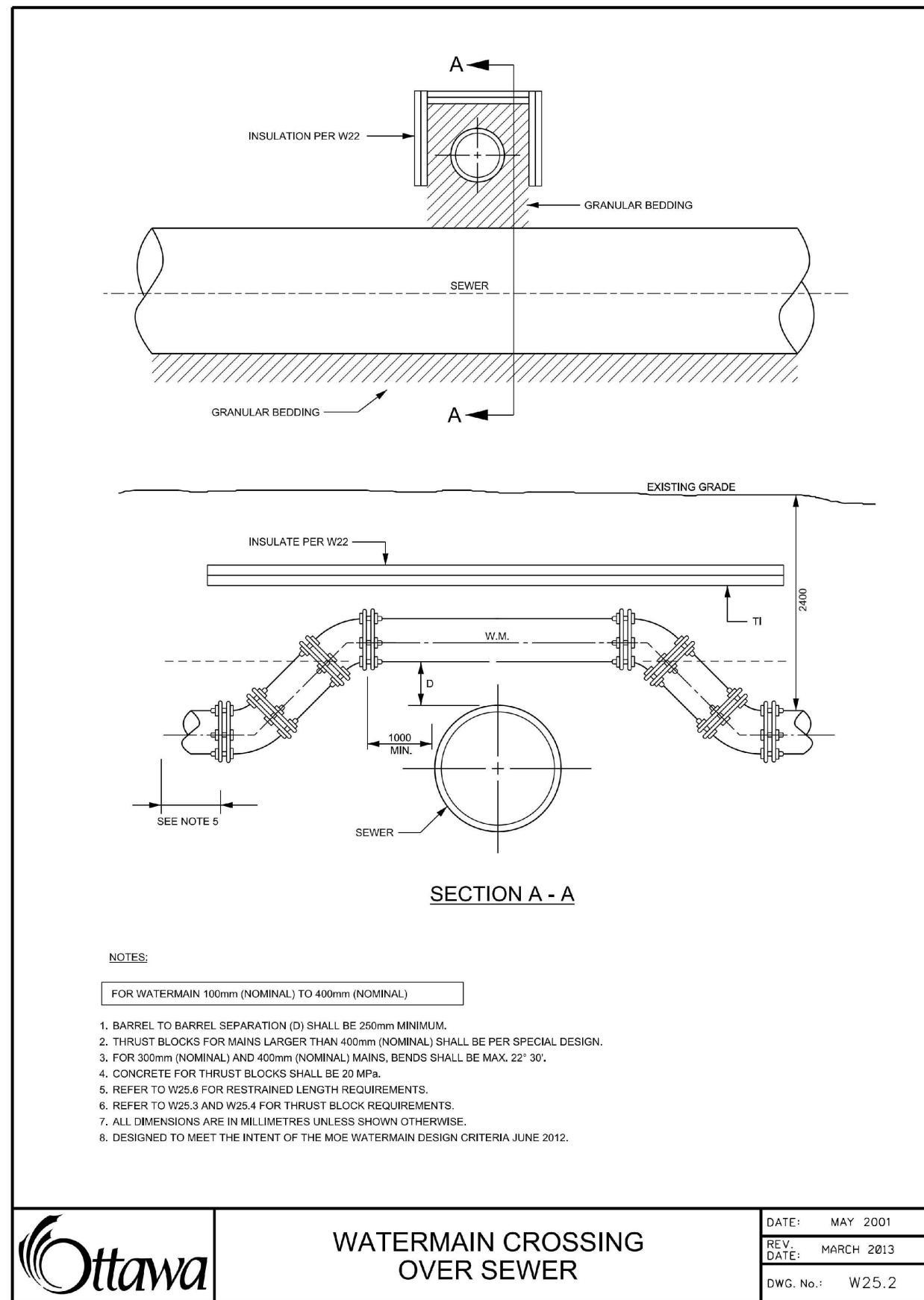
**Ottawa**

SUPPORT DETAIL FOR EXISTING UTILITY CROSSING SEWER OR WATERMAIN TRENCH

DATE: MAY 2001

REV. DATE: NONE

DWG. No.: S10



NOT FOR CONSTRUCTION

CONTRACTOR MUST CHECK & VERIFY ALL DIMENSIONS ON THE JOB.

DO NOT SCALE DRAWINGS.

ALL DRAWINGS, SPECIFICATIONS AND RELATED DOCUMENTS ARE THE COPYRIGHT PROPERTY OF THE ARCHITECT AND MUST BE RETURNED UPON REQUEST. REPRODUCTION OF DRAWINGS, SPECIFICATIONS AND RELATED DOCUMENTS IN PART OR IN WHOLE IS FORBIDDEN WITHOUT THE WRITTEN PERMISSION OF THE ARCHITECT.

THIS DRAWING IS NOT TO BE USED FOR CONSTRUCTION UNTIL SIGNED BY THE ARCHITECT.

**MORRISON HERSHFELD**

200-2932 BASELINE ROAD, OTTAWA, ON K2H 1B1

**SITE**

**KEY PLAN**

**ISSUED**

No.	Date	Description
01	02/10/2019	ISSUED FOR SITE PLAN CONTROL

**LICENSED PROFESSIONAL ENGINEER**

**J. G. FOLKES**

**100202820**

**PROVINCE OF ONTARIO**

Architects in good standing for the Canadian University Engineering Design Centre.

**Diamond Schmitt Architects**

384 Adelaide Street West  
Suite 100  
Toronto, Ontario  
M5V 1R7 Canada

Tel: 416 862 8800  
Fax: 416 862 5508  
info@dsai.ca  
www.dsai.ca

**KWC Architects Inc.**

383 Portland Avenue  
Suite 201  
Ottawa, Ontario  
K1P 4K4 Canada

Tel: 613 238 2117  
Fax: 613 238 8395  
kwc@kwc-arch.com  
www.kwc-arch.com

**CARLETON UNIVERSITY**

**ENGINEERING DESIGN CENTRE**

1125 Colonel By Drive,  
Ottawa, Ontario  
K1S 5B6

#### DETAILS

Scale: N.T.S.

Project No: 190350600

Date: OCTOBER, 2019

C003