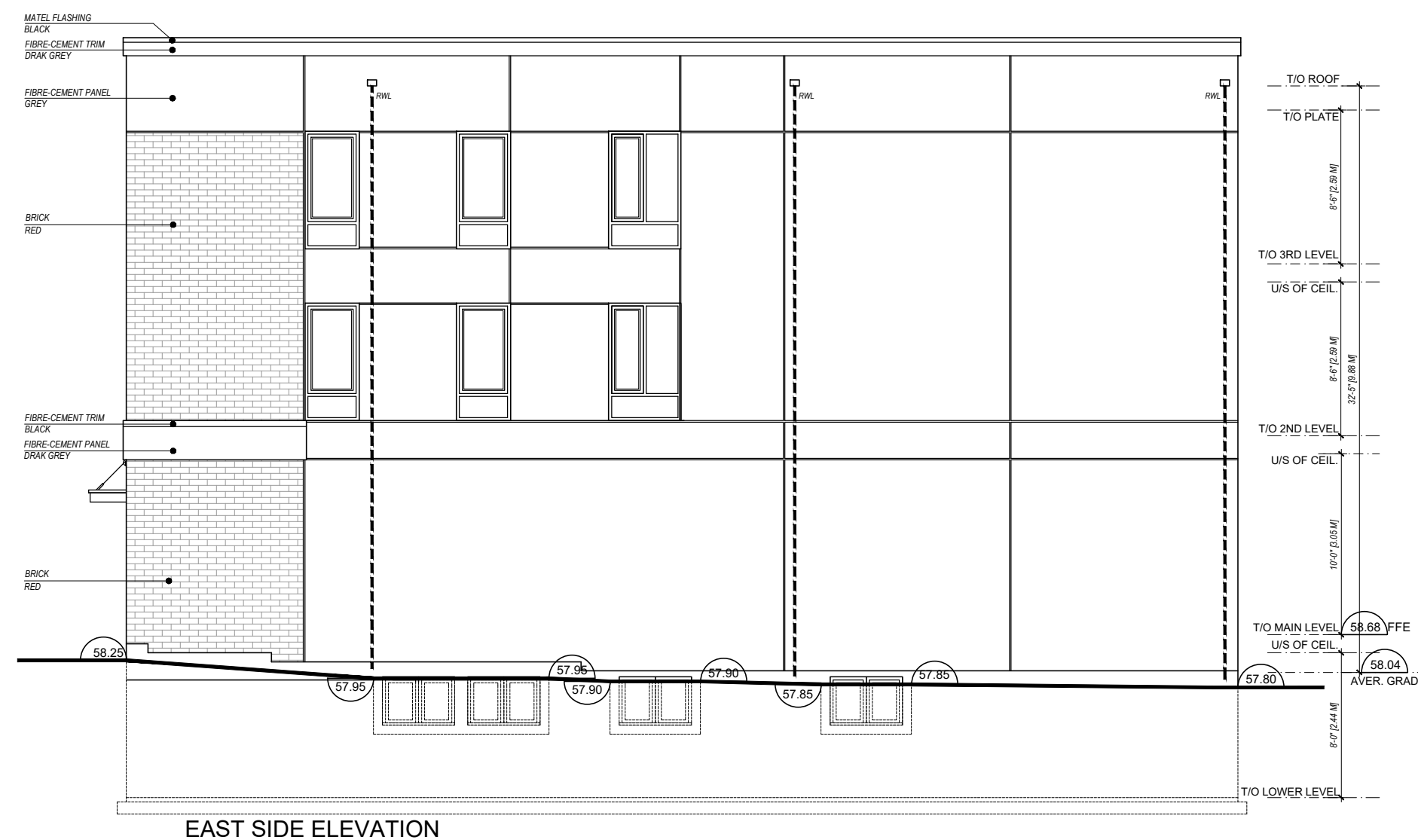
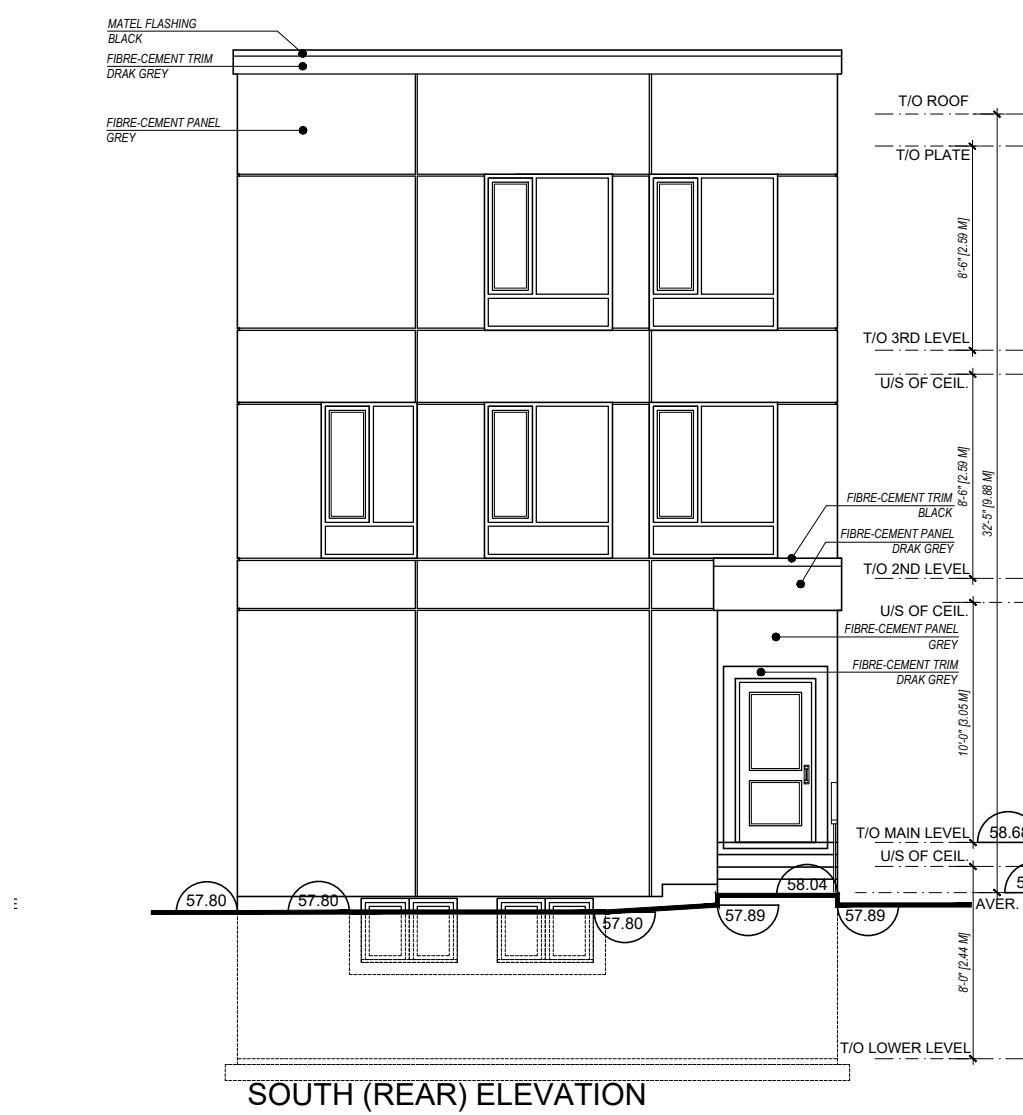
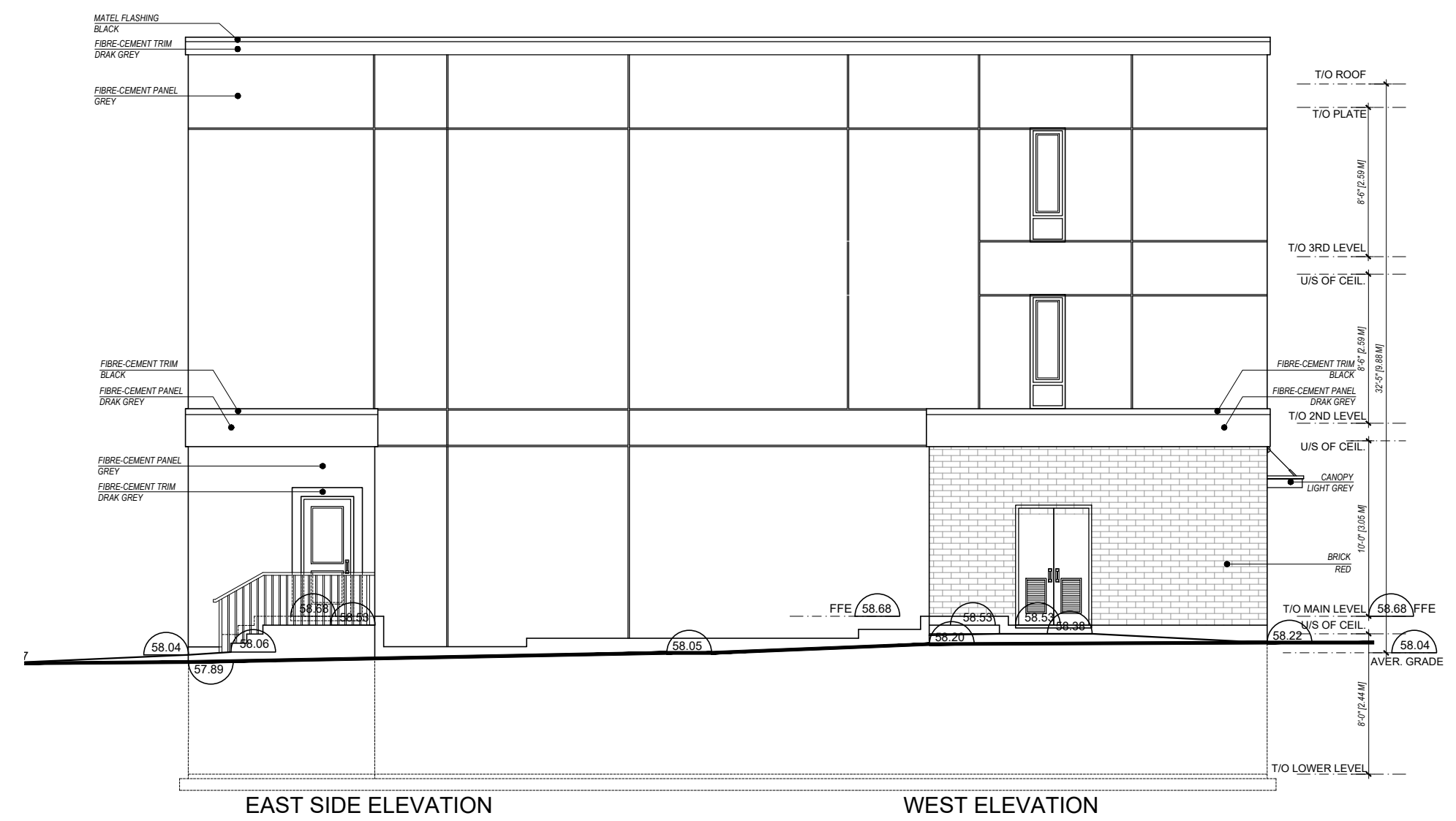
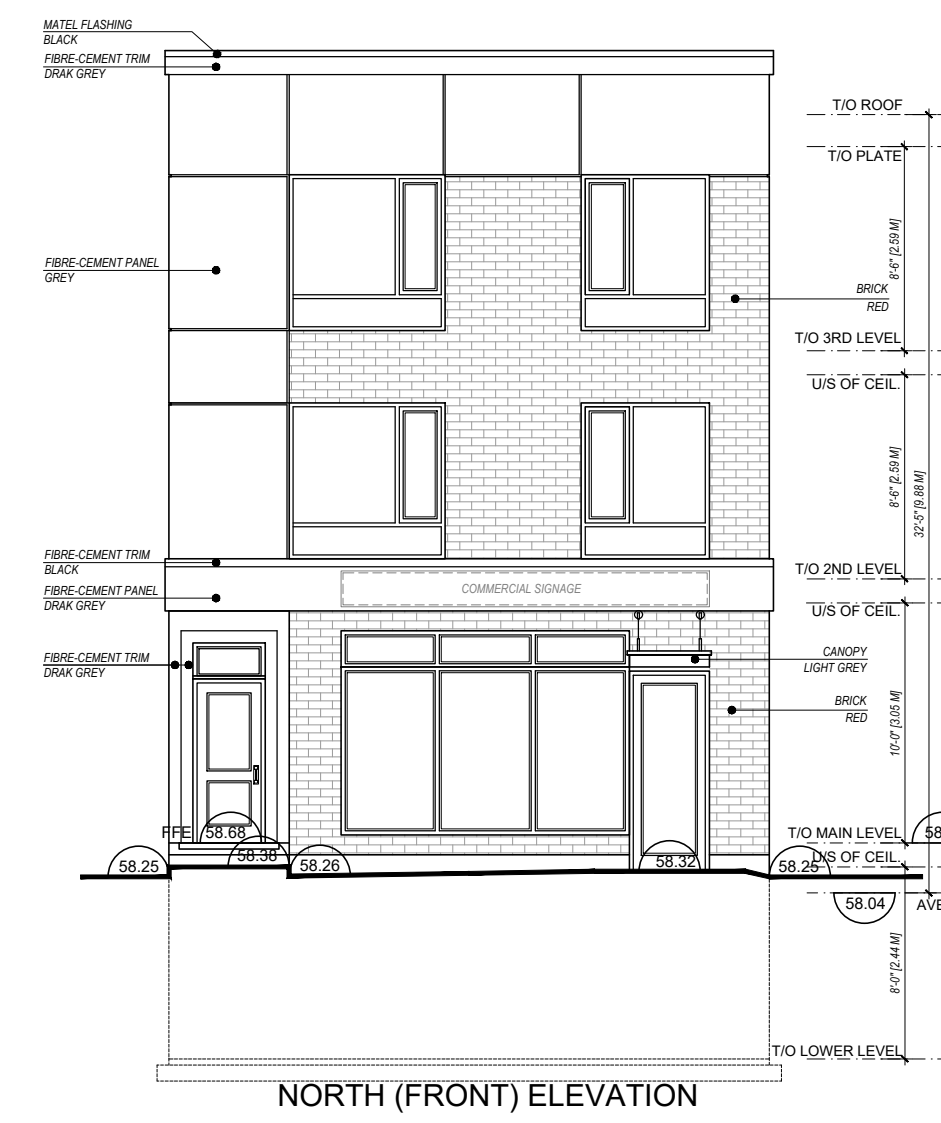
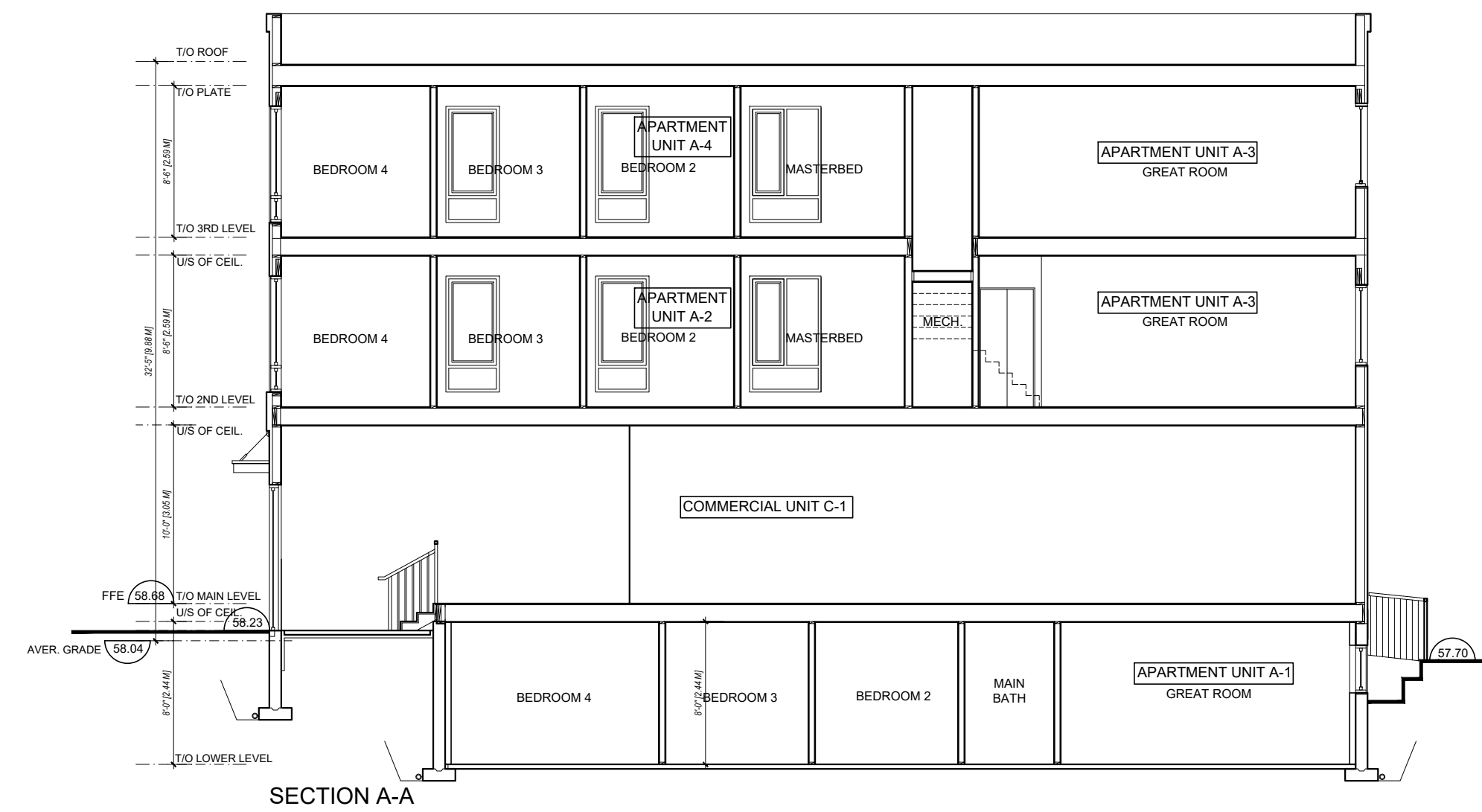
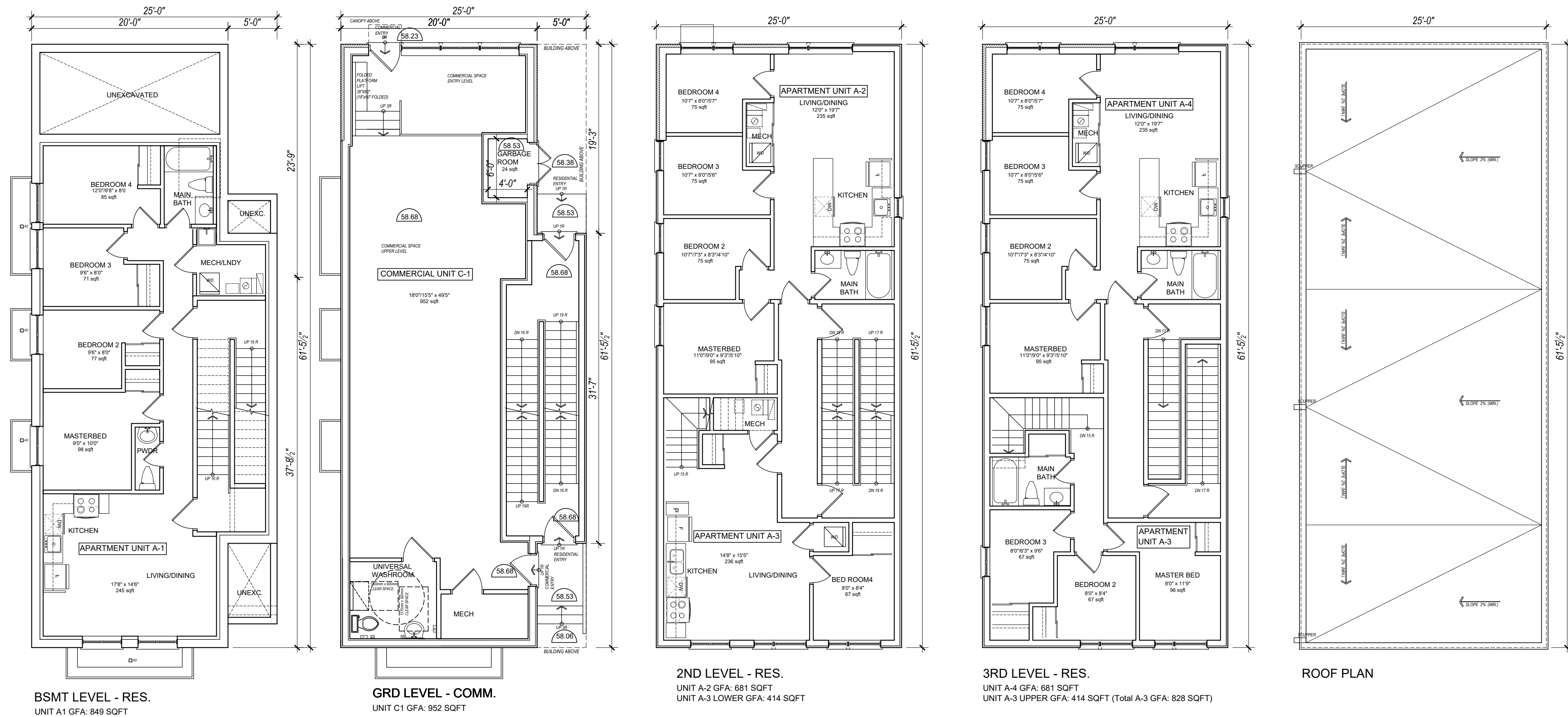
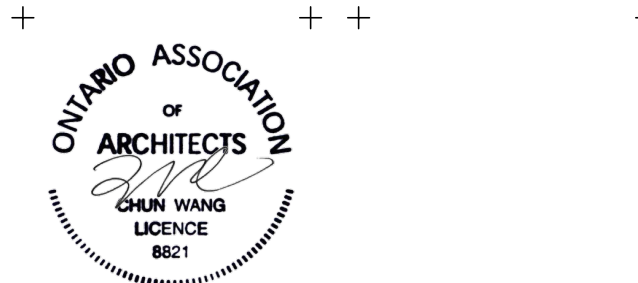

DOUGLAS JAMES, MCIP, RPP
MANAGER, DEVELOPMENT REVIEW - CENTRAL
PLANNING, INFRASTRUCTURE & ECONOMIC
DEVELOPMENT DEPARTMENT, CITY OF OTTAWA

APPROVED
By Jamesdo at 9:17 am, Oct 07, 2019



All drawings are the property of the Architect and must be returned upon request.
Contractor shall check all dimensions and report any discrepancies to the Architect before proceeding with the work.
The contractor and/or engineer shall verify all footing elevations and soil bearing capacity prior to excavation and the commencement of work.
DO NOT SCALE DRAWINGS

CW	5	SEP 18, 2019	ISSUED FOR SITE PLAN RE-SUBMISSION
CW	4	AUG 22, 2019	ISSUED FOR SITE PLAN RE-SUBMISSION
CW	3	JUN 26, 2019	ISSUED FOR SITE PLAN RE-SUBMISSION
CW	2	MAY 28, 2019	ISSUED FOR SITE PLAN RE-SUBMISSION
CW	1	MAR 13, 2019	ISSUED FOR SITE PLAN RE-SUBMISSION



owner
ABCG Properties Inc
600 Du Buisson Crescent
Ottawa, ON K4A 3A2

project
SOMERSET MIXED-USE
296 SOMERSET STREET EAST
OTTAWA, ON, K1N 6W1

drawing
FLOOR PLANS
ELEVATIONS & SECTION

scale 1/8" = 1'-0"
date FEB 10TH, 2019
drawn CW
chk'd CW

A-1

project number 1906