

DRAWING LIST	
E001	LEGEND, DRAWINGS LIST, AND GENERAL NOTES
ED001	ELECTRICAL SITE PLAN – DEMOLITION
E002A	ELECTRICAL SITE PLAN – NEW WORK
E002B	ELECTRICAL SITE PLAN DETAILS AND PHOTOMETRICS
E002C	ELECTRICAL MCLD LIGHTING FIXTURE SCHEDULE
E003	RESERVED (NOT INCLUDED)
E004	EQUIPMENT SCHEDULE (NOT INCLUDED)
E100	ELECTRICAL LEVEL 0 LIGHTING LAYOUT (NOT INCLUDED)
E101	ELECTRICAL LEVEL 1 LIGHTING LAYOUT (NOT INCLUDED)
E101A	ELECTRICAL LEVEL 1 LIGHTING LAYOUT (CONTINUED) (NOT INCLUDED)
E102	ELECTRICAL LEVEL 2 LIGHTING LAYOUT (NOT INCLUDED)
E102A	ELECTRICAL LEVEL 2 LIGHTING LAYOUT (CONTINUED) (NOT INCLUDED)
E103	ELECTRICAL MEZZANINE LIGHTING LAYOUT (NOT INCLUDED)
E200	ELECTRICAL LEVEL 0 POWER LAYOUT (NOT INCLUDED)
E201	ELECTRICAL LEVEL 1 POWER LAYOUT (NOT INCLUDED)
E201A	ELECTRICAL LEVEL 1 POWER LAYOUT (CONTINUED) (NOT INCLUDED)
E202	ELECTRICAL LEVEL 2 POWER LAYOUT (NOT INCLUDED)
E202A	ELECTRICAL LEVEL 2 POWER (CONTINUED) (NOT INCLUDED)
E203	ELECTRICAL MEZZANINE POWER LAYOUT (NOT INCLUDED)
E204	ELECTRICAL ROOF PLANS (NOT INCLUDED)
E300	ELECTRICAL LEVEL 0 POWER DISTRIBUTION LAYOUT AND ROUTING (NOT INCLUDED)
E301	ELECTRICAL LEVEL 1 POWER DISTRIBUTION LAYOUT AND ROUTING (NOT INCLUDED)
E301A	ELECTRICAL LEVEL 1 POWER DISTRIBUTION LAYOUT AND ROUTING (CONTINUED) (NOT INCLUDED)
E302	ELECTRICAL LEVEL 2 POWER DISTRIBUTION LAYOUT AND ROUTING (NOT INCLUDED)
E302A	ELECTRICAL LEVEL 2 POWER DISTRIBUTION LAYOUT AND ROUTING (CONTINUED) (NOT INCLUDED)
E303	ELECTRICAL MEZZANNINE POWER DISTRIBUTION LAYOUT AND ROUTING (NOT INCLUDED)
E400	SINGLE LINE DIAGRAM (NOT INCLUDED)
E400A	SINGLE LINE DIAGRAM CONTINUED (NOT INCLUDED)
E500	DETAILS (NOT INCLUDED)

GENERAL NOTES:	
A. UNLESS OTHERWISE NOTED, ELECTRICAL MATERIALS FOR REMOVAL BECOME THE CONTRACTOR'S PROPERTY AND SHALL BE TAKEN FROM SITE AND DISPOSED OF IN ACCORDANCE WITH PROVINCIAL STANDARDS.	
B. MAINTAIN EXISTING REMAINING CIRCUITS (I.E. EXISTING SITE LIGHTING) AND ALL SYSTEMS WHICH PASS THROUGH ALL AREAS OF CONSTRUCTION. PROVIDE NECESSARY MATERIALS TO MAINTAIN SYSTEMS THAT ARE REMAINING. ENSURE ALL MATERIALS ARE CONCEALED WHEN CONSTRUCTION IS COMPLETED.	
C. REINSTATE ALL EXISTING SYSTEMS REMAINING IMMEDIATELY THAT ARE INTERRUPTED DURING CONSTRUCTION. PROVIDE MATERIALS AS NECESSARY TO MAINTAIN SYSTEMS THAT ARE INTERRUPTED.	
D. COORDINATE ELECTRICAL DEMOLITION, DISCONNECTIONS AND REMOVALS (I.E. EXISTING SITE LIGHTING) REQUIREMENTS FOR EQUIPMENT BEING REMOVED BY OTHER TRADES.	
E. JUNCTION BOX COVERS TO HAVE CIRCUITS IDENTIFIED IN INDELIBLE BLACK INK.	
F. ELECTRICAL CONTRACTOR SHALL TEST AND ENSURE ALL EQUIPMENT IS WORKING AT THE END OF EACH DAY.	
G. ELECTRICAL SHALL CONFIRM EXACT BREAKER/FUSE SIZES ON SITE.	
H. ALL WORK TO BE PERFORMED DURING SCHOOL HOURS. ELECTRICAL CONTRACTOR SHALL ALLOW FOR WEEKEND AND AFTER HOURS WORK PERIODS, WHEN REQUESTED BY CEPEO.	
I. ELECTRICAL SHALL CONFIRM THE EXISTING AND NEW REQUIREMENTS TO ENSURE CORRECT RATINGS AND SYSTEM SIZES, BEFORE PLACING ORDER.	
J. COORDINATE WITH ALGONQUIN COLLEGE FOR ANY/ALL SYSTEM SHUTDOWNS DURING THE DEMOLITION OR CONSTRUCTION PHASE OF CONTRACT FOR COORDINATION PURPOSES. ALLOW FOR ALL REQUIRED SHUTDOWNS TO BE PERFORMED OUTSIDE OF NORMAL SCHOOL HOURS. SHUTDOWN OF SYSTEM TO BE RE-ENERGIZED AND FULLY OPERATIONAL AT THE END OF SAME DAY'S WORK SHIFT.	
K. THESE DRAWINGS INDICATE KNOWN CONDITIONS AND MAY NOT INDICATE ALL DEMOLITION REQUIREMENTS. THE ELECTRICAL CONTRACTOR SHALL VISIT THE SITE DURING THE TENDER PERIOD TO BECOME FAMILIAR WITH THE SITE.	
L. PROVIDE ALL TEMPORARY SERVICES THROUGHOUT DEMOLITION AND CONSTRUCTION OF CONTRACT AREA. THESE TEMPORARY SERVICES INCLUDE POWER, LIGHTING AND FIRE ALARM COVERAGE WHERE REQUIRED. ALL TEMPORARY SYSTEMS ARE TO BE REMOVED AT THE END OF THE CONTRACT.	
M. PROVIDE CUTTING, AND PATCHING OF CEMENTED/ASPHALTED AREAS AND OTHER SURFACES AS REQUIRED TO FIT THE ELECTRICAL LIGHTING STANDARDS.	

SENSOR SWITCH SCHEDULE					
TYPE	MANUFACTURER	CATALOGUE NUMBER	LOCATION	MOUNTING	REMARKS
	WALL MOUNTED OCCUPANCY SENSOR DIMMER SWITCH	EQUAL TO WATTSTOPPER DW-311	SEE PLAN	WALL	DUAL TECHNOLOGY, PASSIVE INFRARED/ULTRASONIC C/W PUSHBUTTON OVERRIDE.
	OCCUPANCY SENSOR	EQUAL TO WATTSTOPPER LMDC-100	SEE PLAN	CEILING RECESSED	DIGITAL SENSOR WITH LCD DISPLAY AND PROGRAMMING PUSHBUTTON
	DAYLIGHT HARVESTING SENSOR	EQUAL TO WATTSTOPPER LMLS-500	SEE PLAN	CEILING RECESSED	DAYLIGHT RESPONSIVE ON/OFF, BI-LEVEL TR-LEVEL OR DIMMING CONTROL FOR UP TO 3 LIGHTING ZONES
	DIMMER SWITCH	EQUAL TO WATTSTOPPER LMDM-101	SEE PLAN	WALL	DIMMING WALL SWITCH W/ LED INDICATOR AND IR COMMUNICATIONS
	SCENE SELECTOR SWITCH	EQUAL TO WATTSTOPPER LMSW-105	SEE PLAN	WALL	SCENE SWITCH
	DIMMING CONTROLLER	EQUAL TO WATTSTOPPER LMRC-112	SEE PLAN	CEILING	TO BE INSTALLED IN CEILING OR REMOTE

POWER	
SYMBOL	DESCRIPTION
	SINGLE RECEPTACLE, TYPE AS INDICATED
	SINGLE RECEPTACLE, 120V, 20A
	QUADRAPLEX RECEPTACLE UNDER COMMON COVERPLATE 120V, 15A
	DUPLEX RECEPTACLE, 120V, 15A
	DUPLEX RECEPTACLE – OVER COUNTER, 120V, 15A
	DUPLEX RECEPTACLE, GFI TYPE
	DUPLEX RECEPTACLE – OVER COUNTER, GFI TYPE
	SPECIAL RECEPTACLE, VOLT & AMP AS INDICATED
	SPECIAL RECEPTACLE – OVER COUNTER, VOLT & AMP AS INDICATED
	DIRECT CONNECTION TO EQUIPMENT
	DIRECT CONNECTION TO EQUIPMENT – OVER COUNTER
	CLOCK (D=DOUBLE FACE CLOCK)
	OUTLET BOX
	RECESSED PANEL
	SURFACE PANEL
	DISCONNECT SWITCH
	MANUAL MOTOR STARTER
	MAGNETIC MOTOR STARTER
	COMBINATION MAGNETIC STARTER
	HAND DRYER
	SPLITTER
	TRANSFORMER
	ELECTRIC FORCE FLOW HEATER
	CONDUIT SLEEVE

COMMUNICATIONS	
SYMBOL	DESCRIPTION
	VOICE OUTLET
	VOICE OUTLET – OVER COUNTER
	VOICE OUTLET – WALL MOUNTED
	DATA OUTLET
	DATA OUTLET – OVER COUNTER
	SPEAKER, CEILING MOUNTED
	INTERCOM OUTLET
	CABLEVISION OUTLET
	WASHROOM ASSIST PUSHBUTTON OR PULLCORD
	WASHROOM ASSIST DOME LIGHT
NOTE: ELECTRICAL CONTRACTOR TO PROVIDE CONDUITS AND BACKBOXES ONLY. CABLING AND PROVISION OF COMMUNICATIONS DEVICES TO BE BY CEPEO.	

LIGHTING	
SYMBOL	DESCRIPTION
	LIGHTING FIXTURE, CEILING MOUNTED
	LIGHTING FIXTURE, CEILING MOUNTED
	LIGHTING FIXTURE WALL MOUNTED
	LIGHT STANDARD – POLE MOUNTED
	EXIT SIGN c/w DIRECTIONAL ARROWS, CEILING MOUNTED
	EXIT SIGN c/w DIRECTIONAL ARROWS, WALL MOUNTED
	EMERGENCY BATTERY PACK c/w HEADS AS INDICATED
	REMOTE SINGLE/DOUBLE EM LTG HEADS, CEILING MTD
	REMOTE SINGLE/DOUBLE EM LTG HEADS, WALL MTD

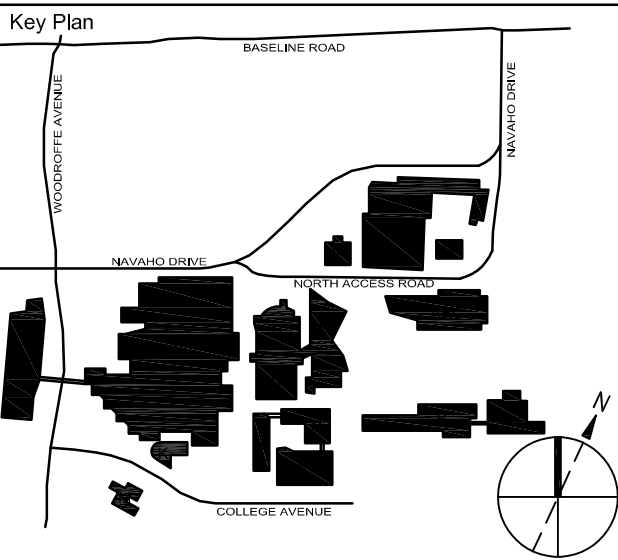
FIRE ALARM	
SYMBOL	DESCRIPTION
	PULL STATION, INSTALLED AT 47.25" (1200mm) A.F.F.
	FIRE ALARM BELL, INSTALLED AT 8' A.F.F.
	FIRE ALARM MINI-HORN, INSTALLED AT 8' A.F.F.
	WALL MOUNTED STROBE LIGHT, INSTALLED AT 8' A.F.F.
	SMOKE DETECTOR
	COMBINATION SMOKE/HEAT DETECTOR 57°C RATE OF RISE
	SMOKE ALARM
	FIRE ALARM MAGNETIC DOOR HOLDER (ALL EXISTING TO BE DEMOLISHED)
	FIRE ALARM ANNUNCIATOR
	FIRE ALARM CONTROL PANEL
	COMBINATION HORN STROBE LIGHT
	DUCT SMOKE DETECTOR

SECURITY	
SYMBOL	DESCRIPTION
	SECURITY DOOR CONTACT
	SECURITY CCTV CAMERA
	CARD READER
	ELECTRIC STRIKE
NOTE: ELECTRICAL CONTRACTOR TO PROVIDE CONDUITS AND BACKBOXES ONLY. CABLING AND PROVISION OF COMMUNICATIONS DEVICES TO BE BY CEPEO CONTRACTOR.	

ABBREVIATIONS	
SYMBOL	DESCRIPTION
C	CEILING MOUNTED
H	MOUNTED AT HIGH LEVEL
S	SURFACE MOUNTED
ST	STOVE TOP
RG	RANGE
MW	MICROWAVE
DW	DISHWASHER
DR	DRYER
TP	TAMPERPROOF
WS	WASHER
CF	MOUNTED FLUSH ON TOP OF COUNTER
F	FLOOR MOUNTED
W	WALL MOUNTED

SWITCHING	
SYMBOL	DESCRIPTION
	SINGLE POLE TOGGLE SWITCH
	THREE-WAY TOGGLE SWITCH
	GANGED SWITCHES
	MOTION SENSOR SWITCH, WALL TYPE
	OCCUPANCY SENSOR, CEILING MOUNTED

LINEWORK LEGEND:	
SYMBOL	DESCRIPTION
	SYMBOLS WITH SUFFIX 'N' INDICATES EXISTING EQUIPMENT OR OUTLETS REMOVED & RE-INSTALLED IN NEW LOCATIONS
	SYMBOLS WITH SUFFIX 'RR' INDICATES EXISTING EQUIPMENT OR OUTLETS TO BE REMOVED & RE-INSTALLED IN SAME LOCATIONS
	SYMBOLS WITH SUFFIX 'R' INDICATES EXISTING EQUIPMENT OR OUTLETS TO BE REMOVED & RELOCATED IN NEW LOCATIONS
	EXCEPT AS NOTED OTHERWISE, ALL EXISTING EQUIPMENT TO REMAIN IS SHOWN IN THIN SOLID LINES.
	EXCEPT AS NOTED OTHERWISE, ALL EXISTING EQUIPMENT TO BE DEMOLISHED OR RELOCATED IS SHOWN IN THICK DASHED LINES. RELOCATED ITEMS ARE WITH SUFFIX 'R', 'RR' OR 'N'
	EXCEPT AS NOTED OTHERWISE, ALL NEW EQUIPMENT IS SHOWN IN THICK SOLID LINES.
	EXCEPT AS NOTED OTHERWISE, ALL NEW EQUIPMENT SHOWN IN THICK SOLID LINES WITH "R" INDICATES RELOCATED.



No.	Description	Date
1	ISSUED FOR SITE PLAN APPROVAL	2019/06/24
2	ISSUED FOR FOUNDATION PERMIT	2019/08/20
3	RE-ISSUED FOR SITE PLAN APPROVAL	2019/09/24

Drawn by: J.A. Reviewed by: D.B.
Project No: 191-01517-00

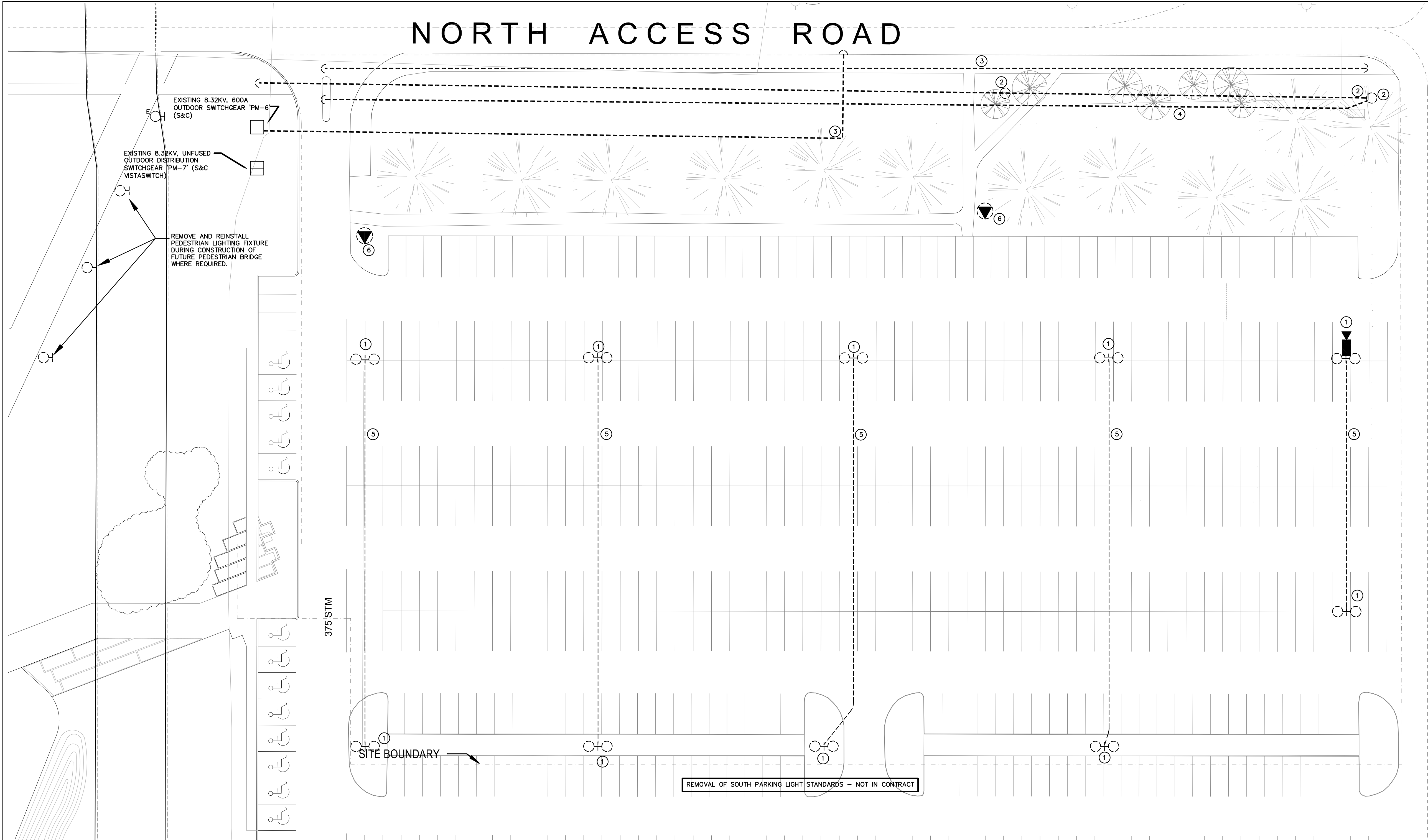
Sheet Title

LEGEND, DRAWING LIST AND GENERAL NOTES

Original drawing is A1. Do not scale contents of this drawing.

Sheet Number

E001



1 ELECTRICAL SITE PLAN - DEMOLITION
ED001 1:300

- KEYED NOTES:
- 1. REMOVE EXISTING LIGHT STANDARD INCLUDING ASSOCIATED LUMINAIRE, POLE, CONCRETE BOLLARD, CONDUIT AND BRANCH WIRING. MAINTAIN CONTINUITY OF DOWNSTREAM LIGHT STANDARDS THAT ARE EXISTING TO REMAIN WHICH MAY BE FED FROM SAME CIRCUIT AND INCLUDE FOR REWORK OF EXISTING SITE LIGHTING CIRCUITRY AND BRANCH DISTRIBUTION. TURN OVER LUMINAIRE AND POLE TO ALGONQUIN COLLEGE FOR FUTURE REUSE.
 - 2. REMOVE EXISTING HYDRO POLES INCLUDING ASSOCIATED WOODEN POLES, 8.32 KV POWER LINES, POLE MOUNTED TRANSFORMERS, BELL/ROGERS TELECOMMUNICATION CABLING AND MAKE SAFE. COORDINATE WORK WITH ALGONQUIN COLLEGE AND HYDRO OTTAWA.
 - 3. REMOVE EXISTING BURIED ELECTRICAL SERVICES INCLUDING AND REROUTE TO ACCOMMODATE THE INSTALLATION OF NEW ELECTRICAL SITE SERVICES. COORDINATE WORK WITH ALGONQUIN COLLEGE AND HYDRO OTTAWA.
 - 4. REMOVE EXISTING BURIED TELECOMMUNICATION SERVICES INCLUDING BELL/ROGERS AND REROUTE TO ACCOMMODATE THE INSTALLATION OF NEW ELECTRICAL SITE SERVICES. COORDINATE WORK WITH ALGONQUIN COLLEGE AND TELECOMMUNICATION SERVICE PROVIDER.
 - 5. REMOVE EXISTING BURIED PARKING LIGHTING BRANCH FEEDERS AND MODIFY BURIED ELECTRICAL SERVICES AS REQUIRED TO MAINTAIN DOWNSTREAM CONTINUITY OF OTHER PARKING LIGHTING CIRCUITS. RETAIN EXISTING PARKING LIGHTING CIRCUITRY AND EXTEND TO NEW PARKING LIGHTING LOCATIONS.
 - 6. REMOVE PARKING PAY STATION POWER, FEEDERS, AND TELECOMMUNICATION CONDUIT INFRASTRUCTURE TO ACCOMMODATE NEW BUILDING LOCATION. TURN OVER PAY STATIONS TO ALGONQUIN COLLEGE FOR FUTURE REUSE.

SITE VERIFY EXISTING ELECTRICAL AND TELECOMMUNICATION SERVICES WHICH MAY INTERFERE WITH THE CONSTRUCTION OF THE NEW BUILDING. COORDINATE WITH OTHER SITE SERVICES AND REROUTE/REINSTATE ACCORDINGLY. REVIEW ALL WORK WITH ALGONQUIN COLLEGE PRIOR TO COMMENCEMENT.



HOK Architects Corporation
205 Catherine Street, Suite 101
Ottawa, Ontario K2P 1C3 Canada
t+1 613 226 9650 f+1 613 226 9656

All reproduction & intellectual property rights reserved © 2019

In Association with
WSP
STRUCTURAL
2611 Queensview Drive, Suite 300
Ottawa, ON, K2B 8K2

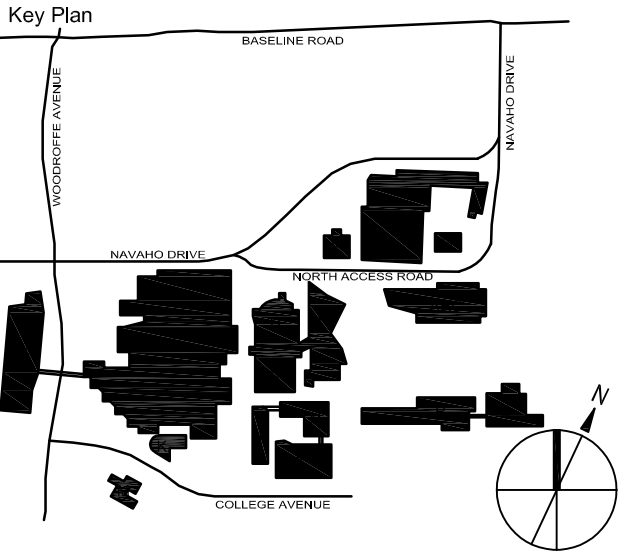
WSP
MECHANICAL
2611 Queensview Drive, Suite 300
Ottawa, ON, K2B 8K2

WSP
ELECTRICAL
2611 Queensview Drive, Suite 300
Ottawa, ON, K2B 8K2

WSP
CIVIL
2611 Queensview Drive, Suite 300
Ottawa, ON, K2B 8K2

CSW Landscape Architects
LANDSCAPE
319 McRae Avenue, Suite 502
Ottawa, ON, K1Z 0B9

WSP
SUSTAINABILITY
2611 Queensview Drive, Suite 300
Ottawa, ON, K2B 8K2



Professional Seals



No.	Description	Date
1	ISSUED FOR SITE PLAN APPROVAL	2019/08/24
2	ISSUED FOR FOUNDATION PERMIT	2019/08/20
3	RE-ISSUED FOR SITE PLAN APPROVAL	2019/09/24

Drawn by: J.A. Reviewed by: D.B.
Project No: 191-01517-00

Sheet Title
ELECTRICAL
SITE PLAN
- DEMOLITION

Original drawing is A1. Do not scale contents of this drawing.

Sheet Number

ED001

1

E002A 1:300

ELECTRICAL SITE PLAN - NEW WORK

ATHLETICS AND RECREATION CENTRE (ARC)
1385 WOODROFFE AVENUE, BUILDING 'X'

MEASURING POINTS AND LIGHTING LEVELS (PHOTOMETRIC DATA) IDENTIFIED ON THIS DRAWING ASSOCIATED WITH LIGHT FIXTURE TYPES: L1 - L5 ONLY. REFER TO WSP LIGHTING FIXTURE SCHEDULE ON DRAWING E002B FOR DETAILS.

MEASURING POINTS AND LIGHTING LEVELS (PHOTOMETRIC DATA) FOR DECORATIVE/LANDSCAPE LIGHT FIXTURE TYPES: F-01C F-03, J-02, J-03A, J-03B, J-03C, J-03E J-04, J-05A, J-05B AND J-05C ARE NOT IDENTIFIED ON THIS DRAWING. LIGHT FIXTURE LOCATIONS, MOUNTING DETAIL AND PHOTOMETRIC DATA PROVIDED BY MCLD. REFER TO MCLD LIGHTING FIXTURE SCHEDULE ON DRAWING E002C FOR DETAILS. LIGHT FIXTURES TO BE CONTROLLED BY PROGRAMMABLE LIGHTING CONTROL SYSTEM AND TO BE 'OFF' FROM 12AM TO 6AM.

SITE VERIFY EXISTING ELECTRICAL AND TELECOMMUNICATION SERVICES WHICH MAY INTERFERE WITH THE CONSTRUCTION OF THE NEW BUILDING. COORDINATE WITH OTHER SITE SERVICES AND REROUTE/REINSTATE ACCORDINGLY. REVIEW ALL WORK WITH ALGONQUIN COLLEGE PRIOR TO COMMENCEMENT.

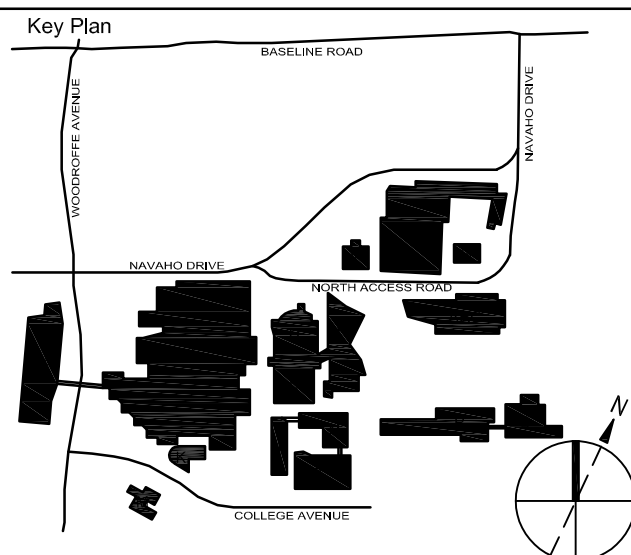
KEYED NOTES:

- CONNECT NEW DIRECT BURIED 8.32 KV TECK CABLE TO LOAD SIDE OF EXISTING PM-7 SPARE SWITCH. INTERLOCK EXISTING OPERATING HANDLE WITH NEW TRANSFORMER FUSE ACCESS DOOR BY INSTALLING AN "AFTER-MARKET" KEY INTERLOCK KIT (CUA-1352 SERIES). TRANSFORMER FUSE ACCESS DOOR SHALL BE LOCKED "CLOSED" UNTIL KEY IS RETRIEVED FROM UPSTREAM SWITCH BY ENSURING THE VISTA SWITCH IS LOCKED "GROUNDED" OR "OPEN".
- PROVIDE SUITABLE CONCRETE-BASED PROTECTIVE BOLLARDS.
- PROVIDE BURIED GROUNDING LOOP/GRID AROUND NEW TRANSFORMER CONCRETE PAD C/W MINIMUM FOUR (4) GROUNDING RODS AND CONNECT WITH MINIMUM 3/0 STRANDED BARE COPPER AND TERMINATE IN TRANSFORMER HO/XO GROUNDING BAR/LUGS. BOND TO METALLIC OBJECTS NEARBY INCLUDING PROTECTIVE BOLLARDS.
- SECONDARY CONCRETE ENCASED DUCT BANK TO BE ROUTED UNDER PEDESTRIAN SIDEWALK. COORDINATE EXACT ROUTING WITH EXISTING SERVICES. DUCT BANK IS A LONG RUN, PROVIDE PRE-CAST PULLING CHAMBER(S) WITH MANHOLE(S) LOCATED TO FACILITATE THE CABLE PULL.
- TRANSITION CONDUITS FROM INCOMING DUCT BANK AND EMBED IN FLOOR SLAB TO STUB-UP INTO MAIN ENTRANCE SWITCHBOARD. WHERE CONDUITS ENTER BELOW SLAB AND INTO BASEMENT LEVEL, EXTEND CONCRETE ENCASUREMENT INTO MAIN ELECTRICAL ROOM. ENSURE CONDUIT STUB-UP IS METALLIC. COORDINATE INSTALLATION OF INCOMING ELECTRICAL SERVICE DUCT BANK WITH THE BUILDING FOUNDATION AND GENERAL CONTRACTOR PRIOR TO ROUGH-IN.
- RETAIN EXISTING PARKING LIGHTING CIRCUITS USED BY NORTH PARKING LOT LIGHT STANDARDS THAT WERE REMOVED AND EXTEND TO NEW PARKING LIGHTING LOCATIONS.
- APPROXIMATE ROUTING OF ELECTRICAL SERVICES BETWEEN GENERATOR AND MAIN ELECTRICAL ROOM

ALGONQUIN
COLLEGEAlgonquin
Students'
ASSOCIATIONProject
**ATHLETICS AND
RECREATION CENTRE
(ARC)**Prepared For
**ALGONQUIN STUDENTS'
ASSOCIATION**HOK Architects Corporation
205 Catherine Street, Suite 101
Ottawa, Ontario K2P 1C3 Canada
T+1 613 226 9650 F+1 613 226 9656

All reproduction & intellectual property rights reserved © 2019

In Association with

WSP
STRUCTURAL
2611 Queensview Drive, Suite 300
Ottawa, ON, K2B 8K2WSP
MECHANICAL
2611 Queensview Drive, Suite 300
Ottawa, ON, K2B 8K2WSP
ELECTRICAL
2611 Queensview Drive, Suite 300
Ottawa, ON, K2B 8K2WSP
CIVIL
2611 Queensview Drive, Suite 300
Ottawa, ON, K2B 8K2CSW Landscape Architects
LANDSCAPE
319 McRae Avenue, Suite 502
Ottawa, ON, K1Z 0B9WSP
SUSTAINABILITY
2611 Queensview Drive, Suite 300
Ottawa, ON, K2B 8K2

Professional Seals



No.	Description	Date
1	ISSUED FOR SITE PLAN APPROVAL	2019/06/24
2	ISSUED FOR FOUNDATION PERMIT	2019/08/20
3	RE-ISSUED FOR SITE PLAN APPROVAL	2019/09/24

Drawn by: J.A. Reviewed by: D.B.

Project No: 191-01517-00

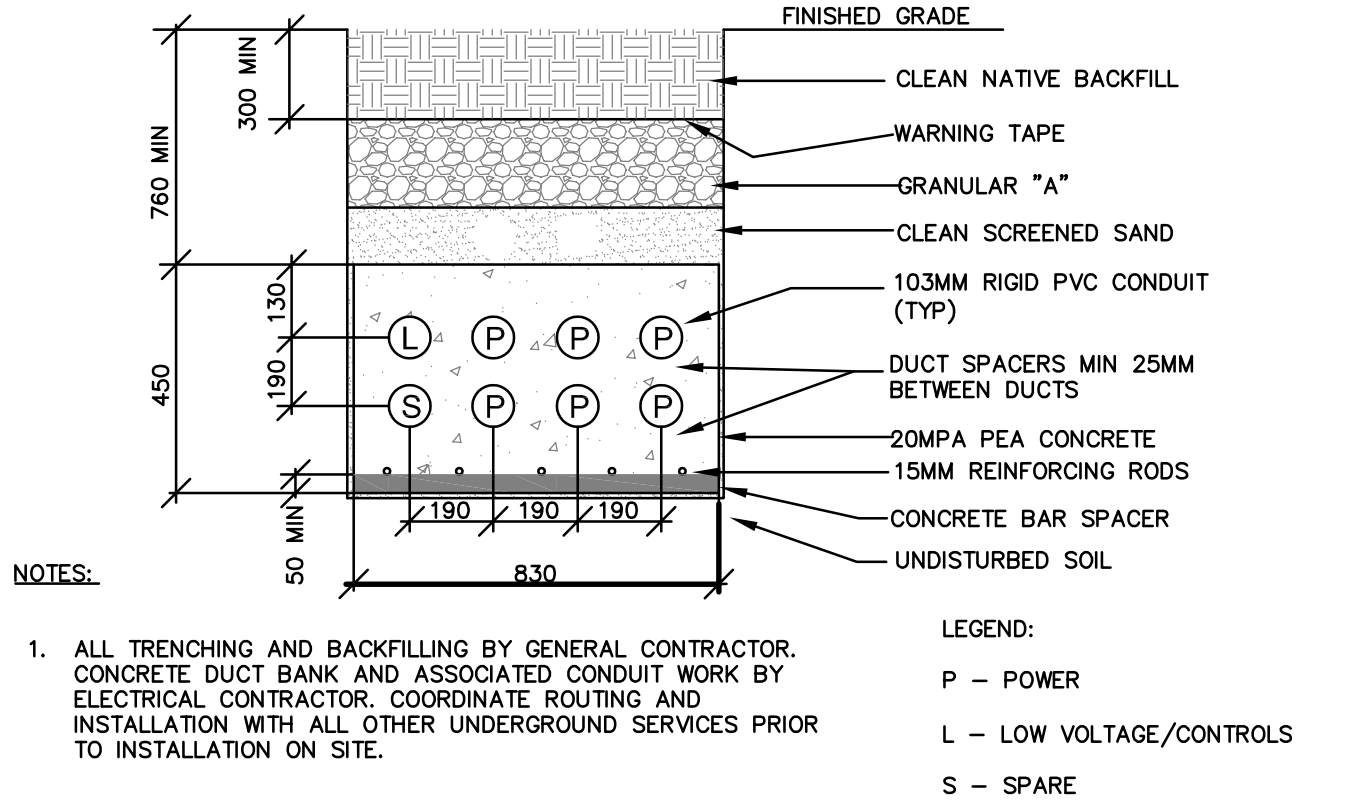
Sheet Title

**ELECTRICAL
SITE PLAN
- NEW WORK**

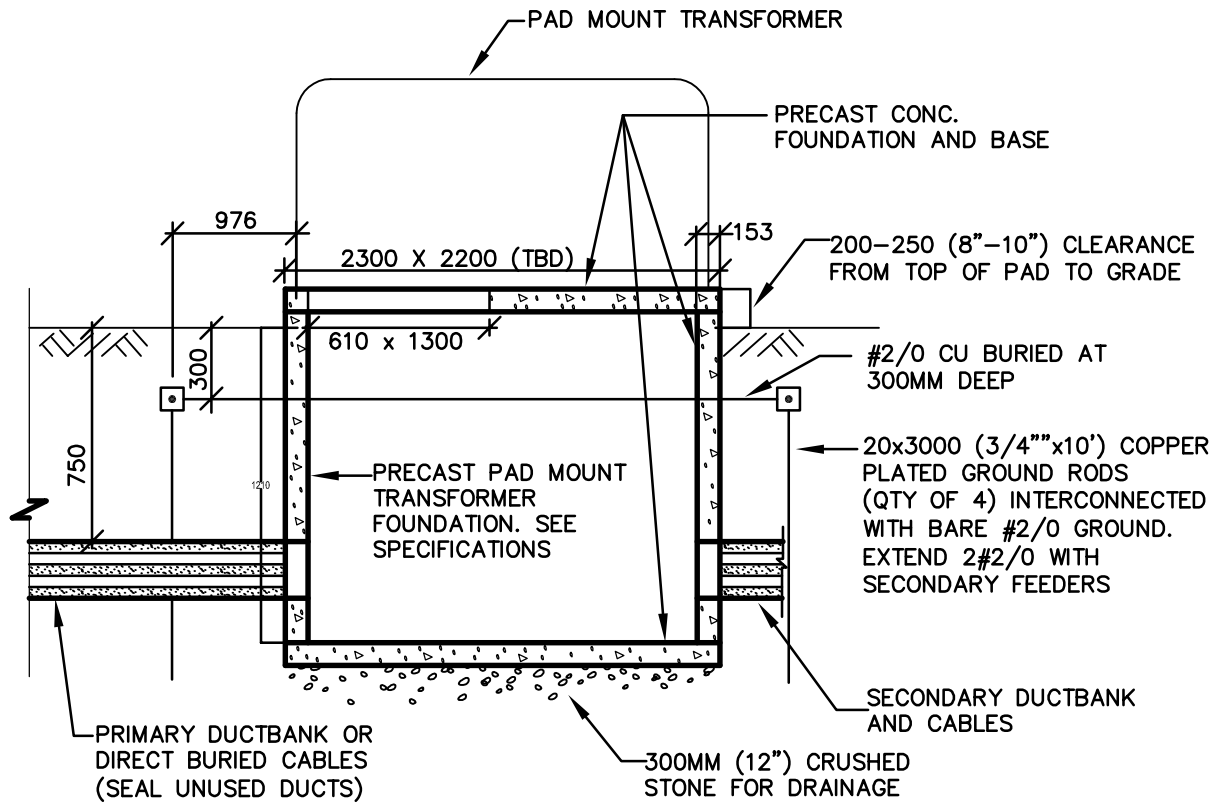
Original drawing is A1. Do not scale contents of this drawing.

Sheet Number

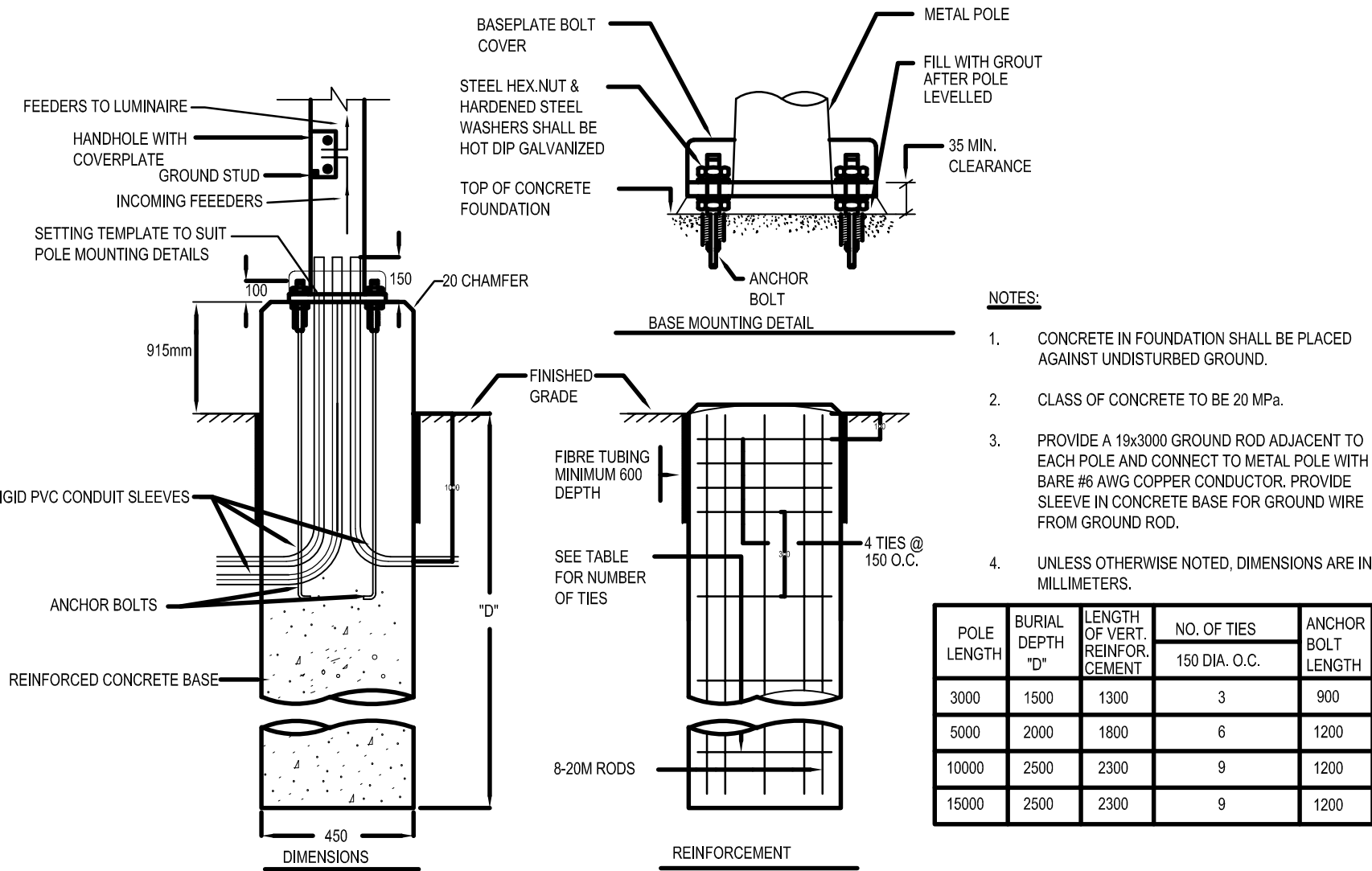
E002A



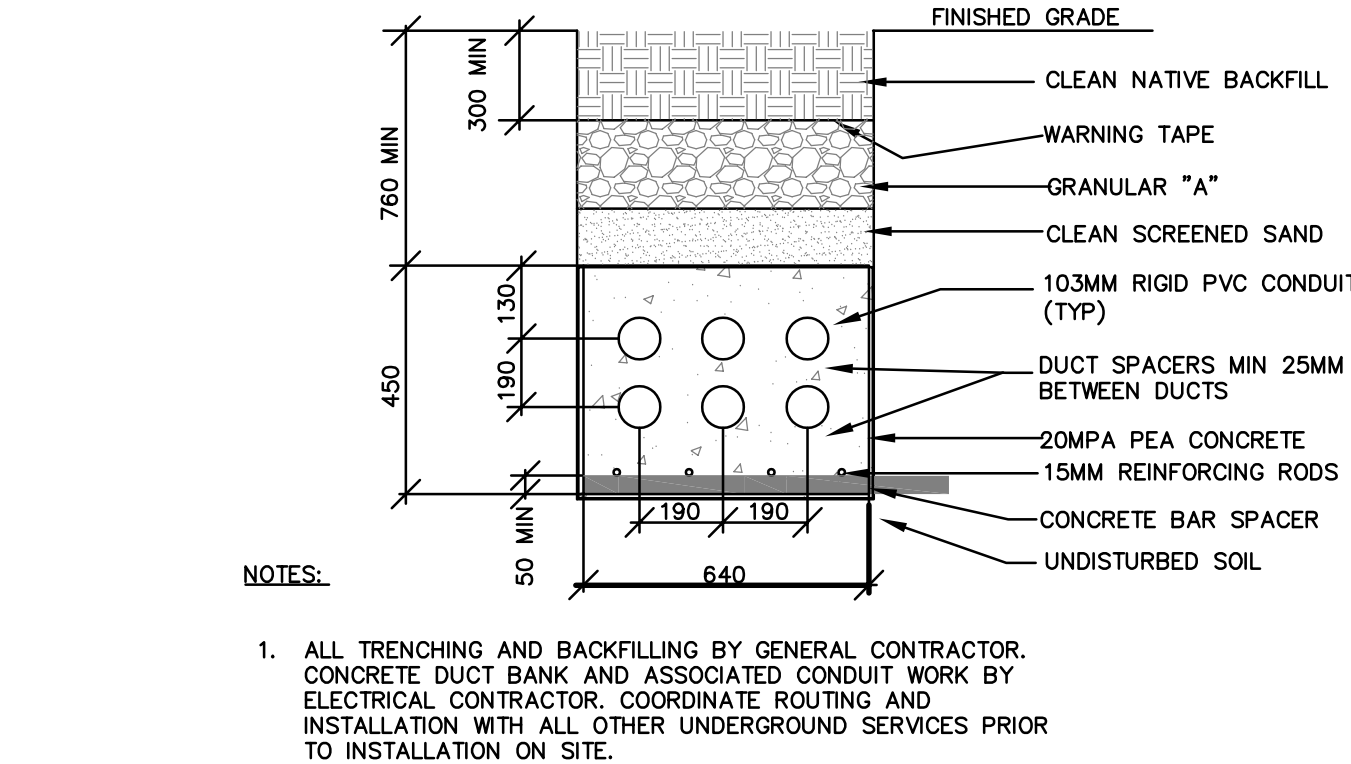
2 SECONDARY DUCTBANK SECTION
E002B N.T.S.



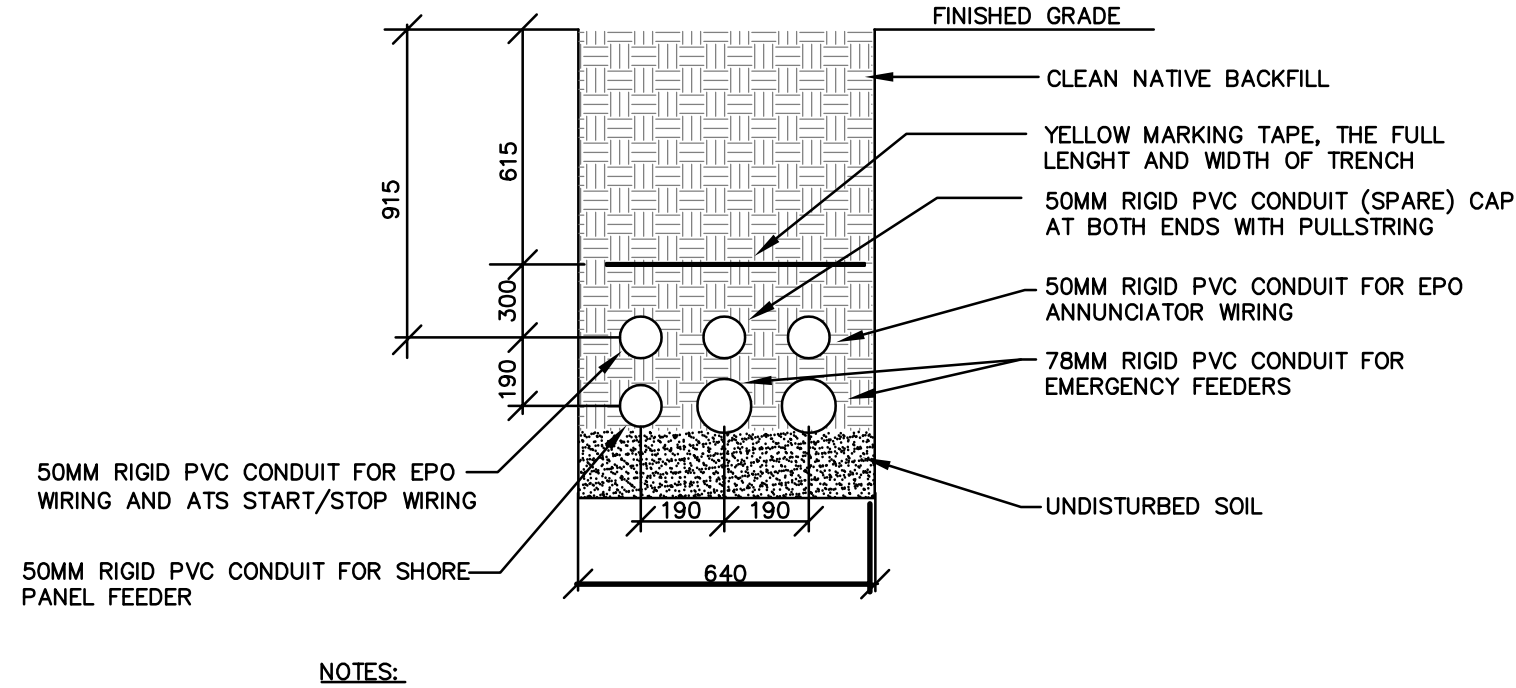
3 PADMOUNT TRANSFORMER DETAIL
E002B N.T.S.



4 LIGHTING STANDARD DETAIL
E002B N.T.S.



5 PRIMARY DUCTBANK DETAIL
E002B N.T.S.



6 DIRECT BURIED CONDUITS BETWEEN GENERATOR RM AND MAIN ELECTRICAL ROOM
E002B N.T.S.

WSP LIGHTING FIXTURE SCHEDULE																			
TYPE	MANUFACTURERMODEL NUMBER	DESCRIPTION	LAMP	WATTAGE	LUMENS	VOLTAGE	COLOUR TEMP CRI	MOUNTING	TYPE	IES DISTRIBUTION	EFFICIENCY	SHIELDING	REFLECTOR	HOUSING	FINISH	BALLAST	DIMENSION	NOTES	REMARKS
L1	SELUX U4 SERIES U4-R3-WD-5G530-40-BK-347-GL SERIES	WALL PACK	LED	28W (TBD)	2811	347	4000K/CRI > 80 (TBD)	SURFACE FACADE @ 10 FEET	DOWNLIGHT	WIDE (TYPE III)	TBD%	TBD	TBD	LOW COPPER MARINE-GRADE ALUMINUM	BLACK - CONFIRM WITH ARCHITECT	INTEGRAL 347V LED DRIVER,	(230mm W X 413mm D)	CUL/CSA LISTED 5YRS WARRANTY ON LED DRIVER AND FIXTURE	-
L2	SELUX U6 SERIES U6-R3-S2-5G700-40-BK-347-GL SERIES	LIGHT STANDARD (BACK TO BACK)	LED	148W (TBD)	15145	347	4000K/CRI > 80 (TBD)	POLE @ 33 FEET	DOWNLIGHT	WIDE (TYPE III)	TBD%	TBD	TBD	LOW COPPER MARINE-GRADE ALUMINUM	BLACK - CONFIRM WITH ARCHITECT	INTEGRAL 347V LED DRIVER,	(350mm W X 613mm D) FOR EACH HEAD	- CUL/CSA LISTED 5YRS WARRANTY ON LED DRIVER AND FIXTURE PROVIDE SUITABLE POLE (TBD)	30' POLE C/W 3" CONCRETE BASE
L3	SELUX MISTELLA MST-R5S-1-5G700-40	LIGHT STANDARD	LED	64W (TBD)	6747	347	4000K/CRI > 80 (TBD)	POLE @ 14 FEET	DOWNLIGHT	SQUARE TYPE V	TBD%	TBD	TBD	BLACK - CONFIRM WITH ARCHITECT	INTEGRAL 347V LED DRIVER,				12' POLE
L4	SELUX U4 SERIES U4-R2-5G350-40-GL	WALL PACK	LED	19W	1935	347	4000K/CRI > 80 (TBD)	SURFACE FACADE @ 10 FEET	DOWNLIGHT	WIDE (TYPE III)	TBD%	TBD	TBD	LOW COPPER MARINE-GRADE ALUMINUM	BLACK - CONFIRM WITH ARCHITECT	INTEGRAL 347V LED DRIVER,	(230mm W X 413mm D)	CUL/CSA LISTED 5YRS WARRANTY ON LED DRIVER AND FIXTURE	-
L5	SELUX U4 SERIES U4-R4-5G530-40-GL	WALL PACK	LED	28W	2745	347	4000K/CRI > 80 (TBD)	SURFACE FACADE @ 16 FEET	DOWNLIGHT	WIDE (TYPE III)	TBD%	TBD	TBD	LOW COPPER MARINE-GRADE ALUMINUM	BLACK - CONFIRM WITH ARCHITECT	INTEGRAL 347V LED DRIVER,	(230mm W X 413mm D)	CUL/CSA LISTED 5YRS WARRANTY ON LED DRIVER AND FIXTURE	-

COORDINATE EXACT LOCATION AND MOUNTING METHOD WITH ARCHITECTURAL AND MCD DRAWINGS. PROVIDE ALL REQUIRED MOUNTING ACCESSORIES.

Calculation Summary							
Label	CalcType	Units	Avg	Max	Min	Avg/Min	Max/Min
Drive Lane	Illuminance	Lux	26.34	42.2	7.3	3.61	5.78
Parking	Illuminance	Lux	19.82	48.1	4.1	4.83	11.73
Parking Sidewalk	Illuminance	Lux	33.31	41.6	6.5	5.12	6.40
Site Boundary Line - Horizontal @ Grade	Illuminance	Lux	0.27	0.6	0.0	N.A.	N.A.
Site Boundary Line - Vertical Values	Illuminance	Lux	0.35	2.0	0.0	N.A.	N.A.
Zone1	Illuminance	Lux	30.87	65.4	6.5	4.75	10.06
Zone2	Illuminance	Lux	34.34	47.5	20.2	1.70	2.35
Zone3	Illuminance	Lux	25.22	58.4	3.8	6.64	15.37
Zone4	Illuminance	Lux	28.59	49.7	3.6	7.94	13.81
Zone5	Illuminance	Lux	14.44	44.3	0.3	48.13	147.67
Zone6	Illuminance	Lux	13.76	45.6	0.1	137.60	456.00
Zone7	Illuminance	Lux	16.85	45.7	2.4	7.02	19.04
Zone8	Illuminance	Lux	21.39	46.1	11.0	1.94	4.19

NOTE: LIGHTING ZONE IS BEING CLASSIFIED AS L23 REFERENCING MODEL LIGHTING ORDINANCE (MLO) USER GUIDE. LUMINAIRES NOTED ARE DARK SKY COMPLIANT AND FULL CUT-OFF WITH NO UP-LIGHTING.

1 LUMINAIRE SCHEDULE AND PHOTOMETRICS
E002B N.T.S.



HOK Architects Corporation
205 Catherine Street, Suite 101
Ottawa, Ontario K2P 1C3 Canada
1+1 613 228 9650 1+1 613 228 9656

All reproduction & intellectual property rights reserved © 2019

In Association with

WSP
STRUCTURAL
2611 Queensview Drive, Suite 300
Ottawa, ON, K2B 8K2

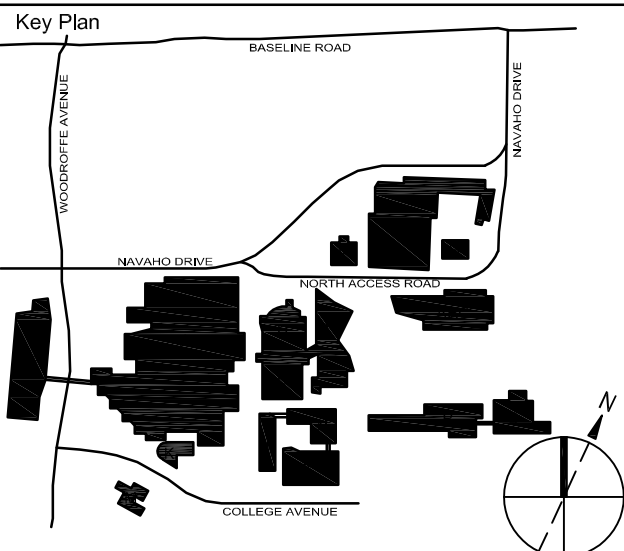
WSP
MECHANICAL
2611 Queensview Drive, Suite 300
Ottawa, ON, K2B 8K2

WSP
ELECTRICAL
2611 Queensview Drive, Suite 300
Ottawa, ON, K2B 8K2

WSP
CIVIL
2611 Queensview Drive, Suite 300
Ottawa, ON, K2B 8K2

CSW Landscape Architects
LANDSCAPE
319 McRae Avenue, Suite 502
Ottawa, ON, K1Z 0B9

WSP
SUSTAINABILITY
2611 Queensview Drive, Suite 300
Ottawa, ON, K2B 8K2



Professional Seals



No.	Description	Date
1	ISSUED FOR SITE PLAN APPROVAL	2019/06/24
2	ISSUED FOR FOUNDATION PERMIT	2019/08/20
3	RE-ISSUED FOR SITE PLAN APPROVAL	2019/09/24

Drawn by: J.A. Reviewed by: D.B.
Project No: 191-01517-00

Sheet Title

ELECTRICAL
SITE PLAN DETAILS
AND PHOTOMETRICS

Original drawing is A1. Do not scale contents of this drawing.

Sheet Number

E002B

