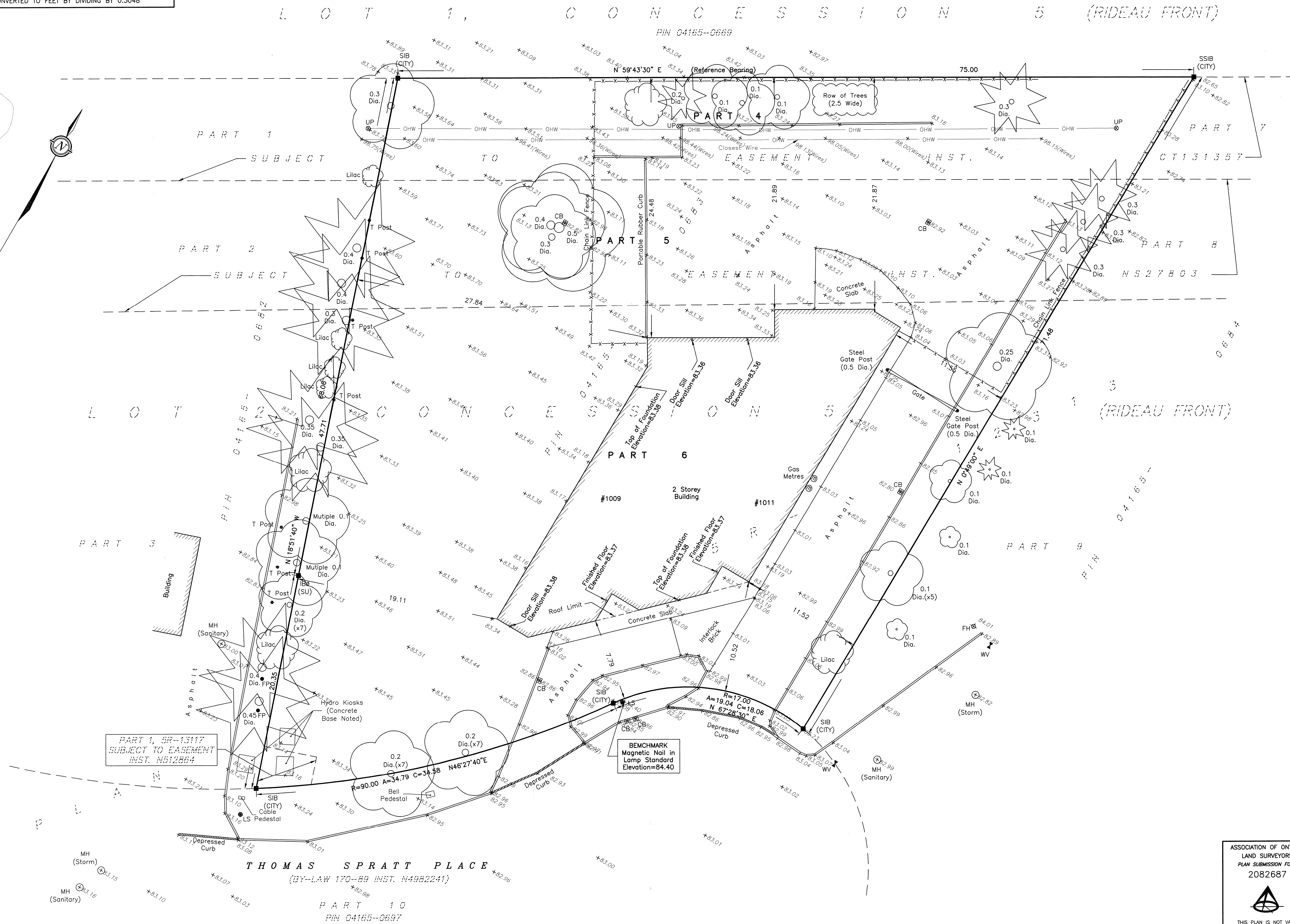


METRIC
DISTANCES AND ELEVATIONS SHOWN ON THIS PLAN ARE IN METRES
AND CAN BE CONVERTED TO FEET BY DIVIDING BY 0.3048



TOPOGRAPHIC SURVEY OF
PART OF LOT 2
CONCESSION 5 (RIDEAU FRONT)
GEOGRAPHIC TOWNSHIP OF GLOUCESTER
CITY OF OTTAWA

SCALE 1 : 200

0 5 10 20 metres

FAIRHALL, MOFFATT & WOODLAND LIMITED
ONTARIO LAND SURVEYORS

ELEVATION NOTES

1. ELEVATIONS SHOWN HEREON ARE REFERRED TO GEODETIC DATUM (CGVD28).
2. ELEVATIONS FOR MANHOLE COVERS AND CATCH BASINS HAVE TO BE INDEPENDENTLY CONFIRMED BEFORE THEY CAN BE ACCEPTED FOR FINAL DESIGN OR CONSTRUCTION PURPOSES.
3. IT IS THE RESPONSIBILITY OF THE USER OF THIS INFORMATION TO VERIFY THAT THE JOB BENCHMARK HAS NOT BEEN ALTERED OR DISTURBED AND THAT ITS RELATIVE ELEVATION AND DESCRIPTION AGREE WITH THE INFORMATION SHOWN ON THIS DRAWING.

UTILITY NOTES

1. THIS DRAWING CANNOT BE ACCEPTED AS ACKNOWLEDGING ANY UNDERGROUND UTILITIES AND IT WILL BE THE RESPONSIBILITY OF THE USER TO CONTACT THE RESPECTIVE UTILITY AUTHORITIES FOR CONFIRMATION OR LOCATION.
2. BEFORE ANY WORK INVOLVING PROBING, EXCAVATING, ETC., A FIELD LOCATION OF UNDERGROUND PLANT BY THE PERTINENT UTILITY AUTHORITY IS MANDATORY.

NOTES

1. BEARINGS HEREON ARE ASTRONOMIC AND ARE REFERRED TO THE NORTHERLY LIMIT OF PART 4 AS SHOWN ON PLAN 5R-12313, HAVING A BEARING OF N59°43'30"E
2. SURVEY PERFORMED UNDER WINTER CONDITIONS AND MAY NOT REFLECT ALL FEATURES ON SITE.

LEGEND

- — SURVEY MONUMENT FOUND
- SIB — STANDARD IRON BAR
- SSIB — SHORT STANDARD IRON BAR
- IB — IRON BAR
- ø — ROUND
- (P) — PLAN SR-12313
- (M) — MEASURED
- (S) — SET
- (CITY) — CITY OF OTTAWA
- (SU) — SOURCE UNKNOWN
- DIA. — DIAMETER
- PIN — PROPERTY IDENTIFIER NUMBER
- ▤ CB — CATCH BASIN
- MH — MANHOLE
- LS — LAMP STANDARD
- ⊗ UP — UTILITY POLE
- ◇ FH — FIRE HYDRANT
- ✚ WV — WATER VALVE
- ☼ — CONIFEROUS TREE
- ☼ — DECIDUOUS TREE
- ★ LILAC SHRUB
- OHW— — OVERHEAD UTILITY WIRES
- == CURB


SURVEYOR'S CERTIFICATE

I CERTIFY THAT:

1. THIS SURVEY AND PLAN ARE CORRECT AND IN ACCORDANCE WITH THE SURVEYS ACT, THE SURVEYORS ACT, THE LAND TITLES ACT AND THE REGULATIONS MADE UNDER THEM.

2. THE SURVEY WAS COMPLETED ON FEBRUARY 26, 2019.

2019/03/07
DATE



JOHN H. GUTRIE
ONTARIO LAND SURVEYOR

ASSOCIATION OF ONTARIO
LAND SURVEYORS
PLAN SUBMISSION FORM
2082687



THIS PLAN IS NOT VALID
UNLESS IT IS AN EMBOSSED
ORIGINAL COPY
ISSUED BY THE SURVEYOR
In accordance with
Regulation 1026, Section 29 (3).

**Fairhall
Moffatt &
Woodland**
LIMITED
ONTARIO LAND SURVEYORS

Surveying and Land Information Services

100-600 TERRY FOX DRIVE, KANATA, ONTARIO K2L 4B6
TEL: (613) 501-2580 FAX: (613) 501-1405

JOB No.	Z 1 3 1 0 0
---------	-------------

E 373886, N 5027272

REFERENCE No.
110 5 (25) 02

S:\JOBS\Z13100\DWGS 2019-03-07
tp131z.dwg (kb)