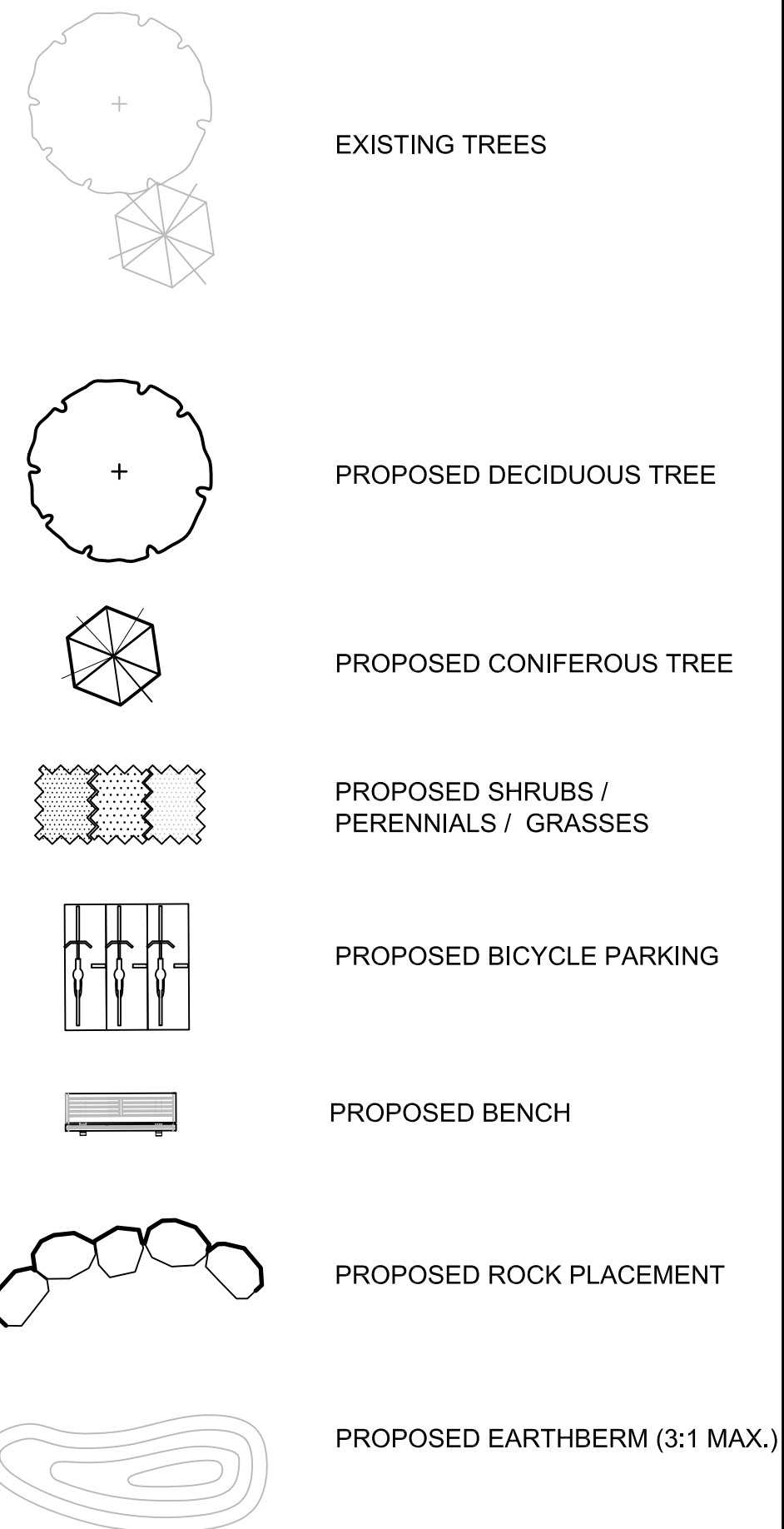


LEGEND / SYMBOL

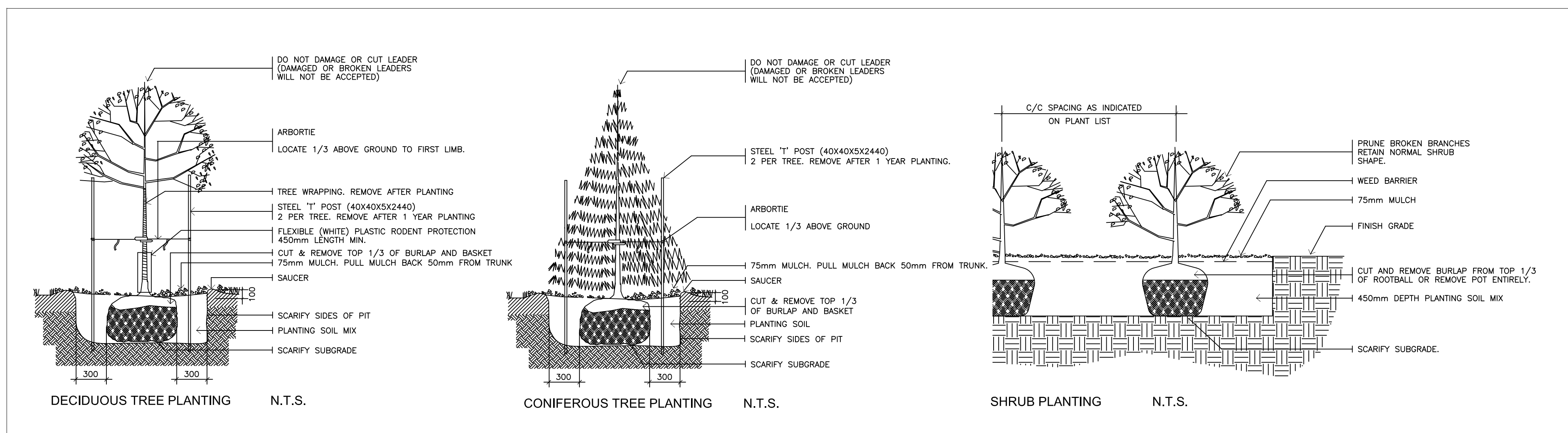


GENERAL NOTES

- This drawing shall be read in conjunction with all relevant Architectural, Engineering and related Drawings and Documents.
- Refer to Engineering Drawings for Grading and Servicing.
- Refer to Architectural Drawings for Site layout.
- Contractor shall provide the location(s) of all services/utilities by consulting Municipal Authorities and Utility companies and shall be responsible for adequate protection from damage during construction.
- Plant material shall be No.1 Grade and shall comply with the Metric Guide Specifications for Nursery Stock (latest edition), published by the Canadian Nursery Trades Association.
- Plant Material locations are **Schematic / Approximate only**. Contractor shall stake out locations on site prior to work.
- Contractor shall guarantee all plant material for a period of one (1) full year from the date of final acceptance.
- Reinstate all areas damaged or disturbed beyond the limit of Work.
- Sod** areas to receive 150mm topsoil. Sod shall be No. 1 quality conforming to the Canadian Nursery Sod rowers Specification.
- Shrubs** shall be planted in a continuous prepared bed of 450mm depth planting soil mix covered over with a woven polypropylene weed control fabric (**LANDSCAPE FABRIC-Green-Line** by Thrace-LINQ) and 75mm depth mulch, to finish grade, as specified
- Perennials and Ornamental Grasses** shall be planted in a continuous prepared bed of 450mm depth planting soil mix covered over with 75mm depth mulch, as specified, to finish grade. (**NO WEED CONTROL FABRIC**)
- Plant Material substitutions shall not be permitted without written approval from the Consultant.
- All materials and construction methods shall conform to City Standards and specification.
- Contractor shall set out construction lines with markers for reference and verification by Consultant.
- THIS PLAN HAS BEEN PREPARED FOR MUNICIPAL SITE PLAN APPROVAL AND MAY NOT BE USE FOR ANY OTHER PURPOSE.**

PLANT MATERIAL SCHEDULE

CODE	BOTANICAL NAME	COMMON NAME	QTY.	SIZE	REMARKS
DECIDUOUS TREES					
AFJ	ACER FREEMANII JEFFERSRED	AUTUMN BLAZE MAPLE	5	60mm cal	B&B, single stem
AS	ACER SACCHARUM	SUGAR MAPLE	3	60mm cal	B&B, single stem
CO	CELTIS OCCIDENTALIS	COMMON HACKBERRY	7	60mm cal	B&B, single stem
GT	GLEDITSIA TRIACANTHOS SKYLINE	SKYLINE HONEYLOCUST	9	60mm cal	B&B, single stem
QM	QUERCUS MACROCARPA	BUR OAK	3	60mm cal	B&B, single stem
QR	QUERCUS RUBRA	RED OAK	3	60mm cal	B&B, single stem
TC	TILIA CORDATA	LITTLELEAF LINDEN	3	60mm cal	B&B, single stem
CONIFEROUS TREES					
PG	PICEA GLAUCA	WHITE SPRUCE	9	180 cm ht	B&B
PN	PINUS NIGRA	AUSTRIAN PINE	5	180 cm ht	B&B
PP	PICEA PUNGENS	COLORADO GREEN SPRUCE	7	180 cm ht	B&B
PR	PINUS RESINOSA	RED PINE	3	180cm ht	B&B
DECIDUOUS SHRUBS					
HAA	HYDRANGEA ARBORESCENS	ANNABELLE HYDRANGEA	20	50cm ht	potted, 100cm o/c
PFY	POTENTILLA FRUTICOSA YELLOW GEM	YELLOW GEM CINQUEFOIL	135	50cm ht	potted, 80cm o/c
PO	PHYSOCARPUS OPULIFOLIUS	COMMON NINEBARK	39	50cm ht	potted, 100cm o/c
PSD	PHILADELPHUS x SNOW DWARF	SNOW DWARF MOCK ORANGE	39	50cm ht	potted, 100cm o/c
RA	RIBES AMERICANUM	WILD BLACK CURRANT	42	50cm ht	potted, 100cm o/c
SJS	SPIRAEA JAPONICA SHIROBANA	SHIROBANA SPIREA	32	50cm ht	potted, 80cm o/c
SS	SORBARIA SORBIFOLIA	FALSE SPIREA	42	60cm ht	potted, 100cm o/c
Sva	SPIRAEA VANHOUTEI	BRIDAL WREATH	39	50cm ht	potted, 100cm o/c
RB	ROSA BLANDA	SHRUB ROSE	84	50cm ht	potted, 100cm o/c
PERENNIALS					
Hem	HEMEROCALLIS 'Hyperion'	Hyperion DAYLILY	80	15 cm pot	plant 60cm o/c
Rud	RUDBECKIA hirta	BROWN-EYED SUSAN	40	15 cm pot	plant 60cm o/c
GRASSES					
Pv	PANICUM virgatum	SWITCH GRASS	24	15cm pot	plant 75cm o/c
Spo	SPOROBOLUS heterolepis	PRAIRE DROPSEED	80	15cm pot	plant 75cm o/c



1 L1.01 PLANTING DETAILS NTS