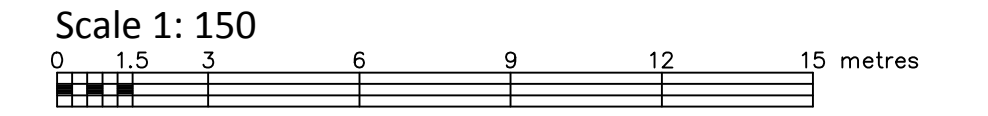


TOPOGRAPHIC PLAN OF SURVEY OF
LOTS 12 AND 13
 (WEST O'CONNOR STREET)
 AND LOT 43 AND
 PART OF LOT 42
 (NORTH GILGOUR STREET)
 REGISTERED PLAN 15558
 CITY OF OTTAWA

FARLEY, SMITH & DENIS SURVEYING LTD. 2019



- Metric Note**
 Distances and coordinates on this plan are in metres and can be converted to feet by dividing by 0.3048.
- Distance Note**
 Distances shown on this plan are ground distances and can be converted to grid distances by multiplying by the combined scale factor of 0.99994.
- Bearing Note**
 Bearings hereon are grid bearings derived from the Smart-Net Real Time Network and are referred to the Central Meridian of MTM Zone 9 (76°30' West Longitude) Nad-83 (Original).
 For bearing comparisons, a rotation of 1°20'30" counter-clockwise was applied to bearings on P2, P4, P6 & P7.
 For bearing comparisons, a rotation of 1°21'00" counter-clockwise was applied to bearings on P3.
 For bearing comparisons, a rotation of 1°22'20" counter-clockwise was applied to bearings on P5.

- Elevation Notes**
- Elevations shown are geodetic and are referred to Geodetic Datum CGVD-1928 -1978. (ADW Ref. No. 13422-12)
 - It is the responsibility of the user of this information to verify that the job benchmark has not been altered or disturbed and that its relative elevation and description agrees with the information shown on this drawing.

- Utility Notes**
- This drawing cannot be accepted as acknowledging all of the utilities and it will be the responsibility of the user to contact the respective utility authorities for confirmation.
 - Only visible surface utilities were located.
 - Underground utility data derived from City of Ottawa utility sheet reference: E-12-24, Dwg. 1526 (Sheets 1 & 2 of 4), Dwg. 2399 (Sheet 3 of 4) & Dwg. 6526 (Sheet 2 of 2).
 - Sanitary and storm sewer grades and inverts were derived from field measurement.
 - A field location of underground plant by the pertinent utility authority is mandatory before any work involving breaking ground, probing, excavating etc.

Notes & Legend

| | | |
|---------|--|-------------------------|
| □ | Denotes | Survey Monument Planted |
| IB | Survey Monument Found | |
| IB* | Iron Bar | |
| IB* | Iron Bar (0.30m Long) | |
| CP | Concrete Pin | |
| (WH) | Witness | |
| M | Measured | |
| (P1) | Registered Plan 15558 | |
| (P2) | Plan by (857) dated July 5, 1988 (Ref. No. 214-15558) | |
| (P3) | Plan by (1236) dated July 23, 1987 (Ref. No. 392-87) | |
| (P4) | Plan by (5G) dated May 5, 2013 (Ref. No. 68-15558) | |
| (P5) | Plan by (1319) dated Nov. 8, 1994 (Ref. No. 56-15558) | |
| (P6) | Plan by (1319) dated Nov. 17, 1988 (Ref. No. 45-15558) | |
| (D1) | Plan by (AOC) dated June 1, 1993 (Ref. No. 0-139-93) | |
| (D2) | Inst. N418499 | |
| ○ MH-S | Maintenance Hole (Storm) | |
| ○ MH-S | Maintenance Hole (Sanitary) | |
| ○ MH-B | Maintenance Hole (Bell) | |
| ○ MH-T | Hand Hole (Traffic) | |
| ○ VC | Valve Chamber (Watermain) | |
| ST | Underground Storm Sewer | |
| S | Underground Sanitary Sewer | |
| W | Underground Water | |
| P | Underground Power | |
| B | Underground Bell | |
| G | Underground Gas | |
| T | Underground Traffic | |
| OW | Overhead Wires | |
| UP | Utility Pole | |
| AN | Anchor | |
| LS | Light Standard | |
| CB | Catch Basin | |
| FH | Fire Hydrant | |
| WV | Water Valve | |
| SP | Water Stand Post | |
| GV | Gas Valve | |
| GM | Gas Meter | |
| TSP | Traffic Signal Post | |
| B | Bollard | |
| Δ S | Sign | |
| ○ PO-W | Wood Pole | |
| ○ M-W | Monitoring Well | |
| Fdn | Foundation | |
| U/Eave | Underside of Eave | |
| HK | Hydro Kiosk | |
| Invert | Invert | |
| T/G | Top of Grate | |
| Ø | Diameter | |
| + 65.00 | Location of Elevations | |
| + 65.00 | Top of Concrete Curb Elevation | |
| ○ | Well Cap | |
| ○ | Vent Pipe | |
| CLF | Chain Link Fence | |
| MF | Metal Rail Fence | |
| BF | Board Fence | |
| BRW | Brick Retaining Wall | |
| SRW | Stone Retaining Wall | |
| AC | Air Conditioner | |
| C/L | Centreline | |
| --- | Property Line | |
| --- | Deciduous Tree | |

REVISION NOTE:
 Dimensions were added to the line between PIN 04119-0055 and PIN 0419-0056.

February 4th, 2019
 Date
 Daniel Robinson
 Ontario Land Surveyor

Surveyor's Certificate
 I certify that:
 1. This survey and plan are correct and in accordance with the Surveys Act, the Surveyors Act and the Regulations made under them.
 2. The survey was completed on the 20th day of December, 2018.

January 18th, 2019
 Date
 Daniel Robinson
 Ontario Land Surveyor

FARLEY, SMITH & DENIS SURVEYING LTD.

ONTARIO LAND SURVEYORS
 CANADA LAND SURVEYORS
 190 COLONNADE ROAD, OTTAWA, ONTARIO K2E 7J5
 TEL. (613) 727-8226 FAX. (613) 727-1826

TOPOGRAPHIC DATA WAS COLLECTED UNDER WINTER CONDITIONS. SNOW COVER AND ICE PRECLUDE DETERMINING LOCATION AND ELEVATION OF SOME TOPOGRAPHICAL DATA THAT IS OTHERWISE VISIBLE.

WARNING: NO PERSON MAY COPY, REPRODUCE, DISTRIBUTE OR ALTER THIS PLAN IN WHOLE OR IN PART WITHOUT THE WRITTEN PERMISSION OF FARLEY, SMITH & DENIS SURVEYING LTD.
 © FARLEY, SMITH & DENIS SURVEYING LTD., 2019.

ASSOCIATION OF ONTARIO LAND SURVEYORS
 PLAN SUBMISSION FORM
 2 0 7 3 4 7 6

THIS PLAN IS NOT VALID UNLESS IT IS AN EMBOSSED ORIGINAL COPY ISSUED BY THE SURVEYOR
 In accordance with Regulation 1026, Section 29 (3).