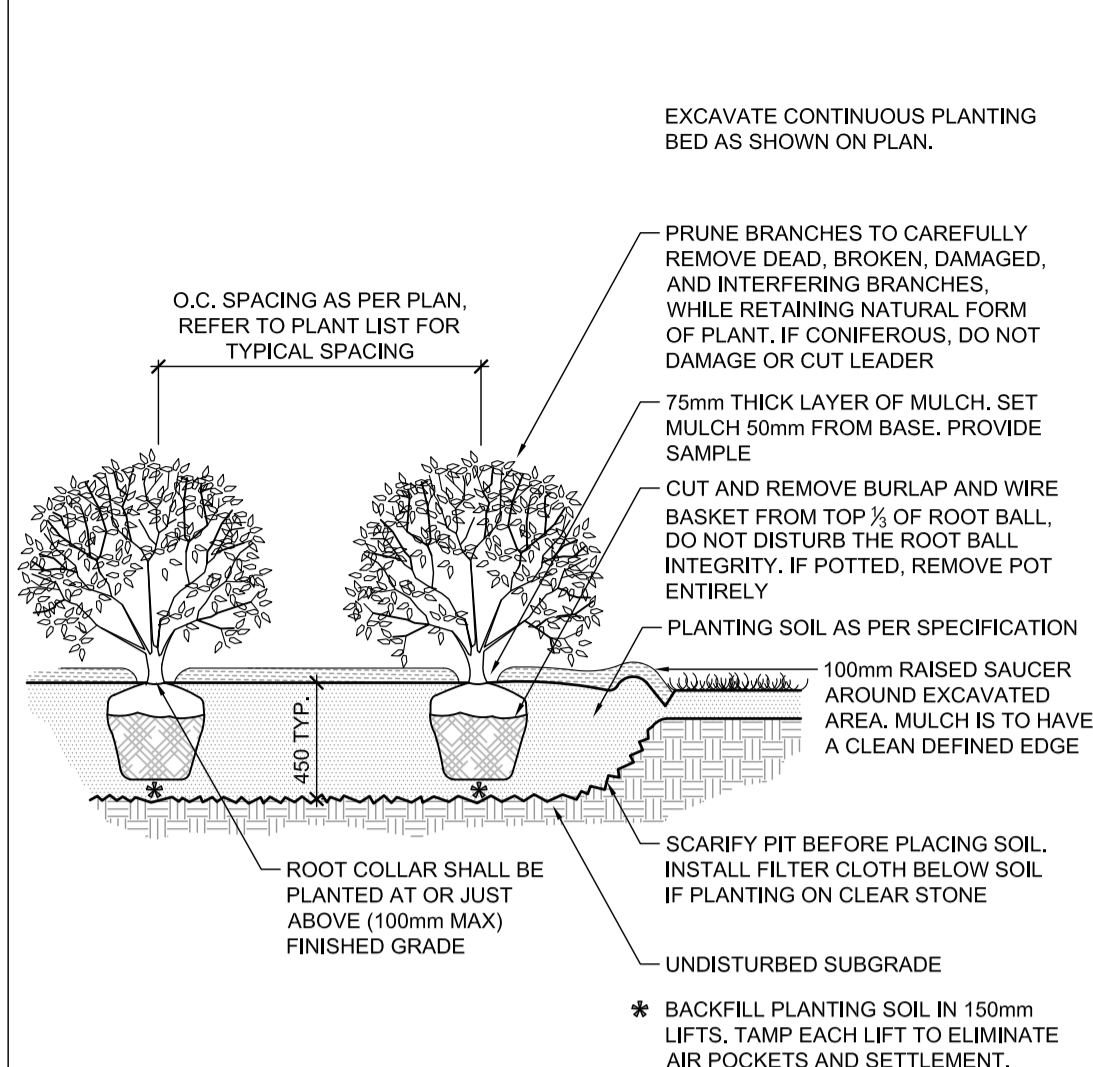


STANDARD DECIDUOUS TREE PLANTING D1



SHRUB AND PERENNIAL PLANTING D2

118074 - 280 O'Connor Street - Plant List

KEY	QTY	BOTANICAL NAME	COMMON NAME	SIZE	COND	SPACING
Deciduous Trees						
MSS	1	<i>Malus 'Spring Snow'</i>	Spring Snow Crabapple	50mm Cal	WB	As Shown
Deciduous Shrubs						
Csa	13	<i>Cornus sericea 'Farrow'</i>	Arctic Fire Dogwood	50cm HT	PT	As Shown
Hpw	20	<i>Hydrangea paniculata 'DVPinky'</i>	Pinky Winky Hydrangea	50cm HT	PT	As Shown
Poj	8	<i>Physocarpus opulifolius 'JEFAM'</i>	Amber Jubilee Ninebark	60cm HT	PT	As Shown
Shs	7	<i>Spiraea nipponica 'Harward's Silver'</i>	Harward's Silver Spiraea	50cm HT	PT	As Shown
Perennials						
hhr	26	<i>Hemerocallis 'Happy Returns'</i>	Happy Returns Daylily	1g	PT	45cm O.C.
hag	19	<i>Hosta 'Abiqua Drinking Gourd'</i>	Drinking Gourd Hosta	1g	PT	100cm O.C.
hj	38	<i>Hosta 'June'</i>	June Hosta	1g	PT	60cm O.C.
rfg	30	<i>Rudbeckia fulgida 'Goldsturm'</i>	Goldsturm Coneflower	1g	PT	60cm O.C.
Ornamental Grasses						
ckf	78	<i>Calamagrostis acutiflora 'Karl Foerster'</i>	Karl Foerster Feather Reed Grass	1g	PT	60cm O.C.
db	46	<i>Deschampsia cespitosa 'Bronzeschleier'</i>	Bronze Veil Tufted Hair Grass	1g	PT	50cm O.C.

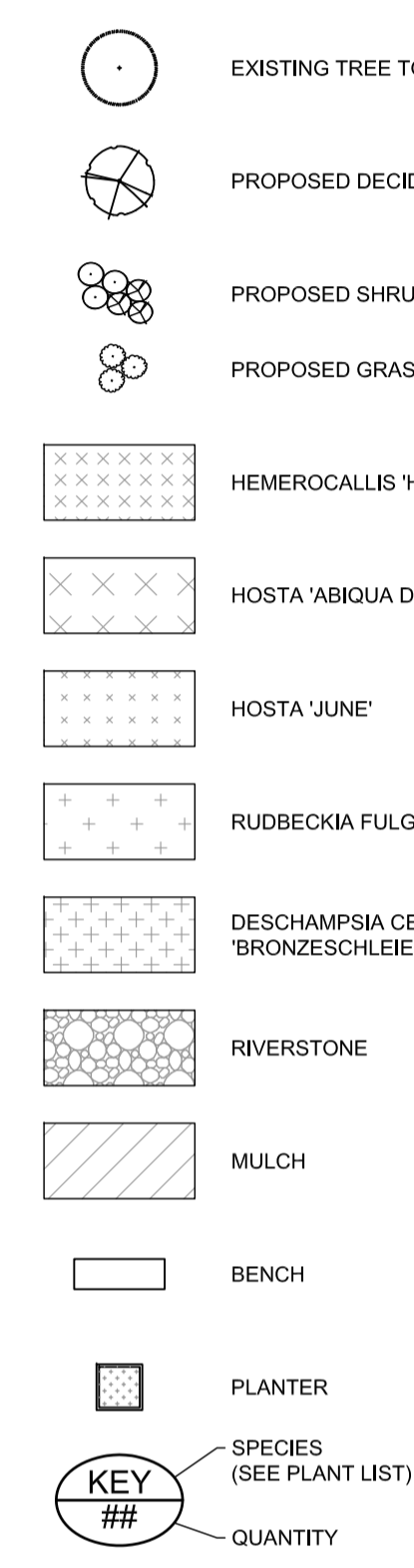
118074 - 280 O'Connor Street - Planters - Plant List

KEY	QTY	BOTANICAL NAME	COMMON NAME	SIZE	COND	SPACING
acp	6	<i>Astilbe chinensis 'Vision in Pink'</i>	Vision in Pink Chinese Astilbe	1g	PT	**
hj	12	<i>Hosta 'June'</i>	June Hosta	1g	PT	**

** SEE PLANTER NOTES



LANDSCAPE LEGEND:



PLANTING NOTES

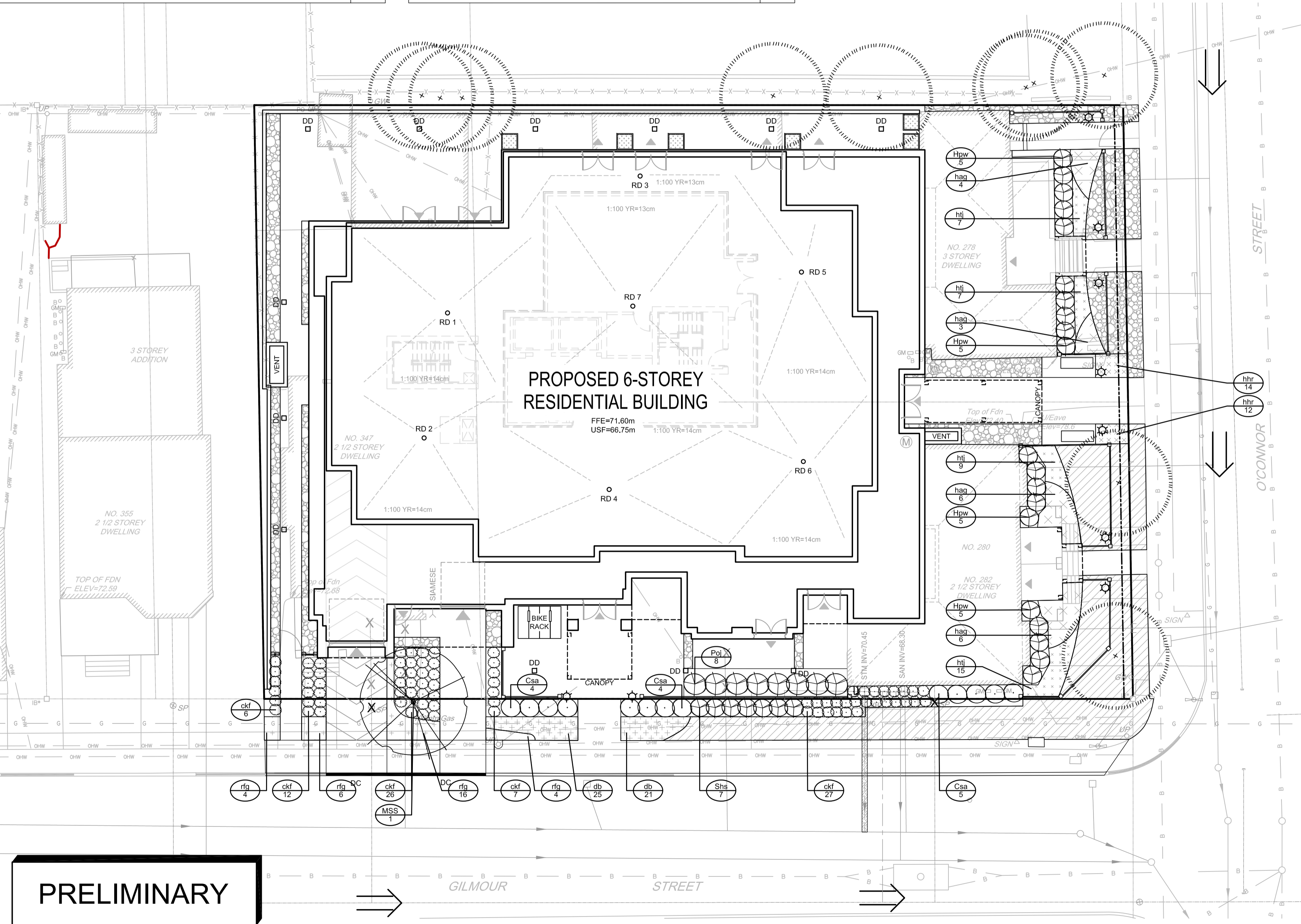
- This drawing shall be read in conjunction with all relevant Architectural, Engineering, and related drawings and documents.
- Refer to Engineering Drawings for Grading. Provide drainage as indicated in grading plan. Round all tops and toes of slopes, smoothly. Compact all areas to 95% Standard Proctor Density unless otherwise noted.
- Refer to Architectural Drawings for site layout.
- Refer to Engineering Drawings for site servicing.
- Contractor must contact utility companies for locates prior to excavation or planting.
- It is essential to use the plans and details in conjunction with the specifications and notes.
- Existing trees to be retained shall be protected according to the contract detail and specifications.
- Plant material shall be No. 1 Grade and shall comply with Canadian Standards for Nursery Stock (latest edition) published by the Canadian Nursery Landscape Association.
- Use plant material with strong fibrous root system free of disease, defects or injuries, and structurally sound. Use trees with straight trunks, well and characteristically branched for species. Obtain approval from consultant of plant material at source prior to digging. All trees and shrubs shall be container grown, potted, W/B or B/B, as indicated on Plant List. Bare root planting will only be acceptable for certain species and as approved by the Landscape Architect.
- Plant material substitutions shall not be permitted without the written approval from the consultant, with 48 hours notice, prior to shipping plant material.
- Contractor shall stake out locations on site for approval by the Landscape Architect prior to installation. The illustrated number of plants shown in the Planting Plan supersedes the estimated number in the Plant List. Contractor to report any discrepancies to the Landscape Architect prior to installation. Contractor will assume full responsibility if the Landscape Architect is not notified.
- Shrubs, Perennials, Vines, and Groundcovers shall be planted in a continuous planting bed of 450mm depth with approved topsoil covered with 75mm depth shredded bark mulch.
- Ensure trees are thoroughly watered following planting. Monitor material and ensure adequate moisture until acceptance.
- In heavy clay or poorly drained soils, set root ball with root collar 75-100mm higher than finished grade.
- Sod and/or seed areas to receive 100mm depth topsoil as specified. Sod shall be No. 1 Kentucky Bluegrass Sod grown from minimum mixture of 3 Kentucky Bluegrass cultivars. Quality and source shall comply with Canadian Standards for Nursery Stock, Section 17, (latest edition) published by the Canadian Nursery Landscape Nursery Association. Unless otherwise specified, turf is to be maintained by the contractor until a second cutting is accepted by the Landscape Architect.
- Apply the following mineral fertilizer unless soil tests show other requirements: Sodded areas - (6-32-16) 8% Nitrogen, 32% Phosphorus, 16% Potash at a rate of 350kg/ha. Planting Beds - (8-32-16) - 8% Nitrogen, 32% Phosphorus, 16% Potash as per manufacturer specifications.
- Reinstate all areas damaged or disturbed beyond the Limit of Work.

PLANTER NOTES

- There are to be 6 planters located per the Landscape Plan. Planters are to be UPSW-36S by Wishbone. Colour of Plastic Slats: Walnut. Colour of Powder Coated Aluminium Frame: Textured Silver.
- Per planter place one (1) acp (*Astilbe chinensis 'Vision in Pink'*) and two (2) hj (*Hosta 'June'*). Place the two hj along the side of the planter closest to the building. Place the acp along the side of the planter furthest from the building and centred between the two hj.

TREE PROTECTION NOTES

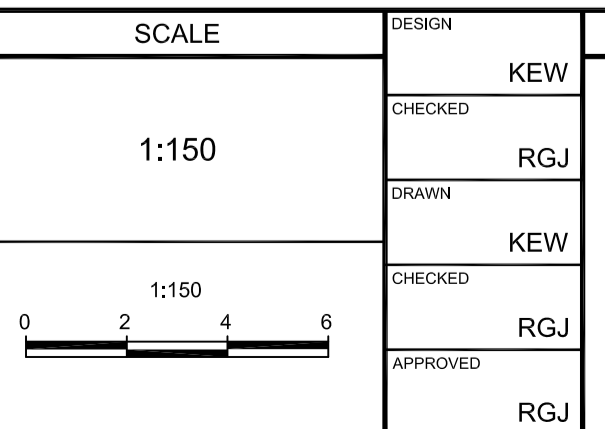
- The following protection measures must be implemented for retained trees, both on site and on adjacent sites, prior to any tree removal or site works and maintained for the duration of construction on site:
- Under the guidance of a Landscape Architect or Certified Arborist, erect a fence at the critical root zone (CRZ) of trees where the CRZ is established as being 10 centimetres from the trunk of a tree for every centimetre of trunk diameter at breast height. The CRZ is calculated as DBH x 10cm. Refer to the Tree Protection Fence detail. See plan for fence location.
 - When trees to be removed overlap with the CRZ of trees to be preserved; cut roots at the edge of the CRZ and grind down stumps after tree removal; do not pull out stumps. Ensure there is not root pulling or disturbance of the ground within the CRZ.
 - If roots must be cut, roots 20mm or larger should be cut at right angles with clean, sharp horticultural tools without tearing, crushing, or pulling. Refer to City of Ottawa Specification S.P. F-8011 Tree Protection, Excavation of Root Zone.
 - Hand work only where required within the CRZ; absolutely no machinery permitted.
 - Do not place any material or equipment within the CRZ of any tree.
 - Do not attach any signs, notices or posters to any tree.
 - Do not disturb, raise or lower the existing grade within the CRZ without approval.
 - Only tunnel or bore when digging within the CRZ of a tree.
 - Do not damage the root system, trunk, or branches of any tree.
 - Ensure that exhaust fumes from all equipment are directed away from any tree canopy.



PRELIMINARY

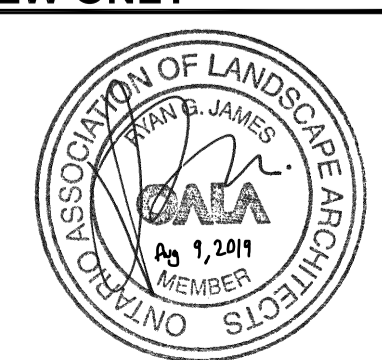
OWNER INFORMATION
 POLO IV PROPERTIES INC.
 2120 WOODCREST ROAD,
 OTTAWA, ONTARIO, K1H 6H8
 c/o AK GLOBAL MANAGEMENT INC.
 TONY KAZARIAN
 PHONE: (613) 592-5960
 tony.k@akmanagement.com

No.	REVISION	DATE	BY
2.	ISSUED FOR SITE PLAN APPROVAL	AUG 9/19	RGJ
1.	ISSUED FOR COORDINATION	AUG 1/19	RGJ



FOR REVIEW ONLY

DESIGN	KEY
CHECKED	RGJ
DRAWN	KEW
CHECKED	RGJ
APPROVED	RGJ



LOCATION CITY OF OTTAWA 280 O'CONNOR STREET	
DRAWING NAME LANDSCAPE PLAN	
PROJECT NO. 118074-00	REV # 2
DRAWING NO. 118074-L1	

M:\2018\118074\CADD\landscape\1-Plan\118074-L1.dwg, L1, Aug 14, 2019, 9:47 am, kwanston