

2	0	2019/04/26	RESPONSE TO CITY'S COMMENTS
1	0	2018/12/07	ISSUED FOR SITE PLAN CONTROL
ISSUE NO.	REV. NO.	DATE	ISSUE

LES IDEES, CONCEPTS, DISPOSITIONS ET PLANS MONTRÉS OU REPRÉSENTÉS PAR CE DESSIN APPARTIENNENT À EDWARD J. CUHACI AND ASSOCIATES ARCHITECTS INC. ET ONT ÉTÉ CRÉÉS, ET DÉVELOPPÉS POUR ÊTRE UTILISÉS DANS LE CADRE DU PRÉSENT PROJET. ILS NE DOIVENT PAS ÊTRE UTILISÉS À D'AUTRES FINS NI COMMUNIQUÉS À QUI QUE CE SOIT SANS LA PERMISSION ÉCRITE DE EDWARD J. CUHACI AND ASSOCIATES ARCHITECTS INC.

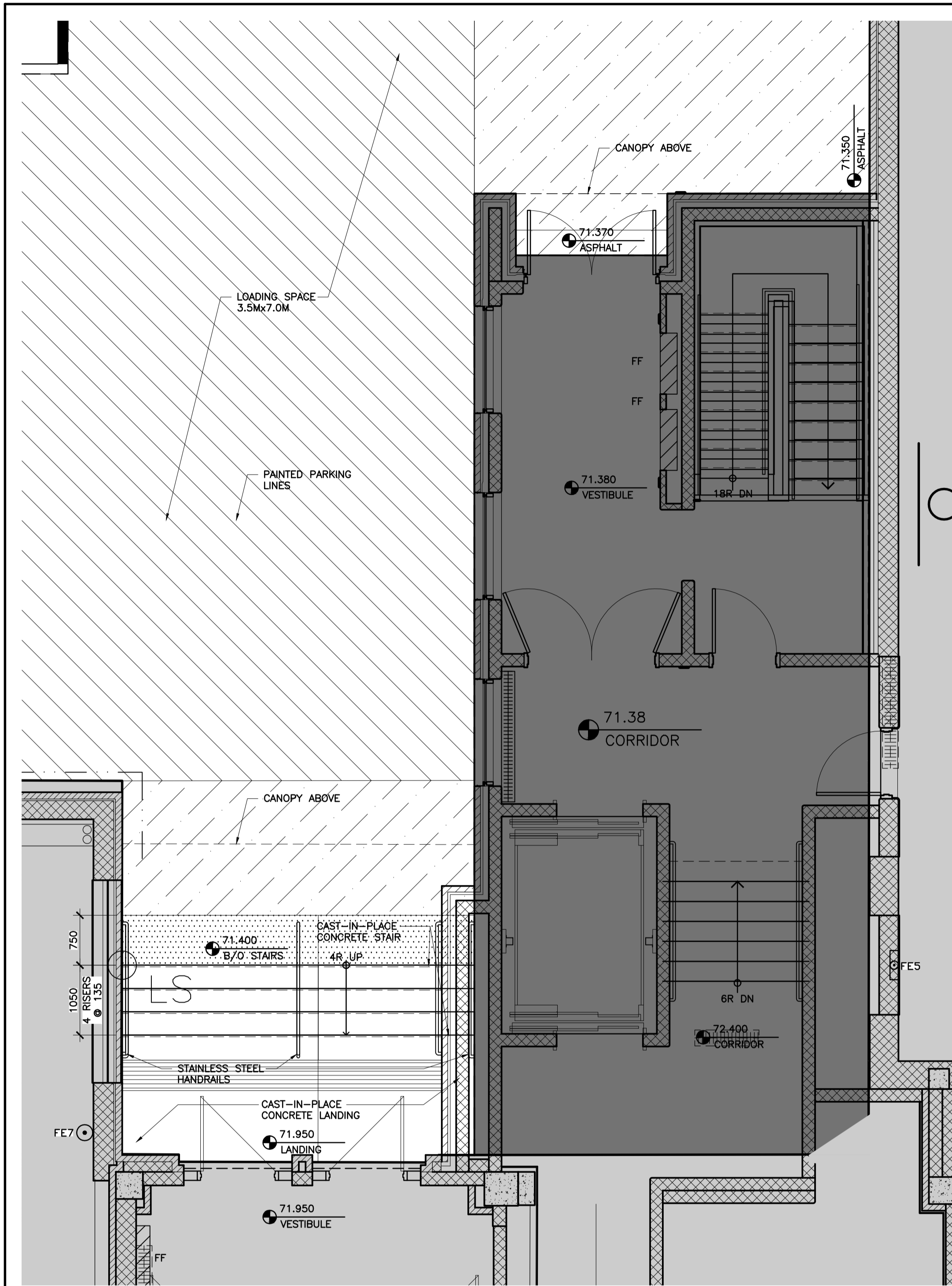
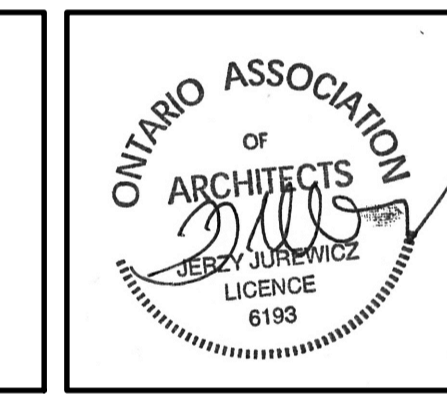
L'ARCHITECTE DÉCLINE TOUTE RESPONSABILITÉ DÉCOULANT DE PROBLÈMES FAISANT SUITE AU NON RESPECT DES PLANS ET DEVIS OU DE L'INTENTION DU CONCEPT QU'ILS TRANSMETTENT, OU DE TOUS PROBLÈMES POUVANT RÉSULTER DU DÉFAUT DE TIERS D'OBTENIR OU DE SUIVRE LES INSTRUCTIONS DE L'ARCHITECTE RELATIVEMENT AUX ERREURS, OMISSIONS, INCOHÉRENCES, AMBIGUITÉS OU CONTRADICTIONS ALLEGUÉS.

L'ENTREPRENEUR DOIT VÉRIFIER TOUTES LES DIMENSIONS SUR PLACE ET INFORMER L'ARCHITECTE DE TOUT ÉCART AVANT LE DÉBUT DES TRAVAUX. NE PAS MESURER LES DESSINS À L'ÉCHELLE.

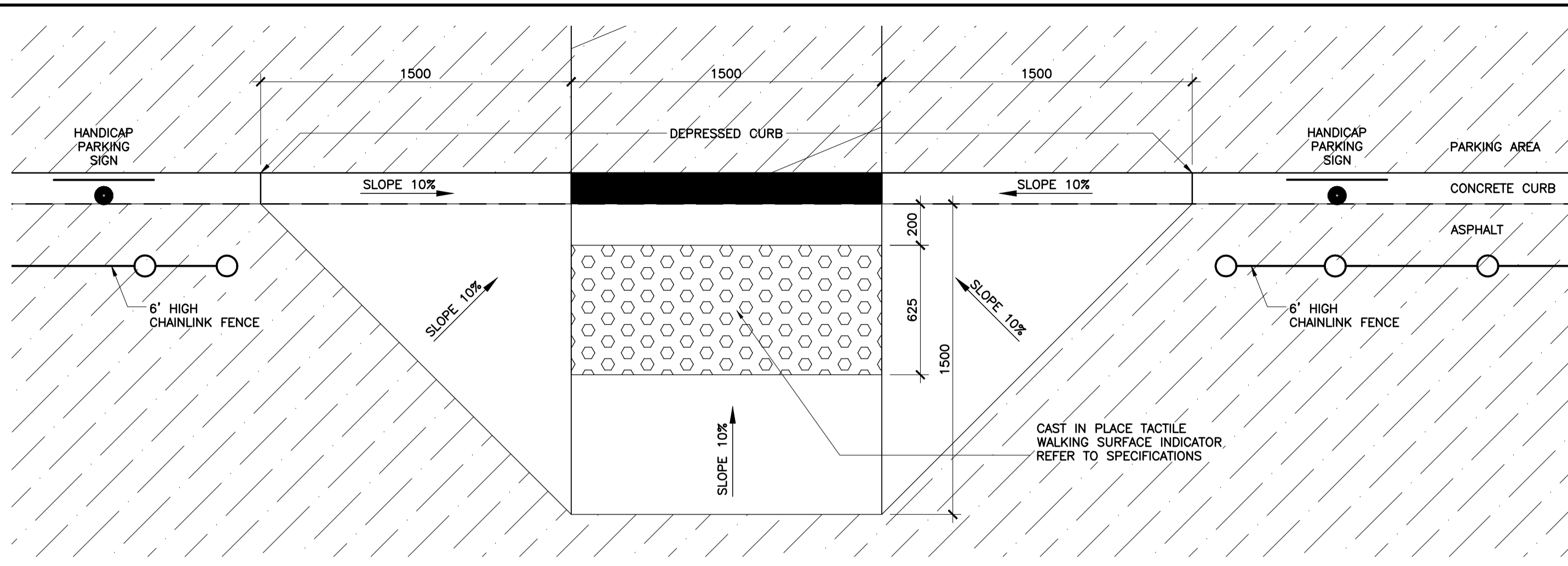
ALL IDEAS, DESIGNS, ARRANGEMENTS, AND PLANS INDICATED OR REPRESENTED BY THIS DRAWING ARE OWNED BY AND THE PROPERTY OF EDWARD J. CUHACI AND ASSOCIATES INC. AND WERE CREATED, EVOLVED, AND DEVELOPED FOR USE ON AND IN CONNECTION WITH THE SPECIFIED PROJECT. NONE OF THE IDEAS, DESIGNS, ARRANGEMENTS OR PLANS SHALL BE USED BY OR DISCLOSED TO ANY PERSON, FIRM, OR CORPORATION FOR ANY PURPOSE WHATSOEVER WITHOUT THE WRITTEN PERMISSION OF EDWARD J. CUHACI AND ASSOCIATES INC.

THE ARCHITECT WAIVES ANY AND ALL RESPONSIBILITY AND LIABILITY FOR PROBLEMS WHICH ARISE FROM FAILURE TO FOLLOW THESE PLANS, SPECIFICATIONS, AND THE DESIGN INTENT THEY CONVEY, OR FOR PROBLEMS WHICH ARISE FROM OTHERS' FAILURE TO OBTAIN AND/OR FOLLOW THE ARCHITECT'S GUIDANCE WITH RESPECT TO ANY ERRORS, OMISSIONS, INCONSISTENCIES, AMBIGUITIES OR CONFLICTS WHICH ARE ALLEGED.

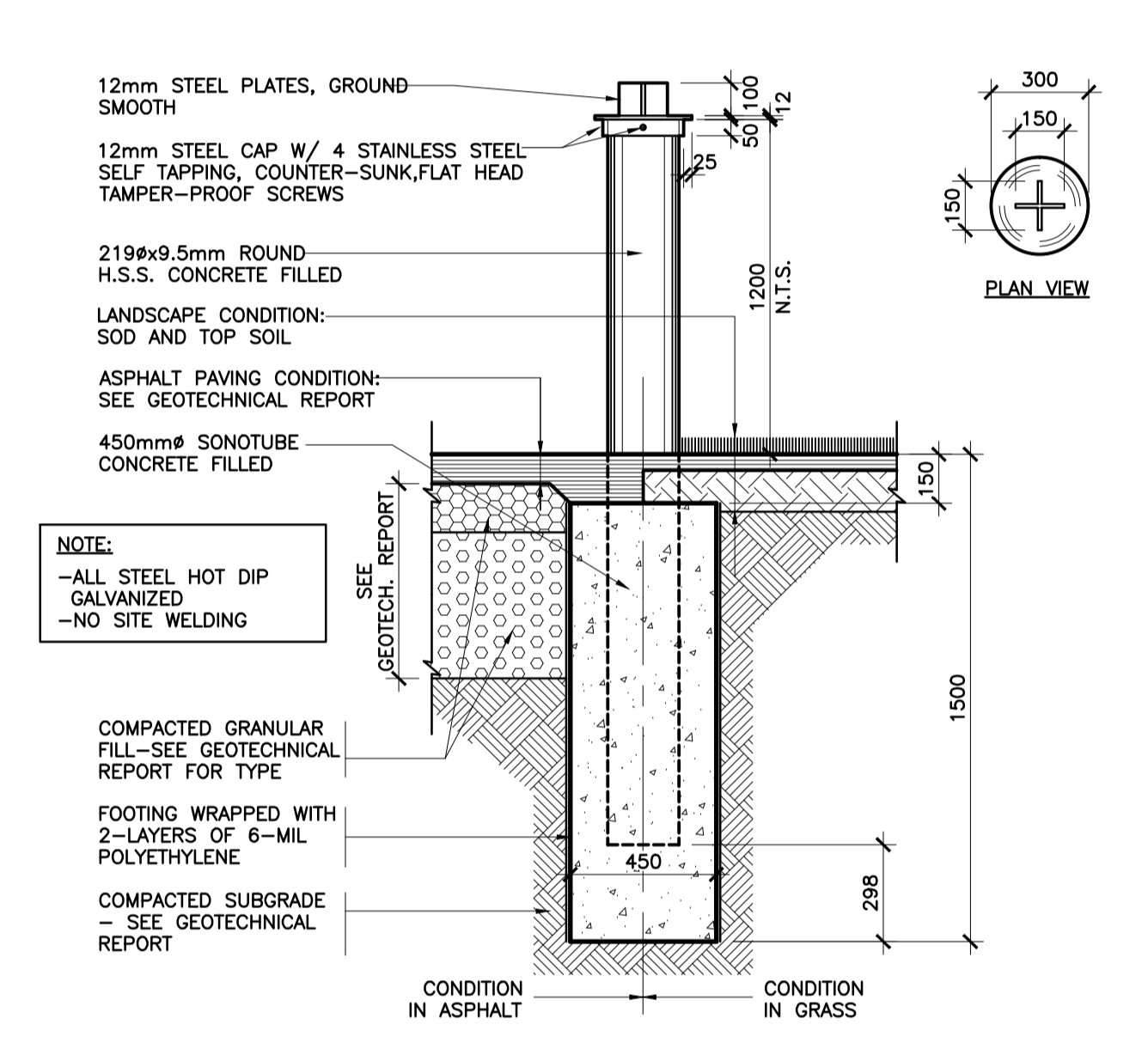
CONTRACTOR TO VERIFY ALL DIMENSIONS AND NOTIFY THE ARCHITECT OF ANY DISCREPANCIES BEFORE WORK COMMENCES. DO NOT SCALE DRAWINGS



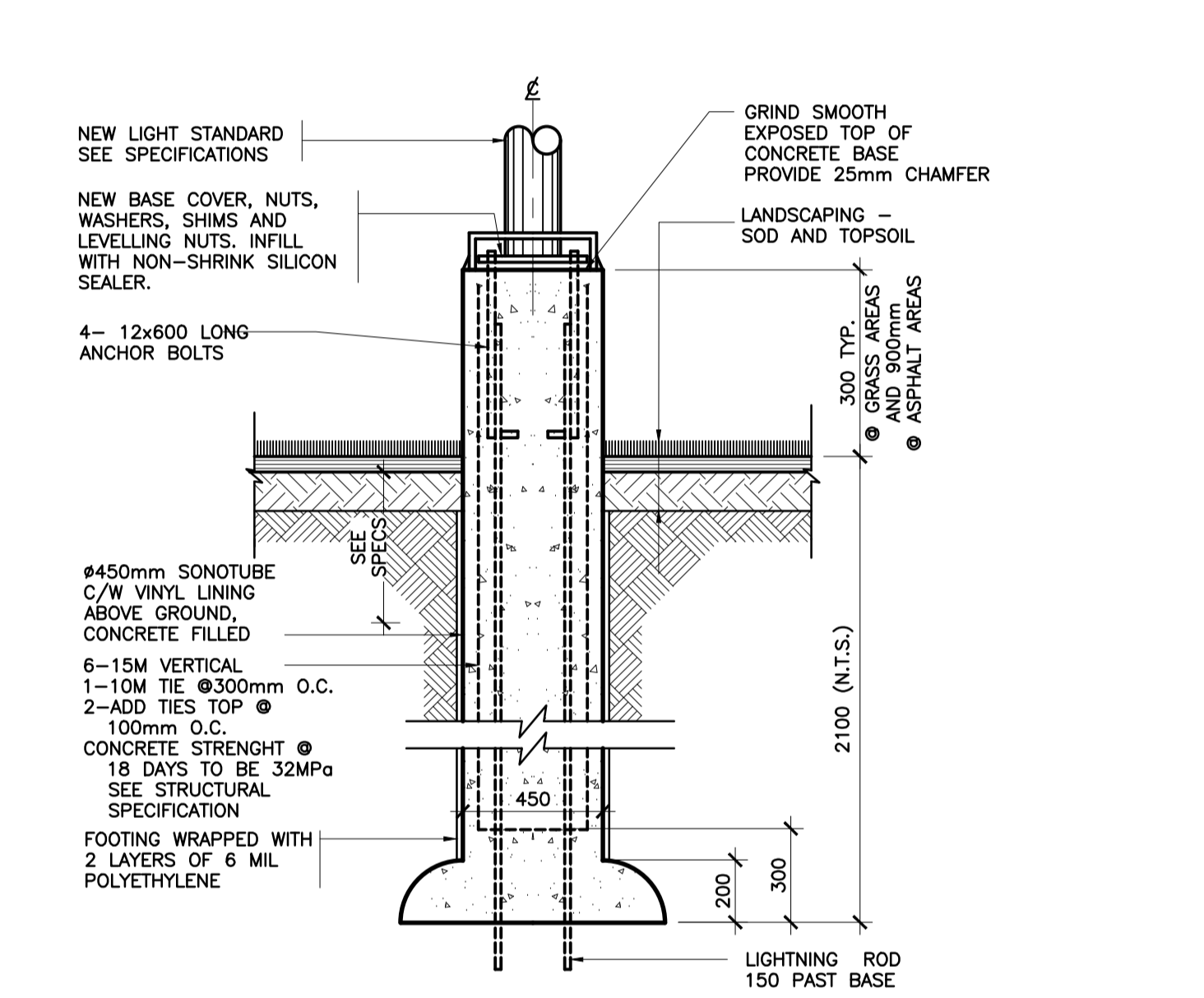
**1** SITE DETAIL @ ELEVATOR ADDITION  
A005 1:50



**2** BARRIER FREE CURB RAMP WITH TACTILE INDICATORS  
A005 1:20



**3** NEW BOLLARD SECTION  
A005 1:20

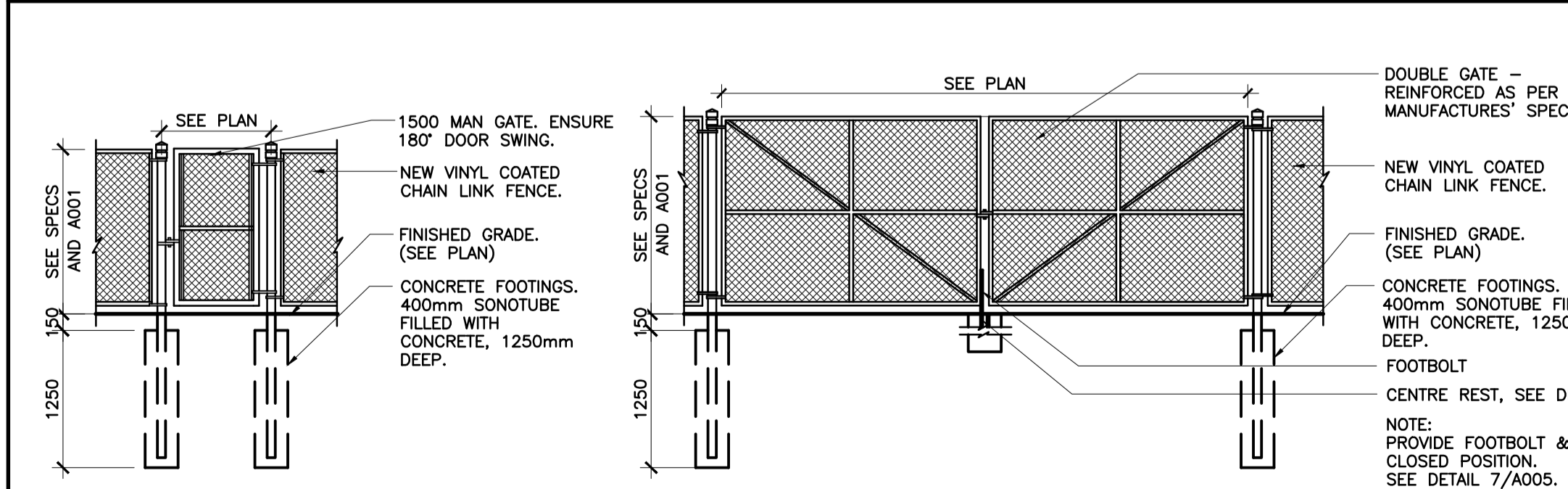


**4** NEW LIGHT STANDARD SECTION  
A005 1:20

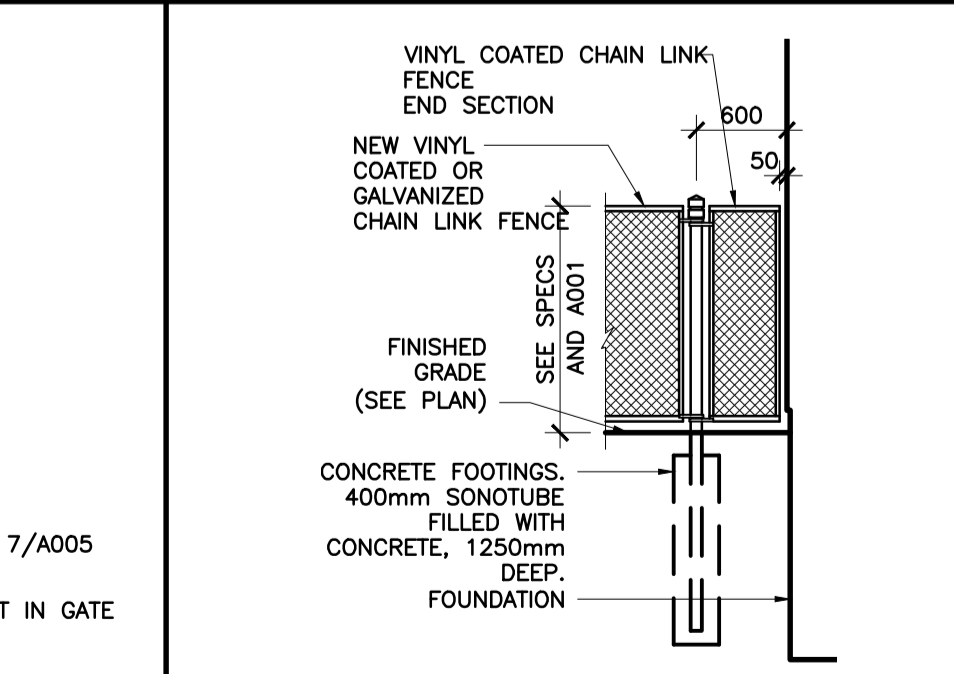
**DRAWING LEGEND**

	EXISTING BUILDING		LIGHT DUTY ASPHALT PAVING
	NEW BUILDING ADDITION		CONCRETE PAVING
	HEAVY DUTY ASPHALT PAVING		CONCRETE CONTROL JOINT

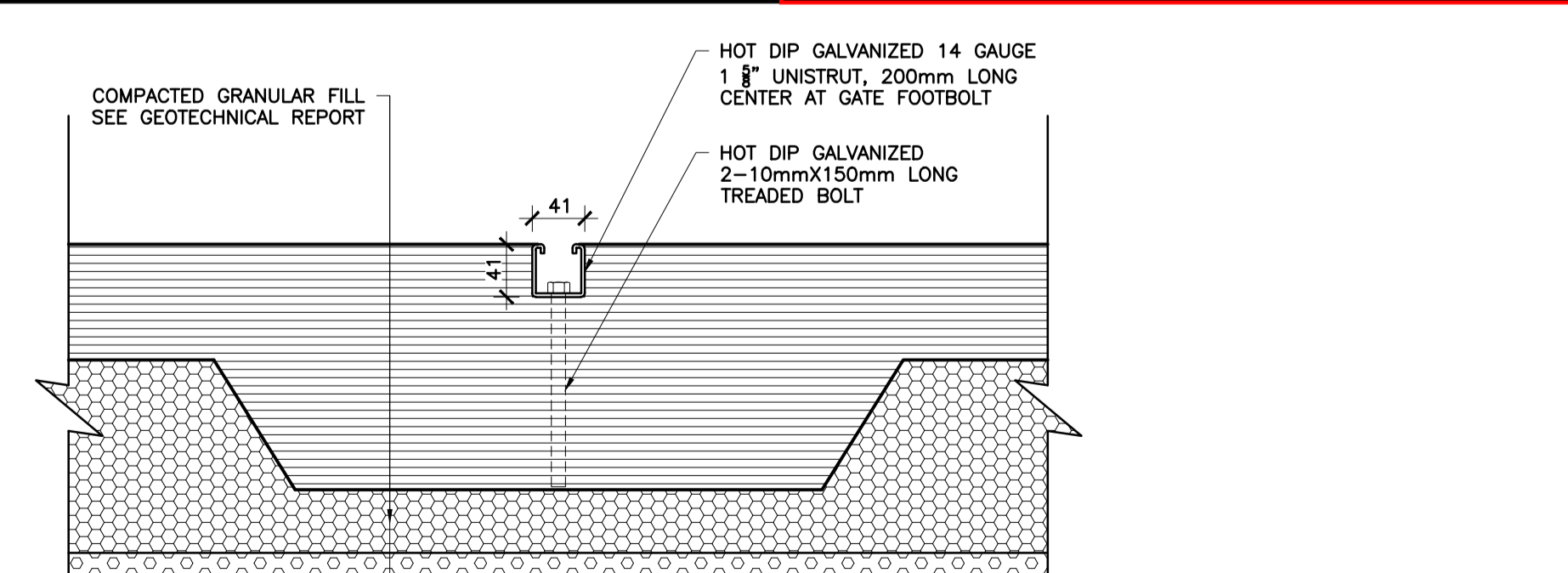
*Douglas James*  
**DOUGLAS JAMES, MCIP, RPP**  
MANAGER, DEVELOPMENT REVIEW - CENTRAL PLANNING, INFRASTRUCTURE & ECONOMIC DEVELOPMENT DEPARTMENT, CITY OF OTTAWA



**5** CHAINLINK FENCE GATE ELEVATIONS  
A005 1:50



**6** FENCE END AT BUILDING  
A005 1:50



**7** FOOTBOLT REST  
A005 1:5

**APPROVED**  
By Jamesdo at 2:39 pm, Sep 13, 2019

**EDWARD J. CUHACI & ASSOCIATES ARCHITECTS Inc.**  
171 Slater St. Suite 100, Ottawa, Ontario, K1P 5H7  
Fax: (613) 236-1944 Telephone: (613) 236-7135 E-mail: info@cuhaci.com

PROJECT TITLE/TITRE DU PROJET  
**ELMDALE PUBLIC SCHOOL ADDITION AND RENOVATION**  
49 IONA STREET, OTTAWA, ON K1Y 3L9  
OTTAWA-CARLETON DISTRICT SCHOOL BOARD  
133 GREENBANK ROAD  
NEPEAN, ONTARIO, K2H 6L3

DRAWING TITLE/TITRE DU DESSIN  
**SITE DETAILS**

SCALE ECHELLE	AS SHOWN	PROJ. No. 1853	ISSUE No. 2	REV. No. 0
DRAWN BY DESSINÉ PAR	SL	DRAWING/DESSIN	<b>A005</b>	
CHECKED BY VÉRIFIÉ PAR	JJ	DATE	DECEMBER 2018	
ACAD FILE/FICHER: 1853-A005 SPC.dwg				