



OTTAWA-CARLETON DISTRICT SCHOOL BOARD

GENERAL ROOF PLAN NOTES

1. ROOFING CONTRACTOR TO PROVIDE TAPERED INSULATION COUNTER SLOPES WHERE SHOWN ON ROOF PLAN. MINIMUM 1200mm WIDE FROM MINIMUM 25mm THICK TO 0 THICK WITH A MIN. FINISHED ROOF SLOPE OF 2%.
2. WHERE THICKNESS OF TAPERED INSULATION IS NOT INDICATED, THE MIN. SLOPE FOR THE ROOFING AT THE TAPERED INSULATION SHALL BE 20mm PER LINEAR METRE. TAPERED INSULATION THICKNESS TO SUIT.
3. ROOFING CONTRACTOR TO COORDINATE ALL MECHANICAL AND ELECTRICAL ROOF PENETRATIONS SEE MECHANICAL AND ELECTRICAL DRAWINGS FOR LOCATIONS AND ADDITIONAL INFORMATION.
4. ALL ROOF CURBS SHALL BE LEVEL.
5. FOR FULL EXTENT QUANTITY AND TYPE OF ROOF TOP EQUIPMENT, ROOF PENETRATIONS REFER TO MECHANICAL AND ELECTRICAL DOCUMENTS. COORDINATE SIZES AND SPECIFIC REQUIREMENTS.
6. FOR TYPICAL DETAILS AT ROOF TOP EQUIPMENT AND PENETRATIONS, REFER TO ARCHITECTURAL DETAILS. ALSO REFER TO MECHANICAL AND ELECTRICAL DOCUMENTS. IN THE EVENT OF CONFLICT BETWEEN DRAWINGS, THE MOST STRINGENT SHALL GOVERN.
7. INSTALL ALL MECHANICAL AND ELECTRICAL ROOF PENETRATIONS PRIOR TO ROOF MEMBRANE INSTALLATION.
8. ROOFING CONTRACTOR SHALL PROVIDE FRAM INSULATION ON ROOF SIDE OF METAL DECK FLUTES AT EXT. RECESSED ENTRANCES - INSULATION SHALL EXTEND MIN. 300mm EACH SIDE OF WALL BELOW WITH MIN. R-VALUE OF R-36.
9. IN THE EVENT OF DISCREPANCIES FOR THE LOCATION OF MECHANICAL OR ELECTRICAL ITEMS TO BE INCORPORATED, THE ARCHITECTURAL DRAWINGS SHALL GOVERN.
10. ALL ROOF OVERFLOW SCUPPERS SHALL BE INSTALLED SO THAT THE BOTTOM OF EACH SCUPPER IS 150mm ABOVE ADJACENT ROOF DRAIN ELEVATIONS. ELEVATIONS TO BE MEASURED FROM FLANGE OF ROOF DRAIN.
11. COORDINATE WITH MECHANICAL CONTRACTOR LOCATION AND QUANTITY OF VENT PENETRATIONS THROUGH ROOFS AND PIPE PENETRATION DOGGHOUSES.

ROOF PLAN LEGEND

- EXISTING BUILDING TO REMAIN
- MODIFIED BITUMINOUS ROOFING
- MODIFIED BITUMINOUS ROOFING WITH 1200mm WIDE WALKWAY PROTECTION PROVIDE AROUND FULL PERIMETER OF R.T.U.
- RUBBER MAT WALKING PAD 1200mm WIDE x 1800mm LONG
- MODIFIED BITUMINOUS ROOFING WITH TAPERED ROOF INSULATION TO PROVIDE A POSITIVE FINISHED SLOPE OF 2% MINIMUM
- COMPOSITE ALUMINUM PANELS
- ADDITIONAL 1-PLY 1800mm WIDE CONTRASTING COLOUR ROOF CAP SHEET REINFORCED SAFETY FIBRE AS PER M.O.L. REGULATIONS
- CONTROL JOINT
- ROOF PENETRATION. REFER TO MECHANICAL
- MECHANICAL ROOF TOP UNIT #
- TAPERED 600x600 INSULATION "SLUMP" AT ROOF DRAIN
- COORDINATE W/ MECHANICAL DRAWINGS
- EXISTING ROOF DRAIN. ENSURE DRAIN IS CLEAN AND FUNCTIONING PROPERLY
- EXISTING MECHANICAL CURB
- EXISTING ROOF DRAIN TO REMAIN
- HIGH POINT (STRUCTURE)
- HIGH POINT (INSULATION)
- ELEVATION OF STRUCTURE AT LOW POINT RELATIVE TO HIGH POINT
- ELEVATION OF STRUCTURE AT HIGH POINT RELATIVE TO HIGH POINT
- ELEVATION OF TAPERED INSULATION AT LOW POINT RELATIVE TO INSULATION HIGH POINT
- ELEVATION OF TAPERED INSULATION AT HIGH POINT RELATIVE TO INSULATION HIGH POINT
- EXHAUST FAN UNIT #
- REFER TO MECHANICAL DRAWINGS
- ELEVATION OF NEW ROOF FINISHES RELIGIOUS TO 1/10 STUDS, 1/10 BLOCK OR 1/10 CURTAINWALL

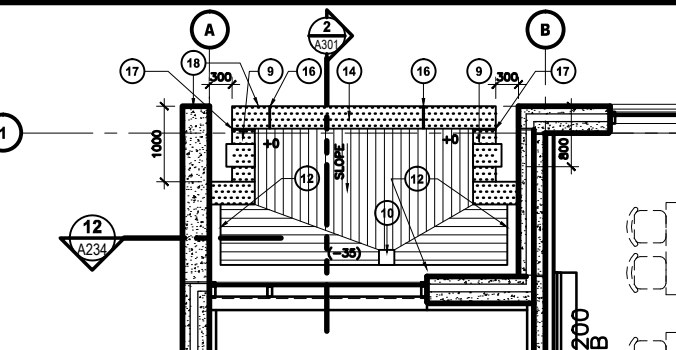
DRAWING NOTES

1. EXISTING LADDER WITH GAGE
2. EXISTING METAL GRATE LANDING
3. EXISTING ROOF HATCH
4. EXISTING CHIMNEY HOOD
5. EXISTING PAVEMENT
6. EXISTING CHIMNEY WITH NEW MECHANICAL AND FLASHING
7. EXISTING SCUPPER
8. NEW OVERFLOW SCUPPER IN TILT-UP CONCRETE PANEL WITH BRICK VENEER, REFER TO DETAILS.
9. NEW 3mm ALUMINUM OVERFLOW SCUPPER IN COMPOSITE ALUMINUM FASCIA, REFER TO SCUPPER SECTION DETAIL.
10. NEW SCUPPER ROOF DRAIN
11. NEW PREFINISHED METAL CAP FLASHING
12. NEW LOW ROOF CURB AT HIGH WALL C/W CAP FLASHING. TYPICAL CURB CONSTRUCTION
13. NEW OVERFLOW SCUPPER
14. TOP OF COMPOSITE ALUMINUM PANEL.
15. FACE OF EXTERIOR WALL BELOW
16. COMPOSITE METAL PANEL JOINT, ALIGN JOINT WITH CENTER OF CURTAIN WALL MULLION
17. COMPOSITE METAL PANEL JOINT
18. ALIGN COMPOSITE METAL PANEL FASCIA WITH FACE OF BRICK VENEER
19. STAINLESS STEEL HSS BEAMS. REFER TO STRUCTURAL DRAWINGS.
20. CRIMPED PREFINISHED METAL CAP FLASHING AT EXPANSION JOINT
21. EXISTING METAL CAP FLASHING
22. EXISTING GRAVEL STOP
23. EXISTING ROOF ASSEMBLY
24. PROVIDE NEW ROOF DECK INFILL TO MATCH EXISTING AND NEW ROOF ASSEMBLY TO MATCH AND TIE INTO EXISTING ROOF ASSEMBLY.
25. NEW PENHOUSE FOR PIPES AND CONDUITS PENETRATIONS, SEE ROOF DETAILS
26. NEW MECHANICAL CROSSOVERS, SEE MECHANICAL DRAWINGS
27. MODULAR GROSS OVER STAIR AND PLATFORM
28. NEW CONDENSING UNITS, SEE MECHANICAL DRAWINGS
29. EXISTING MECHANICAL CURBS TO REMAIN
30. EXISTING CONDENSING UNITS TO REMAIN
31. EXISTING ATTIC VENTILATION VENT STACK TO REMAIN
32. NEW EXHAUST FAN, SEE MECHANICAL DRAWINGS
33. EXISTING CHIMNEY TO REMAIN
34. EXISTING LADDER TO REMAIN
35. REMOVE AND REINSTALL EXISTING CHIMNEY HOOD AS REQUIRED TO INSTALL NEW MECHANICAL. REFER TO MECHANICAL FOR ADDITIONAL INFORMATION.

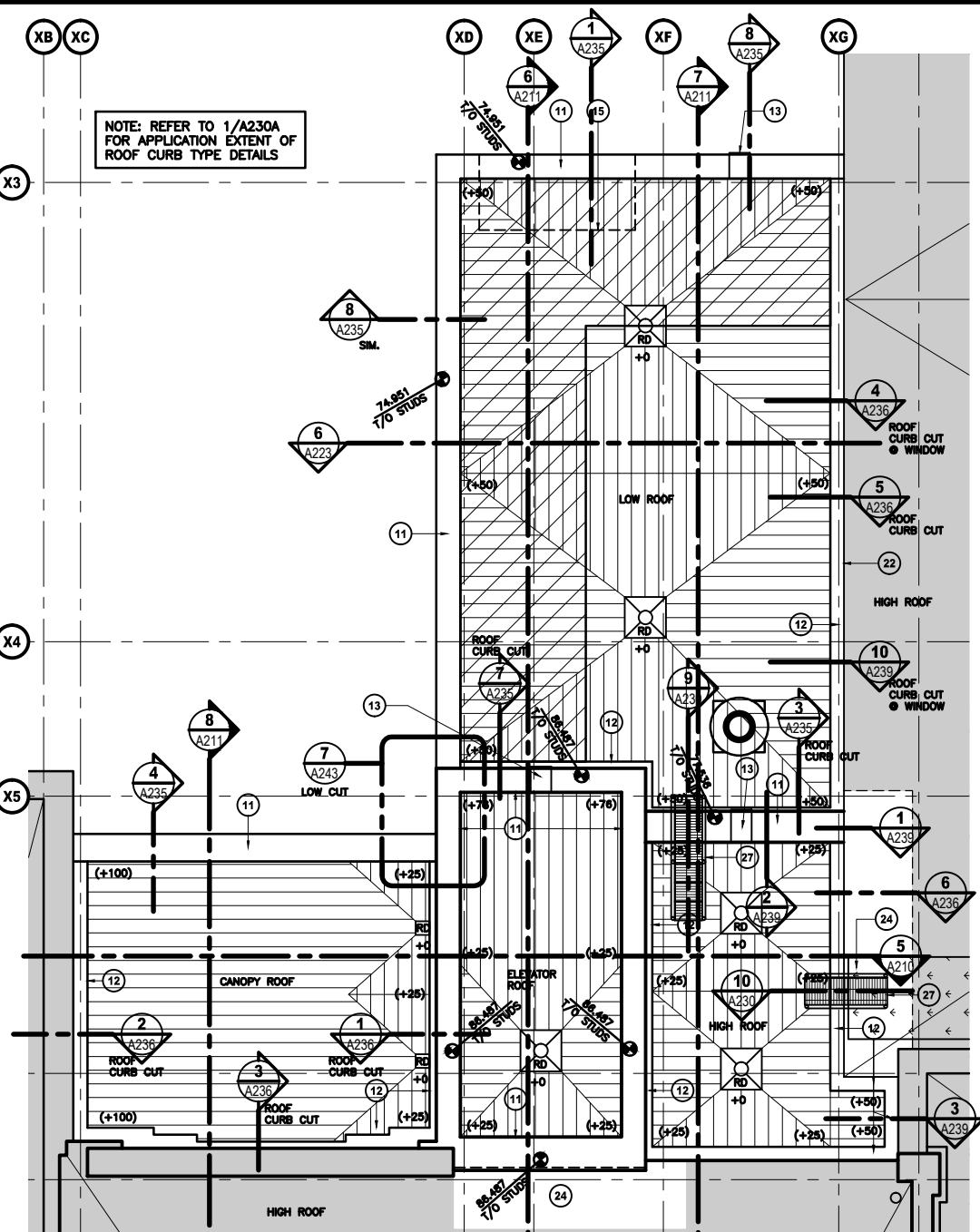
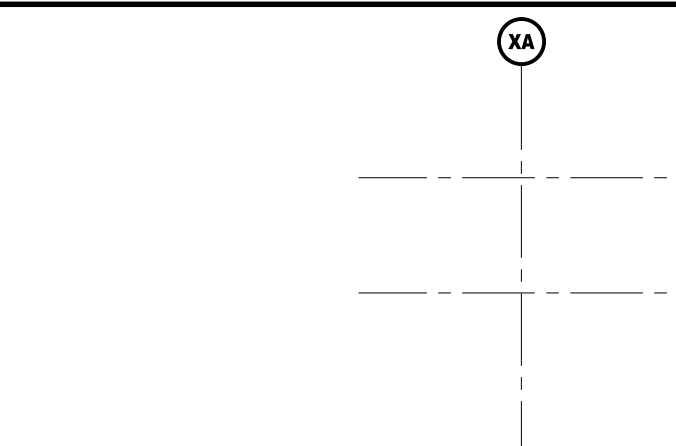
*[Signature]*

**DOUGLAS JAMES, MCIP, RPP**  
**MANAGER, DEVELOPMENT REVIEW - CENTRAL**  
**PLANNING, INFRASTRUCTURE & ECONOMIC**  
**DEVELOPMENT DEPARTMENT, CITY OF OTTAWA**

3 HIGH STAIR CANOPY  
A104 1:100

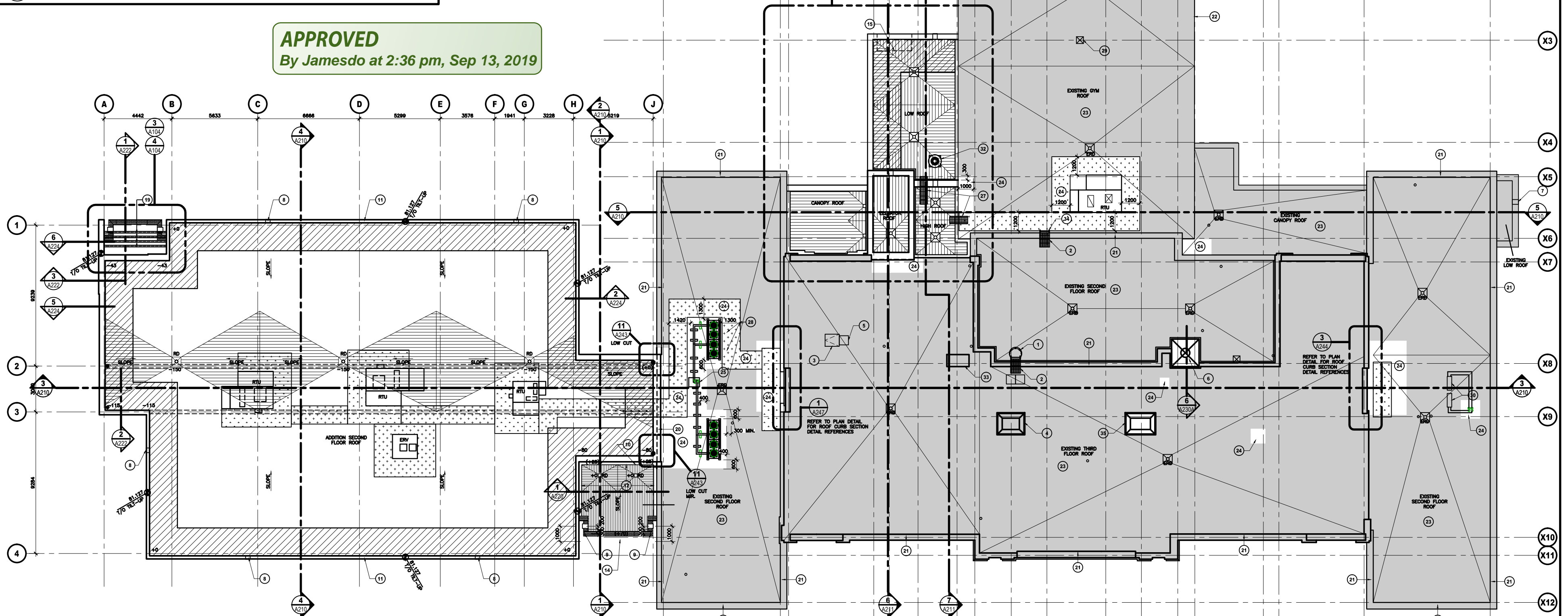


4 LOW STAIR CANOPY  
A104 1:100



2 NORTH ADDITION ROOF  
A104 1:100

**APPROVED**  
 By Jamesdo at 2:36 pm, Sep 13, 2019



1 ROOF PLAN  
A104 1:200

6	0	18/11/19	RESPONSE TO CITY COMMENTS 02
5	0	18/11/19	ISSUED FOR ADDENDUM #3
4	0	18/11/19	ISSUED FOR TENDER
3	0	18/11/19	ISSUED FOR OWNER REVIEW
2	0	18/11/19	ISSUED FOR BUILDING PERMIT
1	0	18/11/19	ISSUED FOR CLASS C ESTIMATE

LES IDEES, CONCEPTS, DISPOSITIONS ET PLANS MONTRES OU REPRESENTES PAR CE DESIGN APPROPRIEMENT A EDWARD J. CUHACI AND ASSOCIATES ARCHITECTS INC. ET ONT ETE CROQUES, ET DEVELOPPES POUR ETRE UTILISES DANS LE CADRE DU PRESENT PROJET. ILS NE DOIVENT PAS ETRE UTILISES A D'AUTRES FINS NI COMMUNIQUES A QU'UNE QUE SOIT SANS LA PERMISSION ECRITE DE EDWARD J. CUHACI AND ASSOCIATES ARCHITECTS INC.

L'ARCHITECTE DECLINE TOUTE RESPONSABILITE DECULQUANT DE PROBLEMES FAISANT SUITE AU NON RESPECT DES PLANS ET DEVIS OU DE L'INTENTION POURANT QUELS TRAVAILLENT, OU DE TOUTS PROBLEMES POURANT RESULTER DU DEFAUT DE TERS D'OBTENIR OU DE SUIVRE LES INSTRUCTIONS DE L'ARCHITECTE RELATIVES AUX ERREURS, OMISSIONS, INCONSISTENCES, AMBIGUITES OU CONTRADICTIONS ALLEGUES.

L'ENTREPRENEUR DOIT VERNIER TOUTES LES DIMENSIONS SUR PLACE ET INFORMER L'ARCHITECTE DE TOUT ECART AVANT LE DEBUT DES TRAVAUX. NE PAS MESSURER LES DEVIANTS A L'ECHELLE.

ALL IDEAS, DESIGNS, ARRANGEMENTS AND PLANS INDICATED OR REPRESENTED BY THIS DRAWING ARE OWNED BY AND THE PROPERTY OF EDWARD J. CUHACI AND ASSOCIATES INC. AND HAVE BEEN CREATED, DEVELOPED AND FORWARDED FOR USE ON AND IN CONNECTION WITH THE SPECIFIED PROJECT. NONE OF THE IDEAS, DESIGNS, ARRANGEMENTS OR PLANS SHALL BE USED BY OR DISCLOSED TO ANY PERSON, FIRM, OR CORPORATION FOR ANY PURPOSE WHATSOEVER WITHOUT THE WRITTEN PERMISSION OF EDWARD J. CUHACI AND ASSOCIATES INC.

THE ARCHITECT WAIVES ANY AND ALL RESPONSIBILITY AND LIABILITY FOR PROBLEMS WHICH ARISE FROM FAILURE TO FOLLOW THESE PLANS, SPECIFICATIONS, AND THE DESIGN INTENT THEY CONVEY, OR FOR PROBLEMS WHICH ARISE FROM OTHERS' FAILURE TO OBTAIN AND/OR FOLLOW THE ARCHITECT'S GUIDANCE WITH RESPECT TO ANY ERRORS, OMISSIONS, INCONSISTENCIES, AMBIGUITIES OR CONFLICTS WHICH ARE ALLEGED.

CONTRACTOR TO VERIFY ALL DIMENSIONS AND NOTIFY THE ARCHITECT OF ANY DISCREPANCIES BEFORE WORK COMMENCES. DO NOT SCALE DRAWINGS.



**EDWARD J. CUHACI & ASSOCIATES ARCHITECTS INC.**  
 1171 Steeles St. Suite 100, Ottawa, Ontario, K1P 6H7  
 Fax: (613) 236-1944 Telephone: (613) 236-7135 E-mail: info@cuhaci.com

PROJECT TITLE/TITRE DU PROJET  
 ELMDALE PUBLIC SCHOOL  
 ADDITION AND RENOVATION  
 49 IONA STREET, OTTAWA, ON  
 K1Y 3L9

OTTAWA-CARLETON DISTRICT SCHOOL BOARD  
 133 GREENBANK ROAD  
 NEPEAN, ONTARIO, K2H 6L3

DRAWING TITLE/TITRE DU DESSIN  
**ROOF PLAN**

SCALE	AS SHOWN	PROJ. NO.	1803	REV. NO.	3
DRAWN BY	SLTB	DRAWING/PRODUCTION			
CHECKED BY	JJ				
DATE	18 08 31	ACAD. FILE NUMBER	1803.A104.SPC1		

**A104**

D07-12-18-0194