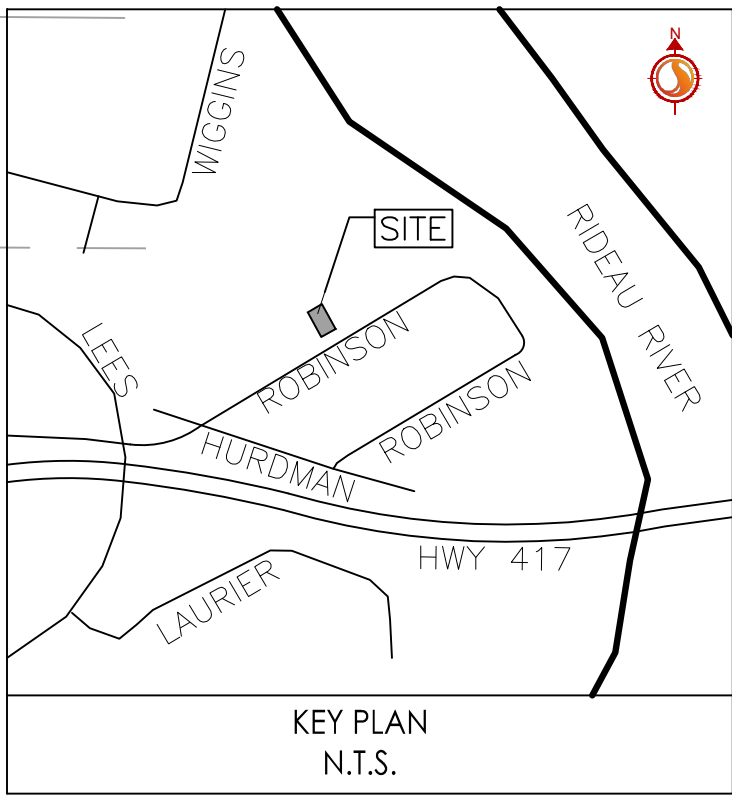
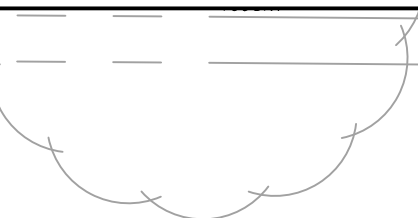




STEEL POST FENCE

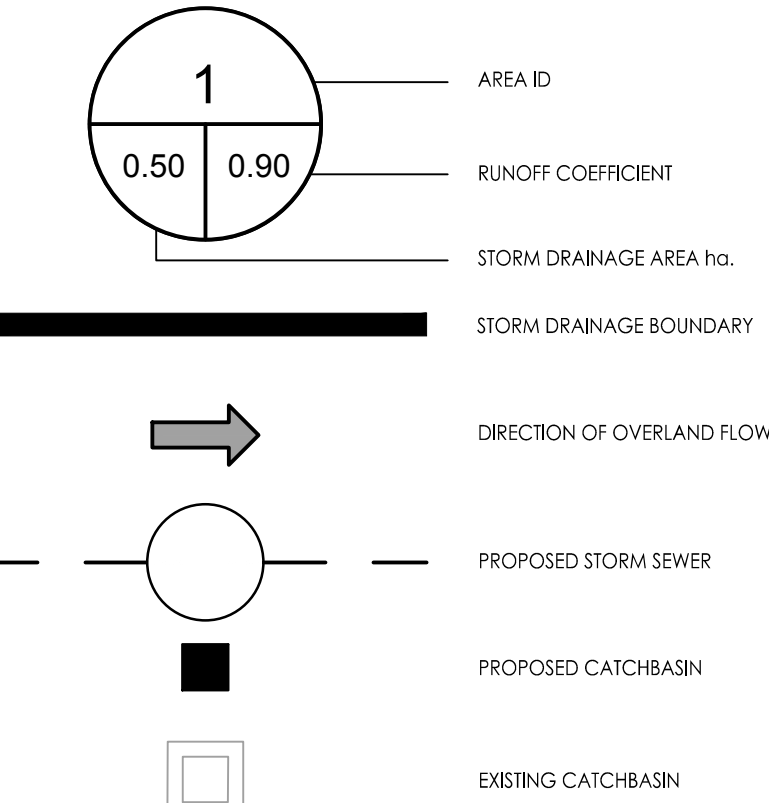


Stantec Consulting Ltd.
400 - 1331 Clyde Avenue
Ottawa ON
Tel. 613.722.4420
www.stantec.com

Copyright Reserved

The Contractor shall verify and be responsible for all dimensions. DO NOT scale the drawing - any errors or omissions shall be reported to Stantec without delay.
The Copyrights to all designs and drawings are the property of Stantec. Reproduction or use for any purpose other than that authorized by Stantec is forbidden.

Legend



Notes

Revision	By	Appd.	YY.MM.DD
2	WJ	KS	19.08.28
1	KK	KS	18.10.24

Permit-Seal	JP	KK	SL	18.06.13
	Dwn.	Chkd.	Dsgn.	YY.MM.DD

Client/Project
ROBINSON VILLAGE II
LIMITED PARTNERSHIP
3 STOREY APARTMENT
29 ROBINSON AVENUE
OTTAWA, ONTARIO

Title
STORM DRAINAGE PLAN

Project No.	Scale	Sheet	Revision
160401428	1:100	5 of 5	2

Drawing No. SD-1
DWG 17855

SCHEDULE OF ROOF RELEASE RATES			
BUILDING	HEAD (m)	ROOF DRAIN TYPE	100 YR RELEASE RATE (L/s)
BLDG	0.15	3 x WATTS R1100 ACCUTROL	2.83

SCHEDULE OF INLET CONTROL DEVICES					
STRUCTURE ID	DRAINAGE AREA ID	ORIFICE TYPE	ICD INVERT (m)	100 YR HEAD (m)	100 YR FLOW (L/s)
MH100	MH100	LMF 70	57.32	0.78	3.77

PROPOSED 4-STOREY
RESIDENTIAL BUILDING
BASEMENT FF=58.44
FIRST FLOOR FF=62.38
GARAGE ROOM FF=59.58
USF=57.03
MAX ROOF RELEASE RATE=2.83L/s

BLDG
0.040 0.90

TRENCH DRAIN 202
(TO BE CONNECTED TO INTERNAL
STORMWATER PLUMBING. REFER
TO MECHANICAL DWGS.)
(TO BE MAINTAINED CLEAN AND
FREE OF DEBRIS AT ALL TIMES)

10.1m-100mmØ STORM SERVICE @ 25.1%
TOWARDS EXISTING MAIN COMBINED SEWER c/w
FULL PORT BACKWATER VALVE
(FOR FOUNDATION DRAIN AND TRENCH DRAINS
201 AND 202 ONLY)
INV @ BLDG = 56.53

TRENCH DRAIN 201
(TO BE CONNECTED TO INTERNAL
STORMWATER PLUMBING. REFER
TO MECHANICAL DWGS.)
(TO BE MAINTAINED CLEAN AND
FREE OF DEBRIS AT ALL TIMES)

CBMH 300 1500mmØ
T/G=59.43
S INV (OUT) = 57.49

0.9m-200mmØ STORM CONNECTION @ 1.0% MIN.
TO INTERNAL PLUMBING c/w FULL PORT
BACKWATER VALVE. TO BE CONNECTED TO ROOF
DRAIN ONLY
E INV=57.84
W INV=57.85

25.0m-825mmØ BOSS 2000 HDPE PIPE @ 0.1%
N INV (IN) = 57.49
S INV (OUT) = 57.46

CANOPY ABOVE
MH 100 1500mmØ
c/w IPEX TEMPEST LMF 70 ICD 100YR RELEASE RATE=3.89L/s
T/G=59.57
N INV (IN) = 57.46
S INV (OUT) = 57.32

11.8m-200mmØ PVC STORM SERVICE LEAD @ 1.0% MIN.
TOWARDS EXISTING MAIN COMBINED SEWER

SITE BENCH MARK TOP OF
SPINDLE OF EX. FIRE HYDRANT
ELEV.=62.45m

CONNECT TO EX. 1500mmØ COMBINED SEWER
EX. 1500mmØ CBY = 54.354
EX. 1500mmØ SPRINGLINE = 53.604
EX. 1500mmØ INV = 52.854
NEW 100mmØ FD. INV = 54.00

CONNECT TO EX. 225mmØ COMBINED SEWER
EX. 225mmØ INV = 57.094
EX. 225mmØ SPRINGLINE = 57.204
NEW 200mm Ø INV = 57.20

ROBINSON AVENUE

X:\Projects\160401428\160401428-01-160401428.dwg
20/10/2018 11:28:44 AM
20/10/2018 11:28:44 AM

ORIGINAL SHEET - ARCH D