

LOCATION PLAN

SITE INFORMATION

LEGAL DESCRIPTION: PART OF LOT 11 CONCESSION 2 GEOGRAPHIC TOWNSHIP OF HUNTLEY CITY OF OTTAWA R15(19x) AND RC(120x)

ZONING: Required (R15) Provided (RC)

LOT AREA (min.) 10,000 sq. m. 481,421.7 sq. m.

LOT WIDTH (min.) 75 m. 1,069.1 m.

SETBACKS: REAR 10.0 m 201.9 m; CORNER SIDE YD 4.0 m 367.6 m; FRONT YARD 4.0 m 35.1 m; MAX. BLDG. HT. 12.0 m 4.3 m; LOT COVERAGE 30% Max 0.2%; LANDSCAPE AREA 20% Min 96.0%

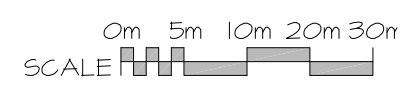
GROSS FLOOR AREA (PER ZONING BYLAW): BASEMENT 4133 sq. m.; GROUND FLOOR 660.86 sq. m.; TOTAL 102.38 sq. m.

PARKING REQUIRED: 1 space/100 sq. m. of GFA; TOTAL (T X 102/100) 49 SPACES; PARKING PROVIDED 84 SPACES

LOADING SPACES REQUIRED: 0 - Phase One (Less than 1000 sq. m.); 1 - Phase Two (1000-1999 sq. m.); LOADING SPACES PROVIDED 1 - (To serve Phase One and Phase Two)

BICYCLE SPACES REQUIRED: 1/500 sq. m. GFA 0 SPACES (Site is outside Village of Carp)

DEVELOPMENT AREA: BUILDING FOOTPRINT 1/211.40 sq. m.; PARKING FOOTPRINT 3/143.35 sq. m.; TOTAL 4/212.75 sq. m.



LEGAL SURVEY INFORMATION TAKEN FROM:

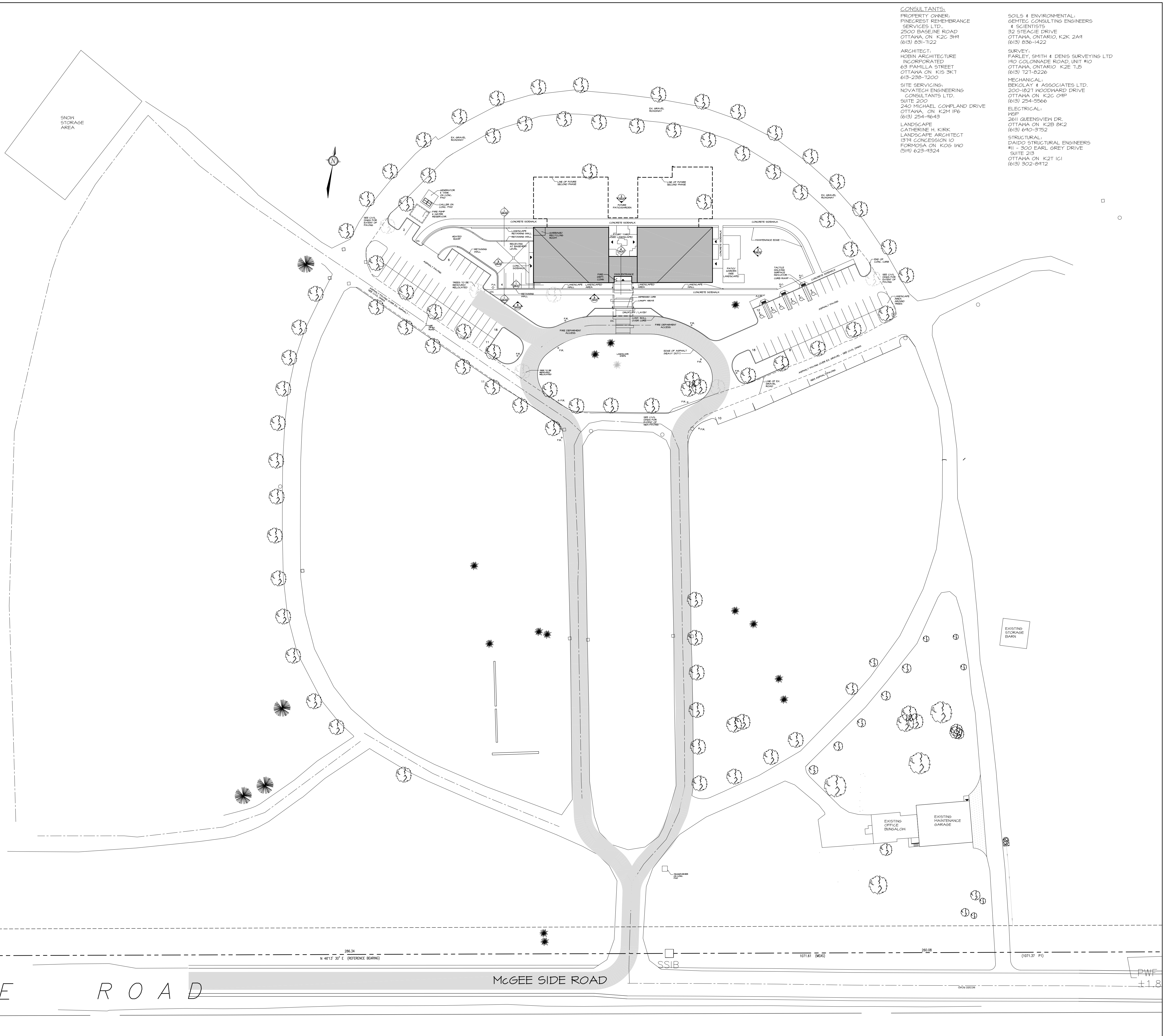
PLAN OF SURVEY OF

PART OF LOT 11 CONCESSION 2 GEOGRAPHIC TOWNSHIP OF HUNTLEY CITY OF OTTAWA FARLEY, SMITH & DENIS SURVEYING LTD. 2018

TOPOLOGICAL SURVEY INFORMATION TAKEN FROM:

GRADING AND SERVICING PLAN 2037 MCGEE SIDE ROAD, CITY OF OTTAWA PINECREST REMEMBRANCE SERVICES HIGHLAND PARK REMEMBRANCE

NOVATECH ENGINEERING



CONSULTANTS:
PROPERTY OWNER: PINECREST REMEMBRANCE SERVICES LTD. 2500 BASELINE ROAD OTTAWA, ON K2C 3H1 (613) 831-7122
ARCHITECT: HOBIN ARCHITECTURE INCORPORATED 63 PAVILLA STREET OTTAWA ON K1S 3K7 613-238-7200
SITE SERVICING: NOVATECH ENGINEERING CONSULTANTS LTD. SITE 200 240 MICHAEL COXPLAND DRIVE OTTAWA, ON K2M 1P6 (613) 294-9643
LANDSCAPE ARCHITECT: CATHERINE H. KIRK LANDSCAPE ARCHITECT 1374 CONCESSION 10 FORMOSA ON K0G 1K0 (519) 623-1524

SOILS & ENVIRONMENTAL: GEMTEC CONSULTING ENGINEERS & SCIENTISTS 32 STEADIE DRIVE OTTAWA, ONTARIO, K2K 2A9 (613) 836-1422
SURVEY: FARLEY, SMITH & DENIS SURVEYING LTD 190 COLONNADE ROAD, UNIT #10 OTTAWA, ONTARIO K2E 1L5 (613) 121-8226
MECHANICAL: BEGLAY & ASSOCIATES LTD 200-1821 HOOPLAND DRIVE OTTAWA ON K2C 0H9 (613) 254-5566
ELECTRICAL: REP 2611 QUEENSWAY DR. OTTAWA ON K2B 8K2 (613) 640-3752
STRUCTURAL: DAVID STRUCTURAL ENGINEERS #11 - 300 EARL GREY DRIVE SUITE 215 OTTAWA ON K2T 1C1 (613) 302-8412



5	AUG. 29/19	RE-ISSUED - SITE PLAN CTRL
4	JUN. 24/19	ISSUED FOR BUDGETING
3	JUNE 17/19	ISSUED - SITE PLAN CONTROL
2	MAY 1/19	ISSUED FOR INFORMATION
1	AUG. 31/18	ISSUED FOR COSTING
no.	date	revision

It is the responsibility of the appropriate contractor to check and verify all dimensions on site and report all errors and/or omissions to the architect.

All contractors must comply with all pertinent codes and by-laws.

Do not scale drawings.

This drawing may not be used for construction until signed.

Copyright reserved.



Hobin Architecture Incorporated
63 Pavilla Street
Ottawa, Ontario
Canada K1S 3K7
T: 613-238-7200
F: 613-235-2005
E: mail@hobinarc.com
hobinarc.com

PROJECT/LOCATION:
HIGHLAND PARK REMEMBRANCE
2037 MCGEE SIDE RD

DRAWING TITLE:
SITE CONTEXT PLAN

DRAWN BY: BB	DATE: 17/12/07	SCALE: 1:600
PROJECT: 1513		DRAWING NO.:
PROJECT NORTH		A1.01
TRUE NORTH		REVISION NO.:

A1.01 Site Plan

FILE No. D07-12-19-0112