

Copyright Reserved

The Contractor shall verify and be responsible for all dimensions. DO NOT scale the drawing - any errors or omissions shall be reported to Stantec without delay.
The Copyrights to all designs and drawings are the property of Stantec. Reproduction or use for any purpose other than that authorized by Stantec is forbidden.

Legend

- PROPOSED SILT FENCE BOUNDARY AS PER OPSD 219.110
- PROPOSED STRAW BALE LOCATION AS PER OPSD 219.100
- PROPOSED CATCH BASIN PROTECTION AS PER DETAIL
- PROPOSED MUD MAT LOCATION
- EXISTING SWALE
- PROPOSED VALVE BOX
- PROPOSED VALVE CHAMBER
- PROPOSED FIRE HYDRANT
- PROPOSED SANITARY SEWER MANHOLE
- PROPOSED STORM SEWER MANHOLE
- PROPOSED CATCHBASIN

Best Management Practices

CONTRACTOR TO PROVIDE EROSION AND SEDIMENT CONTROLS (BEST MANAGEMENT PRACTICES) DURING CONSTRUCTION OF THIS PROJECT.

EROSION MUST BE MINIMIZED AND SEDIMENTS MUST BE REMOVED FROM CONSTRUCTION SITE RUN-OFF IN ORDER TO PROTECT DOWNSTREAM AREAS. DURING ALL CONSTRUCTION, EROSION AND SEDIMENTATION SHOULD BE CONTROLLED BY THE FOLLOWING TECHNIQUES:

- LIMIT THE EXTENT OF EXPOSED SOILS AT ANY GIVEN TIME.
- REVEGETATE EXPOSED AREAS AND SLOPES AS SOON AS POSSIBLE.
- MINIMIZE AREA TO BE CLEARED AND GRUBBED.
- PROTECT EXPOSED SLOPES WITH PLASTIC OR SYNTHETIC MULCHES.
- INSTALL CATCH BASIN INSERTS OR EQUIVALENT IN ALL PROPOSED CATCH BASINS AND CATCH BASIN MANHOLES AND IN ALL EXISTING CATCH BASINS THAT WILL RECEIVE RUN-OFF FROM THE SITE.
- A SILT FENCE SHALL BE INSTALLED AROUND THE PERIMETER OF ALL AND ANY STOCKPILES OF MATERIAL TO BE USED OR REMOVED FROM SITE. (LOCATION TO BE DETERMINED)
- A VISUAL INSPECTION SHALL BE DONE DAILY ON SEDIMENT CONTROL MEASURES AND CLEANED OF ANY ACCUMULATED SILT AS REQUIRED. THE DEPOSITS WILL BE DISPOSED OFF-SITE AS PER THE REQUIREMENTS OF THE CONTRACT.
- SEDIMENT CONTROL BARRIERS MAY ONLY BE REMOVED TEMPORARILY WITH APPROVAL OF CONTRACT ADMINISTRATOR TO ACCOMMODATE CONSTRUCTION OPERATIONS. ALL AFFECTED BARRIERS MUST BE REINTEGRATED AT NIGHT WHEN CONSTRUCTION IS COMPLETED. NO REMOVAL WILL OCCUR IF THERE IS A SIGNIFICANT RAINFALL EVENT ANTICIPATED (>10mm) UNLESS A SEWER DEVICE HAS BEEN INSTALLED TO PROTECT EXISTING STORM AND SANITARY SEWER SYSTEMS, OR DOWNSTREAM WATERCOURSES.
- NO REFUELING OR CLEANING OF EQUIPMENT IS PERMITTED NEAR ANY EXISTING WATERWAY.
- CONTRACTOR SHALL REMOVE SEDIMENT CONTROL MEASURES WHEN, IN THE OPINION OF THE CONTRACT ADMINISTRATOR, THE MEASURE(S) IS NO LONGER REQUIRED. NO CONTROL MEASURES SHALL BE PERMANENTLY REMOVED WITHOUT PRIOR WRITTEN AUTHORIZATION FROM THE CONTRACT ADMINISTRATOR.
- THE CONTRACTOR SHALL PERIODICALLY, OR WHEN REQUESTED BY THE CONTRACT ADMINISTRATOR, CLEAN OUT ACCUMULATED SEDIMENTS AS REQUIRED.
- THE CONTRACTOR SHALL IMMEDIATELY REPORT TO THE ENGINEER ANY ACCIDENTAL DISCHARGES OF SEDIMENT MATERIAL INTO THE WATERCOURSE. APPROPRIATE RESPONSE MEASURES, INCLUDING ANY REPAIRS TO EXISTING CONTROL MEASURES OR THE IMPLEMENTATION OF ADDITIONAL CONTROL MEASURES, SHALL BE CARRIED OUT BY THE CONTRACTOR WITHOUT DELAY.
- CONTRACTOR SHALL INSTALL MUD MATS AT ENTRANCE TO THE SITE.
- STORMWATER SWALES TO BE COVERED WITH HYDRO-SEED AND MULCH.

2	REVISED AS PER CITY COMMENTS	J.P.	DCT	19.08.29
1	ISSUED TO CITY FOR SPA	M.J.S.	DCT	19.05.15
Revision		By	Appd.	YY.MM.DD

File Name:	160401433-08	MJS	DT/SG	MJS	19.05.14
		Dwn.	Chkd.	Dsgn.	YY.MM.DD

Permit-Seal

Client/Project

MATTAMY (MONARCH) LIMITED
50 Hines Road, suite 100

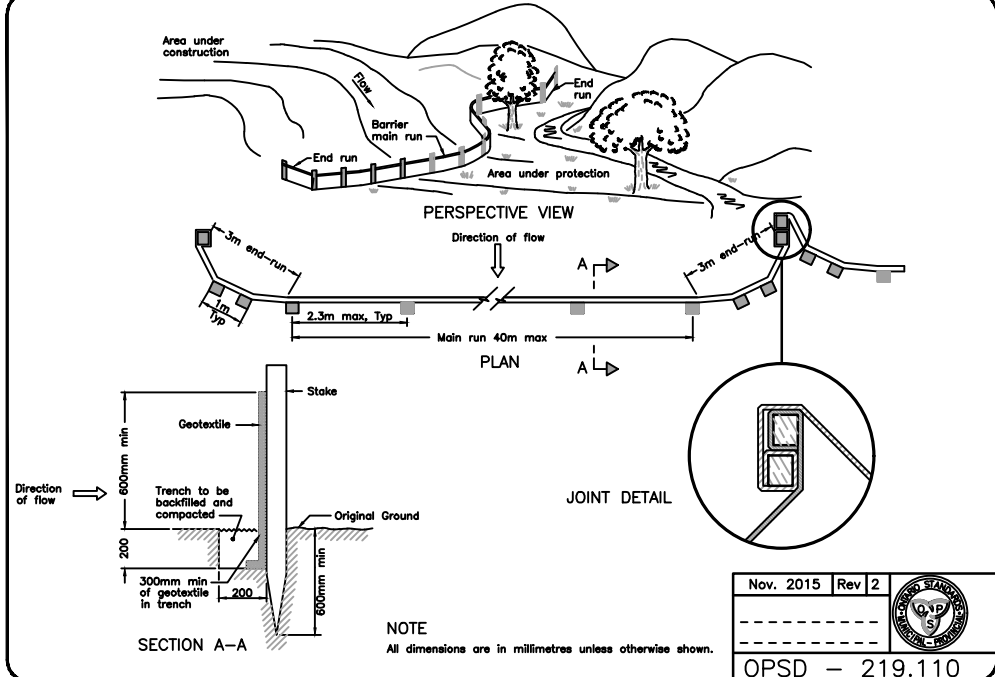
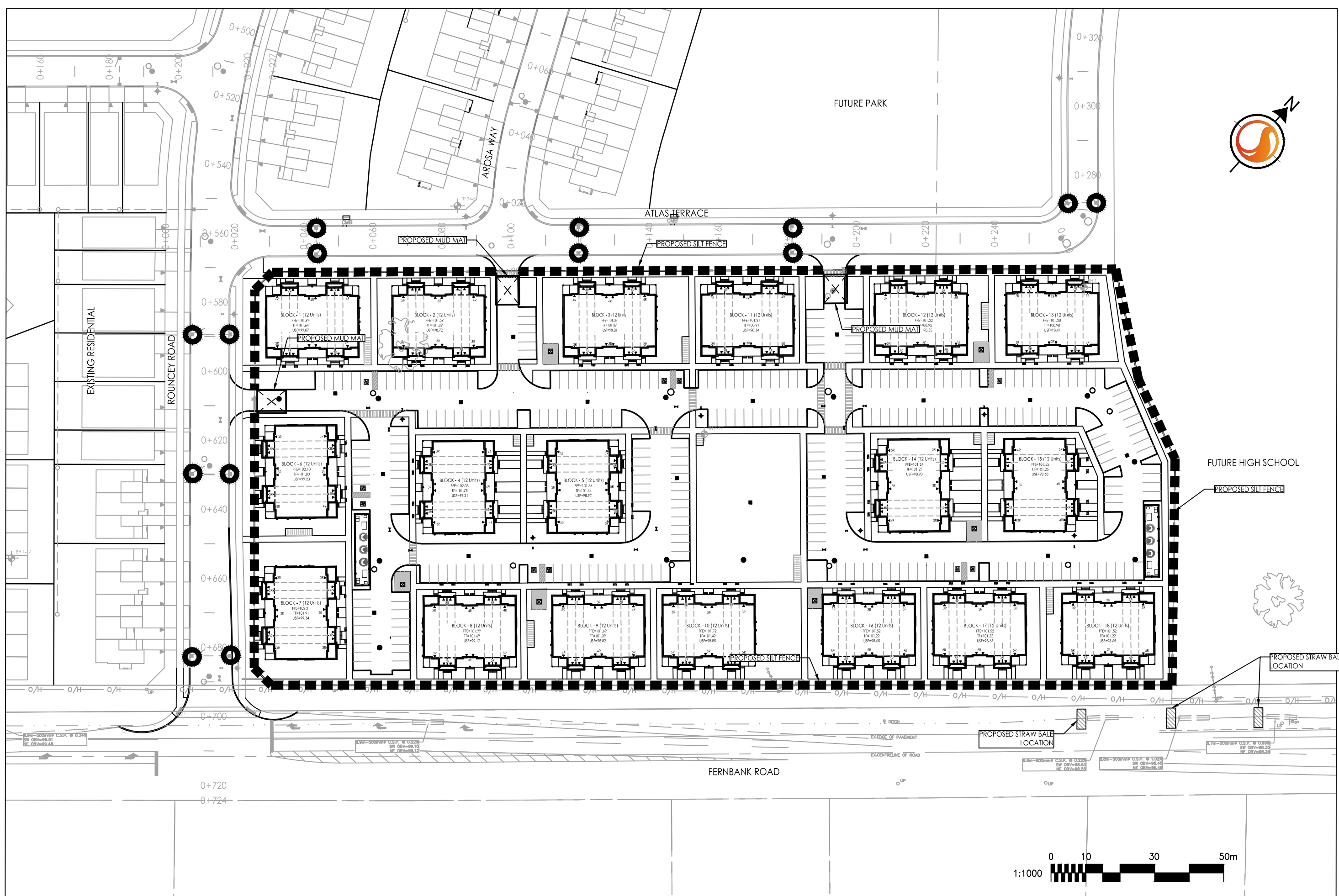
BLACKSTONE BLOCK 366
5441 AND 5505 FERNBANK ROAD
OTTAWA, ON

Title

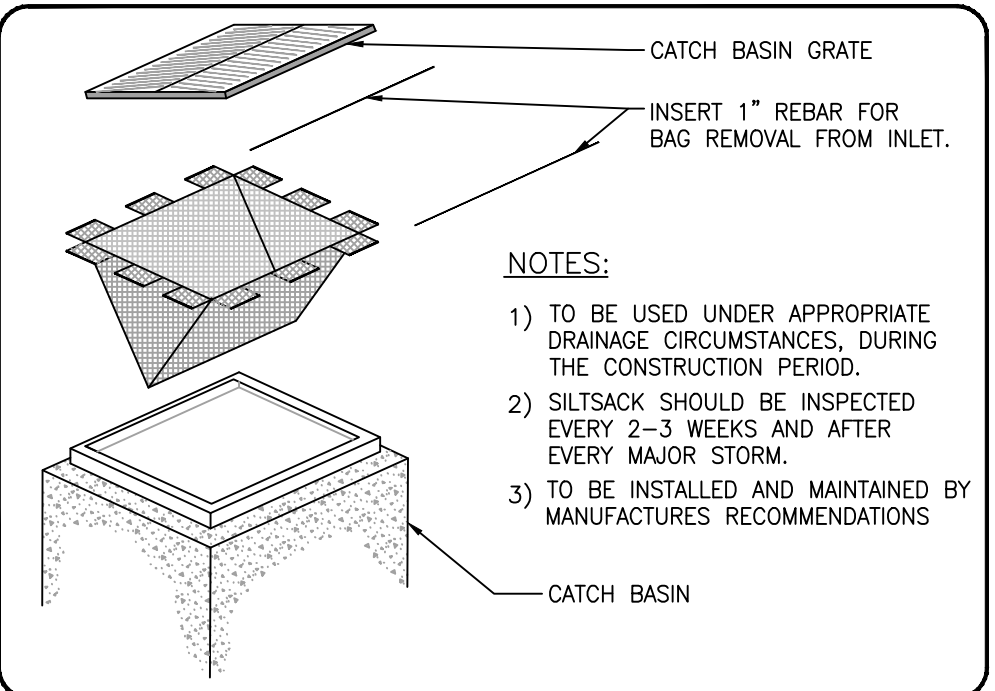
EROSION CONTROL PLAN
AND DETAIL SHEET

Project No.	Scale
160401433	

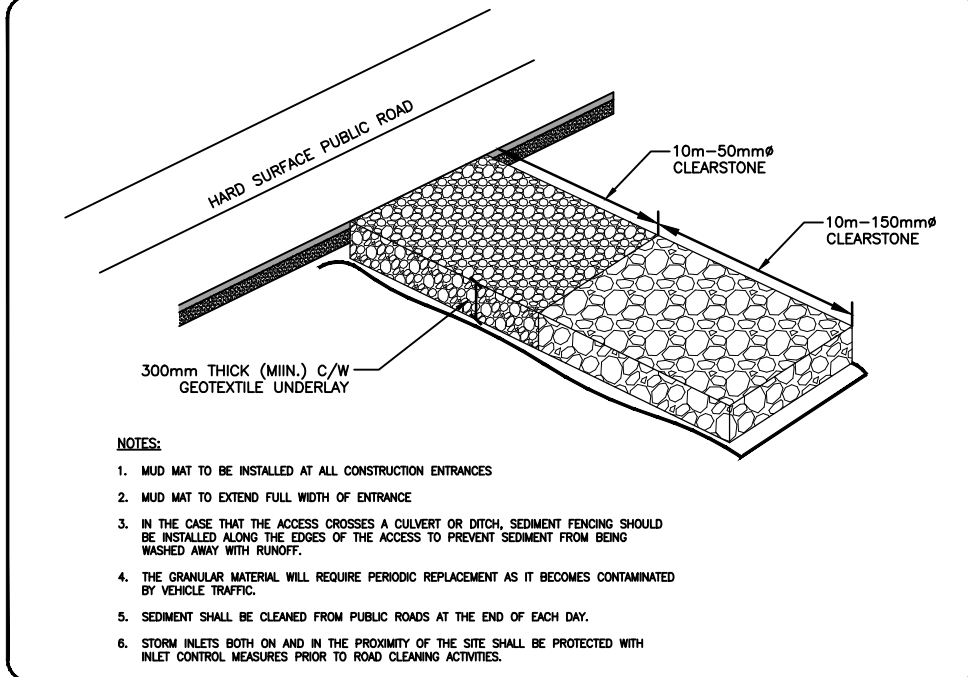
Drawing No.	Sheet	Revision
EC/DS-1	5 of 7	2



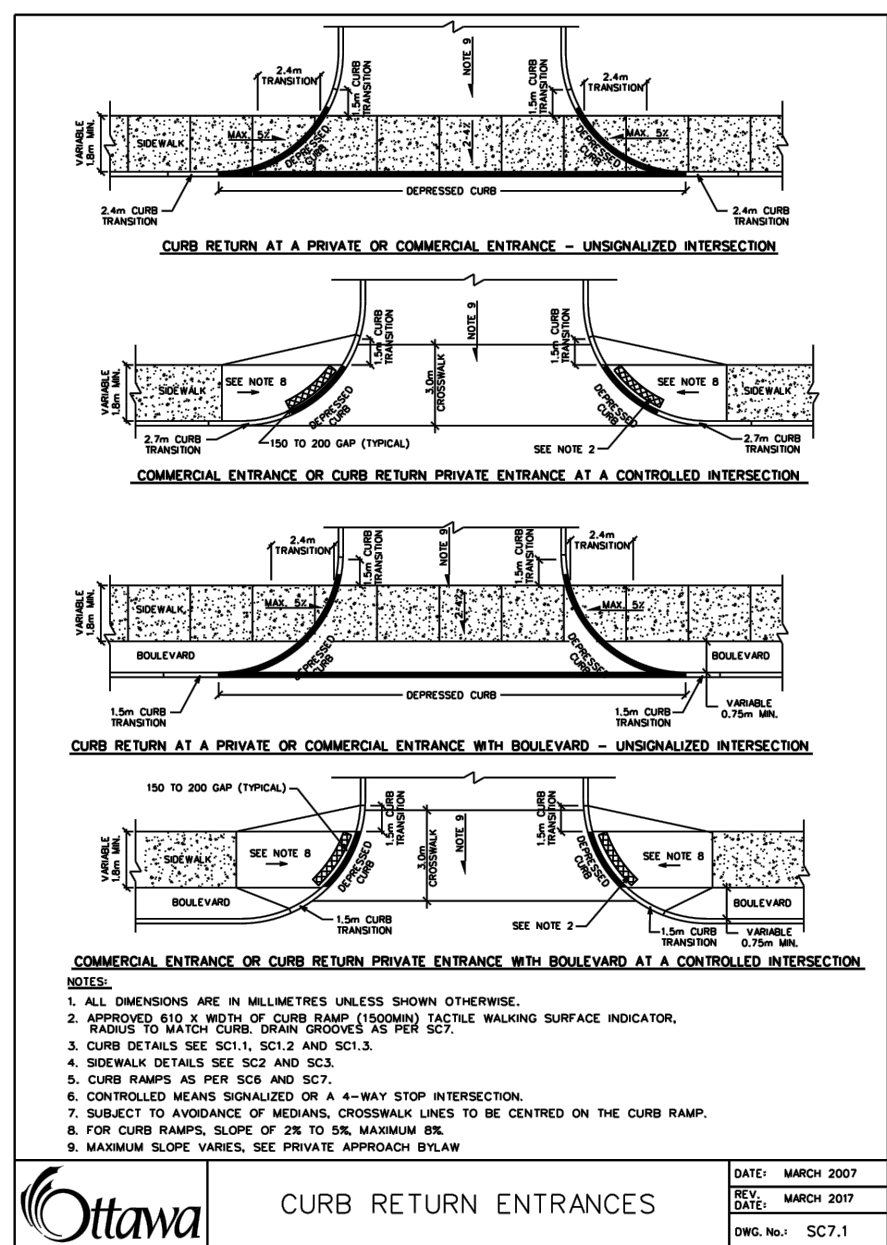
LIGHT DUTY SILT FENCE BARRIER
SCALE: N.T.S.



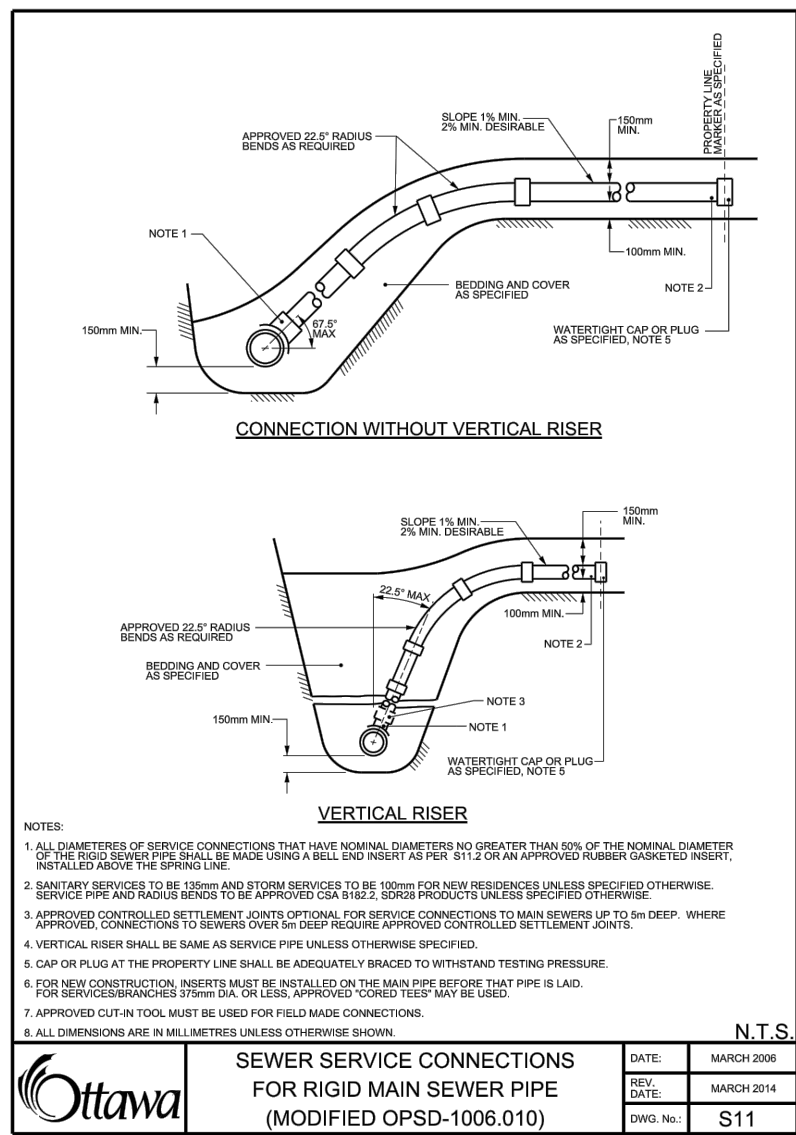
ROADSIDE CATCH BASIN PROTECTION DETAIL:
TERRAFIX SILTSACK
SCALE: N.T.S.



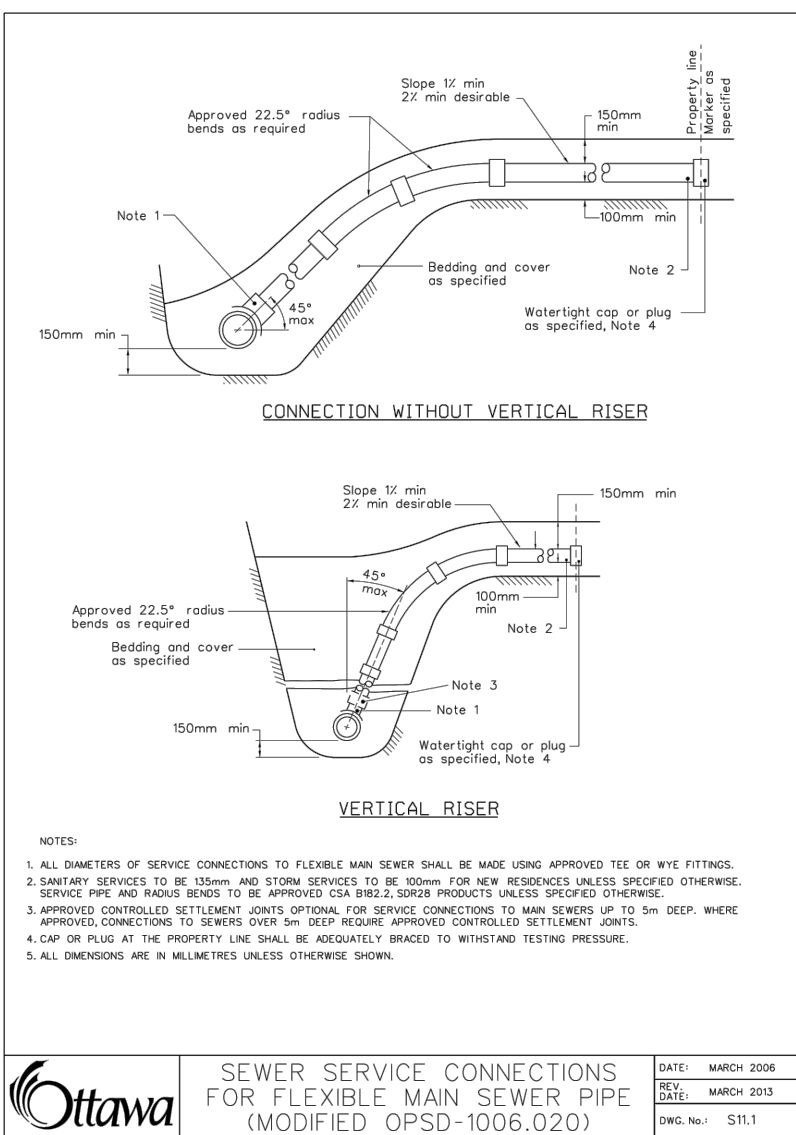
MUD MAT ENTRANCE DETAIL
SCALE: N.T.S.



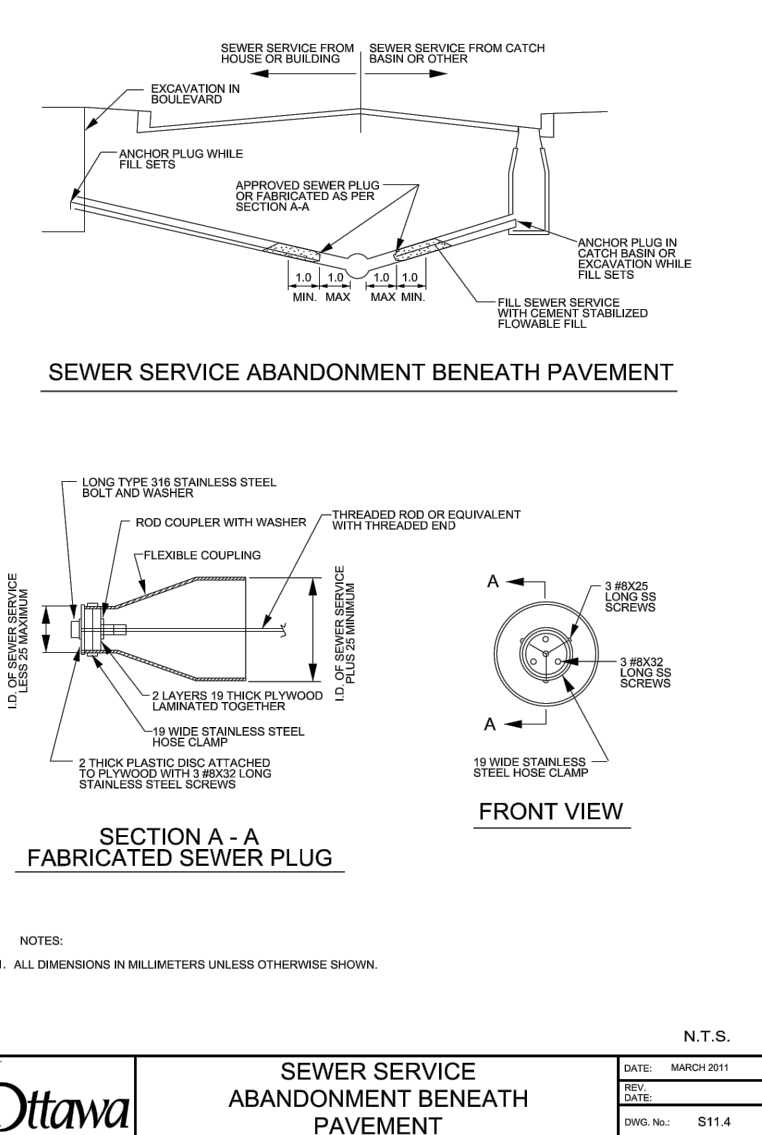
CURB RETURN ENTRANCES
SCALE: N.T.S.



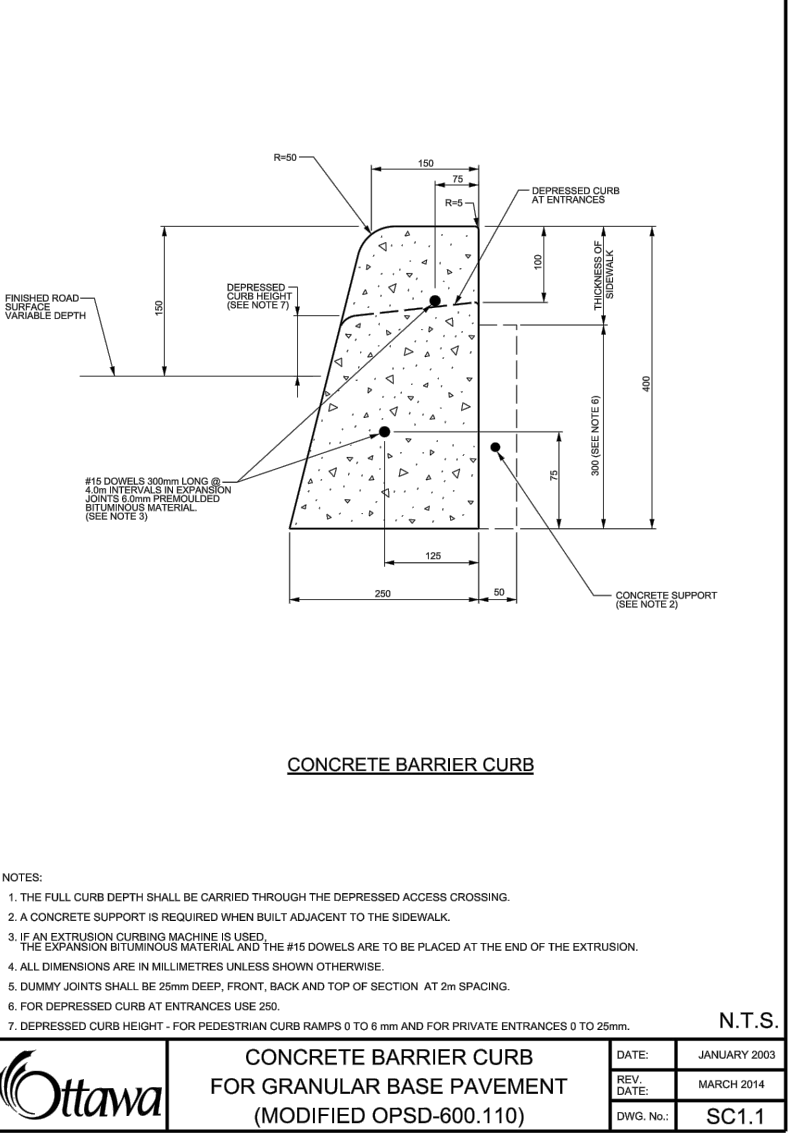
SEWER SERVICE CONNECTIONS
FOR RIGID MAIN SEWER PIPE
(MODIFIED OPSD-1006.010)
SCALE: N.T.S.



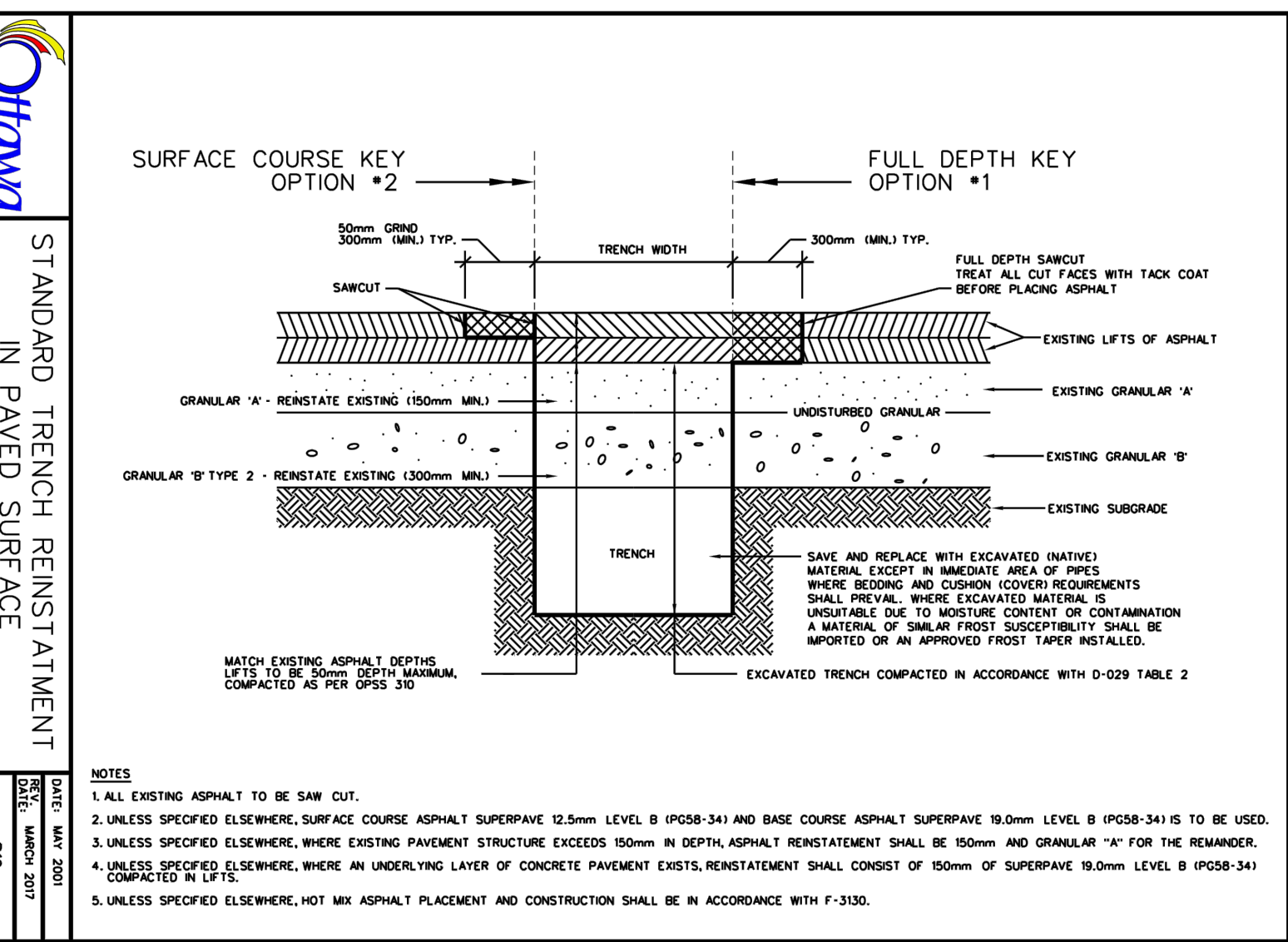
SEWER SERVICE CONNECTIONS
FOR FLEXIBLE MAIN SEWER PIPE
(MODIFIED OPSD-1006.020)
SCALE: N.T.S.



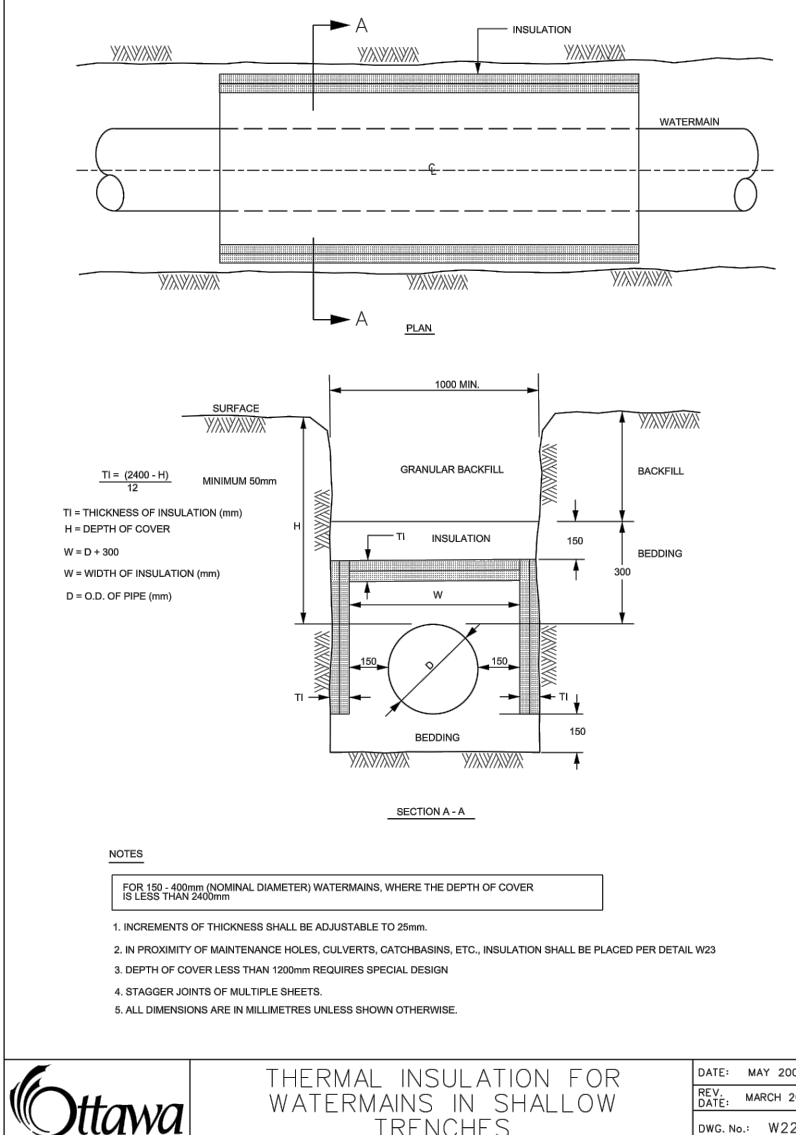
SEWER SERVICE
ABANDONMENT BENEATH
PAVEMENT
SCALE: N.T.S.



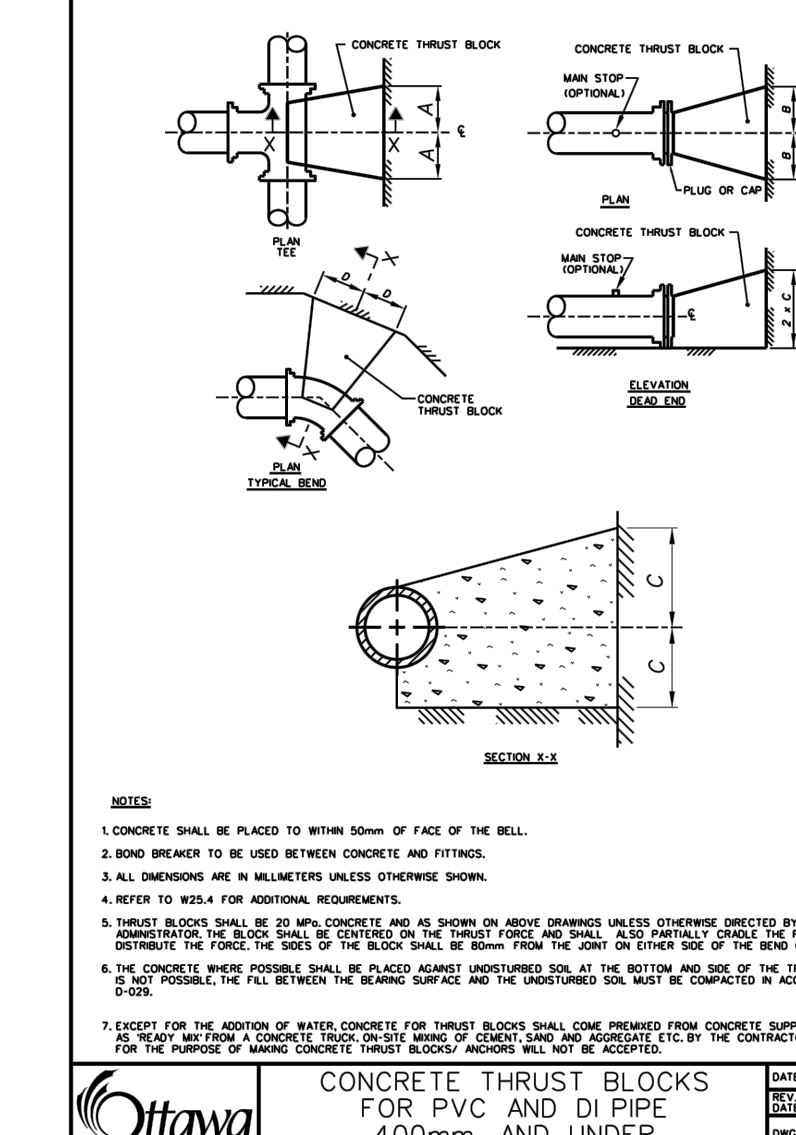
CONCRETE BARRIER CURB
FOR GRANULAR BASE PAVEMENT
(MODIFIED OPSD-600.110)
SCALE: N.T.S.



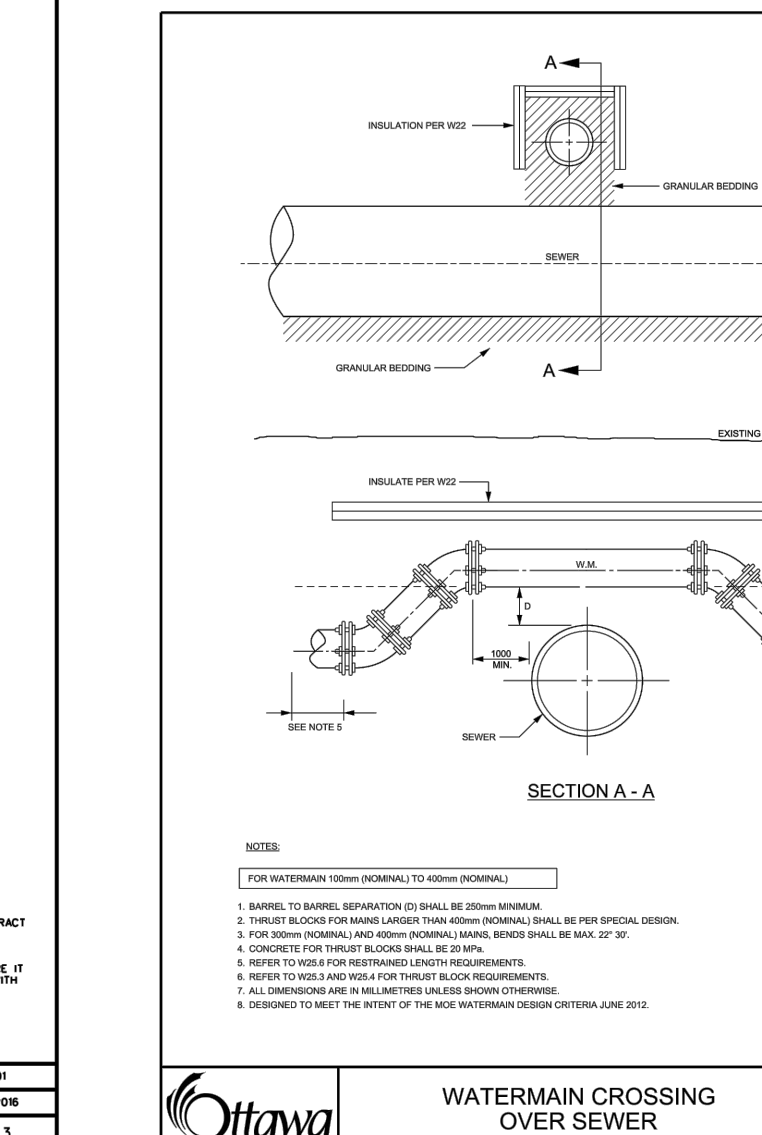
STANDARD TRENCH REINSTATEMENT
IN PAVED SURFACE
SCALE: N.T.S.



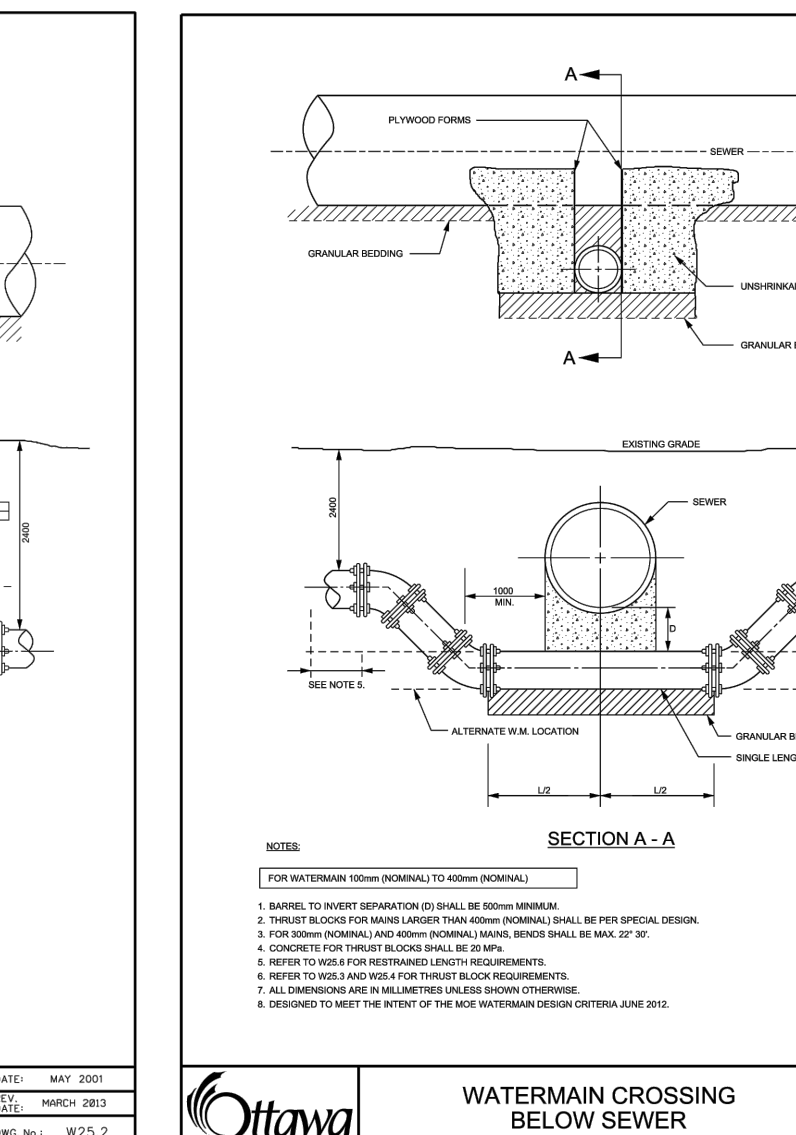
THERMAL INSULATION FOR
WATERMAINS IN SHALLOW
TRENCHES
SCALE: N.T.S.



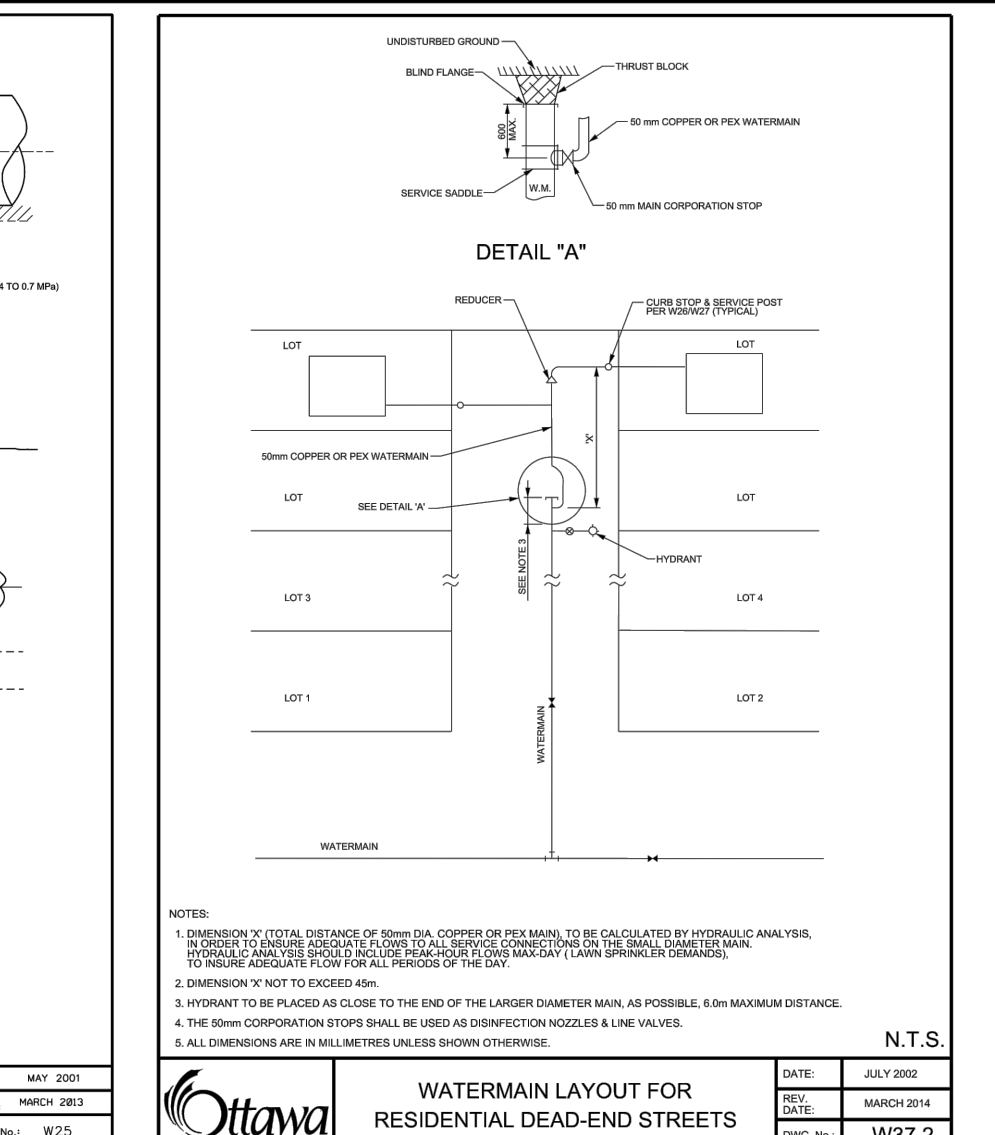
CONCRETE THRUST BLOCKS
FOR PVC AND DI PIPE
400mm AND UNDER
SCALE: N.T.S.



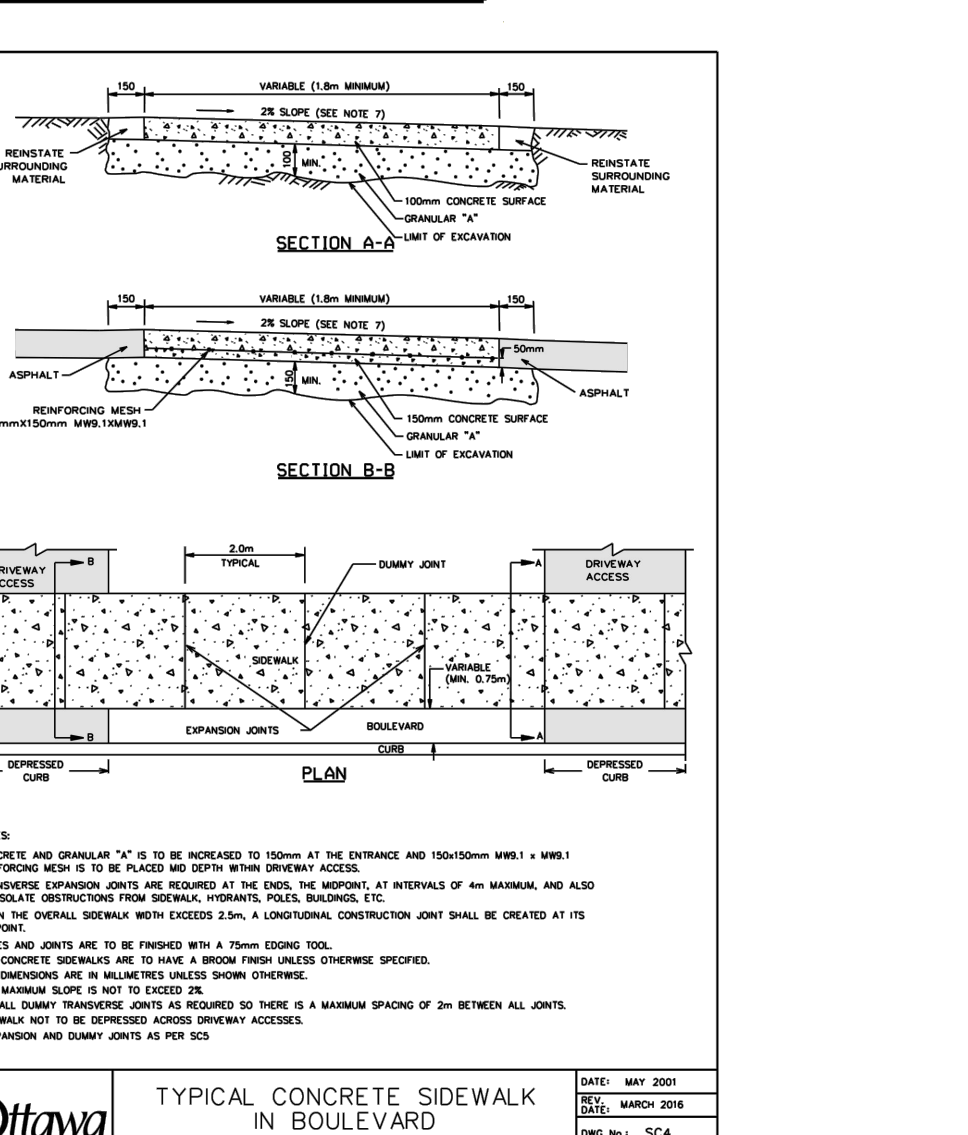
WATERMAIN CROSSING
OVER SEWER
SCALE: N.T.S.



WATERMAIN CROSSING
BELOW SEWER
SCALE: N.T.S.



WATERMAIN LAYOUT FOR
RESIDENTIAL DEAD-END STREETS
SCALE: N.T.S.



TYPICAL CONCRETE SIDEWALK
IN BOULEVARD
SCALE: N.T.S.