

DRAWING NOTES

1.0 GENERAL

- 1.1 CONTRACTOR TO VERIFY ALL DIMENSIONS PRIOR TO CONSTRUCTION.
- 1.2 DO NOT SCALE DRAWINGS.
- 1.3 CONTRACTOR TO REPORT ALL DISCOVERIES OF ERRORS, OMISSIONS OR DISCREPANCIES TO THE ARCHITECT OR DESIGN ENGINEER AS APPLICABLE.
- 1.4 USE ONLY THE LATEST REVISED DRAWINGS OR THOSE THAT ARE MARKED "ISSUED FOR CONSTRUCTION".
- 1.5 ALL CONSTRUCTION SHALL COMPLY WITH CURRENT CITY OF OTTAWA STANDARDS AND SPECIFICATIONS.
- 1.6 THIS DRAWING SHALL BE READ IN CONJUNCTION WITH ALL RELEVANT DRAWINGS AND SPECIFICATIONS.
- 1.7 FOR LEGAL SURVEY INFORMATION REFER TO REGISTERED PLAN.
- 1.8 REFER TO SITE PLAN BY P-SQUARED CONCEPTS INC.
- 1.9 CONTRACTOR TO IMPLEMENT EROSION AND SEDIMENT CONTROL MEASURES AS IDENTIFIED IN THE EROSION AND SEDIMENT CONTROL PLAN TO THE SATISFACTION OF THE CITY OF OTTAWA, PRIOR TO UNDERTAKING ANY SITE ALTERATIONS (FILLING, GRADING, REMOVAL OF VEGETATION, ETC.), DURING ALL PHASES OF THE SITE PREPARATION AND CONSTRUCTION. THE MEASURES ARE TO BE MAINTAINED TO THE SATISFACTION OF THE ENGINEER AND CITY OF OTTAWA IN ACCORDANCE WITH THE BEST MANAGEMENT PRACTICES FOR EROSION AND SEDIMENT CONTROL. SHOULD ANY ADDITIONAL MEASURES BE REQUIRED TO ADDRESS FIELD CONDITIONS THEY SHALL BE INSTALLED AS DIRECTED BY THE ENGINEER OR THE CITY OF OTTAWA. SUCH ADDITIONAL MEASURES MAY INCLUDE BUT NOT BE LIMITED TO INSTALLATION OF FILTER CLOTHS ACROSS MANHOLE AND CATCHBASIN LIDS TO PREVENT SEDIMENT FROM ENTERING THE STRUCTURE AND INSTALLATION AND MAINTENANCE OF A LIGHT DUTY SILT FENCE BARRIER AS REQUIRED.
- 1.10 ALL IRON WORK ELEVATIONS SHOWN ARE APPROXIMATE AND ARE SUBJECT TO MINOR ADJUSTMENTS AS DETERMINED BY THE ENGINEER.
- 1.11 ALL CONCRETE CURBS AND SIDEWALKS TO CONFORM TO O.P.S. AND CONSTRUCTED TO CITY STANDARDS. ALL ONSITE CURBS TO BE BARRIER TYPE, WITH DEPRESSIONS AS NOTED.
- 1.12 ALL CONCRETE SHALL BE "NORMAL PORTLAND CEMENT" IN ACCORDANCE WITH O.P.S.S. 1350 AND SHALL ACHIEVE A MINIMUM STRENGTH OF 30MPa AT 28 DAYS.
- 1.13 ALL CONSTRUCTION TRAFFIC TO ACCESS SITE FROM WOODROFFE AVENUE.
- 1.14 FOR GEOTECHNICAL REPORT SEE GEOTECHNICAL INVESTIGATION PROPOSED COMMERCIAL BUILDING - 2800 WOODROFFE AVENUE, BY GEMTEC CONSULTING ENGINEERS AND SCIENTISTS.
- 1.15 CONTRACTOR TO PROTECT EXISTING INFRASTRUCTURE AND PROPERTY SUCH AS TREES, PARKING METERS, SIDEWALKS, CURBS, ASPHALT AND STREET SIGNS FROM DAMAGE DURING CONSTRUCTION. CONTRACTOR TO PAY THE COST TO REINSTATE OR REPLACE ANY DAMAGED INFRASTRUCTURE OR PROPERTY TO THE SATISFACTION OF THE CITY.
- 1.16 THE POSITION OF POLE LINES, CONDUITS, WATERMAIN, SEWERS, AND OTHER UNDERGROUND AND ABOVEGROUND UTILITIES AND STRUCTURES ARE NOT NECESSARILY SHOWN ON THE CONTRACT DRAWINGS, AND WHERE SHOWN, THE ACCURACY OF THE POSITION OF SUCH UTILITIES AND STRUCTURES IS NOT GUARANTEED. BEFORE STARTING WORK THE CONTRACTOR SHALL INFORM ITSELF OF THE EXACT LOCATION OF ALL SUCH UTILITIES AND STRUCTURES. SHALL PROTECT ALL UTILITIES AND STRUCTURES, AND SHALL ASSUME ALL LIABILITY FOR DAMAGE TO THEM.
- 1.17 CONTRACTOR TO SUPPLY SUITABLE FILL MATERIAL WHERE REQUIRED TO ROUGH GRADE THE SITE. ALL IMPORTED FILL MATERIAL TO BE CERTIFIED AS ACCEPTABLE BY THE GEOTECHNICAL ENGINEER.
- 1.18 CONTRACTOR TO HAUL EXCESS MATERIAL OFFSITE AS NECESSARY TO GRADE SITE TO MEET THE PROPOSED GRADES. ALL EXCESS MATERIAL TO BE HAULED OFFSITE AND DISPOSED OF AT AN APPROVED DUMP SITE. SHOULD THE CONTRACTOR DISCOVER ANY HAZARDOUS MATERIAL, CONTRACTOR IS TO NOTIFY ENGINEER IMMEDIATELY TO DETERMINE APPROPRIATE DISPOSAL METHOD/LOCATION.
- 1.19 FILL MATERIAL WITHIN THE PARKING LOT AND BUILDING PAD AREAS, AND SUPPORTING BUILDING FOUNDATIONS SHALL BE COMPACTED TO 98% STANDARD MODIFIED PROCTOR DENSITY AND TO THE SATISFACTION OF THE GEOTECHNICAL ENGINEER.
- 1.20 ALL COMPACTION METHODS TO BE PERFORMED TO THE SATISFACTION OF THE GEOTECHNICAL ENGINEER TO INCLUDE BUT NOT BE LIMITED TO THE THICKNESS OF LIFTS, AND COMPACTION EQUIPMENT USED.
- 1.21 ALL DISTURBED BOULEVARDS TO BE REINSTATED WITH 500 ON 100mm TOPSOIL.
- 1.22 UTILITY DUCTS TO BE INSTALLED PRIOR TO ROAD BASE CONSTRUCTION.
- 1.23 CLAY DIKES TO BE INSTALLED WHERE INDICATED ON THE DRAWINGS OR AS APPROVED AND DIRECTED BY THE GEOTECHNICAL ENGINEER ALL IN ACCORDANCE WITH CITY OF OTTAWA STANDARDS AND SPECIFICATIONS.
- 1.24 ALL UTILITY BOXES (i.e. PEDESTALS, TRANSFORMERS, ETC.) ARE TO BE INSTALLED IN ACCORDANCE WITH THE LATEST EDITION OF THE CITY OF OTTAWA'S "GUIDELINES FOR UTILITY PEDESTALS WITHIN THE ROAD RIGHT OF WAY".

2.0 PARKING LOT AND WORK IN PUBLIC RIGHTS OF WAY

- 2.1 CONTRACTOR TO REINSTATE ROAD CUTS PER CITY OF OTTAWA STANDARD R-10.
- 2.2 THE CONTRACTOR SHALL PREPARE A TRAFFIC MANAGEMENT PLAN FOR REVIEW AND APPROVAL BY THE CITY OF OTTAWA. CONTRACTOR TO MAINTAIN TRAFFIC FLOW DURING THE ENTIRE CONSTRUCTION PERIOD. MAINTENANCE OF ROAD CUTS SHALL BE THE RESPONSIBILITY OF THE CONTRACTOR. PROVISION OF FLAGMEN, DETOURS OR NECESSARY BARRICADES AND SIGNS TO THE FULL SATISFACTION OF THE ENGINEER AND ROAD AUTHORITY SHALL BE THE CONTRACTOR'S RESPONSIBILITY.
- 2.3 CONTRACTOR TO PREPARE SUBGRADE, INCLUDING PROOFROLLING, TO THE SATISFACTION OF THE GEOTECHNICAL ENGINEER PRIOR TO THE COMMENCEMENT OF PLACEMENT OF GRANULAR B MATERIAL.
- 2.4 FILL TO BE PLACED AND COMPACTED PER THE GEOTECHNICAL REPORT REQUIREMENTS.
- 2.5 CONTRACTOR TO SUPPLY, PLACE AND COMPACT GRANULAR B MATERIAL IN ACCORDANCE WITH THE RECOMMENDATIONS OF THE GEOTECHNICAL ENGINEER. CONTRACTOR TO PROVIDE ENGINEER WITH SAMPLES OF GRANULAR B MATERIAL FOR TESTING AND CERTIFICATION FROM THE GEOTECHNICAL ENGINEER THAT THE MATERIAL MEETS THE GRADATION REQUIREMENTS SPECIFIED IN THE GEOTECHNICAL REPORT.
- 2.6 GRANULAR A MATERIAL TO BE PLACED ONLY UPON APPROVAL BY THE GEOTECHNICAL ENGINEER OF GRANULAR A PLACEMENT.
- 2.7 CONTRACTOR TO SUPPLY, PLACE AND COMPACT GRANULAR A MATERIAL IN ACCORDANCE WITH THE RECOMMENDATIONS OF THE GEOTECHNICAL ENGINEER. CONTRACTOR TO PROVIDE ENGINEER WITH SAMPLES OF GRANULAR A MATERIAL FOR TESTING AND CERTIFICATION FROM THE GEOTECHNICAL ENGINEER THAT THE MATERIAL MEETS THE GRADATION REQUIREMENTS SPECIFIED IN THE GEOTECHNICAL REPORT.
- 2.8 ASPHALT MATERIAL TO BE PLACED ONLY UPON APPROVAL BY THE GEOTECHNICAL ENGINEER OF GRANULAR A PLACEMENT.
- 2.9 CONTRACTOR TO SUPPLY, PLACE AND COMPACT ASPHALT MATERIAL IN ACCORDANCE WITH THE RECOMMENDATIONS OF THE GEOTECHNICAL ENGINEER. CONTRACTOR TO PROVIDE ENGINEER WITH SAMPLES OF ASPHALT MATERIAL FOR TESTING AND CERTIFICATION FROM THE GEOTECHNICAL ENGINEER THAT THE MATERIAL MEETS THE REQUIREMENTS SPECIFIED IN THE GEOTECHNICAL REPORT.
- 2.10 CONTRACTOR IS RESPONSIBLE FOR ESTABLISHING LINE AND GRADE IN ACCORDANCE WITH THE PLANS, AND FOR PROVIDING THE ENGINEER WITH VERIFICATION PRIOR TO PLACEMENT.
- 2.11 DITCHES DISTURBED DURING CULVERT INSTALLATION AND GRADING OPERATIONS ARE TO BE REINSTATED TO THEIR ORIGINAL CONDITION AND FLOWLINE GRADES.
- 2.12 ALL EXCESS MATERIAL TO BE HAULED OFFSITE AND DISPOSED OF AT AN APPROVED DUMP SITE. SHOULD THE CONTRACTOR DISCOVER ANY HAZARDOUS MATERIAL, CONTRACTOR IS TO NOTIFY ENGINEER IMMEDIATELY TO DETERMINE APPROPRIATE DISPOSAL METHOD/LOCATION.
- 2.13 PAVEMENT STRUCTURE (MATERIAL TYPES AND THICKNESSES) FOR HEAVY DUTY AND LIGHT DUTY AREAS TO BE AS SPECIFIED IN THE GEOTECHNICAL REPORT AND SHOWN ON THE PLANS.

2.0 SANITARY

- 2.1 ALL SANITARY SEWER MAINS TO BE CSA CERTIFIED, BELL AND SPIGOT TYPE. ONLY FACTORY FITTINGS TO BE USED. SEWER TO BE INSTALLED AS PER OPSD 1005.01. SANITARY SEWER MATERIALS TO BE: 200mmØ AND SMALLER - PVC DR 35.
- 2.2 ALL SANITARY MAINTENANCE HOLES TO BE 1.2m DIAMETER AS PER CITY OF OTTAWA STANDARDS COMPLETE WITH BENCHING, RUNGS, FRAME AND COVER, DROP PIPES AND LANDINGS WHERE NEEDED.
- 2.3 SANITARY MANHOLE COVERS TO BE CITY OF OTTAWA STD. S25 (MOD. OPSD 401.020). SANITARY MANHOLE COVER TO BE CLOSED COVER TYPE, AS PER CITY STANDARD S24.
- 2.4 SANITARY SEWER LEAKAGE TEST AND CCTV INSPECTION SHALL BE COMPLETED AS PER CITY SPECIFICATIONS PRIOR TO INSTALLATION OF BASE COURSE ASPHALT.
- 2.5 ANY SANITARY SEWER WITH LESS THAN 2.0m COVER REQUIRES THERMAL INSULATION AS PER CITY OF OTTAWA STANDARD V22, OR AS APPROVED BY THE ENGINEER.
- 2.6 CONNECTION TO THE EXISTING SANITARY SEWER TO BE INCLUDED IN THE COST FOR SANITARY SEWER INSTALLATION. THIS INCLUDES REINSTATEMENT OF ROAD CUTS TO CITY STANDARDS.

3.0 STORM

- 3.1 ALL STORM SEWERS TO BE CSA CERTIFIED, BELL AND SPIGOT TYPE. ALL STORM SEWERS TO BE INSTALLED PER MANUFACTURER'S INSTRUCTIONS. ONLY FACTORY FITTINGS TO BE USED. STORM SEWER MATERIALS TO BE: 375mmØ AND SMALLER - PVC DR 35; 450mmØ AND LARGER - 100% REINFORCED CONCRETE.
- 3.2 ALL STORM MAINTENANCE HOLES TO BE SIZED IN ACCORDANCE WITH THE PLANS AND AS PER CITY OF OTTAWA STANDARDS COMPLETE WITH BENCHING, RUNGS, AND FRAME AND COVER.

PAVEMENT STRUCTURE

CAR ONLY PARKING AREAS:

50mm WEAR COURSE - SUPERPAVE 12.5
150mm BASE - OPSS GRANULAR "A" CRUSHED STONE
300mm SUBBASE - OPSS GRANULAR "B" TYPE II

HEAVY TRUCK PARKING AREAS AND ACCESS LANES:

40mm WEAR COURSE - SUPERPAVE 12.5
60mm BINDER COURSE - SUPERPAVE 19.0
150mm BASE COURSE - OPSS GRANULAR "A" CRUSHED STONE
450mm SUBBASE - OPSS GRANULAR "B" TYPE II

LEGEND:

- EXISTING SANITARY MANHOLE
- EXISTING STORM MANHOLE
- EXISTING STREET CATCHBASIN
- EXISTING CURB INLET CATCHBASIN
- EXISTING VALVE AND VALVE BOX
- EXISTING VALVE AND CHAMBER
- EXISTING HYDRANT
- EXISTING BARRIER CURB
- EXISTING DEPRESSED BARRIER CURB
- EXISTING CONCRETE SIDEWALK
- 250mmØ SUBDRAIN
- SIAMSESE CONNECTION (IF REQUIRED)
- METER
- REMOTE METER
- PRESSURE REDUCING VALVE
- WATERMAIN IDENTIFICATION
- PIPE CROSSING IDENTIFICATION
- INLET CONTROL DEVICE LOCATION
- PROTECTIVE BOLLARD
- HEAVY DUTY ASPHALT / FIRE ROUTE

- SANITARY MANHOLE
- STORM MANHOLE
- CATCHBASIN c/w TOP OF GRATE
- REAR YARD CATCHBASIN c/w GUTTER GRADE
- REAR YARD "END" CATCHBASIN c/w TOP OF GRATE 300Ø
- CATCHBASIN MANHOLE c/w TOP OF GRATE
- VALVE AND VALVE BOX
- VALVE AND CHAMBER
- HYDRANT c/w BOTTOM OF FLANGE ELEVATION
- DEPRESSED BARRIER CURB AS PER SC1.1
- BARRIER CURB AND GUTTER AS PER SC1.2
- MOUNTABLE CURB AS PER SC1.3
- PROPOSED CONCRETE SIDEWALK
- PROPOSED TWSI (SEE LANDSCAPE PLAN)
- SANITARY SEWER & FLOW DIRECTION
- STORM SEWER & FLOW DIRECTION
- WATERMAIN
- WATERMAIN REDUCER
- VERTICAL BEND LOCATION
- PROPERTY LINE
- PROPOSED MAIL BOX

- PROPOSED SWALE c/w FLOW DIRECTION
- PROPOSED DITCH c/w FLOW DIRECTION AND SLOPE
- SLOPE c/w FLOW DIRECTION
- MAJOR OVERLAND FLOW ROUTE
- PROPOSED SPOT GRADE
- PROPOSED SWALE GRADE
- PROPOSED SWALE HIGH POINT
- LOT CORNER GRADE c/w EXISTING GROUND
- TIE INTO EXISTING GRADE
- FULL STATIC PONDING GRADE
- TOP OF RETAINING WALL
- PROPOSED BOTTOM OF RETAINING WALL
- TERRACING 3:1 MAXIMUM UNLESS NOTED OTHERWISE
- PRELIMINARY ROOF DRAIN LOCATION
- TEST PITS (SEE GEOTECHNICAL REPORT)
- CLAY DYKES PER S8
- PROPOSED BUILDING FINISHED FLOOR ELEVATION
- PROPOSED UNDERSIDE OF FOOTING ELEVATION
- PROPOSED TRANSFORMER
- PROPOSED BIKE RACK

- PROPOSED SWALE c/w FLOW DIRECTION
- PROPOSED DITCH c/w FLOW DIRECTION AND SLOPE
- SLOPE c/w FLOW DIRECTION
- MAJOR OVERLAND FLOW ROUTE
- PROPOSED SPOT GRADE
- PROPOSED SWALE GRADE
- PROPOSED SWALE HIGH POINT
- LOT CORNER GRADE c/w EXISTING GROUND
- TIE INTO EXISTING GRADE
- FULL STATIC PONDING GRADE
- TOP OF RETAINING WALL
- PROPOSED BOTTOM OF RETAINING WALL
- TERRACING 3:1 MAXIMUM UNLESS NOTED OTHERWISE
- PRELIMINARY ROOF DRAIN LOCATION
- TEST PITS (SEE GEOTECHNICAL REPORT)
- CLAY DYKES PER S8
- PROPOSED BUILDING FINISHED FLOOR ELEVATION
- PROPOSED UNDERSIDE OF FOOTING ELEVATION
- PROPOSED TRANSFORMER
- PROPOSED BIKE RACK

WATERMAIN SCHEDULE				
STATION	DESCRIPTION	FINISHED GRADE(m)	TOP OF WATERMAIN	AS-BUILT WATERMAIN
A 0+000	CONNECT TO EX. 150Ø W/M	91.75	89.35	
0+020		92.08	89.68	
0+028.50	50Ø V&VB	92.25	89.85	
0+030.80	50Ø BUILDING SERVICE	91.76	89.36	
	150Ø W/M ADD 150Ø V&VB			
				REVISED 2019 05 06

ROOF DRAINS: ROOF DRAINS WATTS RD-100 OR APPROVED EQUAL RESTRICTED TO 0.63 l/s EACH (2 Ø 0.63 = 1.26 l/s TOTAL) AT 150mm HEAD, TOTAL STORAGE VOLUME REQUIRED FOR 100 YR 8.37m³, 5 YR 3.44m³, 2 YR 2.13m³ SEE MECHANICAL DRAWINGS FOR DETAILS.

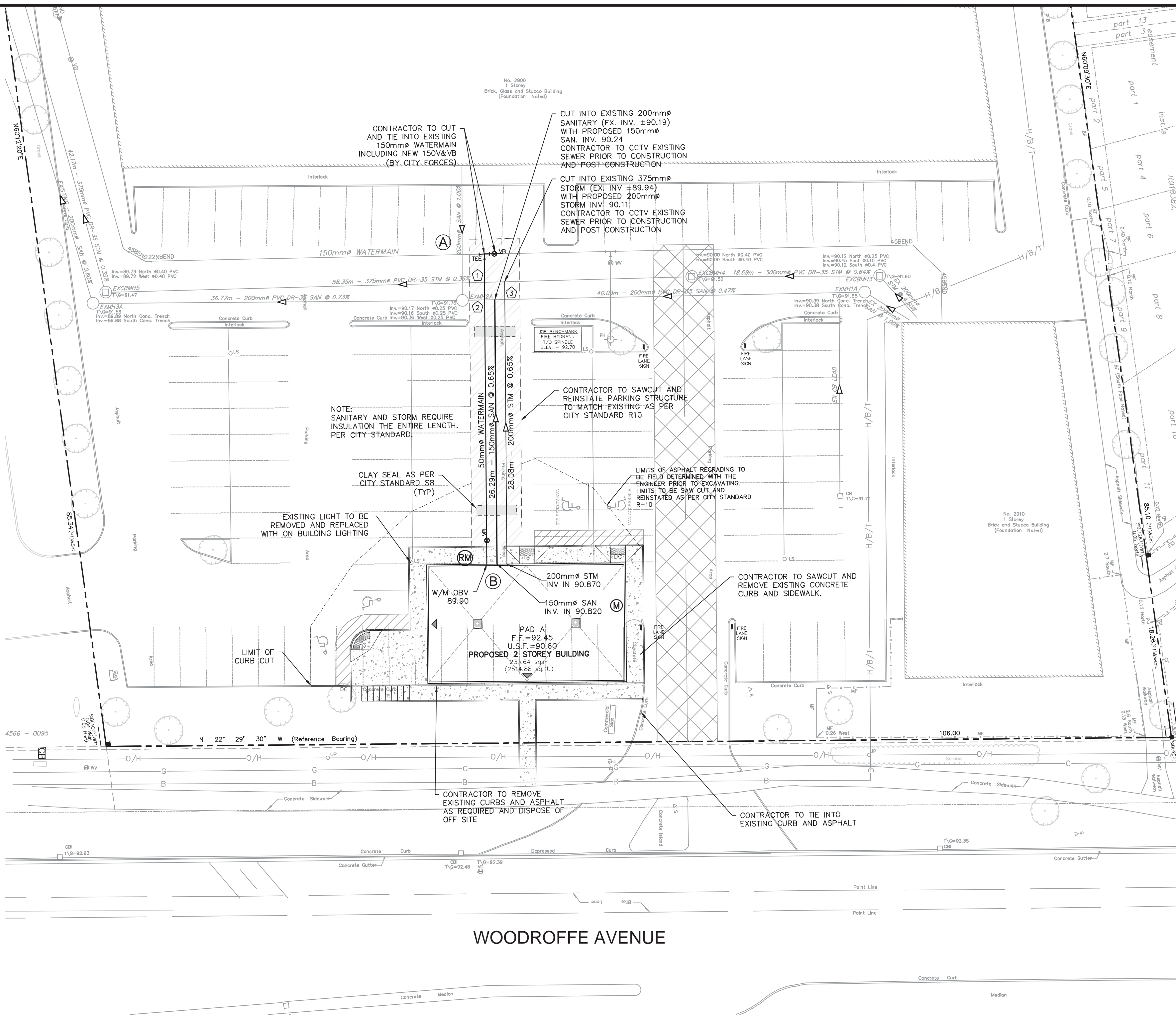
Crossing Schedule			
1	50 Ø W/M	0.60 m CLEARANCE UNDER	375 Ø STM
2	50 Ø W/M	0.85 m CLEARANCE UNDER	200 Ø SAN
3	200 Ø STM	0.30 m CLEARANCE OVER	200 Ø SAN

REVISED 2019-05-02

LILY XU, MCIP, RPP
(A) MANAGER, DEVELOPMENT REVIEW - SOUTH
PLANNING, INFRASTRUCTURE & ECONOMIC
DEVELOPMENT DEPARTMENT, CITY OF OTTAWA

APPROVED

By Lily Xu at 2:41 pm, Sep 03, 2019



KEY PLAN (NTS)

NOTES:

1. SITE BENCHMARK TO BE OBTAINED FROM LEGAL SURVEYOR ANNIS, O'SULLIVAN, VOLLEBEKK LTD.
2. SEE LANDSCAPE PLAN L1 FOR DETAILS ON TWIS AND CONCRETE PAVING AROUND BUILDING.

No.	REVISIONS	By	Date
14			
13			
12			
11			
10			
9			
8			
7			
6			
5	REVISED AS PER CITY COMMENTS	DGY	19:08:16
4	REVISED AS PER NEW SITE PLANS AND CITY COMMENTS	DGY	19:07:22
3	ISSUED FOR SPA	DGY	19:05:08
2	REVISED AS PER NEW ARCHITECTS PLANS	DGY	19:05:06
1	ISSUED FOR SPA	DGY	19:05:03

OWNER
Woodroffe Square Inc.
1280 Baseline Road, Suite 201, Ottawa ON K2C 0A9
T 613 274 7700

GEOTECHNICAL
Gemtec Consulting Engineers and Scientists
32 Steacie Drive, Ottawa ON K2A 2A9
T 613 836 1422 gemtec@gemtec.ca

PLANNER
Lloyd Phillips & Associates Ltd.
1527 Woodward Drive, Suite 109, Ottawa ON K2C 0P9
T 613 236 5373 lloyd@lloydphillips.com

SURVEYOR
Annis O'Sullivan Vollebekk Ltd.
14, Concourse Gate, Suite 500, Nepean ON K2E 7S6
T 613 727 0850 nepean@avoltb.com

ARCHITECT
P-Squared Concepts Inc.
739, Ridgewood Avenue, Unit 201, Ottawa, ON K1V 6M6
T 613 696 0192 P2@p2concepts.ca

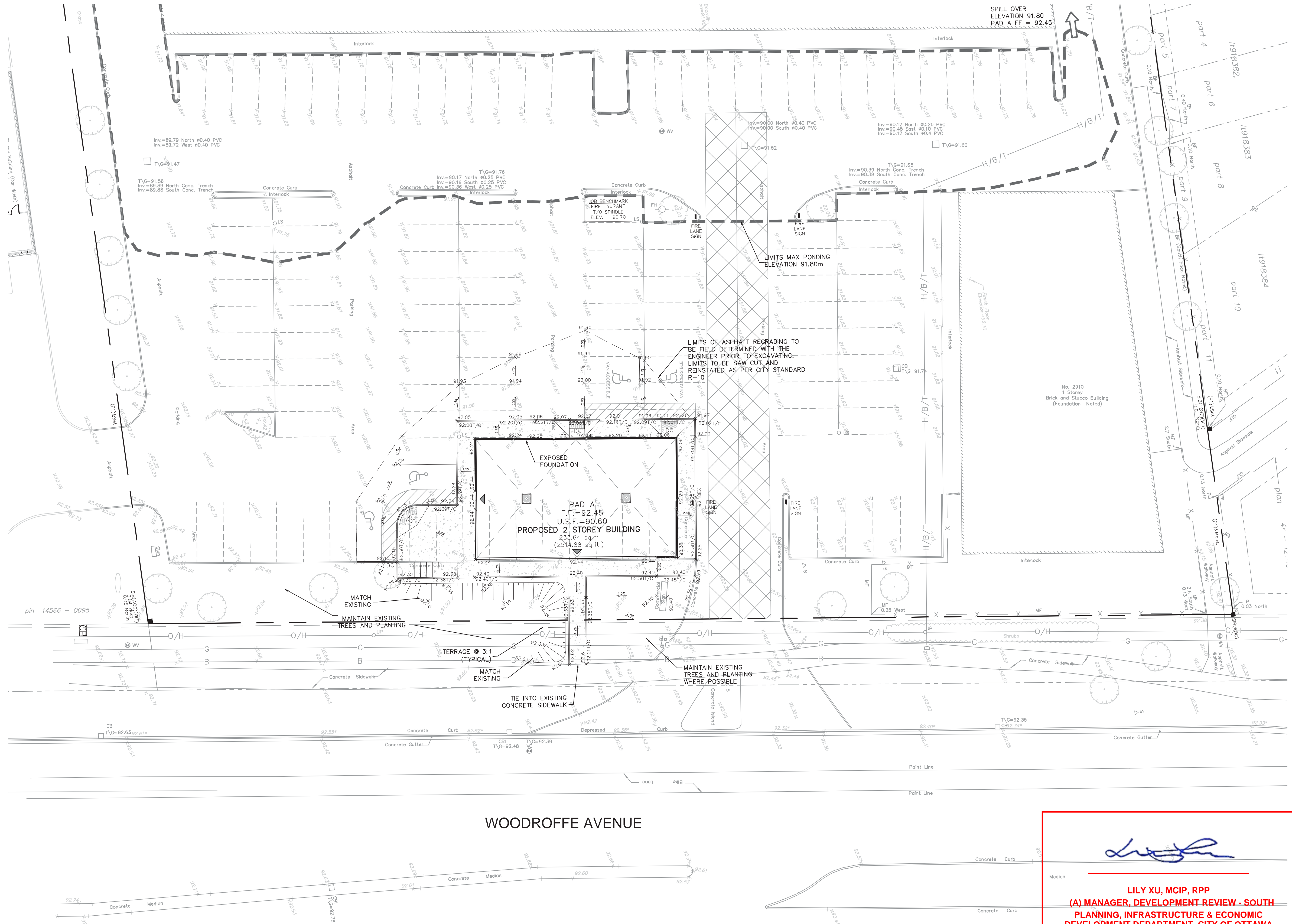
Project Title
2900 WOODROFFE AVENUE

Drawing Title
SITE SERVICING PLAN

Scale
0 5 10 Meters
1:250

Design	SEL	Date	MAY 2019
Drawn	DPS	Checked	DGY
Project No.	119777	Drawing No.	001

J:\119777_2900Woodroffe\5.0 Drawings\5.0.dwg Layout Name: 200 SITE GRADING PLAN Plot Size: AIA STANDARD-HLLC.BT Plot Scale: 1:25.4 Plotted At: 8/16/2019 11:13 PM Last Saved By: DSURIA Last Saved At: Aug. 16, 2019



LILY XU, MCIP, RPP
(A) MANAGER, DEVELOPMENT REVIEW - SOUTH
PLANNING, INFRASTRUCTURE & ECONOMIC
DEVELOPMENT DEPARTMENT, CITY OF OTTAWA

APPROVED
By Lily Xu at 2:42 pm, Sep 03, 2019



KEY PLAN
(NTS)

- NOTES:**
1. SEE DRAWING 001 FOR ADDITIONAL DETAILS, AND NOTES.
 2. SITE BENCHMARK TO BE OBTAINED FROM LEGAL SURVEYOR ANNIS, O'SULLIVAN, VOLLEBEKK LTD.
 3. SEE LANDSCAPE PLAN L1 FOR DETAILS ON TWSIS AND CONCRETE PAVING AROUND BUILDING.

14			
13			
12			
11			
10			
9			
8			
7			
6			
5	REVISED AS PER CITY COMMENTS	DGY	19.08.16
4	REVISED AS PER NEW SITE PLAN AND CITY COMMENTS	DGY	19.07.22
3	ISSUED FOR SPA	DGY	19.05.08
2	REVISED AS PER NEW ARCHITECTS PLANS	DGY	19.05.06
1	ISSUED FOR SPA	DGY	19.05.03
No.	REVISIONS	By	Date

OWNER
Woodroffe Square Inc.
1280 Baseline Road, Suite 201, Ottawa ON K2C 0A9
T 613 274 7700

GEOTECHNICAL
Gemtec Consulting Engineers and Scientists
32 Steacie Drive, Ottawa ON K2A 2A9
T 613 836 1422 gemtec@gemtec.ca

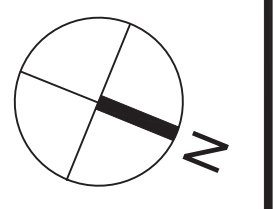
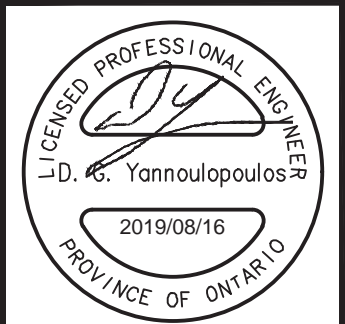
PLANNER
Lloyd Phillips & Associates Ltd.
1527 Woodward Drive, Suite 109, Ottawa ON K2C 0P9
T 613 236 5373 lloyd@lloydphillips.com

SURVEYOR
Annis O'Sullivan Vollebakk Ltd.
14, Concourse Gate, Suite 500, Nepean ON K2E 7S6
T 613 727 0850 nepean@aovltd.com

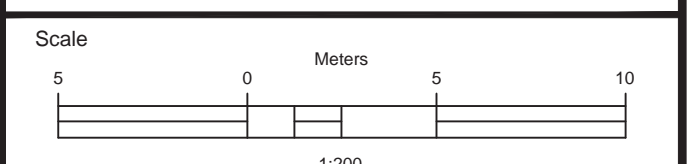
ARCHITECT
P-Squared Concepts Inc.
739, Ridgewood Avenue, Unit 201, Ottawa, ON K1V 6M6
T 613 695 0192 P2@p2concepts.ca

IBI GROUP
400 - 333 Preston Street
Ottawa ON K1S 5N4 Canada
tel 613 225 1311 fax 613 225 9868
ibigroup.com

Project Title
2900 WOODROFFE AVENUE



Drawing Title
SITE GRADING PLAN



Design	SEL	Date	MAY 2019
Drawn	DPS	Checked	DGY
Project No.	119777	Drawing No.	200

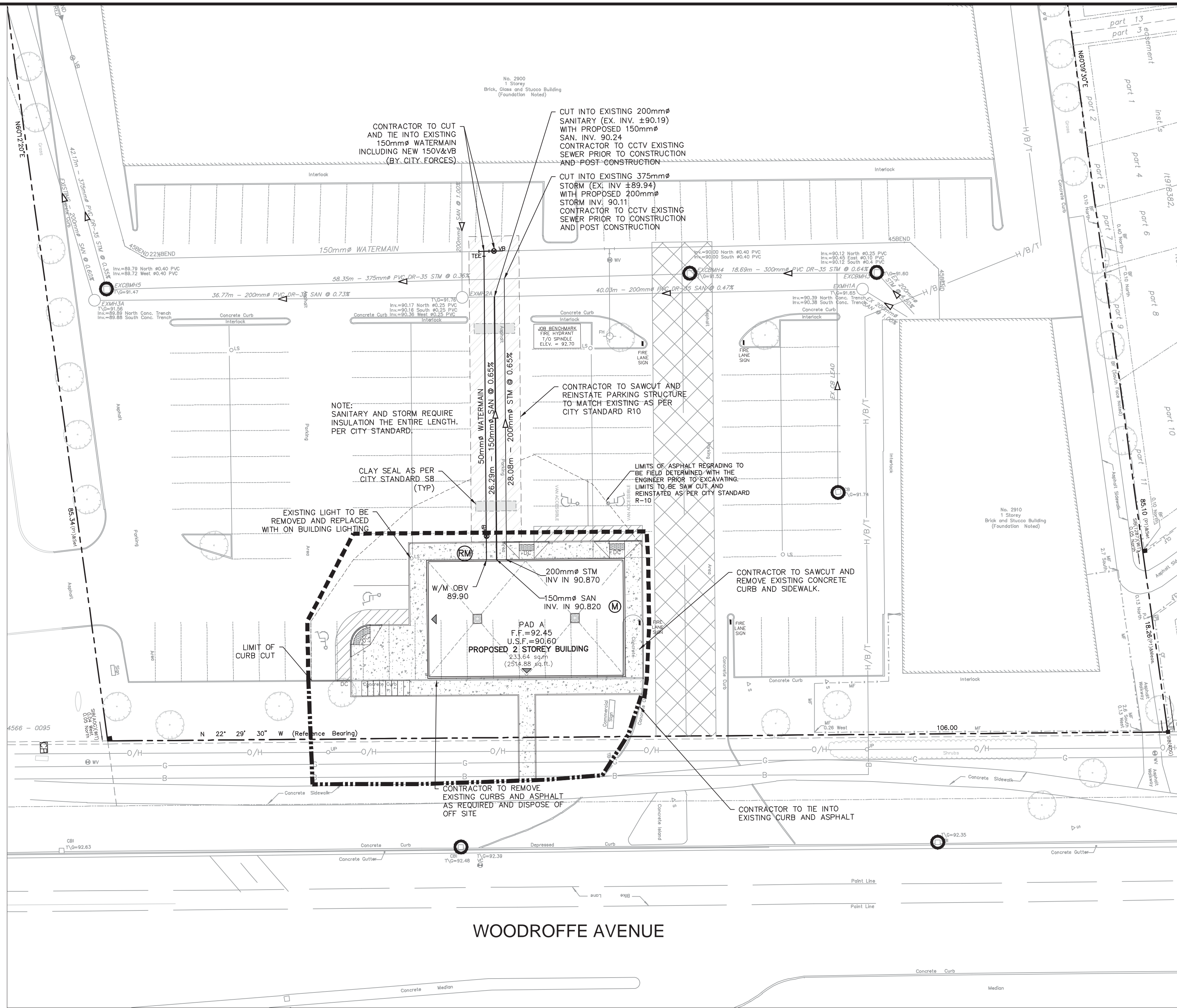


Drawing No.

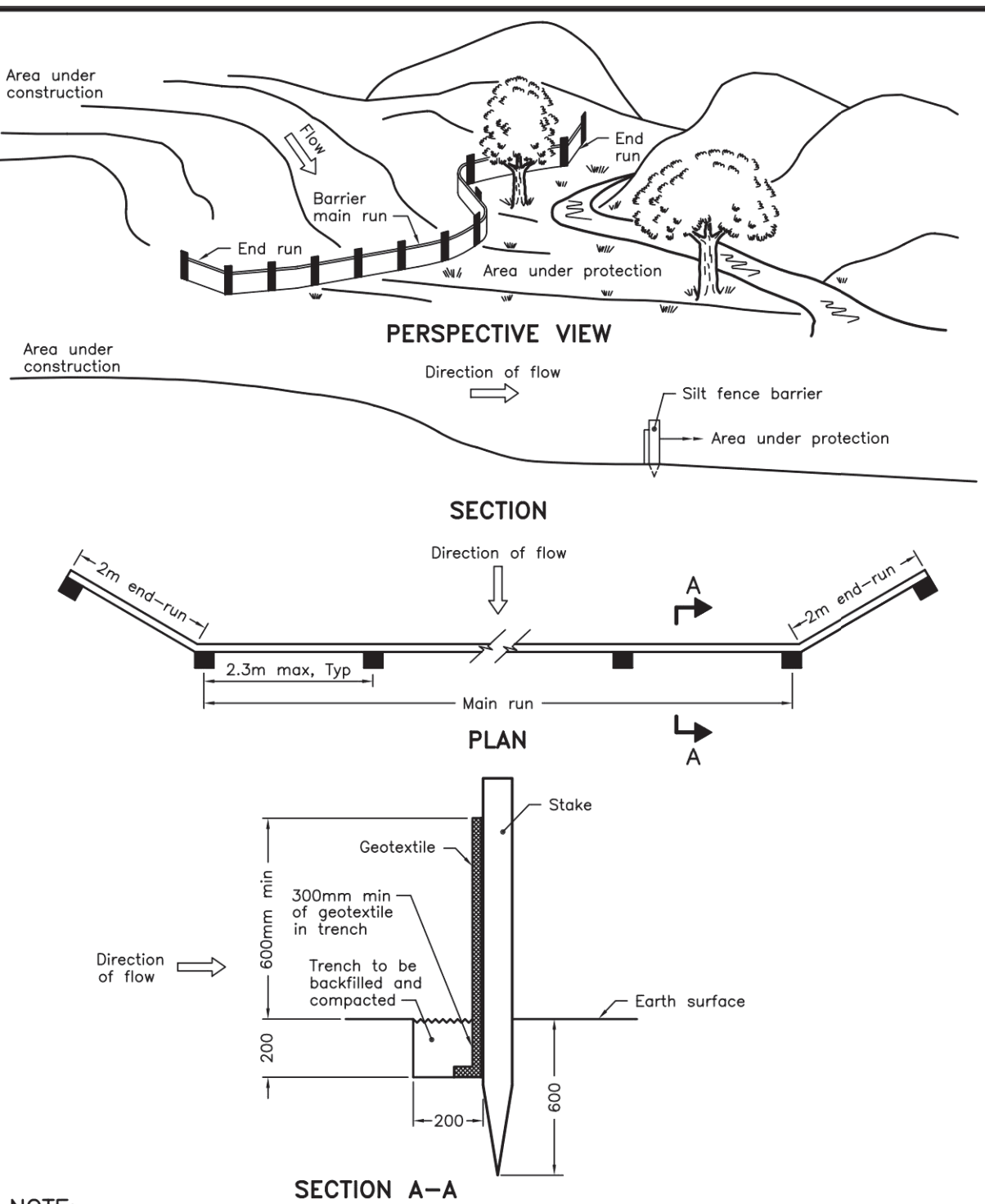
NOTES:

1. SILT FENCE TO BE ERECTED PRIOR TO EARTH WORKS BEING COMMENCED. SILT FENCE TO BE MAINTAINED UNTIL VEGETATION IS ESTABLISHED AND OR PAVEMENT/WALKWAYS COMPLETED.
2. SILT SACK CATCHBASIN INSERTS TO BE PLACED UNDER COVER OF ALL CATCHBASINS. SILT SACK IN STREET C/S AND MANHOLES TO REMAIN UNTIL BASE COURSE ASPHALT IS LAID. ALL CATCHBASINS TO BE REGULARLY INSPECTED AND CLEANED, AS NECESSARY, UNTIL SOD AND CURBS ARE CONSTRUCTED.
3. THE SEDIMENT AND EROSION CONTROL MEASUREMENTS MAY BE MODIFIED IN THE FIELD AT THE DISCRETION OF THE CITY OF OTTAWA SITE INSPECTOR OR CONSERVATION AUTHORITY.

THE CONTRACTOR SHALL IMPLEMENT BEST MANAGEMENT PRACTICES, TO PROVIDE FOR PROTECTION OF THE AREA DRAINAGE SYSTEM AND THE RECEIVING WATER COURSE, DURING CONSTRUCTION ACTIVITIES. THIS INCLUDES LIMITING THE AMOUNT OF EXPOSED SOIL, USING FILTER CLOTH UNDER THE GRATES OF MANHOLES AND INSTALLING SILT FENCES, SILT SACKS AND OTHER EFFECTIVE SEDIMENT TRAPS. THE CONTRACTOR ACKNOWLEDGES THAT FAILURE TO IMPLEMENT APPROPRIATE EROSION AND SEDIMENT CONTROL MEASURES AND/OR MAINTAIN THEM THAT THEY MAY BE SUBJECT TO PENALTIES IMPOSED BY APPLICABLE REGULATORY AGENCIES.



WOODROFFE AVENUE



NOTE:
A All dimensions are in millimetres unless otherwise shown.

ONTARIO PROVINCIAL STANDARD DRAWING	Nov 2006	Rev 1
LIGHT-DUTY SILT FENCE BARRIER		
OPSD 219.110		

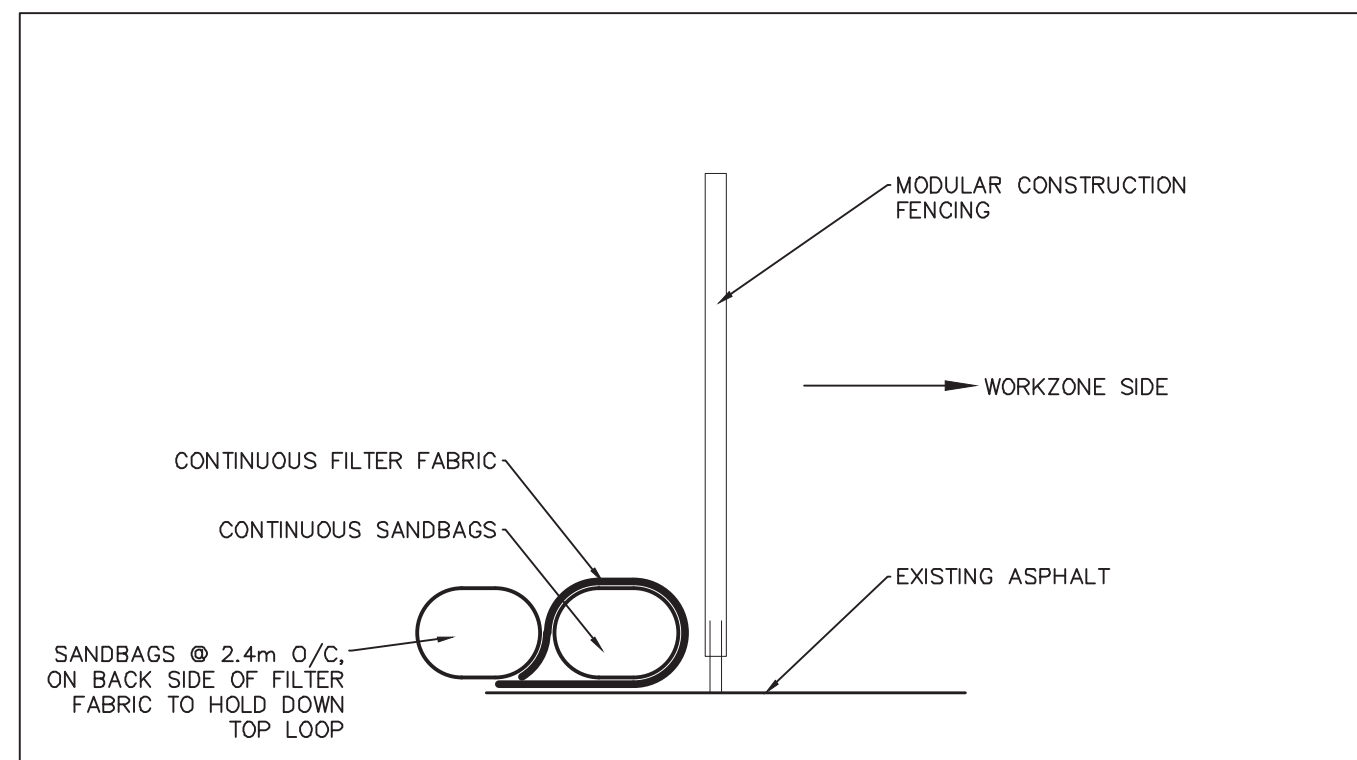
LEGEND :

- LIGHT DUTY SILT FENCE AS PER OPSD-219.110
- CUSTOM SILT FENCE (AS PER DETAIL)
- SILT SACK CATCHBASIN INSERT PLACED UNDER CB OR MH COVER

LILY XU, MCIP, RPP
(A) MANAGER, DEVELOPMENT REVIEW - SOUTH
PLANNING, INFRASTRUCTURE & ECONOMIC
DEVELOPMENT DEPARTMENT, CITY OF OTTAWA

APPROVED

By Lily Xu at 2:43 pm, Sep 03, 2019



CUSTOM SILT FENCE DETAIL
FOR SITE PERIMETER
LOCATION AS REQUIRED

KEY PLAN
(NTS)

NOTES:

1. SITE BENCHMARK TO BE OBTAINED FROM LEGAL SURVEYOR ANNIS, O'SULLIVAN, VOLLEBEKK LTD.

14			
13			
12			
11			
10			
9			
8			
7			
6			
5	REVISED AS PER CITY COMMENTS	DGY	19.08.16
4	REVISED AS PER NEW SITE PLAN AND CITY COMMENTS	DGY	19.07.22
3	ISSUED FOR SPA	DGY	19.05.08
2	REVISED AS PER NEW ARCHITECTS PLANS	DGY	19.05.06
1	ISSUED FOR SPA	DGY	19.05.03
No.	REVISIONS	By	Date

OWNER

Woodroffe Square Inc.
1280 Baseline Road, Suite 201, Ottawa ON K2C 0A9
T 613 274 7700

GEOTECHNICAL

Gemtec Consulting Engineers and Scientists
32 Steacie Drive, Ottawa ON K2K 2A9
T 613 836 1422 gemtec@gemtec.ca

PLANNER

Lloyd Phillips & Associates Ltd.
1527 Woodward Drive, Suite 109, Ottawa ON K2C 0P9
T 613 236 5373 lloyd@lloydphillips.com

SURVEYOR

Annis O'Sullivan Vollebakk Ltd.
14, Concourse Gate, Suite 500, Nepean ON K2E 7S6
T 613 727 0850 nepean@aovltd.com

ARCHITECT

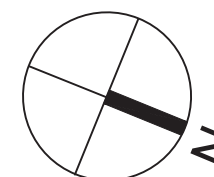
P-Squared Concepts Inc.
739, Ridgewood Avenue, Unit 201, Ottawa, ON K1V 6M6
T 613 695 0192 P2@p2concepts.ca



IBI GROUP
400 - 333 Preston Street
Ottawa ON K1S 5N4 Canada
tel 613 225 1311 fax 613 225 9868
ibigroup.com

Project Title

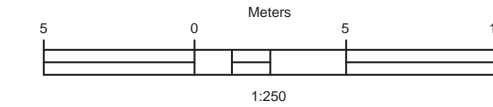
2900 WOODROFFE AVENUE



Drawing Title

**EROSION AND
SEDIMENTATION CONTROL
PLAN**

Scale



Design

Date

SEL MAY 2019

Drawn

Checked

DPS DGY

Project No.

Drawing No.

119777 900