

**METRIC**  
DISTANCES AND ELEVATIONS SHOWN ON THIS PLAN ARE IN METRES  
AND CAN BE CONVERTED TO FEET BY DIVIDING BY 0.3048

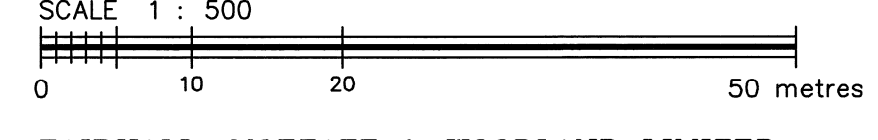
COORDINATES WERE DERIVED FROM REAL TIME NETWORK  
OBSERVATIONS (SMARTNET) MTM ZONE 9, NAD83 ORIGINAL.

COORDINATES HAVE BEEN DETERMINED TO AN URBAN ACCURACY  
IN ACCORDANCE WITH SECTION 14(2) OF O.REG 216/10.

POINT ID	NORTHING	EASTING
1	5027698.17	373284.10
2	5027460.86	372878.28

COORDINATES CANNOT IN THEMSELVES BE USED TO RE-ESTABLISH  
CORNERS OR BOUNDARIES SHOWN ON THIS PLAN.

TOPOGRAPHIC SURVEY OF  
PART OF BLOCK 'L', PART OF BLOCK L3,  
AND ONE FOOT RESERVE  
REGISTERED PLAN 728  
AND PART OF LOT 19, JG, (GLOUCESTER)  
CITY OF OTTAWA



FAIRHALL, MOFFATT & WOODLAND LIMITED  
ONTARIO LAND SURVEYORS

- ELEVATION NOTES**
- ELEVATIONS SHOWN HEREON ARE REFERRED TO GEODETTIC DATUM (CGVD28).
  - ELEVATIONS FOR MANHOLE COVERS AND CATCH BASINS HAVE TO BE INDEPENDENTLY CONFIRMED BEFORE THEY CAN BE ACCEPTED FOR FINAL DESIGN OR CONSTRUCTION PURPOSES.
  - IT IS THE RESPONSIBILITY OF THE USER OF THIS INFORMATION TO VERIFY THAT THE JOB BENCHMARKS HAVE NOT BEEN ALTERED OR DISTURBED AND THAT THEIR RELATIVE ELEVATION AND DESCRIPTION AGREE WITH THE INFORMATION SHOWN ON THIS DRAWING.

- UTILITY NOTES**
- THIS DRAWING CANNOT BE ACCEPTED AS ACKNOWLEDGING ALL UNDERGROUND UTILITIES AND IT WILL BE THE RESPONSIBILITY OF THE USER TO CONTACT THE RESPECTIVE UTILITY AUTHORITIES FOR CONFIRMATION OR LOCATION.
  - BEFORE ANY WORK INVOLVING PROBING, EXCAVATING, ETC., A FIELD LOCATION OF UNDERGROUND PLANT BY THE PERTINENT UTILITY AUTHORITY IS MANDATORY.
  - ON SITE UNDERGROUND UTILITIES INFORMATION SHOWN ARE AS LOCATED BY MULTIVIEW LOCATES INC. UTILITIES HAVE BEEN LOCATED FOR A PORTION OF SITE ONLY.

- NOTES**
- BEARINGS ARE GRID, DERIVED FROM OBSERVED REFERENCE POINTS ① AND ② BY REAL TIME NETWORK OBSERVATIONS AND ARE REFERRED TO THE CENTRAL MERIDIAN, 76°30'W LONGITUDE MTM ZONE 9, (NAD83 ORIGINAL).
  - DISTANCES ARE GROUND AND CAN BE CONVERTED TO GRID BY MULTIPLYING BY THE COMBINED SCALE FACTOR 0.999950.
  - ELEVATIONS ARE REFERRED TO GEODETTIC DATUM (CGVD28).

- LEGEND**
- - SURVEY MONUMENT SET
  - - SURVEY MONUMENT FOUND
  - SIB - STANDARD IRON BAR
  - RIB - ROUND IRON BAR
  - (P) - REGISTERED PLAN 728
  - (P1) - PLAN SR-6261
  - (P2) - PLAN SR-11369
  - (M) - MEASURED
  - (S) - SET
  - (D) - INST. N685696
  - PIN - PROPERTY IDENTIFIER NUMBER
  - (SU) - SOURCE UNKNOWN
  - (857) - FAIRHALL, MOFFATT & WOODLAND LTD., O.L.S.
  - CB - CATCH BASIN
  - MH - MANHOLE
  - LS - LAMP STANDARD
  - CT - CONIFEROUS TREE
  - DT - DECIDUOUS TREE
  - GV - GAS VALVE
  - WV - WATER VALVE
  - ▲ - SIGN
  - UP - UTILITY POLE
  - W - WATERMAIN
  - OH - OVERHEAD UTILITY WRES
  - UH - UNDERGROUND HYDRO
  - UB - UNDERGROUND BELL
  - G - GAS MAIN
  - ST - STORM SEWER
  - S - SANITARY SEWER
  - C - CURB
  - E - UNDERGROUND ELECTRICAL

**SURVEYOR'S CERTIFICATE**

I CERTIFY THAT:

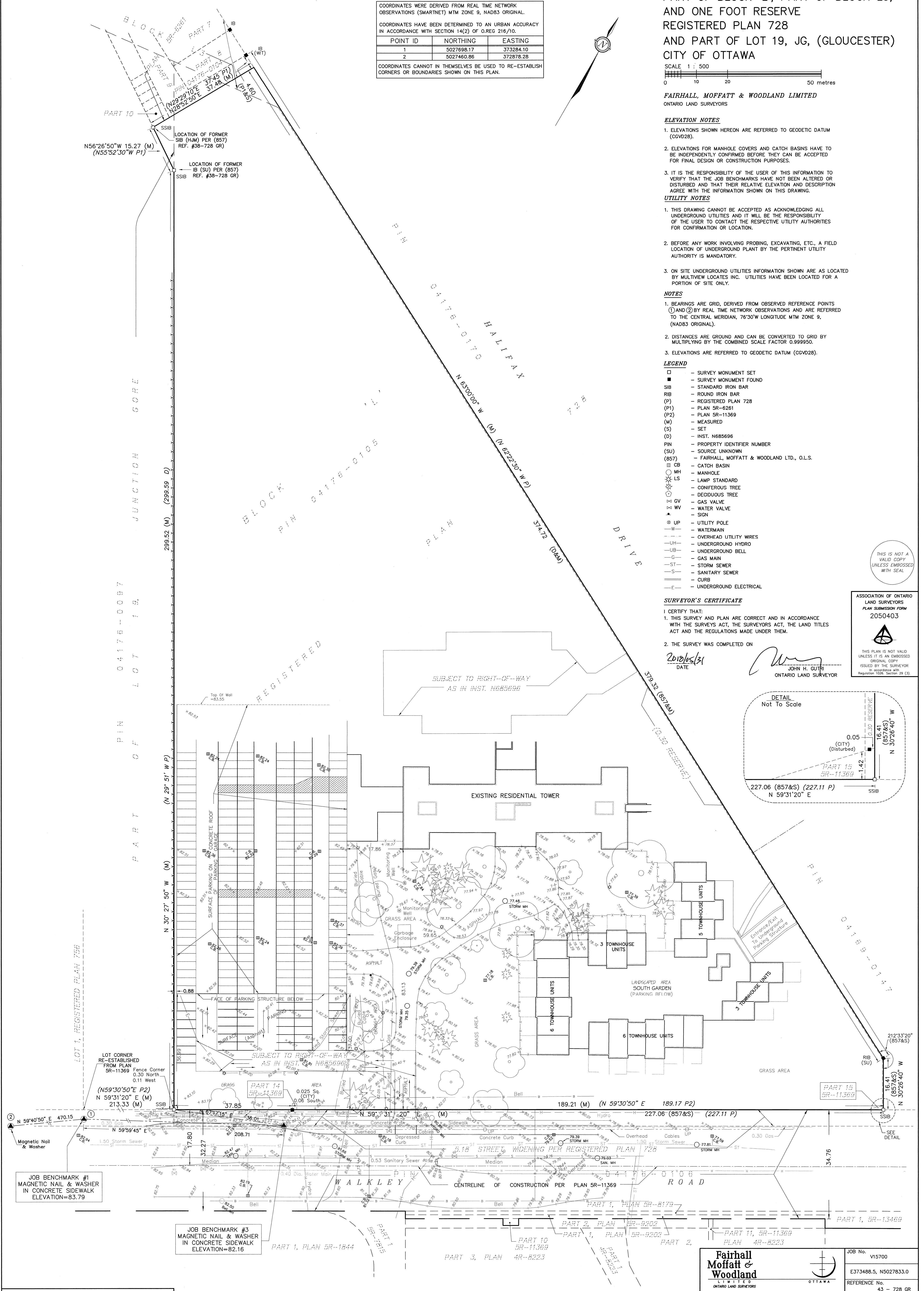
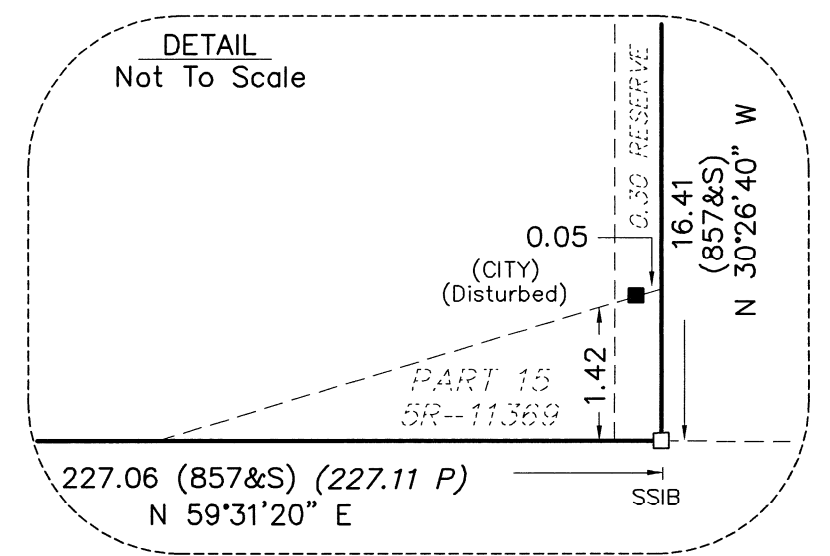
- THIS SURVEY AND PLAN ARE CORRECT AND IN ACCORDANCE WITH THE SURVEYS ACT, THE SURVEYORS ACT, THE LAND TITLES ACT AND THE REGULATIONS MADE UNDER THEM.
- THE SURVEY WAS COMPLETED ON

2018/05/31  
DATE

JOHN H. GUTRI  
ONTARIO LAND SURVEYOR

ASSOCIATION OF ONTARIO  
LAND SURVEYORS  
PLAN SUBMISSION FORM  
2050403

THIS PLAN IS NOT VALID UNLESS IT IS AN EMBOSSED ORIGINAL COPY ISSUED BY THE SURVEYOR in accordance with Regulation 1028, Section 29 (3).



© COPYRIGHT 2018. REPRODUCTION, ALTERATION OR DISTRIBUTION OF THIS PLAN WITHOUT THE WRITTEN CONSENT OF FAIRHALL, MOFFATT & WOODLAND LIMITED IS PROHIBITED.

**Fairhall Moffatt & Woodland**  
L I M I T E D  
ONTARIO LAND SURVEYORS

Surveying and Land Information Services  
100-600 TERRY FOX DRIVE, KANATA, ONTARIO K2L 4B6  
TEL: (613) 591-2500 FAX: (613) 591-1495  
www.fmw.on.ca

OTTAWA

JOB No. v15700  
E373488.5, N5027833.0  
REFERENCE No. 43 - 728 GR  
updated V157.2017.dwg (d)  
May 24, 2018