

NO.	REVISION	DATE
1	ISSUED FOR 1ST SUBMISSION	18-12-21
2		

**DERRICK MOODIE**  
**MANAGER**  
 PLANNING, INFRASTRUCTURE & ECONOMIC  
 DEVELOPMENT DEPARTMENT, CITY OF OTTAWA

**APPROVED**  
 By Samantha Gatchene at 2:06 pm, Aug 09, 2019



www.vandenberg-wildeboer.ca Telephone: 613.287.6164 Facsimile: 613.271.8609 mail@vandenberg-wildeboer.ca  
 • THE OLD STONE LODGE • 160 FLAMBOROUGH WAY • OTTAWA (K1M 1Y1) • ONTARIO • K2K 3E9 •

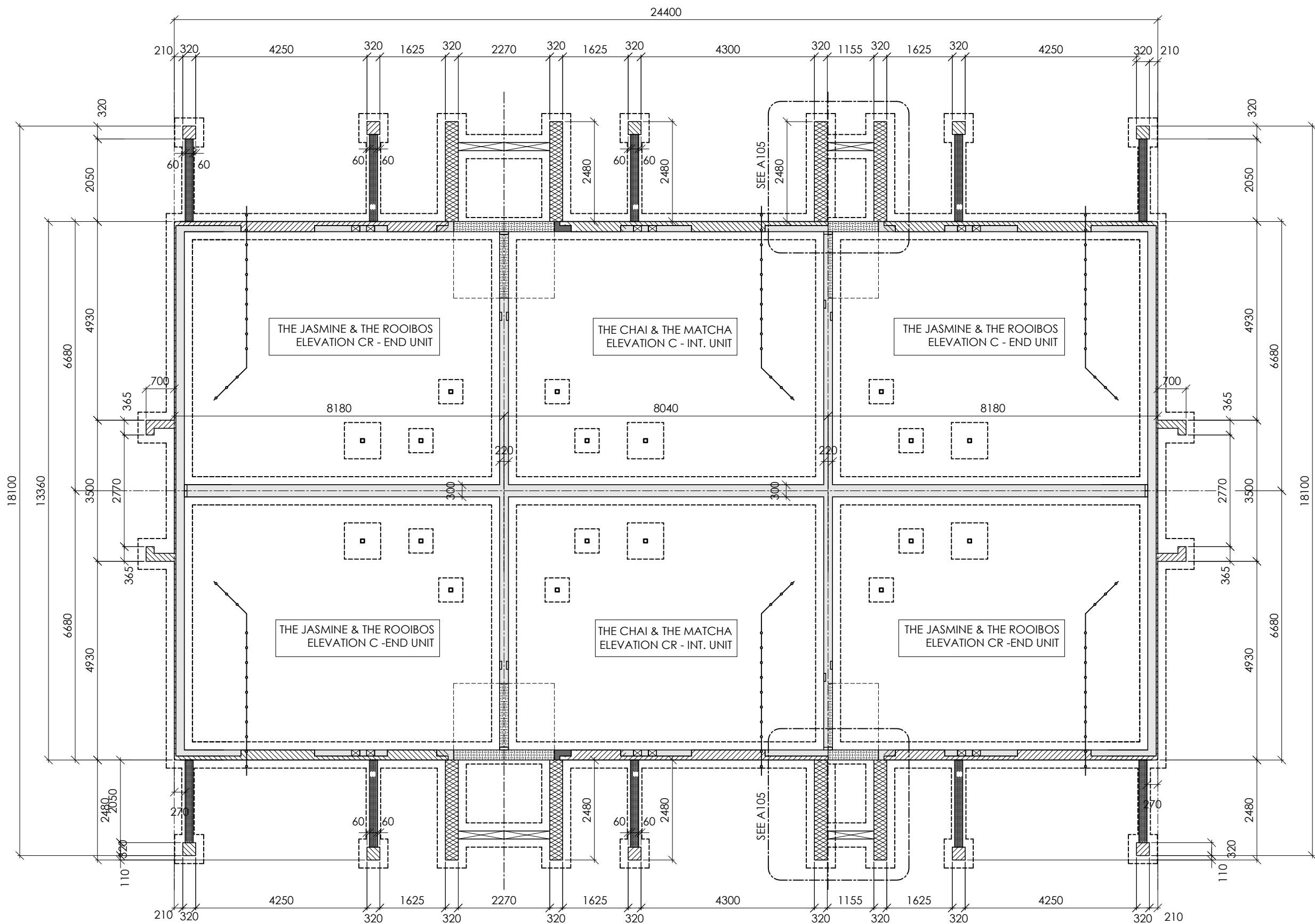
PROJECT TITLE  
**MINTO INFUSION CONDO**  
 OTTAWA, ONTARIO

DRAWING TITLE  
**BF-3 FOUNDATION**  
 (MORGAN'S CREEK)

2018 FUSION TERRACE  
 THE MATCHA THE JASMINE  
 THE ROOIBOS THE CHAI

DESIGNED BY: ####  
 DRAWN BY: NG  
 START DATE:  
 SCALE: 1:100  
 PROJECT NO. 1806

DRAWING No.  
**BF-3**



**1** **BF-3 FOUNDATION**  
**BF-3**

SCALE: 1:100

\*\*REFER TO INDIVIDUAL FOUNDATION PLANS FOR MORE INFORMATION\*\*  
 \*\*REFER TO GRADING AND SERVICING PLAN FOR USE AND OTHER INFO\*\*

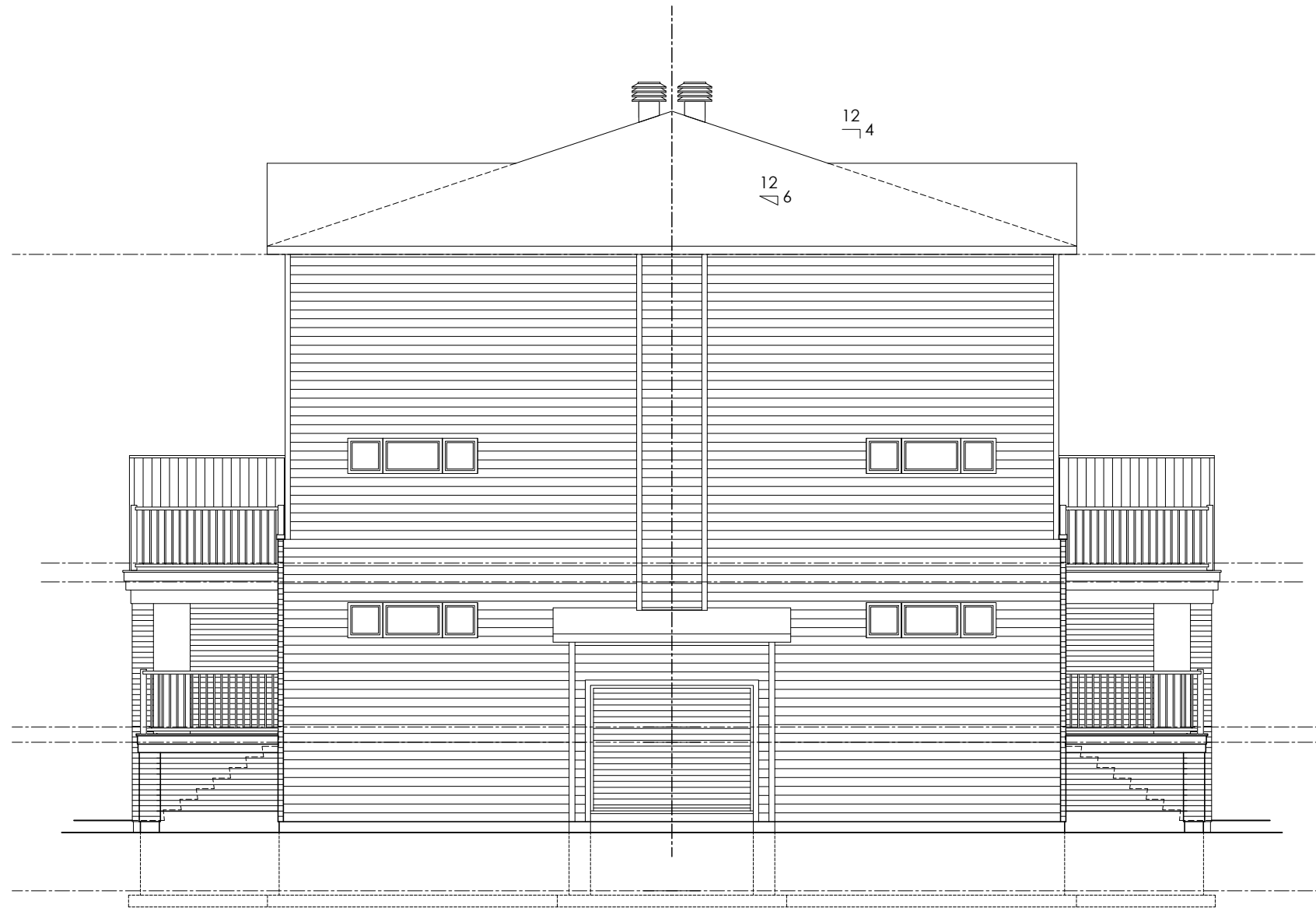
PLOT DATE: December 21, 2018

Dxx-XX-XX-XXXX

#XXXXX



NO.	REVISION	DATE
1	ISSUED FOR 1ST SUBMISSION	18-12-21
2		



THE JASMINE & THE ROOIBOS  
SIDE ELEVATION CR -END UNIT

THE JASMINE & THE ROOIBOS  
SIDE ELEVATION C -END UNIT



**DERRICK MOODIE**  
MANAGER  
PLANNING, INFRASTRUCTURE & ECONOMIC  
DEVELOPMENT DEPARTMENT, CITY OF OTTAWA

**APPROVED**  
By Samantha Gatchene at 2:06 pm, Aug 09, 2019



www.vandenberg-wildeboer.com Telephone: 613.287.6164 Fax: 613.271.8689 mail@vandenberg-wildeboer.com  
"THE OLD STONE LODGE" • 160 FLAMBOROUGH WAY • OTTAWA (KANATA) • ONTARIO • K2K 3E9

PROJECT TITLE  
**MINTO INFUSION CONDO**  
OTTAWA, ONTARIO

DRAWING TITLE  
**BE-3 ELEVATION**  
(MORGAN'S CREEK)

2018 FUSION TERRACE  
THE MATCHA THE JASMINE  
THE ROOIBOS THE CHAI

DESIGNED BY: ####  
DRAWN BY: NG  
START DATE:  
SCALE: 1:100  
PROJECT NO. 1806

DRAWING No.  
**BE-3**

**1** BE-3 ELEVATION C  
SCALE: 1:100  
BE-3