

MALETTE  
DESIGN

BCIN No. 112887  
TEL: 613-762-6069  
malette@malette.ca

ALL WORK TO BE DONE IN ACCORDANCE WITH THE LATEST EDITION OF THE ONTARIO BUILDING CODE.

IT IS THE RESPONSIBILITY OF THE INDIVIDUAL CONTRACTOR TO CHECK AND VERIFY ALL DIMENSIONS ON SITE AND TO REPORT ANY DISCREPANCIES TO THE DESIGNER AND/OR CONSULTANTS.

CONTRACTORS MUST COMPLY WITH ALL PERTINENT CODES AND BY-LAWS.

CONFIRM LOCATION OF ALL UNDERGROUND SERVICES PRIOR TO EXCAVATION.

DO NOT SCALE DRAWINGS. COPYRIGHT RESERVED.

CONSULTANTS:

09	REVISED TO NEW SITE PLAN, NEW PROJECT ADDRESS AND FOR PERMIT	MAY 28/19
08	FOR PERMIT	NOV 16/18
07	REVISED TO 5 RETAIL UNITS WITH CORRECTIONS TO ALL DWGS & SUBMITTED FOR FINAL REVIEW.	OCT 22/18
06	SUBMITTED FOR M&E P.ENG.	AUG 31/18
05	RE-SUBMITTED FOR STRUCTURAL	MAR 9/18
04	SUBMITTED FOR ENGINEERING	SEPT 16/13
03	REVISED FOR CLIENT REVIEW	JUNE 29/12
02	REVISED FOR CLIENT REVIEW	APR 24/12
01	SUBMITTED FOR CLIENT REVIEW	APR 23/12
No.		DATE

PROJECT TITLE:

PROPOSED  
RETAIL BUILDING

6075 BANK ST.  
GREELY, ON

DRAWING TITLE:

EXTERIOR  
ELEVATIONS  
WINDOWS/DOORS  
SCHEDULE

PROJECT No. :

DATE:  
APRIL 20, 2012  
SCALE:  
3/16" = 1'- 0"  
DWG BY: G. MALETTE  
BCIN No. 26217

DWG No:

A-202

EXTERIOR FINISHES LEGEND:

METAL ROOF AND RIDGE VENT: IDEAL ROOFING  
HERITAGE (HF) PROFILE 24GA. 20 1/4" WIDE PANELS  
COL. MARITIME GREY ID 690

ALUMINUM FASCIA:  
COL. TO MATCH METAL ROOFING

VENTED ALUMINUM SOFFIT:  
COL. TO MATCH METAL ROOFING

CUSTOM METAL GABLE VENTS: SIDES  
VALSPAR WEATHER XL - COL. CHARCOAL ID 8306

CUSTOM METAL GABLE VENTS: FRONT & REAR  
VALSPAR WEATHER XL - COL. STONE GREY ID 8305

FRONT AND REAR GABLE SIDING & TRIM: IDEAL ROOFING  
URBAN ACCENT SERIES UA 1200  
VALSPAR WEATHER XL - COL. STONE GREY ID 8305  
URBAN ACCENT SERIES UA 1101  
VALSPAR WEATHER XL - COL. CHARCOAL ID 8306  
(REFER TO WALL ELEVATIONS)

PRE-PAINTED METAL FLASHING:  
VALSPAR WEATHER XL - COL. STONE GREY ID 8305

PERIMETER WALL METAL SIDING & TRIM: IDEAL ROOFING  
URBAN ACCENT SERIES UA 1200  
VALSPAR WEATHER XL - COL. STONE GREY ID 8305

PERIMETER WALL ACCENT BRICK: PERMACON  
MELVILLE SLIK BRICK (UNIT A) 3 3/4" X 3 3/4" X 10 3/4"  
COL. ROCKLAND BLACK (DARK GREY GROUT)

PRE-PAINTED METAL FLASHING:  
VALSPAR WEATHER XL - COL. STONE GREY ID 8305

PRE-PAINTED METAL WALL TO ROOF FLASHING:  
COL. MARITIME GREY ID 690

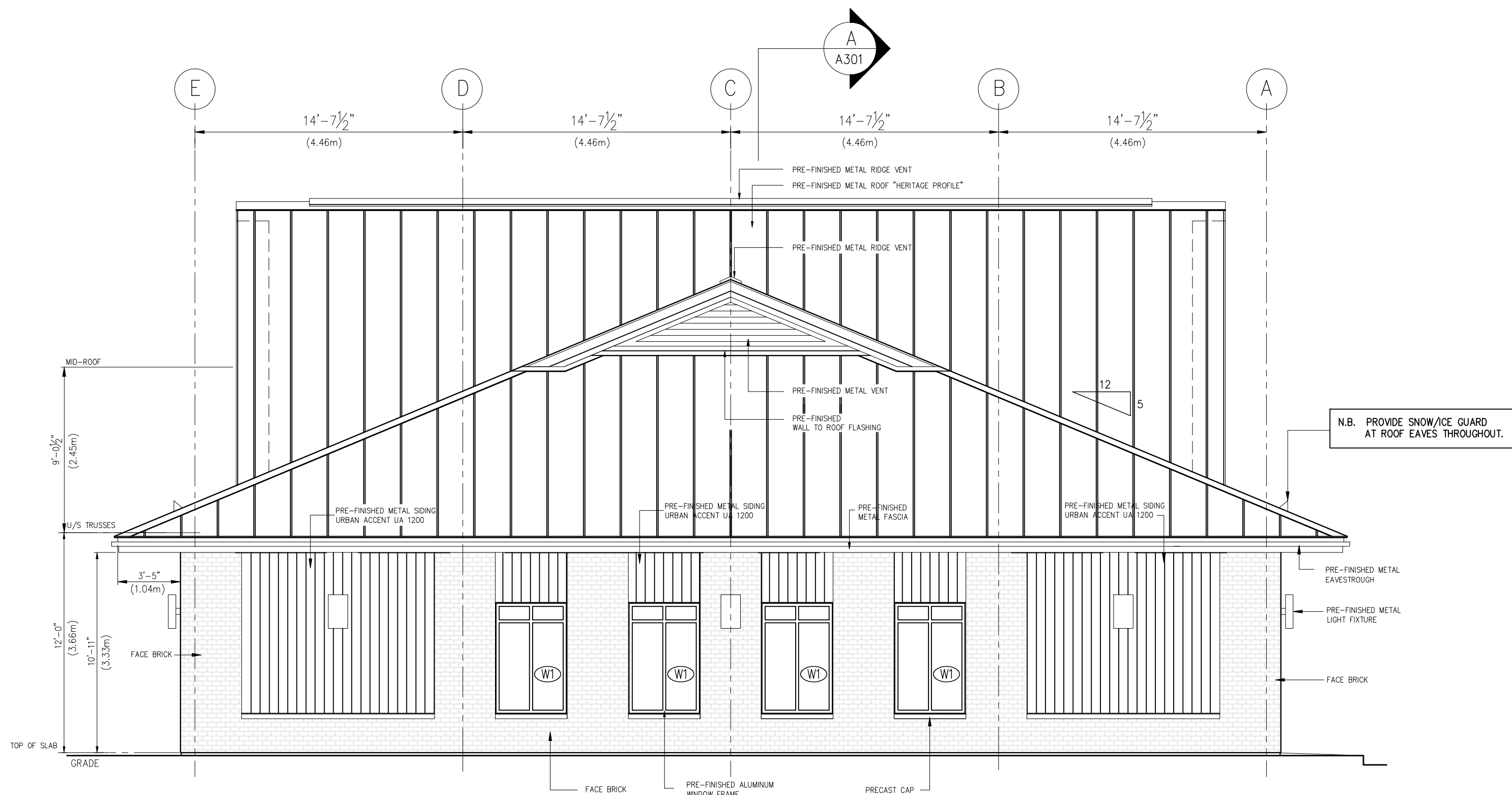
PRECAST CONCRETE WINDOW SILL/BRICK CAP:  
STANDARD GREY

PRE-PAINTED ALUMINUM WINDOWS AND DOORS:  
COL. BLACK - LOW SHEEN

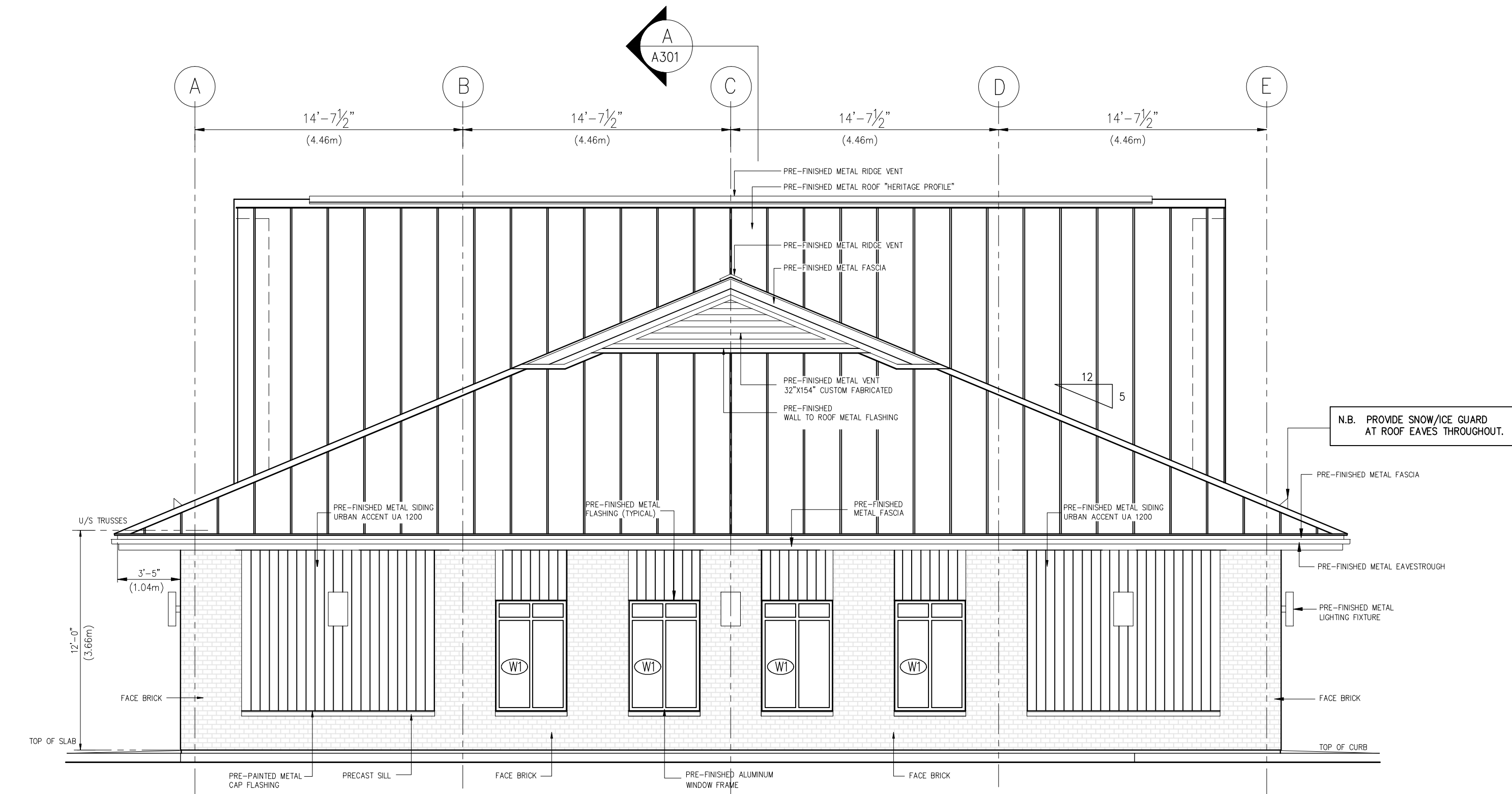
DOOR HARDWARE:  
STAINLESS STEEL FINISH

LIGHTING FIXTURES:  
BLACK - LOW SHEEN FINISH

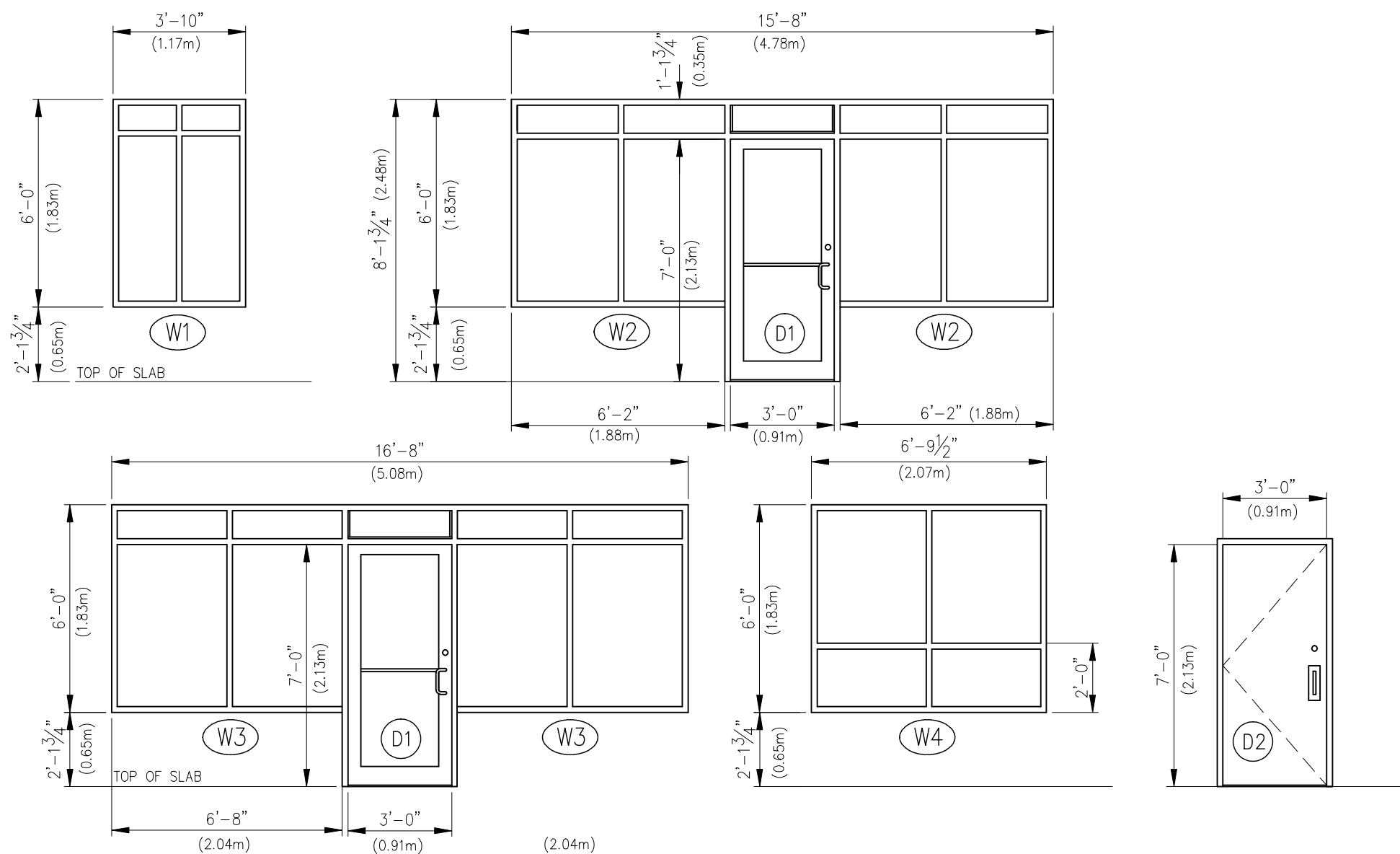
SIGN BOX FRAME:  
BLACK - LOW SHEEN FINISH



NORTHWEST ELEVATION



SOUTHEAST ELEVATION



WINDOWS AND DOORS SCHEDULE

N.B. ALL ALUMINUM FRAMES TO BE THERMALLY BROKEN

(W1) ANODIZED ALUMINUM FRAME - BLACK LOW SHEEN  
4 FIXED PANELS  
INSULATED GLASS C/W LOW-E, ARGON  
QUANTITY: 8

(W3) ANODIZED ALUMINUM FRAME - BLACK LOW SHEEN  
4 FIXED PANELS  
INSULATED GLASS C/W LOW-E, ARGON  
QUANTITY: 8

(D1) ANODIZED ALUMINUM FRAME - BLACK LOW SHEEN  
INSULATED TEMPERED GLASS C/W LOW-E, ARGON,  
WEATHERSTRIPPING, SWEEP,  
THERMALLY BROKEN ALUMINUM THRESHOLD,  
DOOR CLOSER - LONT460  
CH2815-1 FINISH 320 STAINLESS PUSH/PULL  
KEYED CYLINDER EXIT LOCK WITH INTERIOR THUMBTURN  
QUANTITY: 5

(W2) ANODIZED ALUMINUM FRAME - BLACK LOW SHEEN  
4 FIXED PANELS  
INSULATED GLASS C/W LOW-E, ARGON  
QUANTITY: 4

(W4) ANODIZED ALUMINUM FRAME - BLACK LOW SHEEN  
4 FIXED PANELS  
SINGLE GLASS  
QUANTITY: 4  
NOTE: WINDOW LOCATED IN ROOF DORMER GABLE WALL - NON HEATED SPACE  
ARCHITECTURAL DESIGN FEATURE ONLY

(D2) STEEL DOOR & FRAME C/W THERMO BREAK  
INSULATED CORE DOOR,  
WEATHERSTRIPPING, SWEEP,  
THERMALLY BROKEN ALUMINUM THRESHOLD,  
DOOR CLOSER - LONT460,  
ADAMS RITE 8400 PANIC SET WITH EXTERIOR PULL  
AND KEYED CYLINDER LOCK - STAINLESS  
QUANTITY: 6

GENERAL NOTE: ZONE 1 (I-P)  
OBC SB-10 DIV. 5 REQUIREMENTS FOR:  
VERTICAL FENESTRATION 0%-40% WALL/WINDOW RATIO  
MAXIMUM ASSEMBLY U-VALUE = 0.38  
MAXIMUM ASSEMBLY SHGC = 0.40  
MINIMUM VT/SHGC = 1.10

ENTRANCE DOORS  
MAXIMUM ASSEMBLY U-VALUE = 0.69  
MAXIMUM ASSEMBLY SHGC = 0.40

MINIMUM THERMAL RESISTANCE OF INSULATED CORE METAL DOORS = R4 OR RSI 0.7