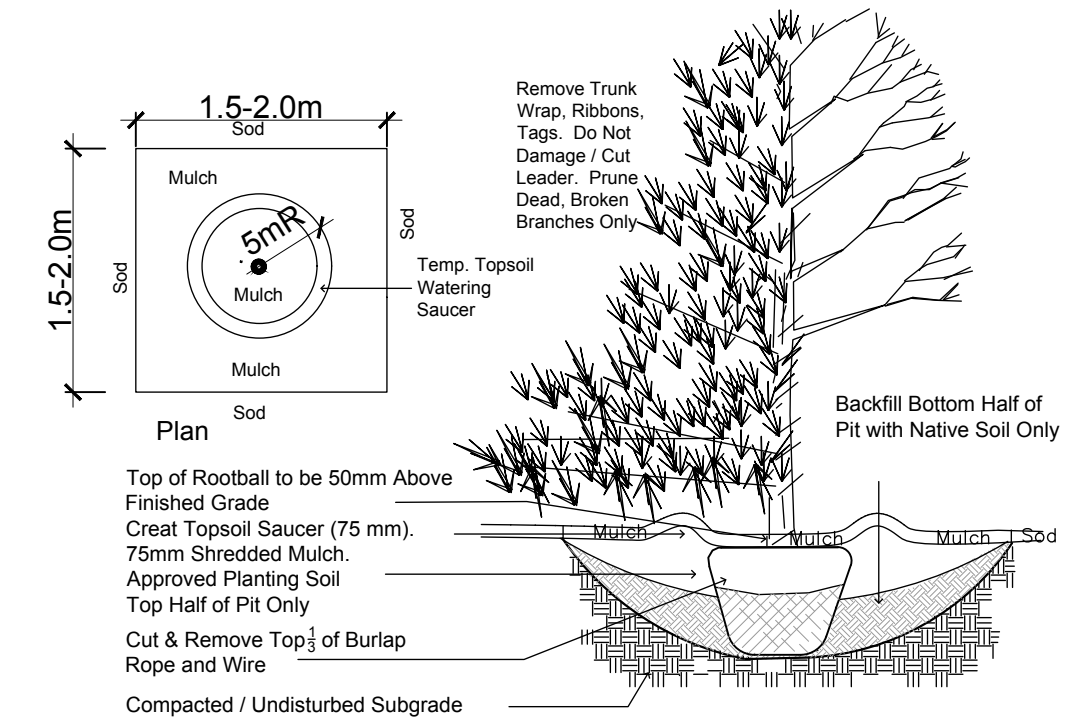
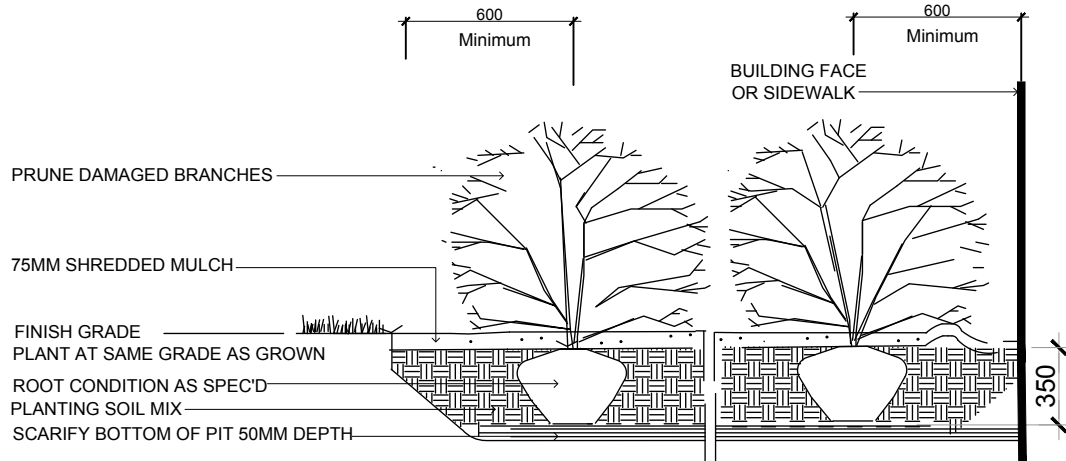


TURF AREAS TO BE SOD C/W 150MM DEPTH TOPSOIL ON APPROVED SUBGRADE.  
SOD TO BE NUMBER ONE GRADE TURFGRASS NURSERY SOD per NSGA - Fine Fescue/Kentucky Bluegrass Sod.  
PLANTING MIX TO BE APPROVED BY LANDSCAPE ARCHITECT.  
ALL PLANT MATERIAL TO MEET CNLA STANDARDS, AND BE APPROVED BY LANDSCAPE ARCHITECT PRIOR TO PLANTING.  
REFER TO CIVIL ENGINEER'S DRAWING FOR ELEVATIONS / GRADING.  
ALL WORK TO INCLUDE 1 YEAR WARRANTY FROM DATE OF FINAL ACCEPTANCE.  
MAINTAIN ALL AREAS UNTIL FINAL ACCEPTANCE, INCLUDING MOWING OF TURF, WEEDING OF BEDS, WATERING, SWEEPING HARD SURFACES.  
PROVIDE WATERING OF ALL PLANT MATERIAL AS REQUIRED FOR PROPER ESTABLISHMENT, UNTIL END OF WARRANTY PERIOD.  
The Landscape Plan is to be read in conjunction with the grading and survey plan, underground services engineering drawings, construction details and contract documents and cannot be used for construction until signed by the landscape architect. Bare root material to be planted in season only. All plant material locations to be staked on site by the landscape contractor and checked by the landscape architect prior to planting. All trees to be preserved on or directly adjacent to the site will be protected. Plant material are to be installed a minimum of; 3.0m away from any part of any hydro transformer, 3.0m corridor between a fire hydrant and the curb, a 2.5m radius beside or behind a fire hydrant, 2.0m from any servicing/utility line or structure.

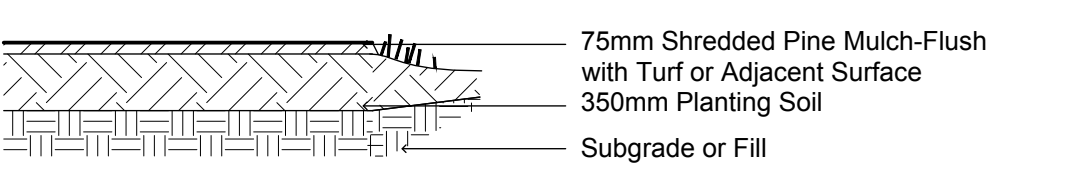
Plant List - Trees -119-121 Beechwood Avenue					
Code	Qty.	Botanical Name	Common Name	Size	Condition
AC	1	Amelanchier canadensis	Tree Serviceberry	60mm cal	B + B specimen
VL	1	Viburnum lentago	Nannyberry	60mm cal	B + B specimen
Plant List - Shrubs -119-121 Beechwood Avenue					
Code	Qty.	Botanical Name	Common Name	Size	Condition
CR	2	Cornus racemosa	Grey Dogwood	80cm Ht.	Pot
HK	55	Hypericum kalmianum	St. John's Wort	40cm Ht.	Pot
SA	35	Spiraea alba	Meadowsweet	60cm Ht.	Pot



TREE PLANTING  
Section  
NTS

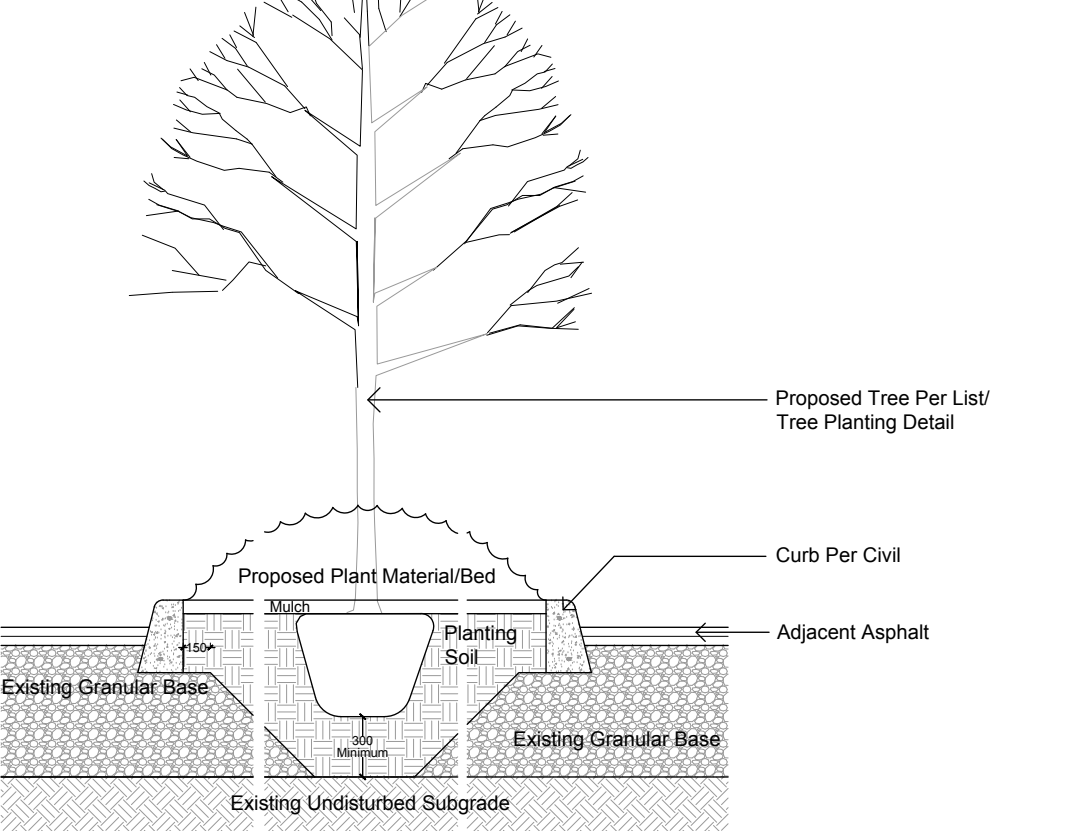


SHRUB PLANTING  
NTS

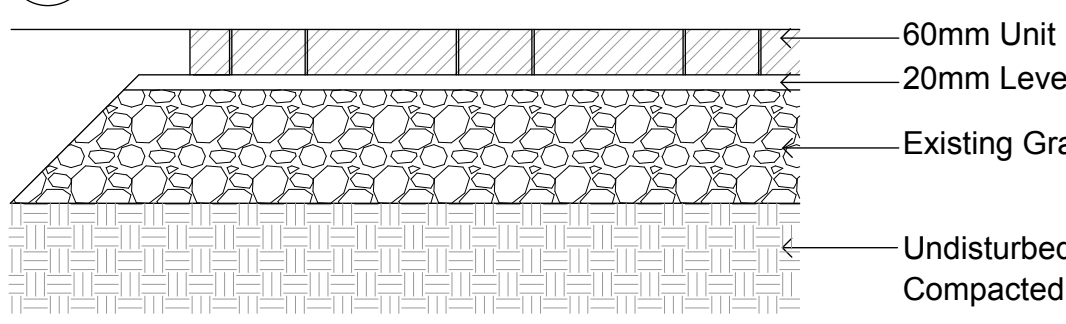


TYPICAL PLANTING BED  
NTS

During Excavation/Bed Preparation if Extreme Conditions are Encountered (Water, Rock, Gravel...) that Could Effect the Planting, Notify GJALA Immediately.



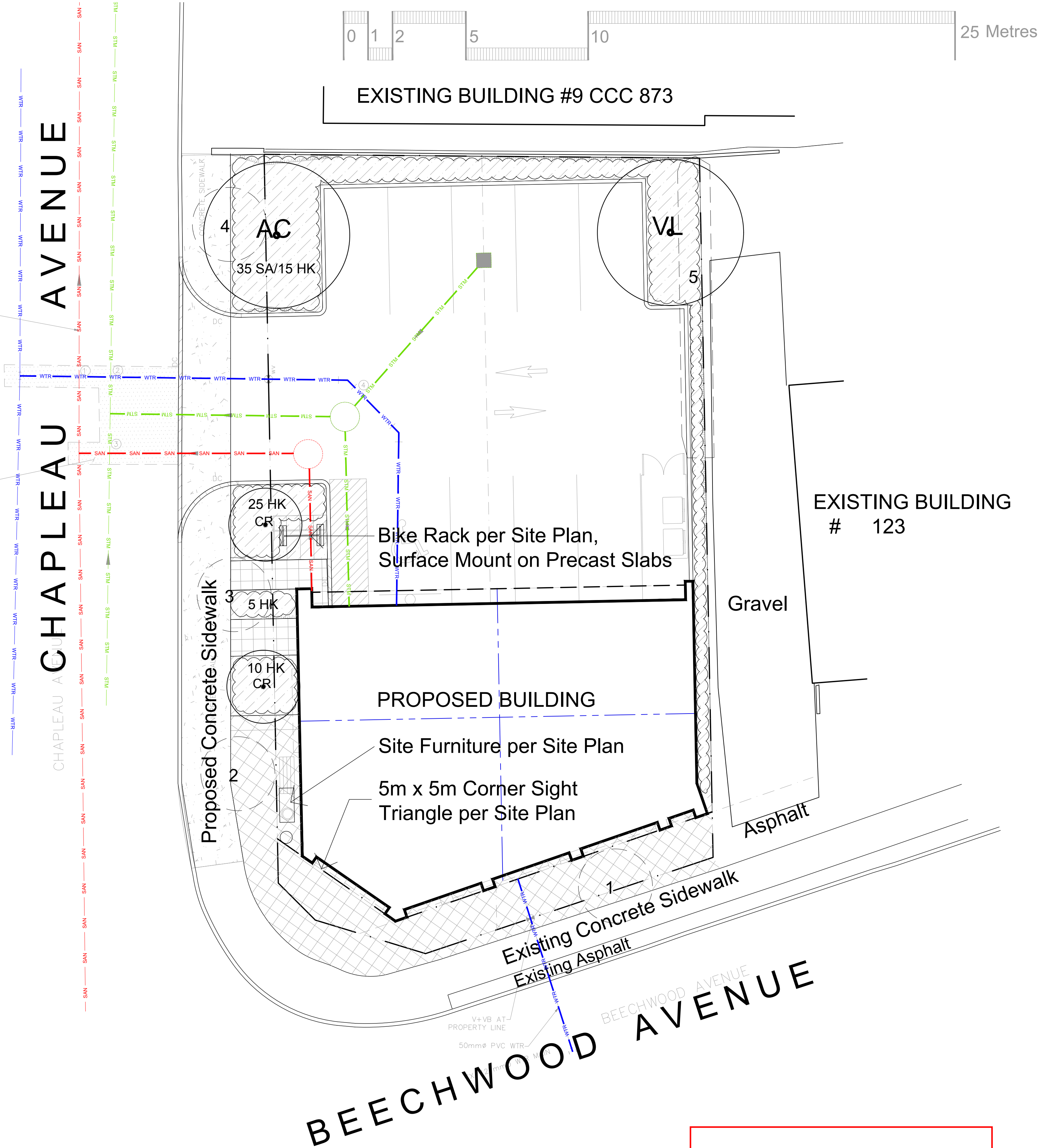
TYPICAL ISLAND LANDSCAPE DETAIL  
NTS



UNIT PAVING  
NTS

75.83m @ 250mmØ SAN @ 0.78%  
AS PER 3259P&P7 PROVIDED BY  
THE CITY OF OTTAWA.

ROAD CUT  
AS PER CITY STD DWG R10

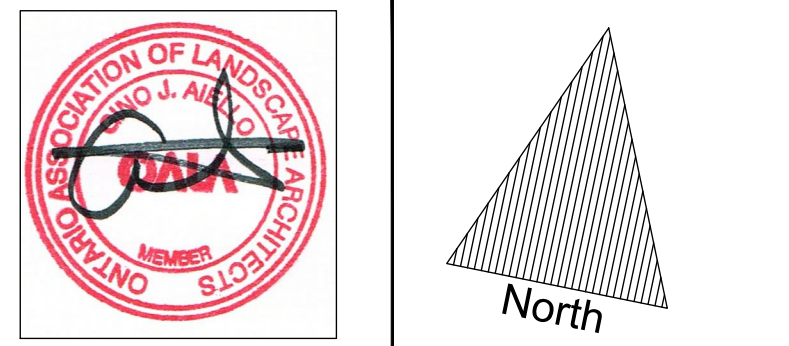


Drawing Remains the Property of Gino J. Aiello  
Landscape Architect. Copyright Reserved by Gino J.  
Aiello Landscape Architect. Do Not Use or  
Reproduce Without Approval of Gino J. Aiello. Do  
Not Use For Construction Unless Signed By  
Landscape Architect. Contractor is Responsible for  
Verification of Site Locations of all Utilities. Report  
any Discrepancies Between Site and Drawing  
Immediately to Gino J. Aiello.

- 3 Existing Tree to be Removed
- CR Proposed Deciduous MultiStem Shrub
- CR Proposed Deciduous Tree
- Proposed Planting Bed
- Proposed Pavers

Below Grade Services  
Per Civil

No	Revision	Date
6	BIKE PARKING RELOCATED	MAY 30 2019
5	SIGHT TRIANGLE ADDED	APRIL 25 2019
4	Site Plan Control 2nd Submission	MARCH 4 2019
3	For Site Plan Control 1st Submission	September 5 2018
2	For Coordination	July 19 2018
1	For Coordination	July 2018
R E V I S I O N S		



Property Owner  
**Dr. Corina Buettner**  
178 Beechwood Avenue  
Ottawa K1L 1A9  
(613) 749-0481

Gino J. Aiello landscape architect  
www.GJALA.com  
Gino@GJALA.com (613) 852 1343  
110 Didsbury Road Unit # 9 | Ottawa Ontario | K2T 0C2

Project	3 Storey Mixed Use Building	Sheet Number <b>L1</b>
	119-121 Beechwood Avenue	
Drawing	Landscape Plan	
Date:	JULY 2018	
Scale:	1:100	
City of Ottawa		
Dwg - 17848		

*Robert Sandercott*  
**ROBERT SANDERCOTT**  
**PLANNER**  
PLANNING, INFRASTRUCTURE & ECONOMIC  
DEVELOPMENT DEPARTMENT, CITY OF OTTAWA

**APPROVED**  
By Robert Sandercott at 9:03 am, Jul 26, 2019

D07-12-18-0145