

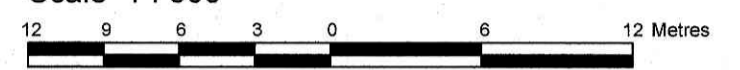


TOPOGRAPHICAL PLAN OF SURVEY OF

**BLOCK 29
REGISTERED PLAN 4M-1581
CITY OF OTTAWA**

Surveyed by Annis, O'Sullivan, Vollebek Ltd.

Scale 1 : 300



Metric
DISTANCES SHOWN ON THIS PLAN ARE IN METRES AND
CAN BE CONVERTED TO FEET BY DIVIDING BY 0.3048.

Surveyor's Certificate

- I CERTIFY THAT:
1. This survey and plan are correct and in accordance with the Surveys Act, the Surveyors Act and the Land Titles Act and the regulations made under them.
 2. The survey was completed on the 22nd day of April, 2019.

May 2, 2019
Date

A. J. Broxham
Andrew J. Broxham
Ontario Land Surveyor

Notes & Legend

Symbol	Denotes
□	Survey Monument Planted
■	Survey Monument Found
SIB	Standard Iron Bar
SSIB	Short Standard Iron Bar
SSIB*	Short Standard Iron Bar (0.3 Long)
IB	Iron Bar
(P1)	Registered Plan 4M-1581
(WIT)	Witness
Meas.	Measured
(AOG)	Annis, O'Sullivan, Vollebek Ltd.
○ MH-ST	Maintenance Hole (Storm Sewer)
○ MH	Maintenance Hole (Unidentified)
○ MH-S	Maintenance Hole (Sanitary)
○ MH-H	Maintenance Hole (Hydro)
⊕ VC	Valve Chamber (Watermain)
⊕ WV	Water Valve
CCP	Concrete Pipe
∅	Diameter
+65.00	Location of Elevations
+65.00	Top of Curb Elevations
+65.00	Top of Wall
—	Property Line
○ FH	Fire Hydrant
T/P	Top of Pipe
□ CB	Catch Basin
□ CBI	Catch Basin Inlet
T/G	Top of Grate
□ DI	Ditch Inlet
○ B	Bollard
□ TB-B	Bell Terminal Box
□ TB-C	Cable Terminal Box
○ LS	Light Standard
CRW	Concrete Retaining Wall

ASSOCIATION OF ONTARIO
LAND SURVEYORS
PLAN SUBMISSION FORM
2086184

THIS PLAN IS NOT VALID UNLESS
IT IS AN EMBOSSED ORIGINAL
COPY ISSUED BY THE SURVEYOR
In accordance with
Regulation 1026, Section 29 (3).

SITE AREA=1015.1 square metres

All bearing and distances between found survey monuments are (P1)&Meas.

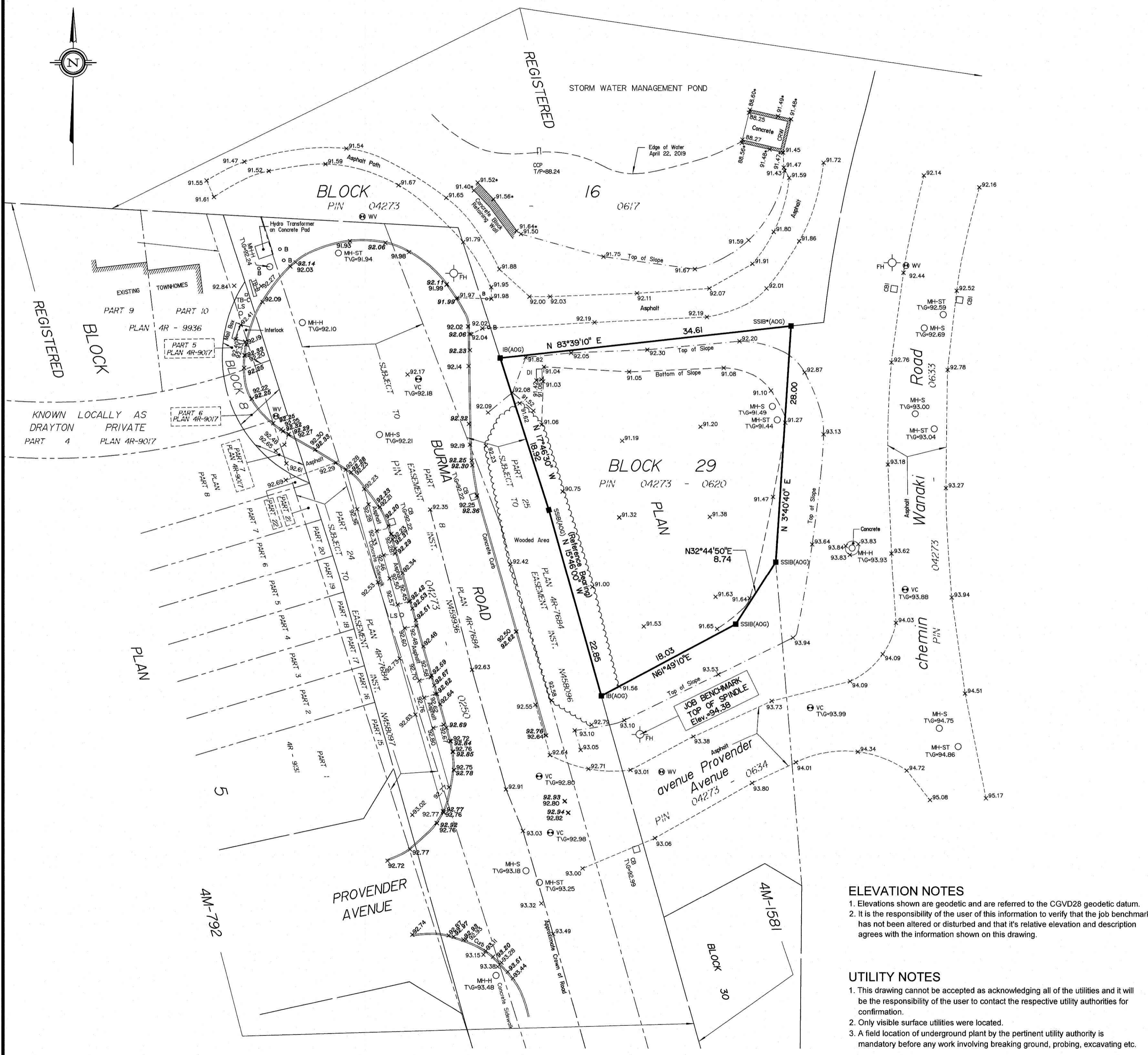
Bearings are grid, derived from the easterly limit of Burma Road shown to be N 15°46'00" W on Registered plan 4M-1581 and are referred to the Central Meridian of MTM Zone 9 (76°30' West Longitude) NAD-83 (original).

ELEVATION NOTES

1. Elevations shown are geodetic and are referred to the CGVD28 geodetic datum.
2. It is the responsibility of the user of this information to verify that the job benchmark has not been altered or disturbed and that its relative elevation and description agrees with the information shown on this drawing.

UTILITY NOTES

1. This drawing cannot be accepted as acknowledging all of the utilities and it will be the responsibility of the user to contact the respective utility authorities for confirmation.
2. Only visible surface utilities were located.
3. A field location of underground plant by the pertinent utility authority is mandatory before any work involving breaking ground, probing, excavating etc.



Y:\01917726-19\Habitat\Bk29-4M-1581.T.F.dwg, 5/20/2019 8:41:00 AM, HP, PageMax, XL, 4000

ANNIS, O'SULLIVAN, VOLLEBEK LTD.
14 Concourse Gate, Suite 500
Nepean, Ont. K2E 7S6
Phone: (613) 727-0850 / Fax: (613) 727-1079
Email: Nepean@aosvld.com

Ontario
Land Surveyors

Job No. 17726-19 Habitat Bk29 4M-1581 T.F. | 19