

PLANTING NOTES

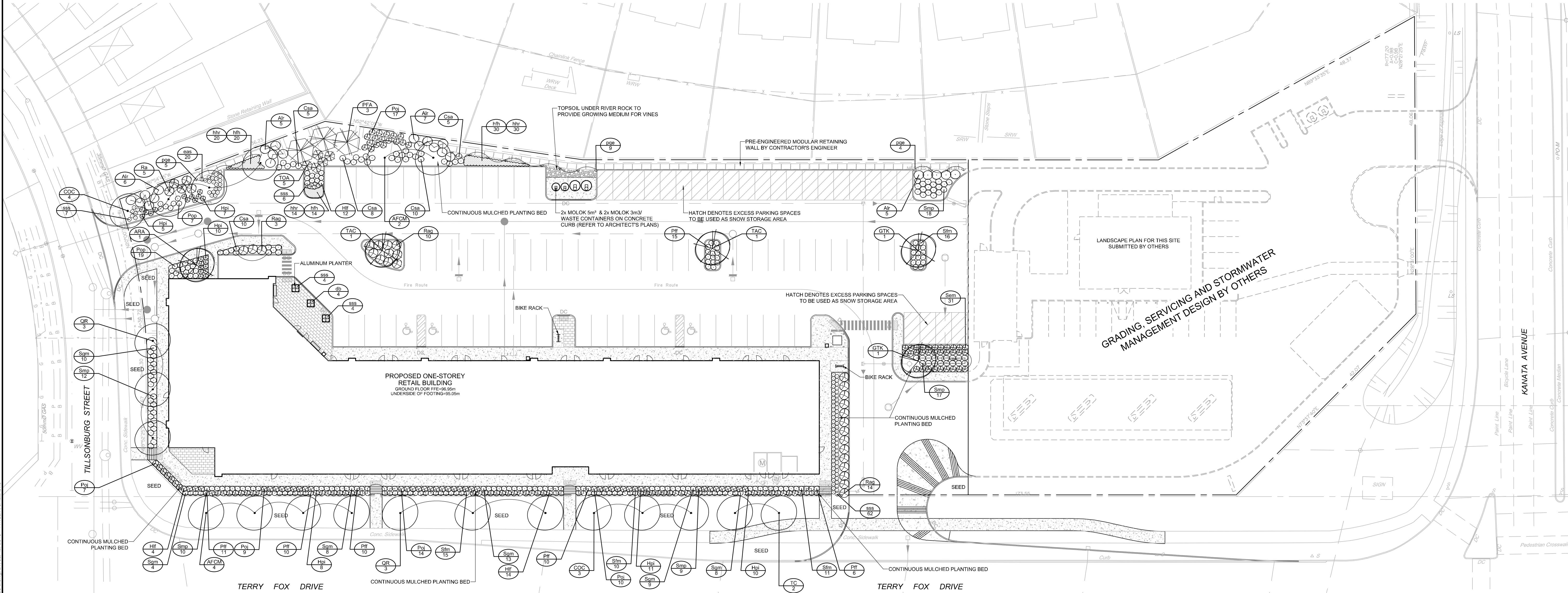
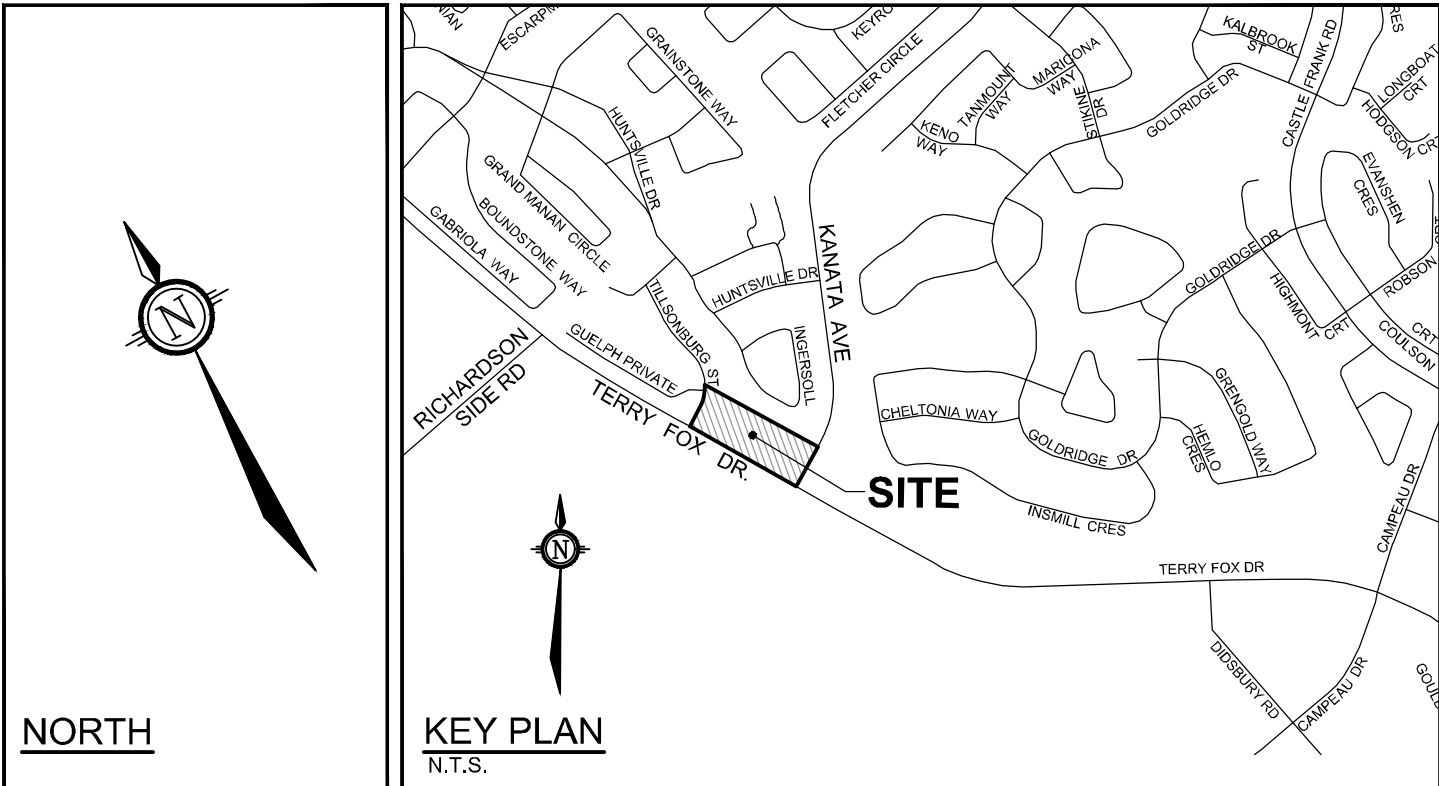
- This drawing shall be read in conjunction with all relevant **Architectural**, Engineering, and related drawings and documents.
- Refer to Engineering Drawings for Grading. Provide drainage as indicated in grading plan. Round all tops and toes of slopes, smoothly. Compact all areas to 95% Standard Proctor Density unless otherwise noted.
- Refer to **Architectural Drawings** for **site layout**.
- Refer to Engineering Drawings for site servicing.
- Contractor must contact utility companies for locates prior to excavation or planting.
- It is essential to use the plans and details in conjunction with the specifications and notes.
- Existing trees to be retained shall be protected according to the contract detail and specifications.
- Plant material shall be No. 1 Grade and shall comply with Canadian Standards for Nursery Stock (latest edition) published by the Canadian Nursery Landscape Association.
- Use plant material with strong fibrous root system free of disease, defects or injuries, and structurally sound. Use trees with straight trunks, well and characteristically branched for species. Obtain approval from consultant of plant material at source prior to digging. All trees and shrubs shall be container grown, potted, W/B or B/B, as indicated on Plant List. Bare root planting will only be acceptable for certain species and as approved by the Landscape Architect.
- Plant material substitutions shall not be permitted without the written approval from the consultant, **with 48 hours notice**, prior to shipping plant material.
- Plant locations are schematic / approximate only. **Contractor shall stake out locations on site for approval by the Landscape Architect prior to installation.** The illustrated number of plants shown in the Planting Plan supersedes the estimated number in the Plant List. Contractor to report any discrepancies to the Landscape Architect prior to installation. Contractor will assume full responsibility if the Landscape Architect is not notified.
- Shrubs, Perennials, Vines, and Groundcovers shall be planted in a continuous planting bed of **450mm** depth with approved topsoil covered with **75mm** depth shredded bark mulch.
- Ensure trees are thoroughly watered following planting. Monitor material and ensure adequate moisture until acceptance.
- In heavy clay or poorly drained soils, set root ball with root collar 75-100mm higher than finished grade.
- Sod and/or seed areas to receive **100mm** depth topsoil as specified. Sod shall be No. 1 Kentucky Bluegrass Sod grown from minimum mixture of 3 Kentucky Bluegrass cultivars. Quality and source shall comply with Canadian Standards for Nursery Stock, Section 17, (latest edition) published by the Canadian Nursery Landscape Nursery Landscape Association. Unless otherwise specified, turf is to be maintained by the contractor until a second cutting is accepted by the Landscape Architect.
- Apply the following mineral fertilizer unless soil tests show other requirements: Sodded areas - (8-32-16) 8% Nitrogen, 32% Phosphorus, 16% Potash at a rate of 350kg/ha. - Planting Beds - (8-32-16) - 8% Nitrogen, 32% Phosphorus, 16% Potash as per manufacturer specifications.
- Reinstate all areas damaged or disturbed beyond the Limit of Work.
- Refer to specifications:
NOVA 8020 Imported Topsoil
NOVA 8030 Sod
NOVA 8040 Seed and Cover (Hydraulic Seeding)
NOVA 8060 Trees, Shrubs and Groundcover Planting
NOVA 8061 Maintenance of Planting

118133 - Plant List		KEY	QTY	BOTANICAL NAME	COMMON NAME	SIZE	COND.	SPACING
Deciduous Trees								
ARA	1	Acer rubrum 'Armstrong'		Armstrong Red Maple	50mm Cal	WB	As Shown	
AFCM	6	Acer x freemanii 'Celzam'		Celebration Maple	50mm Cal	WB	As Shown	
COC	7	Celtis occidentalis 'Chicago Gold'		Chicago Gold Hackberry	50mm Cal	WB	As Shown	
OTK	2	Gleditsia inacanthos var. inermis 'Skycoat'		Skyline Honeylocust	50mm Cal	WB	As Shown	
OR	6	Quercus rubra		Red Oak	50mm Cal	WB	As Shown	
TAC	2	Tilia americana 'Continental Appeal'		Continental Appeal Linden	50mm Cal	WB	As Shown	
TC	2	Tilia cordata 'Greenspire'		Greenspire Linden	50mm Cal	WB	As Shown	
Coniferous Trees								
PFA	3	Picea pungens 'Fat Albert'		Fat Albert Spruce	200cm Ht	WB	As Shown	
TOA	5	Thuja occidentalis - 'Art Boe'		North Pole Cedar	200cm Ht	WB	As Shown	
Deciduous Shrubs								
Air	23	Amelanchier alnifolia 'Regent'		Saskatoon Serviceberry	60cm Ht	PT	As Shown	
Csa	38	Cornus sericea 'Farrow'		Arctic Fire Dogwood	60cm Ht	PT	As Shown	
Hpl	51	Hydrangea paniculata 'Invivo'		Bobo Dwarf Hydrangea	60cm Ht	PT	As Shown	
Hfr	30	Hydrangea paniculata 'SMHPLQF'		Little Quick Fire Hydrangea	60cm Ht	PT	As Shown	
Ptf	62	Potentilla fruticosa 'Fargo'		Dakota Sunspot Potentilla	60cm Ht	PT	As Shown	
Poj	57	Physocarpus opulifolius 'JEFAM'		Amber Jubilee Ninebark	60cm Ht	PT	As Shown	
Pup	26	Physocarpus opulifolius 'Podaras 1'		Gumdrop Burgundy Candy Ninebark	50cm Ht	PT	As Shown	
Ra	5	Rhus aromatica		Fragrant Sumac	60cm Ht	PT	As Shown	
Rag	27	Rhus aromatica 'Gro-Low'		Gro-Low Fragrant Sumac	60cm Ht	PT	As Shown	
Sem	31	Sorbaria sorbifolia 'Sem'		Sem False Spirea	60cm Ht	PT	As Shown	
Sfm	52	Spiraea japonica 'Flaming Mound'		Flaming Mound Spirea	40cm Ht	PT	As Shown	
Sgm	52	Spiraea japonica 'Goldmound'		Goldmound Spirea	60cm Ht	PT	As Shown	
Smp	66	Syringa meyeri 'Palatin'		Dwarf Korean Lilac	60cm Ht	PT	As Shown	
Ornamental Grasses								
db	4	Deschampsia cespitosa 'Bronzeschiele'		Bronze Vell Tufted Hair Grass	1g	PT	As Shown	
ees	20	Elymus arenarius		Blue Lyme Grass	1g	PT	As Shown	
sss	83	Schizachyrium scoparium 'Smoke Signal'		Smoke Signal Little Blue Stem	1g	PT	As Shown	
Perennials								
hfh	64	Hemerocallis 'Frans Hals'		Frans Hals Daylily	1g	PT	45cm O.C	
hhr	64	Hemerocallis 'Happy Returns'		Happy Returns Daylily	1g	PT	45cm O.C	
Vines								
pge	18	Parthenocissus quinquefolia 'Engelmannii'		Engelmann's Ivy	1g	PT	3m O.C	

TREE CONSERVATION REPORT NOTE:
A PRELIMINARY SITE REVIEW, IN PREPARATION FOR THE REQUIRED TREE CONSERVATION REPORT, DETERMINED THAT THERE ARE NO EXISTING TREES ON THIS SITE.

LANDSCAPE LEGEND:

- PROPOSED DECIDUOUS TREE
- PROPOSED CONIFEROUS TREE
- PROPOSED SHRUBS
- PROPOSED ORNAMENTAL GRASSES
- PROPOSED PERENNIALS
- SPECIES (SEE PLANT LIST)
- QUANTITY
- PROPOSED BENCH
- PROPOSED TRASH CONTAINER
- PROPOSED PRECAST PAVERS
- PROPOSED POURED CONCRETE
- PROPOSED RIVERSTONE GROUND COVER



NOTE:
THE POSITION OF ALL POLE LINES, CONDUITS, WATERMAINS, SEWERS AND OTHER UNDERGROUND AND OVERGROUND UTILITIES AND STRUCTURES IS NOT NECESSARILY SHOWN ON THE CONTRACT DRAWINGS, AND WHERE SHOWN, THE ACCURACY OF THE POSITION OF SUCH UTILITIES AND STRUCTURES IS NOT GUARANTEED, BEFORE STARTING WORK, DETERMINE THE EXACT LOCATION OF ALL SUCH UTILITIES AND STRUCTURES AND ASSUME ALL LIABILITY FOR DAMAGE TO THEM.

NOT FOR CONSTRUCTION

OWNER INFORMATION
7873794 CANADA INC
43 AURIGA DRIVE, 2ND FLOOR
NEPEAN, ONTARIO, K2E 7Y8
DENNIS LAURIN
TEL: 613-656-0672
dennis.laurin@laurin.ca

CONSULTANTS
DCA - A GROUP OF ARCHITECTS (ARCHITECTS)
1350 WELLINGTON ST. WEST
OTTAWA, ONTARIO, K1Y 3C1
TEL: 613-725-2294

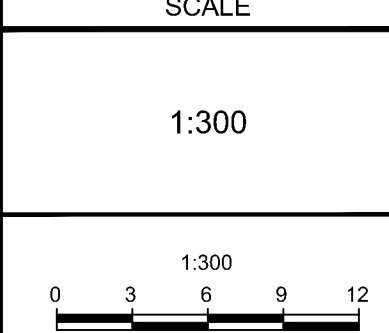
NOVATECH ENGINEERING CONSULTANTS LTD.
(CIVIL ENGINEERS, PLANNERS & LANDSCAPE ARCHITECTS)
240 MICHAEL COWPLAND DRIVE, SUITE 200 OTTAWA,
ONTARIO, K2M 1P6
TEL: 613-254-9643

CLELAND JARDINE ENGINEERING LTD.
(STRUCTURAL ENGINEERS)
200-580 TERRY FOX DRIVE,
KANATA, ONTARIO, K2L 4B8
TEL: 613-911-1533

EVEREST ENGINEERING LTD.
(MECHANICAL & ELECTRICAL ENGINEERS)
6861 FALLOWFIELD ROAD,
OTTAWA, ONTARIO, K2S 1B8
TEL: 813-831-5454

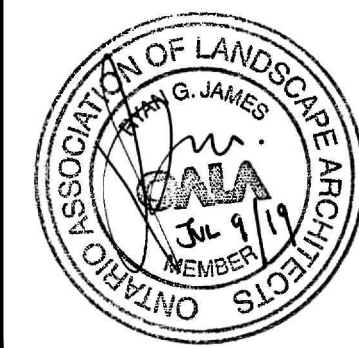
ANNIS, O'SULLIVAN, VOLLEBECK LTD.
(SURVEYORS)
14 CONCOURSE GATE, SUITE 500
OTTAWA, ONTARIO, K2E 7S6
TEL: 613-727-0850

No.	REVISION	DATE	BY
3	REVISED PER CITY COMMENTS	JULY 9/19	SC
2	REVISED PER CITY COMMENTS	MAY 10/19	SC
1	ISSUED FOR SITE PLAN APPROVAL	JAN 25/19	SC



DESIGN	SC
CHECKED	SC
DRAWN	ML
CHECKED	SC
APPROVED	RGJ

FOR REVIEW ONLY



NOVATECH
Engineers, Planners & Landscape Architects
Suite 200, 240 Michael Cowpland Drive
Ottawa, Ontario, Canada K2M 1P6
Telephone: (613) 254-9643
Facsimile: (613) 254-5867
Website: www.novatech-eng.com

LOCATION
CITY OF OTTAWA - 471 TERRY FOX DRIVE
HERITAGE HILLS RETAIL PLAZA

DRAWING NAME
LANDSCAPE PLAN

PROJECT No.
118133
REV
REV # 3
DRAWING No.
118133-L1
Plan # 17868

D07-12-19-0017