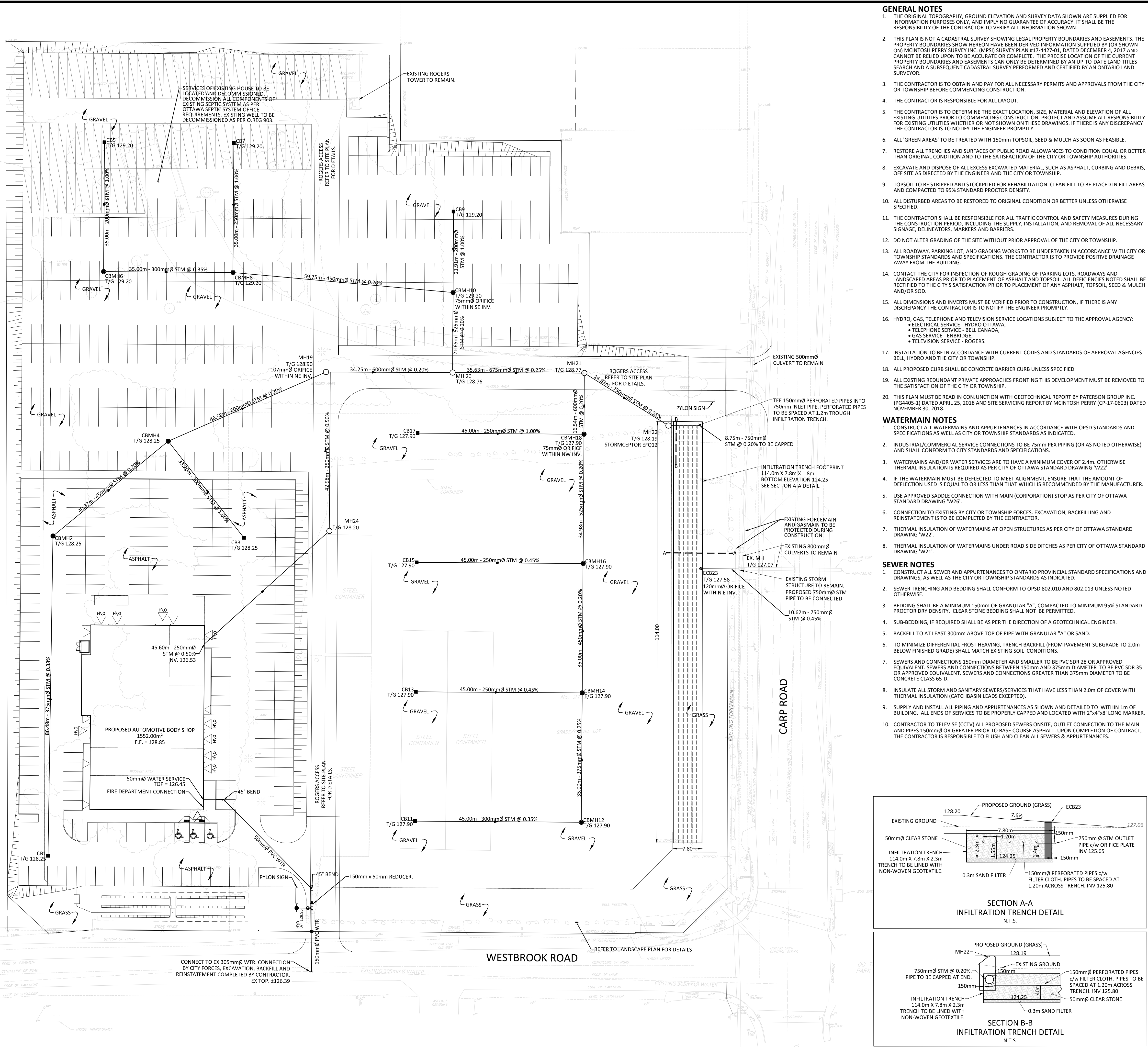
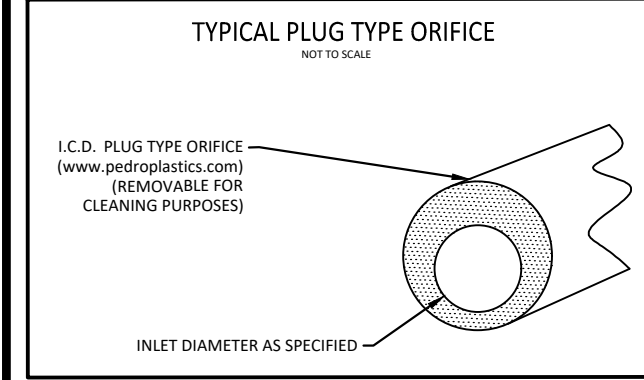


STM STRUCTURE TABLE				
NAME	RIM ELEV.	INVERT IN	INVERT OUT	DESCRIPTION
CB1	128.25		NW126.870	COVER CITY STD S19 FRAME CITY STD S19 STRUC. OPSD 705.010
CB3	128.25		W126.870	COVER CITY STD S19 FRAME CITY STD S19 STRUC. OPSD 705.010
CB5	129.20		SE127.820	COVER CITY STD S19 FRAME CITY STD S19 STRUC. OPSD 705.010
CB7	129.20		SE127.820	COVER CITY STD S19 FRAME CITY STD S19 STRUC. OPSD 705.010
CB9	129.20		SE127.820	COVER CITY STD S19 FRAME CITY STD S19 STRUC. OPSD 705.010
CB11	127.90		NE126.642	COVER CITY STD S19 FRAME CITY STD S19 STRUC. OPSD 705.010
CB13	127.90		NE126.510	COVER CITY STD S19 FRAME CITY STD S19 STRUC. OPSD 705.010
CB15	127.90		NE126.365	COVER CITY STD S19 FRAME CITY STD S19 STRUC. OPSD 705.010
CB17	127.90		NE126.520	COVER CITY STD S19 FRAME CITY STD S19 STRUC. OPSD 705.010
CBMH2	128.25	SE126.541	N126.466	COVER CITY STD S28.1 FRAME CITY STD S25 STRUC. OPSD 701.010
CBMH4	128.25	S126.385 E126.538	NE126.235	COVER CITY STD S28.1 FRAME CITY STD S25 STRUC. OPSD 701.011
CBMH6	129.20	NW127.470	NE126.900	COVER CITY STD S28.1 FRAME CITY STD S25 STRUC. OPSD 701.010
CBMH8	129.20	SW126.778 NW127.470	NE126.628	COVER CITY STD S28.1 FRAME CITY STD S25 STRUC. OPSD 701.010
CBMH10	129.20	SW126.508 NW127.601	SE126.448	COVER CITY STD S28.1 FRAME CITY STD S25 STRUC. OPSD 701.010
CBMH12	127.90	SW126.485	NW126.410	COVER CITY STD S28.1 FRAME CITY STD S25 STRUC. OPSD 701.010
CBMH14	127.90	SE126.322 SW126.307	NW126.247	COVER CITY STD S28.1 FRAME CITY STD S25 STRUC. OPSD 701.010
CBMH16	127.90	SE126.177 SW126.162	NW126.102	COVER CITY STD S28.1 FRAME CITY STD S25 STRUC. OPSD 701.010
CBMH18	127.90	SE126.032 SW126.070	NW125.957	COVER CITY STD S28.1 FRAME CITY STD S25 STRUC. OPSD 701.010
ECB23	127.60		NE125.648	CITY STD DWG S31 (PERFORATED)
MH 20	128.76	SW126.013 NW126.405	NE125.938	COVER CITY STD S28.1 FRAME CITY STD S25 STRUC. OPSD 701.011
MH19	128.90	SW126.142	NE126.082	COVER CITY STD S28.1 FRAME CITY STD S25 STRUC. OPSD 701.011
MH21	128.77	SW125.849 SE125.924	E125.774	COVER CITY STD S28.1 FRAME CITY STD S25 STRUC. OPSD 701.013
MH22	128.19	W125.680	NE125.669	STORMCEPTOR EFO12
MH24	128.20	S126.300	NW126.275	COVER CITY STD S28.1 FRAME CITY STD S25 STRUC. OPSD 701.010
EX. MH	127.07	N125.600 S125.620 W125.600	E125.55	EXISTING MAINTENANCE HOLE

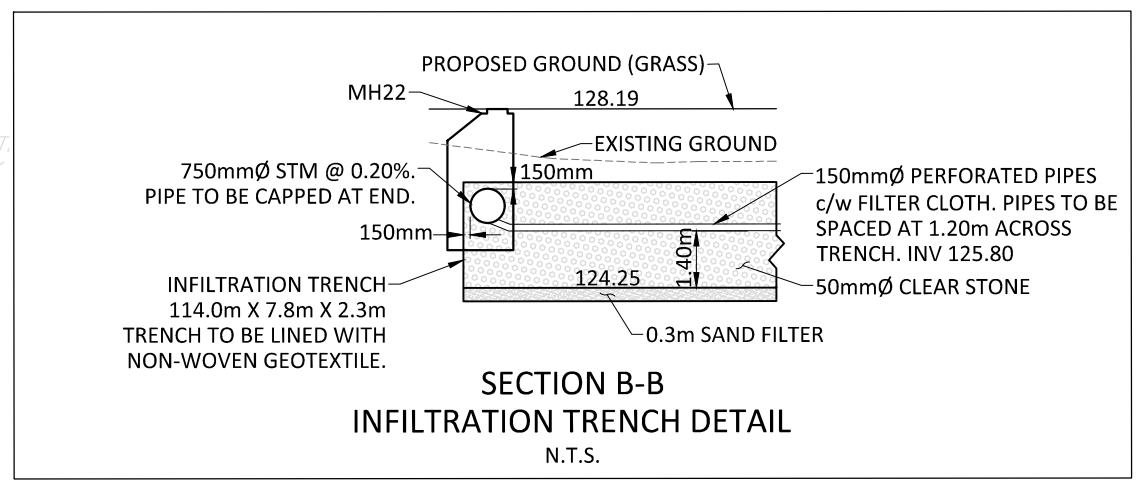
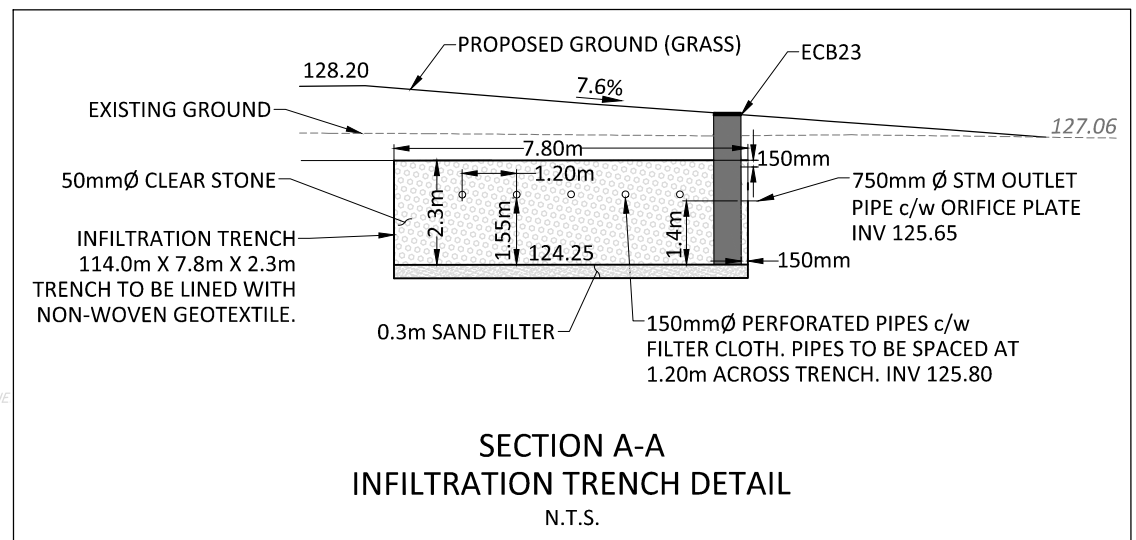
WATER COVER TABLE				
LOCATION	STATION	FINISHED GRADE	TOP OF PIPE	DEPTH OF PIPE
305 x 150 TEE	0+000.00	128.790	126.390	2.400
VALVE	0+011.02	128.900	126.500	2.400
150 x 150 TEE	0+017.33	128.700	126.300	2.400
REDUCER	0+019.33	128.620	126.220	2.400
45° BEND	0+022.39	128.400	126.000	2.400
45° BEND	0+056.34	128.700	126.300	2.400
BUILDING	0+061.86	128.850	126.450	2.400
150 x 150 TEE	0+000.00	128.700	126.300	2.400
VALVE	0+001.14	128.730	126.330	2.400
HYDRANT	0+004.14	128.800	126.400	2.400



- ### GENERAL NOTES
- THE ORIGINAL TOPOGRAPHY, GROUND ELEVATION AND SURVEY DATA SHOWN ARE SUPPLIED FOR INFORMATION PURPOSES ONLY, AND IMPLY NO GUARANTEE OF ACCURACY. IT SHALL BE THE RESPONSIBILITY OF THE CONTRACTOR TO VERIFY ALL INFORMATION SHOWN.
 - THIS PLAN IS NOT A CADASTRAL SURVEY SHOWING LEGAL PROPERTY BOUNDARIES AND EASEMENTS. THE PROPERTY BOUNDARIES SHOWN HEREON HAVE BEEN DERIVED INFORMATION SUPPLIED BY (OR SHOWN ON) MCINTOSH PERRY SURVEY INC. (MPSI) SURVEY PLAN R17-4427-01, DATED DECEMBER 4, 2017 AND CANNOT BE RELIED UPON TO BE ACCURATE OR COMPLETE. THE PRECISE LOCATION OF THE CURRENT PROPERTY BOUNDARIES AND EASEMENTS CAN ONLY BE DETERMINED BY AN UP-TO-DATE LAND TITLES SEARCH AND A SUBSEQUENT CADASTRAL SURVEY PERFORMED AND CERTIFIED BY AN ONTARIO LAND SURVEYOR.
 - THE CONTRACTOR IS TO OBTAIN AND PAY FOR ALL NECESSARY PERMITS AND APPROVALS FROM THE CITY OR TOWNSHIP BEFORE COMMENCING CONSTRUCTION.
 - THE CONTRACTOR IS RESPONSIBLE FOR ALL LAYOUT.
 - THE CONTRACTOR IS TO DETERMINE THE EXACT LOCATION, SIZE, MATERIAL AND ELEVATION OF ALL EXISTING UTILITIES PRIOR TO COMMENCING CONSTRUCTION. PROTECT AND ASSUME ALL RESPONSIBILITY FOR EXISTING UTILITIES WHETHER OR NOT SHOWN ON THESE DRAWINGS. IF THERE IS ANY DISCREPANCY THE CONTRACTOR IS TO NOTIFY THE ENGINEER PROMPTLY.
 - ALL "GREEN AREAS" TO BE TREATED WITH 150mm TOPSOIL, SEED & MULCH AS SOON AS FEASIBLE.
 - RESTORE ALL TRENCHES AND SURFACES OF PUBLIC ROAD ALLOWANCES TO CONDITION EQUAL OR BETTER THAN ORIGINAL CONDITION AND TO THE SATISFACTION OF THE CITY OR TOWNSHIP AUTHORITIES.
 - EXCAVATE AND DISPOSE OF ALL EXCESS EXCAVATED MATERIAL, SUCH AS ASPHALT, CURBING AND DEBRIS, OFF-SITE AS DIRECTED BY THE ENGINEER AND THE CITY OR TOWNSHIP.
 - TOPSOIL TO BE STRIPPED AND STOCKPILED FOR REHABILITATION. CLEAN FILL TO BE PLACED IN FILL AREAS AND COMPACTED TO 95% STANDARD PROCTOR DENSITY.
 - ALL DISTURBED AREAS TO BE RESTORED TO ORIGINAL CONDITION OR BETTER UNLESS OTHERWISE SPECIFIED.
 - THE CONTRACTOR SHALL BE RESPONSIBLE FOR ALL TRAFFIC CONTROL AND SAFETY MEASURES DURING THE CONSTRUCTION PERIOD, INCLUDING THE SUPPLY, INSTALLATION, AND REMOVAL OF ALL NECESSARY SIGNAGE, DELINEATORS, MARKERS AND BARRIERS.
 - DO NOT ALTER GRADING OF THE SITE WITHOUT PRIOR APPROVAL OF THE CITY OR TOWNSHIP.
 - ALL ROADWAY, PARKING LOT, AND GRADING WORKS TO BE UNDERTAKEN IN ACCORDANCE WITH CITY OR TOWNSHIP STANDARDS AND SPECIFICATIONS. THE CONTRACTOR IS TO PROVIDE POSITIVE DRAINAGE AWAY FROM THE BUILDING.
 - CONTACT THE CITY FOR INSPECTION OF ROUGH GRADING OF PARKING LOTS, ROADWAYS AND LANDSCAPED AREAS PRIOR TO PLACEMENT OF ASPHALT AND TOPSOIL. ALL DEFICIENCIES NOTED SHALL BE RECTIFIED TO THE CITY'S SATISFACTION PRIOR TO PLACEMENT OF ANY ASPHALT, TOPSOIL, SEED & MULCH AND/OR SOD.
 - ALL DIMENSIONS AND INVERTS MUST BE VERIFIED PRIOR TO CONSTRUCTION. IF THERE IS ANY DISCREPANCY THE CONTRACTOR IS TO NOTIFY THE ENGINEER PROMPTLY.
 - HYDRO, GAS, TELEPHONE AND TELEVISION SERVICE LOCATIONS SUBJECT TO THE APPROVAL AGENCY:
 - ELECTRICAL SERVICE - HYDRO ONTARIO,
 - TELEPHONE SERVICE - BELL CANADA,
 - GAS SERVICE - ENBRIDGE,
 - TELEVISION SERVICE - ROGERS.
 - INSTALLATION TO BE IN ACCORDANCE WITH CURRENT CODES AND STANDARDS OF APPROVAL AGENCIES BELL, HYDRO AND THE CITY OR TOWNSHIP.
 - ALL PROPOSED CURB SHALL BE CONCRETE BARRIER CURB UNLESS SPECIFIED.
 - ALL EXISTING REDUNDANT PRIVATE APPROACHES FRONTING THIS DEVELOPMENT MUST BE REMOVED TO THE SATISFACTION OF THE CITY OR TOWNSHIP.
 - THIS PLAN MUST BE READ IN CONJUNCTION WITH GEOTECHNICAL REPORT BY PATERSON GROUP INC. (PG4005-1) DATED APRIL 25, 2018 AND SITE SERVICING REPORT BY MCINTOSH PERRY (CP-17-0603) DATED NOVEMBER 30, 2018.

- ### WATERMAIN NOTES
- CONSTRUCT ALL WATERMANS AND APPURTENANCES IN ACCORDANCE WITH OPSD STANDARDS AND SPECIFICATIONS AS WELL AS CITY OR TOWNSHIP STANDARDS AS INDICATED.
 - INDUSTRIAL/COMMERCIAL SERVICE CONNECTIONS TO BE 75mm PEX PIPING (OR AS NOTED OTHERWISE) AND SHALL CONFORM TO CITY STANDARDS AND SPECIFICATIONS.
 - WATERMANS AND/OR WATER SERVICES ARE TO HAVE A MINIMUM COVER OF 2.4m. OTHERWISE THERMAL INSULATION IS REQUIRED AS PER CITY OF OTTAWA STANDARD DRAWING "W22".
 - IF THE WATERMAIN MUST BE DEFLECTED TO MEET ALIGNMENT, ENSURE THAT THE AMOUNT OF DEFLECTION USED IS EQUAL TO OR LESS THAN THAT WHICH IS RECOMMENDED BY THE MANUFACTURER.
 - USE APPROVED SADDLE CONNECTION WITH MAIN (CORPORATION) STOP AS PER CITY OF OTTAWA STANDARD DRAWING "W26".
 - CONNECTION TO EXISTING BY CITY OR TOWNSHIP FORCES. EXCAVATION, BACKFILLING AND REINSTATEMENT IS TO BE COMPLETED BY THE CONTRACTOR.
 - THERMAL INSULATION OF WATERMANS AT OPEN STRUCTURES AS PER CITY OF OTTAWA STANDARD DRAWING "W22".
 - THERMAL INSULATION OF WATERMANS UNDER ROAD SIDE DITCHES AS PER CITY OF OTTAWA STANDARD DRAWING "W21".

- ### SEWER NOTES
- CONSTRUCT ALL SEWER AND APPURTENANCES TO ONTARIO PROVINCIAL STANDARD SPECIFICATIONS AND DRAWINGS, AS WELL AS THE CITY OR TOWNSHIP STANDARDS AS INDICATED.
 - SEWER TRENCHING AND BEDDING SHALL CONFORM TO OPSD 802.010 AND 802.013 UNLESS NOTED OTHERWISE.
 - BEDDING SHALL BE A MINIMUM 150mm OF GRANULAR "A", COMPACTED TO MINIMUM 95% STANDARD PROCTOR DRY DENSITY. CLEAR STONE BEDDING SHALL NOT BE PERMITTED.
 - SUB-BEDDING, IF REQUIRED SHALL BE AS PER THE DIRECTION OF A GEOTECHNICAL ENGINEER.
 - BACKFILL TO AT LEAST 300mm ABOVE TOP OF PIPE WITH GRANULAR "A" OR SAND.
 - TO MINIMIZE DIFFERENTIAL FROST HEAVING, TRENCH BACKFILL (FROM PAVEMENT SUBGRADE TO 2.0m BELOW FINISHED GRADE) SHALL MATCH EXISTING SOIL CONDITIONS.
 - SEWERS AND CONNECTIONS 150mm DIAMETER AND SMALLER TO BE PVC SDR 28 OR APPROVED EQUIVALENT. SEWERS AND CONNECTIONS BETWEEN 150mm AND 375mm DIAMETER TO BE PVC SDR 35 OR APPROVED EQUIVALENT. SEWERS AND CONNECTIONS GREATER THAN 375mm DIAMETER TO BE CONCRETE CLASS 65-D.
 - INSULATE ALL STORM AND SANITARY SEWERS/SERVICES THAT HAVE LESS THAN 2.0m OF COVER WITH THERMAL INSULATION (CATCHBASIN LEADS EXCEPTED).
 - SUPPLY AND INSTALL ALL PIPING AND APPURTENANCES AS SHOWN AND DETAILED TO. WITHIN 1m OF BUILDING. ALL ENDS OF SERVICES TO BE PROPERLY CAPPED AND LOCATED WITH 2"x4"x8" LONG MARKER.
 - CONTRACTOR TO TELEVIEW (CCTV) ALL PROPOSED SEWERS ON-SITE. OUTLET CONNECTION TO THE MAIN AND PIPES 150mm Ø OR GREATER PRIOR TO BASE COURSE ASPHALT. UPON COMPLETION OF CONTRACT, THE CONTRACTOR IS RESPONSIBLE TO FLUSH AND CLEAN ALL SEWERS & APPURTENANCES.



LOCATION PLAN

LEGEND

DC	BARRIER CURB	SILT FENCE (AS PER OPSD 219.130)
---	CURB DEPRESSION	STRAW BALE CHECK DAM (AS PER OPSD 219.180)
---	MOUNTABLE CURB	BUILDING ENTRANCES (MAIN, SIDE, OVERHEAD)
---	EASEMENT	WATER COVER TABLE POINT
---	HEAVY DUTY ASPHALT	CROSSING CONFLICT TABLE
---	CONCRETE SIDEWALK	LOCATION
---	PAVING STONE	ROOF DOWNSPOUT LOCATION
---	STORM MANHOLE	
---	CATCHBASIN OR DITCH INLET	
---	LANDSCAPE CATCHBASIN	
---	SANITARY MANHOLE	
---	PERFORATED PIPE IN SWALES	
---	WATER VALE/CHAMBER	
---	FIRE HYDRANT	
---	CENTRELINE OF SWALE	
---	SLOPING AT 1:1 (UNLESS SPECIFIED)	
---	PROPOSED ELEVATION	
---	EXISTING ELEVATION	
---	SWALE ELEVATION	
---	TOP OF WALL ELEVATION	
---	BOTTOM OF WALL ELEVATION	
---	EMERGENCY OVERLAND FLOW ROUTE	

FOR REVIEW ONLY
NOT FOR CONSTRUCTION

3	REVISED AS PER COMMENTS	JULY 8, 2019
2	REVISED AS PER COMMENTS	MAR. 14, 2019
1	ISSUED FOR SITE PLAN CONTROL	NOV. 30, 2018

No.	Revisions	Date
Check and verify all dimensions before proceeding with the work		
Do not scale drawings		

SCALE 1 : 500

0 10 20 30 40 50 Metres

McINTOSH PERRY
115 Walgreen Road, RR3, Carp, ON K0A 1L0
Tel: 613-836-2184 Fax: 613-836-3742
www.mcintoshperry.com

Client: **BBS CONSTRUCTION LTD.**
1805 WOODWARD DRIVE
OTTAWA, ON K2C 0P9

Project: **CARP ROAD BODY SHOP**
2113 & 2125 CARP ROAD

Drawing Title: **SITE SERVICING PLAN**

Scale: 1:500	Project Number: CP-17-0603
Drawn By: C.D.H.	
Checked By: R.P.K.	
Designed By: C.D.H.	

C102