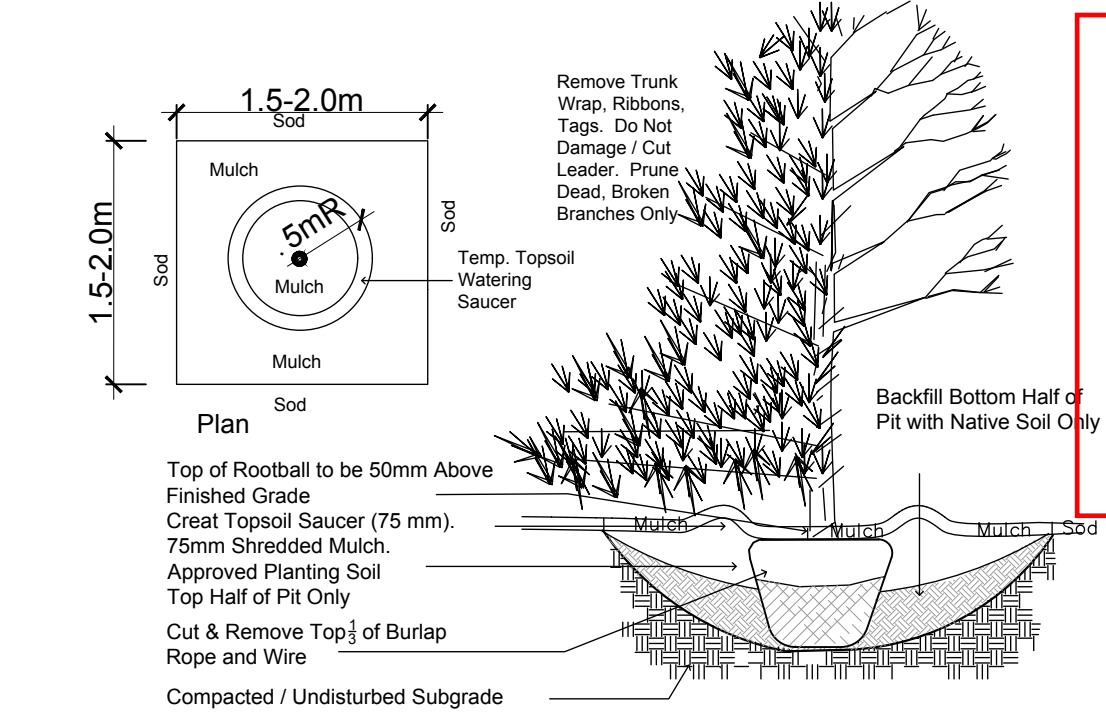
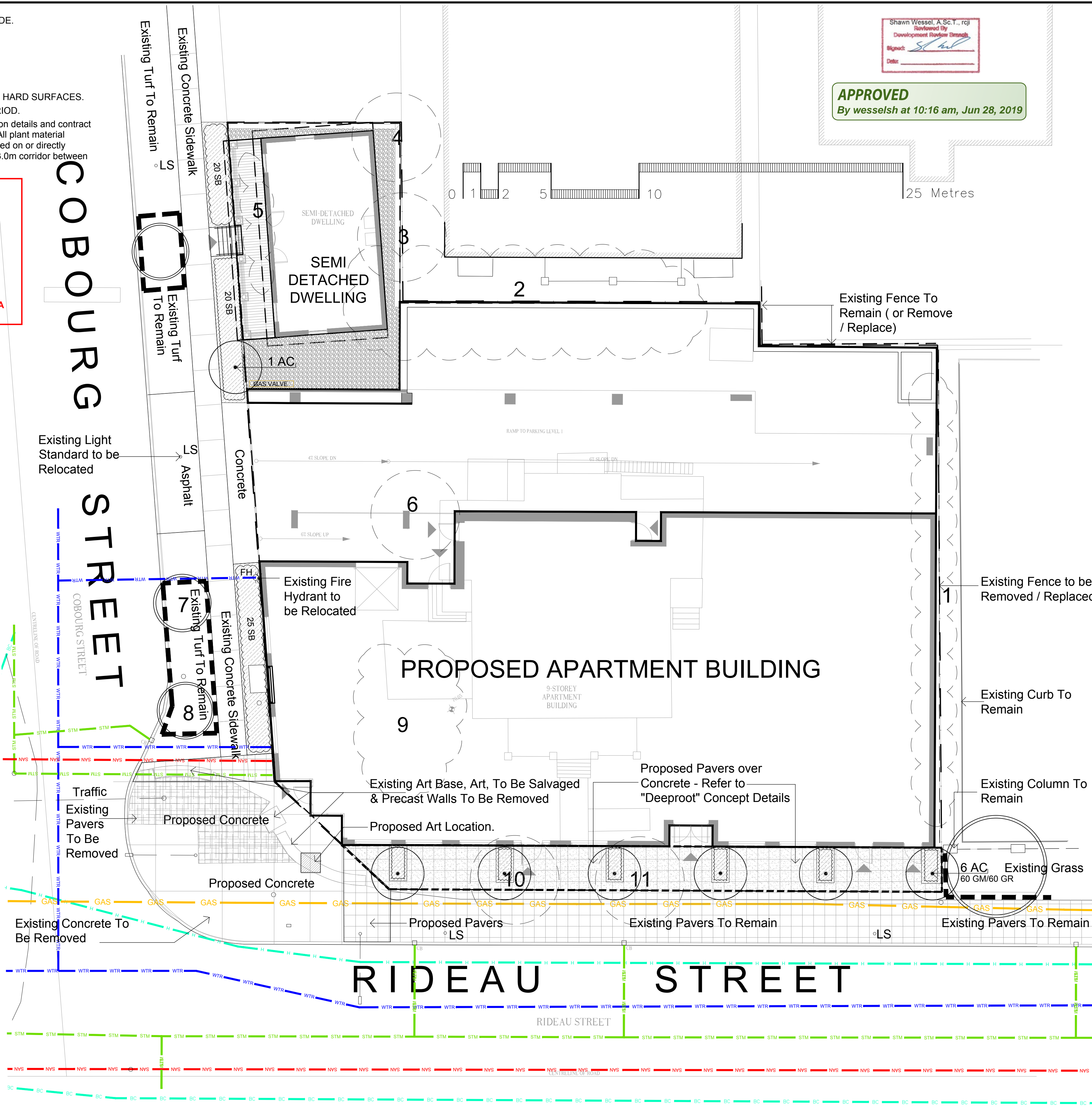
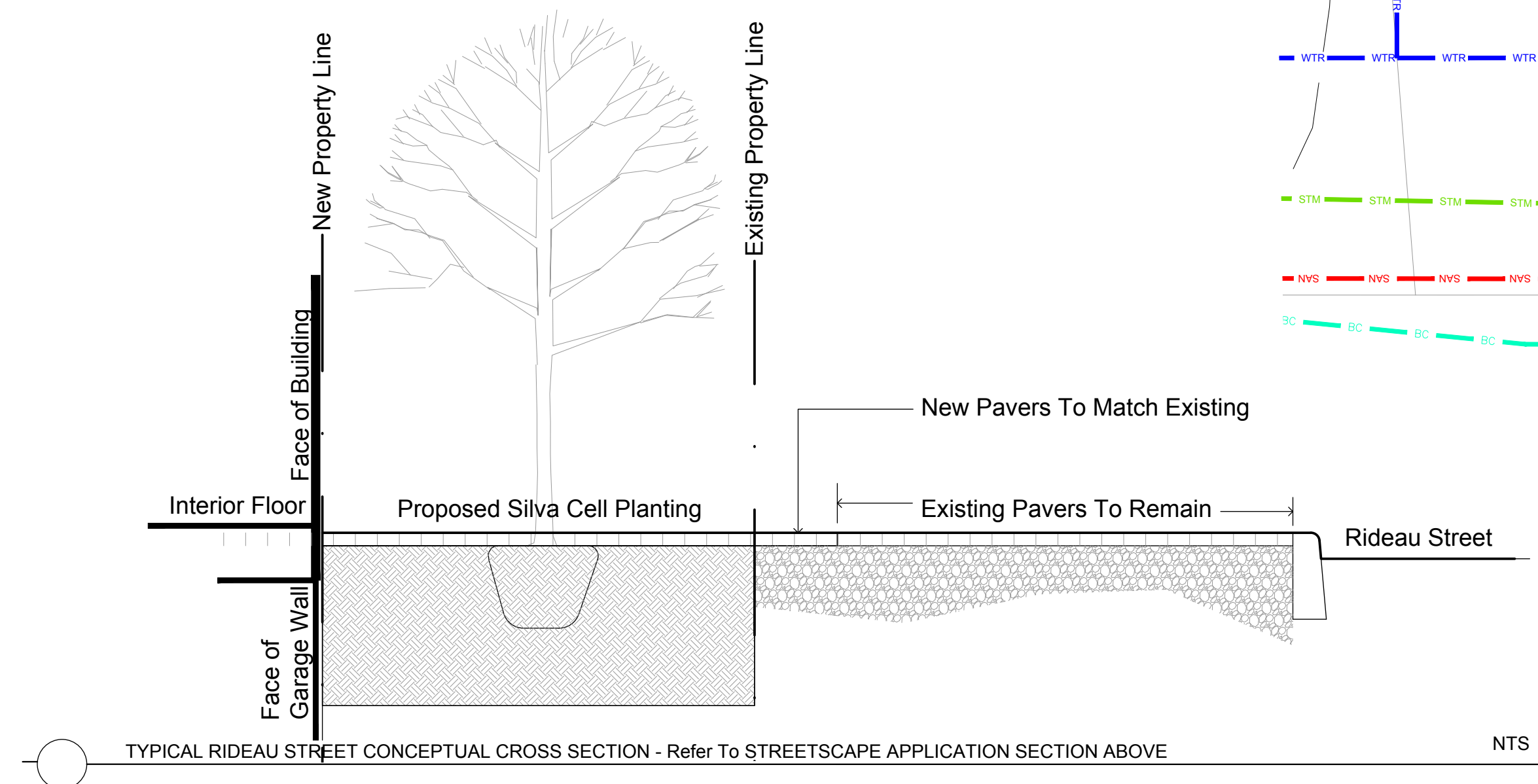
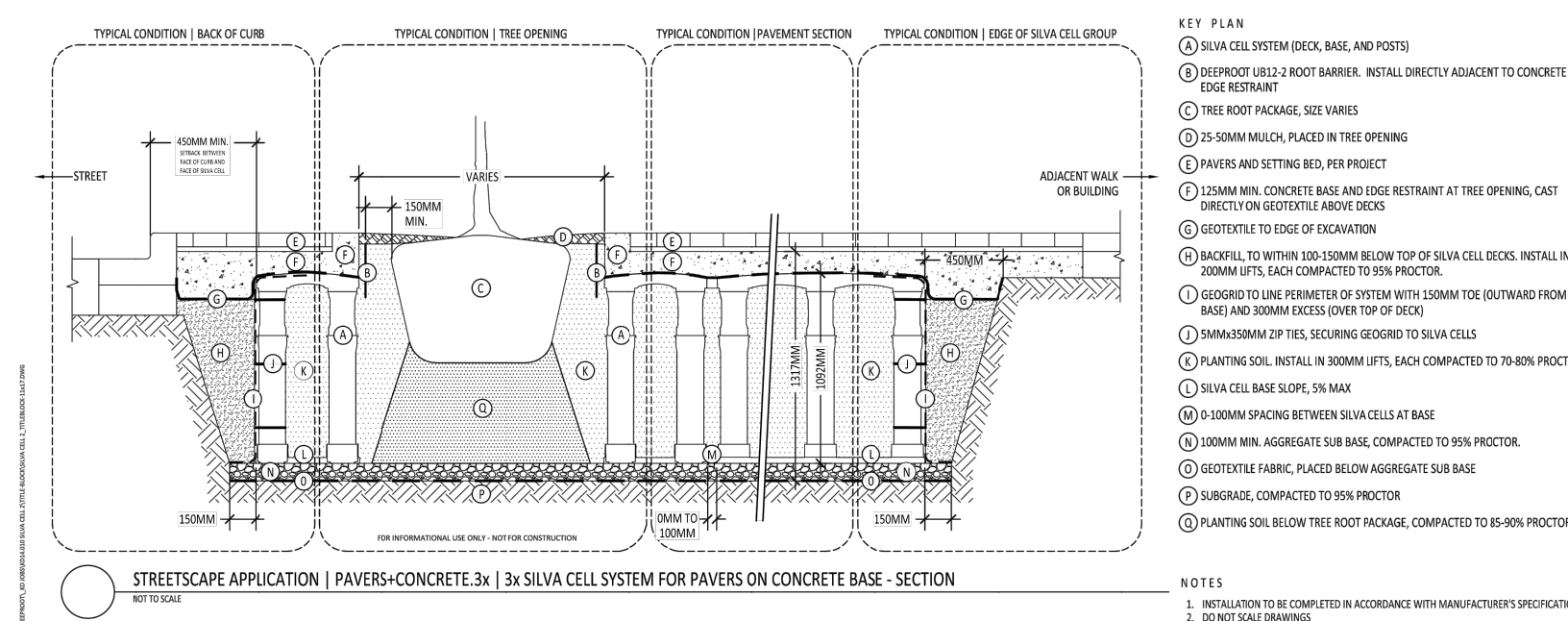
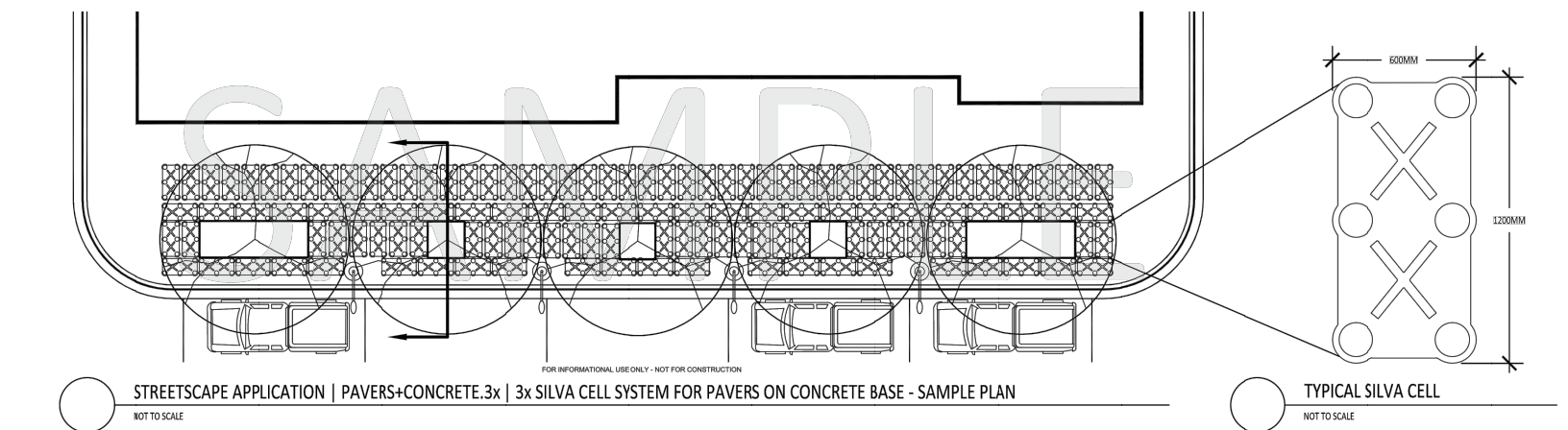
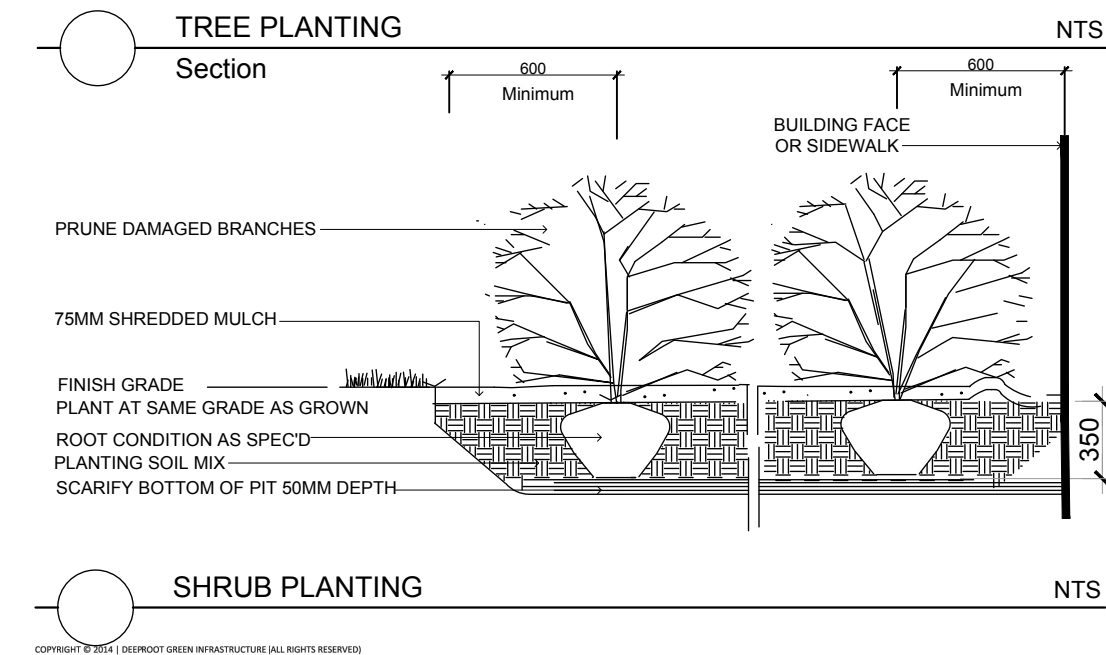


EXISTING TURF TO REMAIN - IF DISTURBED - REINSTATE WITH BE SOD C/W 150MM DEPTH TOPSOIL ON APPROVED SUBGRADE.
SOD TO BE NUMBER ONE GRADE TURFGRASS NURSERY SOD per NSGA - Fine Fescue/Kentucky Bluegrass Sod.
PLANTING MIX TO BE APPROVED BY LANDSCAPE ARCHITECT.
ALL PLANT MATERIAL TO MEET CNLA STANDARDS, AND BE APPROVED BY LANDSCAPE ARCHITECT PRIOR TO PLANTING.
REFER TO CIVIL ENGINEER'S DRAWING FOR ELEVATIONS / GRADING.
ALL WORK TO INCLUDE 1 YEAR WARRANTY FROM DATE OF FINAL ACCEPTANCE.
MAINTAIN ALL AREAS UNTIL FINAL ACCEPTANCE, INCLUDING MOWING OF TURF, WEEDING OF BEDS, WATERING, SWEEPING HARD SURFACES.
PROVIDE WATERING OF ALL PLANT MATERIAL AS REQUIRED FOR PROPER ESTABLISHMENT, UNTIL END OF WARRANTY PERIOD.
The Landscape Plan is to be read in conjunction with the grading and survey plan, underground services engineering drawings, construction details and contract documents and cannot be used for construction until signed by the landscape architect. Bare root material to be planted in season only. All plant material locations to be staked on site by the landscape contractor and checked by the landscape architect prior to planting. All trees to be preserved on or directly adjacent to the site will be protected. Plant material are to be installed a minimum of; 3.0m away from any part of any hydro transformer, 3.0m corridor between a fire hydrant and the curb, a 2.5m radius beside or behind a fire hydrant, 2.0m from any servicing/utility line or structure.



DOUGLAS JAMES, MCIP, RPP
MANAGER, DEVELOPMENT REVIEW - CENTRAL PLANNING, INFRASTRUCTURE & ECONOMIC DEVELOPEMENT DEPARTMENT, CITY OF OTTAWA

APPROVED
By Jamesdo at 11:07 am, Jun 26, 2019



Plant List - Trees -541 Rideau Street				
Code	Qty.	Botanical Name	Common Name	Size
AC	6	Amelanchier canadensis	Serviceberry	60mm cal
Code	Qty.	Botanical Name	Common Name	Size
SB	65	Spiraea bumalda 'Dart's Red'	Dart's Red Spirea	50cm Ht.
Code	Qty.	Botanical Name	Common Name	Condition
GM	60	Geranium macrorrhizum	Bigroot Geranium	9cm Pot
GR	60	Geranium psilostemon 'Gerwat'	Rozanne Geranium	9cm Pot

Drawing Remains the Property of Gino J. Aiello Landscape Architect. Copyright Reserved by Gino J. Aiello Landscape Architect. Do Not Use or Reproduce Without Approval of Gino J. Aiello. Do Not Use For Construction Unless Signed By Landscape Architect. Contractor is Responsible for Verification of Site Locations of all Utilities. Report any Discrepancies Between Site and Drawing Immediately to Gino J. Aiello.

TCR - REFER TO TCR BY IFS

- Existing Tree to Remain
- Existing Tree to be Removed
- Protection for Existing Trees
- Proposed Deciduous Tree
- Proposed Planting Bed
- Proposed Riverstone
- Proposed Pavers

BURIED SERVICES

- WATER
- STORM
- SANITARY
- NATURAL GAS
- BELL / CABLE
- HYDRO

No	Revision	Date
6	FOR SPC SUBMISSION 4	MARCH 27 '2019
5	FOR SPC SUBMISSION 3	JANUARY 9 2019
4	Updated Site Plan	JULY 5 2018
3	Updated Site Plan/City Comments	MAY 29 2018
2	For Site Plan Control	December 8 2017
1	For Coordination	November 28 2017

Property Owner
10311197 Canada Inc.
c/o Chenier Development Corp.
14 Third Street East Cornwall, Ontario K6H 2C7

Consultant
Gino J. Aiello landscape architect
www.gjala.com
gino@gjala.com (613) 852 1343

Project
New Multi Unit Residential / Mixed Use Building
541 Rideau Street

Drawing
Landscape Plan

Drawn By: **GJA**
Design By: **GJA**
Date: **November 2017**
Scale: **1:125**

Sheet Number
L1

Dwg # 17746

D07-12-17-0166