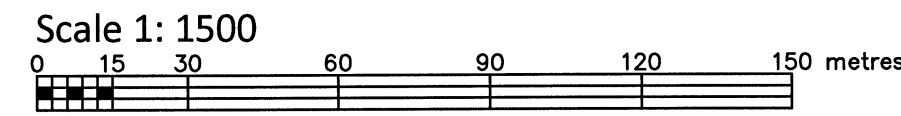


PLAN OF SURVEY OF

PART OF LOT 11
CONCESSION 2
GEOGRAPHIC TOWNSHIP OF HUNTLEY
CITY OF OTTAWA

FARLEY, SMITH & DENIS SURVEYING LTD. 2018



Metric Note

Distances and coordinates on this plan are in metres and can be converted to feet by dividing by 0.3048.

Distance Note

Distances shown on this plan are ground distances and can be converted to grid distances by multiplying by the combined scale factor of 0.99991.

Bearing Note

Bearings are MTM grid, derived from the Can-Net Real Time Network. GPS observations on reference points A and B, shown hereon, having a bearing of N46°13'30"E and are referred to the Central Meridian of MTM Zone 9 (76°30' West Longitude) Nad-83 (Original).

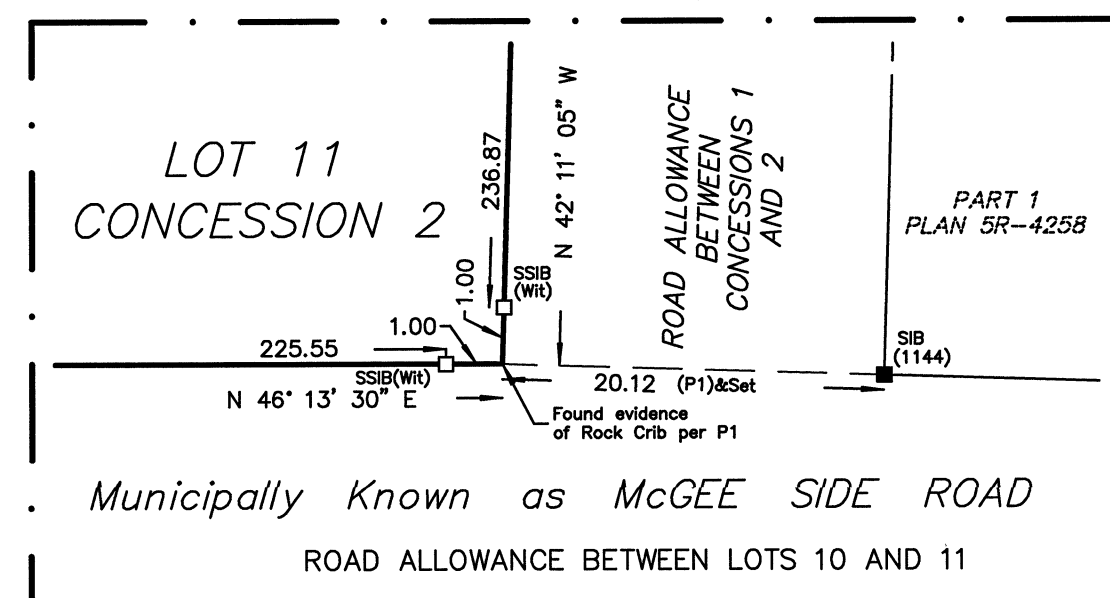
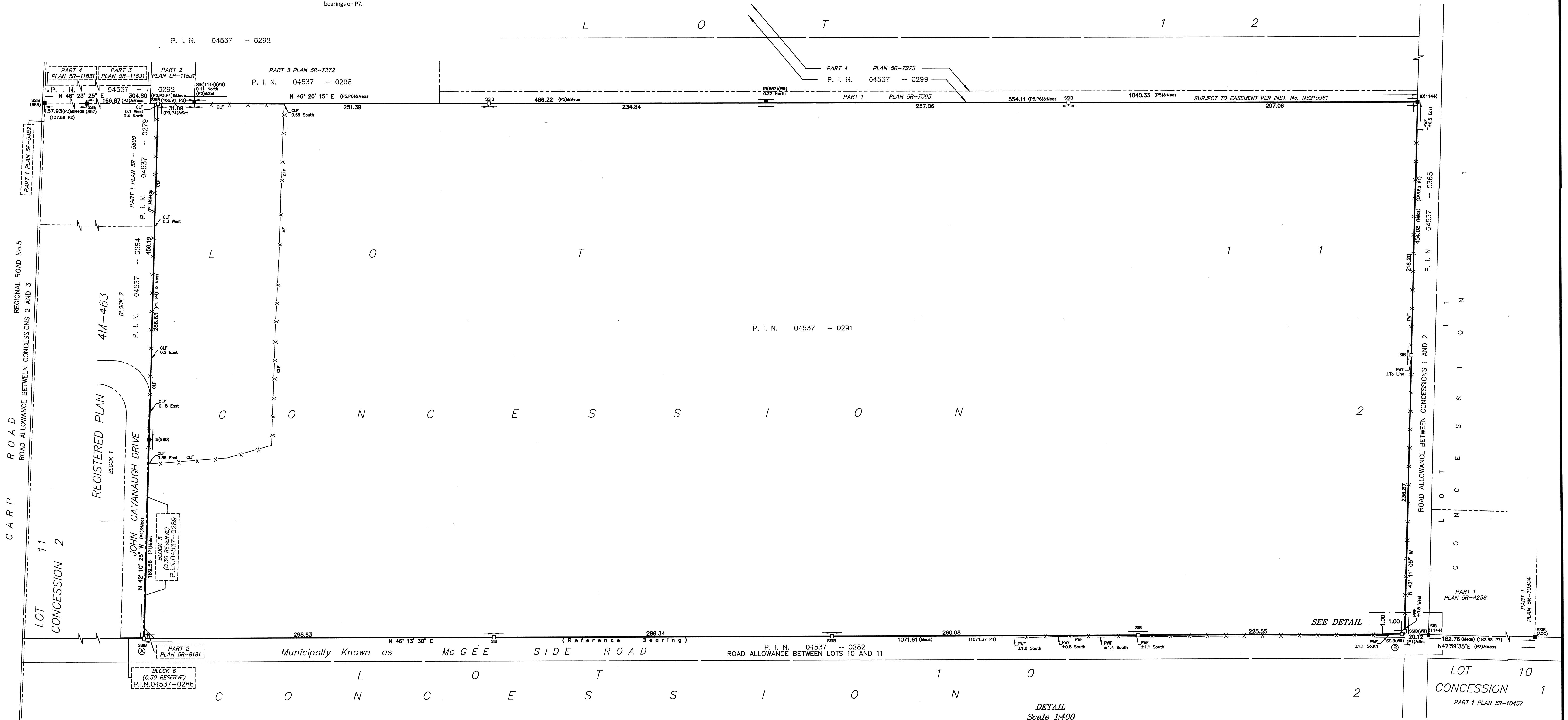
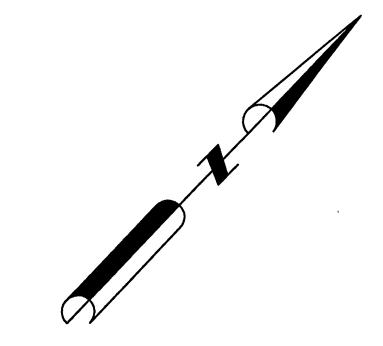
For bearing comparisons, a rotation of 0°01'05" clockwise was applied to bearings on P2.
For bearing comparisons, a rotation of 0°18'05" counter-clockwise was applied to bearings on P3 & P4.
For bearing comparisons, a rotation of 0°19'35" counter-clockwise was applied to bearings on P5 & P6.
For bearing comparisons, a rotation of 0°22'15" counter-clockwise was applied to bearings on P7.

Notes & Legend

- Denotes Survey Monument Planted
- " Survey Monument Found
- SIB Standard Iron Bar
- SSIB Short Standard Iron Bar
- IB Iron Bar
- (Wit) Witness
- Meas Measured
- (P1) Plan By (990) Dated April 19, 1968 (Attached to Inst. NS13296)
- (P2) Plan By (A06) Dated September 8, 2015 (File 16011-15)
- (P3) Plan SR - 11831
- (P4) Plan SR - 5800
- (P5) Plan SR - 7272
- (P6) Plan SR - 7363
- (P7) Plan SR - 10304
- CLF Chain Link Fence
- PWF Post and Wire Fence
- MF Metal Fence

CO-ORDINATES WERE DERIVED FROM SMART-NET REAL TIME NETWORK OBSERVATIONS, MTM ZONE 9, N.A.D. 1983 (ORIGINAL).		
POINT ID	NORTHING	EASTING
①	5019647.97	344400.60
②	5020388.58	345173.59
01919680037	5023507.89	351533.87
01919791051	5032569.51	343633.72

CO-ORDINATES ARE MTM ZONE 9, N.A.D. 1983 (ORIGINAL), TO URBAN ACCURACY PER SEC. 14 (2) OF O.REG. 216/10, AND CANNOT, IN THEMSELVES, BE USED TO RE-ESTABLISH CORNERS OR BOUNDARIES SHOWN ON THIS PLAN.



ASSOCIATION OF ONTARIO
LAND SURVEYORS
PLAN SUBMISSION FORM
2062453

THIS PLAN IS NOT VALID UNLESS
IT IS AN EMBOSSED ORIGINAL COPY
ISSUED BY THE SURVEYOR
In accordance with
Regulation 1026, Section 29 (3).

Surveyor's Certificate
I certify that:
1. This survey and plan are correct and in accordance with the Surveys Act, the Surveyors Act and the Regulations made under them.
2. The survey was completed on the 2nd day of October, 2018.

Date: Oct. 17/18
Daniel Robinson
Ontario Land Surveyor

FARLEY, SMITH & DENIS SURVEYING LTD.

WARNING: NO PERSON MAY COPY, REPRODUCE, DISTRIBUTE OR ALTER THIS PLAN IN WHOLE OR IN PART WITHOUT THE WRITTEN PERMISSION OF FARLEY, SMITH & DENIS SURVEYING LTD. © FARLEY, SMITH & DENIS SURVEYING LTD., 2018.

FILE No.: 437-18

ONTARIO LAND SURVEYORS
CANADA LAND SURVEYORS
190 COLONNADE ROAD, OTTAWA, ONTARIO K2E 7J5
TEL. (613) 727-8226 FAX. (613) 727-1826