

LOCATION PLAN

SITE INFORMATION

LEGAL DESCRIPTION: PART OF LOT 11 CONFESSION 2 GEOGRAPHIC TOWNSHIP OF HUNTERVILLE CITY OF OTTAWA R15(19c) AND R04(120c)

ZONING: Required (R15) Provided

LOT AREA (min.) 10,000 sq. m. 487,421.7 sq. m.

LOT WIDTH (min.) 75 m. 1,064.1 m.

SETBACKS:

|                |         |             |
|----------------|---------|-------------|
| REAR           | 10.0 m  | 238.1 m     |
| CORNER SIDE YD | 4.0 m   | 440.4/544.6 |
| FRONT YARD     | 4.0 m   | 252.6 m     |
| MAX. BLDG. HT. | 12.0 m  | 3.3 m       |
| LOT COVERAGE   | 30% Max | 0.2%        |
| LANDSCAPE AREA | 20% Min | 96.0%       |

GROSS FLOOR AREA (PER ZONING BY-LAW)

|              |               |
|--------------|---------------|
| BASEMENT     | 41.53 sq. m.  |
| GROUND FLOOR | 660.86 sq. m. |
| TOTAL        | 702.39 sq. m. |

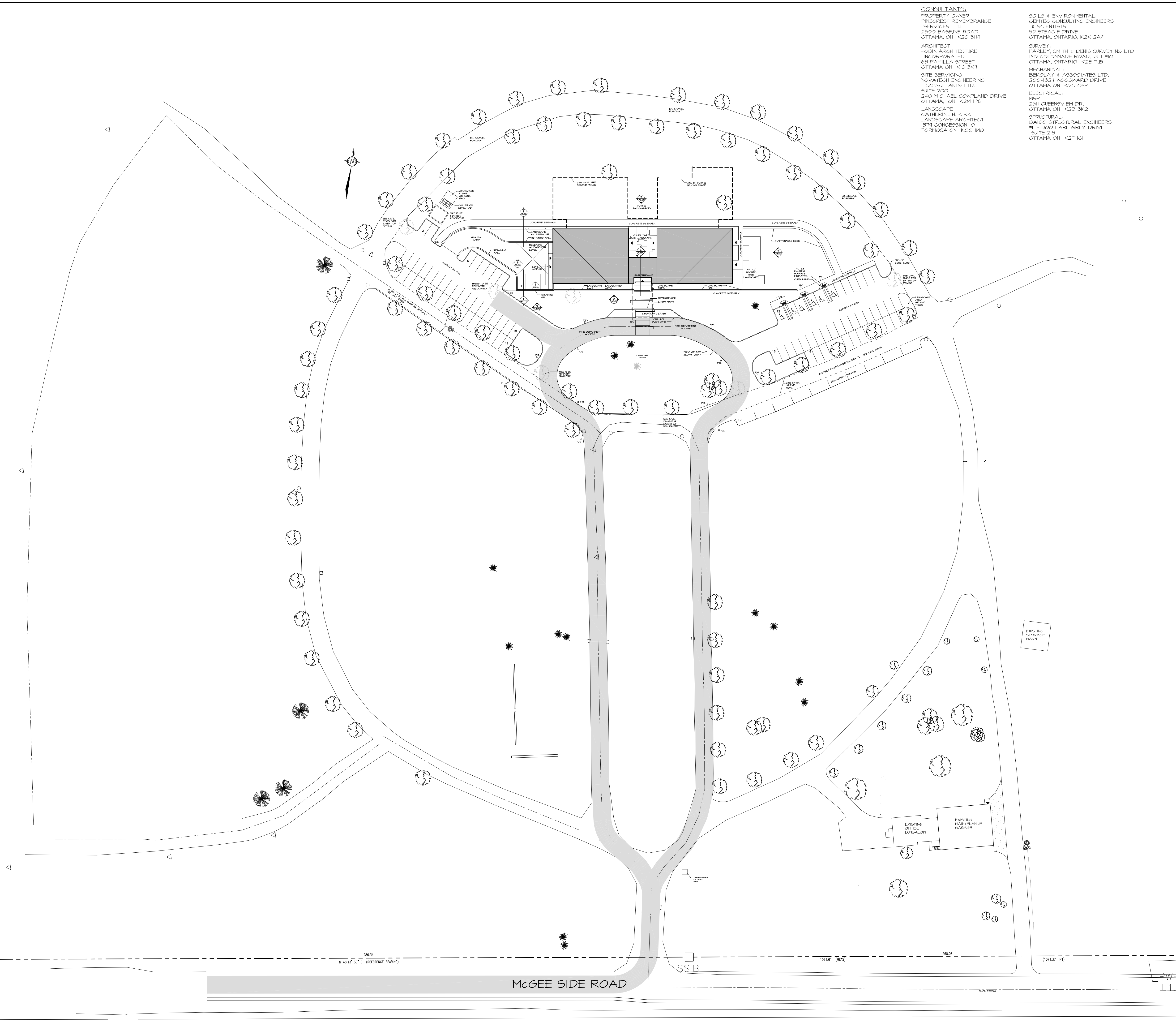
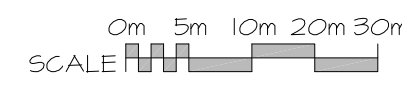
PARKING REQUIRED: 7 spaces/100 sq. m. of GFA  
TOTAL (7 X 102/100) 48 SPACES  
PARKING PROVIDED 84 SPACES

LOADING SPACES REQUIRED:  
0 - Phase One (Less than 1000 sq. m.)  
1 - Phase Two (1000-1499 sq. m.)

LOADING SPACES PROVIDED:  
1 - To serve Phase One and Phase Two

BICYCLE SPACES REQUIRED:  
1/500 sq. m. GFA 0 SPACES  
(Site is outside Village of Carp)

DEVELOPMENT AREA:  
BUILDING FOOTPRINT 1014.40 sq. m.  
PARKING FOOTPRINT 3183.35 sq. m.  
TOTAL 4,212.75 sq. m.



CONSULTANTS:

PROPERTY OWNER:  
PINECREST REMEMBRANCE SERVICES LTD.  
2500 BASELINE ROAD  
OTTAWA, ON K2C 3H1

ARCHITECT:  
HOBIN ARCHITECTURE INCORPORATED  
63 PAMILLA STREET  
OTTAWA ON K1S 3K1

SITE SERVING:  
NOVATECH ENGINEERING CONSULTANTS LTD.  
SUITE 200  
240 MICHAEL CONFLAND DRIVE  
OTTAWA, ON K2H 1P9

LANDSCAPE ARCHITECT:  
CATHERINE H. KIRK  
LANDSCAPE ARCHITECT  
1574 CONCESSION 10  
FORMOSA ON K0G 1N0

SOILS & ENVIRONMENTAL:  
GENTEC CONSULTING ENGINEERS & SCIENTISTS  
32 STEADIE DRIVE  
OTTAWA, ONTARIO, K2K 2A4

SURVEY:  
FARLEY, SMITH & DENIS SURVEYING LTD  
140 COLONADE ROAD, UNIT #10  
OTTAWA, ONTARIO K2E 7J5

MECHANICAL:  
BEKOLAY & ASSOCIATES LTD.  
200-1827 WOODWARD DRIVE  
OTTAWA ON K2G 0H9

ELECTRICAL:  
KSP  
2811 QUEENSWAY DR.  
OTTAWA ON K2B 8K2

STRUCTURAL:  
DAIDO STRUCTURAL ENGINEERS  
#1 - 300 EARL GREY DRIVE  
SUITE 215  
OTTAWA ON K2T 1G1



|     |            |                            |
|-----|------------|----------------------------|
| 3   | JUNE 17/19 | ISSUED - SITE PLAN CONTROL |
| 2   | MAY 1/19   | ISSUED FOR INFORMATION     |
| 1   | AUG. 31/18 | ISSUED FOR COSTING         |
| no. | date       | revision                   |

It is the responsibility of the appropriate contractor to check and verify all dimensions on site and report all errors and/or omissions to the architect.

All contractors must comply with all pertinent codes and by-laws.

Do not scale drawings.

This drawing may not be used for construction until signed.

Copyright reserved.



**Hobin Architecture Incorporated**  
63 Pamilla Street  
Ottawa, Ontario  
Canada K1S 3K7  
T: 613-238-7200  
F: 613-235-2005  
E: mail@hobinarc.com  
hobinarc.com

PROJECT/LOCATION:  
**HIGHLAND PARK REMEMBRANCE**  
2037 McGEE SIDE RD

DRAWING TITLE:  
**SITE CONTEXT PLAN**

|                  |                   |                 |
|------------------|-------------------|-----------------|
| DRAWN BY:<br>BB  | DATE:<br>17/12/07 | SCALE:<br>1:600 |
| PROJECT:<br>1513 | DRAWING NO.:      | <b>A1.01</b>    |
| REVISION NO.:    |                   |                 |