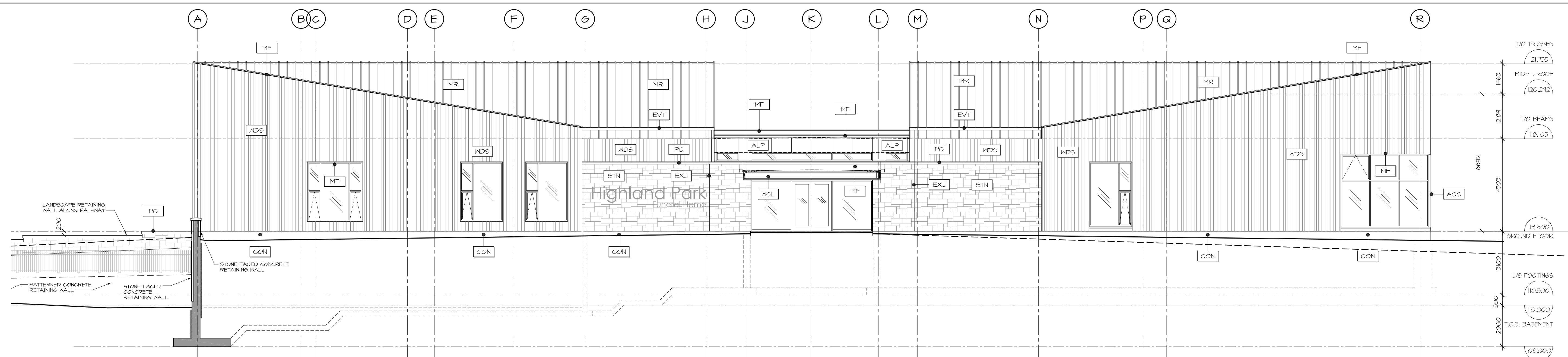
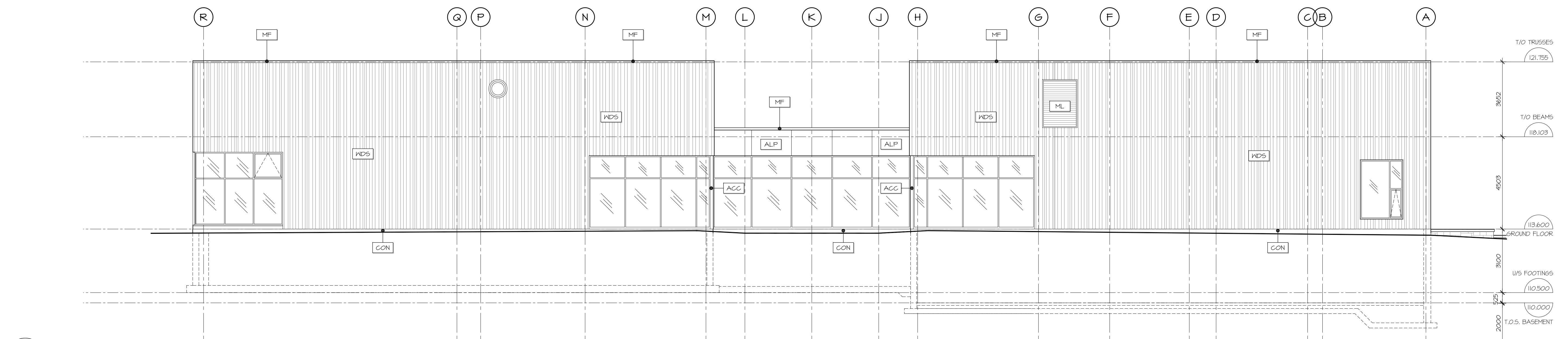


MATERIALS LEGEND:

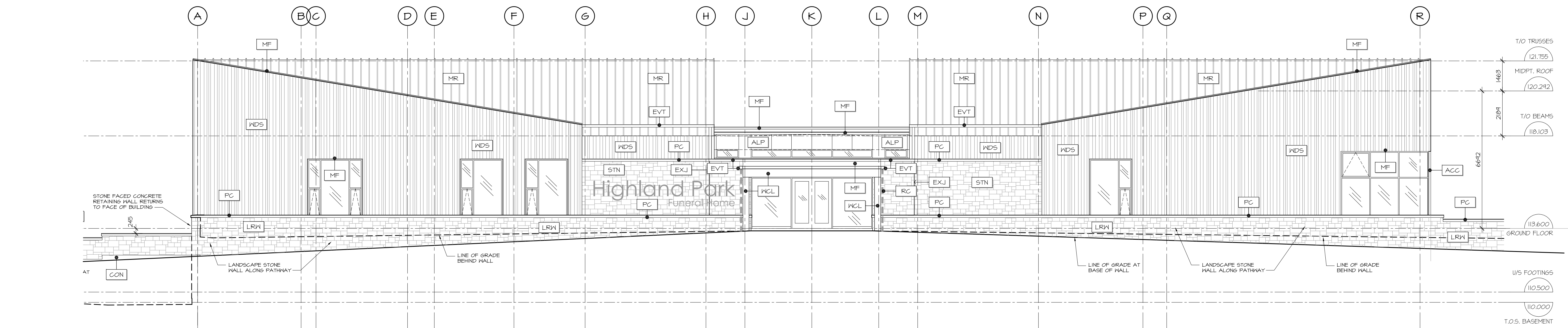
- ACC ALUMINUM CORNER CLOSURE
- ALP ALUMINUM PANEL
- ASF ALUMINUM SILL FLASHING
- SEE WINDOW SCHEDULE
- CON EXPOSED CONCRETE
- CJ CONTROL JOINT
- EVT EAVESTROUGH
- EXJ EXPANSION JOINT
- FDC FIRE DEPARTMENT CONNECTION
- LF LIGHT FIXTURE, REFER TO ELEC.
- LRW LANDSCAPE RETAINING WALL
- ML MECHANICAL LOUVER
- MR PREFINISHED METAL FLASHING
- PC# PRECAST CONCRETE, TYPE AS INDICATED
- RC RAIN CHAIN
- SG SPANDREL GLASS
- STN STONE VENEER
- WDS WOOD SIDING
- WCL WOOD CLADDING
- W# WINDOW NUMBER, REFER TO WINDOW SCHEDULE
- CW# CURTAIN WALL NUMBER, REFER TO WINDOW SCHEDULE
- TONED GLAZING INDICATES SPANDREL GLASS; REFER TO WINDOW SCHEDULE
- 000.D DOOR NUMBER, REFER TO DOOR SCHEDULE



1 SOUTH ELEVATION (At Landscape Strip)
A3.01 SCALE 1:100



2 NORTH ELEVATION
A3.01 SCALE 1:100



3 SOUTH ELEVATION (Along Walkway)
A3.01 SCALE 1:100

no.	date	revision
4	JUNE 17/19	ISSUED - SITE PLAN CONTROL
3	MAY 1/19	ISSUED FOR INFORMATION
2	JAN. 8/19	ISSUED FOR INFORMATION
1	AUG. 31/18	ISSUED FOR COSTING

It is the responsibility of the appropriate contractor to check and verify all dimensions on site and report all errors and/or omissions to the architect.

All contractors must comply with all pertinent codes and by-laws.

Do not scale drawings.

This drawing may not be used for construction until signed.

Copyright reserved.



Hobin Architecture Incorporated
63 Parnilla Street
Ottawa, Ontario
Canada K1S 3K7
T: 613-238-7200
F: 613-235-2005
E: mail@hobinarc.com
hobinarc.com

HOBIN ARCHITECTURE

PROJECT/LOCATION:
HIGHLAND PARK REMEMBRANCE
2037 MCGEE SIDE ROAD

DRAWING TITLE:
BUILDING ELEVATIONS

DRAWN BY: BB	DATE: 18/03/05	SCALE: 1:100
PROJECT: 1513		DRAWING NO.:
		A3.01
		REVISION NO.: