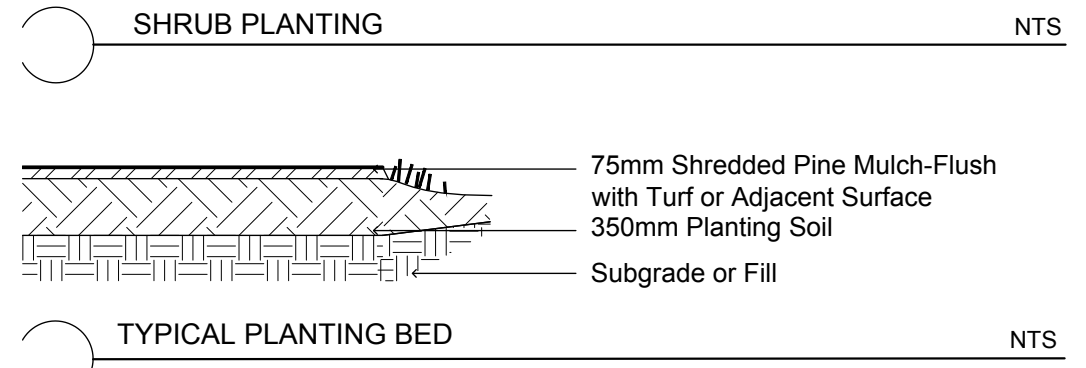
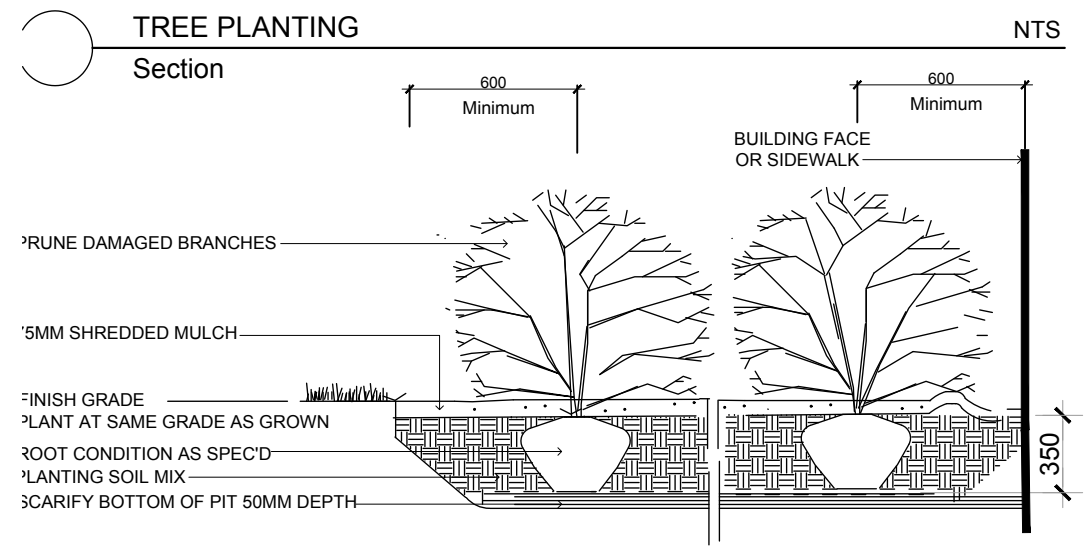
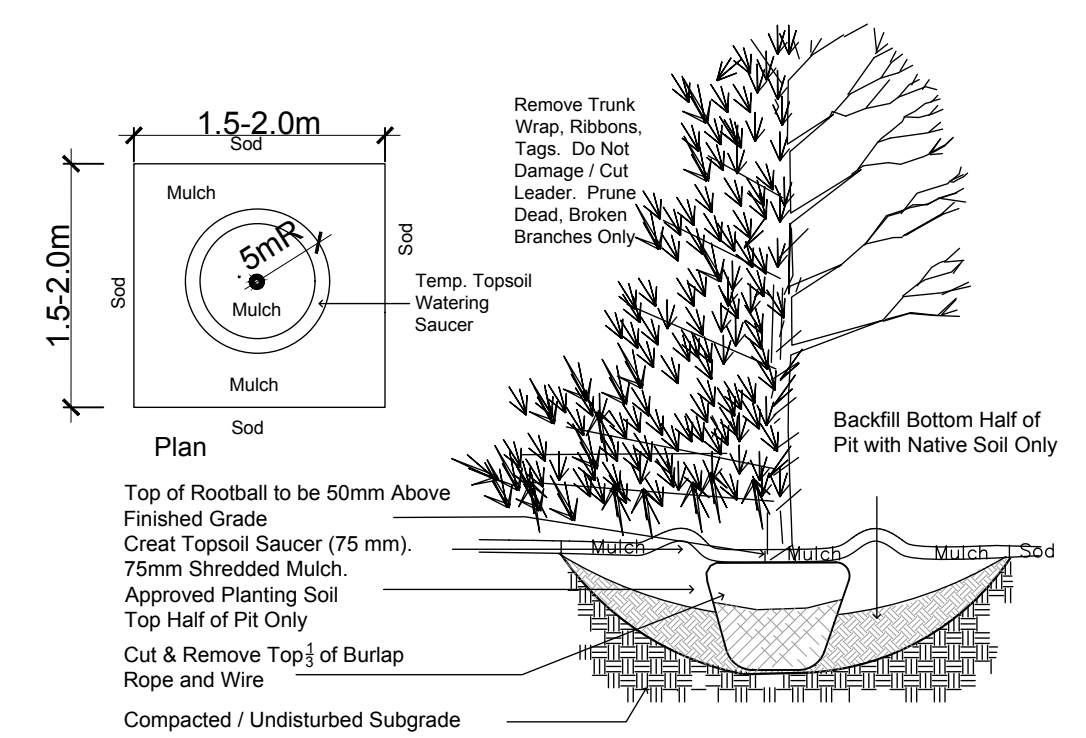


Plant List - Trees - 3735 ST. JOSEPH BOULEVARD ORLEANS					
Code	Qty.	Botanical Name	Common Name	Size	Condition
AC	4	Amelanchier canadensis	Servicberry	60mm cal	B + B specimen
AR	1	Acer rubrum	Red Maple	60mm cal	B + B specimen
CR	2	Cornus racemosa	Grey Dogwood	60mm cal	B + B specimen
CC	1	Crataegus crus-galli 'Inermis'	Thornless Cockspur Hawthorn	60mm cal	B + B specimen
PG	1	Picea glauca	White Spruce	1.5m Ht.	B + B specimen

Plant List - Shrubs - 3735 ST. JOSEPH BOULEVARD ORLEANS					
Code	Qty.	Botanical Name	Common Name	Size	Condition
HK	150	Hypericum kalmianum	St. John's Wort	40cm Ht.	Pot
SA	80	Spiraea alba	Meadowsweet	60cm Ht.	Pot



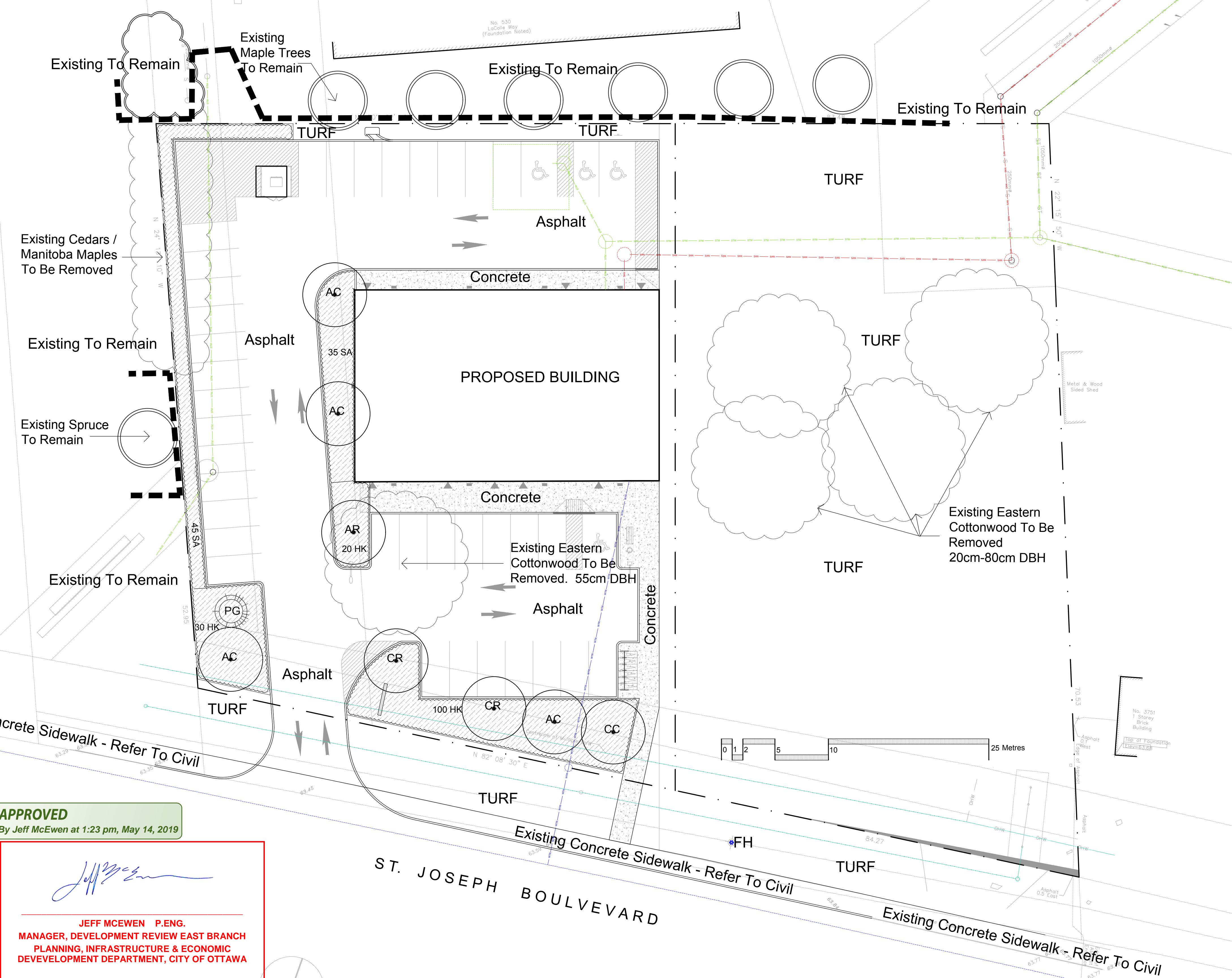
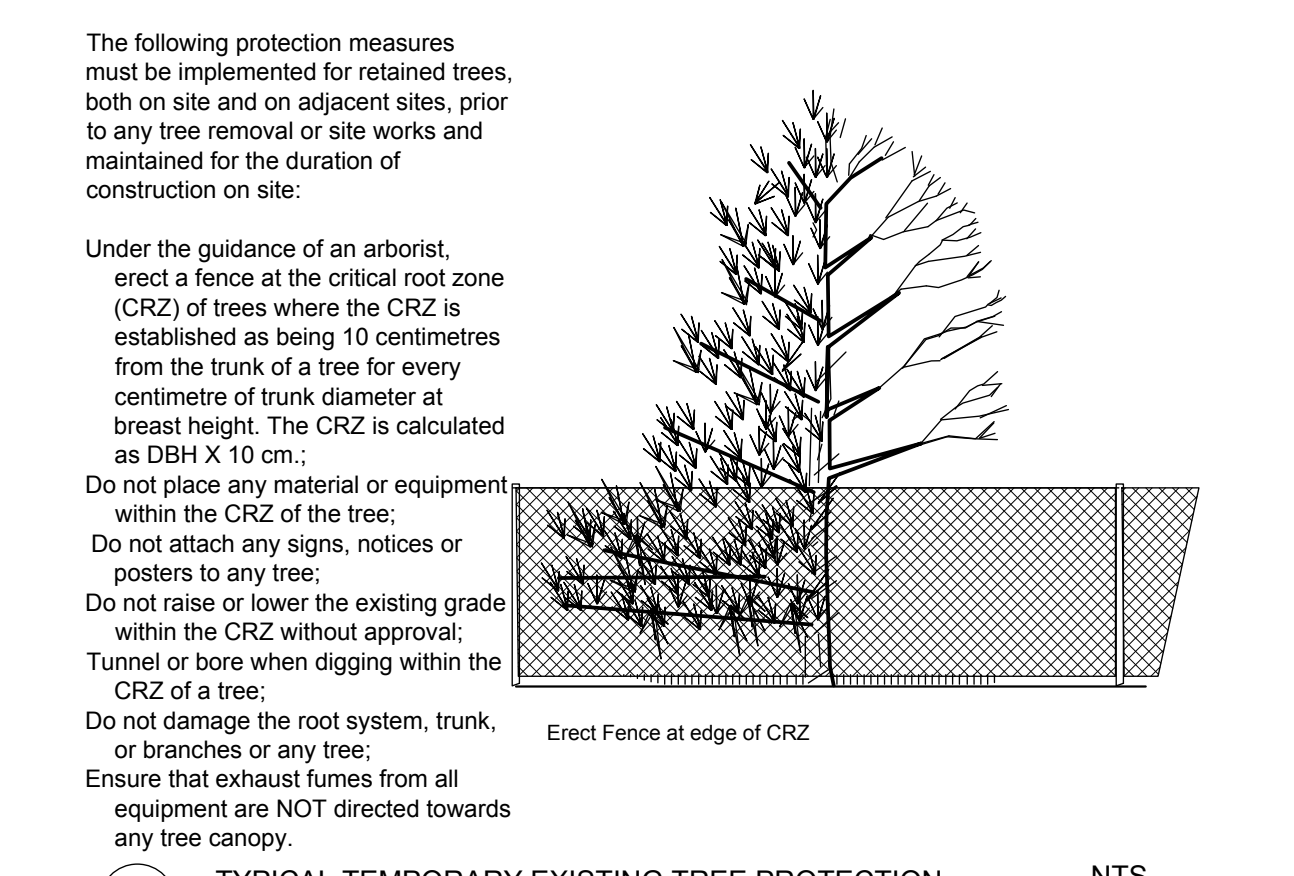
During Excavation/Bed Preparation if Extreme Conditions are Encountered (Water, Rock, Gravel...) that Could Effect the Planting, Notify GJALA Immediately.

EXISTING VEGETATION / TCR SCHEDULE

TREES TO REMAIN AND BE PROTECTED
 SPRUCE - OFF SITE TO WEST
 ROW OF MAPLE TREES - OFF SITE TO NORTH

TREES TO BE REMOVED.
 CEDAR HEDGE MIXED WITH MANITOBA MAPLES - STRADDLING WEST LOT LINE.
 COTTONWOOD 20 - 55CM DHB.

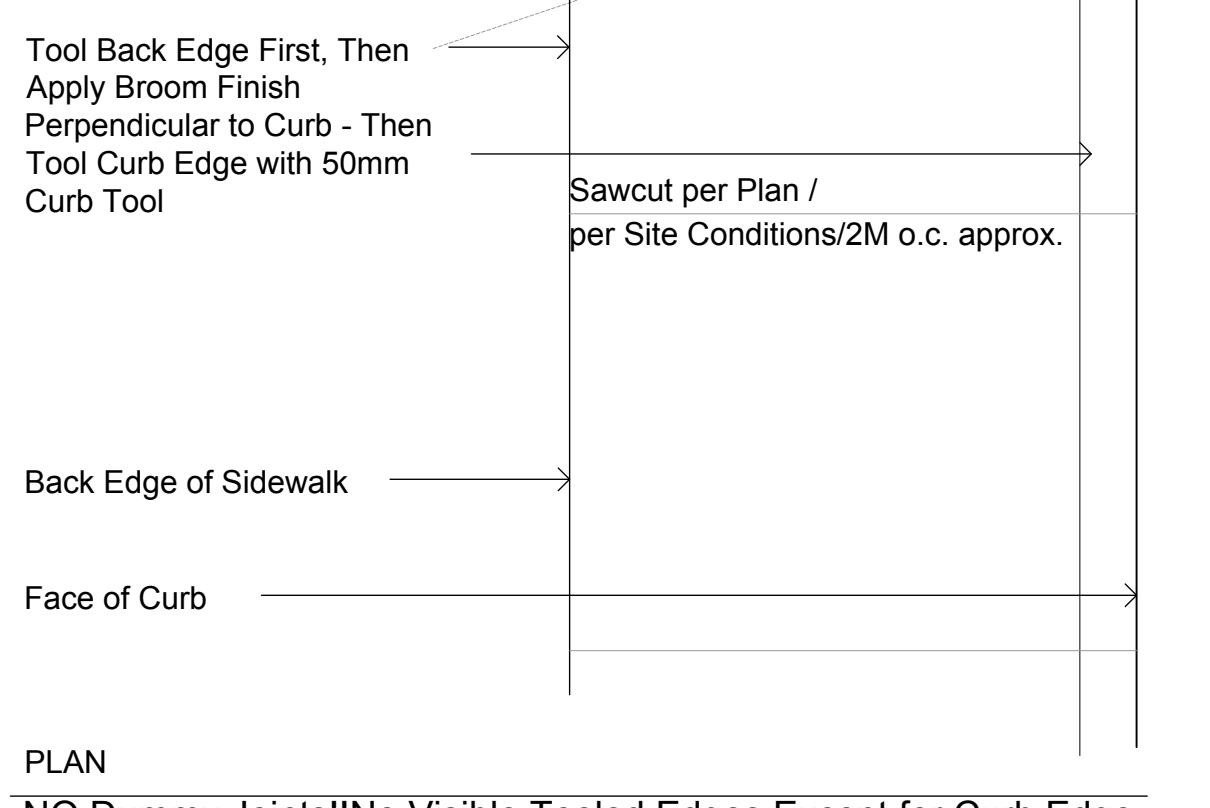
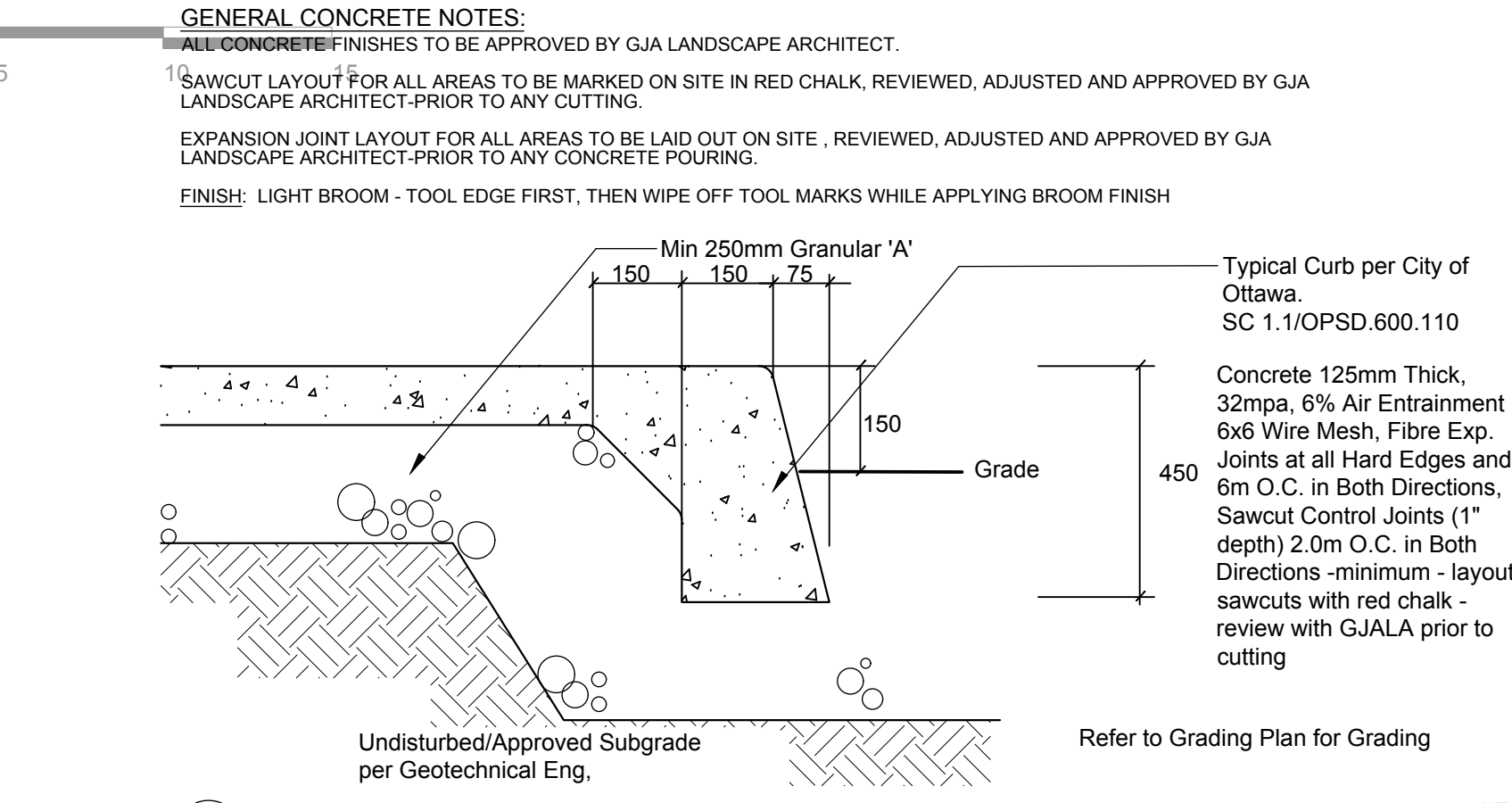
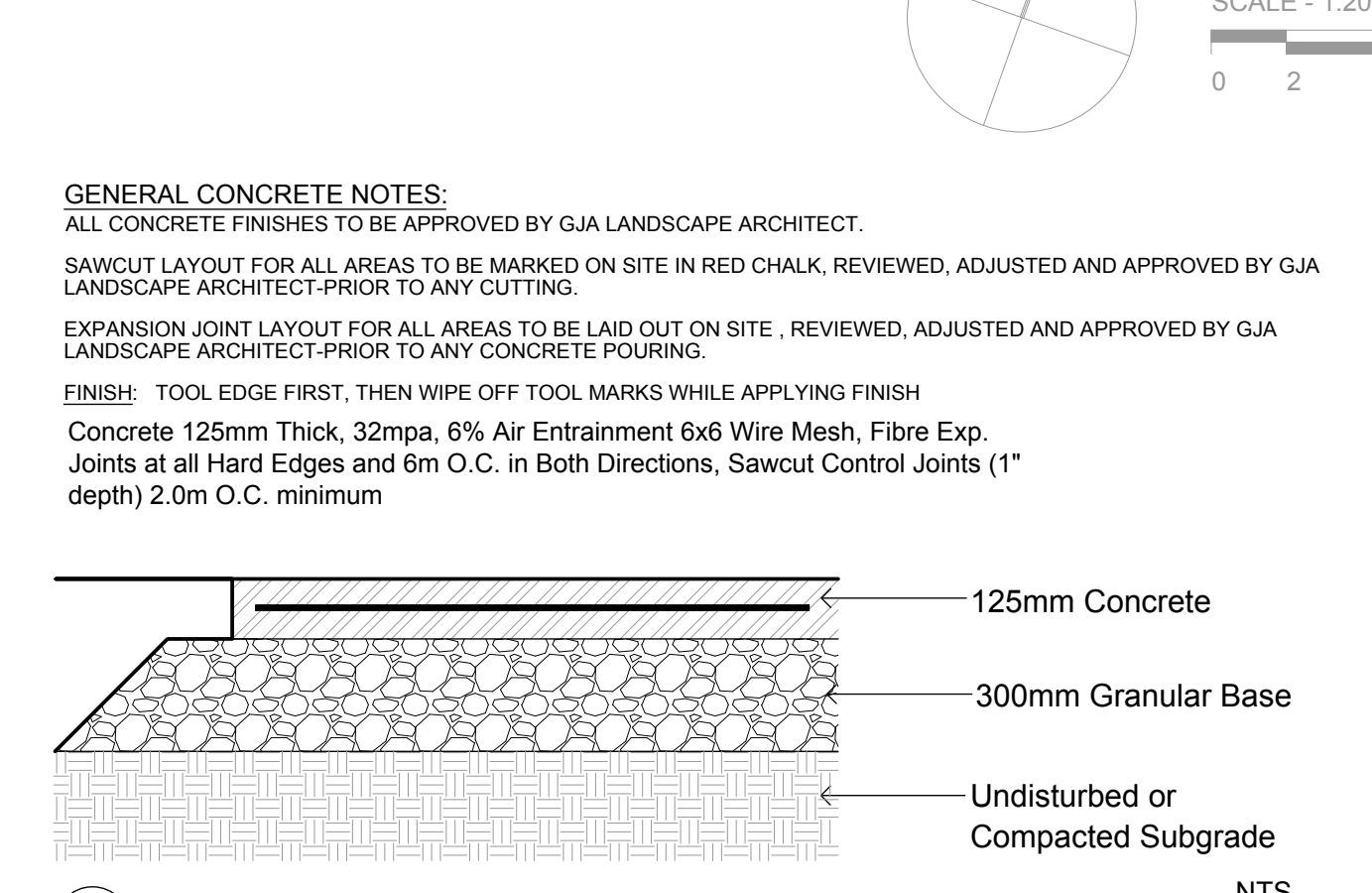
"No clearing of vegetation between April 15-August 15, unless a qualified biologist has determined that no nesting is occurring within 5 days prior to the clearing"



APPROVED
 By Jeff McEwen at 1:23 pm, May 14, 2019

Jeff McEwen

JEFF MCEWEN P.ENG.
 MANAGER, DEVELOPMENT REVIEW EAST BRANCH
 PLANNING, INFRASTRUCTURE & ECONOMIC
 DEVELOPMENT DEPARTMENT, CITY OF OTTAWA



Drawing Remains the Property of/Copyright Reserved by Gino J. Aiello Landscape Architect. Do Not Use or Reproduce Without Approval of Gino J. Aiello.

NOT To Be Used For Construction Unless indicated by Revision: "FOR LANDSCAPE CONSTRUCTION".

Contractor is Responsible for Verification of Site Locations of all Utilities. Report any Discrepancies Between Site and Drawing Immediately to Gino J. Aiello. Do NOT Proceed Until Clarified.

TURF AREAS TO BE SOD C/W 150MM DEPTH TOPSOIL ON APPROVED SUBGRADE| SOD TO BE #1 GRADE TURFGRASS NURSERY SOD per NSGA - Fine Fescue/Kentucky Bluegrass Sod | PLANTING MIX TO BE APPROVED BY LANDSCAPE ARCHITECT| PLANT MATERIAL TO MEET CNLA STANDARDS/BE APPROVED BY LANDSCAPE ARCHITECT PRIOR TO PLANTING | ALL MATERIALS & WORK TO BE MAINTAINED UNTIL FINAL ACCEPTANCE, (MOWING TURF, WEEDING BEDS, WATERING TURF & PLANTS) & INCLUDE 1 YEAR WARRANTY FROM DATE OF FINAL ACCEPTANCE | PROVIDE WATERING OF ALL PLANT MATERIAL AS REQUIRED FOR PROPER ESTABLISHMENT, UNTIL END OF WARRANTY PERIOD | REFER TO CIVIL ENGINEER'S DRAWING FOR ELEVATIONS / GRADING|

The Landscape Plan is to be read in conjunction with the grading, servicing, site and survey plan | Bare root material to be planted in season only | All plant material locations to be staked on site by the landscape contractor and checked by the landscape architect prior to planting | All trees to be preserved on or directly adjacent to the site will be protected | Plant material are to be installed a minimum of; 3.0m away from any part of any hydro transformer, 3.0m corridor between a fire hydrant and the curb, a 2.5m radius beside or behind a fire hydrant, 2.0m from any servicing/utility line or structure |

- Existing Tree to Remain
- Existing Tree to be Removed
- Protection for Existing Trees
- Proposed Coniferous Tree
- Proposed Deciduous Tree
- Proposed Planting Bed

No.	Revision	Date
4	PER UPDATED SITE PLAN	APRIL 5 2019
3	FOR SPC SUBMISSION 2	January 23 2019
2	FOR SPC SUBMISSION 1	September 27 2018
1	FOR COORDINATION	AUGUST 2018

PROPERTY OWNER Blueprint Construction Services Ltd.
 17-1010 Polytek Street Ottawa K1J 9J1

Gino J. Aiello landscape architect www.GJALA.com
 Gino@GJALA.com (613) 852-1343
 110 Didsbury Road Unit #9 | Ottawa Ontario | K2T 0C2

Project Light Industrial Building
 3735 St. Joseph Blvd., Orleans

Drawing Landscape Plan

Date: August 2018 Sheet Number
 Scale: 1:200
 City of Ottawa
 Dwg - #####

L1

D07-12-18-0152