

EROSION AND SEDIMENT CONTROL PLAN

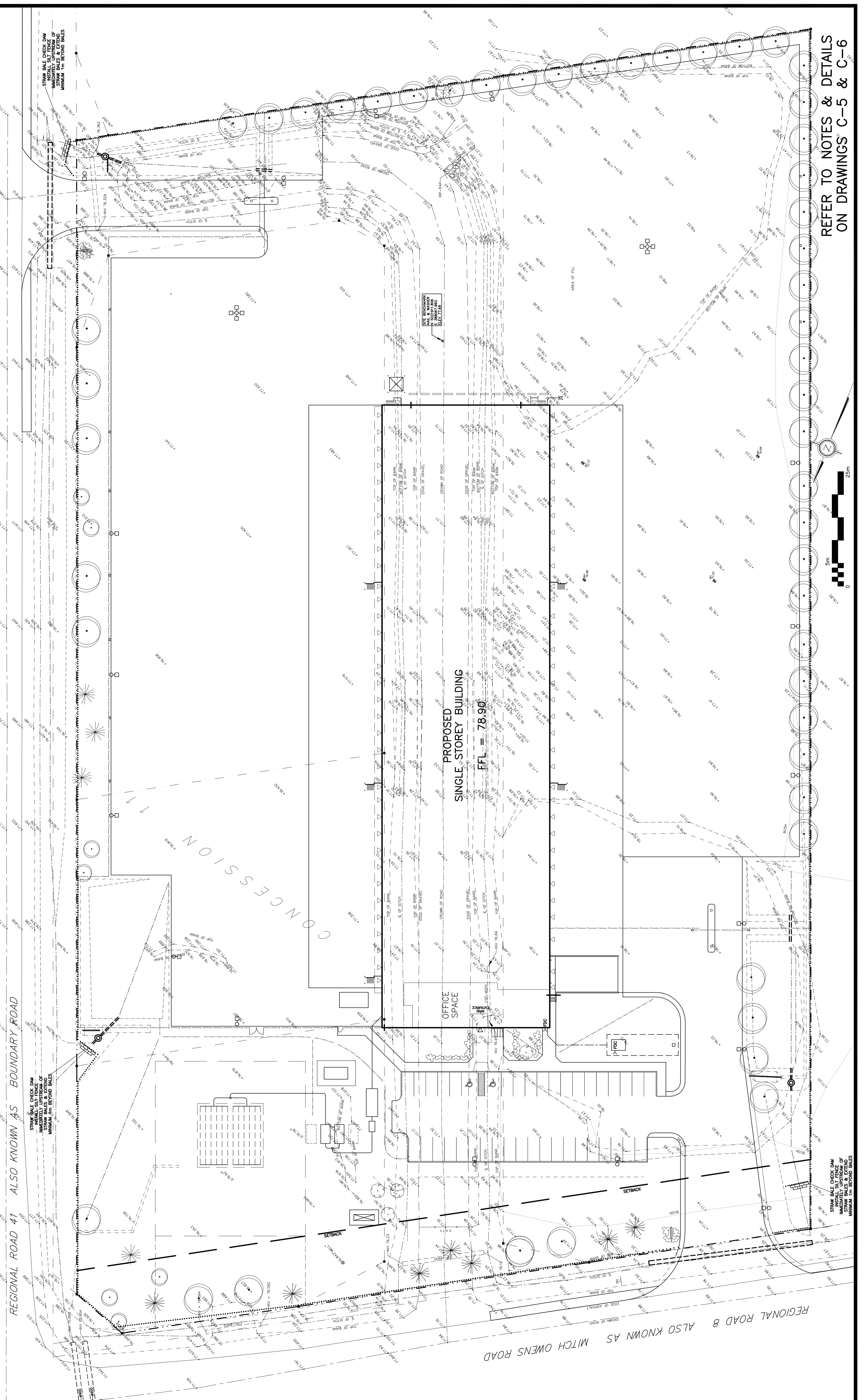
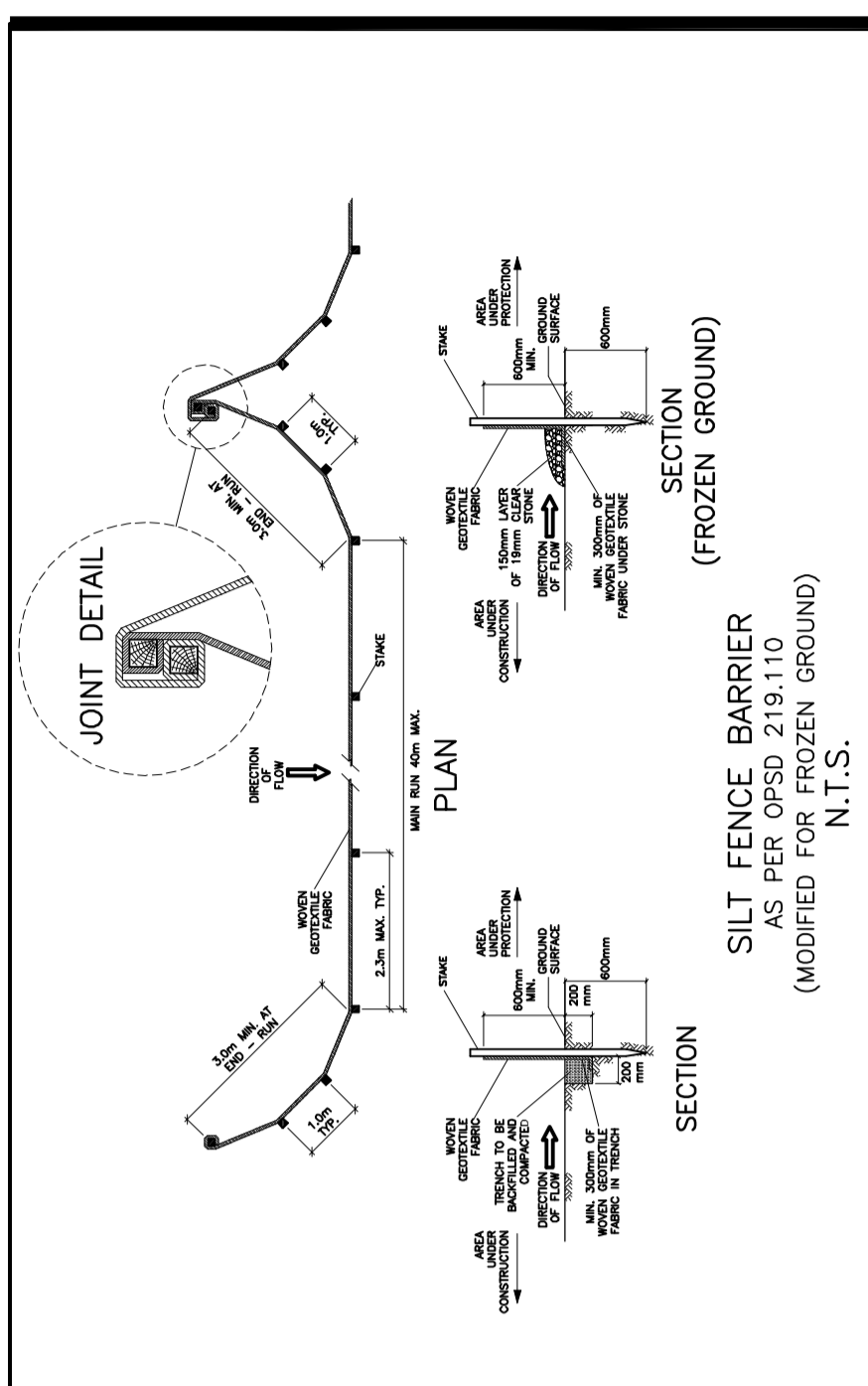
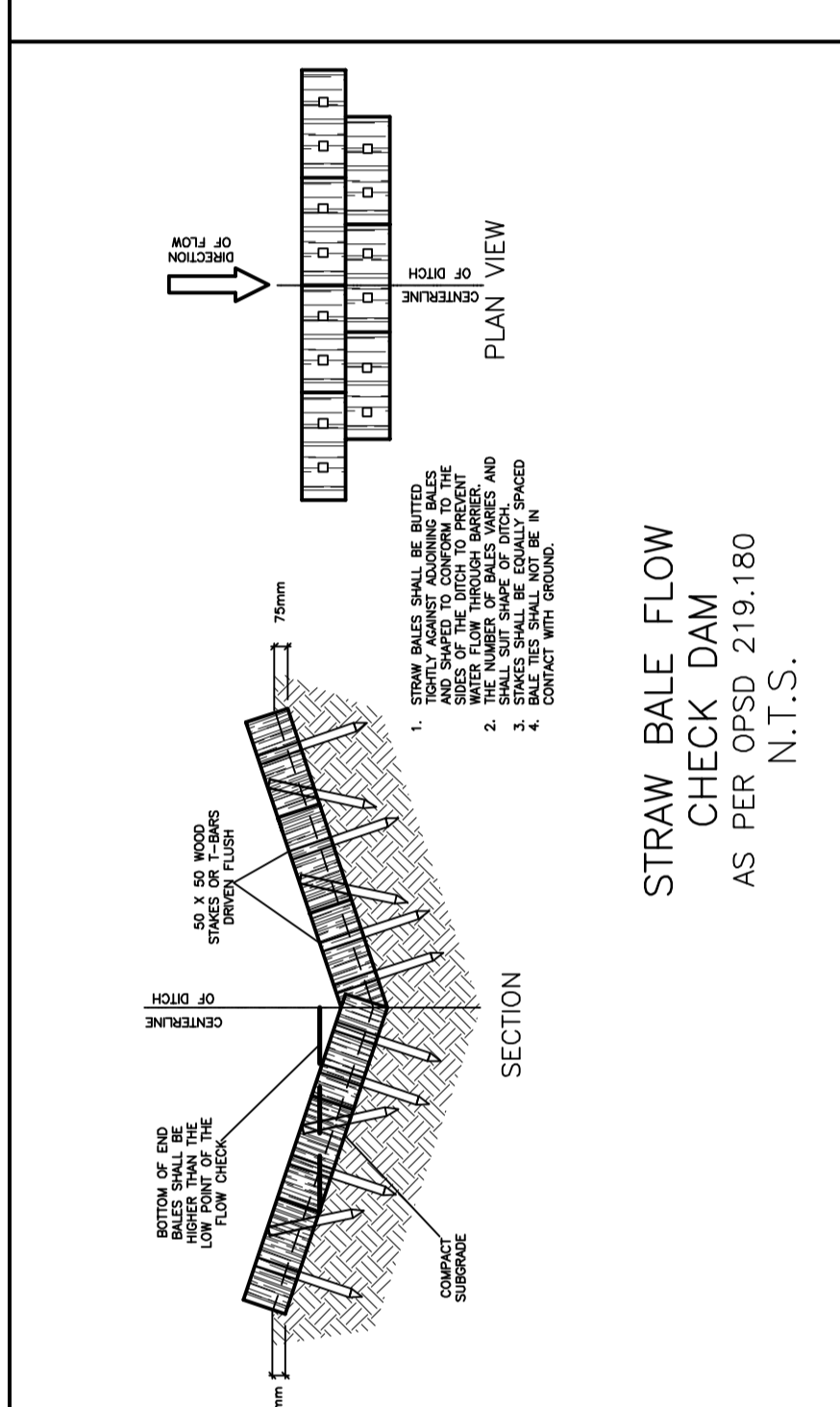
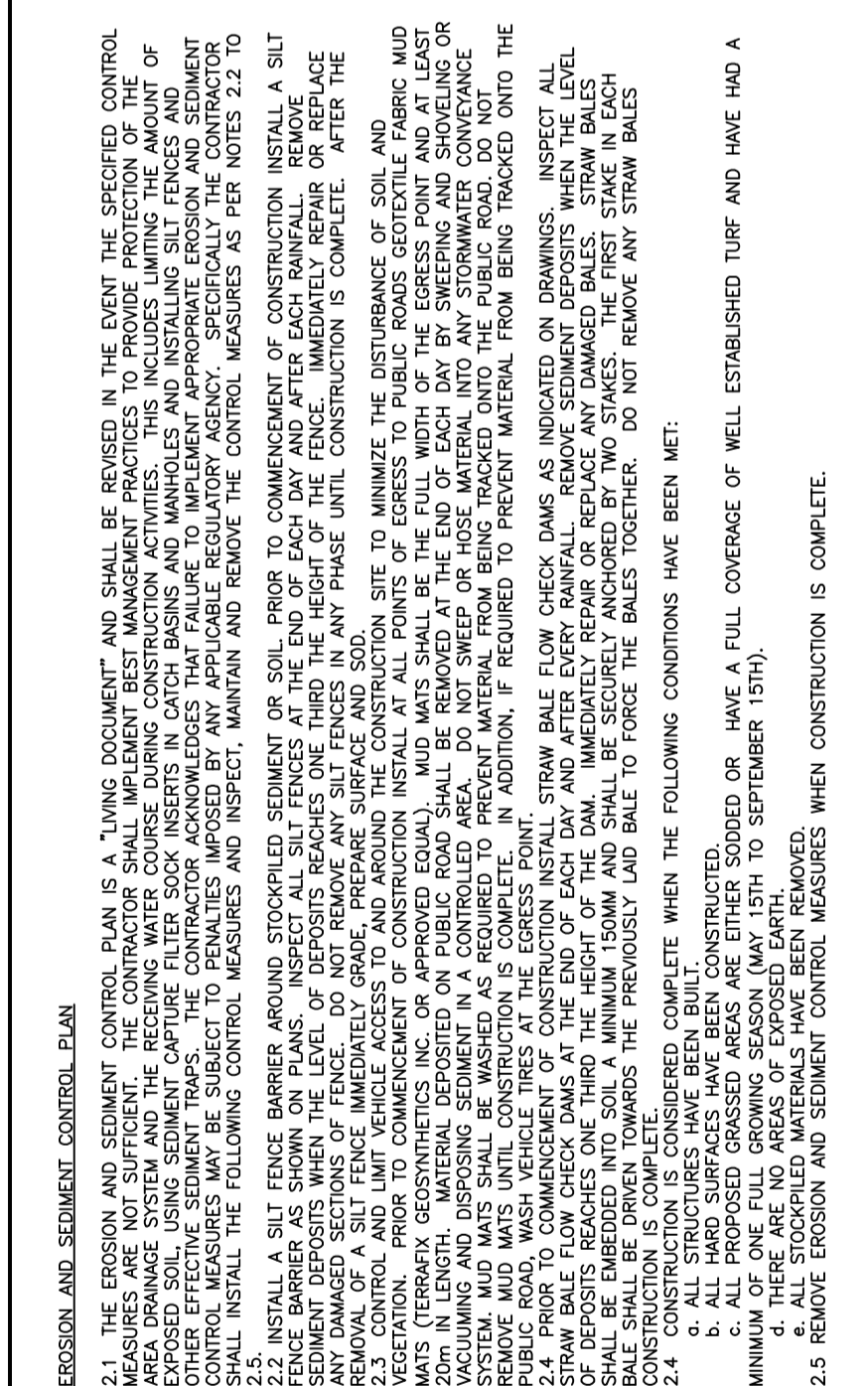
2.1. THE EROSION AND SEDIMENT CONTROL PLAN IS A "TYPING DOCUMENT" AND SHALL BE REVISED IN THE EVENT THE SPECIFIED CONTROL MEASURES ARE NOT SUFFICIENT. THE CONTRACTOR SHALL IMPLEMENT BEST MANAGEMENT PRACTICES TO PROVIDE PROTECTION OF THE EXPOSED SOIL USING SEDIMENT CAPTURE FILTER SOCKS, INTERS IN CATCH BASINS AND MANKHOLES AND INSTALLING SILT FENCES AND OF OTHER EROSION AND SEDIMENT CONTROL MEASURES. THE CONTRACTOR SHALL BE RESPONSIBLE FOR OBTAINING ALL NECESSARY PERMITS AND APPROVALS FROM THE APPLICABLE REGULATORY AGENCY. SPECIFICALLY THE CONTRACTOR SHALL INSTALL THE FOLLOWING CONTROL MEASURES AND MAINTAIN AND REMOVE THE CONTROL MEASURES AS PER NOTES 2.2 TO 2.5.

2.2. INSTALL A SILT FENCE BARRIER AROUND STOCKPILED SEDIMENT OR SOIL PRIOR TO COMMENCEMENT OF CONSTRUCTION. INSTALL A SILT FENCE BARRIER TO PREVENT SEDIMENT FROM BEING TRANSPORTED BY WIND OR WATER TO THE EXPOSED SOIL. AFTER THE REMOVAL OF A SILT FENCE IMMEDIATELY GROUND, REPAIR SURFACE AND SOIL. NOTIFY THE APPLICABLE REGULATORY AGENCY OF ANY DAMAGE TO MATS (TERRAPACK GEOSYNTHETICS INC. OR APPROVED EQUAL). MATS SHALL BE THE FULL WIDTH OF THE EGRESS POINT AND AT LEAST 0.75 M (2 FT) WIDER THAN THE EXPOSED SOIL. MATS SHALL BE REPLACED IMMEDIATELY IF THEY ARE DAMAGED OR WEAR OR ARE NOT WORKING PROPERLY. MATS SHALL NOT BE USED ON PUBLIC ROADS. WASH VEHICLE TIRES AT THE EGRESS POINT. STRAW BALE CHECK DAMS AT THE END OF EACH DAY AND AFTER SAFETY HANDOVERS. REMOVE SEDIMENT DEPOSITS FROM THE LEVEL. STRAW BALE FLOW CHECK DAMS AT THE END OF EACH DAY AND AFTER SAFETY HANDOVERS. REMOVE SEDIMENT DEPOSITS FROM THE LEVEL. BALE SHALL BE EMPLOYED INTO SOIL A MINIMUM 150MM AND SHALL BE SECURELY ANCHORED BY TWO STRIKES. THE FIRST STRIKE IN EACH BALE SHALL BE DIVERTED TOWARDS THE PREVIOUSLY LAYED BALE TO FORCE THE BALES TOGETHER. DO NOT REMOVE ANY STRAW BALES.

2.3. CONTROL AND LIMIT VEHICLE ACCESS TO AND AROUND THE CONSTRUCTION SITE TO MINIMIZE THE DISTURBANCE OF SOIL AND ORGANIC MATS (TERRAPACK GEOSYNTHETICS INC. OR APPROVED EQUAL). MATS SHALL BE THE FULL WIDTH OF THE EGRESS POINT AND AT LEAST 0.75 M (2 FT) WIDER THAN THE EXPOSED SOIL. MATS SHALL BE REPLACED IMMEDIATELY IF THEY ARE DAMAGED OR WEAR OR ARE NOT WORKING PROPERLY. MATS SHALL NOT BE USED ON PUBLIC ROADS. WASH VEHICLE TIRES AT THE EGRESS POINT. STRAW BALE CHECK DAMS AT THE END OF EACH DAY AND AFTER SAFETY HANDOVERS. REMOVE SEDIMENT DEPOSITS FROM THE LEVEL. STRAW BALE FLOW CHECK DAMS AT THE END OF EACH DAY AND AFTER SAFETY HANDOVERS. REMOVE SEDIMENT DEPOSITS FROM THE LEVEL. BALE SHALL BE EMPLOYED INTO SOIL A MINIMUM 150MM AND SHALL BE SECURELY ANCHORED BY TWO STRIKES. THE FIRST STRIKE IN EACH BALE SHALL BE DIVERTED TOWARDS THE PREVIOUSLY LAYED BALE TO FORCE THE BALES TOGETHER. DO NOT REMOVE ANY STRAW BALES.

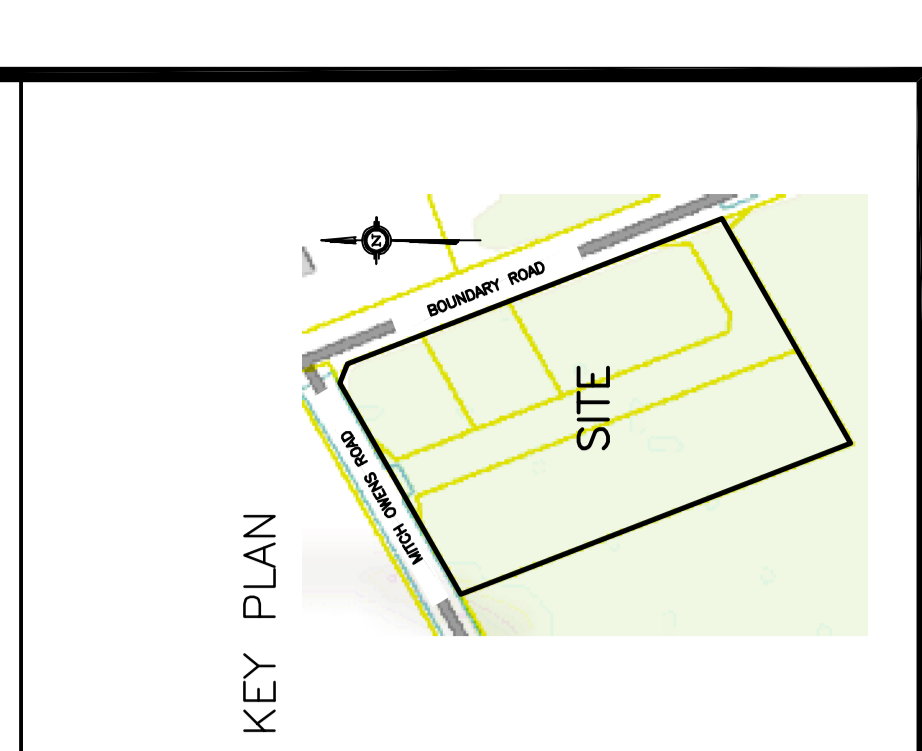
2.4. CONSTRUCTION IS CONSIDERED COMPLETE WHEN THE FOLLOWING CONDITIONS HAVE BEEN MET:
 1. ALL EXPOSED SURFACES HAVE BEEN CONSTRUCTED.
 2. ALL HARD SURFACES HAVE BEEN CONSTRUCTED.
 3. THERE ARE NO AREAS OF EXPOSED EARTH.
 4. THERE ARE NO AREAS OF EXPOSED EARTH.
 5. CONSTRUCTION SHALL BE COMPLETED BY 15TH TO 30TH SEPTEMBER (15th).

2.5. REMOVE EROSION AND SEDIMENT CONTROL MEASURES WHEN CONSTRUCTION IS COMPLETE.



DRAWING LEGEND

- CB CATCH BASIN
- WM WATER SERVICE / WATERMAIN
- SM SANITARY SEWER
- ST STORM SEWER
- FIRE HYDRANT
- PCB THE DEPARTMENT CONNECTION
- UP O
- EXISTING GRADE ELEVATION
- + PROPOSED GRADE ELEVATION
- CONCRETE
- GRAVEL SURFACE
- HEAVY DUTY PAVEMENT
- SLOPE OF GRADE
- EMERGENCY OVERLAND FLOW
- SWALE/DITCH (CENTRALS)
- SILT FENCE BARRIER
- PROPERTY LINE
- FIRST FLOOR ELEVATION
- UNDERSIDE OF FOOTING ELEVATION



No.	Date	REVISION
1	JUN 9-18	ISSUED FOR CLIENT REVIEW
2	DEC 19-18	ISSUED FOR APPROVAL
3	MAR 5-19	RE-ISSUED FOR APPROVAL
4	MAR 20-19	ISSUED FOR BUILDING PERMIT
5	MAY 2-19	RE-ISSUED FOR APPROVAL
6	JUN 25-19	CITY FILE & PLAN NO. ADDED RE-ISSUED FOR APPROVAL

D. B. GRAY ENGINEERING INC.
 Professional Geotechnical & Survey Engineering
 700 Long Point Circle
 Ottawa, Ontario K1T 4E9
 Tel: 613-425-8044
 dgray@dbgrayeng.com

PROPOSED CROSS DOCK FACILITY
MITCH OWENS ROAD / BOUNDARY ROAD
 OTTAWA, ONTARIO

EROSION & SEDIMENT CONTROL PLAN

Drawn: D.B.G.
 Ver. Scale: 1:400
 Date: DEC 19-18
 Job No: 18029

C-3 of 8