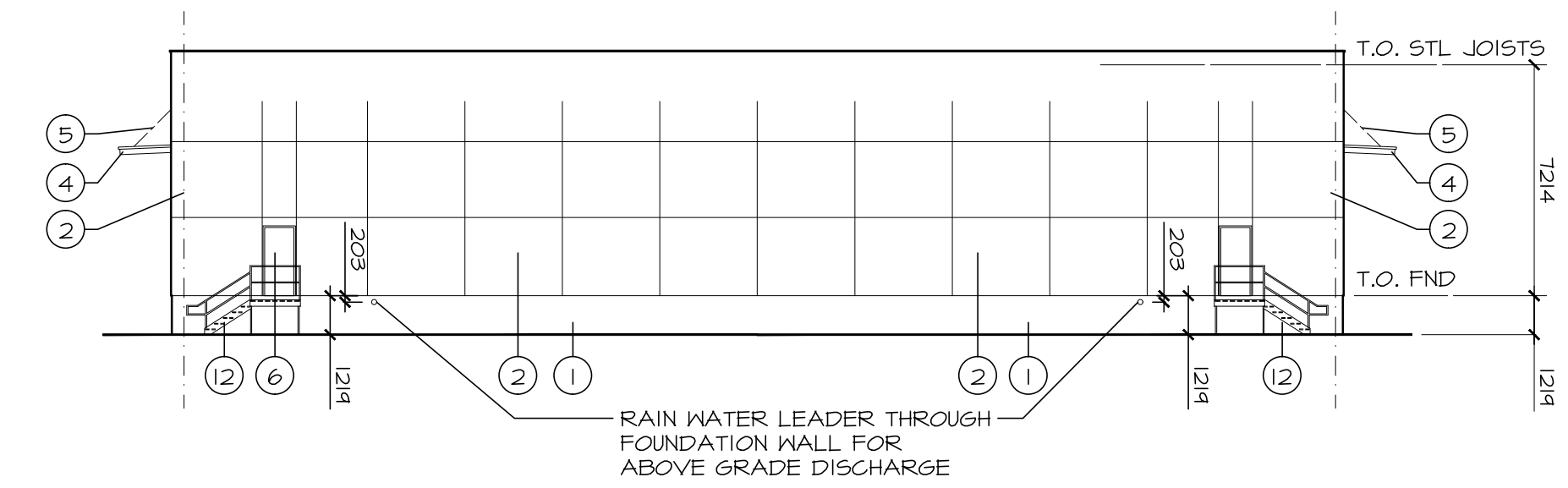
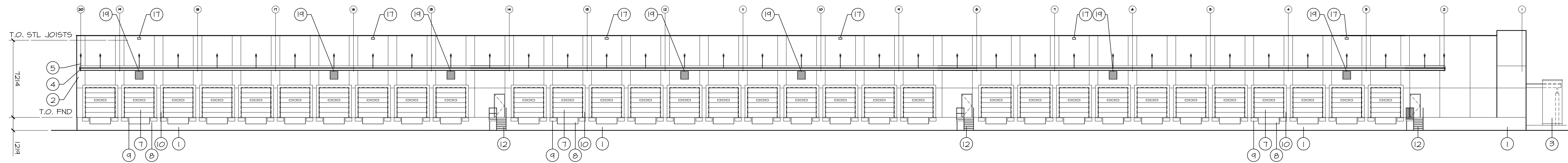


6 EXTERIOR WINDOWS
A3.1 1:50 metric

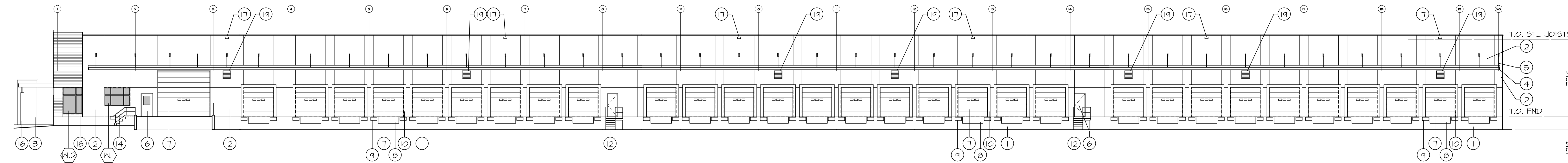
TYPICAL CROSS DOCK DOOR O/H DOOR AT RAMP



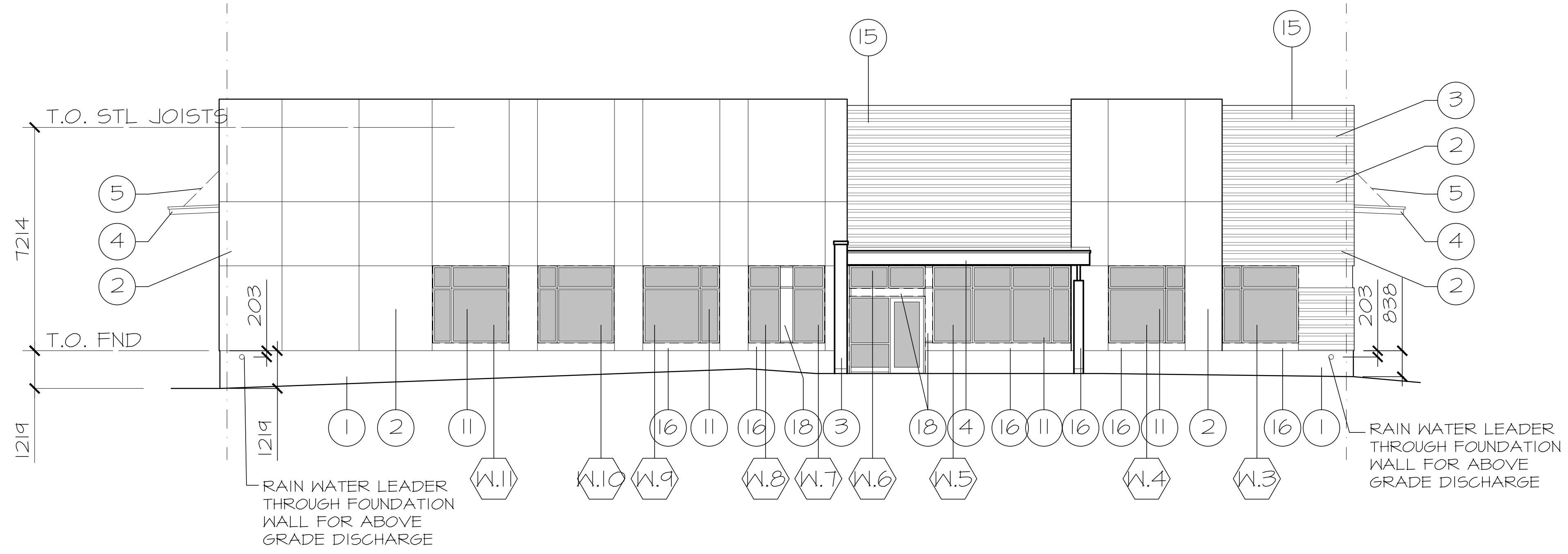
2 ELEVATION - SOUTH (REAR)
A3.1 1:200 metric



4 ELEVATION - EAST (LEFT)
A3.1 1:200 metric



3 ELEVATION - WEST (RIGHT)
A3.1 1:200 metric



1 ELEVATION - NORTH (FRONT)
A3.1 1:100 metric

j. guy monette
architecture and urban design
308a fairmont ave. ottawa, on, K1Y 1Y8
613.659.6463 guymonette@rogers.com

- ELEVATION NOTES:**
- 1 EXPOSED CONC. FND WALL
 - 2 PRECAST CONCRETE PANEL
 - 3 PRECAST CONCRETE PANEL PIER
 - 4 PREFIN METAL FASCIA
 - 5 CANOPY SUPPORT BRACKET
 - 6 MAN DOOR - PAINT FINISH
 - 7 OVERHEAD GARAGE DOOR
 - 8 DOCK LEVELLER
 - 9 DOCK BUMPERS
 - 10 DOCK SEAL
 - 11 ALUMINUM WINDOW
 - 12 STEEL STAIRS
 - 13 CONCRETE STAIRS
 - 14 METAL RAILINGS & GUARDS
 - 15 METAL SIDING
 - 16 PREFIN METAL COMPOSITE PANEL BELOW WINDOWS AND COLUMN COVER
 - 17 ROOF SCUPPER FOR OVERFLOW - SEE DETAIL
 - 18 INSULATED SPANDREL PANEL WINDOW FRAME SYSTEM
 - 19 VENTILATION LOUVER 30"x30" - SEE MECHANICAL

REVISION	No	DATE	PAR
Change to metric for site plan app.	4	18Jun2019	
Rev for permit review comments from City	3	25 Apr 2019	
Issued for Permit	2	19 Mar 2019	
Issued for Site Plan Control w/ Revisions	1	4 Mar 2019	
Change to Conventional Steel	8	8 Feb 2019	bjs
Issued for Site Plan Control	0	17Dec2018	bjs



It is the responsibility of the appropriate Contractor to check and verify all dimensions on site and report all errors and/or omissions to the Architect.

All Contractors must comply with all pertinent codes and by-laws.

Do not scale drawings. This drawing may not be used for construction until signed.

Architect's copyright reserved.

PROJET
PROPOSED TRUCK DOCK TRANSFER FACILITY

Boundary Road
Ottawa, ON

TITRE DU DESSIN
ELEVATIONS

DESIGNED BY Brian Sindall	CHECKED BY GUY MONETTE
DRAWN BY STAFF	SCALE As Noted
PROJECT No.	DRAWING No.

2018-00 **A3.1**

D07-12-18-0189 plan # 17928