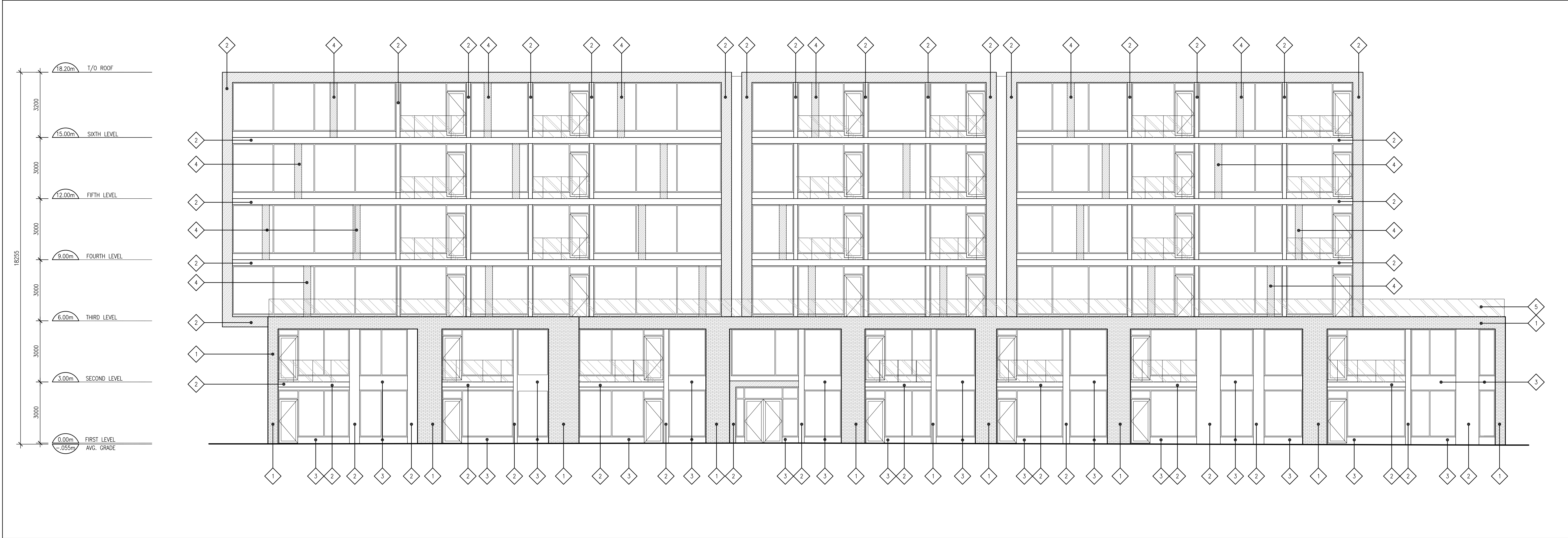


2 NORTH ELEVATION  
A201 SCALE: 1:100



1 EAST ELEVATION  
A201 SCALE: 1:100

*DJ*

DOUGLAS JAMES, MCIP, RPP  
MANAGER, DEVELOPMENT REVIEW - CENTRAL  
PLANNING, INFRASTRUCTURE & ECONOMIC  
DEVELOPMENT DEPARTMENT, CITY OF OTTAWA

APPROVED  
By Jamesdo at 12:06 pm, Jun 19, 2019

CLADDING LEGEND

- 1 BRICK
- 2 FIBRE CEMENT PANELS
- 3 PREFINISHED METAL CLADDING
- 4 ALUMINUM PANEL
- 5 GLASS GUARD

3 CLADDING LEGEND  
A201 SCALE: 1:50

- GENERAL ARCHITECTURAL NOTES:
- This drawing is the property of the Architect and may not be reproduced or used without the expressed consent of the Architect.
  - Drawings are not to be scaled. The Contractor is responsible for checking and verifying all levels and dimensions and shall report all discrepancies to the Architect and obtain clarification prior to commencing work.
  - Upon notice in writing, the Architect will provide written/graphic clarification or supplementary information regarding the intent of the Contract Documents.
  - The Architectural drawings are to be read in conjunction with all other Contract Documents including Project Manuals and the Structural, Mechanical and Electrical Drawings.
  - Positions of exposed or finished Mechanical or Electrical devices, fittings and fixtures are indicated on the Architectural Drawings. Locations shown on the Architectural Drawings shall govern over Mechanical and Electrical Drawings. Mechanical and Electrical items not clearly located will be located as directed by the Architect.
  - These documents are not to be used for construction unless specifically noted for such purpose.

REVISION RECORD

3	RE-ISSUED FOR SITE PLAN CONTROL	2019-01-11
2	ISSUED FOR SITE PLAN CONTROL	2018-05-24
1	ISSUED FOR COORDINATION	2018-02-23
REV.	ISSUANCE	DATE

ISSUE RECORD



project1  
studio

Project1 Studio Incorporated  
[613.233.3636] | info@project1studio.ca

263 GREENSWAY

263 Greensway Avenue  
Ottawa, ON

PROJ	SCALE	DRAWN	REVIEWED
1722.4	AS NOTED	DP	RMK

EAST ELEVATION  
NORTH ELEVATION

A201