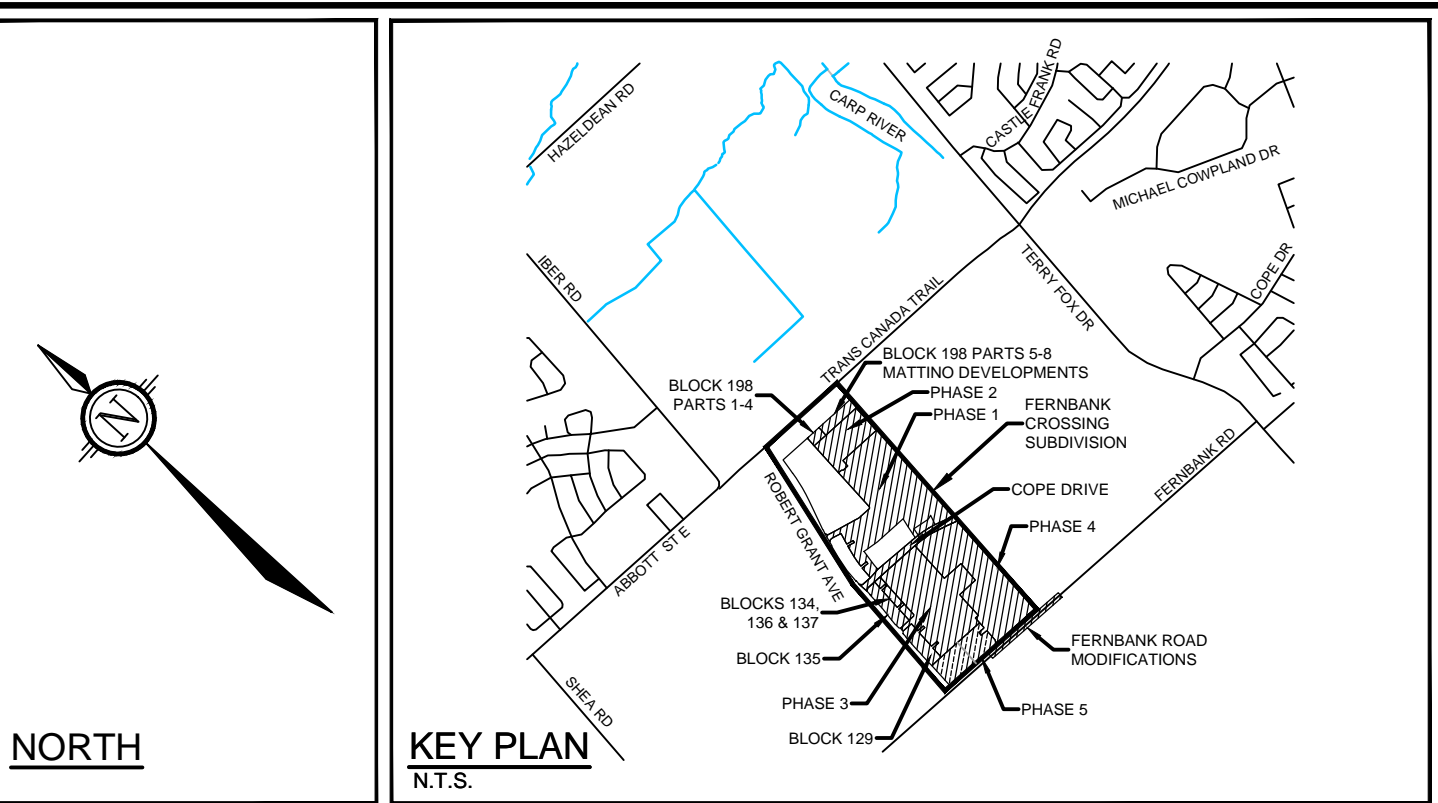


KEY	QTY	BOTANICAL NAME	COMMON NAME	SIZE	COND	SPACING
<b>Deciduous Trees</b>						
ARN	3	Acer rubrum 'Northwood'	Northwood Red Maple	60mm Cal	WB	As Shown
ASB	7	Acer saccharum 'Barrett Cole'	Apollo Sugar Maple	50mm Cal	WB	As Shown
ALS	2	Amenanther laevis 'Spring Flurry'	Spring Flurry Serviceberry	50mm Cal	WB	As Shown
CRC	11	Crataegus crus-galli 'Inermis'	Thornless Cockspur Hawthorn	50mm Cal	WB	As Shown
GBD	11	Ginkgo biloba 'Obelisk'	Obelisk Ginkgo	150cm Ht	PT	As Shown
GTI	3	Gleditsia triacanthos var. inermis 'Impicola'	Imperial Honeylocust	60mm Cal	WB	As Shown
MSR	8	Malus sargentii 'Rosea'	Pink Sargent Crabapple	45mm Cal	WB	As Shown
MSL	7	Malus 'Sir Lancelot'	Sir Lancelot Crabapple	45mm Cal	WB	As Shown
SR	6	Syringa reticulata	Japanese Tree Lilac	50mm Cal	WB	As Shown
TCH	2	Tilia cordata 'Halka'	Summer Sprite Linden	50mm Cal	WB	As Shown
<b>Deciduous Shrubs</b>						
Csa	29	Cornus sericea 'Farrow'	Arctic Fire Dogwood	50cm Ht	PT	As Shown
DI	29	Diervilla lonicera	Bush Honeysuckle	50cm Ht	PT	As Shown



PLANTING NOTES

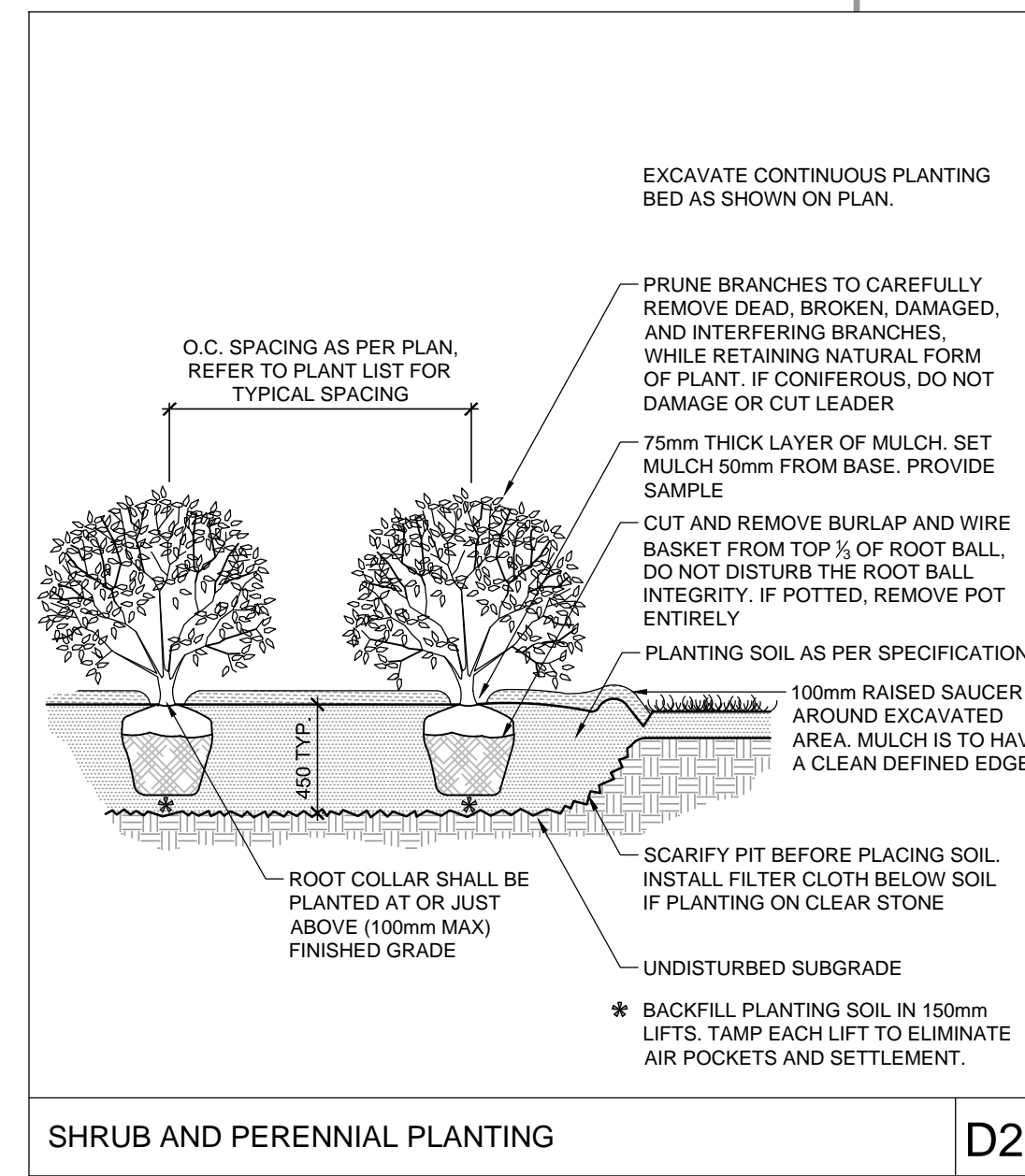
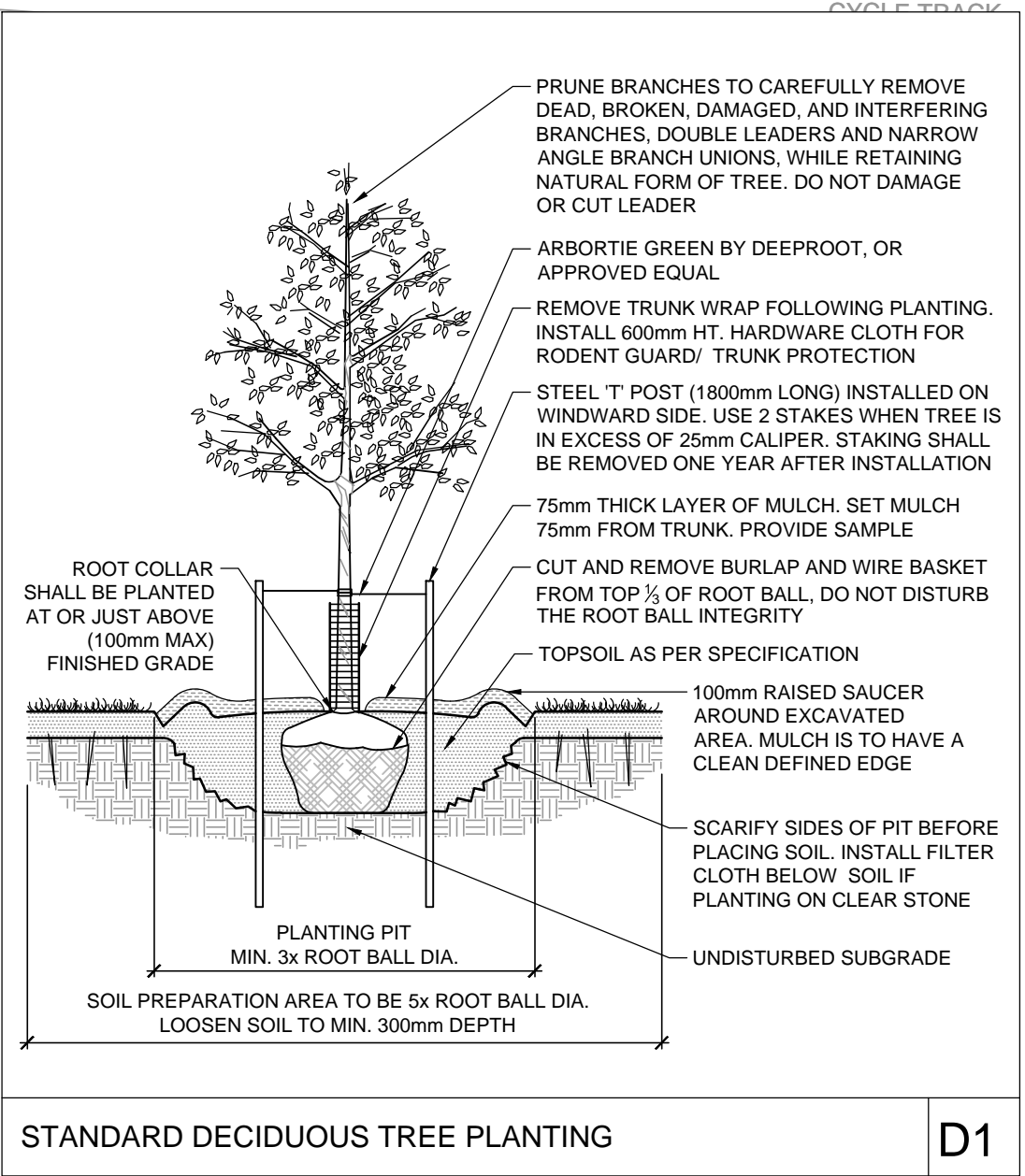
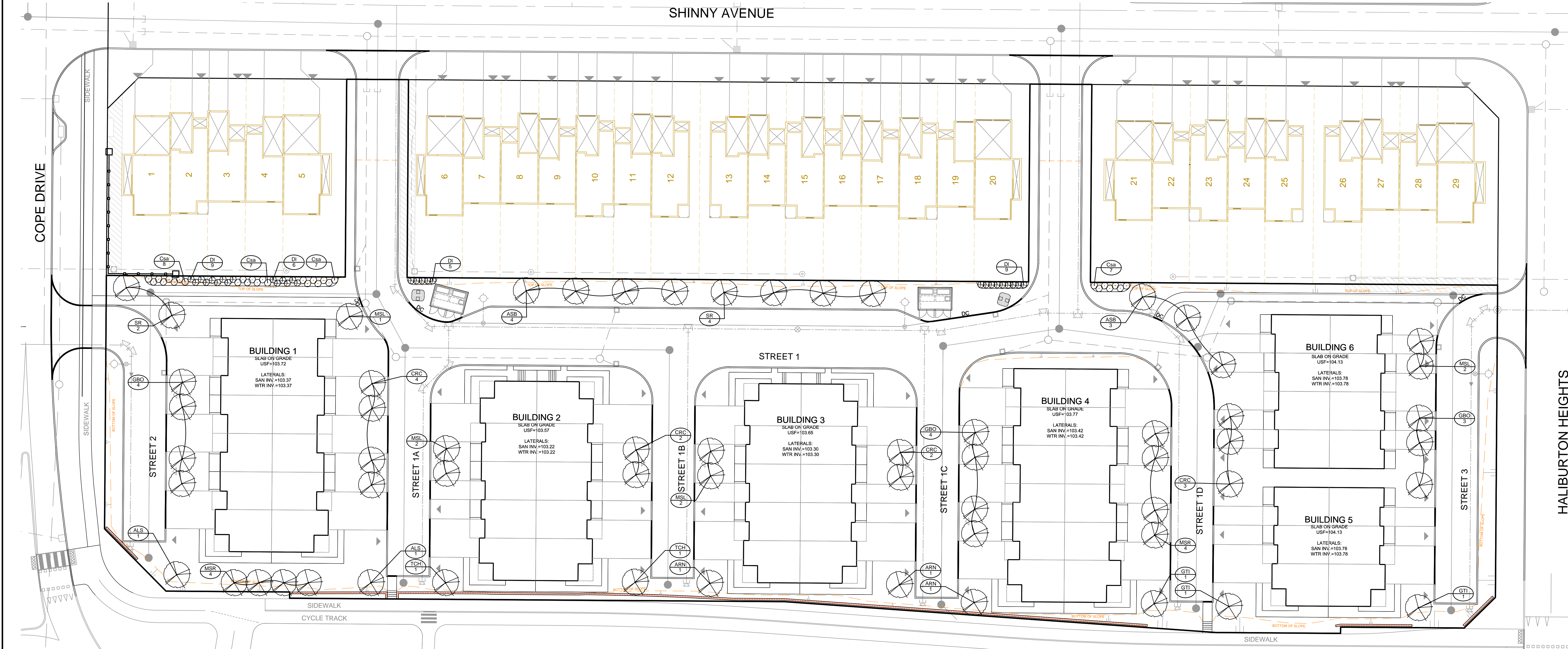
- This drawing shall be read in conjunction with all relevant Architectural, Engineering, and related drawings and documents.
- Refer to Engineering Drawings for Grading. Provide drainage as indicated in grading plan. Round all tops and toes of slopes, smoothly. Compact all areas to 95% Standard Proctor Density unless otherwise noted.
- Refer to Architectural Drawings for site layout.
- Refer to Engineering Drawings for site servicing.
- Contractor must contact utility companies for locates prior to excavation or planting.
- It is essential to use the plans and details in conjunction with the specifications and notes.
- Existing trees to be retained shall be protected according to the contract detail and specifications.
- Plant material shall be No. 1 Grade and shall comply with Canadian Standards for Nursery Stock (latest edition) published by the Canadian Nursery Landscape Association. Use plant material with strong fibrous root system free of disease, defects or injuries, and structurally sound. Use trees with straight trunks, well and characteristically branched for species. Obtain approval from consultant of plant material at source prior to digging. All trees and shrubs shall be container grown, potted, W/B or B/B, as indicated on Plant List. Bare root planting will only be acceptable for certain species and as approved by the Landscape Architect.
- Plant material substitutions shall not be permitted without the written approval from the consultant, with 48 hours notice, prior to shipping plant material.
- Plant locations are schematic / approximate only. Contractor shall stake out locations on site for approval by the Landscape Architect prior to installation. The illustrated number of plants shown in the Planting Plan supersedes the estimated number in the Plant List. Contractor to report any discrepancies to the Landscape Architect prior to installation. Contractor will assume full responsibility if the Landscape Architect is not notified. Shrubs, Perennials, Vines, and Groundcovers shall be planted in a continuous planting bed of 450mm depth with approved topsoil covered with 75mm depth shredded bark mulch.
- Ensure trees are thoroughly watered following planting. Monitor material and ensure adequate moisture until acceptance.
- In heavy clay or poorly drained soils, set root ball with root collar 75-100mm higher than finished grade.
- Sod and/or seed areas to receive 100mm depth topsoil as specified. Sod shall be No. 1 Kentucky Bluegrass Sod grown from minimum mixture of 3 Kentucky Bluegrass cultivars. Quality and source shall comply with Canadian Standards for Nursery Stock, Section 17, (latest edition) published by the Canadian Nursery Landscape Association. Unless otherwise specified, turf is to be maintained by the contractor until a second cutting is accepted by the Landscape Architect.
- Apply the following mineral fertilizer unless soil tests show other requirements: Sodded areas - (8-32-16) 8% Nitrogen, 32% Phosphorus, 16% Potash at a rate of 350g/m<sup>2</sup>. Planting Beds - (8-32-16) - 8% Nitrogen, 32% Phosphorus, 16% Potash as per manufacturer specifications.
- Reinstate all areas damaged or disturbed beyond the Limit of Work.

LANDSCAPE LEGEND:

- PROPOSED DECIDUOUS TREE
- PROPOSED DECIDUOUS SHRUBS
- SPECIES (SEE PLANT LIST)
- QUANTITY

GEOTECHNICAL NOTES

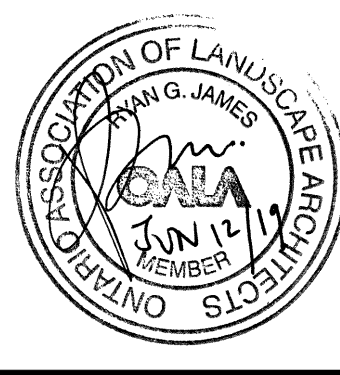
- This planting plan has been developed in accordance with the Geotechnical Investigation Fernbank Crossing Residential Subdivision Block 135 Report provided to Novatech by Brett Webster and Brent Wiebe (GEMTEC Project No. 64153.74) on March 20, 2019. Additional input was provided by Luc Bouchard (GEMTEC, Copied Brent Wiebe) in an email to Ryan James on June 3, 2019.
- The 2017 clay soils guideline was applied.
- All new trees proposed on the property meet with soil volume requirements. See figure FIG-VOL which demonstrates the scenario with the least amount of soil volume available to proposed trees.



NOTE:  
THE POSITION OF ALL POLE LINES, CONDUITS, WATERMANS, SEWERS AND OTHER UNDERGROUND AND OVERGROUND UTILITIES AND STRUCTURES IS NOT NECESSARILY SHOWN ON THE CONTRACT DRAWINGS, AND WHERE SHOWN, THE ACCURACY OF THE POSITION OF SUCH UTILITIES AND STRUCTURES IS NOT GUARANTEED. BEFORE STARTING WORK, DETERMINE THE EXACT LOCATION OF ALL SUCH UTILITIES AND STRUCTURES AND ASSUME ALL LIABILITY FOR DAMAGE TO THEM.

SCALE				DESIGN	
1:300				CHECKED	KEW
1:300				DRAWN	SC
0 3 6 9 12				CHECKED	KEW
				APPROVED	SC
				REVISION	RGJ
2	AS PER CITY COMMENTS	JUN 12/19	RGJ		
1	ISSUED FOR SITE PLAN SUBMISSION	MAR 22/19	SC		
No.	REVISION	DATE	BY		

FOR REVIEW ONLY



**NOVATECH**  
Engineers, Planners & Landscape Architects  
Suite 200, 240 Michael Cowpland Drive  
Ottawa, Ontario, Canada K2M 3P6  
Telephone: (613) 254-9643  
Facsimile: (613) 254-5867  
Website: www.novatech-eng.com

CITY OF OTTAWA FERNBANK CROSSING - BLOCK 135		PROJECT No.	117089
LANDSCAPE PLAN		REV	REV # 2
		DRAWING No.	117089-L

C:\007117089\CAD\landscape\Plan\117089\_L.dwg L1, Jun 12, 2019, 1:40pm, Novatech