

**NOTES:**

- CONTRACTOR TO VERIFY LOCATION OF ALL BURIED SERVICES PERMIT TO START OF CONSTRUCTION
- TOPOGRAPHIC INFORMATION PROVIDED BY MSP HAS BEEN VERIFIED AND FOUND TO BE ACCURATE. ALL ADJUSTMENTS TO BE MADE FROM ASSUMED LOCAL DATUM
- LEGAL BOUNDARY SHOWN IS APPROXIMATE AND IS NOT TO BE USED FOR CONVEYANCE PURPOSES. SITE BOUNDARY MUST BE CONFIRMED BY A LICENSED ON-GRID LAND SURVEYOR (O.G.S.)
- ALL WATER SERVICES TO HAVE 2.0M COVER MINIMUM
- PROTECT ALL EXISTING UTILITIES AND SERVICES AS SHOWN ON THE PLAN AND RECORD DRAWINGS
- REFER TO THE PLAN FOR ALL DESIGN DIMENSIONS, SETBACK REQUIREMENTS AND SITE DATA
- SEMI-ANNUAL AND EROSION CONTROL
- CONTRACTOR IS RESPONSIBLE TO INSTALL, MAINTAIN AND MONITOR EROSION CONTROL MEASURES, SEDIMENT AND EROSION CONTROL MEASURES, SLOPE PROTECTION MEASURES AND OTHER SLOPE STABILIZATION MEASURES. ALL MEASURES TO BE CONSIDERED A TEMPORARY MEASURE WHICH WILL BE ABANDONED IN THE EVENT THE CONTROL MEASURES ARE DEEMED UNSUCCESSFUL.

**LEGEND:**

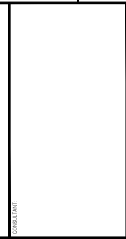
- EXISTING PROPERTY LINE
- SETBACK
- EXISTING EDGE OF PAVEMENT
- EXISTING EDGE OF DRIVEWAY
- EXISTING EDGE OF DRIVEWAY
- WATERMAIN
- SANSEWER BY OTHERS
- OVERHEAD WIRES
- PROPOSED UTILITY ROUTE
- EXISTING SIB
- EXISTING CURB
- EXISTING DRIVEWAY
- EXISTING DRIVEWAY
- EXISTING UTILITY POLE TO BE REMOVED
- EXISTING LAMP POLE TO BE REMOVED
- PROPOSED LAMP POLE
- EXISTING UTILITY POLE
- EXISTING VEGETATION
- NEW WELL
- STRAWBALE CHECK DAM
- PROPOSED NEW BUILDING OUTLINE
- HEAVY DUTY ASPHALT
- LIGHT DUTY ASPHALT
- SETBACK

**TEMPORARY BENCH MARKS**

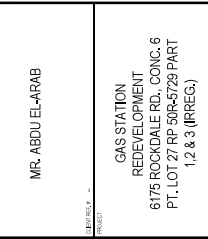
T.B.M.#	ELEVATION (m)	DESCRIPTION
TB.M.01	75.41	TOP OF SIB



WSP  
 1500 SHEPPARD AVENUE  
 UNIT 100  
 SCARBOROUGH, ONTARIO M1B 4Y6  
 PHONE: (416) 291-8800  
 FAX: (416) 291-8801  
 WWW.WSP.CA



MR. ABU EL-ARAB  
 GAS STATION  
 REDEVELOPMENT  
 6175 ROCKDALE RD., CONC. 6  
 PT. 1, LOT 127 R/F 50R5729 PART  
 1/2 & 3 (IRREG.)

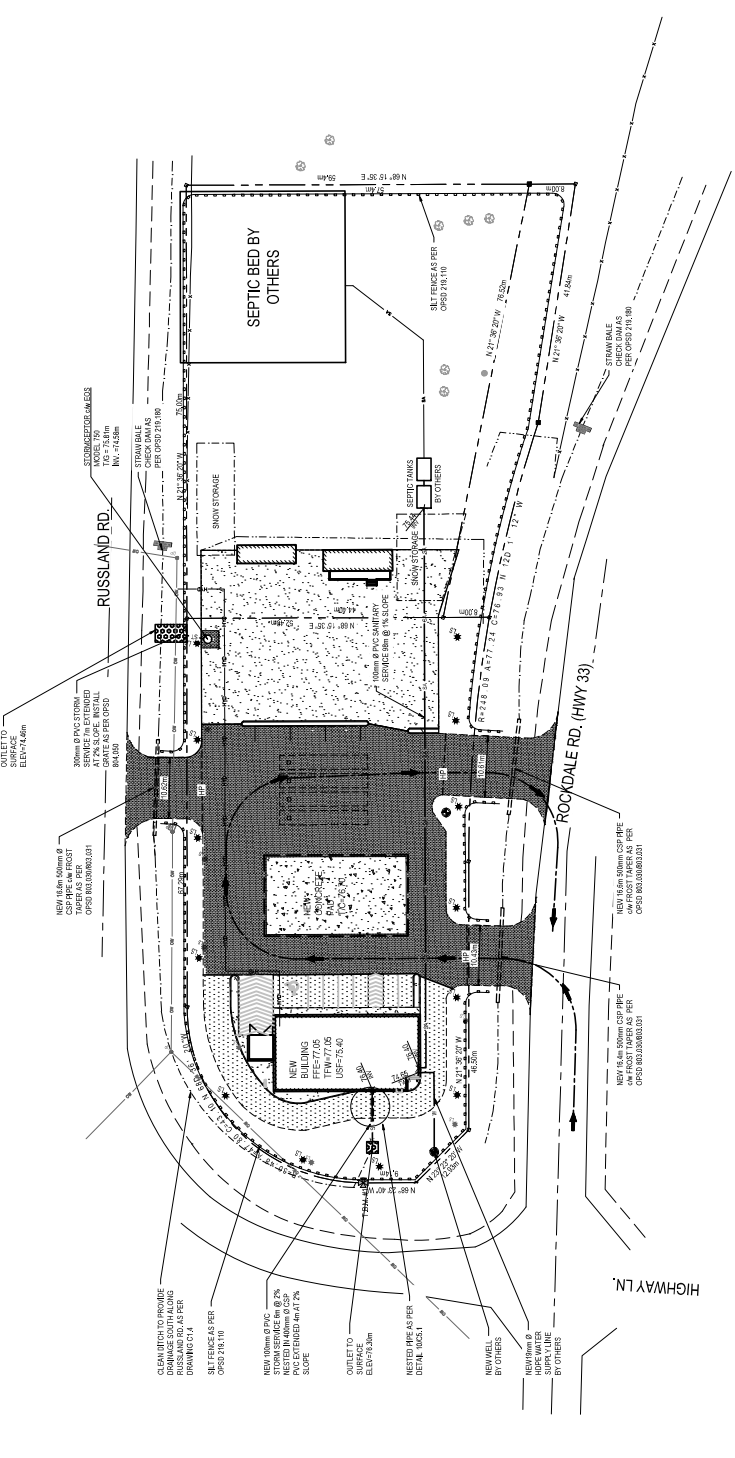


NO.	DATE	ISSUED FOR REVIEW
1	APRIL 2018	ISSUED FOR REVIEW
2	APRIL 2018	ISSUED FOR REVIEW
3	MAY 2018	ISSUED FOR REVIEW
4	JULY 2017	ISSUED FOR REVIEW
5	NOV 2017	ISSUED FOR REVIEW
6	NOV 2017	ISSUED FOR REVIEW
7	NOV 2017	ISSUED FOR REVIEW
8	NOV 2017	ISSUED FOR REVIEW
9	NOV 2017	ISSUED FOR REVIEW
10	NOV 2017	ISSUED FOR REVIEW

NO.	DATE	ISSUED FOR REVIEW
1	APRIL 2018	ISSUED FOR REVIEW
2	APRIL 2018	ISSUED FOR REVIEW
3	MAY 2018	ISSUED FOR REVIEW
4	JULY 2017	ISSUED FOR REVIEW
5	NOV 2017	ISSUED FOR REVIEW
6	NOV 2017	ISSUED FOR REVIEW
7	NOV 2017	ISSUED FOR REVIEW
8	NOV 2017	ISSUED FOR REVIEW
9	NOV 2017	ISSUED FOR REVIEW
10	NOV 2017	ISSUED FOR REVIEW

PROJECT NO. 17-186200  
 DATE: 12/20/17  
 DRAWN BY: [Name]  
 CHECKED BY: [Name]  
 SCALE: 1:400  
 SHEET NO. 1 OF 1  
 PROJECT TITLE: GAS STATION REDEVELOPMENT  
 CLIENT: CIVIL  
 SHEET NO. 1 OF 1

ISSUE FOR REVIEW  
 DATE: APRIL 8, 2018



NO.	DATE	ISSUED FOR REVIEW
1	APRIL 2018	ISSUED FOR REVIEW
2	APRIL 2018	ISSUED FOR REVIEW
3	MAY 2018	ISSUED FOR REVIEW
4	JULY 2017	ISSUED FOR REVIEW
5	NOV 2017	ISSUED FOR REVIEW
6	NOV 2017	ISSUED FOR REVIEW
7	NOV 2017	ISSUED FOR REVIEW
8	NOV 2017	ISSUED FOR REVIEW
9	NOV 2017	ISSUED FOR REVIEW
10	NOV 2017	ISSUED FOR REVIEW

PROJECT NO. 17-186200  
 DATE: 12/20/17  
 DRAWN BY: [Name]  
 CHECKED BY: [Name]  
 SCALE: 1:400  
 SHEET NO. 1 OF 1  
 PROJECT TITLE: GAS STATION REDEVELOPMENT  
 CLIENT: CIVIL  
 SHEET NO. 1 OF 1

ISSUE FOR REVIEW  
 DATE: APRIL 8, 2018