

MR. ABU ELARAB

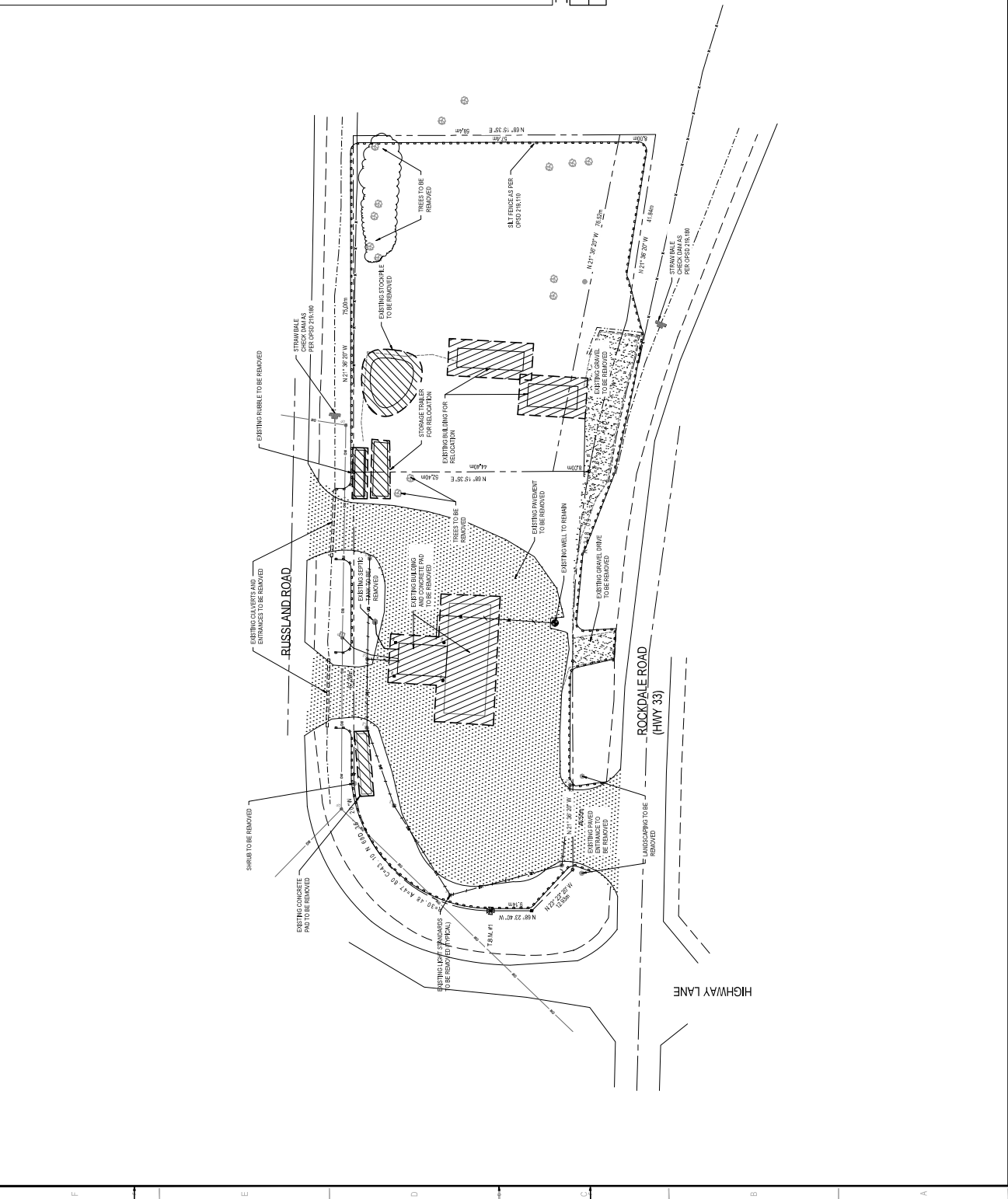
GAS STATION REDEVELOPMENT
6175 ROCKDALE RD., COAC, VA
PT. 1, LOT 27 RP 50R3729 PART 1/2 & 3 (PREG.)



- NOTES:**
1. OWNER TO VERIFY LOCAL REGULATORY JURISDICTION AND OBTAIN ALL NECESSARY PERMITS AND APPROVALS FROM ALL APPLICABLE AGENCIES BEFORE ANY CONSTRUCTION.
 2. ALL UTILITY LOCATIONS AND DEPTHS SHOWN ARE BASED ON RECORD DRAWINGS AND FIELD SURVEY. VERIFY ALL UTILITIES BEFORE ANY CONSTRUCTION.
 3. DESIGNER ASSUMES RESPONSIBILITY FOR OBTAINING ALL NECESSARY PERMITS AND APPROVALS FROM ALL APPLICABLE AGENCIES BEFORE ANY CONSTRUCTION. DESIGNER'S OBLIGATION DOES NOT EXTEND TO OBTAINING ANY PERMITS OR APPROVALS FROM ANY AGENCY OTHER THAN THE COMMONWEALTH OF VIRGINIA.
 4. THE DESIGNER'S OBLIGATION DOES NOT EXTEND TO OBTAINING ANY PERMITS OR APPROVALS FROM ANY AGENCY OTHER THAN THE COMMONWEALTH OF VIRGINIA.
 5. THE DESIGNER'S OBLIGATION DOES NOT EXTEND TO OBTAINING ANY PERMITS OR APPROVALS FROM ANY AGENCY OTHER THAN THE COMMONWEALTH OF VIRGINIA.

LEGEND:

- EXISTING PROPERTY LINE
- EXISTING EASEMENT
- EXISTING UTILITY (INDICATED BY SYMBOLS)
- EXISTING EASEMENT (INDICATED BY SYMBOLS)
- EXISTING DRIVEWAY
- EXISTING DRIVEWAY TO BE REMOVED
- EXISTING DRIVEWAY TO BE RELOCATED
- EXISTING DRIVEWAY TO BE RELOCATED AND WIDENED
- EXISTING DRIVEWAY TO BE RELOCATED AND WIDENED WITH CONCRETIZED DRIVEWAY
- EXISTING DRIVEWAY TO BE RELOCATED AND WIDENED WITH ASPHALTED DRIVEWAY
- EXISTING DRIVEWAY TO BE RELOCATED AND WIDENED WITH GRAVEL DRIVEWAY
- EXISTING DRIVEWAY TO BE RELOCATED AND WIDENED WITH GRAVEL DRIVEWAY AND SIDEWALK
- EXISTING DRIVEWAY TO BE RELOCATED AND WIDENED WITH GRAVEL DRIVEWAY AND SIDEWALK AND CURB
- EXISTING DRIVEWAY TO BE RELOCATED AND WIDENED WITH GRAVEL DRIVEWAY AND SIDEWALK AND CURB AND LANDSCAPING
- EXISTING DRIVEWAY TO BE RELOCATED AND WIDENED WITH GRAVEL DRIVEWAY AND SIDEWALK AND CURB AND LANDSCAPING AND STAMPEDE
- EXISTING DRIVEWAY TO BE RELOCATED AND WIDENED WITH GRAVEL DRIVEWAY AND SIDEWALK AND CURB AND LANDSCAPING AND STAMPEDE AND CONCRETE DRIVEWAY
- EXISTING DRIVEWAY TO BE RELOCATED AND WIDENED WITH GRAVEL DRIVEWAY AND SIDEWALK AND CURB AND LANDSCAPING AND STAMPEDE AND CONCRETE DRIVEWAY AND ASPHALT DRIVEWAY
- EXISTING DRIVEWAY TO BE RELOCATED AND WIDENED WITH GRAVEL DRIVEWAY AND SIDEWALK AND CURB AND LANDSCAPING AND STAMPEDE AND CONCRETE DRIVEWAY AND ASPHALT DRIVEWAY AND SIDEWALK
- EXISTING DRIVEWAY TO BE RELOCATED AND WIDENED WITH GRAVEL DRIVEWAY AND SIDEWALK AND CURB AND LANDSCAPING AND STAMPEDE AND CONCRETE DRIVEWAY AND ASPHALT DRIVEWAY AND SIDEWALK AND CONCRETE DRIVEWAY



TEMPORARY BENCH MARKS

TEAM#	ELEVATION (ft)	DESCRIPTION
TBM-01	78.41	TOP OF SSB
TBM-02	78.41	TOP OF SSB

NO.	DATE	ISSUED FOR REVIEW
1	APRIL 2018	ISSUED FOR REVIEW
2	APRIL 2018	ISSUED FOR REVIEW
3	MAY 2018	ISSUED FOR REVIEW
4	JUNE 2018	ISSUED FOR REVIEW
5	JULY 2018	ISSUED FOR REVIEW
6	AUGUST 2018	ISSUED FOR REVIEW
7	SEPTEMBER 2018	ISSUED FOR REVIEW
8	OCTOBER 2018	ISSUED FOR REVIEW
9	NOVEMBER 2018	ISSUED FOR REVIEW
10	DECEMBER 2018	ISSUED FOR REVIEW

NO.	DATE	ISSUED FOR REVIEW
1	APRIL 2018	ISSUED FOR REVIEW
2	APRIL 2018	ISSUED FOR REVIEW
3	MAY 2018	ISSUED FOR REVIEW
4	JUNE 2018	ISSUED FOR REVIEW
5	JULY 2018	ISSUED FOR REVIEW
6	AUGUST 2018	ISSUED FOR REVIEW
7	SEPTEMBER 2018	ISSUED FOR REVIEW
8	OCTOBER 2018	ISSUED FOR REVIEW
9	NOVEMBER 2018	ISSUED FOR REVIEW
10	DECEMBER 2018	ISSUED FOR REVIEW

CIVIL

REMOVALS

C1.1

ISSUE FOR REVIEW