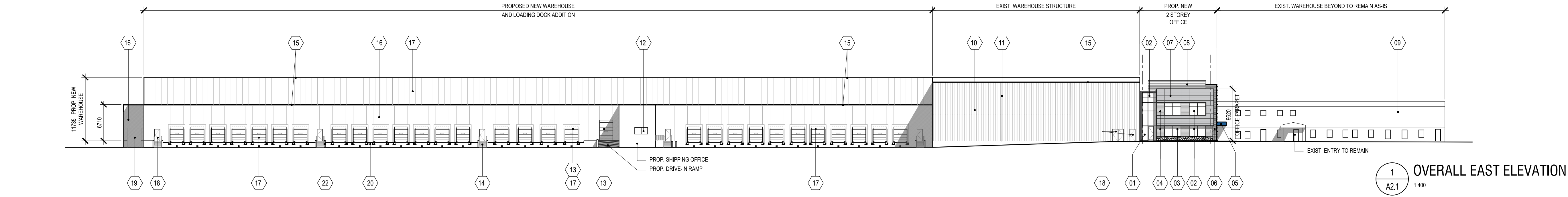
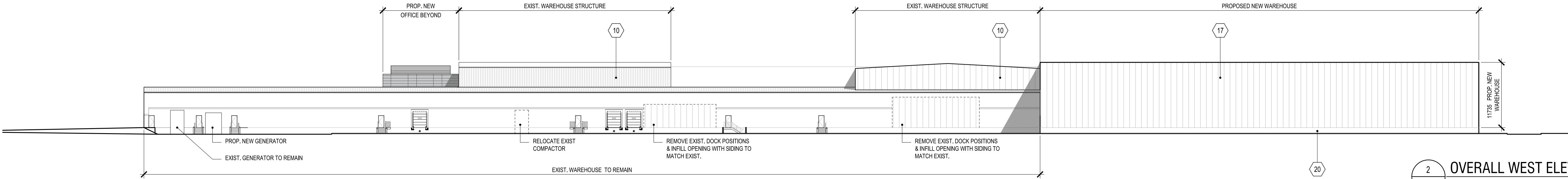


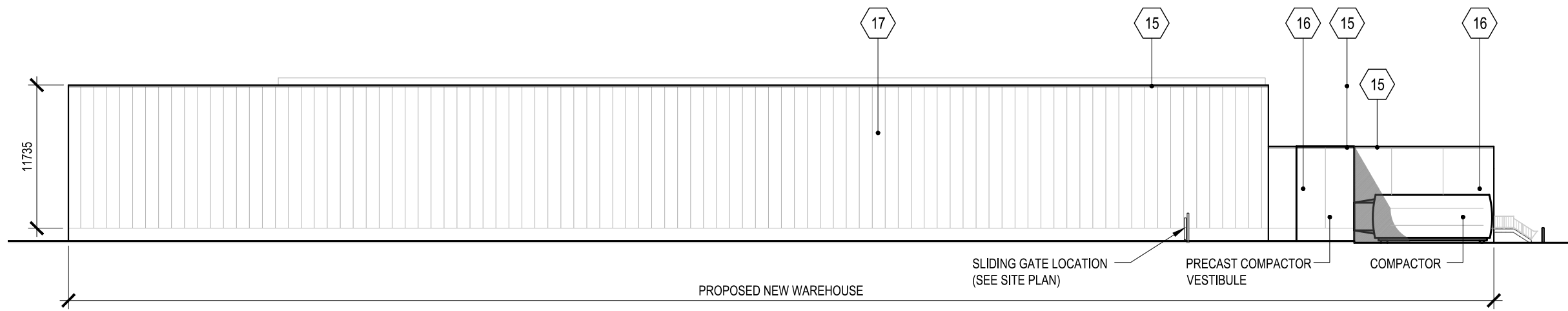
REV	DATE	DESCRIPTION
01	AUG 30, 2018	ISSUED FOR REVIEW
02	SEP 11, 2018	ISSUED FOR SPA APPROVAL



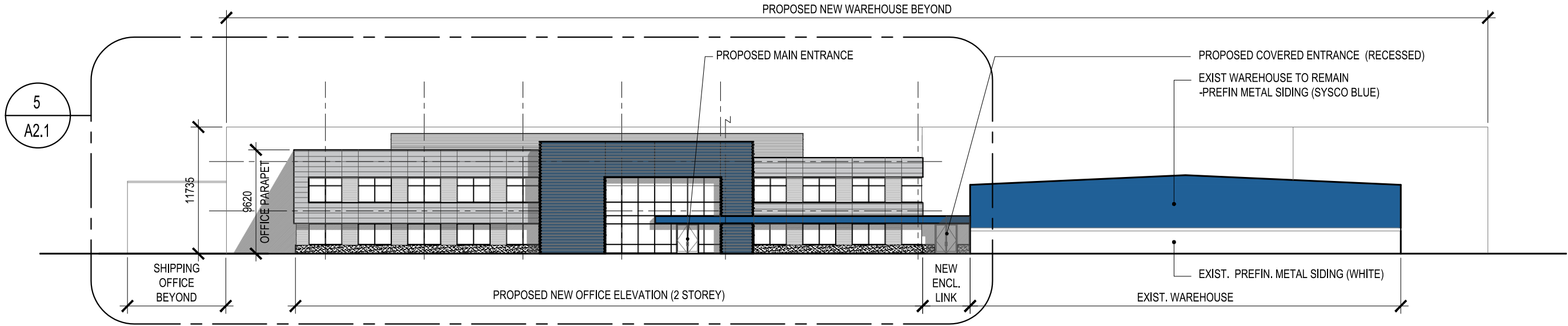
1 OVERALL EAST ELEVATION
A2.1 1:400



2 OVERALL WEST ELEVATION
A2.1 1:400



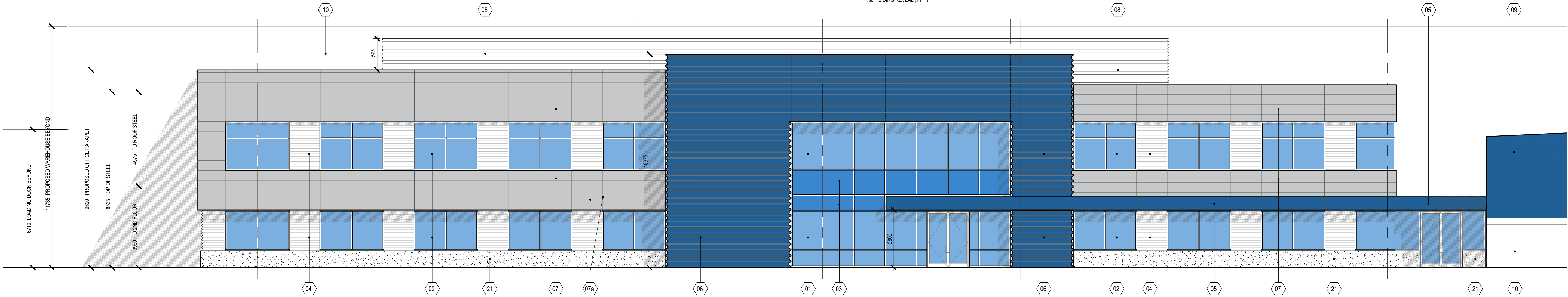
3 OVERALL SOUTH ELEVATION
A2.1 1:400



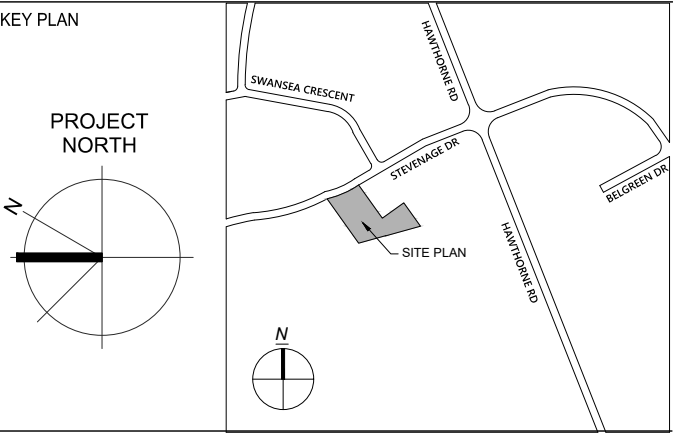
4 OVERALL NORTH ELEVATION
A2.1 1:400

ELEVATION NOTES

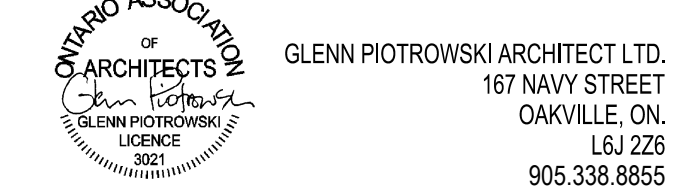
- LOW E, ARGON FILLED, DOUBLE GLAZED, TINTED 'PPG SOLAR BLUE' THERMALLY BROKEN CURTAIN WALL SYSTEM IN PRE-FINISHED ANODIZED ALUMINUM FRAMES. 1600 SSG BY KAWNEER OR EQUAL
- LOW E, ARGON FILLED, DOUBLE GLAZED, TINTED 'PPG SOLAR BLUE' THERMALLY BROKEN STOREFRONT 'PUNCH WINDOWS' IN PRE-FINISHED ANODIZED ALUMINUM FRAMES. BY KAWNEER OR EQUAL
- SPANDREL GLASS UNIT, LOW E, ARGON FILLED, DOUBLE GLAZED, c/w BLUE OPACICOAT COLOUR TO COMPLEMENT VISION GLASS (COLOUR TBD)
- HORIZONTAL PREFIN. METAL SIDING (PROFILE #1) INFILL PANEL 19mm WAVE PROFILE OR EQ. - COLOUR #1 (WHITE)
- CANOPY CLAD IN COMPOSITE METAL PANEL (BLUE IN COLOUR) TO MATCH EXIST. SYSCO BLUE ON EXIST. WAREHOUSE (SEE #9)
- DEEP RIB HORIZONTAL PREFIN. METAL SIDING - PROFILE #2 BLUE IN COLOUR TO MATCH EXIST. SYSCO BLUE
- HORIZONTAL PREFIN. METAL SIDING, (PROFILE #3) c/w REVEALS AS INDICATED. COLOUR #1 (WHITE)
- SIDING REVEAL (TYP.)
- HORIZ PREFIN. METAL SIDING (PROFILE #3) ON STEEL FRAME AS SCREEN FOR ROOFTOP EQUIP. ON OFFICE AREA
- EXIST. 'SYSCO BLUE' PREFIN. METAL SIDING.
- EXIST. 'WHITE' PREFIN. METAL SIDING ON EXIST WAREHOUSE TO REMAIN.
- PREFIN. METAL DOWNSPOUT (EXISTING)
- INSULATED HM WINDOW c/w THERMALLY-BROKEN FRAME. LOW E, ARGON FILLED DOUBLE GLAZED UNITS. PAINTED WHITE.
- PREFIN. INSULATED SECTIONAL DOOR (WHITE) c/w GLAZED UNITS
- GALV. METAL ACCESS STAIR TO OBC COMPLIANCE c/w PAINTED METAL HANDRAIL, GUARDRAIL & PICKETS IN SAFETY YELLOW.
- PREFIN. METAL CAP FLASHING IN 'WHITE' TO MATCH ADJACENT WALL BELOW.
- INSULATED PRECAST CONCRETE WALL PANEL (STANDARD GREY)
- TYP. LOADING DOCK POSITION c/w INSULATED SECTIONAL OH DOOR, LEVELLER, BUMPERS, VEHICLE RESTRAINT & DOCK SHELTER.
- INSUL. THERMALLY BROKEN HM DOOR & FRAME PAINTED WHITE TO MATCH PREFIN INSULATED WALL PANEL c/w THRESHOLD & WEATHER SEALS
- COMPACTOR LOCATION
- EXPOSED FOUNDATION WALL
- BUSH-HAMMERED CAST-IN-PLACE CONCRETE UPSTAND BELOW OFFICE GLAZING.
- STEEL PIPE BOLLARD (TYP.) 150mm INTERIOR, 200mm DIA EXTERIOR.



5 ENLARGED OFFICE ELEVATION
A2.1 1:100



Glenn Piotrowski Architect



CLIENT
BBS
BUILDING A REPUTATION ON EXCELLENCE
BBS CONSTRUCTION (ONTARIO) LTD.
1805 WOODWARD DRIVE,
OTTAWA, ON K2C 0P9 CANADA
TEL:613-525-8830 FAX:613-525-1709

PROJECT
SYSCO TANNIS
FACILITY EXPANSION & SITE PLAN
MODIFICATIONS

2390 STEVENAGE DRIVE, OTTAWA,
ON K1G 3W3

SHEET TITLE
OVERALL ELEVATIONS

DRAWN BY **BC/GT**
DATE
SCALE **AS NOTED**
PROJECT NO.
SHEET NO.

A2.1