

DOUGLAS JAMES, MCIP, RPP
 MANAGER, DEVELOPMENT REVIEW - CENTRAL
 PLANNING, INFRASTRUCTURE & ECONOMIC
 DEVELOPMENT DEPARTMENT, CITY OF OTTAWA

APPROVED
 By Jamesdo at 2:35 pm, Jun 14, 2019

IT IS THE RESPONSIBILITY OF THE APPROPRIATE CONTRACTOR TO CHECK AND VERIFY ALL DIMENSIONS ON SITE AND TO REPORT ALL ERRORS AND/OR OMISSIONS TO THE ARCHITECT.
 ALL CONTRACTORS MUST COMPLY WITH ALL PERTINENT CODES AND BY-LAWS.
 THIS DRAWING MAY NOT BE USED FOR CONSTRUCTION UNTIL SIGNED BY THE ARCHITECT.
 DO NOT SCALE DRAWINGS.
 COPYRIGHT RESERVED.

NOTATION SYMBOLS:

- (01) INDICATES DRAWING NOTES, LISTED ON EACH SHEET.
- (02) INDICATES ASSEMBLY TYPE; REFER TO TYPICAL ASSEMBLIES SCHEDULE.
- (03) INDICATES WINDOW TYPE; REFER TO WINDOW ELEVATIONS AND DETAILS ON A900 SERIES.
- (000) INDICATES DOOR TYPE; REFER TO DOOR SCHEDULE AND DETAILS ON A900 SERIES.
- DETAIL NUMBER
- (04) TITLE SCALE
- DETAIL REFERENCE PAGE
- DETAIL CROSS REFERENCE PAGE

GENERAL NOTES:

- (A) REFER TO TYPICAL ASSEMBLIES SHEET FOR WALL, PARTITION, ROOF CEILING & FLOOR TYPES.
- (B) FOR DOOR TYPES AND HARDWARE REQUIREMENTS REFER TO DOOR SCHEDULE ON A900 SERIES.
- (C) ALL INTERIOR DIMENSIONS ARE TAKEN FROM THE FACE OF DRYWALL.
- (D) ALL EXTERIOR DIMENSIONS ARE TAKEN FROM THE FACE OF CLADDING.
- (E) ALL EXTERIOR WALLS ARE TO BE TYPE 'W1' UNLESS NOTED OTHERWISE.
- (F) ALL INTERIOR PARTITIONS ARE TO BE TYPE 'P1' UNLESS NOTED OTHERWISE.

No.	DESCRIPTION	DATE
1	ISSUED FOR SITE PLAN CONTROL-3rd submission	Feb. 11, 19
2	ISSUED FOR SITE PLAN CONTROL-2nd submission	Nov. 21, 18
3	ISSUED FOR SITE PLAN CONTROL	Aug 17, 18

REVISIONS:

ARCHITECT SEAL:

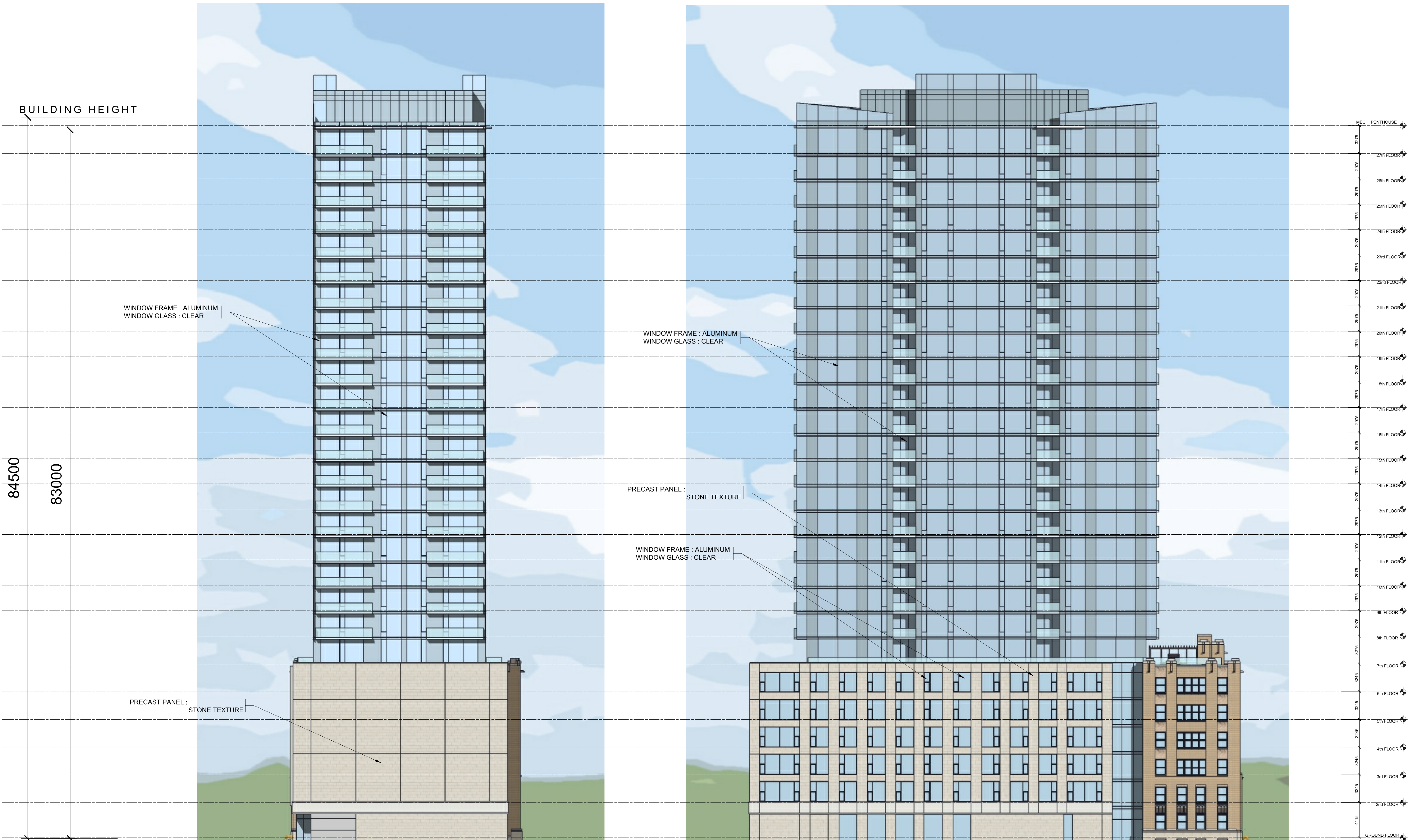
CLIENT: **JADCO GROUP**
 345 Boulevard Samson, Laval, QC H7X 2Z7

ARCHITECT:
RODERICK LAHEY ARCHITECT INC
 1501 CARLING AVENUE, SUITE 200 OTTAWA, ONTARIO K1Z 7M1
 T. 613.724.9932 F. 613.724.1209 www.rodericklahey.ca

PROJECT TITLE:
180 METCALFE STREET
 OTTAWA ONTARIO

SHEET TITLE:
BUILDING ELEVATIONS

DRAWN: JS	CHECKED: R.L.A.
SCALE: 1:200	SHEET No. A-04
PROJECT No. 1808	



WEST ELEVATION

SOUTH ELEVATION