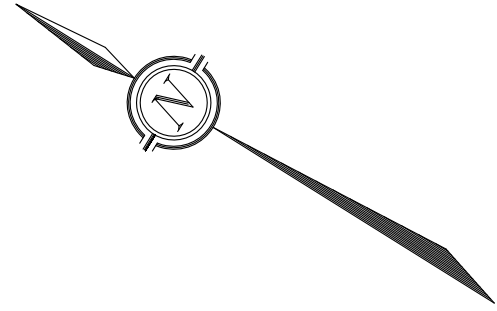


APPROX. EL. 71.95
T.O. PAVEMENT
T.O. ACCESS HATCH

APPROX. EL. 71.95
T.O. PAVEMENT
T.O. ACCESS HATCH



THE LOCATION OF UTILITIES IS APPROXIMATE ONLY, AND THE EXACT LOCATION SHOULD BE DETERMINED BY CONSULTING THE MUNICIPAL AUTHORITIES AND UTILITY COMPANIES CONCERNED. THE CONTRACTOR SHALL PROVE THE LOCATION OF UTILITIES AND SHALL BE RESPONSIBLE FOR ADEQUATE PROTECTION FROM DAMAGE DURING CONSTRUCTION.

GENERAL NOTES:

1. DIMENSIONS ARE SHOWN IN METRIC.
2. CONTRACTOR IS RESPONSIBLE FOR LOCATING AND PROTECTING EXISTING UTILITIES.
3. EXISTING MANHOLE DRAWINGS WERE PREPARED BY CIMA+.



D07-12-16-0193

5	14/02/19	GENERAL REVISION	BU
4	18/07/18	AS PER CITY REVIEW	BU
3	19/01/18	AS PER CITY REVIEW	BU
2	20/07/17	AS PER DESIGNER REVISION	BU
1	08/06/17	AS PER CITY REVIEW	BU
No.	Date	Revision	By:



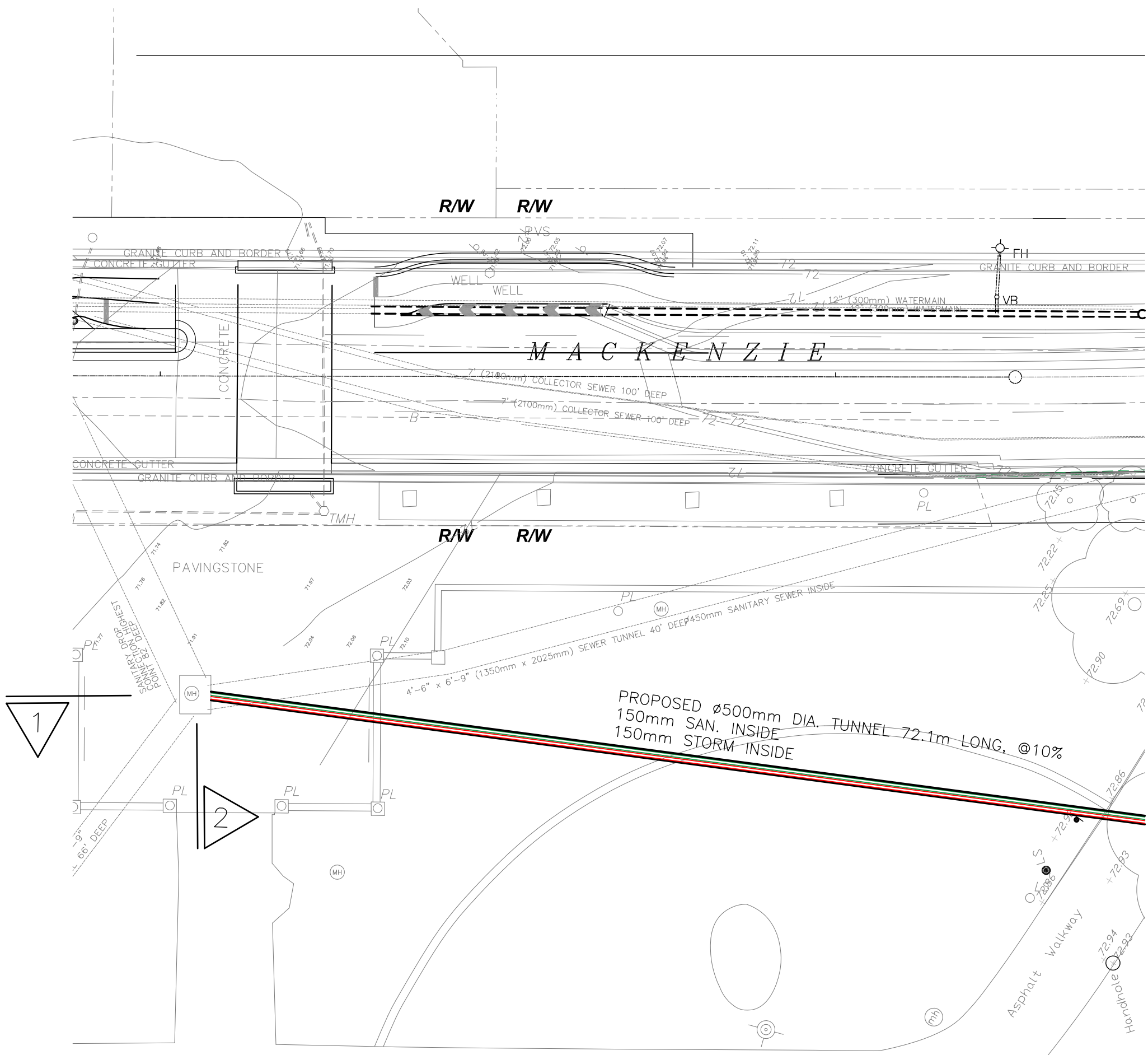
57 Auriga Dr. Suite 102
Ottawa, ON, K2E 8B2
tel.: (613) 225-1162
fax: (613) 225-4529

Client
LARCO INVESTMENTS LTD.

Project
**CHATEAU LAURIER EXPANSION
1 RIDEAU STREET
OTTAWA, ON**

Drawing
**SERVICING CONNECTION TO
EXISTING MANHOLE**

Designed	BU	Date	08/06/17
Drawn	SL	Scale	AS SHOWN
Checked	BU	Sheet	3 OF 6
Project No.	2016-146	Dwg. No.	S-02.1



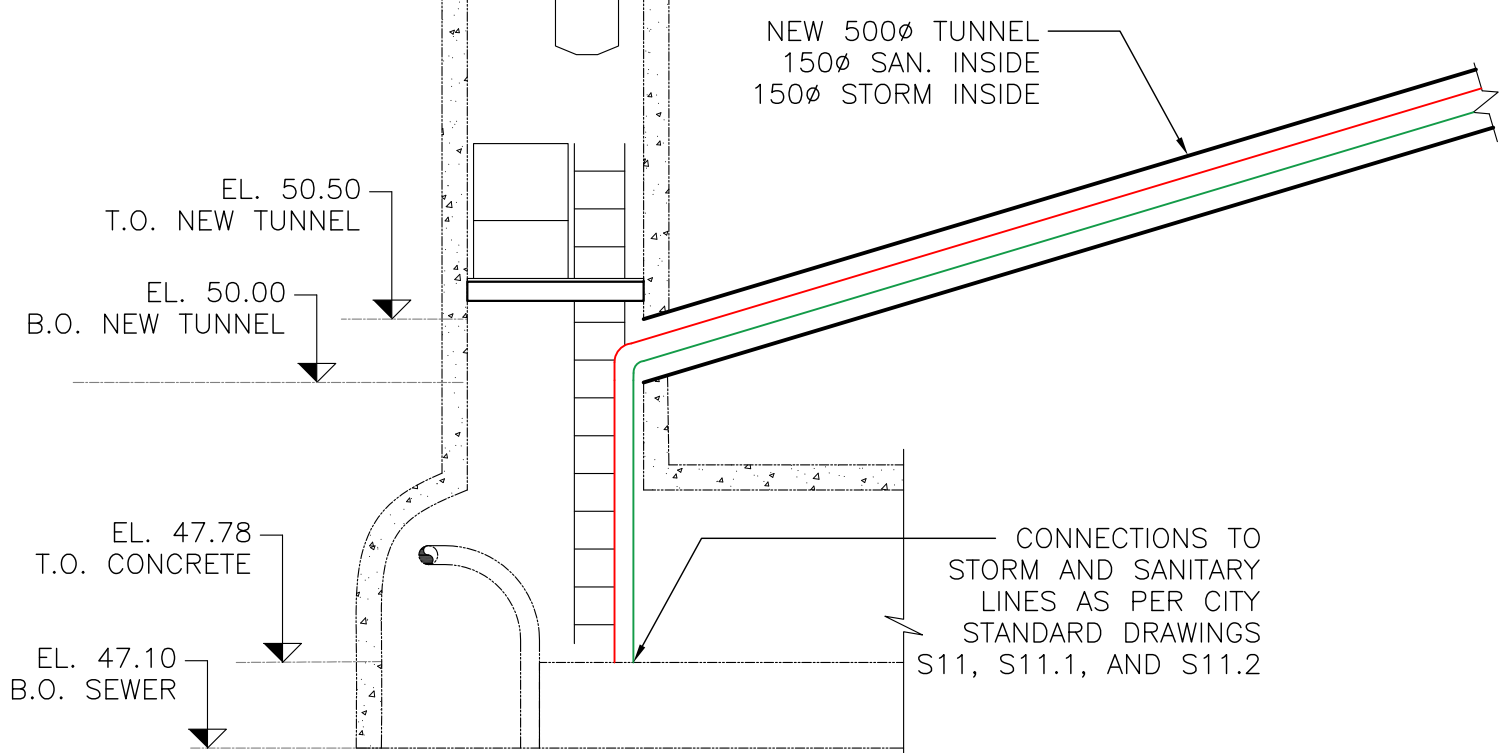
PLAN

1:250

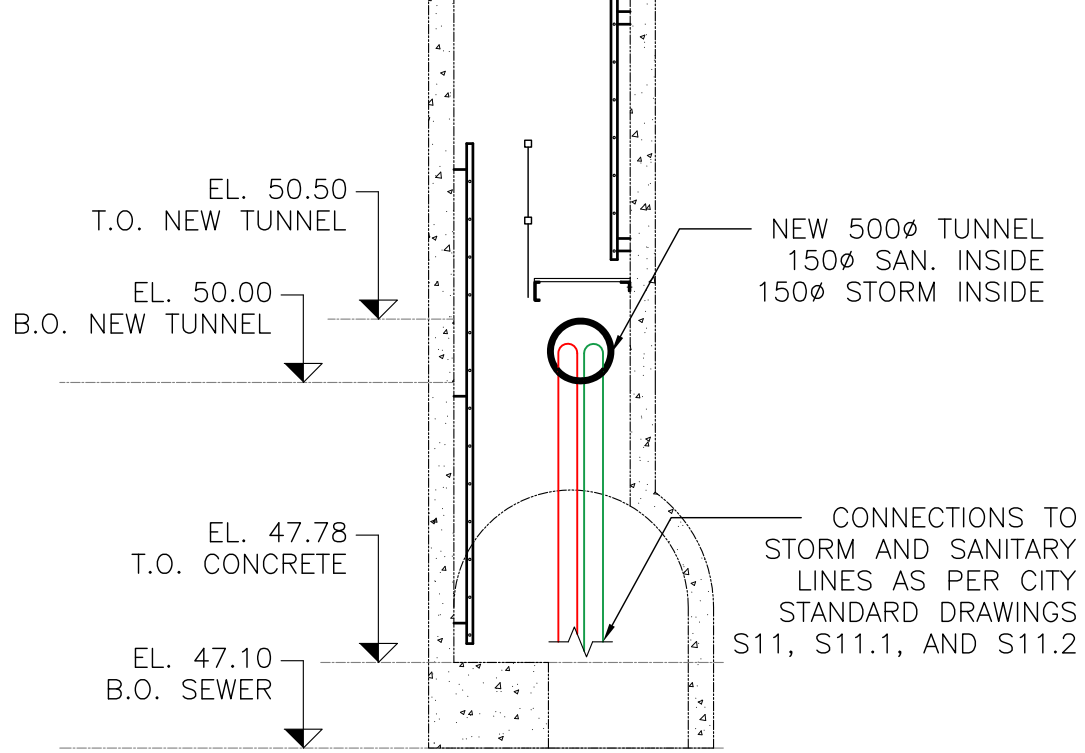
APPROVED

By Caitlin Salter MacDonald at 12:45 pm, Jun 20, 2019

**CAITLIN SALTER MACDONALD
PROGRAM MANAGER, COMMITTEE AND COUNCIL
SERVICES
DEPUTY CITY CLERK, CITY OF OTTAWA**



1
1:60



2
1:60

