

MONTFORT HOSPITAL
ORLEANS HEALTH HUB

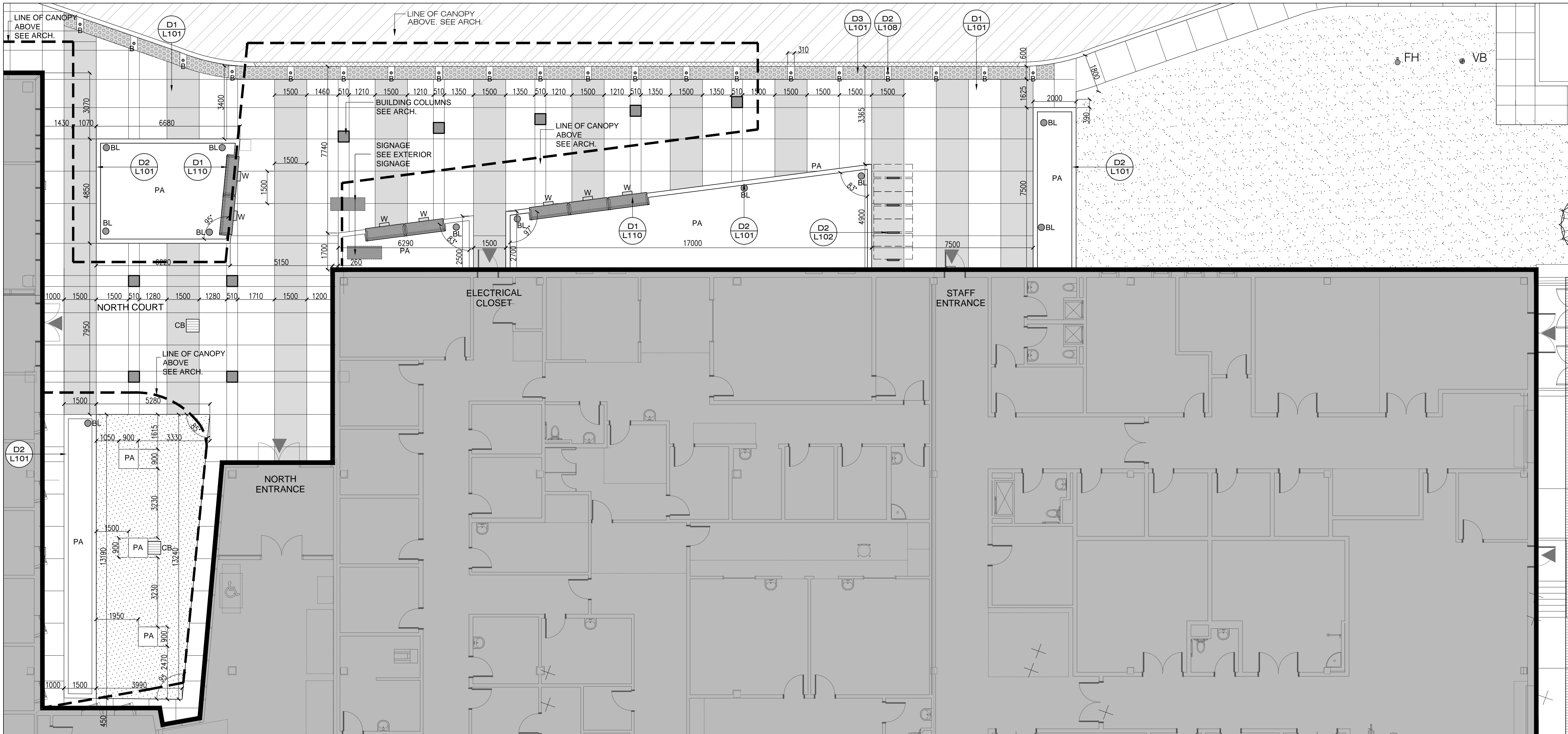
LEGEND	
	CONCRETE PAVING
	TINTED CONCRETE PAVING
	DETECTABLE WARNING STRIP WITH BOLLARDS
	PLANTER CURB - 100HT X 200W TYP.
	LAWN - SOD
	SEEDED MEADOW NATIVE MIX
	VALVE BOX SEE CIVIL.
	FIRE HYDRANT SEE CIVIL.
	BIKE RINGS
	BOLLARD AT DROP OFF
	BOLLARD LIGHT SEE ELEC.
	WALL LIGHT SEE ELEC.
	ELECTRICAL OUTLET SEE ELEC.
	CATCH BASIN SEE CIVIL.

APPROVED

By Jeff McEwen at 10:12 am, Jun 11, 2019

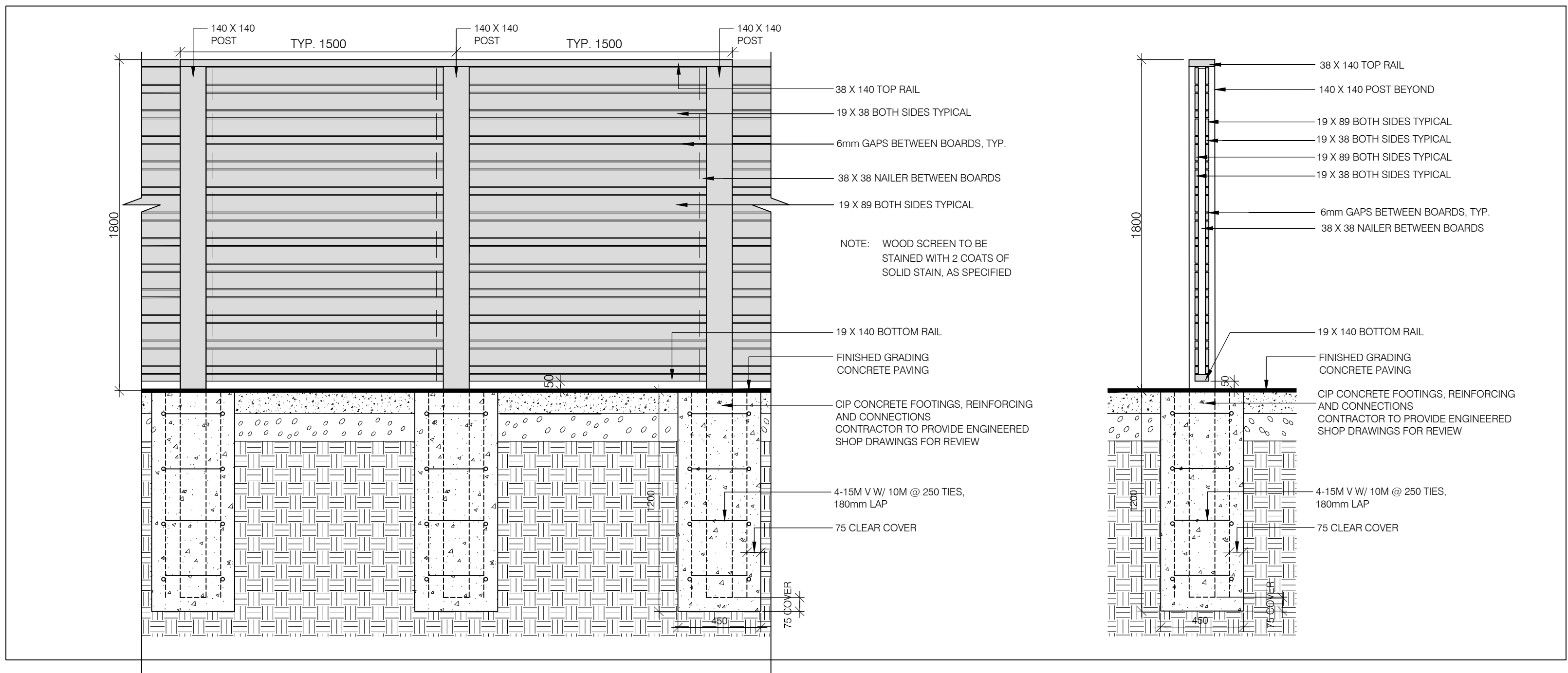
Jeff McEwen

JEFF MCEWEN P.ENG.
MANAGER, DEVELOPMENT REVIEW EAST BRANCH
PLANNING, INFRASTRUCTURE & ECONOMIC
DEVELOPMENT DEPARTMENT, CITY OF OTTAWA



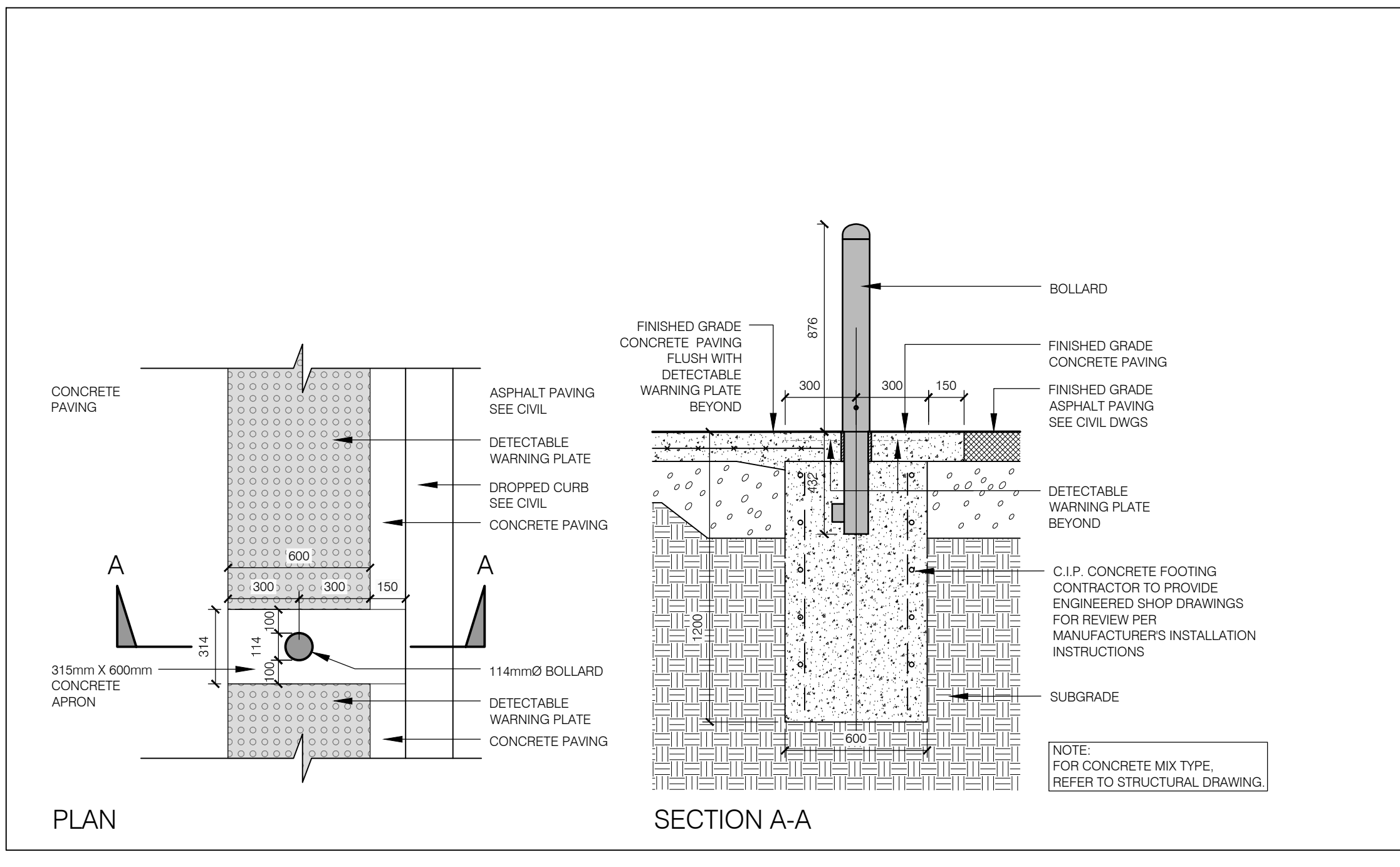
L1
L108 NORTH ENTRY COURT & STAFF ENTRANCE LAYOUT
PLAN

SCALE 1:100



D1
L108 TYPICAL WOOD SCREEN ON GRADE
SECTIONS

SCALE 1:20



D2
L108 TYPICAL BOLLARD AT DROP OFF
PLAN / SECTION

SCALE 1:20

MARK	DATE	DESCRIPTION
1.	17-06-16	ISSUED FOR REVIEW
2.	17-09-21	ISSUED FOR REVIEW
3.	17-11-10	MOHLC STAGE 3.2 SKETCH PLAN
4.	18-02-16	ISSUED FOR 50% PEER REVIEW
5.	18-02-23	ISSUED FOR PEER REVIEW
6.	18-04-24	ISSUED FOR PRE-BID ESTIMATE
7.	18-05-04	ISSUED FOR COORDINATION
8.	18-07-20	ISSUED FOR STAGE 4a SUBMISSION
9.	18-09-25	ISSUED FOR 100% REVIEW
10.	18-10-09	ISSUED FOR RFP
11.	18-10-26	ISSUED FOR BUILDING PERMIT
12.	18-11-02	REVISED SPA
13.	19-03-27	ISSUED FOR REVISED SPA

Project Number
Original Issue
Scale:

1707



Sheet Name
NORTH ENTRY COURT & STAFF
ENTRANCE LAYOUT PLAN &
DETAILS

Sheet Number

L108

Project Status

TENDER