

MONTFORT HOSPITAL
ORLEANS HEALTH HUB

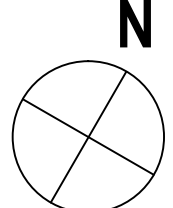
LEGEND

| | | | |
|--|--|--|--------------------------------------|
| | PROPERTY LINE | | EMERGENCY CALL SYSTEM SEE ELEC |
| | CONCRETE PAVING W/ BROOM FINISH | | LIGHT STANDARD SEE ELEC |
| | TINTED CONCRETE PAVING W/ BROOM FINISH | | BOLLARD LIGHT SEE ELEC |
| | FLAG POLE | | DOWN LIGHT SEE ELEC |
| | ORNAMENTAL METAL FENCE 1200HT | | UPLIGHT SEE ELEC |
| | BOLLARD | | ELECTRICAL OUTLET SEE ELEC |
| | PEAGRAVEL | | LIGHT COLUMN SEE ELEC |
| | BERM | | WATER MAIN SEE CIVIL |
| | BIKE RACKS | | STORM SEWER SEE CIVIL |
| | WOOD SCREEN | | SANITARY SEWER SEE CIVIL |
| | MANHOLE | | HYDRO UNDERGROUND LINES |
| | CATCH BASIN SEE CIVIL | | OVERHANGING POWER LINES |
| | VALVE BOX | | OVERHANGING POWER LINES OFFSET ZONES |
| | FIRE HYDRANT SEE CIVIL | | BELL CONDUIT |
| | HYDRO POLE | | |
| | SIAMESE CONNECTION SEE CIVIL | | |
| | EXISTING UTILITY POLE | | |

NOTE: REFER TO UPDATED SURVEY FOR DETAILED BLOCK AND EASEMENT INFORMATION.

| MARK | DATE | DESCRIPTION |
|------|----------|--------------------------------|
| 1. | 17-06-16 | ISSUED FOR REVIEW |
| 2. | 17-09-21 | ISSUED FOR REVIEW |
| 3. | 17-11-10 | MOHLC STAGE 3.2 SKETCH PLAN |
| 4. | 18-02-16 | ISSUED FOR 50% PEER REVIEW |
| 5. | 18-02-23 | ISSUED FOR PEER REVIEW |
| 6. | 18-04-24 | ISSUED FOR PRE-BID ESTIMATE |
| 7. | 18-05-04 | ISSUED FOR COORDINATION |
| 8. | 18-07-20 | ISSUED FOR STAGE 4a SUBMISSION |
| 9. | 18-09-25 | ISSUED FOR 100% REVIEW |
| 10. | 18-10-09 | ISSUED FOR RFP |
| 11. | 18-10-26 | ISSUED FOR BUILDING PERMIT |
| 12. | 18-11-02 | REVISED SPA |
| 13. | 19-03-27 | ISSUED FOR REVISED SPA |

Project Number 1707
Original Issue
Scale: 1:500



Sheet Name

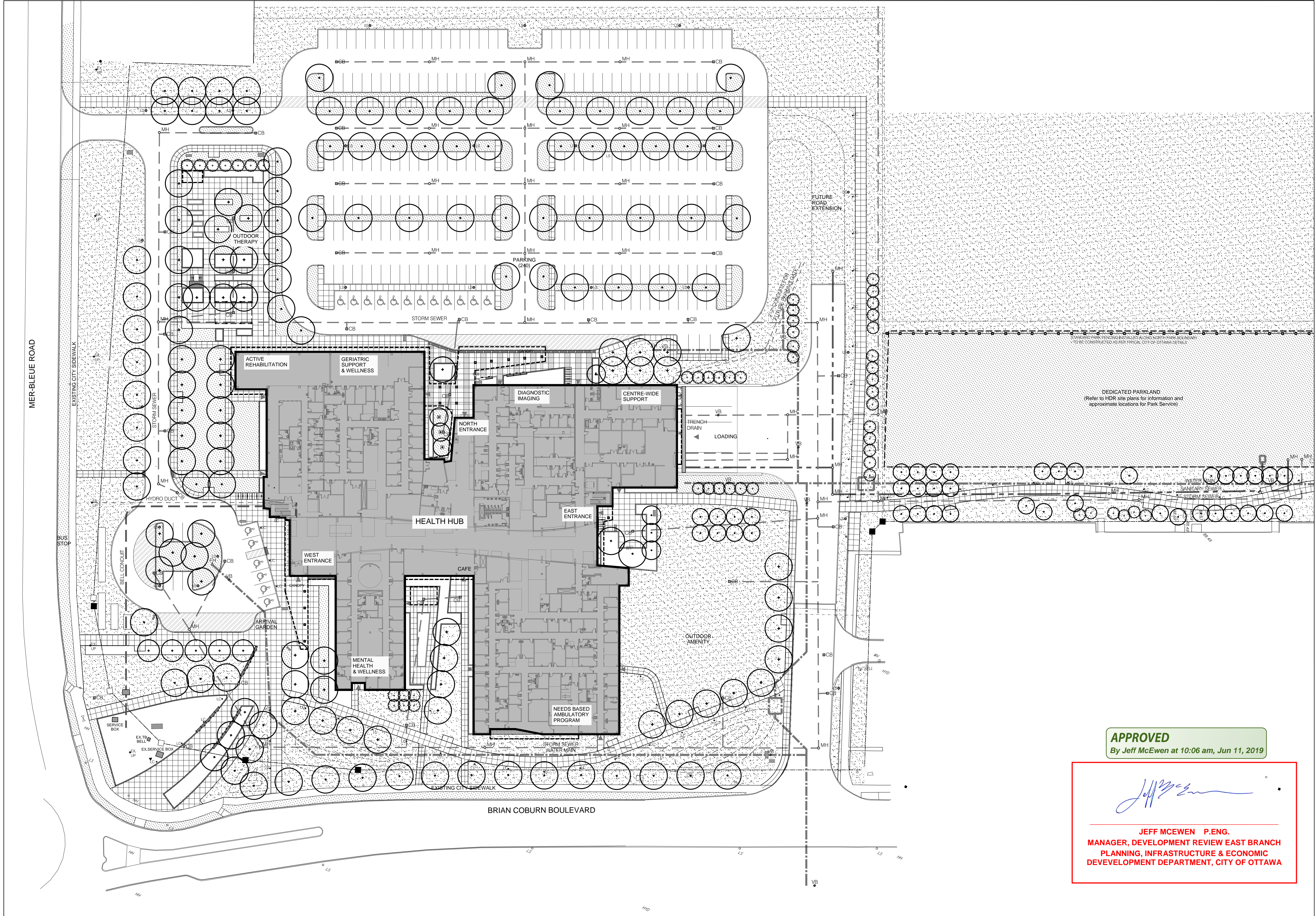
LANDSCAPE UTILITY PLAN

Sheet Number

L100B

Project Status

TENDER



APPROVED

By Jeff McEwen at 10:06 am, Jun 11, 2019

Jeff McEwen

JEFF MCEWEN P.ENG.
MANAGER, DEVELOPMENT REVIEW EAST BRANCH
PLANNING, INFRASTRUCTURE & ECONOMIC
DEVELOPMENT DEPARTMENT, CITY OF OTTAWA

L1 LANDSCAPE UTILITY PLAN
L100B PLAN

SCALE 1:500